

CHURCHILL & DISTRICT NEWS

Est. 1966

Distributed Free

Bushfire Disaster



Glendonald Road Fire Saturday 7th February 2009

"...it was like the roar of a train approaching. There were whoomp type noises which people imagined were gas tanks exploding. The fire moved so quickly- so unpredictable- a few minutes and the fire was on people. A wind change was like flicking a switch..."
Thompson's Road Resident



Glendonald Estate in Churchill

Picture by Matt Prokopiv



Picture by Alice Campbell

Proudly Supported By



Taxation, Financial, Business
Advisors & Superannuation

DAINBRIDGE NICHOLSON FINANCIAL SERVICES

Suite 14 (Upstairs)
Hazelwood Village Shopping Centre
Churchill 3842
Phone: (03) 51 222 033 Fax: (03) 51 222 733
dainbridgegippsland@bigpond.com.au



Glendonald Road fire takes hold and spreads rapidly Picture by Alice Campbell



Late Saturday afternoon in Churchill takes on an eerie feel



Monday 7th February: Thomson Road under attack for a second time



Picture by Alice Campbell



Glendonald Road Fire spread rapidly - picture taken behind the home of Churchill News team member living in Yarram

Lives lost in Victoria's Worst Ever Bushfires

"Watched the fire approach- it was like the roar of a train approaching.

There were whoomp type noises which people imagined were gas tanks exploding.

The fire moved so quickly- so unpredictable- a few minutes and the fire was on people. A wind change was like flicking a switch, and the fire stopped its approach. Then it seemed to slow down"

173 people have now been confirmed dead, a figure which is still expected to rise, in what has been described as the blackest day in Victorian State history. As fires ravaged the State homes people fled for their lives, communities were obliterated and hundreds of homes lost.

The CFA's worst fears came true as temperatures soared on Saturday 7th February, peaking at 46.1. A fire in Bunyip broke containment lines threatening communities in Baw Baw. By lunch time plumes of smoke could be seen over Churchill as a fire began one kilometre south-east of the town in a pine plantation.

The fire, out of control, spread rapidly, threatening communities in Hazelwood South and the Jeeralangs. Traralgon South, Callignee, Woodside, Yarram, Carrjung, Gormandale and many more communities came under threat.

By late afternoon day had turned to night as ash and smoke turned the skies black.

Sirens, water bombers, planes could all be heard as people tuned in the radio. Reports were flooding in from all over the State fires out of control, fire fighters stretched beyond the limit,

more and more communities coming under threat.

A cool change swept through the Valley in the evening bringing 'black rain' but fires raged on.

By Sunday the extent and horror of the day began to emerge. 55 trucks and over 250 volunteer fire fighters had worked every minute from 12pm Saturday to 3am Sunday to control the Churchill fire.

Four people are confirmed dead in Hazelwood, one in Jeeralang, eleven in Callignee and one in Callignee Upper. Road blocks remain in place as emergency services now face the grim task of identifying bodies, a situation that is being repeated in many communities around the State.

Many fire ravaged areas, including the scene of Churchill fire, have been declared crime scenes as distressingly many of the fires have been deliberately lit.

As Churchill began to come to terms with the tragedy on Monday plumes of smoke were again seen - the residents of Thomson Road came under siege again.

The horrific fires of the weekend came as people in the district were still reeling from the fires that destroyed homes in Boolarra on Friday 30th January. Plumes of smoke could be seen on Thursday. Soaring temperatures on Friday saw a fire at Creamery Road, the Delburn Fire join with one near Lyrebird Walk, the Dalimula. Many Boolarra residents evacuated as others stayed to fight for their homes. By 4pm the water ran out in Boolarra.



Road block at Glendonald Road - the area is now a crime scene

As residents of the district sat in a packed Churchill Town Hall the next day, tension was high as a fire siren sounded as the meeting got under way. Residents were seeking information - many did not know if they had homes to return to. To add to the devastation reports began to filter through that the fires were deliberately lit.

Overnight a staging post at Monash

University is set up in a matter of hours a virtual town takes shape with emergency services, and evacuation centre.

By Monday the mopping up began, roads started to open, Boolarra began counting the cost and the hunt for the arsonist intensified.

How Can You Help?

The best way to give in the early days of the Victorian bushfire emergency is to donate money.

That way emergency services and welfare organisations can quickly direct help to where it's needed most.

Red Cross

Contact details for this appeal:

Telephone: 1800 811 700

Email: vicinformation@redcross.org.au

Website: www.redcross.org.au

Salvation Army

Postal Address: Po Box 3020, BOX HILL, VIC 3128

www.salvationarmy.org.au/donations

St Vincents de Paul

To donate by phone call: 131812. To donate goods call: 1800 621 349. Website: <https://www.vinnies.org.au> and follow the links.

Wildlife Victoria Inc

Contact: Steve Clarke. Phone: 0431 478 081 or Email: steve@wildlifevictoria.org.au

Website: www.wildlifevictoria.org.au

Gippsland Emergency Relief Fund Appeal

Website: www.relieffund.org.au

Donations: 100% of donations received by the Gippsland Emergency Relief Fund are distributed to disaster victims*

All donations are tax deductible.

Donations can also be made at any of the banks listed:

National Australia Bank

BSB: 083 932. Account: 04829 9080.

Westpac

Name: Victorian Bushfire Relief Appeal

BSB: 033688. Account No: 379004.

ANZ

Name: Victorian Bushfires relief account

BSB: 013006. Acct: 2521-01991

Australia Post

Donations to the Victorian Bushfire Appeal

can be made at any Australia Post office.

Bunnings

Donate at any Bunnings store.

Myer

Donate at any Victorian Myer store.

Donate Blood

To donate blood call the Red Cross on 131 495 or find your nearest blood donations centre at www.donateblood.com.au

Emergency Services Staging Post at Monash



Monash University Gippsland has been commended for its rapid response in providing the resources of the campus to establish the staging area for the many agencies involved in combating the Delburn fire and the weekend's devastating fires that started in Glendonald Road, Churchill and at the time of going to print still posing a threat to homes in Thomson Road.

These agencies, including CFA, DSE, DHS, Latrobe City and St John Ambulance, have been working around the clock, since the fire started in the Strzelecki Ranges on 29 January 2009.

Premier John Brumby arrived at the Monash Gippsland campus after visiting the Boolarra township where 29 homes have been lost. He acknowledged the extraordinary team effort and the many inspirational stories of people pulling together from surrounding communities.

Professor Helen Bartlett, Pro Vice-Chancellor for the campus praised Monash University staff and service personnel at Gippsland who she said had done an amazing job in support of this community effort.

Local firefighting crews and teams from across Victoria have been arriving on the campus around the clock, for meals and rest breaks before heading back to the fire front. Their work will continue throughout this week to bring the fires under control and begin and recovery activities.

The campus catering staff have served hundreds of hot meals and breakfasts and also prepared lunch-packs that were taken out to fire crews.

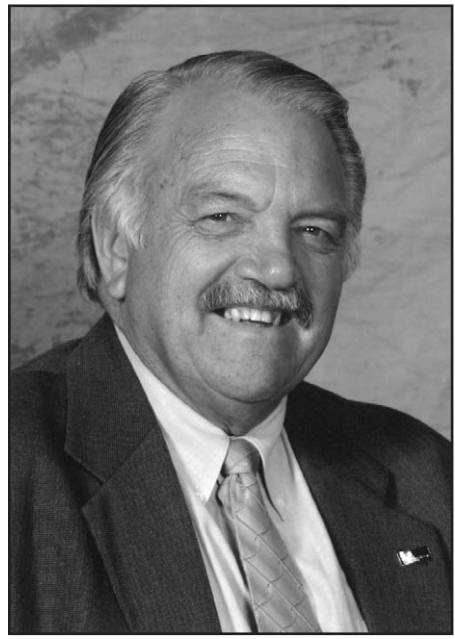
Professor Bartlett said it was fortunate that the bulk of Gippsland campus students had not commenced classes for the year.

"Student accommodation housing has been very helpful for many local evacuees - some of whom have arrived very distressed, having lost their homes or not knowing if their home will survive," Professor Bartlett said.

The campus will continue to provide support for the fire crews as they continue to work to bring the fires under control and recovery period begins and the needs of local families are assessed.

Australia Day, Bushfires & the Hub

Cr Darrell White



The recent devastating fires that occurred in the district have hugely impacted on the communities in our municipality.

It has been tremendous to witness the enormous response by the many agencies, their staff and volunteers, including a huge number of Latrobe City staff, together with community groups and individuals who have provided assistance and support for all those affected by the bushfires.

To all firefighters including the CFA fire crews, both locally and those CFA crews who travelled long distances from all parts of Victoria to assist, along with fire crews from other organizations together with the aerial fire fighting support from helicopters and other aircraft, your presence, efforts, strength, experience, determination and tenacity has been so much valued and appreciated in successfully coping with the fires.

The support of Monash University Gippsland Campus in enabling the set-up of a Staging Area site, I'm sure, has been of great assistance in managing this disaster. Also the Churchill Football Netball Club need to be recognized for their initial assistance as well in making their Social Club facilities available for the firefighters. In addition, the regular updates broadcast by ABC Gippsland Radio 100.7FM have been of immense value throughout the period of the fires.

As a response to the fires the Boolarra Recovery Centre has been set-up at the Multipurpose Building in Boolarra. Already many local families have visited the Centre to receive appropriate support and advice. In addition, Department of Human Services, Telstra and Lifeline have been based there as well. The RACV also established an Information Caravan on site to provide insurance advice.

Assessment Teams consisting of two Latrobe City staff and a Lifeline representative have already visited approximately 120 affected families in both the Boolarra and Yinnar districts.

Emergency relief grants from the Department of Human Services and the Gippsland Emergency Relief Fund have also commenced to be made.

The attendance of the Premier John Brumby

and many of our local politicians including Peter Ryan and Russell Northe to gain a first-hand understanding of the prevailing circumstances was very important for our community to see.

The visit on Wednesday 4th February to Yinnar and Boolarra by the Governor of Victoria, Professor David De Kretser and Mrs Jan De Kretser, to understand the devastation, and to support the community, was very much welcomed and provided a real boost to our affected communities.

Australia Day Celebrations - Churchill

Congratulations to the Lions Club of Churchill & District for again taking responsibility for this year's Australia Day celebrations in Churchill and doing such a great job. The participation of Guides and Scouts in the flag raising ceremony was also great to see.

Special congratulations to Val Prokopiv who was announced as the recipient of "Churchill Citizen of the Year 2009" Award. Val has been an intensely active community member since her arrival in 2001. In her role as both Editor and Treasurer of Churchill and District News, Val has contributed countless voluntary hours on a continuing basis to ensure each edition of the newspaper informs the community of current issues as well as allowing the many organizations within our midst to be able to broadly communicate their activities and events, a key factor in supporting and strengthening the social fabric of our community. Val's involvement in other activities such as the Art and Literary Competitions, Lake Hyland Junior Fishing Competition, the Churchill Festival and the Churchill News History Book makes her a very worthy winner of this Award. Tremendous effort, Val.

Special congratulations also to Churchill's "Young Citizen of the Year 2009", Dale Murphy. Dale is a young man who has been a strong achiever already in many aspects of life. His achievement in 2008 as Dux of Kurnai College and being a member of the Yinnar 2008 Senior Premiership team are two examples, of which there are many, for other youngsters to emulate. Well done, Dale.

Latrobe City - Australia Day citizens, community groups and events Awards 2009

Elsie Lebroc of Morwell received the Award as Latrobe City's 'Citizen of the Year'. Elsie was recognised for her strong sense of community spirit and the vital role she has played in her community.

Elsie is a founding member of the Morwell East Residents Group, which initiated the play park barbecue along Waterhole Creek. She is also a coordinator of Waterwatch, facilitator of the 'Walking School Bus' connected to Morwell Park Primary School, facilitator of the St Vincent's School community kitchen, as well as the one at Morwell Neighbourhood House. Elsie is also a mentor at Berry Street, working with youth, and

facilitator of the after school program with the Smith Family.

Latrobe City's 'Young Citizen of the Year' was awarded to Ben Huke, a highly motivated 17 year old student from Morwell.

Ben is an active member of the student leadership team at Kurnai College.

He is a proactive member of the Morwell Rotary Club. Last term he was primarily responsible for organising a fund raising event at the Kurnai Campus for the fight against malaria in developing countries. In December Ben won the Long Tan Award for leadership from the Morwell RSL. Ben is a great role model for young people in Latrobe City because of his great people and organisational skills.

The Gippsland Immigration Wall of Recognition Multicultural Festival held in March 2008 was awarded Latrobe City's 'Community Event of the Year'.

The Festival, which will be celebrated again in March this year, encapsulated the culturally diverse multicultural history of Latrobe Valley; and being a free event, was totally inclusive.

The event at Immigration Park in Morwell highlighted the unveiling of two new tablets containing names and details of immigrants to the Gippsland region, providing a growing tangible acknowledgment of people's arrival and the subsequent contribution to the growth of Australia as a nation as a permanent exhibition.

The event was well attended by approximately 2,000 people on the day. There were over 100 people who volunteered and contributed to the success of this event. This Festival is strengthening the multicultural community ties through and is helping to revitalise Latrobe City.

The winner of the 'Community Service of the Year' award was Beryl Murphy.

Beryl has given an ongoing commitment to her local community for 50 years. This has included membership of school council, school mother's clubs and hospital auxiliary, volunteering with meals on wheels, palliative care, adult day program activity centre and friendly visiting programs. She is currently a member of the board of management of Yallabee Aged Care Village and is establishment and roster coordinator of Margery Cole Hostel Residents Cafe.

'Australia Day Recognition Awards' were also presented to a number of citizens and groups.

In the 'Citizen' category, Colin Brick was recognised for his outstanding contribution to the Boolarra community over many years. Ann Lovison was recognised for making a difference to her local Yallourn North community, and the wider community by her involvement in a variety of fields. Also recognized was Jeanette Teague for her drive and vision particularly through her work as Treasurer of MOARTZ, Secretary of MOARTZ THEATRE and the Producer of the last ten theatre performances.

In the 'Event' category, the Gippsland Antique Bottles and Collectables Club Inc together with the Morwell Lapidary Club Inc were recognised for their Gemstones, Jewellery and Collectables Expo. The Rotary Club of Traralgon Central was recognised for its 'Give a Damn, Give a Can',

food can collection for St Vinnies.

Latrobe Community Health Services Inc and Ninde Dana Quaranook Aboriginal Health Service were recognised for the inaugural 'Sorry Day' event and the 29th Tyers Art Festival was recognised for providing a high quality exhibition for Gippsland artists to showcase their work.

In the 'Community Service of the Year' category, Gippsland Rotary Centenary House Inc received recognition for providing safe, supportive and affordable accommodation to patient and/or families of the Latrobe Regional Hospital, and in particular the Gippsland Cancer Care Centre.

Yvonne Jones was recognised as a tireless campaigner for the Cancer Council and Max Williamson, from Traralgon, was recognised for his involvement in fund raising for the Royal Children's Hospital Good Friday appeal within the Royal Exchange Hotel's Cork Club.

Congratulations to all Award recipients.

Churchill and District Community Hub

Completion of work at the Hub by Contractors is very close to finalisation.

"Pooh Corner" Childcare Service is now operating from the Hub and has been set up with new toys, equipment and facilities and is operating between the hours of 6.30am to 6.30pm.

The new Churchill Pre-School at the Hub commenced last Thursday with Early Childhood Educator roles being filled by Rhian McInerney and Leah Henderson. The Maternal and Child Health Centre has also commenced at the Hub with Alison Condon based there three days per week.

Commencement of the new Churchill Service Centre and Library is imminent which will mean a much more accessible service for Churchill and district residents. It is expected that the Churchill Neighbourhood House will take occupancy of their space very shortly.

The Hub's Management Committee, of which I am chair, consists of Mary Willaton, Rob Whelan, Alan Scarlett, Mike Answerth and Wendy Bishoff. David Welch (Manager, Child and Family Services) fulfils the role as the Committee's Executive Officer. The Committee is meeting regularly. A key issue which the Management Committee is currently addressing is the creation of an appropriate operational framework for the Hub's daily functioning.

Proposed "East West" Road Link between Monash Way and McDonald Way

Community consultation will be carried out through the month of February, aimed at either removing or confirming the need for an extension of the "east west" road link as part of the long term planning for the Churchill Town Centre. Issues to be considered include the role of the proposed "east west" road link in the Churchill Town Centre Plan, pedestrian and vehicle traffic, open space, housing, vegetation impacts, land tenure and estimated costs if the road link was to be constructed.



Childcare Services up and running at the new Hub

Maisie Fox Turns 100!



Maisie celebrates her 100th birthday with sons Ron and Noel

Hazelwood House resident, Maisie Fox, turned 100 on 28th January 2009. Maisie was joined by her sons Ron and Noel in celebrating this wonderful achievement. Maisie's family wrote about a life that has seen many changes.

Life of Maisie Fox

Maisie is the daughter of May and Rueben Cochrane. She was born at Traralgon Hospital on 28th January 1909. She is an only child. Her mother died soon after her birth so she was brought up by her grandparents, George and Janet Archbold. Maisie spent her early life on their farm at Tyers and attended the Tyers Primary School. Her cousins, Harry, Hugh, Alex and Trix Archibald, who lived nearby, were here constant companions. Maisie loved to play tennis and became a very competitive player, playing for Traralgon.

Maisie met Frank Fox when travelling on a train to Sale and started up a friendship. They married in Traralgon on 22nd May 1930 and settled on the Fox family farm at River Road in Boolarra. Over the following years they had three children, Ron, Lorna and Noel. Maisie

helped with all the farm chores including milking the cows by hand. She loved her horse, Ginger, who was sometimes a bit flighty but she was always able to handle him.

Maisie involved herself in the Boolarra community, becoming a member of the CWA and Red Cross. During the war years she rode her horse around the district collecting funds for the Red Cross. She also took up tennis again and played for Boolarra for many years.

In the early 1960s Frank and Maisie moved into the township and enjoyed activities together until his passing in 1970.

Maisie's great passion in later years has been lawn bowls. She has played for over 50 years, making many valuable friends along the way. She has won the Boolarra Club Ladies Championships and Gippsland state events. Her 90th birthday present was a new set of narrow bias bowls. Maisie being a great competitor continued playing until she was 96. She also drove her car until she was 96.

Maisie has lived through two world wars, the great depression of

the 1930s and during her 100 years has experienced many changes from: milking cows by hand to machine, travelling by horse and cart to cars, cool gardie safes to refrigerators and freezers, candles, kerosene lamps, wood stoves and flat irons to modern electrical equipment and neck to knee bathing togs to brief bikinis. She has seen the introduction of penicillin, antibiotics, ball point pens, television, plastics and mobile phones.

Over the years one of Maisie's great loves has been her garden which was much admired. She kept it in immaculate condition by spending many hours tending to it.

Most of all her love has been for her three children, nine grandchildren and 20 great grandchildren and their partners, always being concerned for their happiness and welfare.

Maisie has been a role model and inspiration to everyone and is much loved. On her special day all wished her a very happy 100th birthday and congratulations on a wonderful achievement.



Amcal Club

Monday - Friday
8.30am - 6.00pm
Saturday
9.00am - 2.00pm
Telephone:
5122 1390

taylor made for YOU

Xndo™
www.xndo.com.au

Weight Management

taylor made for YOU

H.A.Z.E.L.W.O.O.D
HHC
HEALTH CENTRE

Bulk Billing

- *Family Medicine
- *Women's Health
- *Counselling
- *Minor Surgical Procedures
- *Pathology Service
- *Industrial Medicals
- *Visiting Paediatrician
- *Visiting Physiotherapist
- *Visiting Surgeon
- *Visiting Psychologists

*Travel & Health Immunisations

Consulting Hours
Monday to Friday 8am - 5.30pm
Saturday 8am - 1.30pm
24 hour on call service
Tel: 5122 2555
9a Georgina Place, Churchill, 3842
"Caring Family Medicine"

Gippsland Physiotherapy Group

... Keeping
Gippslanders
Pain Free

LOCATIONS

Central Gippsland
Traralgon Phone 5174 6865
Morwell Phone 5133 7388
Moe Phone 5126 1349

South Gippsland
Leongatha Phone 1300550351
Wonthaggi Phone 5672 5866
Korumburra Phone 1300550354
Inverloch Phone 5662 4543
Cowes Phone 5962 2869

West Gippsland
Warragul Phone 5623 6989

Jeeralang North Hall

There will be no more Old Time Dances at Jeeralang North Hall as regrettably the hall was lost in the fires. Our thanks go out to all the Committee for their dedication over decades in maintaining the hall. Our thoughts are with you.

Church News

Church Service Times

Co-operating Churches
of Churchill

Rev. Dr. Bob Brown
Williams Avenue, Churchill.
Tel: 5122 1480
Glenda and Ian Combridge
Tel: 5166 1819
Sunday Service: 9.30am.
Choruses: 9.20am

Lumen Christi Catholic
Church

35 Walker Parade, Churchill
Tel: 5122 2226
Father Malcolm Hewitt
Saturday: Mass: 7.30pm
Sunday: Mass: 9.30am
1st, 3rd, and 5th Sundays: Yinnar:
Mass: 11.00 am
2nd and 4th Sundays: Boolarra:
Mass: 11.00am

Churchill Christian
Fellowship

Maple Crescent, Churchill.
Sunday: 10.00am
Ladies Meeting: Tuesday 10.00am



Church Snippets

Keith Williams Christmas Services Sign

The members of the Co-Operating Churches in Churchill would like to sincerely acknowledge Keith Williams Real Estate for supplying the large sign advertising our Christmas Services.

We are very thankful. It was most appreciated.



Crib Service

The church was full with families- grandparents, children and grandchildren as well as visitors.

It was a delight to see. The theme was peace and love came down at Christmas, in the form of God's gift of

CHAPLAIN'S CONTEMPLATIONS

By HUGH BROWN

As I pen these few words this morning, all of us both in the local communities and the University are still coming to terms with the recent fires that brought such devastation to many lives.

The emergency crews have taken up temporary residence here at Monash and their presence here is a potent reminder that we may have to face further trauma in the weeks and months ahead. It is a most sobering thought!

The experience of the past weeks has brought physical and emotional trauma to all those directly impacted by the fires and to those of us who have lived on the fringe of the events and can only feel the deep pain and stress that others have experienced.

If there be any good in this recent experience, and as an optimistic and fighting people, we can always find

something to be learned and the recent traumas have highlighted one indisputable fact - it is people who make a difference!

The small communities devastated by the fires are people with homes and families, stories to tell, memories to cherish, regrets to be dealt with, homes and sheds and fences to be mended and, most importantly, hearts that need to be loved and cared for.

We all know that fire makes a good servant; we also know that it makes a terrible master! But the human spirit is greater than fire and it is comes to the fore when communities are temporarily ruled by such a terrible master.

The Delburn fires are testimony to the power of people to put the interest of others before their own:

- * the neighbours who helped each others save their homes;
- * the relief workers from all

love- Jesus, the Saviour of the world.

The children participated in unwrapping parcels to find the props and symbols of the Christmas nativity story, after which they dressed up as the characters and acted out the story.

The singing was happy and joyful, expressing the elements of the season- joy, peace, hope and love. The true meaning of Christmas was remembered and celebrated. The service ended with singing Happy Birthday to Jesus, and sharing a gift and a cake.

There were many people who contributed so much effort to make the service such a meaningful success. A HUGE THANK YOU is extended to them.

Cool Club 4 Kids

This after school club is held on Wednesday afternoons for eight weeks of each term.

All children of the town are welcome to participate. It is held in the Church Shed from 3:30pm -5pm. and cost \$1 per week.

This term started on 4th February, but it not too late to come this term. We start with afternoon tea, followed by a combination of games, craft activities, a story and singing. If you want to know more contact Jenny 51223368, or Ruth 51221961.

The Co-Operating Churches in Churchill would like to acknowledge the Latrobe Trust- Gambling Impact Fund for its financial contribution to the set up of the club.

This finance enabled the club to buy 4 trestle tables, a CD player, 2 ceiling fans, train two people in first aid, and food handlin. They also supplied first aid and sporting equipment. This has been most appreciated.

Annual Meeting

This will be held on Sunday 15th February from 9:30am. It will be included in the usual 9:30am service.

Our annual meeting is a chance to hear reports of each group's activities, and to celebrate a year of successful events and activities.

All are welcome to attend. Morning tea will be served after the proceedings.

departments who selflessly place their own lives in danger to protect our communities;

* the families and friends who anguish from a distance but are always seeking to find news of loved ones;

* the countless people from here and elsewhere who offer support, supplies or just a shoulder to cry on.

The list is endless but the important thing is that it is made up of people - they are our most precious and valuable asset. Each one is testimony to the fact that we can and do make a difference. For that, at least, we can and are immensely grateful.

The weeks ahead won't be easy. We should never be complacent about the realities that face us. At the same time, let's be grateful for each other and remember those who remain in special need. They need our care, our love, our prayer and our friendship.

Carols By Candlelight

By RUTH PLACE

The night was balmy and clear, with a slight breeze. The amphitheatre at Monash was an ideal venue with Peter Schneider acting as Master of Ceremonies.

Many people came and shared a wonderful night of singing and listening to our talented locals- Men In Black (Lumen Christi), Katie Ferguson, Ben Schuback, The Latrobe Concert Band who played for community singing, as well as presenting some items, The Singing Group (Co-Operating Churches) Linda Cheater who gave the message and a small group of people who presented the Christmas Story for the children.

As the night progressed, the candles alight, gave a warm glow to the atmosphere, and the feeling of excitement as Christmas was just around the corner.

A collection was taken to aid the breakfast clubs at the local schools with \$248 being raised.

The organizing committee would like to thank all those who gave so freely of their time to help the night go so well. Special thanks go to John Mazur for the sound. The committee worked hard to produce the evening. They were pleased to see so many people present, and thank the public for their attendance.

Julia Buras shared her Polish Christmas traditions with us. They are reproduced here.

"As the first Sunday of Advent is announced, children eagerly await the arrival of small packages (often decorated gingerbreads or chocolates) from St Nicholas, on 6th December. There is a tension on the night of the 5th of December as there was always the remote possibility that the previous year's behaviour had managed to reach St. Nicholas, who occasionally left a stick instead of sweets.

In Polish culture, Christmas is a very

important occasion. Traditionally, celebrations start as the first star twinkles in the sky on Christmas Eve. This is probably the only thing that makes Christmas in the Southern Hemisphere different, because in the middle of summer, it gets dark very late. For Polish people, who often found themselves refugees after war, being with someone in the family is very important. There is also a very strong tradition of a spare place at the table, left just in case someone has managed to make their way home, or a stranger is in need of sharing some family warmth.

Preparations start in the days leading up to Christmas Eve, and as Christmas Eve dawns, the kitchen begins to fill with delicious smells of specialty dishes being prepared. This is a good time to lend a hand in the kitchen, if you are good at that sort of thing, or make yourself scarce if you are not, as the cook is bound to be under pressure. Ever since I was able to set the table, I have done this, and as I have grown up, I have added special dishes to my cooking repertoire.

The table setting has a little hay placed either under the table cloth, or in a centre piece to remind us that Jesus was born in a stable. There is also always, a blessed wafer (oplatek), or unleavened bread, which is shared with each person present. Everyone breaks a small piece off the wafer of everyone else, and best wishes for the next year are exchanged. Of course, there are variations of the traditional meal, but all will have the following:

- * a beetroot soup (barszcz) with tiny mushroom-filled dumplings in it.
- * Herrings are a big favourite.
- * A baked fish, (in Poland it is a fresh carp, but here in Australia there are so many different varieties, that in our family we have something different every year)

* Dumplings filled with cheese and potatoes, or with sauerkraut and mushrooms (pierogi).

* Following the main courses is the dessert (cheesecakes, poppy seed cakes and a variety of slices) and fruit, which is fresh seasonal, or preserved fruit.

After the Vigil dinner, everyone present moves to the Christmas tree to sing Christmas Carols, (koledy). Today, I am going to share two carols "Wsrod Nocnej Ciszy" (In the Stillness of the Night), which is the carol that starts my family's Vigil dinner. The second carol "Lulajze Jezuniu" (Sleep Baby Jesus) is a lullaby that Mary sings to Jesus rocking Him to sleep. I hope you enjoy the Polish carols I have chosen for today.

The message I would like to share today, is that over many decades, through many difficulties, exiles and desperate loneliness my ancestors and other Poles have spent Christmas holding onto small traditions that have maintained their dignity in terrible times, always hoping for a better tomorrow, and never giving up hope of seeing their country free and at peace. Christmas with its story of hope gave then that strength to renew that hope of peace and freedom every year."



Saturday Breakfast

The first Breakfast for 2009 will be held on Saturday 28 February at the Co-Operating Churches starting at 7.45 am.

Father Hugh Brown will be the guest speaker. Parish Priest at Lumen Christi and Chaplain at Monash Gippsland, he will speak about his personal experiences

in various positions he has held and about his position as Chaplain at Monash.

People interested in attending should contact Keith Enders on 5122 1148 or by e-mail at kbenders@net-tech.com.au by Thursday 26 February.



Community Priorities

By Margaret Guthrie, President
CDCA held its first meeting for 2009 on January 28th. The committee reviewed our 'Priority Items' for the year ahead. These are the items of business which are on our agenda each month for updates, reports and progress discussions.

Priority Item 1 is the Churchill Town Centre Plan. This includes planning for a proposed Civic Space, Gardens and War Memorial. Ian Gibson, who is coordinating Latrobe City's implementation of key elements of the plan, gave an update on the development of detailed scale plans for our CBD.

CDCA has requested that a report be presented to our February meeting on the road works proposed for Phillip Parade and the process and timelines for implementation of these works.

Our second Priority Item for 2009 is 'Community Activities', including the expenditure of funding from Latrobe City on Christmas decorations for the town centre.

Last year we were able to purchase some decorations (and brackets) which will be erected for Christmas 2009 in the new southern (Council owned) car park, currently under construction. CDCA also has funding in reserve that we hope may be used to provide suitable decorative lighting during the festive season, once construction within the CBD is complete.

The Churchill Structure Plan is to be considered by Latrobe City Council at its March meeting as part of Amendment C62 to the Latrobe Planning Scheme. Officers are to prepare a report and recommendations for the consideration of Councillors.

In our submission to Council on this matter, CDCA urged that community consultation on the proposed 'west link extension' of Georgina

Place into Walker Parade and McDonald Way be fast-tracked, so that this could be included in Council deliberations. It is important for planning considerations and the comfort of local residents to have this matter resolved one way or another.

Council has invited CDCA, along with representatives of the 'Save Our (Walker Parade) Park' group, Churchill Primary School and Hazelwood Village shopkeepers, to form a working party to develop a suitable consultation process for residents to express their views.

It is important to note that CDCA has not adopted a position in regard to this matter, but rather, is anxious that the views of all residents be ascertained and given due consideration, prior to any decisions being taken by Council.

The latest news on the Churchill Community Hub was also tabled at our January meeting. Operations are due to commence in February, with a probable 'staggered' opening of the facilities as final details are attended to and occupants take possession.

The Hub Board has recommended a community open day be held on Sunday March 1st so that all residents may inspect all areas of our new centre. It promises to be a vibrant and lively centre, once it is filled with children (kindergarten and childcare), classes and activities (Neighbourhood Centre, Library and community rooms).

Other items of interest discussed at our meeting included the Latrobe Valley Bus Service Review, signage for Churchill's walking tracks and recreational pathways and the latest correspondence from Latrobe City regarding the site of a permanent home for the Churchill Lawn Bowls Association (Gaskin Park).

Since our January meeting was

held, the importance of these local planning matters and other issues has been overshadowed by the devastation caused by the bushfires in our district.

Many locals have been directly involved in fire-fighting efforts, evacuation support and recovery efforts. Churchill itself has been the site of community fire information meetings, an emergency relief centre and a CFA staging area.

CDCA would like to commend the efforts of all the volunteers and express our heartfelt sympathy to those who have suffered from the impact of these fires.

We would urge those residents who are able to, to donate to the Gippsland Emergency Relief Fund (tax deductible donations may be made at the National Bank) and consider supporting the CFA, either by donation or by becoming a volunteer.

'Community spirit' is an important element of life in rural and regional areas. As an example of this, a number of locals witnessed an incident in the Hazelwood Village car park during the holidays and provided information that enabled the perpetrator to be identified and charged by the police. It is to be hoped that similar 'good citizenship' will lead to the identification of any arsonist active within the district.

CDCA meets on the fourth Wednesday of the month at 7pm. All local residents are very welcome to attend our meetings and hear the latest on Churchill projects and issues.

Our next meeting will be held at 7pm on Wednesday 25th February in the new Churchill Community Hub.

Contact CDCA at PO Box 191, Churchill or by phoning the Secretary, Rob Whelan on 0427223602 or via email: robwhelan@eftel.net.au

KIDS BACK AT SCHOOL? NOW IS YOUR TIME PAMPER YOURSELF WITH

- New Hair Style
- New Hair Colour
- Waxing
- Facial
- Manicure
- Pedicure
- Spray Tan

RELAX, LAY BACK, ENJOY REVITALISE YOUR BODY



Shop 4 Hazelwood Village
Churchill Victoria 3842

Telephone: 03 5122 3311

KATS * HAIR * BEAUTY

Looking for a great interest rate on a Home Loan?

Then look no further!

5.98%_{pa}

(variable rate)

6.88%_{pa}*

(comparison rate)

Our 12 month Introductory Home Loan includes mortgage offset, redraw, additional repayment options and no monthly or ongoing fees.

For more information please call one of our loans consultants.

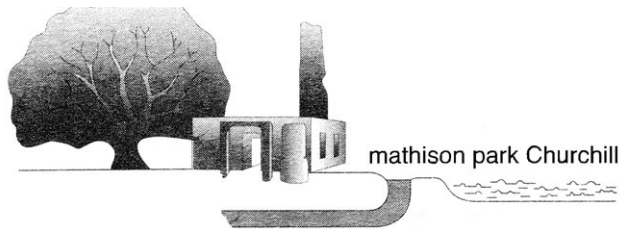
LATROBE
COUNTRY CREDIT
Your Community Credit Union!



• latrobecountry.com.au • Morwell • Traralgon • 5134 4588

Fees and Charges apply. Terms and conditions available on request, subject to our normal lending criteria and approval. *Comparison rate based on a secured loan of \$150,000 over 25 years. Rate reverts to the Premier Home Loan variable rate after the 12 month introductory period. A comparison rate schedule is available at La Trobe Country Credit offices or by calling 5134 4588 or at www.latrobecountry.com.au
WARNING: This comparison rate applies only to the examples given. Different amounts and terms will result in different comparison rates. Interest Rates are correct as at 27 January 2009 and subject to change. Costs such as redraw fees are not included in the comparison rate but may influence the cost of the loan. New loans effective 27 January 2009, existing loans effective 1 March 2009. ABN 91 087 651 527.

Thanks to Terry Key



By RUTH PLACE

It has been very satisfying to see so many people enjoying the park over the holidays.

At least one person spotted a snake. Did anyone else see one? We would like to know. Give us a call on 51221961.

The Mathison Park Committee would like to publicly thank Terry Key for all his wonderful devoted work in the park over many years. Terry has been a tireless worker, one of the driving forces behind the park's development. He has spent many hundreds of hours working in the park, as well as planning and preparing for the working bees and contributing to submissions for funding. Terry has decided to take a well earned rest from full involvement with the park. He will be very much missed. He was such a great person with whom to work.

The committee needs some more members. If you have an interest in how the park should and could develop, please contact Simon at Latrobe City Council on 1300 367 700.

The committee meets very first Tuesday of the month in the Leisure Centre at Churchill.



Koala spotted in the park

SUNGLASSES with all-year-round UV protection.



20% OFF

Bolle, Christian Dior,
Trussardi, Puma

Extensive range of Quality
Professionally fitted Sunglasses

LATROBE
EYE CARE

George Street, Morwell
Phone 5134 2555

WANTED

YOUR PHOTOS AND MEMORIES OF THE BUILDING OF WATSON PARK, WALKLEY PARK, ANDREWS PARK AND GLENDONALD PARK KINDERGARTENS AND THEIR OPERATION.

As these kindergartens have now all closed, a history of their part in Churchill's story is being collated.

Ruth Place would like to hear from you. Please ring 51221961, or email place@net-tech.com.au

Churchill & District News

In the wake of the most devastating bush fires in Victoria the team at the Churchill and District News echoes what all Victorians are saying. Our heartfelt thanks goes to the CFA volunteers.

They are hero's one and all. Also, the Red Cross, Victoria Police, DSE and the many other volunteers and

agencies - we are in your debt. Thank You.

Your Stories:

If you have a story you would like to share and / or some photos we would be very grateful if you could forward them to us. (Address below). If you have any queries please ring me on 0411 053 546.

The Team:	Layout/Design: Val Prokopiv, Tracey Burr	Matt Prokopiv
Team Leader/Secretary : Ruth Place	Webpage: Val Prokopiv	Team Members: Wendy Brown, Charlie Rawlinson, Carol Scott, Alan Larkin
Editor/Treasurer: Val Prokopiv	Proof Readers: Ruth Place, Olivia Jackson	
Advertising: Peter Prokopiv, Ruth Place, Tracey Burr	Photography/Computer Support:	

Contributions

The deadline for the submission of articles and advertisements for the March 2009 edition is February 30 2009

Articles for publication and letters to the Editor can be sent to: Churchill & District News PO Box 234, Churchill, 3842 Or Email: cdnews@dcsi.net.au	All articles must be submitted by the 30th of each month for publication in the second week of the following month. Advertising enquires can be	addressed to: Peter Prokopiv Churchill & District News PO Box 234, Churchill, 3842 Tel: 03 5122 2589 or 0402 406 376
--	--	--

**Articles can be left in our Drop Off Boxes Located at:
Cafe Le Mac's, Churchill Primary School, Churchill Library and the Co-Operating Church**

ADVERTISING RATES

Full Page: \$255.00	11cm x 13cm \$80.00	Inquiries Tel:
Colour: \$450.00	11cm x 6.5cm: \$45.00	Peter on 5122 2589
Half Page: \$195.00	7cm x 6.5cm: \$32.00	
19cm x 15cm: \$115.00	All prices include GST.	

Webpage: www.cdnews.com.au

Disclaimer

The Churchill and District News wishes to advise that the views or remarks expressed in this publication are not necessarily the views of the Editor or the Management Team and no endorsement of service is implied by the listing of advertisers, sponsors or contributors.

THE CHURCHILL & DISTRICT NEWS IS PRODUCED UNDER THE DIRECTION AND CONTROL OF THE CO-OPERATING CHURCHES OF CHURCHILL. THE CO-OPERATION IS MADE UP OF THE ANGLICAN, UNITING AND CHURCHES OF CHRIST.

FIRMANS LANE GARDEN SUPPLIES & NURSERY MORWELL PHONE: 03 5133 9360

Open 7 days a week



**All Garden Edging
Light Water Pots
Garden Ornaments
Letterboxes**

Herbs

**Pillars
Sleepers
Concrete Sleepers
Concrete Paint**

**Pavers of various sizes and colours
Light weight real life Animals**

HUGE

Variety of Plants

HUGE

Range of Water features, fountains.

**Yellow
Pages
Advert
We are on
page 332**

**Present this
advert to
receive a
10%
discount**

RUSSELL NORTHE MLA



Putting Locals First

For assistance with State Government matters
Ph 5133 9088 or visit
66 George Street
Morwell

Member for Morwell

Podicare

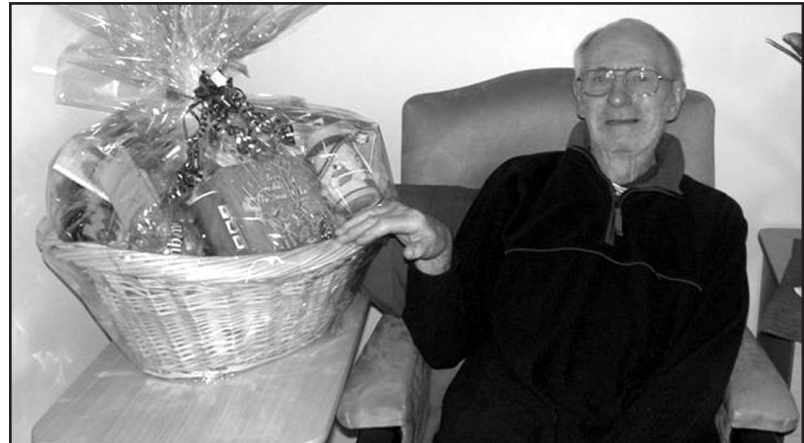
Telephone: 5134 2375

110 George Street, Morwell

New Winter Stock Arriving

- Hush Puppies
- Homy Peds -Kluds
- Pure Comfort -Kumfs

Hazelwood House Happenings



Ian Haustorfer with the Christmas Raffle he won at the hostel



Residents enjoying afternoon tea at Cowwarr Weir which was followed by a lovely drive around the countryside



Bep and Nancy and volunteer Robyn setting out for a walk around the hostel, making the most of sun

'We are happy to announce that despite the recent bushfires in Boolarra the 2009 Folk Festival will be going ahead! We hope that you and your family can come along to support and celebrate our community.' Boolarra Festival Committee.

Friday Night Kick Off for Folk Festival

GIPPSLAND'S favourite music festival, the Boolarra Folk Festival, returns in 2009 and for the first time will include a Friday night set by "old-school" singer-songwriter Van Walker and his band.

Walker, who in 2008 launched what is described as his "bitter-sweet" debut album *The Celestial Railroad*, will provide an earthy, Dylanesque entrée to the free festival, which takes place on the long weekend in March.

Walker's sunset performance will be held at The Arc in Yinnar on Friday 6 March, and will be followed from noon the next day by a nine-hour music feast in Boolarra's central Centenary Park. About 5000 people are expected to attend.

Festival president Ray Stewart said excitement was building for this year's festival.

"We've got some great performers heading out to Boolarra for the first time, a few old favourites, plus all the events and activities that peo-

ple have come to love and expect," Mr Stewart said.

"If you only attend one music festival this year, make it Boolarra. You won't get a festival anywhere that's more relaxed or friendly. And it's free!"

A total of 14 different musical acts will feature. Included in the line up are: the traditional West African Wulaba Drumming Ensemble; Melbourne songstress Cilla Jane; the up-and-coming local lad Josh Stainer, an Xavier Rudd enthusiast; the Celtic infused Rants; and the ever-popular Strzelecki Stringbusters with their wild mix of mandolins, banjos, guitars and fiddles.

Also performing are The Bluegrass Support Group, blues and roots soloist Danny Burton, Esjee, Jo Kelly Stephenson, Khristian Mizzi and the Sirens,

River Crombie, the Boolarra community choir Bool-aria and the Warrior Poets.

The festival, in its seventh year, will also feature a massive market showcasing the talents of local artisans (Railway Park, from 10am). Stallholders are welcome to apply; contact Rob and Marietta Herni on 51696355.

For more information check out the website at <http://boolarra.gippsland.com/Folkfestival>.



Boolarra Festival Market 2008 (above)
Van Walker (below)



Wulaba Drumming Ensemble



Northe's Natter

ing conditions will long be remembered.

To the wonderful people who provided ancillary services, your professionalism and dedication to the task before you is acknowledged and appreciated.

To the wider community, for rolling up your sleeves at relief centres and for lending an ear to the weary and down trodden, we are grateful.

The integral role you played in your neighbours' time of need will continue as they begin their recovery. You have demonstrated that the true Aussie spirit is alive and well.

To the kind-hearted folk who have donated money, goods or services, your generosity has restored their faith in others.

Moments of fear and despair have given rise to repeated instances of courage, bravery and

compassion.

I am so truly proud to represent the people of this electorate.

From the ashes of a stupid, cowardly act we shall emerge stronger and more united.

The tenacity, resilience, strength and spirit that shape this community, whilst sorely tested, have been fortified by recent events and will see us through the challenges ahead.

And finally, to the perpetrator or perpetrators of this evil act: ours is not to wonder why but to seek justice on behalf of those you have affected and to seek changes that will protect other communities from such mindless deeds in the future.



Sometimes life delivers a blow so hard you wonder how you can pick yourself back up again.

Lives tragically lost. There are no words to ease the pain of the loved ones left behind.

My heart and the hearts of the entire constituency ache.

To those who lost their homes and all worldly possessions, rest assured you have our unwavering support as you prepare to rebuild your lives.

To the brave men and women who risked life and limb to protect the people of this region - our unreserved thanks. The selflessness and valour you displayed under terrify-

Café Lé Mac

SATURDAY BIG BREAKFAST

8AM - 12 NOON



Bacon & Eggs

Pancakes

Coffee

Croissants



Scones, Toasts,
Jams also available

Shop 7
Hazelwood Village
Shopping Centre

Phone:
5122 3466



JB Computers PTY LTD

71A, George Street, Morwell 3840
(Opp. Bendigo Bank)

New computers from \$845 with LCD Screen, Used PCs from \$100, Used Laptops \$390, 17inch LCD monitor \$245, 19inch LCD \$290, Pioneer DVD Burner \$55, High Definition TV & Capture Card \$95, Wireless Keyboard, Optical Mice & Charger Pack \$53, 512MB Geforce 8500GT \$109, 256MG Geforce 8400GS \$89, 7100GS 512 shared \$109.

Upgrade Kit: Latest Core2 Duo Main Board, CPU & 1GB DDR2 Memory \$250. Repairs & fault findings from \$20, Labor for upgrade PCs from \$30. Very cheap to fix your PC. DVD Disk:- Ritek, Maxdata, Princo any brand 50 pack \$20, DVD Single Black Cases Box (100) for \$17, Many Brands, Cheap Price.

10% pensioners discount to repair computers.

Telephone: 03 5133 7617

PREKINDER ENROLMENTS CHURCHILL

Latrobe City Council prekinder enrolments are still being accepted for 2009

A prekinder session will be commencing in Churchill and vacancies still exist. Parents are encouraged to submit enrolments now if you are interested in sending your child to prekinder in Churchill.

Children who turn three years of age before 30 April 2009 will be eligible for prekinder enrolment. Parents are required to show proof of the child's age upon enrolment.

If you are interested in enrolling your child, enrolment packages are available from any of Latrobe City Council's service centres and pre-school centres. For further information, telephone 1300 367 700.



Valley Trophy Centre

60 George Street
Morwell



- *Engraving *Personalised Coffee Mugs
- *Name Badges *Giftware and Pewter
- *Glass Engraving *Large Trophy Display

5134 1493

FAX 5134 1334
www.valleytrophycentre.com.au



New Home - Churchill Neighbourhood Centre - Hub

Yes - the new Churchill & District Community Hub is at last ready for business and the Churchill Neighbourhood Centre in bursting with enthusiasm to begin classes at the new venue. Come on down and have a look at the new diggings, see what's on offer, join a class to learn, have fun and make new friends, or just call in for a chat and cuppa - would love to meet you.

The Centre has on offer a wide range of activities to please all comers including:

- *folk art,
- *creative writing,
- *leadlighting,
- *cake decorating,
- *computer classes - MS Word/Access/Excel and Digital Imaging & Photo Editing. There are

classes for the beginner and for those who have not used a computer before. We can help anybody to learn and have fun.

Join our book club - Churchill Bookworms or join in with our Chit & Chat group, watch a movie, read an article and discuss, make a have lunch together or go out for lunch.

There's a Stitch and Chat group to start new craft items or finish those UFO's, or once again come for the social aspect and meet new friends.

There is Patchwork/craft for the beginners and advanced patchwork for the seasoned crafty person.

Then there is E learning - using the computer to access programs to help with spelling, reading, writing and maths. Use the computer to

learn how to use the internet, how to send E mails, learn the road rules. And even look up family history - Genealogy.

How about joining a cooking class in our state of the art commercial kitchen?

For the health a fitness enthusiast join the Yoga classes and learn techniques for relaxation, breathing and correct posture - classes suited for everyone.

Learn how to use the quilting machine and join the 'Gum Leaf' quilters group, for advanced help with quilting and sewing.

Churchill Neighbourhood Centre is located in the Churchill & District Community Hub, Phillip Parade Churchill. Phone: 5122 2955 Email: churchillnc@bigpond.com



Not getting the service you expect from your travel agent?
Call into **Jetset** Morwell, 213 Commercial Road and see Irene, Karen, Joy or Kimberlee, or phone 5134 3388

Churchill Neighbourhood Centre Inc. Ph: 5122 2955

Timetable: Term 1 & 2 Monday 2nd February - Friday 26th June 2009

Monday 10am - 12 noon	Tuesday 10am - 12 noon	Wednesday 10am - 12 noon	Thursday 10am - 12 noon	Friday 10am - 12 noon
Room available for meetings Room 1	Creative Writing A wonderful & stimulating group. Discover your hidden talents by putting pen to paper, and have your writings published. Room 1	Room available for meetings Room 1	Patchwork (advanced) Gum Leaf Quilters Group Learn quilting, material choice, Technique & design Rooms 1 & 2	Lead Lighting Popular & creative class. Create your own designs. Lamp Shades, butterflies, dragon flies, window and door inserts. Studio 1
MS Exel Learn how to use the spreadsheet functions - writing formulas, merging data, sorting information, calculations, switching between sheets & more.	Time for internet/computer use for general public	Open Learning - On Line Study areas that suite your needs - study English, Maths, Learn to draw, Use E bay, Internet for research, and much more	Time for internet/computer use for general public	Computer Basics Gain confidence to turn computer on & understand the basics of the operating system. Learn to use the mouse, open & close programs, create files & folders.
Stitch & Chat craft activity sessions Finish UFO's, socialise, have a Cuppa/chat. Plenty of help and advice from many experts	Room available for meetings Room 2	Room available for meetings Room 2	Craft Activities/ Patchwork For the beginner & novice art/craft worker, come & develop your skills in a friendly & happy environment. Studio 1	Chit & Chat Watch a movie, read a book, make new friends, cook & share lunch. Room 2 1st Friday each month join our Book Club - Churchill Book Worms Room 2
Monday 1pm - 3pm Room available for meetings Booked: 1st Monday each month 2pm - 4pm	Tuesday 1pm - 3pm Room available for meetings Room 1	Wednesday 1pm - 3pm Beginning Writing Having trouble with spelling, reading, writing or maths, these basics are so much a part of your everyday life, let us help you get up to speed	Thursday 1pm - 3pm Patchwork (advanced) Gum Leaf Quilters Group Learn quilting, material choice, Technique & design Rooms 1 & 2	Friday 1pm - 3pm Yoga with Karen Relaxation, breathing, posture suited for everyone. Room 1
MS Word Learn word processing, formatting of text. Learn to create files & folders, edit & save documents, create templates, tables & charts	Night Class - 6pm - 8pm Intro. to Digital Imaging & Photo Editing Create, edit & manipulate images. Remove scratches, adjust colours.		Night Class 6pm - 7.15pm Yoga with Heather A holistic approach of postures, breathing practices & relaxation - assist with balance, strength, flexibility Room 1	Become a volunteer at the centre or Join the Committee of Management
Room available for meetings Room 2	Room available for meetings Room 2	Folk Art Learn different brush techniques, create beautiful & functional items for your home, or gifts for family and friends. Studio 1	Craft activities/patchwork For the beginner and novice art/craft worker, come and develop your skills in a friendly & happy environment Studio 1	Show your support for the Centre Become a member - only \$2.00

LATROBE VALLEY ELECTRIC BICYCLES & MORE

173 PRINCES DRIVE, MORWELL
PHONE: 035133 8888 / 0427 345 434



**\$100
OFF
ELECTRICAL
BIKES**

Latrobe Valley Electric Bicycles
have the **LARGEST** range of electric bicycles

ELMAR'S CLEARANCE

SAVE

CENTRE & MORE

SAVE

173 PRINCES DRIVE, ♦ MORWELL
PHONE: 035133 8888, ♦ 0427 345 434

Opening Week Specials Galore - 12 - 19 February

60% off
recommended retail price of
White Goods

- Kitchen Appliances
- TV's
- DVD Players
- Sound Systems
- BBQ's
- Torches
- Surge Protectors
- Baby's Cots

Nic Nacs available



15 years since Morwell had a
White Goods Store

New Stock Arriving Weekly

Boolarra Australia Day- An Australian Week

By COLIN BRICK

Boolarra Community Development Group

It seems a long, long time ago. After the Latrobe City Australia Day ceremony was finished, I was chatting with Ruth Place, and she asked if I could do a write up for the Churchill News on the Boolarra Australia Day celebration held that morning. I agreed with pleasure. It was a simple positive story that I could knock off in half an hour.

After all, we had had beautiful weather and a large crowd had rolled up to Railway Park, which was in pristine condition, to enjoy the Egg and Bacon Sandwiches and snags, the kids had enjoyed the various games and competitions such as sack races and gum boot throwing, while the adults had just yarned and pondered the trivia questions that had been distributed.

The size of the crowd floored us. This was the fourth year we had held the celebration, and it has grown from 60 the first year to around 300 this year. Fortunately the CFA were manning their BBQ, and with numerous other helpers we were able to cater for the masses, although not a scrap of food was left. Thank you very much to the many helpers who assist in making it such a simple pleasurable event. Congratulations to Amy Hoghton who won the BBQ raffle.

Cr Darrell White, at his third Australia Day function for the morning, said a few words, and then Community Recognition Awards were presented to eight people nominated from the community. Finally the flag was raised; almost the Dutch flag by mistake, which would have been rather embarrassing, and the anthem sung.

It was a lovely simple celebration of Boolarra as a community, and a great opportunity for people who don't often see each other to catch up and for people new to the community to make connections.

The following day I attended a Boolarra function of an altogether more sombre nature. It was the funeral of Megan McCabe (nee Scott), a young mother and wife who had died after a long battle with cancer. Megan had left Boolarra around 10 years earlier, but had continued to play tennis at Boolarra until a couple of years ago. There was a massive crowd at the funeral, due to Megan's involvement in a wide range of activi-

ties, and her lovely, friendly positive nature.

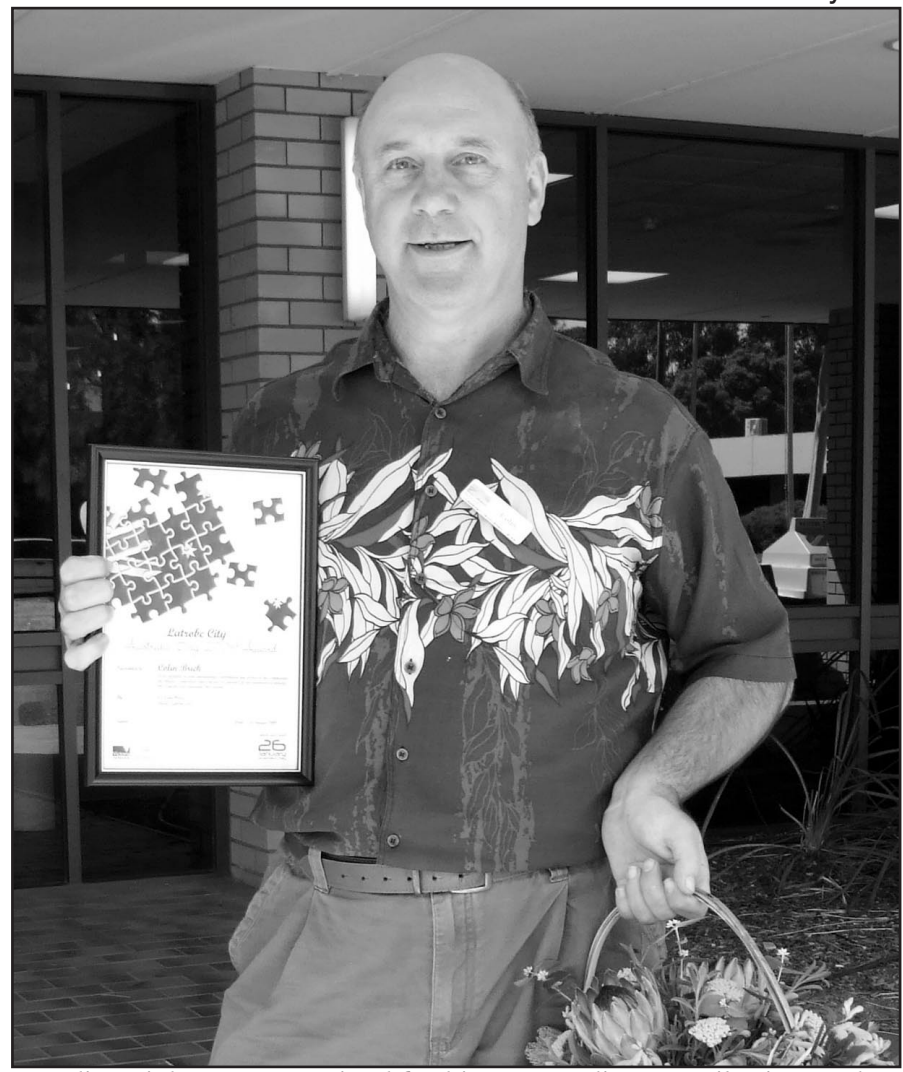
There were many ex-Boolarrites, who had attended due to their friendship with Megan and her parents, Peter and Penny. It was lovely to catch up with them, but we all agreed it was sad that it occurs only in such circumstances. Unfortunately Boolarra has had far too many young deaths in recent years, due to suicide, car crashes or natural causes, and each one pierces the heart not only of the families and friends, but of the community as a whole.

I played indoor tennis at Moe with Megan until shortly before she died, and can attest that the people who spoke at the funeral about her determination, her positive, cheerful attitude, and her continued concern and interest in the welfare of others were spot on. Despite the recurring problems she wanted to participate in life, and to continue to be a good wife and mother to Jut, Harry and Toby.

On Wednesday afternoon the smoke began to rise slightly to the north of the Fish Farm. There began five days in which every waking, and many sleeping, moments were focused on monitoring of wind direction and strength, heat, movement of the fire and the activities of the CFA and the water bombers. Each household was making preparations to fly or fight, to minimize the risks; friends were checking on each others welfare. And we all waited.

On Saturday, Boolarra's number came up. While other nearby communities at Yinnar and Mirboo North fought their battles, the fire moved south and back to the west along the Morwell River ridge line through the bush at the back of the footy ground and Piggery Road, jumped the Boolarra-Mirboo North Road across to the cemetery. Then a SE wind change brought it back towards the south of the town.

Many residents wisely chose to evacuate, in accord with CFA advice to make an early decision. Others who had decided to stay and fight gathered in groups to protect their properties. Meanwhile the CFA had abandoned the breached fire control lines and reverted to asset protection; saving as many houses as they could. They performed prodigies of valour, and many people have told me they thought their house, or that of their neighbour, was gone, until fire trucks would



Colin Brick was recognised for his outstanding contribution to the Boolarra community over many years at the Latrobe City Australia Day Ceremony at Kernot Hall, Morwell

roar up out of the smoke and confusion and aim well directed water at the encroaching flames. Equally amazing was the helicopters skill and bravery to bring their machines in and prevent the certain destruction and loss of life.

Then we counted the cost. At least 21 houses, many sheds and outbuildings, miles of fencing, blackened smouldering bush. Broken shattered dreams. Our hearts go out to those in our community who have suffered.

But, at the time of writing, no one has been injured. The community still stands strong. As I look back over the week I think of the qualities of the people we recognised on Australia Day. Many of them said they were surprised to be nominated, that they don't do much and others are much more deserving. But a true community consists of many people all doing their bit, and

during and after the fires Boolarra has once again dug deep as a community to help and support each other. I think of the qualities Megan showed as she fought her battles; her strength and her laughter and her determination, and I see those qualities as I talk to people of Boolarra, hear their individual stories and admire their courage.

We still have a long way to go. We have to find out what we can do to help those who have suffered damage, especially those who have lost their houses. We need to coordinate the resources of those offering help. As the material damage is repaired we need to understand the impact on people's mental health of the trauma we have been through.

It has been a very long week. A very Australian week.

Recipients of the Boolarra Community Recognition Awards

Pam Crowley, as an active member of the Catholic Church in Boolarra. Pam is always welcoming to other members of the congregation, generous with her time, and always puts great thought and preparation into the conduct of services and events.

Roz Carstairs. Her focus on the people and heritage of Boolarra is obvious in a myriad of roles. Roz has written a history of Boolarra, edited the Boolarra Link, been Secretary of the Memorial Hall, overseeing the Hall's refurbishment in 2008, and much more behind the scenes.

Tony and Linda Minter for their valuable contribution to the Boolarra South Landcare Group, and especially their outstanding effort in organizing the 2008 Environmental Expo.

Jack Richards He has solved many problems for members of the community over the years in his role as J.P. and with his warm friendly personality. He has contributed many hours of voluntary work at the Cemetery, and in 2008

was the catalyst for the very successful Community Auction Day.

Bruce Hall For his efforts through his continuous term of 22 years as President of the Boolarra & District Historical Society, and as a most valuable source of local and family history.

Eileen Jean (Deceased) As the driving force in procuring and relocation of the Multi-Purpose Building, and in establishing the role of the facility which has become an important asset to the community. Eileen also played a significant role in providing for the well-being of the prisoners at the Morwell River Prison Farm. Thank you also to her husband Ken for collecting the award on her behalf.

Michelle Hassett Whether orchestrating Christmas Carols, President of the Kindergarten, establishing the Morwell River NEIP, regulating Ph levels at the school pool, Community Group Treasurer, or organizing The Other Awards and Christmas in July. Her tireless energy is a boon to Boolarra.

What Did You Pack?

A resident of Yinnar wrote this thought provoking piece after the fires in the Boolarra district.

I asked my 4 year old grandson what things he thought were the most important for various members of his family. For his Mum it was her clothes and her bed. For his Dad; the shed. A bottle, a dummy and 'Bee' the doll for his baby sister and for himself, his Ninja Turtles of course.

I asked this question in the wake of the recent terrible fires which have been so devastating for those who have lost so much. I am one of the extremely fortunate people who did not suffer any losses and I have the privilege of now being able to reconsider which items are either most precious and irreplaceable or simply practical and necessary.

I have spoken to a number of friends who have mentioned the sorts of things they packed up in anticipation of evacuating and it has occurred to me that nearly everyone I know is more sensible than me. While some people told me they packed their favourite childhood teddy bears, now threadbare and missing an eye or two, others spoke of wills, insurance documents and birth certificates. Bank papers, passports and house titles were apparently obvious

choices. Valuable jewellery and hand made quilts that were created with love over many painstaking months also made the list. Video footage and old photos and phone chargers were packed, and some even remembered their wedding certificate. These people would be the ones that fall into the sensible category.

Now let's talk about me.....

First I thought to pack the photos which had been saved onto disc, so that was easy. These photos were all the ones taken in the past 5 years or so since we went digital. In addition to the discs, I took the albums of said photos AND the hard drives they were on anyway! What I did not pack were the boxes of old photos from our childhood or our one and only wedding photo.

I did pack a couple of changes of clothing for my husband and me (practical), the novel I was half way through (selfish), my husband's bowls clothes (RIDICULOUS). And because I was thinking of my grandkids being stranded with relatives for possibly a couple of days, I grabbed a couple of their favourite story books and the play dough that they love so much.

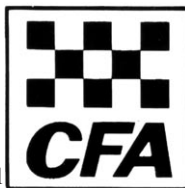
I took these things to a safe location while my husband stayed at home to

protect the house. At this point I realised that I had also packed all of his medication, which he would need, so I returned but was not able to take my car through the road block. Fortunately the policeman on the road block helped us to work out that little problem. I have since found out that my daughter had packed every single pair of her partner's underwear and had to return through the road block to bring some to him. Clearly she gets her brains from me.....

I am so very sorry for the families of Boolarra and Darlimurla who lost all of the things mentioned above and so much more. I cannot comprehend the magnitude of their devastation. I am so grateful that our town (Yinnar) was saved and that I have this opportunity for reflection. Like everyone, I extend the utmost praise to all of the fire-fighters, police and emergency services personnel who fought so courageously for us.

Well, I may not have been able to prove who I was or that I owned my house, and I may not have been able to make any insurance claim even if I'd needed to, but at least I could have finished that novel. And of course, I did have the play dough.

Be Ready



The recent fires and the catastrophic loss of property should have brought home to all Churchill residents the need to be prepared. Fires wreaked havoc in Boolarra. The Glendonald Road fire spread rapidly and, at the time of going to print, is still threatening homes in Hazelwood North.

Summer is not yet over, the threat to life and property is continuing so if you are not prepared then think about making a plan and take a good look at your property. Here are some tips from the CFA.

*Check your eaves. Many in Churchill are growing grounds for weeds, and an accumulation of dead leaves from nearby trees.

*Check around your house perimeter. Do you have wood piled up against a wall? Do you have other rubbish around? Clean it up and get rid of it.

*Branches of trees or scrubs which touch the house should be pruned back.

*Block air vents and under eaves which are open. These are places where flying embers can find a way inside your house.

*Keep your lawns mowed.

*Have a working hose and fittings at the ready. Buckets of water can be placed ready also.

*Have tennis balls to block your down pipes under threat of fire, and

fill the spouting with water.

*Remove anything off decking and block it up if possible.

*Put your doormats or outside carpet inside.

*Report anyone who does not clean up. They are allowing a fire hazard which may also affect you.

*Make a plan - decide if you will stay or go. Don't leave it until too late to decide.

Radiant Heat

Whenever you are near a fire, a T-shirt and thongs, or bathers, are not appropriate clothing.

Cover up with woolen clothing like the fire fighters, to protect your body from the radiant heat which can kill. The real risks of bushfires are heat stroke, dehydration and asphyxiation from the smoke and heat. Covering up can keep you alive. Remember to drink plenty of water to stop dehydration, and find a place where you can take refuge from the direct heat.

Total Fire Ban Days

The CFA, MFB and the government do not call these days lightly. They are called on days when the danger of fire occurring is extremely high, and when fire would be expected to develop rapidly and be extremely difficult to control. They are called for very good reasons and should be observed to the letter.

No solid fuel fires should be lit in

the open. Special permits are sought to light a BBQ or spit. No incinerators can be lit. All permits previously issued are automatically revoked for a total fire ban. Welding, grinding, soldering or gas cutting needs a special permit for total fire ban days. Work using machinery such as slashers, tractors and chainsaws should be postponed. If essential a special permit must be sought.

BBQs or ovens using solid fuels are banned. BBQs which are electric, or gas-fired are permitted providing they are a permanent fixed structure, there is a 3 metre cleared area around and above the bbq, an adult is in attendance at all times, a tap with hose connected is ready for use, and at least 10 litres of water are on hand in case of emergencies.

Portable gas/electric bbqs or stoves may be used if the bbq is located within 20 metres of a permanent dwelling (mobile home, caravans or tents are not classified as permanent dwellings). At least 3 metres of cleared space is around and above the BBQ, an adult is present at all times, a tap with hose connected is ready for use, at least 10 litres of water is on hand in case of an emergency.

Campfires are not allowed under any circumstances.

For more information and advice go to <http://www.cfa.vic.gov.au>.



Aftermath of the Delburn Fire

A Bush Heritage

A Short Story by Kevin Jackson

Margaret wasn't used to late nights nowadays, after all how many are who have seen ninety three Christmas Days pass. However having been invited as special guest by the local council, she decided to attend a gathering at the Boolarra Memorial Hall. The occasion was to celebrate Margaret being presented with an award as the district's Senior Citizen of the year.

As the Master of Ceremonies was clearing his throat and tapping the microphone preparatory to introducing the Lord Mayor, a distant wail of a siren pierced the humid atmosphere. This was

quickly followed by an urgent banging on the door. Constable Ryan burst into the hall and announced there was a bush fire out of control, fanned by a strong wind from the Darlimurla direction, and was endangering the entire town. The hall was soon vacated as people scrambled out on to an open area in the park reserve. The night air was infiltrated with acrid black smoke and flying embers. A helicopter flew south towards the approaching inferno.

Margaret was chaperoned and comforted by her daughter Ruth, as they watched the feverish activity of fire trucks mustering, with the volunteer fire fighters in their orange overalls, some

communicating on mobile phones, others driving off in the trucks to confront the fire.

Margaret watched with the stoicism of someone who had seen it all before and remembered times gone by. Back to a time when as a young mother of twenty three, she sheltered her two young children under a wet blanket in a creek at Noojee as the raging fire surrounded them.

She now watched as the helicopter passed above carrying a giant tub of water. Margaret

thought, 'How times have changed. No intervention from helicopters in 1939.' As the fire engines sped along the road, the drivers in radio contact with the fire fighters at the front line, Margaret continued her reminiscences. 'No mobile phones or walkie talkies in 1939. No fast trucks with huge tanks of water and powerful hoses, only brave hearted men with beaters. Yet with all our modern technology we still have fires in the year 2009,' she sighed.

Churchill Self Storage

THREE SIZES:

3m x 3m

3m x 4.5m

3m x 6m

*Situated at corner of
Switchback Rd &
McCormick St, Churchill -
Across from Churchill
Timber & Hardware*

SECURE ACCESS VIA ELECTRIC GATE & YOUR PADLOCK

Professionals Phone: 0351342790

Contact: **B. J Bennett & Co. REAL ESTATE PTY LTD**
219 COMMERCIAL RD, MORWELL

Morwell Art & Framing

Custom Framing

Restoration Work

Large Variety of Art Supplies

Art Classes

Your Artwork is Handled and Framed by Artists, giving you a Professional Edge

Satisfaction Guaranteed

Fast, Efficient Service

Services include lamination, block mounting, canvas boards made to order

Lea & Rod Jones

49 Chickereell Street, Morwell 3840

Ph: (03) 5134 5515

Fax: (03) 5133 7078



THE BARBER SHED

New to Churchill!

A good old fashioned barber shop!

No appointment necessary

Open
Tuesday to Friday
9.15am to 5.30pm

Saturday
9.15am to 1.30pm

Phone - 5122 1300

Situated in Shop 8
in the brand new
Shopping Centre
(near the fish and chip shop)
Churchill
Look for the barber pole

Churchill Town Centre Plan "Western Extension"

The Churchill Town Centre Plan was adopted by Latrobe City Council in 2007, and has been the subject of much discussion in Churchill about the commercial precinct. The plan also includes a proposed new road between McDonald Way and Monash Way known as the "western extension" or "west link road".

In adopting the plan, Latrobe City undertook to consult further with the community about including the proposed road in the Churchill Town Centre Plan.

The plan does not necessarily mean that the road will be built in the short term, because that will depend on budget priorities, funding and resolution of land ownership.

Introduction

The Churchill Town Centre Plan (July 2007) includes reference to an "east-west link" from Monash University through the commercial precinct, connecting to McDonald Way with a new street link - the "western extension". The western extension proposed in the Town Centre Plan includes a street link from the traffic lights at Monash Way to McDonald Way, with a short link to Walker Parade, as shown in Figure 1. The link to Walker Parade is not an essential aspect of the plan, and it could be excluded if this is the preferred option.

At the time Council considered the plan, a group of residents opposed the western extension. Many are residents around the Walker Parade area, and do not want a street to be constructed through what they consider is an important open space area. They prefer the matter to be resolved, wishing to remove references to it in planning frameworks for the future development of Churchill.

The Churchill Town Centre Plan in 2007 suggested that the parts of Churchill near McDonald Way to the west of Monash Way are not well connected to the commercial centre, the road layout is unclear and indirect, and pedestrian access at the traffic lights is unsatisfactory. The Plan proposed a new street with provision for pedestrian crossings and parking, aiming to resolve these problems and encourage recreation use of the park area.

In December 2008, Latrobe City Council adopted modifications to the Churchill Town Centre Plan relating to the commercial centre. These aimed to achieve the objectives of the 2007 version of the plan, but re-introduce a "swooping" access way between Philip Parade and the northern car park. The modified plan provides for some improvement in access from western areas of Churchill, compared with the 2007 version of the plan. However, it does not resolve the problems of poor street connections between the western residential areas and the town centre. The central issue is whether the advantage of more direct and clearer access via the western extension warrants the cost and disruption of open space near Walker Parade.

Issues

The main issues to be addressed are as follows:

*Pedestrian Traffic: The site is an important pedestrian link between the residential areas to the west of the Churchill town centre and the commercial area, and any changes would have to protect that role.

*Vehicular Traffic: The present distance from Howard Avenue via McDonald way and Philip Parade to the Hazelwood Village car park is

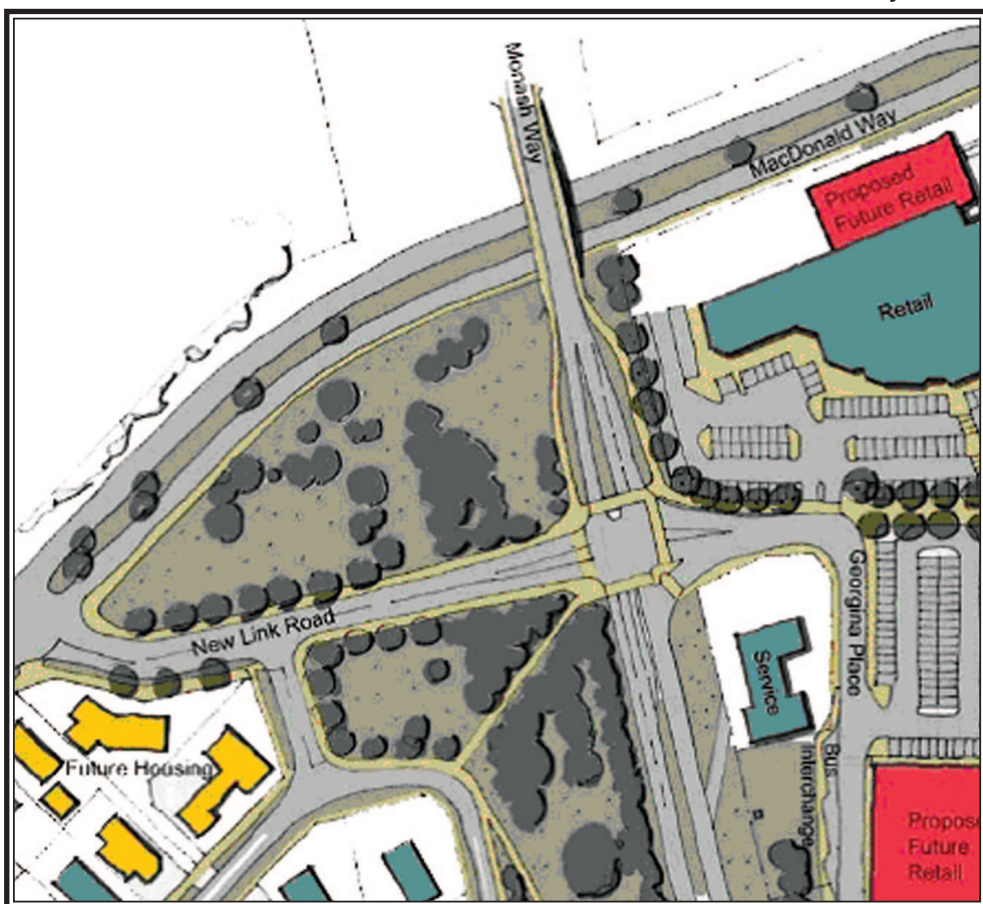


Figure 1: Detail of the Churchill Town Centre Plan (2007)

about 820 metres; this could be reduced to around 650 metres when the modified Churchill Town Centre Plan has been built, and would be around 270 to 290 metres if the western extension was built. Those most impacted by the connection would be residents either side of McDonald Way.

*Open Space: Although zoned Residential, the land has been vacant since the establishment of Churchill in the 1960s, and includes a small playground. Those opposing the proposal for a western extension argue that the area should be permanently reserved for open space, and rezoned from Residential 1 Zone to Public Park and Recreation Zone. There is not a shortage of "local" public open space in Churchill, so any open space role that would be carried out by the area should therefore be specific and defined.

*Housing: Residential development is currently an "as of right" use of the land under its present Residential 1 Zoning, while the Churchill Town Centre Plan proposes some residential development to the west of the site, aiming to improve the perception of safety in the park. However, the Churchill Structure Plan (2007) does not identify the area for housing.

*Estimated Financial Cost: The Churchill Town Centre Plan estimates the cost of the new link road at \$251,000, plus additional costs of up to \$265,000 for modifications to Monash Way. A more detailed cost estimate is that the total cost of the project is about \$600,000. Some costs would also be incurred if the area is developed as public open space. Any of the costs may not be incurred for some time, depend-

ing on budget priorities.

*Flora and fauna: Some trees immediately to the west of Monash Way at the traffic lights would be removed for a new road, and would have to be replaced with new landscaping. The disruption to flora and fauna would have to be taken into account.

More Information

Further information on the proposal can be found on the Latrobe City Council website:

www.latrobe.vic.gov.au/services/projects/churchilltowncentreplan

Alternatively, email Ian Gibson at iangi@latrobe.vic.gov.au or telephone 1300 367 700

What's Next?

Latrobe City Council is now seeking comment on whether the western extension should remain as part of the concept planning in the Churchill Town Centre Plan and the Churchill Structure Plan, or whether references to it should be deleted.

Any residents wishing to find out more, or express an opinion, are welcome to meet with a Council Officer at the Churchill Community Hub on either Tuesday, 17 February 2009 or Monday, 23 February 2009, any time between 4 pm and 8 pm.

Any comments on the proposed plans for the western extension should be forwarded to Ian Gibson, Place Manager - Churchill Town Centre Plan, Latrobe City Council, PO Box 264, Morwell 3840 or email iangi@latrobe.vic.gov.au by the close of business on Friday, 6 March 2009.



Figure 2: Aerial Image of Walker Parade Area (2006)

Monash Gippsland - Rotary Indigenous Scholarships

Up to three \$6000 scholarships are being offered to commencing Indigenous nursing, health and welfare students studying at the Monash Gippsland campus. They will be jointly funded by Monash University and Gippsland Rotary clubs. Applications close on 20th February.

Rotary Clubs in Gippsland have been long term supporters of Indigenous students.

They are committed to supporting local students to gain training to be able to help their communities. Every effort needs to be made to reduce the 17 year shorter lifespan and poorer quality of life of our Indigenous people.

The scholarship is based on the Australian Rotary Health Research Fund Indigenous Health scholarship program previously supported by the Rotary Clubs in Gippsland.

It will increase the level of local participation of the Rotary Clubs in the process, especially in on-going support and mentoring of students.

The new scholarship scheme has been negotiated between the Rotary Club of Hazelwood and Monash University Gippsland Campus.

The scholarships will be awarded to students based on need. Further consideration will be given to students based on Year 12 ENTER scores or equivalent.

They are available for those intending to enroll at the Gippsland Campus and are available for the duration of undergraduate or postgraduate courses. The scholarships are currently advertised on the Monash website www.adm.monash.edu/scholarships/opportunities/gippsland-rotary-indigenous

Preference will be given to students enrolling in an undergraduate medicine, nursing, health and social and community welfare degrees. In the absence of eligible applicants for these courses, students from other courses may be considered. Preference will also be given to Gippsland residents.

However consideration may be given to Indigenous students

from other areas. Where a student is from outside Gippsland, Rotary will attempt to partner the student with another nearby Rotary Club.

Students are expected to attend and speak to the sponsoring Rotary Club and to promote the scholarship program to other Rotary clubs and Indigenous students.

For further information contact:
Hazelwood Rotary

Ross Ollquist 51661207 ollquist@netspace.net.au
Ken Peake 51221728 peake@vicaustralis.com.au
Monash University Gippsland Campus
Alan Scarlett (Executive Officer) 51226421
Alan.Scarlett@adm.monash.edu.au
Kylie Clarke (Koorie Resource Officer/Aboriginal Liaison Officer) 51226472 Kylie.Clarke@adm.monash.edu.au

Save Our Park

By Ronald Bunn & Bruce Stephenson
The Danger

The Walker Parade Open space parkland is under threat. It could be used for the proposed western link road from MacDonald Way to the shopping centre, through the park to the present traffic lights, with another connection to Walker Parade.

A large part of the park could be sold off for private development. A decision on the link road has been deferred by the Council but it will be considered again shortly. Apathy could result in our park going.....

Some Reasons Why

Open space in the centre of a town is precious and must be preserved at all cost.

Estimates put the cost of this link road to over \$500,000 which surely could be better spent elsewhere.

The western link road is unnecessary now that the shopping centre car park is being redesigned with a user friendly entrance from Philip Parade and a new road through the car park to the traffic lights.

The western link road is undesirable because it will deny residents of the opportunity to continue to use the park area as they have done for over 40 years and it will be an unsightly conglomeration of streets and intersections, creating traffic problems and endangering pedestrians. A number of trees will have to be

removed and it will have a detrimental effect on the habitat of the bird life there.

The opportunity to turn this area into a feature central park and gardens will be lost forever.

What You Can Do

Write or ring your local councilor to express your opinion.

Write or ring the Latrobe City Council.

Write a "letter to the editor" of the Churchill & District News or/and the Latrobe Valley Express.

Contact Ron on 5122 1493 or Bruce on 5122 1335 to offer your opinion or show your support (Contact information below).

Make your family, friends, neighbours and workmates aware of the issues involved.

Make the Churchill and District Community Association aware of your opinion.

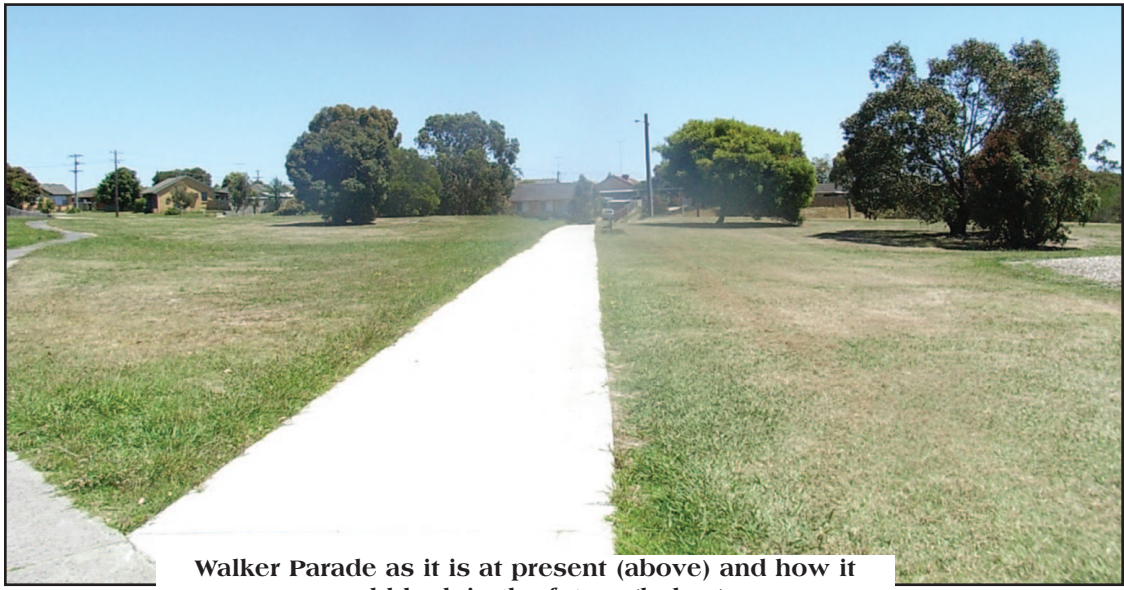
Contact other councilors.

Contact Details for your information:
Councillor Darrell White - PO Box 264, Morwell 3840 - Ph 5163 1461

Latrobe City Council: Contact Ian Gibson or Carol Jeffs - PO Box 264, Morwell 3840 - Ph 1300 367 700.

Churchill & District News - Drop Off at Co-Op Churches or Café Le Mac - email: cdnews@dcsi.net.au

Churchill & District Community Association: Rob Whelan (Sec) PO Box 191, Churchill 3842



Walker Parade as it is at present (above) and how it could look in the future (below)



Letters to the Editor

Disabled Parking Disaster in Churchill

When are we going to get a proper car park? At the moment we have 48% road 52% parking. It looks like an afterthought and the one who made the disabled parking spots is clearly NOT disabled themselves. If you go to the Post Office and you have a wheelchair, there is no place to park so you have to wheel all the way down only to find some so and so has parked over the ramp. What is that useless bit of pull-in? No sign or marking. Lets get rid of some of the roads and widen the car park to Marina Drive and lets do the job properly.

Geoff Marshall,
Churchill.

I am deeply concerned about disabled parking, close to the local Post Office. It seems that it is going to be several months before the new development will be completed so I believe we urgently need some interim provision for disabled parking. To access a vital service like the post office is a necessity for all members of the community. We need to implement some temporary provision for Disabled Parking IMMEDIATELY that allows easy access to the post office.

Valerie Cox
Churchill

Raise funds and



The TRUenergy Yallourn event is becoming quite popular with both runners and walkers keen to complete the 7km course along the Moe Yallourn Rail Trail.

The Walk/Run will take place along the Moe/Yallourn Rail Trail passing through scenic wildflower country and finished at TRUenergy Yallourn's Power Station Viewing Area, where participants and their families can relax and have a bite to eat. Children's entertainment will also be avail to amuse the younger participants.



For further information please visit:
For a sponsorship form please telephone Meredith Bowden on 5128 2960 or visit
<http://truenergy.com.au/Production/Yallourn/Community.xhtml>

ALL PROCEEDS DONATED TO GIPPSLAND ASBESTOS RELATED SUPPORT INC. (GARDS)



Amarante

SHOWCASE JEWELLERS

Jewellers

Valentine's Day ...



- #036 \$650 9ct White Gold Diamond Huggie earrings TDW .25ct
- #037 \$1299 18ct White Gold Brilliant Cut Diamond Eternity Ring
- #038 \$1350 18ct White Gold Set Full Circle Wedding Ring TDW .28ct
- #039 \$1999 18ct White Gold Princess Cut Diamond Eternity Ring TDW .40ct
- #040 \$2899 18ct White Gold Brilliant Cut Diamond Eternity Ring TDW 1.00ct
- #030 \$4450 918ct 2 Tone Gold Pear Shaped Diamond Ring with Grain Set Shoulders TDW .80ct
- #031 \$2499 18ct 2 Tone Gold Brilliant Cut Diamond Ring TDW .61ct
- #032 \$5299 18ct 2 Tone Gold Diamond Ring TDW .61ct



Lilly called me "Mummy"
Thinking of You
My holiday in Europe
We bought our first house
Our first Christmas together



#057 \$8999 18ct 2 Tone Gold Brilliant Cut Solitaire Diamond Ring with Diamond Set Underail TDW 1.56ct

PANDORA

202 Commercial Road, Morwell. Telephone 03 5134 4679

A Churchill & District History Series



Looking Back...

...through the eyes of local residents



The Cranwells of Hazelwood North

By Ruth Place



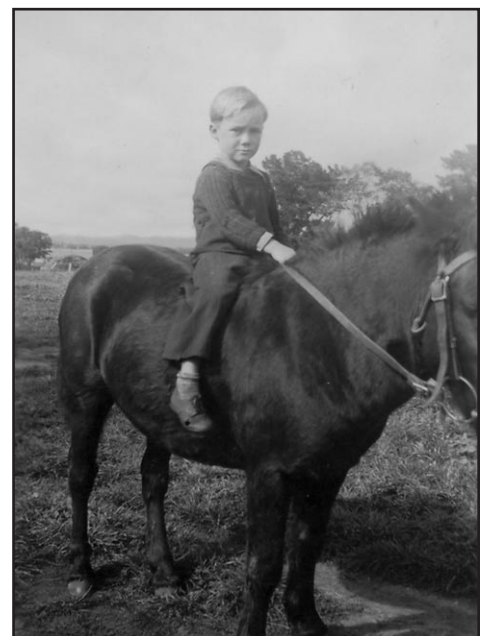
Doug and Max aged 6 months



Phyllis Hewat



Max and Ringer 1946



Maxin 1945



The Cranwell Family emigrated from Essex, England, from a village called Chrishall. James Cranwell married Sarah Jeffery. Thomas and James were two of their eight children. Thomas married Emma Bolding. The Boldings came from Chishill, which is in the

same area as Chrishall. Thomas Cranwells family, with his brother James' family, emigrated to Australia in 1854, sailing on the ship called "Nelens".

Thomas settled in Braybrook, now a Melbourne suburb, and established a dairy farm.

James settled in Essendon and eventually owned a grocery store.

By 1874, Thomas and Emma had fourteen children, of which only eight survived. Albert was one of the survivors (Max's grandfather). These children helped out on the farm which sold milk and butter.

Emma's family also emigrated to Australia, and settled on land in Hazelwood North. Albert Cranwell frequently visited his aunt and uncle, walking or riding a horse from Braybrook to Hazelwood North. It was during these visits that Albert became interested in land in the area, and he encouraged his father to buy land there.

Thomas selected land in Hazelwood North, in 1882, and called it Chishill. Part of the selection procedure involved the purchaser making certain improvements to the land in a given time. These improvements included clearing the land by ring-barking the trees, fencing of the property, done by logs cut from the trees, cutting scrub, drainage of the swampy areas around this area- a pick and shovel job, putting in dams, and establishing a house. Many of the original homes were of wattle and daub construction, until the farmer had the time and money to build a proper house.

Bad bushfires and pests like blackberries and bracken, and huge distances from markets, made a hard life even more difficult.

Albert, Thomas' son, selected land in Hazelwood separate to his father, in 1885. He lived there for a number of years after he married Barbara Thompson in 1898. In 1908, Albert sold his farm and bought Chishill off his father, running the farm as a diary farm.

In 1944, the terrible fires destroyed all the fencing and cattle and farm buildings except the garage, which is still in use today at Max's house.

Albert and Barbara had five children- Nettie, Alan, Doug, Ken and Rex.

Doug married Mary Dunbar, in 1940, and they had three children, Max, Barbara and Shirley.

It was when Max was just a little boy of three that the 1944 fires came through. Mary and Max stayed in the farm dam while Doug and a school teacher Dick Cahill, tried to keep the house from going up in flames. As the grass around the house was very short, this they were able to do, by dousing the places that caught on fire, using buckets of water placed around the house. Max remembers saying "Maxy getting cold", as they were in the water for a long time.

Being a close knit community, those not affected so badly by the fires, rallied around to help those in need.

The Hazelwood North community was also a quite small community which led to many inter family relationships and marriages. For example, three Cranwells married three Thompsons. Descendants of these early families can still be found in the district, with many

still appearing on the Hazelwood North school rolls.

The small community was also very community minded and working hard for the local school, church, fire brigade, football and tennis teams, as well as playing these sports. These occasions were also very important social events which melded the community together.

Max Cranwell was born on 7th November 1941 at Cumnock Hospital in Traralgon. He grew up on the farm next to the school he attended, Hazelwood North Primary, now owned by Evendens. At that time it was a one room wooden building with eight grades of approximately 35 pupils and one teacher. The older grade eight students would help out with the Grade 1s and 2s. A new room came about 1961. Max recalls needing only to leave his home at ten past nine, to be in time for school which started at 9:15am. Max fondly remembers one particular teacher who stayed at the school for several years- Dick Cahill- the one previously mentioned who helped his Dad put out the fires around their home in 1944. He rode out from Morwell each day on his pushbike. Max says the pupils learnt to concentrate on their own work, and not take in the older pupils work. He liked reading, but couldn't stand history, however over the last few years it has become a great interest.

Max says the best part of school was play-time. He would have rather been outside kicking a footy, But he also liked Arithmetic, in which, as a teenager at Traralgon High School, he achieved his highest marks. Friday afternoons were sport time for the boys, with the teacher, and handwork for the girls with the sewing mistress. Games played at school included chasey, rounders, hopscotch, brandy, basketball which was netball in those days. Max's Dad would come over to the school at lunchtime and umpire footy for 15-30 minutes.

His Dad was also on the School Council. Max remembers him asking what he would like in the playground, to which he replied seats. They got them.

One of the features of the school ground in Max's time was the row of pine trees, which he estimates were about eighty years old at the time, have now been pulled down.

Heating of the classroom was by an open fire. This was not very effective declared Max, unless you were near the front on the fire side of the room.

A leather strap was used to give "the cuts". This was a slap across the open hand with the strap.

Other teachers who came to the school were boarded by the local families for 3-6 months at a time. The one who followed Dick Cahill, had a good tennis style and taught Max the latest style. Max is still enjoying playing tennis very successfully.

On another occasion when Max's Dad was laid up for three months with a hernia, one of the teachers came in to help him milk each day. This teacher also encouraged the kids to have a go at all sorts of things including different sports like lacrosse.

Wednesdays were dairy farmer's day in

Traralgon. Max parents went, so Max would have to go home to Sonny and Frances Jones's place and stay until his parents picked him up.

After finishing Grade Eight, Max went to Traralgon High School and started in Form 3 straight away. As he had not done Form 1 and 2, he had missed out on Algebra classes. One teacher offered help him catch up in his spare time and after school. Sonny Jones and Graham Cranwell also went to Traralgon High School, so three sets of parents took turns to run the boys to the traffic lights just north of where McDonald's is in Morwell, where they caught the bus to school at Traralgon. As his Mum didn't drive, when it was his week to take the boys, his Dad had to do the milking earlier, to get the boys to the bus on time. Max remembers playing marbles while they waited for the bus to come.

Max did Form 3 and 4 at High School, obtaining his Intermediate Certificate.

Max did not like history or English expression while at school. But in the last ten years or so he has gained a great interest in History, Geography (including map reading) and has continued his passion for reading which has helped him establish his family tree.

At sixteen, Max left school, and went to work on the family farm, milking cows, which he continued for forty-six years.

But farming was not the only thing which occupied Max in that time. He knew the importance of the fire brigade through personal experience, and so he became a member. He says in the days when he started, it was knapsacks on the back to put out fires. Once he found himself surrounded by flames, unable to escape due to the weight of the knapsack. The steep hills of the Jeeralangs were always a dangerous challenge which he didn't particularly like. The Hazelwood North Brigade's first truck was an Austin Truck supplied in 1955. That made fire fighting much easier.

In the time Max has been a member he has served 18 years as Secretary, and 10 years as Chairman. He is now on the inactive list, but was made a life member in 2002.

Max too followed his Father's example of community involvement when it came to being involved with Hazelwood North Primary School serving on the council for 15 years. Max regularly attended working bees.

Since 1954, Max has played tennis for Hazelwood North, Morwell South, Traralgon South and Morwell East, being President of Hazelwood North for some years.



Tim's wedding in April 1994



A Churchill & District History Series

Looking Back...

...through the eyes of local residents



Hazelwood North was famous for its afternoon teas. Max would take cakes or sandwiches, while May Thompson always made sponge lilies (cream horns), or a sponge (a tradition which the girls have continued). There were scones and sandwiches as well.

Max also played Baseball for the Traralgon Dodgers and was an inaugural member of Churchill Braves. He also played Badminton.

The Traralgon Show was another of Max's interests, where he was an art steward. He boasts that he has attended every Traralgon Agricultural Show since 1941. The original Hazelwood North Hall was near the school on what is now the basketball court, it was burnt in the fires. In November 1961 a second hand building obtained from the SEC was brought by Fowlers who were employed to locate it on site, placed it and then removed the jacks. That night a thunder storm occurred with much lightning which struck the building in the middle with such force it blew it apart and it collapsed. The hall was rebuilt by locals with the help of two carpenters from Traralgon. In November 1962 Max turned 21. The birthday celebrations were the first official function in the new hall.

Max has been a regular church member all his life and since 1984 has been an ordained Elder in his congregation.

Max has been interested in politics, in action groups. He is not a fan of political parties, but likes to think and vote independently.

Max was chairman of one of the committees in the planning of the Hazelwood House Hostel in Churchill.

Phyllis Hewat was born in Morwell Hospital (now St. Hilary's) on 29th December 1945. She attended Commercial Road. Primary School. She remembers going to school on the semi-trailer bus. It was the time of free milk which was delivered to the school in third pint bottles. "It was sometimes 'off,'" she stated, "and in the summer it was warm and dreadful."

The first day of school she remembers she was so excited that she said "good-bye" to Mum and off she went. She was the baby of her family, so had seen her siblings go to school and wanted to join them. There were big pine trees at Commercial Road. Primary School and Phyllis loved to make pine needle houses by piling up the pine needles.

There was a lady who lived two doors down from their home who had chooks. Once Phyllis visited and used the eggs to make mud pies. She was not very popular!

Phyllis describes herself as an average pupil, who liked Geography. She started High School at Morwell in the first year the school opened. There were no desks. They sat on the floor to start with.

Phyllis represented the school at swimming. A highlight was to go to the Olympic Pool in Melbourne for the school sports.

An out of school activity was square dancing which was done at St. Mary's Anglican Hall in

Latrobe Road, Morwell, from age 14, and later old time dancing from age 15-18 years, being awarded several medals.

After completing Form 4 successfully, Phyllis worked at the Telephone Exchange for the PMG (Post Master General). During this time, a girl-friend she had met at school, and with whom she worked, invited her to come along to Young Farmers. It was a great organization, enthused Phyllis. Public Speaking debates were a big part of the activities, on Group, District, and State levels. Phyllis won a few debates, and one year was the Senior Most Progressive Member. Other popular activities were dancing and car rallies. It was at Young Farmers that Phyllis met Max. Max would turn up at Phyllis's work and play table tennis during lunchtimes. They went together for one year, were engaged for one year and then married at St Andrew's Presbyterian Church in Morwell, and came to live on the Hazelwood Road property and have been there ever since.

The Cranwells have four children- Tim, Leanne, Melissa and Amanda. They all attended Hazelwood North Primary School and did their secondary schooling at Maryvale and Morwell Technical College. In that time Phyllis served on the Mother's Club doing pie and lamington drives, working one day a week in the canteen (this continued at High School also), went on day trips and camps. The mums did the cooking. She went to Melbourne, Koonawarra, near Dargo and Woorabinda near Yallourn North. As well she took her turn hearing reading, doing sausage sizzles and being President and Secretary of the Mother's Club.

There a time of tenseness when some of the lecturers (from GIAE) and their wives joined the school organisations. They were from backgrounds very different to the farming community. But after a while the locals realized they were all working for the same outcomes, and all was well.

Phyllis also did other activities. There was RE (Religious Education) teaching at Hazelwood North, and Morwell Park Primary School. Ladies Guild for the Hazelwood North Church was mostly a social time, but one special day in October each year, they had a fund-raiser. Guilds from all around congregated, listened to a guest speaker talk, had a craft stall, and afternoon tea. On other occasions they would go for picnic day trip to Governor's Hut, a simple hut in the bush where they would enjoy an open fire and a walk in the bush.

Phyllis is also on the Hazelwood North hall committee being Secretary for 20 years.

As a Red Cross helper, Phyllis participated in Red Cross Calling each year. She said it was a great way to catch up with all the neighbours near and far each year and see how things were going for each one upon which she called.

Sunday School teaching was also on the agenda, as well as being a Guide Leader. Phyllis had been a Guide as a child, in Morwell from age 12-16 years. At Hazelwood North she had helped

Mavis Thompson when just married, then as her girls got involved. She was persuaded to take on the role of Leader when it became clear that Guides would fold due to lack of a leader.

Being involved with the kids sports saw Phyllis transporting and cheering for their teams.

Phyllis was one of the parents that helped start Ulinga Gymnastics Club, with Phyllis as the inaugural president.

It began at YMCA, Traralgon High School, then went to Kildare College, and is now at the old milk factory on the Glengarry Road. Phyllis was awarded a Life Membership, something which was totally unexpected, but which she says was very much appreciated.

A memorable experience was when the Cranwells played host to an overseas student, Jane from Denmark. A correspondence has continued over the years.

When Amanda, their fourth child was a baby, Phyllis with other young mums talked about and initiated an early form of play group, by meeting at each others homes. When the children started school it dispersed.

As well as supporting their children in their sports, both Max and Phyllis played their own sports including baseball, tennis, table tennis and badminton.

Badminton was very popular and was played over many years. They played at Flynn, Toongabbie, Glengarry, Tyres, Morwell, Moe, Boolarra, Yinnar, Thorpdale and Narracan. The story goes that one night they played at Narracan and when they came to leave it was a real pea souper of a fog. Don Evenden sat on the car bonnet to tell the driver when there was corner coming because visibility was so poor.

But it has not been all been hard work, with memorable holidays over the years, including a trip to New Zealand for their honeymoon, a trip to Europe and the UK, and many trips caravanning around Australia (Mum, Dad and kids) and to all Australian capital cities. When Jane was here they spent five weeks touring around Alice Springs and Darwin.

Many memorable moments are recalled of these trips. One is Max being allowed to stay in the cockpit of the Jumbo plane as it landed at Heathrow. While flying over Russia at sunrise they were followed by a fighter plane. Another was the joyful re-union with Jane in Denmark.

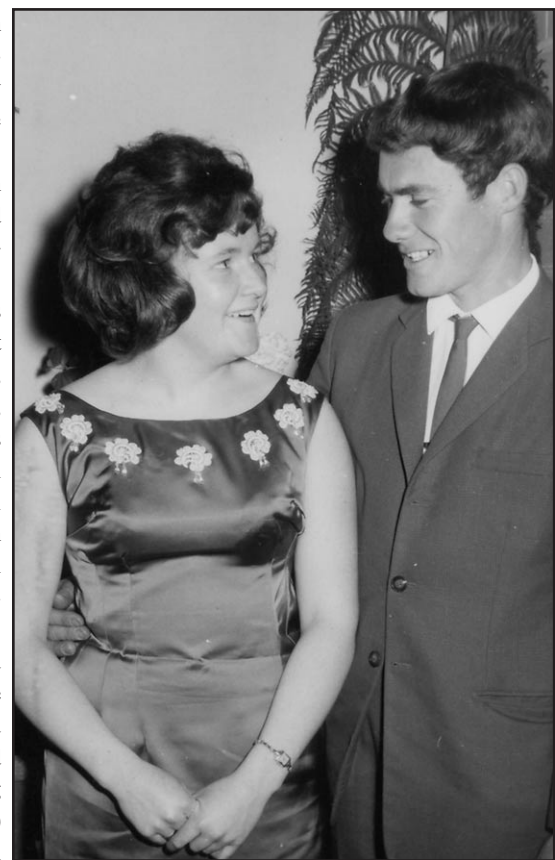
At one point in their lives, following the death of Max's dad Doug, The Cranwells considered moving to Shepparton to live and farm. They went to see a Real Estate agent and he said that the farm at Hazelwood North would sell really well as Hazelwood North was "the place to live". Well the decision was made to put the farm up for auc-



Phyllis and Max August 2005



The Cranwell Family June 1979



Max and Phyllis at a Young Farmers Ball in 1964

tion, but it didn't sell. They spent some time being unsettled, and then decided to stay at home.

Max says that the Hazelwood North community is a terrific place to live. They have no hassles or problems. They love being where they are, still involved with and part of, a supportive community.

We thankfully acknowledge the use of "The Cranwell Family" by Leanne Cranwell (Harris), for the early history of the family.



Hazelwood North Hall was stuck by lightning in November 1961. Pictured is the church congregation the following day

NEW CHILD CARE CENTRE

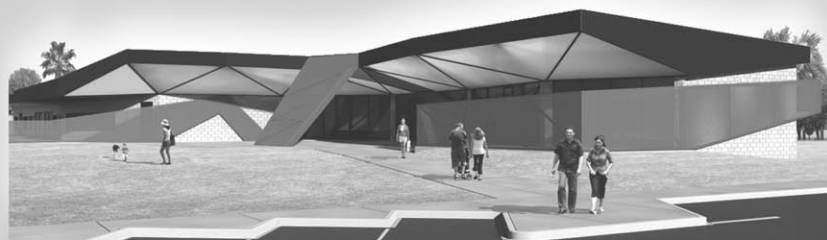
Pooh Corner

is in the New Churchill Hub

- *New Central Location
- *New Facilities, New Equipment
- *Same Caring Staff

Open to all families within the community

- Care available for 0 - 5 year olds
- Full time, part time or occasional care provided
- Child care benefits and rebates available for eligible families
- Open 6.30am – 6.30pm Monday to Friday (Starts 2009)



Book now for 2009

Call Jodie or Bronya on 5122 6227

Email: pooh.corner@general.monash.edu.au

www.mugsu.org.au

Churchill Hub, Phillip Parade, Churchill Vic 3842



"Whilst the centre is new and furnished with new toys and equipment, one thing remains the same and that is the high level of caring and professionalism practiced by all our Staff at Pooh Corner"

MONASH UNI CHURCHILL STALLS AVAILABLE GRAZZ-A-PALOOZA DAY

Tuesday 3 March

- * Businesses
- * Community Groups
- * Retailers
- * Individuals

A big day with stalls and live music is planned, we anticipate a large student & public presence for the day.

Interested in getting a stall, or have any queries; contact **5122 6622** or email: Jeffrey.lancaster@general.monash.edu.au

MUGSU 0 Week

2 March (Monday)

Student Fluro Party

3 March (Tuesday)

Grazz-A-Palooza day

4 March (Wednesday)

Regge Band Night

5 March (Thursday)

Activities in Lounge

6 March (Friday)

Activities in Lounge

**MONASH UNIVERSITY GIPPSLAND
STUDENT UNION**
www.mugsu.org.au

Need a Venue?...Hire the Union Lounge

21st, Wedding, Birthday, Group Function or just to party with friends and family.

- Seating for 200 people,
- Bar service -
- Safe & secure environment -
- Stage & dance floor -
- Projector and large screen -
- Catering & BBQ facilities -
- Tables, chairs & couches -
- Outside undercover area -
- Unlimited parking -
- Available all year round -

INSPECTIONS WELCOMED
PHONE: 51226622
www.mugsu.org.au



Lions Club of Churchill and District Australia Day Awards 2009

By Ruth Place

Peter McShane of Churchill and District Lions was the MC for the Churchill's Australia Day ceremony.

Welcoming everyone on behalf of the Churchill & District Lions Club and the Latrobe Council to the 6th Australia Day celebration held in Churchill, he thanked everyone for their support. A special welcome was afforded to local Cr. Darrell White, a regular attendee at these celebrations who said a few words to those present, on behalf of the Latrobe Council.

Peter welcomed and thanked Peter Tait and the Guides and Scouts who were again assisting with the staging of the event. He then invited the Scouts and Guides to perform the ceremonial raising of the Australian Flag to commemorate the day. The singing of the National Anthem followed led by two Scouts.

The announcements of the Churchill Young Citizen of the Year Award and the Churchill Citizen of the Year Award were then made with Darrell White presenting the plaques.

Churchill Young Citizen of the Year for 2009 was awarded to Dale Murphy

Dale is young man who:

*Enjoys reading the dictionary to find new words to describe his sister. She in return describes him as big-headed and arrogant.

*Sports mad and has played junior football and cricket for Churchill.

*At four years of age, in his hurry to grow up, he borrowed his brothers shaving gear to try it out. He looked like he had done ten rounds with Muhammad Ali when he finished.

ished. More cuts than face!

*When Vice captain of Churchill Primary School, he tried to show leadership in the wrong area and short circuited the entire school computer system.

*Has a willingness to work hard to achieve his personal goals which makes him a special person

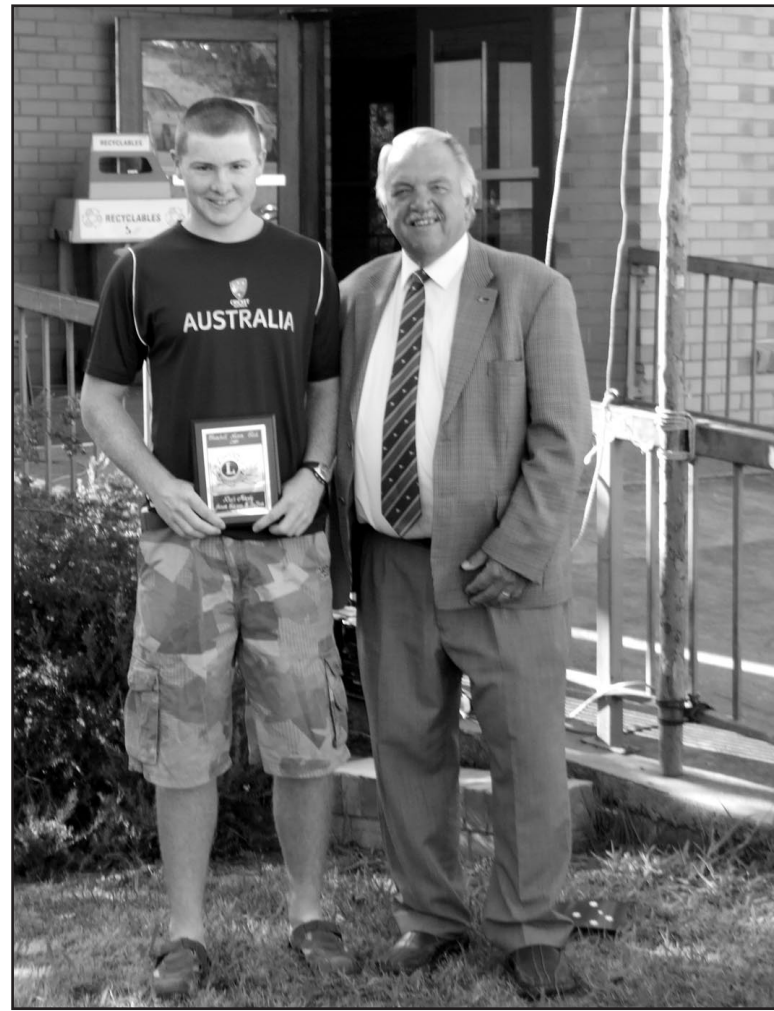
*Has achieved very high standards with sport and education.

Dale's philosophy is to never waste an opportunity. There are so many people who never have the opportunity to achieve, he says he will try to make the most of each opportunity which comes his way, and work hard. Although Dale may have natural ability he has not let it go to his head. He will attempt to perfect something he has learned and then turns his talents to assisting others who need help.

Dale was Dux of his class on numerous occasions including Dux of Kurnai College 2008. He speaks to other students at Kurnai as a motivator at the request of his teachers. He has been offered a position by Monash University to study his passion - Environmental Management and Engineering.

Dale is also a member of the 2008 Yinnar Senior Football team and played in the Premiership team, a member of Yinnar Cricket Club "A" grade team, Vice captain of Traralgon Cricket Club in GCL and has trained with Gippsland Power for three years

On ANZAC Day 2008, he was requested by Mal Bugg from Morwell RSL to deliver a key note address on the topic of war and what it means to today's youth. His speech about his grandfather being a Rat of Tobruk touched everybody in the very large crowd.



Dale Murphy receives his Churchill Young Citizen of the Year Award from Cr Darrell White

Churchill Citizen of the Year 2009 was awarded to Val Prokopiv, volunteer Editor and Treasurer of Churchill and District News.

It was with an enormous amount of pride and happiness that the Churchill and District News team welcomed the news that our Editor/Treasurer Val had received this award. It is so well deserved. Val puts in countless hours of volunteer work to do all she does for our community through the Churchill News, which the team is sure you will agree, is an award winning newspaper.

All this and she works full time, as well as caring for her family and its needs.

As Editor Val is responsible for what is printed in the Churchill News, receives articles and photos, edits and sorts them for inclusion. She writes articles, designs advertisements and is responsible for the lay out of the paper. Val acts as treasurer, is involved in the competitions, the Churchill Festival, edited Churchill & District News history book, 'Looking Back', helps run the Junior Fishing Competition and maintains the website.

Val is also very aware of what is acceptable and what is not, to keep the paper on the right track. She is very attuned to what might be offensive and hurtful, and will not include such parts.

For the rest of the committee she is a wonderful support and help, a good thinker and a very dedicated Churchill News team member.

The team insisted that she include a report of this award in the paper.

This is how Peter McShane of Churchill Lions introduced Val prior to her receiving the award

"On top of all that she does for the newspaper, Val has also been a strong contributor to the Neighbourhood Watch group, has been involved with the Glendonald Residents group committee, and a major organizer of the very successful Junior Fishing Competition, run under the C&DN banner.

Val arrived in Australia in 1989 after a lot of flogging from husband of 30 years Peter and to quote her - "Never looked back." She loves the weather, people and the friendship. Was readily accepted into our community and claims that the beauty of Australia is that when you put in you get heaps back in return.

She will not propose an idea unless she can be involved."

In accepting the award, Val congratulated Dale on his well deserved award. Then Val thanked the Churchill and District News team and her family for their support, the Scouts and Guides for their part in the celebration, and the Lions Club of Churchill and District for making the Churchill Australia Day award possible. She said she was very proud and humbled to be the recipient of such a prestigious award.



Val Prokopiv receives the Churchill Citizen of the Year award from Cr Darrell White



The wonderful Churchill & District News Team (above) L-R Matt, Tracey, Ruth, Karen, Alan, Wendy and Peter (front) of which I am proud to be a part! Pictured left are Churchill's fantastic Guides and Scouts and their leaders who do us proud each year!

Alan Edward Davies

29 August 1936 to 10 December 2008

A hardy-handsome farmer who loved the land, his families, the Filipinos and Lumen Christi

Eulogy by Michael Parer neighbor and mate

Alan Edward Davies the farmer, as Gerard Manly Hopkins said of Felix Randal the Ferrier, 'He is dead now. We have watched this mould of man, big-boned and hardy-handsome pining with fatal disorders'.

From Liverpool, to Cyprus, Dandenong, Hastings, Boolara, Bass Straight oilrig and Rickard Drive in Churchill Alan loved the land, his family, the Philippines and eventually Lumen Christi.

Alan Edward Davies was born 72 years ago in England.

He was a 'ten-pound Pom' and his fourth wife Thelma came to Australia for her first marriage as a 'mail order bride'.

In between there are rich personal histories.

Alan and Thelma lived for fifteen years in Boolarra and Churchill. We acknowledge the Gurnai Kurnai clans, the traditional custodians who peopled these lands for sixteen hundred generations and lived in harmony in this rich hunting area that gave them food, warmth, comfort and family life. We have inherited their land of the tall mountain ash trees. Now felled.

I thank Thelma and Alan's families for the privilege of offering a eulogy to celebrate their lives together since they first met at Dandenong in 1991.

At twenty Alan was a private enlisted at Liverpool 3rd January 1955 in C Company Number 3 in Platoon the British army for seven years on the home front, in Egypt and five years with the Cyprus peacekeeping force. He gained his Associate Diploma in Engineering. Alan loved the Mediterranean army life, was a model soldier and left on 10th January 1962 with a General service Medal and a citation as a superb trainer and handler of guard dogs.

He married Jean at 27 and fathered Christine, Elaine, Steven and Gary. He loved their visits and constantly sang the praises of his grandchildren and Rachel's new born. In his sickness he saw his eternal life extended in his progeny especially the grand kids.

With Jean and Christine he became a 'ten-pound Pom' and sailed on the Oriana to Port Melbourne to follow his dream to be a farmer in the grand procession of convicts to Van Diemens land, immigrants to Port Jackson and the Caroline Chisholm agency that supplied wives to the shepards from Nepean to the Port Phillip District.

His Don Quixote Impossible dream was to earn enough to be an Aussie farmer

Alan had a wonderful love of the land - his garden, flowers, fruit trees and vegetables. He loved simplicity 'if you can't pay then don't buy' was his mantra.

They rented in North Melbourne and Alan got a job with Dow Chemicals and built an AV Jennings home at Altona where Elaine, Steven and later the baby Gary was born at Williamstown hospital. With a new job with Esso at Hastings they settled at Shoreham. Regretfully the marriage broke and Alan with a new wife Anne and her two children bought at Rosebud. A third marriage followed to Laurie. He was ready to make a dream move for his life as a farmer.

Thelma came to Australia in 1983 as a 'mail order bride'. Graeme her first husband had many Philippine mates in General Electric and went with them to Thelma's home village of Tubigon in the Province of Bohol in the very centre of the Philippines. There he proposed.

Thelma waited and waited for her visa and all the time her future mother in law was preparing the nuptial celebrations. 'Can you imagine my first plane trip and never before being outside my county. I went directly from the Melbourne airport to the Anglican Church. She recalls, 'you really don't know what you are getting as Mail order bride. It is potluck, you don't know if you'll be living in city or bush, you wonder of the weather, the people, the shopping. I didn't know where Caulfield was when I arrived'.

They lived in Dandenong and had Elaine and Rachel. Unfortunately the marriage ended in 1988

Alan and Thelma first met at a break up party in Dandenong in 1991.

Thelma was attracted to Alan's wonderful love of both families.

From the start I loved him because he loved just not me, but my kids and all especially visiting my family in the Philippines'.

Alan bought his dream 45 acres farm behind the prison at Boolarra, adjoined to a neighbour and was working on the Bass Straight oil rig.

After 19 years with Esso Alan retired. Thelma transferred from the Melbourne General Post Office to the Morwell Mail Centre.

They lived and worked on the farm as was Alan's dream and in 1995 on holidays with Alan on the 11th floor and Thelma on the 3rd floor he said 'Lets get married'. They did in a civil ceremony.

The Boolarra drought was tough - buying feed and selling the stock for a pittance - not worth it so they decided to move on - put the farm on the market and sold in two years then looked for another dream spot that they found on Rickard Drive.

Their veranda looked out over the pondage and to the Thorpdale hills. As Gerard Many Hopkins would say their home 'was charged with the glory of God that would shine out like shining from shook foil' or silver paper, where 'nothing was so beautiful as spring when weeds in wheels shoot long and lovely and lush'.

He treasured being a famer and living on the land - a capable handyman he prized the open space working with chocks, chopping, grafting trees, mowing, growing vegetables, painting, building sheds, riding his tractor and dare I say it burning off the scrub.

Alan cherished going to the friendly Philippines who valued his friendship and his love of Thelma. He built fence for the school that has 'donated by Alan Davies' - 'now I can be remembered forever'. But like Osiamandous now a cement security wall has replaced his fence.

Australia is the lucky country with two diverse cultures of Anglo Saxon English in Alan and the Asian Filipino in Thelma. Their love and lives together challenge many Okka stereotypes. We are richer for them living among us.

To his love of the bush and Thelma and the Philippines was added another affection. Thelma asked that he join her to get a blessing from the church on their marriage. For her sake he agreed. Alan was my mate, we watched his St Kilda football matches lose more than they won, we rejoiced that my South won in 2005 after 72 years, as we drank wine and sipped tea. 'Well Mike it's a bless-

My All Body Needs

Kate Myall is please to announce she is now operating from Churchill Chiropractic Pty Ltd.

Kate will be available for Aromatherapy and relaxation Massages from 10.00am to 5.00pm - Monday, Thursday and Friday.

Kate Specializes in:

- ▮ Aromatherapy
- ▮ Relaxation Massage

1/2 hour and 1 hour appointments are available. pricing is \$45.00 for 1/2 hour or \$60.00 for 1 hour

for booking please call:

0400 834 695

Churchill Chiropractic Centre Pty Ltd
Hazelwood Village, Georgina Place
Churchill Victoria 3842

ing that Thel. wants, doesn't mean much to me so I'll go along with it'.

Thelma was married in an Anglican Church and was free to marry in the Roman Catholic Faith. But Alan's English birth, baptismal certificates were all bombed in the war. Eventually Alan and Thelma were each married a she a third and he a fifth time here in Lumen Christi.

In this Parish he discovered the rare experience of a genuine Jesus shaped community of honest welcoming folk. According to Mally, my beloved he was among the best readers at Mass and gave it all he had.

Borrowing from Gerard Manly Hopkins I conclude:

Alan Edward Davies the farmer is dead now

We have watched this mould of man, big-boned and hardy-handsome pining with fatal disorders

Sickness could not break him. Impatient he cursed at first, but mended being anointed and all

Ah well, God rest him all roads ever he offended!

This seeing the sick endears them to us, us too it endears.

His words taught comfort and touched our hearts

Now he is far from all his more boisterous years

Powerful amidst peers did he fettle his lands in England, Cyprus, Hastings, Boolara, Bass Straight and Rickard Drive.

He loved the land, his families, the Philippines and eventually Lumen Christi.

He lives on in his children's children and in our memories.

He was a great contributor to life and we are all the richer for having known him.

May Alan's memory strengthen Thelma, Christine, Elaine, Steven, Gary, Elaine and Rachel and all his descents and friends.

Requiem in pace

SCHOOL RE-UNION

Grade 6 students of Churchill Primary School in 1978 are invited to a class re-union on 14th March 2009.

The day will begin at Churchill Primary School with a school inspection, followed by morning tea.

A dinner is to be held that evening at the Football/Netball Club rooms at Gaskin Park.

Come and get together and share stories, remember, and reminisce about "the good old days".

Memories long forgotten will be remembered with fondness.

No more wondering "whatever happened to ?".

COME AND FIND OUT

For more information please contact Debbie Camp (Birse)

Phone 07 47765625 or 0417 626 283 or Email Debbie.camp@bigpond.com



Olive Brown

FOR ALL THINGS GORGEOUS

Tess Sherritt

- *Miss M Handbags
- * Painted Ponies
- * Nook Art
- * Wrought Iron Wall Art

234 Commercial Road, Morwell
Next to The Warehouse

Ph: 03 5135 3960

Email: olivebrown@aapt.net.au

**Churchill
HIROPRACTIC**

Dr David A Forsy, Chiropractor
Laberta K Forsy, MSc, Dietitian

Hazelwood Village Shopping Centre
Churchill

Phone: 5122 3336

PLAYDON Pty Ltd

Rec 18380

ELECTRICAL SERVICES

*COMMERCIAL *DOMESTIC *INDUSTRIAL

ALL TYPES OF ELECTRICAL WORK

- ⊕ Underground Installation
- ⊕ CBus Systems
- ⊕ Safety Switch etc. testing
- ⊕ New Homes / Renovations
- ⊕ Switchboard Upgrades

Phone: 0438 095 536

Servicing All Areas

New bus service for Monash Gippsland and Churchill

A new direct run bus service from Morwell Railway Station to Monash University Gippsland and Churchill Shopping Centre is now in operation and will operate during the university's 2009 first and second semesters.

Latrobe City mayor, Cr Lisa Price, said the 'Churchill Shuttle' bus service connects with peak time morning and afternoon V-Line services at Morwell Railway Station.

"While the new service is specifically designed to improve travel connections with V-Line train services for students and staff studying and working at Monash and the Gippsland Education Precinct, the service is available for the wider community to use," Cr Price said.

"We encourage the community of Churchill to take advantage of this service and particularly to take the opportunity of the morning's direct run into Morwell.

"The service will run as a pilot program and will shorten travel time to and from Churchill compared to current services which travel via MidValley," Cr Price explained.

The shuttle bus service replaces the taxi service currently subsidised by Monash University and previously available to Monash students and staff. Monash will continue to support a subsidised taxi service to meet other trains.

The new morning service meets the eastbound V/Line train which arrives at 8.49am at Morwell Railway Station. The shuttle bus will arrive at Monash University at approximately 9.10am, the Churchill Shopping Centre at 9.15am, and will return to Morwell to deposit any passengers from Churchill at the Morwell Bus Terminus at 9.35am.

The afternoon service will depart from the Churchill Shopping Centre at 4.45pm, Monash University at 4.50pm, and terminate at the Morwell Railway Station in time for passengers to connect to westbound V/Line service which departs the Morwell Railway Station at 5.13pm.

Latrobe City's coordinator community development,

Heather Farley, said intending passengers should note that the morning service will depart, and the afternoon service will terminate at the Morwell Railway Station rather than the Morwell Bus Terminus.

"This is specifically designed to facilitate rail users and will be evaluated within the first months to ensure there is no confusion amongst passengers," Ms Farley said.

The service will operate Mondays to Fridays (excluding public holidays) during the university's first semester (until 5 June 2009); and throughout the second semester (6 July to 26 November 2009)

Single trip fares are: full - \$2.20, concession \$1.30; and daily fares are:

full - \$4.40, concession \$2.50.

Ms Farley said that transport is consistently rated by rural and regional communities as one of the most significant barriers to accessing services, employment and social networks.

"This project is one of many strategic transport opportunities from the 'Linking Latrobe Connections Program' which is a joint initiative with Latrobe City Council, Department of Planning and Community Development, Department of Infrastructure, Department of Human Services and Department of Education and Early Childhood Development.

"The research into this service was supported by Bachelor of Medicine/Bachelor of Surgery (MBBS) students who participated in a community based practice placement program at Latrobe City. The students undertook a users' survey to contribute evidence which initiated the funding for this service," Ms Farley said.

The shuttle bus project is funded and supported by the Department of Transport and is an outcome of collaboration by Department of Transport, Latrobe City, Latrobe Valley Bus Lines and Monash University.

For further information contact Deborah Brown, community development facilitator Linking Latrobe Program at Latrobe City, telephone 1300 367 700.

Simulation is a Great Teacher

Debra Nestel is Professor of Education at the Gippsland Medical School at Monash.

In an interview with her she told of the growing numbers of students who needed to be able to have clinical placements with willing clinicians in the Gippsland area. Most of these people are extremely busy already. To ask them to supervise the students in placements when they have had very little experience, is asking a lot.

"This is a challenge," she said. "Last year we had 65 students in their first year. This year we now have the new intake of 75 students."

This is a challenge anticipated in the planning of this school in a rural setting. Simulation is one solution to this need.

"Simulation is an ethical means of supporting the development of professional skills relevant for safe and competent clinical practice. It can be used creatively to prepare, supplement and enhance rural clinical placements." (1). At Gippsland Medical School, the

facilities include a simulation centre which incorporates a range of clinical environments such as reception, consulting rooms, a fully equipped ward and an emergency room.

Gippsland Medical School has been able to attract a "strong local community engagement" (2). with easy recruitment of simulated patients. This has been a wonderful advantage for the students. However simulation has the opportunity to provide even more medical experience by the setting up of scenarios which copy the sounds, sights, feels, and smells of real clinical settings, as well as having a 'patient' who exhibits the needed symptoms of various diseases or situations, and the feelings and reactions which the 'patient' may exhibit. It creates an authenticity where all the little things are included to make it as real as possible. Examples of these simulated situations include everyday occurrences through to emergencies.

Simulation does not replace clinical placement, but students who have

simulated experiences will benefit when in real clinical situations.

At present, as well as the simulation centre at Churchill, there is one opening at Bairnsdale under Associate Professor David Campbell. This particular centre will offer interprofessional training where medical, nursing and other health professional students can learn together. Other centres are planned throughout Gippsland creating a network of facilities to provide high quality training.

At Gippsland Medical School, training to be a simulated patient is offered, to ensure the volunteer's comfort and knowledge. Some people with a particular medical complaint may be useful in training simulated patients so that genuine authenticity can be reproduced.

The students will be seeking feedback from the simulated patients, and the patients themselves will need to be honest, but also sensitive so that the student's self-esteem is not lowered and that students are inspired to

Morwell RSL Sub Branch Inc.

**BISTRO
OPEN 7 DAYS
LUNCH & DINNER**



All functions catered for
Rooms Available for:
Meetings, Conferences, & Seminars

Entertainment for February

Friday 13th

Saturday 14th

Sunday 15th

Wednesday 18th

Friday 20th

Saturday 21st

Friday 27th

Saturday 28th

The Badgers

Hot Property

Old time dance featuring

Ken & Alice Rae

"Under the spotlight"

Featuring:

Solo

Misty

Blackhill Ramblers

Hound Dogs

H.B.T.

Telephone: 5134 2455



improve. The feedback sessions will include discussion on focusing on why things are going well and working, what went wrong and how this can be dealt with. Practice alone does not lead to competency. The student's attitude of wanting to improve and do better, with great coaching from staff and patients is critical.

Retired or unemployed actors have been used in other locations, but would also be welcome at Monash if they would like to apply.

Ref.1.2.[MJA Vol.190 No.2 Jan 2009]

Simulation Used with GIPSIE

Gippsland Improving Professional Standards Amongst International Experts (GIPSIE) is a program piloted by Gippsland Medical School beginning in October 2008. It uses simulation to help international doctors gain the competencies and experiences of Australian medical practices. These doctors are the medical backbone of Gippsland, indeed Victoria.

Churchill North Primary School

First Day Back

Children returned to school on Monday the 2nd of February. This year the school welcomes back 19 new Preps and 12 new students to the school.

Preps enjoyed their first day back at school with a tour of the school and meeting their grade 5/6 buddies who will look after them for the week.

The children began learning their first sound - A, with some apple print art, as well as learning news songs which they will sing to the elderly folks at Hazelwood House in Churchill later this term.

Children across the school were also treated to healthy banana muffins for morning tea.

A healthy morning tea will now become a regular feature, each Monday thanks to the dedicated Parents Club.

This is in addition to the fruit platter each grade receives weekly.

Looking Forward to 2009

The School looks forward to 2009 with a range of new and on going programs offered. These include:

✿ **Bright Sparks Program:** Offers extension to children who show talent across a range of areas. This years Bright Sparks includes Film Making, Literature, Mathematics, Science, Journalism and Information Technology.

✿ **Press Club:** The Press Club is currently in the process of having children apply and display their talents for the different positions available.

The club hopes to publish a monthly newsletter, as well as contribute to the Churchill and District News Articles and show a highlight reel at the end of each term.

✿ **Blue Earth:** This year all student from Prep to 6 will take part in a Physical Education program called 'Blue Earth'.

The program focuses on game skills which are designed to develop in the students a sense of awareness of themselves.

After each session children write or draw about how they felt or how their body felt in their journals.

The Blue Earth program helps children to be fit, focused, increases flexibility and teaches children new games.

The program also encourages children to improve core movement by performing simple poses.

✿ **After School Care:** Churchill North Primary will be running an interim after school care program, promoting active and healthy communities and lifestyles. Interim school care will be a structured program consisting of both inside and outside games, sports and craft activities suitable for students from prep to grade 6.

✿ **Swimming Programs:** The Swimming Program continues to run this year for all students Prep to 6. Students take part in a 6 week program that teaches vital water safety and swimming skills.

✿ **Values Program:** Churchill North encourages and promotes the importance of children displaying appropriate Values such as



respect, listening, courage, responsibility, cooperation, team work, patience, trust.

Values are taught each week in class and celebrated at assembly with the child demonstrating that value, receiving a certificate.

✿ **Kinesiology and PMP:** Children in Grade Prep 2 are offered the opportunity to take part in Kinesiology this helps improve fine motor skills, balance and co-ordination.



Blue Earth



Churchill Primary School

Welcome Back

A warm (that is an understatement) welcome back to the school community- children, parents and staff.

An extra big welcome is extended to the new staff, new families and a wonderful group of happily settled Preps, who seemed very glad to come to school.

Acting Principal Sue Gilmore said the school was looking forward to a great team effort, to ensure the school was off to a positive start to the year.

The school is very pleased to have the following new staff on board and looks forward to their contribution.

Sue Gilmore is Acting Principal, Matthew Dubois, Gerard Pearson and Paula Watts in

grades. Maria Bradford has been appointed as School Chaplain, and will be working for two days a week with the school community. Maria will be a great asset and will compliment the work of Jo Whitelaw and the rest of the Staff.

School Fete

Last year the Grade 1/2s with their teachers decided to raise enough money to build a well in an African country of their choice. This project is a Save the Children Fund project. The children made greetings cards for sale, and held discos. So far, of the \$3000 goal, \$600 has been raised.



Paula Watts

of helpers (staff and community members) who help prepare and clean up.

All enquiries should be to Jo Whitelaw at the school on 51221343.



Gerard Pearson

The whole school has now put their support behind this project and the school fete will be a huge fund raiser with lots of exciting activities. Half the money raised will be used by the school, the other half will go towards the well project.

The Fete will be held on 28th March from mid morning, at the school. The general public is kindly invited to come and buy, to support this wonderful project and the school funds.

Breakfast Program

This program is now under way. It is an excellent way for students to start the day by having a nutritious breakfast and some social interaction in the process.

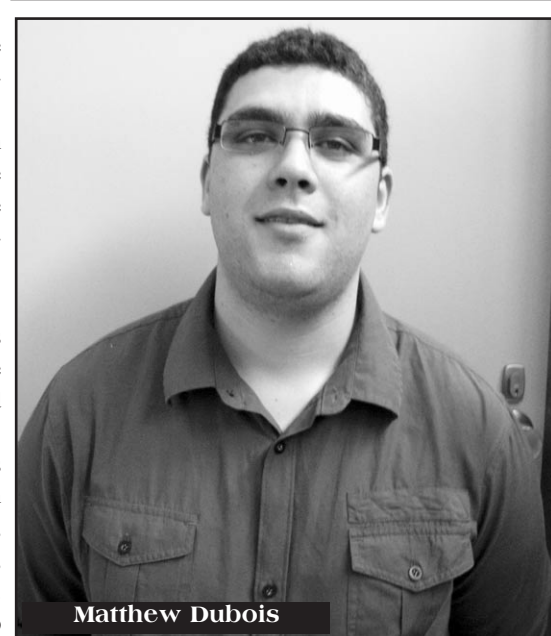
The program operates five mornings a week from 8am-8:30am. Students can come and enjoy a variety of cereals, toast with spreads, porridge, yoghurt, fruit and Milo, milk or juice to drink. All this is served by a wonderful group



Sue Gilmore



Maria Bradford



Matthew Dubois

Hazelwood North Primary School

Hazelwood North Primary School had its largest Year 6 cohort for many years in 2008.

They were taught by Mrs Karen Foster and Mrs Sue Duncan.

Damian Yates.
Morwell Newsagency Award - for academic excellence and mature attitude to work -
Jaye Anders.
We congratulate all the

award donors.
A particular mention should be made of Churchill Lions.
They also supported the school earlier in term 4 when the school had many windows broken.

At the other end of the school we are looking forward to the arrival of our largest Prep cohort for at least ten years - twenty six students.

We welcome our new teacher Miss Sarah Mills who will be taking Grade 12M.

We look forward to a great year and plan a Back to School Barbecue on February 11th and Parent Information Sessions later in February.



The award winners and their teachers: Mrs Susan Duncan and Mrs Karen Foster

They had many great learning experiences and all should be proud of their achievements in 2008.

above award winners and wish all our 2008 Year Sixes the best for their future.

The school appreciates the support shown by all of the

The following students received awards:

Citizenship Award presented by Russell Northe MP -

Hayden Stephens.

Kurnai College Award for Academic Excellence -

Meg Van Rooy.

Billington Family Leadership Award -

Cedar Martin.

Bill Brannan Award - Morwell RSL for positive attitude, excellent interpersonal skills -

Jade Howell.

Churchill Lions Leadership Award -

Brendan Wynne.

Churchill Lions Improvement Award - for sporting prowess -



The Lions Club Award Winners, Damian and Brendan with Tom Quinn and Geoff Brick and the Lions Rally Car.

Our 2009 Preps pictured at an orientation activity



Lumen Christi Primary School

Lumen Christi Graduation 2008

On Tuesday, 16th December, Lumen Christi's Grade 6 students had their farewell Graduation. Celebrations started with a Mass

that was wonderfully supported by our Lumen Christi choir. We then had the official presentation of certificates before we progressed to the social part of the evening. The children had been practising various dances, over the course of fourth term, under the expert tutelage of Pauline and Fred Bugeja. This required them to perform several dances and at their conclusion they

would then go and ask a parent to join them in the same dance. It was very interesting to see how many budding Fred Astaire or Ginger Rogers emerged. It was a fun and enjoyable evening for all. The night of celebration concluded with a PowerPoint of past Prep photos in comparison with their present photo, much to the amusement of the students and parent audience.

We wish our Class of 2008 all the very best as they start at Secondary school in 2009.

New Staff

We are very lucky this year to have 8 new staff members. We have two new teachers Emma Harris who is now the Grade 2 teacher and Kate Mitchell who is one of the 3/4 teachers. We have four new teachers aides Sharyn Giles, Jakson Elfring, Rowena Hall and Vicki Hornstra. Bianca Stuckey and Katie Hallett are also joining the staff this year as interns from Monash University. We are looking forward to another great year at Lumen Christi.



Sudoku

Sudoku - a number puzzle game!! You will use logic to solve the puzzle. There is NO mathematics involved. The puzzle consists of 9 x 9 num-

bers in a square grid made up of smaller 3 x 3 square grids. Each row and column must contain just one of each number.

			9					5
5	6	9					3	1
	8		3	4				2
9	3			5	7			6
		4		2		5		
6			4	8				9
	7			9	1			8
	9	8					2	6
	2				8			

NUMBER LADDER

Can you climb the ladder and find the missing numbers

?
12
?
10
40
8
24
6
12
4

Hi Kids,

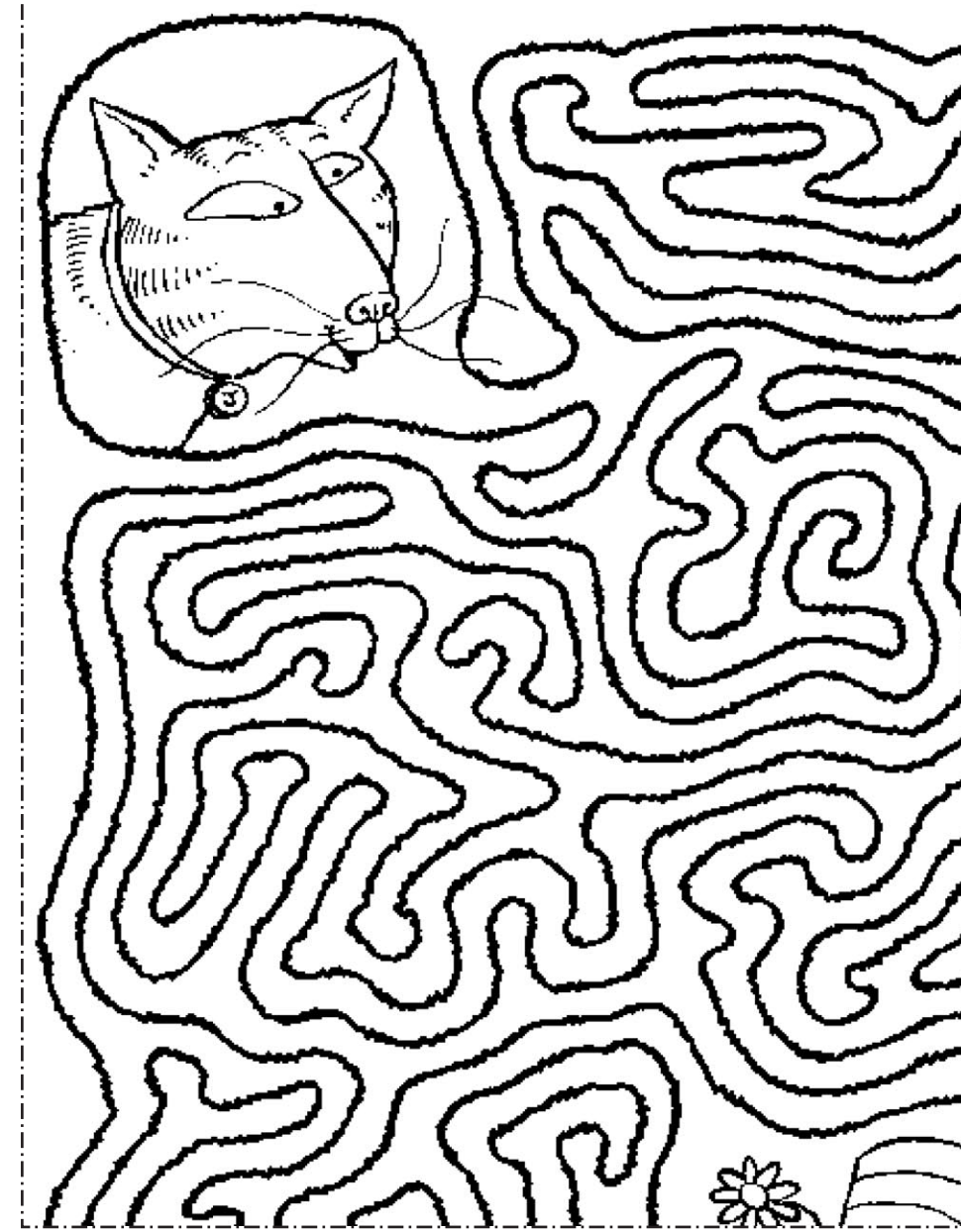
This month we have a dot-to-dot. You will be able to colour in the picture after you have finished the dot-

to-dot.

Also we have a maze for you. Please help Jasper find his hat!!



Jasper has lost his hat can you help him find it



C
H
I
L
D
R
E
N
S
C
O
R
N
E
R

CHURCHILL JUNIOR FOOTBALL CLUB

Registration Days will be held at Gaskin Park on

Friday 27th February 5pm - 7pm

Saturday 28th February 10am - 12noon



For all players who register on the above registration days their names will be entered into our early bird raffle to win a great prize.

All NEW players who register and pay on the above registration days will receive a FREE pair of Cougar shorts.

Any queries contact:

Cheryl on 040 009 6754

Nadine on 043 101 8008

We hope to see you there

New Churchill Motors

Specialising in all general repairs and servicing of 4WD and passenger vehicles including:-

- *Brake and Clutch replacement and brake machining
- *Steering and suspension
- *Gas and petrol tuning



NEW CHURCHILL MOTORS
 Lot 8 Phillip pde CHURCHILL 3842
 Phone: (03) 5122 1380
 Fax: (03) 5122 3586
STEVEN ABBEY

- *Cylinder head and Flywheel machining
- *Log book servicing and general repairs

STRUT RE-GAS

Tel: (03) 5166 1665 Mob: 0407 542 122

"The Strut Specialist"



- New Struts available including Stainless Steel
- Automotive applications: cars, 4wd, trucks, buses & tractors.
- Office/Medical Equipment: chairs, photocopiers etc.
- Boats, Trailers & Industrial uses.

Struts are not throw away items. They can be RE-GASED!

Churchill and District News & Churchill Tennis Club

Junior Round Robin Tennis Tournament

Monday 6th April.

Age groups from Under 10 to Under 18, beginners and competition players catered for, racquets supplied
Lots of Matches Lots of Fun

Central Gippsland Mowers



HONDA **Husqvarna** **TORO**



Fast, Easy Finance

Factory Trained Service Technicians





Service Pick-Up Available


SALE

Husqvarna

Ride On Mowers



with FREE Trailer



SALE

Chippers/ Shredders



Great Prices!

SALE

Mowers



Large range including Honda Mowers

Central Gippsland Mowers & Chainsaws

533 Princes Drive, Morwell. Telephone 03 5134 8899

Churchill United Soccer Club Celebrating Forty year 1969 - 2009

The township of Churchill as we know it today was in its infancy in 1969 when the Churchill United Soccer Club was founded.

Initial discussions and club meetings were shared between the kitchen tables and lounge rooms of founding members, Tom Sands (SNR) and the club's first president, Rod Stewart as they pushed forward to form senior and reserve fledgling teams to compete in the Latrobe Valley Soccer League in 1970. They were joined as co-founders by Bill Canby, Joe Young, Barry Jackson, Günter Binder and Ken Penfold.

Churchill had various home grounds before landing at Hazelwood South Reserve on Tramway Road in the late 1970's after the Hazelwood (now Churchill) Football Club moved to its new home at Gaskin Park. Temporary bases during the 1970's included a makeshift pitch on vacant land at the corner of Acacia Way and Monash Way, then use of a block on Switchback Road at the intersection of Firmin Road, and a clearing on Manning Drive where the current hockey field is situated (pictured).

The clubs nickname, the *Rams*, didn't come into wide use until the mid 1990's after the club accepted the moniker from legendary LVSL Secretary and soccer scribe Dick

Bosma. It's thought Bosma tagged Churchill the Rams after the Jeeralang Rams which folded in 1982, the club playing three seasons in the second and third divisions of the LVSL. Interestingly there was another Churchill and district team, the Hazelwood Cobras, which also competed in the lower grades between 1978 and 1980.

In 1980 Churchill went close to snatching its first senior League Championship when it missed out by a point to Sale City and Traralgon City respectively who were separated by goal difference at season's end. Needing a win on the final day to overhaul Sale City, Churchill could only manage a draw with rivals Fortuna 2-2 in a year when the Morwell club finished second from the bottom.

Churchill has remained in the first division since its inception and has always been noted for its commitment to junior development, but in 1990 the club hit its lowest point when it finished bottom and was forced to play a relegation match against undefeated second division Champions Morwell Rangers/ Loy Yang Condors United.

Effectively fighting for its survival Churchill blazed away to win 8-0 in the first leg of the decider with the Combine understandably conceding the second leg with such a deficit to



Churchill Soccer Club Plays at Manning Drive

overhaul. From here it was onwards and upwards for the club as they set about building from the ground up with a renewed drive and emphasis on junior programs.

Pushing into the top four in 1991 for the first time since 1985 the club continued its climb by collecting its first senior silverware with the Charity Bowl in 1994 and also finishing runners up to Traralgon Olympians for the League Championship the same year. Churchill was also runner up in the 1993 Battle of Britain Cup after losing to Morwell Falcons 2-0 in the final.

In 1998 Churchill cracked it for major success when it won the Battle of Britain Cup for the first time and also finished runner up League Champions after losing an epic 4-3 decider to Warragul United when the Championship was contested in a finals series.

The club craved the League Championship but would try and finish bridesmaid again in 2005 and 2006 to Fortuna, with a single

point deciding the winner in 2006.

Finally in 2007 Churchill broke through after 38 years of trying. Quite fittingly the feat was achieved with players predominantly developed at the club and adding to the milestone the team went through undefeated with an average winning margin of 5.7 goals.

Since 2005 Churchill have collected ten senior trophies with a record equaling three Battle of Britain Cup titles in a row 2005, 2006 & 2007; the now defunct Premiership in 2005; the Charity Bowl in 2007 and 2008; and the aforementioned League Championship in 2007 and again in 2008.

Off the field the crowning moment for the club occurred in February 2008 when new social rooms and undercover spectator viewing area were officially opened after six years of fund raising and volunteer labor. Adding to the investment in infrastructure the club installed an automated ground irrigation system during 2008 to improve the quality of the playing sur-

face for all users.

Current club President Stephen Breheny reflected on the forty year milestone, "From humble beginnings we have built this club to have the highest participation rate of any soccer club in Gippsland with 231 registered players in 2008. That is remarkable given the relatively small population catchment we have to draw upon". Breheny said.

Breheny is calling on previous administrators, players and supporters to search their records for any old photos, pennants and memorabilia for the club to scan and archive.

"In this our fortieth year we have the opportunity to compile our history from the early days, if we don't do it now we may lose the link as time roles on". Breheny said.

The club will be holding a players reunion and separate celebratory Ball to mark the milestone on dates to be fixed. To keep updated on event timing or to register your interest please visit the club website <http://cusc.com.au>



Churchill Soccer Club Today

Soccer Club Fundraiser for Emergency Relief Fund

The Churchill Soccer Club hit the ground running after the Boolarra fires. In less than six days a huge fundraiser was organised.

A dedicated band of volunteers hit the foot paths and worked the phones to collect numerous raffle prizes and items for auction from all over Gippsland. Live entertainment from The Gippsland Country Connection, The Celtic Rhythm and The Zarsoff Brothers, catering from the Churchill Lions and a jumping castle

added to the event.

\$\$\$ was raised for the Gippsland Emergency Relief Fund - Well done to the organisers and thanks those who donated prizes and auction items and to the huge crowd that came along and dug deep into their pockets.

The Gippsland Emergency Relief Fund is a registered charitable organization making all donations tax deductible. All donations are returned to the community and no costs are deducted.

The Fund provides relief and assistance to persons residing in the Gippsland Municipalities of Bass Coast, South Gippsland, Latrobe, Baw Baw, Wellington and East Gippsland who suffer injury, loss or damage from natural disasters.

Donations can be made at any branch of the:

National Australia Bank
BSB: 083 932
Account Number 04829 9080
or via post to:
Gippsland Emergency Relief Fund
PO Box 508
Traralgon Vic 3844
Australia





The number of deaths and homes lost is continuing to climb after Victoria's worst ever bush fires.



Delburn Fire which burnt 6385 hectares and claimed 30 houses, 87 sheds and 10 cars on January 29 2009





Bush Fire at Boolarra, Yinnar & surrounding districts that started on 29th January 2009

*Meanwhile the CFA had abandoned the breached fire control lines and reverted to asset protection; saving as many houses as they could.... Then we counted the cost... blackened smoldering bush. Broken shattered dreams....
Colin Brick*



After the fires