

# CHURCHILL & DISTRICT NEWS

Established 1966

cdnews.com.au



Distributed Free

Rotary Youth Programs - p 2



Tennis Come 'n' Try - p 10



Nappy Collection - p 12



Bowls works continue - p 23



## Face Painting attracts attention to dairy farmer's plight



The Dairy Farmers' Relief Centres of Gippsland organisers had a promotional stall at the June Lions Club Market. Deb Levi, one of the local area organisers does face painting, and she lent her talents to paint faces like Friesian cows to arouse people's interest in the dire needs of our dairy farmers, again hit with lessened milk prices.

Yarram coordinator David Tilley and his partner Kerry brought their three week old calf Sir Lancelot and their three year old daughter Renae. Sir Lancelot was a big hit with all the locals. David and Renae had their faces

painted as a Friesian cow, as well as everyone else. Liam Ferguson is five and was an integral part of the Farmers relief drive handing out flyers to passers-by.

Many farmers are finding it hard to make ends meet and having food on the table and other essential items has become an issue.

If you would like to help our dairy farmers you can drop off goods at Boolarra Primary School, and both Woolworths Churchill and Morwell stores have an in-store donations trolley for non-perishables.

Goods which are useful are:

General non-perishable

grocery items, Personal care products, Vouchers - prepaid visa cards etc., Toiletries, Baby goods, Animal food.

For more information you may ring Deb on 0407 896 172 or Melissa on 0408 334 397.

Deb would like to acknowledge the Lions Club for allowing them to have a stall to promote the cause.

**Captions**  
Left: David Tilley and Deb Levi with the calf Sir Lancelot drawing attention to the plight of our dairy farmers.  
Above: Kelsie Watkinson with her face painted as a Friesian cow with Sir Lancelot who was a great hit with Lions Market visitors.

### CENTRAL GIPPSLAND MOWERS & CHAINSAWS PTY LTD

*Pick-up and Delivery  
to most areas at reduced prices*

533 Princes Drive Morwell Vic 3840 Tel: (03) 5134 8899  
morwell@gippslandmowers.com.au

### DAINBRIDGE NICHOLSON FINANCIAL SERVICES

George Nicholson, B.Com, CA  
Phone 5175 0001

**Tax** (\*Individuals \*Companies \*Trusts \*Primary Producers)

❖ Investments ❖ Superannuation

❖ Bookkeeping and BAS services

9 Church Street, Traralgon

Email: kim.dainbridge@bigpond.com

**CHURCHILL & DISTRICT NEWS**

*"Connecting Your Community"*  
Established 1966

Churchill and District News is a community newspaper staffed by volunteers.

**The Team**

- Team Leader/Secretary: Ruth Place
- Minutes Secretary: Barbara Cheetham
- Treasurer: Ruth Courtis
- Assistant Treasurer: Delma Hodges
- Editor: Carol Scott
- Advertising: Ruth Place,
- Layout: Allan Larkin
- Production: Tracey Burr, Carol Scott, Ruth Place, Allan Larkin
- Proof Readers: Ruth Place, Barbara Cheetham, Geraldine Larkin, Carol Scott
- Team Members: Delma Hodges, Charlie Rawlinson, Barbara Cheetham, Sam Gillett

Webpage: [www.cdnews.com.au](http://www.cdnews.com.au)

Facebook page: Glenys Horsey



**Churchill and District News**

**Contributions**

**The deadline for the submission of articles and advertisements for the August 2016 edition is July 25, 2016**

**EDITORIAL**

Articles for publication and Letters to the Editor can be sent to:

Churchill & District News  
PO Box 234, Churchill, 3842

Or Email: [cdneditorial@aussiebb.com.au](mailto:cdneditorial@aussiebb.com.au)

All articles must be submitted by the 25th of each month for publication in the next issue.



Articles can be left in our Drop Off Boxes Located at:  
Churchill Post Office, Co-Operating Church, Williams Avenue and The Churchill Hub

**ADVERTISING**

Advertising enquiries can be addressed to:

Ruth Place or Allan Larkin  
Churchill & District News

PO Box 234, Churchill, 3842 or email:

[cdnadvertising@aussiebb.com.au](mailto:cdnadvertising@aussiebb.com.au)

Telephone: Ruth 03 5122 1961  
Allan 0427 372 517

**Disclaimer**

The Churchill & District News wishes to advise that the views or remarks expressed in this publication are not necessarily the views of the Editor or the Management Team and no endorsement of service is implied by the listing of advertisers, sponsors or contributors.

CHURCHILL & DISTRICT NEWS IS PRODUCED UNDER THE DIRECTION AND CONTROL OF THE CO-OPERATING CHURCHES OF CHURCHILL. THE CO-OPERATION IS MADE UP OF THE ANGLICAN, UNITING AND CHURCHES OF CHRIST.

We acknowledge the support of



**Rotary Club sponsors youth programs**

By Leo Billington  
Rotary clubs sponsor a range of youth related programs, some of which are ideal for students completing year levels 10, 11 and 12. One of these is the Model United Nations Assembly (MUNA) program. Each year, during May, Hazelwood Rotary has sponsored students enabling them to attend a MUNA function held at a school camp north of Warragul.

This year, two Year 11 students, Madison Brooks and Georgina Anton from Mirboo North Secondary College, were sponsored by Hazelwood Rotary. From all reports, both students had a great time, enjoying a unique opportunity to meet many other students from eastern Victoria.

**Rotary Facts**

On May 31, 2016, Rotary announced US\$35 million in additional funds to end polio worldwide.

Fifteen years ago, malaria killed a child every 30 seconds. Under Rotary's Millennium Development Goals, however, considerable progress has been made in preventing, diagnosing and treating malaria. As a result, deaths have fallen by 60 percent. Now, under the ambitious Rotary Sustainable Development Goals, Rotary aims to reduce malaria cases and deaths by a further 90 percent by 2030.

**Guest speaker**

Kumari Middleton was our guest speaker early in June. Born in Sri Lanka and



adopted by an Australian family as an infant, Kumari understands how important it is to feel welcome and valued. Her original career path was professional dance having studied full-time in Melbourne and New York.

However, after contracting legionnaires disease, which restricted her ability, Kumari co-founded Mayibuye a community arts organisation of which she is CEO.

In 2015, Mayibuye merged with Cultural Infusion, where Kumari moved into the role of Global Community and Youth Manager.

Kumari recently moved in the role of Youth Settlement Worker at Spectrum Migrant Resource Centre and continues at Cultural Infusion part-time to manage the launch of a new social

enterprise called "Care Two Dance". Kumari is a member of the Gippsland Multicultural Services Committee and the Richmond Union Bowling Club Committee. She has previously held board positions at Women with Disabilities Victoria and Young Social Pioneers (FYA). Kumari also coordinated Mayibuye's Certificate III in Community Dance at Melbourne Polytechnic, was Artistic Director for "Multicoloured Journeys" a Gippsland Production and completed two years working for Melbourne City Mission living as a Lead Tennant with teenagers transitioning from care.

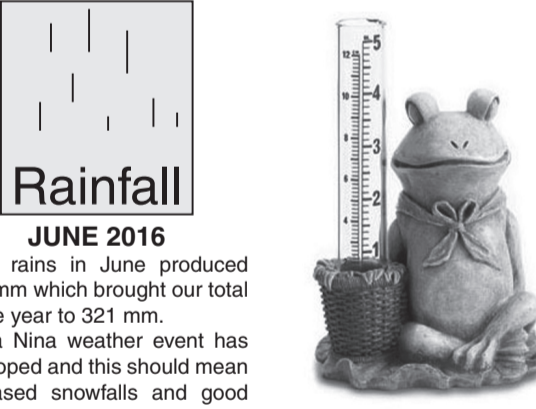
As a young leader, Kumari has been selected for Young Social Pioneers, IYF Global Fellows (Brazil), School of

Social Entrepreneurs, Cordes Fellowship (Mexico), Social Trader's The Crunch and the Asialink Leaders Program. Kumari recently received a Victorian Multicultural Award of Excellence, was named in JCI's Top Outstanding Young People of Australia and was finalist for both Young Australian of the Year and the Pride of Australia Medal.

Hazelwood Rotary cordially invites members of the community to consider joining.

As is always evident in each monthly edition of the Churchill & District News, there are plenty of activities in which the Rotary club is involved.

For further information, please contact club President, Leo Billington on 0458 661 848.



**Rainfall**  
**JUNE 2016**

Good rains in June produced 89.5 mm which brought our total for the year to 321 mm.  
A La Nina weather event has developed and this should mean increased snowfalls and good rains.

LIC 47339

**CHENEY PLUMBING**  
PLUMBING & GASFITTING

**GENERAL PLUMBING - ROOFING & GUTTERING**  
**GENERAL GAS FITTING - DRAINAGE & SEWERAGE**  
**BLOCKED DRAINS - NEW HOMES & EXTENSIONS**  
**REPAIRS & MAINTENANCE - HOT WATER SYSTEMS**  
**SPLIT SYSTEM AIR CONDITIONING**

**CHURCHILL & SURROUNDING AREAS**  
**0400 196 722**  
**INDUSTRIAL - DOMESTIC - COMMERCIAL**

## ADVERTISING RATES

Effective January 1, 2016

No.	Size	B/W	COLOUR	10% Discount		
				B/W	COLOUR	
	Height x Width	Column size	\$	\$	\$	\$
1.	60mm x 85mm	2 x 6 cm	29.00	NA	25.00	NA
2.	125mm x 85mm	2 x 12.5 cm	58.75	94.00	53.00	84.60
3.	95mm x 129mm	3 x 9.5 cm	67.00	107.00	60.30	96.50
4.	60mm x 262mm	6 x 6 cm	84.60	136.00	76.15	121.80
5.	140mm x 129mm	3 x 14 cm	98.70	158.00	88.85	142.10
6.	190mm x 129mm	3 x 19 cm	133.95	215.00	120.55	192.85
7.	190mm x 262mm	6 x 19 cm	268.00	375.00	241.25	337.75
8.	380mm x 262mm	6 x 38 cm	375.00	600.00	337.50	540.00

**TO BOOK YOUR ADVERTISEMENT**  
PLEASE CONTACT  
**RUTH PLACE**  
03 5122 1961 or 0456 786 577

Submission of Articles:  
Articles can be Emailed to: [cdneditorial@aussiebb.com.au](mailto:cdneditorial@aussiebb.com.au) - Mailed to: PO Box 234, Churchill, 3842  
OR put in one of our collection boxes at: Churchill Post Office and at the Co-Operating Churches.  
Advertising enquiries can be emailed to: [cdnadvertising@aussiebb.com.au](mailto:cdnadvertising@aussiebb.com.au)

# Cooking with Noelene



By Noelene Marchwicki  
**Fish And Chips**  
 Peel and slice a sweet potato and steam with chopped coriander and sliced fresh garlic until the sweet potato is tender. Add a 1/2 cup of roasted cashews to the steamed vegetables and process till the cashews are granulated. Set aside.

Place 2 salmon fillets on a baking tray skin side up, drizzle them with Greek salad dressing and bake in a preheated oven on 200 deg C for 12 minutes, until the skin becomes crispy and starts to curl at the edges. Now that the salmon is cooked smear the sweet potato and cashew pesto over the salmon fillet, sprinkle with parmesan cheese. Serve with oven baked chips and a leafy salad mix.

## Vegetarian Lasagne

Spray your casserole dish and set aside. Slice an eggplant (length ways) and layer the base of the dish with eggplant slices. Season with dried Italian herbs and a sprinkle of nigella seeds. Slice up a zucchini, place

a layer of zucchini over the eggplant.

Place balls of cherry bocconini cheese and level out this layer with the addition of sliced mushrooms.

Season with fresh coriander.

At this stage crack six eggs over the mushrooms.

Repeat the layering with the egg plant, zucchini and mushrooms, seasoning with

the Italian herbs and nigella seeds.

Finally top with grated cheese and a little cracked pepper and nigella seeds.

Bake in a moderate oven that has been preheated to 160 deg C for 40 minutes.

This vegetarian lasagne is low in carbs, gluten free and can be enjoyed by those people who follow a paleo lifestyle.



# Churchill Community Garden

## Wood ash in the garden

Wood ash from wood burnt from twiggy material is a valuable source of quick acting potassium. Potassium helps plants produce more blooms and establish a stronger root system.

Please note that wood ash can change the soil chemistry, making it less acidic. This is fine for vegetables like spinach, peas, onions, lettuces, asparagus, broad beans, broccoli, cauliflowers, cabbages, brussels sprouts

and ornamentals like lilacs and peonies, but not good for azaleas, rhododendrons, camellias and Japanese irises.

Sprinkle it around lime loving vegetables and hose off any ash that falls on the leaves immediately.

The ash and bits will act as a deterrent against snails and slugs. Make a circle around lime loving plants and the snails won't cross it.

Information sourced from Gardening Australia magazine (June 2006)

Written by Sheina Renton from the Churchill Community Garden which is situated behind the Churchill Community Hub in Phillip Parade, Churchill.

Our garden group meets at the Hub every Monday at 10am when we spend time in the garden after a brief meeting. Feel free to join us or leave your contact details at the Churchill Neighbourhood Centre in Phillip Parade, Churchill by calling in or ringing 5122 2955.

# Cafe open seven days a week

The Yinnar Café, situated in Main Street, is under the management of Janine Dee and her assistant Brooke, creating a friendly, winter warm, helpful style of country hospitality, with over the counter or table service seven days a week.

Being open Saturdays and Sundays as well as week days, gives the locals and tourists a place where they can choose from a wide range of food to take away or sit in.

The menu includes sandwiches, rolls, foccacias,

chips, hamburgers, steak sandwiches, with fresh daily locally made pies, pasties and sausage rolls.

There is a well stocked fridge of drinks, plus coffee, tea and milk shakes to choose from to whet your whistle.

Slushies are back on the menu in summer. There are also ice-creams and confectionary.

Fresh bread and milk is available daily; being the only place in town to provide that service.

Janine will happily stock

requested items for locals.

Open Monday to Thursday from 7am-5.30pm; Friday 7am - 8pm;

Saturday and Sunday 8am-5.30pm. The café times can cater for all.

Janine invites town visitors to stop and view 'arc' activities and the railway museum, then pop across the road to experience some friendly atmosphere at the café, where you can also see and buy a variety of unusual giftware items as a memento of your visit to Yinnar.

# The wild animals of Africa

When I sat to write this article, I didn't know how to describe the magnificence of seeing wild animals in their natural surrounds.

The amazement that you feel when you are five metres from a pride of lions feasting on their latest catch, or stopping in your vehicle to let a herd of elephants cross the road in front of you or watching the majestic giraffe bending to drink from a water hole outside

your tented camp is really indescribable. Add zebras, cheetah, hyena, wild dog, white rhino, black rhino, wart hogs to the viewing and you really feel you have been to Africa.

At helloworld Morwell we pride ourselves on our first-hand knowledge of many places around the world.

We'd be happy to make your travel dreams come true. Irene O'Donnell, owner of helloworld Morwell.



- Flights
- Ski
- Day Tours
- Package Holidays
- Accommodation
- Foreign Exchange
- Specialist Holidays
- Car Hire
- Group and Business Travel
- Cruise
- Gift Vouchers
- Travel Insurance

**helloworld Morwell**

213 Commercial Road, Morwell, VIC 3840

(03) 5134 3388 morwell@helloworld.com.au



## CO-OPERATING CHURCHES IN CHURCHILL Indian Buffet Fundraising Dinner

Limited numbers  
 so book in quickly

### Authentic Indian Cuisine

3 course meal and more

Menu for the day consists of a selection of entrees, flatbreads, rice, curries, desserts and drinks from different parts of India.

There will be plenty of vegetarian dishes as well.

So come along and enjoy a pleasant evening.

**\$30** per person

**Saturday, September 10, 2016**

5.30 pm at the Co-Operating Churches, Williams Ave, Churchill

Enjoy the delicious flavours of genuine Indian cooking

(Dietary considerations - Gluten Free, etc.)

To secure a place, contact -

Ruth Courtis on 0470 090 512 or ruthcourtis@gmail.com

Ruth Place - 5122 1961 or Brenda - 0439 610 206

## Looking Back

...through the eyes of locals residents

CHURCHILL & DISTRICT NEWS

"Connecting Your Community"

An Oral History of  
 Churchill & District

Copies available at  
**\$15** each

Contact - Ruth - Ph: 03 5122 1961

Caring Family Medicine

## New Patients Welcome

You can now book your appointment online  
 or via our very own "MAACG" app  
[www.hazelwoodhealth.com.au](http://www.hazelwoodhealth.com.au)  
 or call

# 5 1 2 2 2 5 5 5

Open Monday to Saturday  
 Evening Clinic Wednesday

## Bulk Billing

To all Medicare Card Holders

9a Georgina Place, Churchill

Medical & Aged Care Group



Russell Northe, MP

**VicHealth's Active Club**

Sporting and recreation clubs across the Morwell electorate have received a share in almost \$1 million in

the latest round of VicHealth's Active Club Grants, to help get Victorians more physically active.

The grants, of up to \$10,000 each, will make a significant difference to the local clubs in our community.

These clubs are often reliant on the hard work and dedication of volunteers and its therefore pleasing to see the diversity of successful applicants under this round of funding.

Successful applicants

can now put this money towards essential equipment and safety gear in a bid to encourage participation in physical activity.

The following 11 clubs will share in almost \$1 million worth of VicHealth Active Club Grants:

1st Churchill Scout Group \$1,500 - Tents and men's uniforms

Morwell Junior Football Club Inc - \$2,625 - Football competition jerseys

Tyers Soccer Club Inc

\$3,000 - Playing strips, junior and senior

Churchill United Soccer Club \$2,393 - Team playing shirts

Traralgon and District Pony Club Inc \$3,000 - Show jump wings

Yallourn Golf Club Inc \$2,968 - Beginners golf clubs

Pax Hill Tennis Club \$2,767 Tennis nets, balls and shirts

1st Newborough Scout Group \$2,453 - Hiking tents and handheld GPS

Churchill Tennis Club \$1,989 - Tennis uniforms, balls, nets and racquets

Latrobe Valley Yacht Club \$1,344 - Level 50 PFD and inflatable PFD

Gippsland Athletics Incorporated \$870 - High jump uprights, measuring sticks and crossbars

For more information about VicHealth's Active Clubs Grants, go to [www.vichealth.vic.gov.au/activeclub](http://www.vichealth.vic.gov.au/activeclub)

In closing the 1st



Churchill Scout Group will be turning 50 this year with birthday celebrations taking place on Saturday October 1. For more information you can contact the Group Leader directly at [gl.churchill@scoutsvic.asn.au](mailto:gl.churchill@scoutsvic.asn.au)

**Proposed Changes to Council's Community Amenity Local Law No.2**

Following community feedback Council has "taken on board" community feedback about its proposed Community Amenity Local Law No.2, and now has a modified version of the proposed Local Law.

This version of the proposed Community Amenity Local Law No.2 is intended to supersede the Council's current Local Law No.2 which has been existing since 2009.

Council is very grateful for the extensive community

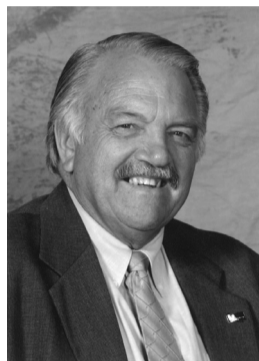
feedback received and for the many submissions made objecting to parts of the new proposed law. As a result, Council has changed the wording in the document to better reflect the community's views.

Council has responded to issues around the use of council parks, gardens and recreational reserves by the general public.

A clause that restricted use of recreational vehicles on private properties has been completely removed.

Changes to the wording of a clause about dilapidated buildings will strengthen

**Darrell White**



Cr Darrell White

penalties for unsightly and unsafe commercial and industrial buildings, recognising the negative impact these ugly buildings have on the community.

The purposes of this Local Law include to

prohibit, regulate and control activities, events, practices or behaviour on Council land, public places and private property, and to protect Council's assets and regulate their use.

The modified version of Proposed Community Amenity Local Law No.2 2016 is open for submissions until Thursday July 28, 2016. Community comment and feedback is encouraged. Submissions can be made in a number of ways, either online, in person, by email to [latrobe@latrobe.vic.gov.au](mailto:latrobe@latrobe.vic.gov.au) or by mail.

To view the draft

document and make a submission, attend one of Council's Service Centres', or call 1300 367 700, or visit [www.latrobe.vic.gov.au/locallaw2](http://www.latrobe.vic.gov.au/locallaw2).

A public meeting is scheduled for today, Thursday, 21 July at 6pm in the Nambur Wariga Meeting Room, Latrobe City Council Headquarters, 141 Commercial Road, Morwell for interested community

members who would like to discuss their concerns with Council staff.

Following the conclusion of the community consultation period, submissions will be considered at the Ordinary Council Meeting on Monday August 22, commencing at 6.00 pm in the Nambur Wariga Meeting Room.



Term 3 2016, 11 July - 16 September



**Churchill Neighbourhood Centre**



**Churchill Neighbourhood Centre**

**Term 3 2016 classes & activities**

**Health, Wellbeing & Creativity**

**Community Café**

All community members welcome to come along, share a meal and meet new people.

**Mondays 12.30pm - 1.30pm** Gold coin donation

**Knitting & Crochet**

Share & learn skills, swap ideas, get help & inspiration, share stories, bring your UFOs. Work on your own projects or knit for a cause.

**Wednesdays 10am - 12.30pm** \$6 per session

**Positive Birth Movement Latrobe Valley**

Are you pregnant? Feeling nervous, overwhelmed, isolated? Tired of hearing negatives comments & bad stories about pregnancy and labour? Would you like feel positive, supported, empowered & respected in your own journey and choices? You are welcome to join the only antenatal conversation group in your local community!

**July 25, August 29, September 26, October 24, 10.30am - 12pm**

**Patchwork**

Learn patchwork, material choice, techniques and design. Learn new skills as well as share tips and tricks.

**Wednesdays 6.30pm - 9pm, Thursdays 10am - 12pm or 1pm - 3pm**

\$110 for 10 weeks or \$90 concession  
Casual \$12 or \$10 concession

**Photography Workshop A**

Learn to take better photos, framing & composition and how to use light as well as how to use all those buttons on your camera. Suitable for digital SLR & point & shoot cameras as well as smart phones.

**Saturday 20th August 9.30 - 12.30**

\$30 or \$25 concession

**Photography Workshop B**

Learn about shutter priority, aperture priority, manual exposures, depth of field. Following on from photography workshop A this covers the more technical side of photography.

**Saturday 3rd September 9.30 - 12.30**

\$30 or \$25 concession

**Country Kitchen Cooking**

Learn basic principles of cooking country style using fresh produce. For beginners and the more advanced cooks. Contact us for weekly menus.

**Tuesdays & Wednesdays 10am-12pm**

\$140 for 10 weeks or \$110 concession  
Casual \$15 or \$12 concession

**Visit [www.churchill.org.au](http://www.churchill.org.au) for our full program and find us on Facebook: [www.facebook.com/ChurchillNeighbourhoodCentre](http://www.facebook.com/ChurchillNeighbourhoodCentre)**

**Computer Courses**

In most classes you can bring your own laptop or ipad/tablet, check with us first.

**Intel® Easy Steps Basic Computer Skills**



If you've never used a computer, or are unsure about the online world, the idea can be daunting. But it doesn't have to be. Intel® Learn Easy Steps is designed to give you the help you need.

**Tuesdays 9.30am - 12.30pm** \$90 for 10 weeks \$70 concession Casual \$10 or \$8 concession

**Intermediate Computers**



Learn to use Microsoft Office 2010 programs: Word, Excel, Publisher, Access, Power Point, Outlook, Windows 8 and QuickBooks. Internet, email, iPads & tablets can also be covered. For students with basic computer skills.

**Tuesdays 1pm - 3pm, Wednesdays and Fridays 10am - 12pm**

\$70 for 10 weeks \$60 concession  
Casual \$8 or \$7 concession

**Photo Editing & Digital Scrapbooking**

Using ACDSee photo editor learn how to edit and enhance photos. Create calendars, photo books, greeting cards, and photo DVDs.

**Mondays 9.30am - 12.30pm** \$90 for 10 weeks \$70 concession

**Located at the Churchill Community Hub, 9 - 11 Philip Parade, Churchill**

**Churchill Neighbourhood Centre acknowledges the support of the Victorian Government and Latrobe City Council.**



## Mathison Park gains grant

We are thrilled to announce that we have been successful in obtaining a grant through 'Lovegippsland' Stronger Community Program (SCP) – a Federal Government initiative which will enable us to remove unsuitable trees around the play equipment area and to install shade cloths over the play equipment, thus providing a sunsmart play area at the park.

We extend our grateful thanks to Darren Chester and the Federal Government for the granting of the means for this valuable improvement to the park.

Darren Chester visited the park to meet some of the committee members and to share a photo shoot with the members and some happy children from Churchill Primary School.

The working bee time was used to plant new trees and shrubs. Over 150 items were planted by the six dedicated volunteers.

It was good to have a break and a hot cuppa during the cold morning, which proved to be better weather than anticipated.



## Matt's major award

### Churchill's own travel agent takes out major award at National Conference

Matt Schmitz is celebrating after being presented with the prestigious Customer Service Award from leading travel company, Travel Counsellors for 2016.

Matt was awarded the accolade by Travel Counsellors Managing Director David Hughes, at an awards ceremony at the company's conference. Held in the Gold Coast's luxurious Palazzo Versace Hotel, the annual awards ceremony saw the company acknowledge its top performing business owners and give them the recognition they deserve.

Matt was thrilled to take home the coveted award in recognition of his outstanding Customer Service. "I was so excited to win the Customer Service Award 2016, and be rewarded for how well I've run my business in the past year. My clients know how hard I work to deliver a premium service and without them it would have been impossible to win this award. So, many thanks to all of them for their support and I look forward to continuing to make their travel dreams come true



as I grow my business in the years to come."

This prestigious accolade is given to the Travel Counsellor who receives the most perfect scores from their customers. This survey is sent out by Travel Counsellors franchise office in Melbourne, to all customers that book through Matt. This particular award is celebrated by over 1500 Travel Counsellors around the world which is a true reflection of customer service excellence. Matt's numbers of perfect 10's were staggering with the highest ever recorded company wide.

Matt Schmitz adds: "I choose to work with Travel Counsellors because the company has a customer-centric approach. We value our customers and work

towards building lasting relationships with our clients, instead of just seeing them as a number. Winning this award shows that our personal approach to selling travel is definitely the way forward."

At the conference Matt was also able to meet with suppliers who exhibited at a special 'pow-wow' session. He was able to speak with representatives from a range of tourist boards, hotels, wholesalers, airlines and cruise lines to get the low down on all the latest travel trends and up-to-date information to pass on to his customers.

The conference was attended by Travel Counsellors' agents from all over Australia, guests from the Travel Counsellors management team, sponsors and partners, including headline sponsor Travelpart, as well as courageous guest speaker, London bombing survivor, author and founder of not-for-profit M.A.D for Peace, Dr Gill Hicks.

Customers interested in speaking to Matt Schmitz about their future travel plans can contact him on 5122 1108 or by emailing matt.schmitz@travelcounsellors.com.au

Councillor Rossiter said a range of unwanted items, including scrap metal, white goods and televisions, can be left free of charge at any of Council's four transfer stations.

For more information on Council's waste facilities visit: [www.latrobe.vic.gov.au/Our\\_Services/Waste\\_and\\_Environment/Transfer\\_Stations](http://www.latrobe.vic.gov.au/Our_Services/Waste_and_Environment/Transfer_Stations)

## Large fines for dumping of unwanted scrap metal

Latrobe City Council is reminding residents that dumping unwanted items is an offence.

The dumping of unwanted material, including scrap metal, old appliances, vehicle parts and machinery, also known as aggravated littering, is an offence under the provisions of the Environment Protection Act 1970 that carries a maximum penalty of

\$9120.

"Following complaints of repeated dumping outside a scrap recycling merchant's premises in Head Street, Traralgon, Council has increased Local Laws patrols in the Head Street area during the day and night and will take action against any person found dumping material," said Latrobe City Mayor, Councillor Michael Rossiter,





# Smart Saver

Discount Variety Store

**OPEN 7 DAYS**

## WINTER CLOTHING

### WINTER ESSENTIALS

*Jackets and Sweaters,  
Track Pants,  
Hats, Socks*

Buy ONE get a  
Second ONE

# 20% OFF

\* Conditions Apply

Shop 3, Hazelwood Village Shopping Centre, Churchill






## NEW WINTER WARMERS!

### CHECK OUT OUR MENU

Dine in Meals Available:  
Mon – Fri: 9am – 2pm  
Sat: 8.30am – 1.00pm

Shop 9 West Place Shopping Centre  
Churchill.  
Opposite Woolworths  
PHONE: (03) 51221222

Opening Hours: Mon – Fri 9am – 4pm  
Sat NOW OPEN 8.30am – 2pm

Vintage C'hill are FINALISTS in  
Southern Cross Austereo's 2016  
Peoples Choice Awards.  
For Excellence in Customer  
Service. Best Cafe/Bakery Category!



Thank-you to all our customers who voted for us!



# Darren Chester

Federal Member for Gippsland

- ✓ Supporting local jobs
- ✓ Mobile phone and telecommunications upgrades
- ✓ Safer local roads
- ✓ Protecting our environment
- ✓ Better health services
- ✓ Improving our schools
- ✓ Promoting small business
- ✓ Safe and secure communities



1300 131 785 [www.darrenchester.com](http://www.darrenchester.com)



## Something Similar



Frank Lees  
Chaplain

When thinking of the storyline of a favourite book or movie which has a 'twist' at the end, we may relish the experience.

There's a reason why we respond to stories like that. Would the storyline be as enjoyable without the hidden 'twist'?

But often when reading it again some time later, there's a difference because we know the 'twist' ahead of time.

The Old Testament storyline has something similar.

God created and directed a remarkable storyline that contained a hidden, key bit of information.

Every plot, every character, and every event points in some way to the initially 'hidden' event of

Jesus Christ's incarnation.

This 'hidden' piece of information is only fully revealed in the New Testament, which helps to make sense of the whole of the Old Testament account.

Whilst people debate Creation, focusing on 'what', 'how' and 'when'...the 'why' is of greater importance (and many are turned off by the 'what', 'how' and 'when').

Why did God speak everything into existence? Because He wanted to create everything through His Word (one title the New Testament gives to Jesus Christ).

Reading again the Creation account, and the Old Testament, with this 'hidden' piece of information revealed, enables us to see afresh that it's all about Jesus Christ!

Worth thinking about!

## Co-Operating Church Snippets



**PEST CONTROL SERVICES**  
I & G COMBRIDGE  
HAZELWOOD NTH  
**5166 1822**  
IAN & GLENDA  
www.combridgepestcontrol.com.au  
www.combridgepestcontrol.com.au  
Happy Christmas to all our valued customers and thanks for your support.

## Church Times

### Lumen Christi Catholic Church

Williams Avenue, Churchill  
Tel: 5134 2849

Father Francis/Father Antony

Saturday: Mass: 6.00pm

Sunday: Mass: 9.00am

1st and 3rd Sundays:

Yinnar: Mass: 10.30am

2nd and 4th Sundays:

Boolarra: Mass: 10.30am



### Churchill Christian Fellowship

Maple Crescent, Churchill  
Sunday: 10.00am

### Co-Operating Churches of Churchill

Sunday Service: 9.00am

Rev. Brenda Burney

Williams Avenue,

Churchill.

Tel: 5122 1480

### Boolarra/Yinnar Co-Operating Parish

1st and 2nd Sundays

11.00am

Christ Church Boolarra

3rd and 4th Sundays

11.00am

Yinnar

5th Sundays

11.00am

Yinnar South

Our monthly parish dinner get-togethers continue, with good numbers enjoying a time together to eat out and get to know each other more.

Cathie Halliwell has continued to lead relaxed worship on the first and third Sundays of the month. This is for people who may not be ready to come to church for 9am or someone who prefers an informal time of worship at 11am.

Our garage sale was a wonderful success. Thank you to all the church folks who put in to help in many ways to plan and execute the day, and to the public for coming along to snap up a bargain or two and help to keep the church and its programs running. There was yummy food to

enjoy or take home too, with sausages and onions in bread with sauces, pancakes made to perfection, and a range of cakes, pickles and chutneys on sale.

Keep your eye out for us at the Lions Market on the third Saturday of each month. Our wood raffle is very popular and there will be plants, marmalade, pickles and chutneys on sale there along with other goodies.

The Youth Group is having a wonderful time. Their theme this month was "Out of this World". John Sunderland brought along his telescope but unfortunately it was too cloudy to see the heavens. However the young people had loads of fun making balloon rockets,

using the air in them to shoot across the room. They also made planets from paper circles. Star shaped pizza and choc moon rocks for dessert was made for the meal and enjoyed by all.

Sharon says a big thank you to all her helpers.

Latrobe and Francis Orchestras visited us on the third Sunday for their annual concert.

Those who attended were treated to a variety of music from both orchestras and the string quartet from St Paul's Traralgon. There were also solo and duet items on violin and flutes respectively. The Church Ladies Fellowship provided a scrumptious afternoon tea which disappeared very fast.

# Knit in public day



World Wide Knit in Public (WWKiP) day is unique, in that it's the largest knitter run event in the world, first started in 2005. Events are organised by a volunteer or a group of volunteers in any country. It began as a way of knitters being together to enjoy knitting and have fun.

This event has been used as a means to show the general public that "not only grannies knit" and keep in mind that without grannies, we would not have the wealth of knitting knowledge that we do.

Two district ladies, Bronwyn and Marianne organised and held an open event at the Whistling Duck cafe Churchill on Saturday June 19, inviting others to join them. A very social and

fun time was enjoyed by the ladies, Bronwyn, Marianne, Maree, Marilyn, Dee, Julia and Brenda who were present.

All had an enjoyable time showing their work to members of the community who chose to stop and chat with the knitters. The knitters were all busy knitting their own projects, such as socks, scarves, jumper, hats and squares for rugs. Help was given to those who were having difficulty with patterns or stitches. Wool and needles were available for others to join in.

World Wide Knit in Public day is showing the general public that knitting can be a community activity in a very distinct way and not a solitary activity at home alone.

# Luke's Arts Festival

Including the 'Views from the Edge' Art Exhibition

An initiative of St.Luke's Uniting Church and Op Shop Entries are out for our Art Competition!

The Views from the Edge Art Exhibition is on again this year as part of the Biennial Luke's Arts Festival in Mental Health Week, and we want you to have plenty of time to prepare a piece to exhibit this year.

The Festival will run from Friday to Sunday October 7 to 9. Entry forms will be available from: the Opportunity Shop at St Luke's Uniting Church - 279 Princes Drive Morwell, by contacting the Church office on 5134 5366, (via Facebook "lukes arts festival and the views from the edge art exhibition" or our web page "www.victas.uca.org.au/UCA%20Resources/Presbyteries/

Gippsland/Pages/Future-Events.aspx.)

Pieces can be two or three dimensional art of all mediums including oil, watercolour, acrylic, photography, pen and ink, charcoal. Several prizes are on offer.

There will also be a community art project happening, and a coffee shop with live music.

We would welcome any volunteers from the community who would like to participate in any way. We will need help with people on the door of the coffee shop and would love to hear from musicians interested in a small gig! If you are looking to get some community based experience come and volunteer and get experience dealing with the public while you enjoy our festival!

Look forward to seeing you there!

## Friends of Latrobe City Libraries

### Change of Venue

The Friends of Latrobe City Libraries wish to announce a change of venue for their July meeting. Instead of meeting in Traralgon as planned, they will meet at

the new Moe Library on Wednesday July 27, starting at 7pm. All members of the community are welcome to attend. For further information please contact Jill Beck on 5174 1005.

## Gippsland Carers Association

Due to Gippsland Advocacy moving to Traralgon our Morwell support group has changed venues.

Support group days remain the same - meeting the first Wednesday of each month from 10am until midday.

August 3 - The Club Lounge at Morwell Bowling Club

September meeting -

TBA

October 5 - The Club Lounge at Morwell Bowling Club

November 2 - Latrobe Regional Gallery Friends room

December 7- The Club Lounge at Morwell Bowling Club

Lorraine Beasley  
Carer Mentor  
5133 3343

### Aaron Pearce

## Plumbing Services

PO Box 408 Churchill  
**0412 795 984**

- \* Split System Air Con
- \* Solar Hot Water
- \* Wood Heating
- \* Roofing
- \* Gas Fitting
- \* Drainage

Reg No 46053

For previous Issues, Advertising Enquiries, Competition Details, visit  
**www.cdnews.com.au**

## Exacto Factory Re-Union

### Did you work there?



Contact **Wayne Anderson** (sewing machine mechanic) organiser on **0402 803 871**

**November 19, 2016. Morwell RSL. 12 noon till late.**

Try our Yummy NEW menu - roasts, curries and soups

**Whistling Duck**  
CAFE

COME AND SEE US AT THE WHISTLING DUCK

**WEDNESDAY**

**PHONE 5122 3884**

**Mexican Night**

**Bookings Essential!**

**\$10 SENIORS MEALS - Thursdays 12.00 pm - 2.00 pm**

**\$10 PARMA NIGHT** Every Thursday Night **BOOKINGS ESSENTIAL!**

Hazelwood Village Shopping Centre. Phone 5122 3884

## Concrete never looked so good!



**Concrete**  
Holcim supply all size loads from Commercial to Residential and Domestic. We also have an extensive range of colour and exposed concrete.



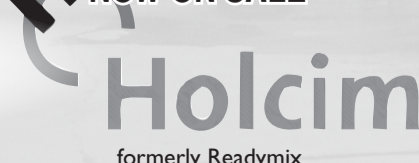
**Technical**  
Holcim have a NATA accredited technical laboratory based in Morwell.

**Aggregates**  
Holcim supply an extensive range of quarry products from aggregate through to crushed rock and packing sand.



Delicious Cupcakes and Tarts

**NOW ON SALE**



**Concrete**  
● Morwell  
Mick 03 5133 4800  
● Leongatha  
Peter 03 5662 3415

**Aggregates**  
● Jeeralang Quarry  
03 5166 1444  
● Tyers Sand  
03 5166 1444

Please see our decorative display at Dunbar Road Garden Supplies, Traralgon or visit our web site **www.Holcim.com.au**

Like us...  Churchill and District News

**mv** Mid Valley  
Family Medicine

Caring Family Medicine

You can now book your next appointment online or via our very own "MAACG" app [www.midvalleyfm.com.au](http://www.midvalleyfm.com.au) or call

**5134 3888**

Open 7 days  
Evening Clinic -  
Tuesday

**Bulk Billing**

To all Medicare Card Holders

Shop 59 Mid Valley Shopping Centre Morwell

**MAACG**

Medical & Aged Care Group

**STRUT RE-GAS GIPPSLAND**

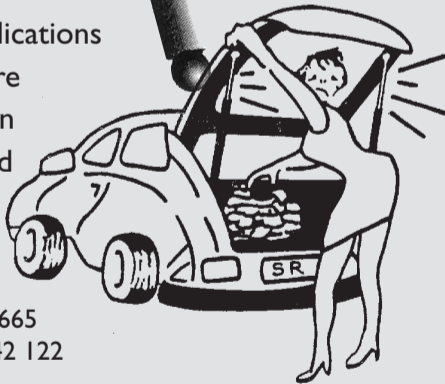
"The Strut Specialist"

Struts are not throw away items...

They can be RE-GASSED

PICK-UP IN MOST AREAS

- Sales of Steel and Stainless Struts
- Repairs to all types of Struts
- Design applications and pressure modification
- Handles and Fittings available



Tel: 5166 1665  
Mob: 0407 542 122

**New Churchill Motors**

Lot 8, Phillip Parade,  
Churchill, Vic. 3840  
Tel: 5122 1380  
[www.repcoservice.com.au](http://www.repcoservice.com.au)



Specializing in General repairs and Servicing of 4WD and Passenger Vehicles including:-

- \* Brake and Clutch Machining and Replacement
- \* Cylinder head and Flywheel machining
- \* Steering and Suspension repairs
- \* Tyre fitting and balancing
- \* Log book servicing and general repairs
- \* Specialist Diagnostic equipment for current models

Like us on Facebook 



All repairs covered by Repco Authorized Service Nationwide Warranty



**Gippsland Muslim Community Iftar celebrations in Churchill**

Ramadan - the holiest month of the muslim calendar began on June 6. Churchill is the centre of activity for the Gippsland Muslim community, as it has a strong connection because of the large number of students and staff based at the University. While the number of muslim students has fallen in recent years, the greater muslim community is still attracted to the University because of the facilities at the student Union Lounge.

During Ramadan the worlds one billion muslims abstain from food, drink and other pleasures from sunrise to sunset. Fasting is one of the Five Pillars of the religion and one of the highest forms of Islamic worship.

Fasting helps one to experience how a less fortunate person feels and what it is like to have an empty stomach. For muslims fasting leads one to appreciate the bounties of God (Allah), which can be easily taken for granted.

As well as fasting, muslims engage in constant prayer, charity and self-accountability during Ramadan.

The month is also a



time of togetherness, and it is customary for muslims to break the fast with other members of the community. Each weekend during Ramadan, the community gathers at the MUGCSU student union and "breaks their fast" in congregation. Over 150 Muslims from all over Gippsland including Sale, the Latrobe Valley, and West Gippsland come to Churchill for these events.

The Iftars are hosted by the Monash University Islamic

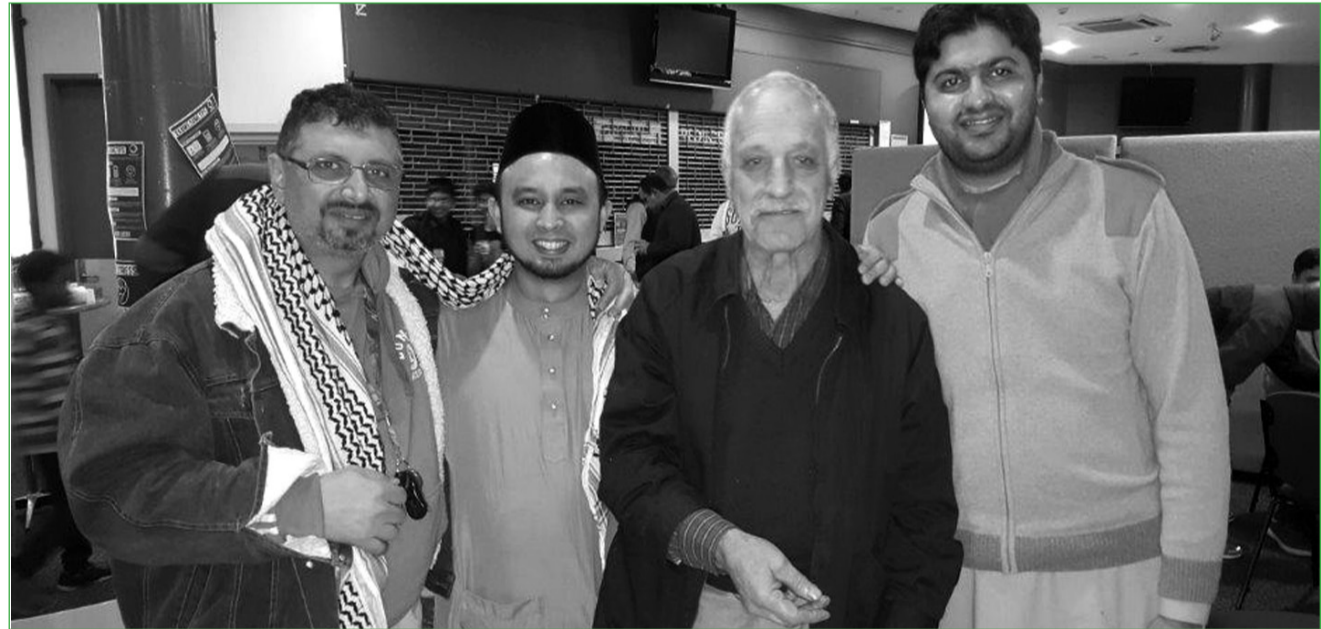
Society (MUIS), and the Gippsland Australian Muslim Community Incorporated (GAMCI). The muslim community is thankful to Federation University, the chaplaincy, MUGSU and MUIS for allowing them the use of the university facility for this purpose and for their continued support throughout the year.

The holy month of Ramadan ends with the sighting of the new moon in early July. At the end

of Ramadan Muslims will celebrate with early morning prayers and then visit friends and relatives. This is called Eid Ul Fitr (festival of breaking the fast).

The Gippsland Muslim community again got together in congregation at the end of Ramadan to celebrate this event in Churchill.

*Pictured are Gippsland Muslims getting together for the community Iftars.*



**Al-Anon 2**

**The meeting schedule lists open or closed meetings.**

Anyone concerned about someone else's drinking is welcome to attend any Al-Anon group meeting whether it is open or closed.

A closed meeting is exclusively for people troubled by someone else's drinking. An open meeting also welcomes guests and students.

**Is an appointment necessary to attend an Al-Anon or Alateen meeting?**

No advance notice is necessary. Anyone concerned about someone's drinking is welcome to attend. Unfortunately we do not have an Alateen meeting here in the Valley, but we can talk to Alateens.

**How to find an Al-Anon meeting.**

Call our numbers listed; go to the internet visit [www.al-anon.alateen.org/australia](http://www.al-anon.alateen.org/australia) or email [agso@alphalink.com.au](mailto:agso@alphalink.com.au) for information; go to the telephone book, it may be listed or ring 1300alanon (1300 252 666).

On line meetings and telephone calls sometimes supplement, rather than replace, face to face Al-Anon meetings.

They are also helpful for those who live in rural areas. As for travellers, they can catch up with a member anywhere in Australia.

**Are there dues or fees for membership?**

There are no dues or fees. Members make voluntary contributions because each group is self-supporting and declines outside contributions. Most groups pass a basket at each meeting to help cover its routine costs, such as renting the meeting room, supporting Al-Anon services and buying literature.

**What if I am concerned about someone else's drug problem?**

According to Al-Anon's 2009 membership survey, one in three Al-Anon members first came to Al-Anon family groups because a friend or relative had a drug problem. But after going to Al-Anon meetings for a while and learning more about alcoholism and its effects, nearly nine in ten of them came to realise that alcohol abuse was also part of the overall problem.

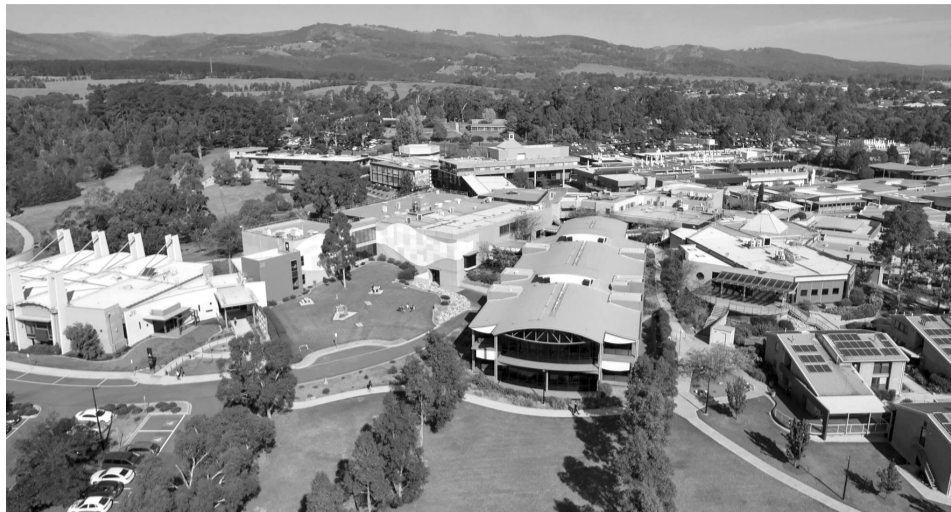
**Al-Anon effectiveness.**

About 95% of members report improved well-being; that the program helped them to improve their lives in many ways, according to the 2009 Al-Anon Membership survey. Members said their mental and physical health had been improved since attending Al-Anon family groups meetings.



# FedUni Gippsland Campus Free Year 11 and Year 12 Study Skills Day

**Federation**  
UNIVERSITY • AUSTRALIA



A bird's eye view of the Gippsland Campus, showing off the Auditorium and Library facilities, as well as the beautiful surrounds of Churchill

FedUni Gippsland Campus will be running a free Study Skills Day for VCE students on Tuesday September 20, from 10am – 4pm. The day will include international guest speaker Mark Dobson from New York's Bard High School Early College, which was recognised by US President Barack Obama in 2009 for its innovation in Education. Mark will be running a workshop based on the study skills practiced in New York.

Other sessions on the day include a mental health presentation by the Black Dog Institute, an English Revision session, and also an opportunity to speak to FedUni academics and students. Registrations are now open at [federation.edu.au/vcestudyskills](http://federation.edu.au/vcestudyskills)

## Mid-year Applications Now Open

Mid-year applications are now open for FedUni and close on Sunday July 24. Courses available for mid-year entry include: Arts, Criminal Justice, Community and Human Services, Business, Information Technology, Nursing (part time study for Semester Two 2016), Psychology and most Science courses. To learn more, call 1800 333 864 or

visit [federation.edu.au/midyear](http://federation.edu.au/midyear).

## Latrobe Valley Sustainability Summit

The Australian Youth Climate Coalition is hosting a summit for young Gippslanders on July 28 and 29, at FedUni's Churchill Auditorium. The event will be a great opportunity to engage with young Gippslanders who are passionate about the environment. The summit is being run in partnership with the Gippsland Regional Centre of Expertise on Education for Sustainable Development, Gippsland Climate Change Network, Gippsland Waste

and Resource Recovery Group, Earth Worker and the Latrobe Valley Sustainability Group. To learn more and register, visit [bit.ly/lvss2016](http://bit.ly/lvss2016).

## New aerial images of the Gippsland Campus

FedUni has taken to the skies, so to speak! With the use of aerial-drone technology, a series of new images have been taken that capture the Gippsland campus from a range of never before seen angles. The recent shoot also included a series of videos that capture the extensive facilities, accommodation and nearby township. The photos and footage will be used in future material to promote

the campus and region, particularly to prospective international students and visitors.

## Tour the Gippsland Campus

Are you interested in a tour of the Gippsland Campus? Whether you're a secondary school student, parent, a mature-age person thinking of returning to study, or a community group, the staff at FedUni are available to provide you with a personalised tour of the fantastic facilities in Churchill and to answer your questions. To book a tour, call 1800 333 864 or email [info@federation.edu.au](mailto:info@federation.edu.au)

## Cold weather pollution

quality by checking they are using wood heaters correctly by following these simple maintenance steps:

1. Have your flue professionally cleaned and checked.

2. Don't let your heater smoulder overnight; this starves the fire of oxygen and produces more smoke leading to air pollution. Keep enough air in the fire to maintain a flame.

3. Burn only dry, seasoned, untreated hardwood in your wood heater. Unseasoned wood has lots of moisture and creates excessive smoke.

4. Store your wood under cover in a dry, ventilated area. Freshly cut wood must be stored for at least eight to twelve months before being used.

5. Never burn rubbish, driftwood or painted or treated wood as they produce excessive smoke and can produce poisonous gases.

6. When lighting a cold heater get a hot fire going quickly using plenty of dry kindling and paper.

7. Use several small logs rather than one large log and stack them loosely in your heater; this allows air to circulate around the wood.

8. Keep the flame lively and bright. Your fire should only smoke when you first light it and when you add extra fuel. Open the air controls fully for 5 minutes before and 15 to 20 minutes after reloading the heater. The less smoke you can see, the hotter and cleaner your fire is burning.

9. Check your

chimney regularly to see how well your fire is burning. If there is smoke coming from the chimney, increase the air supply to your fire.

10. If you are buying a wood heater, make sure it has a compliance plate showing it meets the Australian Standard (AS/NZS 4013:1999).

Councillor Rossiter encouraged residents to have a chat with their neighbours if they were having issues with wood smoke in their area.

"Many times a neighbour won't even know that their wood heater is causing you an issue", Councillor Rossiter concluded.

For further information regarding wood burning and air quality visit [www.epa.vic.gov.au](http://www.epa.vic.gov.au) or contact Council's Health Services on 1300 367 700.

# Hazelwood implementation plan

## State Implementation Plan a critical step towards improving health outcomes for Latrobe Valley community

Gippsland Primary Health Network (PHN) welcomes the Victorian Government Hazelwood Implementation Plan aimed at improving better health outcomes for people affected by the Latrobe Valley 2014 mine fire and into the future.

The implementation plan addresses key recommendations for health improvement in the Latrobe Valley including designating the Latrobe Valley as a health improvement geographical zone, supporting a health advocacy role, and support and fund health improvement strategies within a Health Innovation Zone.

Gippsland PHN Board Chair, Dr Nola Maxfield, said Gippsland PHN will be working with key agencies to support initiatives that respond to the accepted recommendations of the Hazelwood Mine Fire Inquiry.

Gippsland PHN will play a key role in the Latrobe Health Taskforce, guiding the development of a community engagement strategy and supporting the establishment of the Latrobe Health Assembly.

We know from our health planning work that alcohol and other drugs are key issues for Gippsland.

We will be putting resources into these areas so

that extra support is available and coordinated for those who were affected by the mine fire. Gippsland PHN has started initial conversations of collaboration with health agencies and the community in the Latrobe Valley to direct funding for mental health and alcohol and other drugs in 2016/17.

A key function of our organisation is working with health professionals in Gippsland. Work has already commenced on developing health pathways for clinicians in Gippsland, and specific work will be done in the Latrobe Valley to enable health professionals to diagnose and manage priority chronic diseases, such as diabetes, anxiety and depression, respiratory problems, and to manage and direct people affected by the mine fire in a coordinated and consistent way".

Ms Marianne Shearer, CEO of Gippsland PHN said Gippsland PHN will be required to work alongside the State Government, other principal health agencies in Gippsland, non-government health agencies, community and other key stakeholders to support the implementation plan handed down by the State.

We look forward to the chance to collaborate with our partners in the Latrobe Valley to ensure the Hazelwood Mine Fire Inquiry recommendations for health improvement are realised.

For previous Issues,  
Advertising Enquiries,  
Competition Details,  
visit

[www.cdnews.com.au](http://www.cdnews.com.au)

**Churchill Self Storage** 66 Switchback Road  
Cnr. Switchback Rd & McCormick St, Churchill

**THREE SIZES:**

3m x 3m ★ 3m x 4.5m ★ 3m x 6m

Secure access via Electric Gate and Your Padlock

Phone 03 5134 2790

Contact:  
B. J Bennett & Co. REAL ESTATE PTY LTD  
219 COMMERCIAL RD, MORWELL

Professionals



## NEED A HOLIDAY..? Book with me, Matt Schmitz

- Over 60 countries under my belt
- Over 10 years in travel
- Afterhours appointments available
- I come to you
- 24/7 emergency support
- 100% Financially protected



travel counsellors

With us...it's personal

Matt

TEL: 5122 1108

MOB: 0466 565 723

E: [matt.schmitz@travelcounsellors.com.au](mailto:matt.schmitz@travelcounsellors.com.au)

# Get Fit - Play Tennis

# ROUND ROBIN and TOURNAMENT

## Manning Drive, Churchill



# Churchill Tennis Club

# Monday, September 19, 2016

### Churchill Tennis Club

Get Fit - Play Tennis Round Robin & Tournament  
Monday, Sept 19, 2016 - 9.00 am - 11.00 am  
**Beginners entry Form**

Player's Name.....  
Phone No.....  
Date of Birth.....  
Tick the event you would like to enter.  
Age as at September 19, 2016

7 & Under	10 & Under	13 & Under	16 & Under

#### Conditions of Entry

\* Players enter at own risk.  
\* The referee's decision will be final.  
**I understand the Conditions of Entry**

Signature of Parent/Guardian

For Further information contact  
Carol Scott 0409 326 769  
Entries close: Thursday, Sept 15, 2016  
Post entries to: Churchill Tennis Club, PO Box 270,  
Churchill VIC 3842

### Never played before?

Come along and have a go in a relaxed and friendly environment.  
*Racquets and balls supplied.*

### 9.00 am - 11.00 am Non-competition players

(have never played competition before or played Section 8 and 9 in Latrobe Valley Tennis Association or C Grade and B2 in Loy Yang Tennis Association).

### 11.30 am - 3.00 pm Competition Players

To Register:  
Fill in the Entry Form and Mail to:-  
PO Box Box 270, Churchill 3842  
by Thursday, September 15, 2016  
Entry Forms are also available at

**www.cdnews.com.au**  
More Information?  
Contact Carol Scott 0409 326 769

### Churchill Tennis Club

Get Fit - Play Tennis Round Robin & Tournament  
Monday, Sept 19, 2016 - 11.30 am - 3.00 pm  
**Competition entry Form**

Player's Name.....  
Phone No.....  
Date of Birth.....  
Tick the event you would like to enter.  
Age as at September 19, 2016

Section Played		
Latrobe Valley	Loy Yang	Other

#### Conditions of Entry

\* Players enter at own risk.  
\* The referee's decision will be final.  
**I understand the Conditions of Entry**

Signature of Parent/Guardian

For Further information contact  
Carol Scott 0409 326 769  
Entries close: Thursday, Sept 15, 2016  
Post entries to: Churchill Tennis Club, PO Box 270,  
Churchill VIC 3842

## Heaps of trophies to be won

## School Holiday Fun

## Sausage Sizzle

**\$2**  
Only  
to Enter  
(\$5 Family)



## Lucky Door Prizes



# Preschool enrolments for 2017

Preschool enrolments for 2017 are open. Please visit [www.latrobe.vic.gov.au/preschool](http://www.latrobe.vic.gov.au/preschool) or call 1300 367 700 for more information.

We are fortunate to have in Churchill, highly qualified and enthusiastic staff to run our two modern, purpose built

preschools.

The Churchill preschool has been awarded a Sunsmart/Healthy eating and physical activity achievement award, while Glendonald preschool was invited by Latrobe Regional Gallery (LRG) to create a canvas art - work

piece that represented the theme "My country, our country, we all belong". Their work will be displayed in July and August.

Both preschools are a delight to visit.



## Churchill & District Lions Club



Meet  
1st and 3rd Wednesday  
of each Month

Contact **Bob Lowick** Phone: **0408 377 781**

## Churchill Town Safety Group



This month, we are looking at road conditions with the wet weather. Road conditions can change rapidly when Winter comes along.

Pot holes can form very easily which can damage the tyres on your vehicle. Some cars now have "Low Profile" tyres which means that there is less rubber between the road and your wheel.

If the road develops a pot hole with jagged edges, or the side of the road gives way, "Low Profile" tyres tend to get damaged a lot easier.

A rapidly deflating tyre can upset the handling of the car, especially at high speed leading to an accident. If you find newly formed pot

holes or other associated road damage around town, you can report it to Latrobe City, and it may be repaired fairly quickly.

Attaching a photo and an accurate description of the location of the damage can increase the chances of a quick repair. Other roads may come under the control of Vic Roads. Latrobe city can be contacted via their Web page: [http://www.latrobe.vic.gov.au/About\\_Us/Contact\\_Us/Report\\_an\\_Issue](http://www.latrobe.vic.gov.au/About_Us/Contact_Us/Report_an_Issue)

Vic roads can be contacted on their Web page: <https://www.vicroads.vic.gov.au/contact-us/feedback-and-enquiries>

Take care on the roads and travel to the conditions in inclement weather.



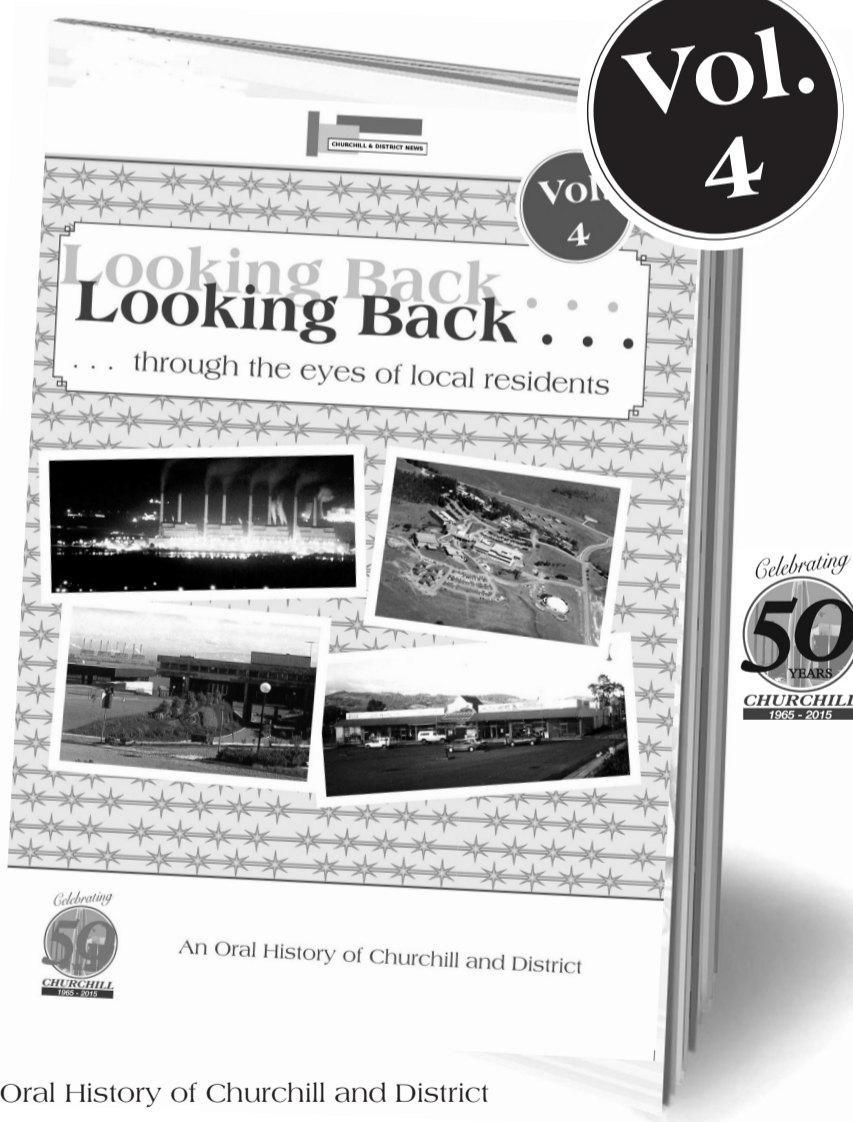
**FOR EMERGENCIES, RING 000**

**FOR POLICE ASSISTANCE, RING 000**

Police advise members of the public that, if you require police assistance, call 000. The police communications operator will be able to assess your need and either send a police vehicle, relay a message or find out when the police station will be attended.

## Looking Back . . .

. . . through the eyes of local residents



An Oral History of Churchill and District

**\$15**  
per copy

Also available  
all Four Volumes **\$55**

Released as part of the fiftieth birthday celebrations of Churchill township "Looking Back . . . An Oral History of Churchill and District" contains memories of some of the first residents of Churchill.

To order your copy please contact Ruth Place 5122 1961.

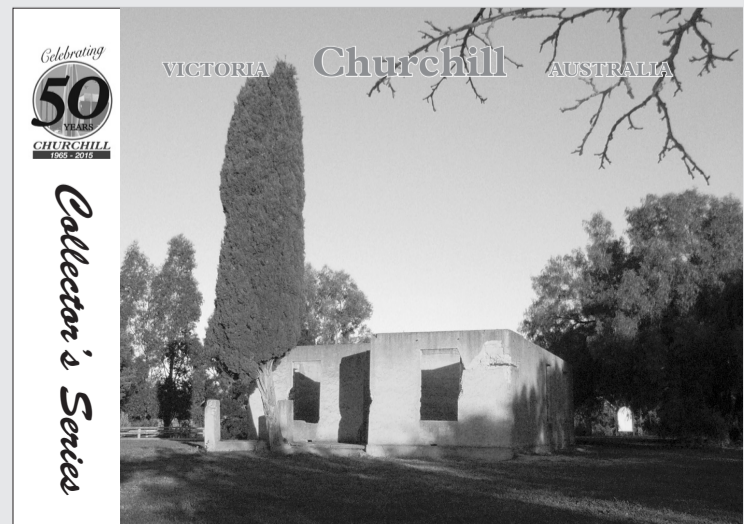
Also available at Churchill Newsagency, Vintage C'hill Cafe, Churchill Post Office, and Churchill Neighbourhood Centre.



"Connecting Your Community"

## Collector's Series Postcards

Series of 8 — **\$4** (or 50c each)



# Nappies from drive are gratefully received

Churchill & District News thanks Churchill Neighbourhood Centre and Churchill Discount Chemist for their participation in the Nappy Collective in May. They collected 726 left over, unused nappies between them for Churchill & District News to distribute to local organisations. Together with a collection held at the office of Russell Northe Morwell, a total of 1,130 nappies were presented to representatives from Berry Street, Anglicare Victoria and participants of the Kurnai Young Parents Program.

This took place on June 1 when representatives attended a presentation by Russell Northe at Kurnai College.

In presenting the nappies, Russell Northe thanked the Latrobe community for their overwhelming response to the May drive of the Nappy Collective Giving Project. Through the generosity of locals, 1,130 nappies were donated at drop off points at Churchill Discount Chemist, Churchill Neighbourhood Centre and his office in Morwell. In his presentation he thanked everyone who donated nappies and also the Churchill & District News team who facilitated collection points in Churchill.

He also spoke of the marvellous job all these groups do in supporting many young parents who can sometimes find themselves in challenging circumstances, and hoped that the donation of the nappies would make some small and positive difference to them. The next collective will take place in October.

Kathy Ryan from Anglicare thanked all involved for their initiative and support. She said, "These nappies will be shared amongst families in need in



the Parent Support Program, the Cradle to Kinder Program and the Integrated Family Services Program in Latrobe. These programs provide in-home parenting support to families who need assistance with things like routines and boundaries for their children, sleep and settling, child safety and education.

Often families who come into contact with Anglicare Victoria experience financial hardship, so having access to extra nappies, will be greatly appreciated by the families whom we support".

Kaylene Unitt from Berry Street said, "The nappies would be particularly welcome to them, as often

families in crisis may seek help in the early hours of the morning. This could be in emergency situations, when there is not time to consider every need, so to be able to provide for the younger children will be a great help. Other needs that Berry Street has at the moment are 62 children between the ages of 0 - 18 in foster care, and nappies will be particularly helpful to some of these foster parents. They will all be put to very good use."


Simone, co-ordinator of the Young Parents Support Program gave thanks for the donated nappies. At the moment, there are twenty girls in the program, attending

school four days a week, to further their education. The donation of so many nappies will be a bonus to all the young Mums, as they have limited income and the gifts will be put to very good use.

Many thanks were also given to Tayla from Russell Northe's office, who organised the presentation day and the distribution of the nappies.

The presentation was completed with a lovely morning tea prepared by members of the Kurnai Parenting Program, and enjoyed by everyone.





**THE Ultimate Ride-On BRUSH CUTTER**

**"SEEING IS BELIEVING"**

Unique blade system

With the ability to perform in conditions that will destroy normal mowing equipment, the Razorback is the perfect machine to create and maintain your fire-breaks.

- Powers through thick brush & heavy vegetation with ease due to shaft drive deck
- Positive traction diff-locks
- 4 models available: CM1401, CMX1402, CMX186 and CMX227

**30° SLOPES**  
CE Certified



**4WD + Low Centre of Gravity = SUPERB STABILITY ON SLOPES**

Book a demonstration today - SEEING IS BELIEVING!  
 Central Gippsland Mowers Ph: 03 5134 8899  
**W: www.therazorback.com.au**



**CHURCHILL & DISTRICT NEWS**

"Connecting Your Community"

Volunteering is good for you!

The Churchill & District News is produced by volunteers. We are looking for people who would like to be involved. Have a flair for Graphic Arts, Selling "Space" . . . ? We would like to hear from you! Please ring Ruth on 5122 1961

# Latrobe Valley Field Naturalists' Club



## “What some locals do”

The Latrobe Valley Field Naturalists' Club's next meeting will be held on Friday, July 22 at the Uniting Church Hall in Newborough.

Members of the Club travel throughout Australia and beyond with their cameras to capture aspects of the natural world. At this meeting they are invited to share their photographs and information about a diverse range of topics in mini

presentations. It is always a varied and very interesting night finding out “what some locals do”.

The next day there will be an excursion to the Lyrebird Walk, Darlimurla.

Visitors are most welcome to both activities; there is no charge. For more information phone 5127 3393 or 5634 2246.

Photograph: Orange Everlastings by Philip Rayment

# STAMP MATTERS- A NEW EXPERIENCE



## Stamp Matters - a new experience

### Tools of the trade

Like anything else, stamp collecting has a basic set of tools which help the collector with his hobby. The items pictured are the tools you need.

### Tweezers

These are probably the most important tool to own. They allow the collector to hold the stamp steady to inspect both the front and back to see if there are any imperfections without touching the stamp.

This is done at all times, but particularly when you are buying the stamp. The dealer does not want his goods contaminated by anything on your hands such as perspiration, dirt or chemicals so tweezers are a must at this time.

The same applies when the stamp is yours. Perspiration can moisten the gum on the back of a stamp, causing it to stick to pages and your stamp will be damaged when you move it so the golden rule is:- Always use tweezers.

### Watermark tray and fluid

This is used to detect watermarks on stamps. The stamp is placed face-down in the cleaned tray and the fluid is applied. The watermark will appear as the fluid moistens the stamp. When you have noted the watermark, remove it from the tray and the fluid will evaporate, leaving the stamp in its original condition. The fluid is lighter fluid and can be bought from a tobacconist. Just remember, it is highly flammable, so when you are checking watermarks, keep away from naked flames.

### Magnifying glass

The magnifying glass allows you to see the tiny details of the stamp. The one shown here has a light attached but that is an added extra. An ordinary lens is sufficient but you do need good light to work in.

### Perforation gauge

The perforation gauge

can be made from cardboard or plastic. The perforations are shown as a series of dots. To measure the perforations, move the stamp across the line of dots until they match up exactly. That is, when the dots fill in the perforation holes right across the edge of the stamp. Be sure they are exactly aligned right across, because often they appear to be aligned at the beginning but not the end when the perforation readings are close together. For example P13 is often mistaken for P 12 ½ or P 13 ½ .

### Stamp hinges

Stamp hinges are used less

today than they were, since the spread of stockbooks. A stamp hinge is a small piece of paper measuring about 3cm x 2cm, gummed on one side. They are folded in half, and one half is moistened and applied to the top part of the stamp. The other side is then moistened and placed in position on the page of your stamp album. Hinges can be bought pre-folded. The practice is called mounting but it does disturb the gum on a mint stamp and detracts from its value. Also, poor quality hinges do not peel off, making it necessary to soak them off to clean the stamp.





# PLACE YOUR AD HERE

SEND YOUR MESSAGE ALL OVER THE LOCAL DISTRICT

5122 1961

CDNEWS.COM.AU

## D.P.R. Plumbing

ABN 91 701 878 302

David Reggardo Lic No. 18319 ARC Tick L104392

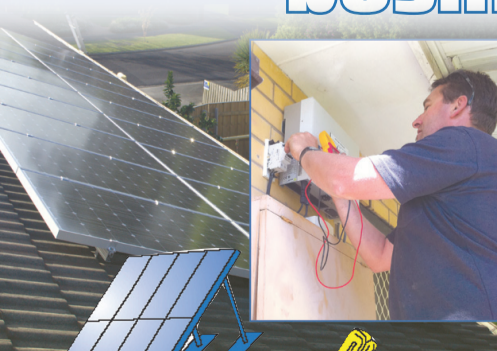
## SUPPLY AND INSTALLATION OF SPLIT SYSTEM AIR CONDITIONERS

Supply, installation, service and repairs of hot water services, gas appliances and pumps, tap repairs and small jobs welcome.

145 Gilberts Road, Yinnar South

Mob: 0417 343 929 Ph: 5169 1728

## Churchill's own solar and electrical family business



SPEAK TO ERIC AND SUE AT WATTS SMART ELECTRICAL

- Domestic and Commercial Electrical Work - Maintenance
- Energy Consulting Service - Solar Power - New Installations

Servicing the Latrobe Valley and Gippsland

## watts smart ELECTRICAL

PTY LTD REG No. 20746

0438 253 882

www.wattssmart.com.au

## YINNAR

# Country Cafe

TAKE AWAY/EAT IN

Hamburgers  
Fish and Chips

OPEN  
7 Days a week

Phone 5163 1285

Monday - Thursday 7.00 am - 5.30 pm  
Friday 7.00 am - 8.00 pm  
Saturday and Sunday 8.00 am - 5.30 pm

32 MAIN STREET YINNAR



# Friends of Morwell National Park

This snippet on the activities of the Friends of Morwell National Park was sourced from early Newsletter files.

## 10th November, 1986.

Dear Friends,  
It was a small, but very pleasant gathering of the friends group for an enjoyable Stringybark walk. The group helped with locating points of interest to form a text to accompany a photo or sketch which will be placed along the Stringybark Ridge track. We thank everyone who came along for their assistance

While walking the track, Neil Grigg, Haley and Daniel Close spotted a 5ft Goanna, which promptly ran up the nearest tree just high enough for Yvonne to grab a couple of snaps. A beautiful specimen he was too.

Over our billy tea we discussed some issues. Firstly, Ian Leversha (Assistant Regional Manager at Yarram) has informed us that the L.C.C. recommendations to downgrade the park have not been accepted as yet by the government, which means the pressure is off for now and I underline for now. It doesn't mean it won't come up again in the future, so we'll have to keep on our toes!

The Billys Creek concept plan, which was completed by Jim Waayers, was not accepted by the Yarram Regional Manager and has

now been revised. Hopefully, it will be available in the near future.

We were informed by Mr. Barry Murphy, M.L.C. that the Minister Ms Joan Kirner may pay the park a visit at a later date to enable Mr Murphy to organise a little reception in the order of press coverage etc. We will certainly keep you informed of her intended arrival.

Adrian Walker and Mrs. Brewster have very kindly provided us with historical photos to be copied and enlarged for display in the new information shelter, so our thanks goes to you both for your interest.

Now, on to our last meeting for 1986, which will be in the form of a family get together for a B.B.Q. tea starting at 5.30pm on Sunday 14th December. We ask that you bring your own meat with perhaps one salad and a dessert, that way we can arrange it on the tables for all to share. The friends group will provide billy tea as usual with the added bonus of some damper for the kids to cook in the barbie. Ian will take us on a spotlight walk around 8.30pm for those who feel energetic enough! It should be a great end to a very successful first year of our friends group, so don't miss out on all the fun and games.

Yours sincerely,  
Gail Roche."

## June Activity Report

At this month's activity we had Matt, Tamara, Ken, Peter, Beryl, Yuto, Rose and Darren. We had apologies from Mike, Cathy, Wendy, John and Margaret. The group met in the car park to talk to Grant and his brother Wayne about European Wasp nest removal. Grant for many years has been locating and killing wasp nests around the park and more recently in the Park.

Wasps are a large problem to our native insect species which they target as food sources and are a problem for visitors to the park. Up to now Grant has been using his own equipment and buying the sprays and powders required. Our group will support him to continue with this important job (which we don't have the skills or equipment to complete), by annually purchasing the sprays and powders he uses. He already has a number of wasp nest sites located along Billys Creek. The group wishes to greatly thank Grant for undertaking this work.

Matt has over the last month finally received the brush cutter and whipper snipper. It was a long and difficult process but now we have the equipment. Matt told the group about the animals seen on the motion detection cameras over the last month. Caught on the

camera were a large number of wombats, some wallabies and sadly a cat. That makes a few cats that been caught on camera in the park. Another wallaby has been found shot through the head on the Grand Strzelecki Track. It is very sad that a native animal has been killed by a hunter, in the park.

The group travelled via car to Silvertop Hill. Matt, Tamara and Rose collected the chainsaw from the shed and met the rest of the group at Brewster's Road. When travelling in, a large collection of branches was found down across the track. The group used the chainsaw to clear this obstruction.

We travelled on to the side boundary and then on foot made our way down the hill (clearing as we went) down to Muttonwood Track. A number of trees and some undergrowth needed to be cleared from this track. The group completed the loop, clearing as we went, back towards the vehicles.

A collection of wire was uncovered and still remains at the beginning of Muttonwood Track. The group then travelled back to the Kerry Road picnic area for lunch. Over and after lunch four koalas were observed near the picnic area. We finished after lunch and it was a good decision with rain starting 15 minutes after we ended.



SCRAPBOOKING SUPPLIES

**CHILLI CRAFTS**

chillicrafts.blogspot.com.au  
0428 346 740

OPENING TIMES  
TUESDAY and THURSDAYS,  
10 - 3 PM  
WEDNESDAY and FRIDAY,  
1 - 3 PM

CHECK FACEBOOK  
OR CALL FOR CLASS TIMES

35 CHURCH STREET, MORWELL



**Sight & Sound Engineering**

Custom Electronics - Mobile Phone / Pc Repair Sales and Service - Steam & Origin Gaming Stations - Cases for Mobile Phone/Tablet - New PC systems / Upgrades - Home Theatre / Projector - VHS to DVD Conversion - Internet Access Desks

**Trevor Whelan**

Shop 16 West Place Churchill  
(Access from Marina Drive)  
ABN 57 719 482 063  
Mob 0448690757  
PH 03 5122 3602  
ford460v8@hotmail.com  
www.sightandsoundengineering.com.au  
P.O. Box 240  
Churchill Vic 3842

# Valley Trophy Centre

60 George Street, Morwell

\*Engraving \*Personalised Coffee Mugs  
\*Name Badges \*Giftware and Pewter  
\*Glass Engraving \*Large Trophy Display

**5134 1493**

email: vtrophy@bigpond.net.au  
www.valleytrophycentre.com.au



# Australian Plant Society

Plants in my Garden 49

By Mike Beamish

Species: *Lomatia fraseri*

Family: Proteaceae

Derivation:

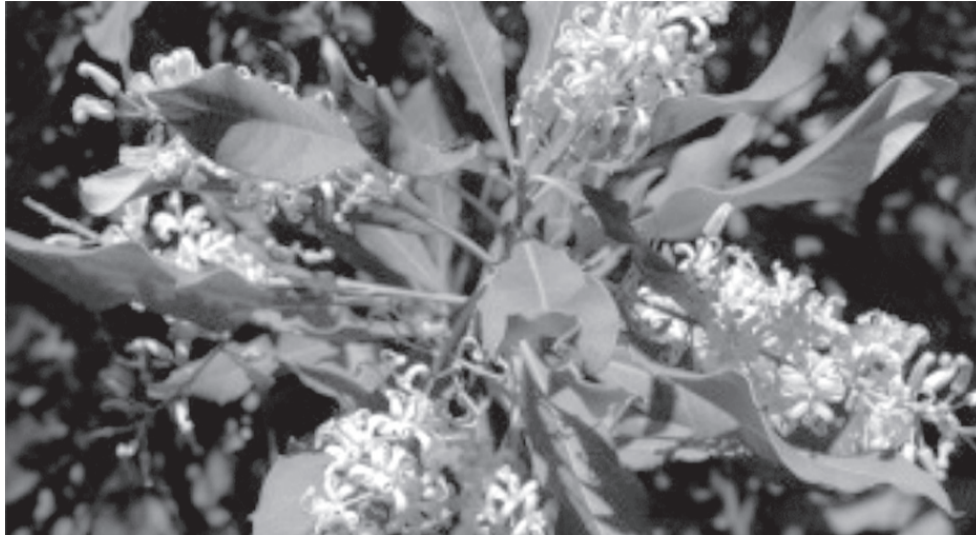
*Lomatia*: From the Greek, *loma*, a fringe or border, referring to the papery wing that surrounds the seed. Pronounced lo-may-tee-a or lo-may-sha.

*Fraseri*: Named in honor of Charles Fraser (1788-1831), who was placed in charge of what is now the Royal Botanic Gardens in Sydney in 1816 and was given the title of 'Colonial Botanist' in 1821.

Common Name: Silky, Forest or Tree *Lomatia*.

Distribution: Found in New South Wales in heaths, open woodlands and forests along the Great Dividing Range from roughly Grafton in the north and south to Victoria and Tasmania, where it favours sheltered gullies at altitudes up to 1500m.

Description: A very variable shrub with height dependant on its habitat, 50cm tall in exposed areas and up to two metres tall by one metre across in high



altitude forests (e.g. Snowy Range in Victoria) or a small tree to seven metres tall (e.g. on the banks of Lake Tali Karng in Victoria). Leaves are also variable. Length ranges from 5 to 15cm, with the undersides clothed in silky hairs. Flowering occurs over summer, with aromatic cream or white racemes up to 12cm long. Each flower is about 8mm long and slightly hairy on the outside. The fruits turn black and leathery when they mature and are up to 25mm long.

Opinion: My plant

lives under the pergola on the south side of the house, in my 'rainforest' section and is currently close to three metres tall and still going. It is in full flower at the moment, providing plenty of attraction to the neighbourhood insects (I haven't noticed the birds feeding in it) and filling the backyard with its pleasant vanilla caramel smell on warmer days. The specimen was probably bought from the South Gippsland Flower Show a few years back. Both of the wild forms I have seen, the *Grevillea*-like

shrubs at Moroka Hut and the tall trees at Tali Karng, inspired me to acquire a specimen, particularly the Tali Karng form, which brings back memories of camping underneath the trees, which were buzzing with insects in the summer heat and smothering us in their delicious scent. Pity about the mongrel hills that have to be scaled or descended to get there!

For details about our August meeting please contact Marg on 0428 601 425.

Understanding how my father's drinking affected my choice of partner.....

I left my first husband because of his behaviour when drinking, and a pastor recommended that I go to Al-Anon, but I thought my husband just needed to stop drinking and everything would be all right.

Later I was attracted to another man whose drinking also affected me.

Over a period of several years we lived together and married. All the while his drinking progressed, along with all the behaviour that went with it. In desperation, I came to the doors of Al-Anon already knowing that it was to help me overcome the effects of the family disease - alcoholism. What I did not recognise was

that alcoholism in my father, grandfather and uncles had also affected me.

More importantly my mother's reactions to their drinking had the most influence on my inability to cope.

I came to Al-Anon, abandoned my stubbornness, opened my mind and never regretted it a day since.

The welcome I received began my road to recovery, a path with ups and downs, but clearly towards a better more serene life.

Meetings: Traralgon Monday 10am, Learning House Breed Street.

Newborough Tuesday 8pm or Wednesday 1pm at the Uniting Church, or phone Al-Anon 1300Al-anon 1300 252 666.

## Community-minded citizens can stand for council

Elections are just around the corner in Latrobe City Council and chief executive officer, Gary Van Driel, is encouraging community-minded citizens to consider standing for Council.

Mr Van Driel said now was the time for potential candidates to learn more about what's involved in standing for Council and planning an election campaign.

"Becoming a councillor is a great opportunity to influence the future direction of the local community. If you are older than 18 and on the electoral roll for the council area, the chances are you are eligible to stand for Council.

Professionals and people with a background

in business would find the position rewarding, as would individuals with a background or interest in providing services to the community".

Mr Van Driel said Latrobe City Council delivered more than 100 community services and was responsible for more than \$1.45 billion worth of infrastructure and assets, and an annual budget of around \$130 million.

"There's a great amount of responsibility to make decisions that lead to the best outcomes for the community. This will be made especially challenging in the rate-capping environment Council will face in its next term.

Councillors will find that having a broad base of skills

and experience to draw from helps make that decision-making process easier".

Council has joined a state-wide 'Stand for Council' campaign to encourage citizens to consider putting themselves forward and to help candidates understand what is involved in becoming a councillor.

"Deciding to stand for council is a big decision. A councillor's role is exciting, but also demanding, and prospective candidates should find out what's involved before nominating for election", Mr Van Driel said.

"A dedicated website has been launched where candidates can check their eligibility to stand for Council

and find about more about the day-to-day activities of a councillor. There is a link to the website on Council's website or you can visit it direct by going to [www.standforcouncil.com.au](http://www.standforcouncil.com.au)".

For more information or to register online visit [www.vlga.org.au/Home](http://www.vlga.org.au/Home).

Elections for Latrobe City Council will be conducted by postal voting. Postal voting forms will be sent out in early October and must be returned by **6pm on Friday October 21, 2016**.

To find out more about the election process visit [www.vec.vic.gov.au](http://www.vec.vic.gov.au)

## Skills to last you a lifetime

Applications have just opened for members of the public interested in becoming Lifeline Telephone Crisis Supporters.

The Lifeline network took over a million calls last year and the demand is set to increase in coming years as people become more aware of issues like mental health, suicide, domestic violence and services such as Lifeline that can help during a crisis.

Lifeline Gippsland CEO Claire Davis highlighted the lifesaving work of Lifeline's volunteers across Australia, as well as the vital role that the Gippsland community can play.

"There is currently one suicide every three hours in Australia, which is the

highest rate of suicide deaths recorded in the past ten years, according to ABS statistics. The figures are double the road toll" Ms Davis said.

"Across Gippsland and the country, there has been an increase in the number of people seeking help. While it is extremely positive that more people are reaching out, we need more volunteers to support these Australians going through tough times."

Ms Davis also said that volunteering for Lifeline Gippsland gives people the opportunity to build new skills that are useful in all parts of their lives and give something back to the community.

"There is no greater gift that someone can give than to be there for another human

being in their time of need," Ms Davis said. "While calls to Lifeline are all unique, there is one thing they all have in common - they are about connecting people with care and emotional support in their time of need." Applications have just opened for members of the public interested in becoming Lifeline Telephone Crisis Supporters. Volunteer Telephone Crisis Supporters come from all walks of life, as full training is provided, which means they do not need any prior qualifications.

To learn more about becoming a Telephone Crisis Supporter, please contact the Lifeline Gippsland office on 5136 3500, visit [www.lg.org.au/volunteer](http://www.lg.org.au/volunteer) or email [Reception@llg.org.au](mailto:Reception@llg.org.au)

## Al-Anon 1



Where do you get your DVDs now?

See us for a large range from \$3

Nook and Cranny

97 Buckley Street, Morwell



## Church Rooms FOR HIRE



Church hall, meeting spaces and kitchen of the Co-operating Churches in Churchill at Cnr Williams Ave and McDonald Way for hire at reasonable rates.



For costs, guidelines and agreement ring

Rosslyn 0408 637 047

or Ruth 5122 1961



## Hazelwood Rotary

Contact:  
Reg Kemp, President - 0427 353 887

MEETINGS:  
Mondays 6.30pm - 8.00pm

ITALIAN AUSTRALIAN SPORTING AND SOCIAL CLUB MORWELL

"On May 31, 2016, Rotary announced US \$35 million in additional funds to end polio worldwide"



# CHURCHILL COMMUNITY MARKET

**LIVE  
MUSIC**

**SATURDAY, JUL 16 & AUG 20**  
**CHURCHILL HOTEL CARPARK**  
8.30am to 1.30pm

**GREAT  
FOOD**

Over 45 stalls selling fresh fruit and vegies, organic foods, jams and preservatives as well as local arts and crafts, plants and trees, oils and incense, clothes, hats, scarves and much, much more . . .

**JUMPING  
CASTLE**

*There is so much to enjoy  
for the whole family!*

Come along, bring the family pick up a bargain or two, enjoy live music, jumping castle for the kids, something for everyone . . .

**SUPPORT THE MARKET**  
**SUPPORT YOUR LOCAL COMMUNITY**

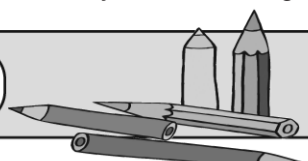
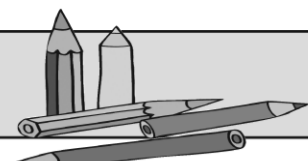


MARKET IS SPONSORED BY CHURCHILL HOTEL MANAGEMENT

**All Proceeds go to support our Churchill Community Projects**

For more information on Market or Stall bookings contact: Bob Lowick on 0408 377 781  
Email: churchill.lions@gmail.com





Girls' soccer

A couple of weeks ago the girls' soccer team went to the Olympians Soccer Ground in Traralgon to play four exiting games of soccer.

First we played Churchill and we won 2-1. The girls did a wonderful job and ran the whole game. Then we played Yinnar and tied 2-2, we were all tired after the first game. Then we had a bye and had lunch, the next game we played Boolarra 3-1. Lily and Charlotte scored the goals in that game, the defence was spot on. In our last game we won 4-0 this game was our best game so far, but we will try to improve and get 7-0 or more.

We did the best we could and it payed off. All the training that we did helped to improve our skills and we can't wait to win the next round!

After the hard effort the girls put in we won the girls' soccer tournament. We are excited for the next round of soccer.

Written by Niki and Lily  
Federation University  
Discovery

A week ago the Grade 4, 5 and 6s went to Federation University in Churchill next to Kurnai College. We are going to tell you a bit about it. So hope you enjoy.

At the start we all got on the bus and left for the University. When we got there we all had to go into the leisure theatre where we got split into four groups. We did four activities, that involved

T.L.C

Charlotte Di Toro  
School Captain  
4/5/6S

Discovery Club – Fed Uni

On Friday June 17, the 4/5/6's from Mrs Duncan and Mr Simmons' grade travelled to Federation University to participate in the Discovery Club which consisted of a variety of different subjects the university offers. This is the first time that Hazelwood North has been invited to this.

Firstly we were put in four equal groups which were made by splitting the grades into two different groups. Then we made our way over to our group leaders and received a bag which contained a pen, lanyard, a scavenger hunt sheet, a lollipop and a mini juice. Each group had a different coloured bag (blue, purple, red, orange). Then we set off to our destinations.

We did ICT [Information and Communications Technology]. In this subject we had to work on coding which are computer instructions for programming games and things like that. We had to get a truck to the delivery station using a range of commands [left, right, straight, deliver.] This activity was challenging because we had to really think about what we were doing and we had to know our left and right [which we all did!] Even though it was challenging, we showed resilience and kept persisting to complete various levels. This was a

fun activity.

We then did Art. In this subject we had to create a Zentangle. We have done Zentangles at school so they made this more difficult and challenging for us. We got to choose from a circle, rectangle or star shape, or if we wanted to, we could make our own. We could use grey lead pencil or coloured pencils or textas.

Science was our next subject. This was great fun and interesting. We had to hypothesise the outcome of our experiment. We did an experiment which was related to density. We poured water into a cup, then added food colouring. We added dishwashing liquid and then oil. These did not mix and we ended up with three different levels. The dishwashing liquid was on the bottom, then the water and the oil was on the top. We then added different materials to see if they would float or sink. Some things sank to the bottom, other things stayed on the top of the water or on the top of the oil. We asked lots of questions and did lots of hypothesising and predicting. At the end of our experiment we stirred all of the ingredients together and the dishwashing liquid mixed with the water and it was on the bottom. The oil stayed on the top. Water/dishwashing liquid is more dense than oil. Things that are dense have more atoms than those that are less dense.

We then moved onto nursing. We looked at a



skeleton (Frank) as well as a dummy. We had a series of questions relating to the body and we had to answer them and then find the relevant body part and put it in the right spot. This was about the major organs on the inside of our body. We also discussed germs and did an experiment with moisturiser and glitter and washed it off with water. Most of the germs were still on our hands. We then washed it off with soap and the germs had nearly disappeared. To see the germs we used a special light which was blue in colour but it was called a black light.

We went to the Switchback Gallery where we saw a really interesting piece of art that a university student had created. It was lots of different sized circular pieces of material that had been made hard, and were hung up at different heights. It was very effective and clever.

We went in to library, which is on three different levels. There weren't many students at university as it is exam time and many exams were being held on the day. We had to be quiet when walking near the rooms where the exams were being held.

The university has its own golf course, cafeteria, amphitheatre and lots of gardens and a lake. We thought the university was very big, but we were told that we had only seen about a quarter of it!

At the end of the day, we all put on black capes and hats and graduated from university. That was cool as it usually takes people four years to graduate depending on the course. We were disappointed as we all wanted to throw our hats into the air but we were not allowed to as they are very expensive and can be damaged easily.

We thanked Kalinda and Belle for organising the day. Kalinda is a student teacher at our school and Belle has been a student teacher at our school. We also thanked the other students who volunteered to help us on the day.

We had a great day, and would recommend this day to other kids at our school if

they get the opportunity. I hope that our school gets the opportunity to do this again next year.

By Charlotte  
Mixed district netball

A couple of weeks ago schools from around the region competed in a round robin of netball games. The games were very exciting and all the girls who participated had so much fun.

The games went for about 16 minutes and the halves went for eight minutes. It was shorter than normal netball games but we were trying so hard that we were all tired between each halves and games.

The teams Hazelwood North played were Yinnar, Thorpdale, Boolarra, Churchill, Yinnar Mixed, Churchill Mixed and Lumen Christi. We won all six games except for the last one when we played the hardest team which was Lumen Christi. They won all seven games and defeated us by about 15 goals. They went into the next round of netball.

Lumen Christi was the hardest team and they weren't injured as bad as we were. There were a lot of experienced players on their team so that gave them a bit of an advantage. We brought a positive attitude to this game by trying our best and having fun.

The people who participated from Hazelwood North girls' team were Niki, Brydie, Charlotte, Georgia, Alison, Cheyenne, Chanel, Olivia, Evie, Alira and Chloe. There were a few injuries because of the asphalt courts, but we persevered through our pain and played on for the team. This round robin tested our collaboration skills and our resilience.

We'd like to thank our inexperienced players for trying super hard and striving to do their best for the team. We'd also like to thank our experienced players and our coach for teaching the

inexperienced players, it really made a difference! We have to say a HUGE thanks to our AMAZING coach Miss Stockdale for bringing out the best in herself and the team!

By Georgia, Charlotte and Alison

School football

On Friday June 3, Hazelwood North Grades 4/5/6 went to play school football at Yinnar. The different schools were: Lumen Christi, Yinnar, Churchill and Thorpdale/Boolarra. First we played Lumen Christi and we beat them by a goal and a couple of points. Then we played Churchill and had a comfortable win. After that we played Thorpdale/Boolarra, we came out with a win. Finally we played Yinnar, the reigning champs and lost by 7 points. We were into the Grand Final, it was exciting. Unfortunately we lost by a fair few points. The day was loads of fun though, whether we lost or won. It was fun meeting lots of other players and representing the school.

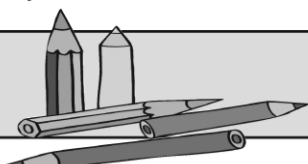
Alex and Lachlan  
School soccer

On Friday May 13, Hazelwood North primary school went to Traralgon to play school soccer. First we played Churchill and we beat them with a comfortable win of 7-0. We had hopes high to win the competition. Then we played Yinnar who won last year so we wanted some revenge and we succeeded! The game was a tight one, first we scored a goal then Yinnar scored one. In the last couple of minutes of the game we scored a spectacular goal! We won. Then we played Boolarra and won 2-0. Then we played Lumen Christi and won 2-0 also. We were undefeated.

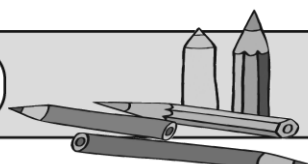
Dylan and Ethan



# School News



## Kurnai College Junior Campus



*Kurnai students assist local primary schools*

On Friday June 10, whilst most students were enjoying a day off from school, a number of Kurnai College Churchill Campus students actually attended and represented the campus by officiating at the Cluster Primary Schools football and netball sports.

The students volunteered to give up their time to support the primary students and their teachers in the sports held at the Yinnar Recreation Reserve. The

students who officiated were 'absolutely fantastic!!' The campus has also received a letter of appreciation from primary school student leaders thanking the students for their efforts. The students umpiring netball were Alysha Clarke, Bridie Kimpton, Chloe Franssen and Sophie Bellingham. Jayden McCormack, Cain Iorangi, Hayden Weir, Boyd Makepeace, Rhys Luxford, Hayden Dwyer, and Mitchell Bruerton were involved with umpiring the football

games. These students put in outstanding efforts and displayed great leadership on the day.

### Productions

On Thursday June 2, the Year 7 and 8 theatre classes presented three short original plays!

The students devised original works on themes of their own choice, and also designed the sets, lights and sound.

On June 9, the Year 9 drama class presented "Muriel's Wedding" as a

performance to end their semester of drama classes. This is a wild story of dreams and reality, how a young girl overcomes bullying to realise what is most important in life. Congratulations to all who were involved and in particular those who went beyond their normal comfort zone to ensure the performances were a success. Hannah Dal Pozzo as Muriel, Blade Dunn as Bill Heslop - the father, and Dakoda Jenkins as Rhonda, headed the cast.

Drama teacher, Kline, oversaw the productions, however it is the students who were the creators of the performances.

The students ran the sound and lights, organised the props, and adapted the scripts and choreography to enable the plays to be performed with the available cast and crew.

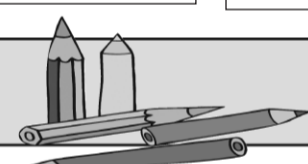
The audience of parents, peers and staff were greatly impressed by individuals as well as the overall performances.

On Monday June 20, the music department for Kurnai College put on a performance of the Kurnai music students at the Language Centre at Churchill Campus.

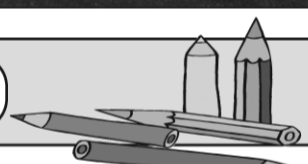
The evening showcased the skills developed by the students in a variety of bands, small and large groups, using a wide range of instruments. The performances included Year 7 beginners as well as the experienced VCE music students.



# School News



## Lumen Christi Primary School



Term 2 has come to a close and we certainly had plenty to celebrate, but sadly we said farewell to our Principal, Mrs Brewer. Jo has been asked to build a new school in Ballarat so left us in June to start the process of getting a school operational by February. Good Luck Jo and thanks for all you have done for us at Lumen Christi.

### Prep 2017

We have been very pleased with the number of families that have already enquired about joining our school community next year. We love every opportunity to sit and discuss our school with interested families and take them on a tour of our

beautiful facilities. Our 'Come-and-See' has proven to be very popular so we have offered further dates for Term 3. Also in Term 3 the PnF group fund a Book Week performance for our Prep to 4 students to attend, and we also extend that invitation to our Kinder families as well. Each Preschool would have received flyers about these events but feel free to ring the school for further details.

### Too many cooks

During the cold months people like to have hot fresh food. Recently Lumen Christi had a visit from the Catholic Education Office Warragul. A group of school students Jasmine, Kayley and Harry

from Grade 5/6 netball baked some cupcakes and cake for the CEO. The students were excited to cook for the visitors. The students had a blast cooking the food for the CEO. The CEO appreciated the children giving up their time to cook for them in this cold weather. Nothing is better than a cup of tea and a slice of cake.

### Footy fever

Recently this term students from Lumen Christi, a mixed team, participated in the Yinnar and District football competition. Unfortunately they weren't successful. They played four games and won two against Churchill Primary School and

Boolara/Thorpdale. We thank all schools who participated in this event and thank Yinnar for pulling off another great school sporting event.

### Netball success

Previously the Grade 5/6s played netball in term 2 with an all girls team. They successfully won all of their games at the Yinnar Football Club. The team made it into the next round. This will be held in term 3 at Traralgon. They played

against teams from Yinnar, Yinnar mixed, Boolarra, Thorpdale, Churchill Primary, Churchill Primary mixed and Hazelwood North.

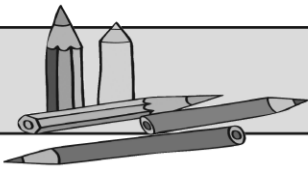
### Happy Teeth

Students at Lumen Christi were fortunate to be offered free dental screenings, courtesy of Latrobe Community Health Services. Many children experienced the on-site dental chair and individualised examination and education

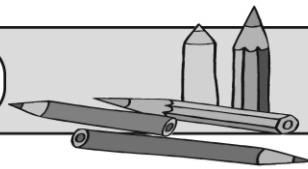
on how to best look after their teeth. Nicoletta and Roxley from the Dental Service also visited classes and presented important guidelines about oral health and hygiene practices. Students were informed that the dental service is free for children under 13. This activity was made available through our involvement with Healthy Together Latrobe and the component on Healthy Eating and Oral Health.



# School News



## Boolarra Primary School



### Yinnar and District Football / Netball Competition

Our netball team worked together to win three games. Our combined Thorpdale/Boolarra football team also teamed well and scored one victory. Both teams took on board feedback and showed great improvement in each successive game they played.

### Junior School Council News

\$82.70 was raised for SIDS research from the discos and jellybean competition that this industrious team organised. Corey of Grade 6 was the very happy winner of the jellybeans!

### School Council News

Our school vision

statement, motto, core values, letterhead and logo are being updated. Input is sought from our students, parents and staff. We are currently re-tendering our cleaning contract. Two of our parents are investigating the possibility of getting funding to improve our pool security.

### Brilliant Behaviour!

In term two our students earned two Bonus Recesses in recognition of their excellent behaviour in the playground.

### Fabulous Fundraising!

Our recent Pie Drive raised approximately \$790 which was a magnificent effort. Our next venture is a firewood raffle. 1st prize will

be a loaded trailer (size 8 x 5), with both 2nd and 3rd prizes being 6 x 4 trailer loads. The lucky winners will have the wood delivered and stacked if they live within 40 kms.

Tickets cost \$2 each or three for \$5 and are available from the school office, the Boolarra General Store or Post Office. We are raising funds for new play-ground equipment.

### End of Term Out of Uniform Day

Everyone was invited to dress in bright coloured clothes with crazy hair and bring a donation for Jean Quick, our local Wildlife Warrior. Including money

raised from Milo and Raisin toast sales during recess throughout the term, \$185 was raised.

### End of Term Assembly

In addition to the presentation of the usual awards, Ms Finley Smith shared a video that highlighted the P/1's learning from their recent project interviewing their Grandparents.

### Coal Creek Excursion

To conclude their History unit, the P/1/2's enjoyed an excursion to Coal Creek. They all had a wonderful time exploring what it was like in bygone days.

### Building our Students' Learning Powers and

### Resilience

Perseverance is the attitude we will be focussing on from Prep to Grade 6 for the first part of term 3.

### Spelling Bees

At our whole school assemblies on Monday our students from P-6 will be encouraged to participate in spelling competitions to showcase and improve their skills in this area.

### Our School Captains' reflections on Term 2

The visiting magician put on a great show; we found it quite humorous.

The 3-6's ran in the cross country and we were really impressed with how many

students went on to compete at the next level. We started a radio broadcast at lunch-time.

We had a bit of trouble trying to hook up the music as we were using our iPad's. In the end we used the microphone for announcements.

It wasn't a great success so we haven't tried again..... yet!

Mrs Emond took us to a reconciliation day ceremony out the front of Latrobe City Council.

Cora-Lynn and her mum, Anne-Maree were there as well. In the art gallery a lady read her book to us. We really enjoyed that day.



Crazy Hair days  
Left: Aleeah, Mia and Kirra Right: Bella Aleeash, Carly and Lana  
Learning about the olden days at Coal Creek  
Left: Georgia and Ella. Right: Georgia, Kirra, Brendan and Cooper  
Bottom:  
Limbo fun and Statues Ruby, Aleeash and Lana at the scholl disco

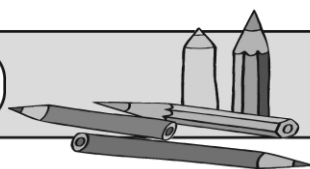
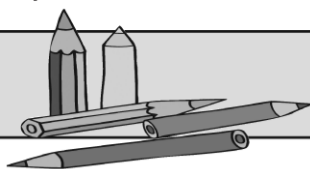


Russell Northe proudly servicing the Churchill and District Community.



### Russell Northe MLA

Member for Morwell  
russell.northe@parliament.vic.gov.au www.russellnorthe.com.au  
66 George Street, Morwell VIC 3840 PO Box 214, Morwell VIC 3840  
ph 03 5133 9088 fax 03 5133 9388  
Authorised by Russell Northe, 66 George St, Morwell VIC 3840  
Funded from the Parliament Electorate Office and Communication Budget



### High quality professional development for Churchill cluster schools

All teachers from Boolarra, Churchill, Churchill North, Hazelwood North, Yinnar, Yinnar South Primary Schools and Kurnai College Churchill continue to meet professionally twice a term, the focus for teacher development being to improve the attitudes, skills and knowledge of students through the collaboration of the cluster. The venue for each meeting is rotated between schools as a means of showcasing the high quality work and exceptional class environments within the Churchill Cluster of Schools.

All schools are led by a design team which is made up of leading teachers from each cluster school. The design team is responsible for the planning and delivery of high level professional

development. Feedback from cluster staff has indicated that they enjoy the opportunity to share ideas and work with staff across schools. Staff at Churchill North Primary School have commented on their involvement within the cluster as a fantastic opportunity to share knowledge and see common threads across schools.

Debbie Edwards

Principal Churchill North Primary School

**Water Presentation**  
On Thursday May 12, Natalie and Kirsty from Gippsland Water came to our school to teach all the grades about water. We learnt how water helps your body and how to tell if you are dehydrated. We participated in an activity to better understand healthy choices and non-healthy choices, because some people are fooled as there can be a lot of sugar in food and drinks. Students had to order drinks

from the sugariest to the least sugariest. As a result, Big M was the sugariest and water was the least. We were even lucky enough to receive a drink bottle for every student to help us drink more water. Water is a very important part of our lives and we need it to be healthy and survive. Thank you Gippsland Water!

By Alma

**Bug Blitz Day**

On May 18, 2016, Churchill North and a couple of other schools such as Lumen Christi went to Federation University for a Bug Blitz Day. They were split into groups and went to all sorts of activities.

Some activities were bug finding, performing pollution, crafting animals and water testing.

It was a fantastic day because the sun was shining. At recess and lunch it was great to see all the schools getting along.

### By Tayeisha 5/6P Family Health Program

A new partnership was launched earlier this week between Churchill North Primary School and Medical and Aged Care Group (MAACG); the partnership was established as a result of Medical and Aged Care Group's Medical Division's desire to pay forward to the community that has served it so well. MAACG has ownership of four Medical Clinics in the Latrobe Valley, one being Hazelwood Health Centre, Churchill, hence the partnership being established with Churchill North Primary. The success of these Clinics has motivated MAACG to be part of a major health initiative as a means of giving something back to the community which has served them for the past twenty years.

To launch this partnership, parents attended a presentation on how to

detect, treat and manage head lice. This was delivered by Julie Reggardo and Sharon Axten, teachers from Churchill North Primary. The school was thrilled with the response of parents, with 20 families supporting the launch and enjoying a cuppa and chat afterwards. All parents in attendance were given a free gift bag with head lice solution, comb and supportive information which was kindly donated by MAACG and MOOVE. Further health education presentations will be delivered to the school community based on the current needs and interests of families.

Julie Bannister and Cheryl Cook, managers within Medical and Aged Care Group, were in attendance and were impressed by the number of parents who attended the very informative presentation.

**Netball Victoria Clinic**

On Thursday June 9, we

had a local netball player come in. She taught the 3-6s some netball skills. One or two students won a prize of a Netball Victoria stationary set or a pencil case in a game of Tail Tag with netball bibs. In one game we learnt how to shoot and throw a netball and in the other we learnt the rules to netball.

It was an amazing day, I might take netball up.

By Ebony Webb

**Natalie at School Council**

Natalie was very proud to be present at Churchill North Primary School Council meeting on Tuesday evening. Natalie is one of 16 students from the school making up the Junior School Council. She is in Grade 1/2. Natalie shared information about what the Junior School Council has achieved this year, as well as coming events such as icy-poles for sale every Tuesday. Well done Natalee!

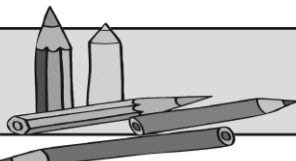


Top:  
Teachers sharing their expertise

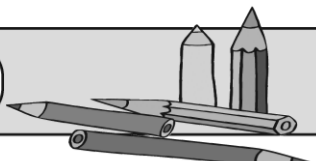
Bug Blitz  
Left  
Students learning about the effects of pollution of marine life.  
Right  
Max, Dom and Bailey analysing lake water  
Left  
Natalee presenting at school council.  
Right  
Ebony Webb with her netball award



# School News



## Churchill Primary School



### Respectful Positive Learners Day Launch

What a fabulous day we had towards the end of the term, celebrating the official launch of our Respectful Positive Learners (RPL) matrix. Our students and staff enjoyed a variety of activities in cross aged groups and the entire school was filled with smiling faces.

Our RPL team led by our students came up with the idea of the day to help celebrate what being a Respectful Positive Learner means at Churchill Primary School. By everyone learning together, sharing and bringing a positive attitude whilst having a go at all activities, it made for a day of laughter and cooperation. Because of the overwhelming success of the day, the RPL student team have decided they will run a similar day for all every term!

“My favourite thing was making a cup tower with rubber bands” - Chayce

“I like to swap classes. The best thing was making a tower out of cups” - Taneesha

“My favourite thing was making a talking puppet” – Natalie

Our RPL Student Leaders had a photo taken with Olympic Cyclist Shannon McCurley who was a special guest speaker on the day. She spoke to the school community about perseverance, being the best you possibly can and how much training she has done over the past 15 years to be ready for the upcoming Olympics in Rio. It was very inspiring to have Shannon with us and she has even promised to come back to speak to us about her experience as an Olympic athlete when she returns from Rio in a few months.

Our wonderful student leaders who played a big role in the organisation and running of the day, wish to thank the parents and grandparents who came along and joined in and also to Carly, Lisa, Allana and Jacob who cooked up a storm on the BBQ for the sausage sizzle.

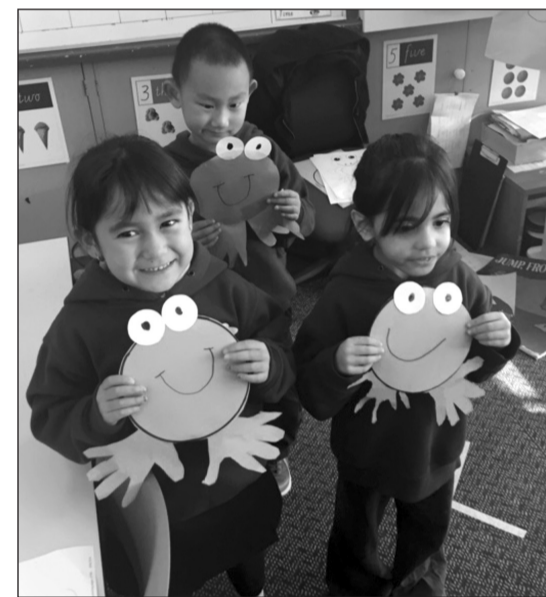
Lastly to our teachers, you are the best for facilitating wonderful fun activities for everyone to enjoy and agreeing to have it all happen again, every term!

### Run Baby Run!

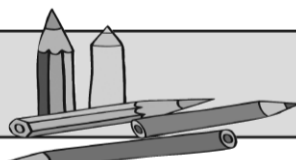
On Thursday June 16th, two students from Churchill Primary School ran in the Regional Finals of Cross Country at Lardner Park in Warragul. Congratulations to both Hayley Kamphuis and Teshawn Harrison who made it through both school and division cross country events to get to this level of competition. We know that both Hayley and Teshawn gave everything they had on the day and were wonderful representatives for the school. Well done to them both!

Extra big congratulations to Hayley who came 8th in her age group and qualified to go through to the state finals to be held at Bundoora later in the year. Such an amazing effort!

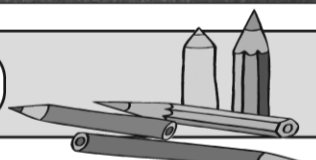
Hayley has improved on her performance every year for the past three years and as we know at Churchill Primary School, just being your personal best is what we are all about. Regardless of the outcome for Hayley when she travels to Melbourne in a few months, we all know you'll do yourself and the school proud!



# School News



## Churchill Preschools



### Churchill Preschool

It was almost the end of another successful term for these lovely children when

I dropped in to say hello. I hear that they were fortunate to have Di Harding visit with her “Wiggly Worm”. She

encouraged the pre - schoolers to be involved in various dance, singing and drama activities using her wiggly

worm (Chinese dragon). It was great fun, I believe.

Around the room could be seen boomerangs on display

for Reconciliation Week and large paper weaving patterns. These children have been very busy.

Then some of the children wanted to show me their box – type guitars they had recently made. Each child knew how to hold their “guitar” and strum as I sang a few simple nursery rhyme songs for them.

### Glendonald Preschool

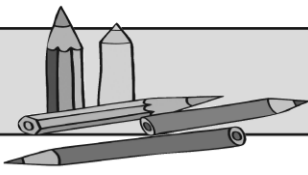
We were invited to produce a canvas art for the Latrobe Regional Gallery. They are holding an exhibition during July and August to celebrate National Aboriginal and Torres Strait Islander children’s day.

The theme for the art work is: My country, our country, we all belong.

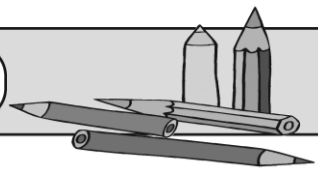
We taught the children about the creation story for Gippsland – Borun and Tuk. The children and teachers then looked at Aboriginal drawings and their meanings to come up with a design plan. We can’t wait to visit the gallery next term and see our artwork on display.



# School News



## Yinnar South Primary School



Yinnar South Primary School finished the term by celebrating International Mud Day. This term our whole school focus has been Environments and this event tied in beautifully. International Mud Day is a celebration that started in

2008 in Nepal and Australia, designed to connect people with nature. In Nepal, Mud Day marks the beginning of the rice-growing season.

Mud play has been connected with increased physical, social and emotional wellbeing while

also developing creativity and problem solving. Most of all, it was great fun.

Our Grade 3-5 students began the day presenting their research projects to the whole school. Topics ranged from explaining different Biomes through to international

environmental concerns such as poaching and the use of palm oil. We finished off the day with some serious mud play.

“We were really proud of the standard of the student’s educational research projects and the mud day was a fun

way to celebrate the end of our environment focus,” stated Principal Katy Grandin.

Yinnar South Primary has a focus on individualised education. Our students enjoy small class sizes and a high adult to student ratio. We teach through a ‘stages not

ages’ approach which means every student can be extended to achieve their personal best.

Prep 2017 enrolments have now opened. Why not visit the little school that brings Learning to Life? Enquiries: (03) 5169 1540.



# Monash Golf Club results



Churchill & Monash Golf Club Saturday 4/6/16

Mens Par A Grade 0-17  
R. Scurlock +3 (7), B Grade 18-25 G. Spowart +1 C/B (20), C Grade 26-36 Mahmoon +5 (27).

Ladies C. Sterrick +3, Dtl B. Rowley +3, D. Ellwood +1, A. Sharrock +1, J. Sloyen +1, I. Hepplestone Even, Fabian Even.

Ntp 3rd B. Kilday 12th C. Hogbin, Target Hole P. Williams.

Birdies 3rd B.Kilday, B. Barnes 3rd.

Ladies Tuesday 7/6/16 Monthly Medal

Winner Scratch M. Dear (15) 93, Monthly Medal Winner D. Judkins (26) 75, Dtl V. Verheyen (25) 78,

Putts L. Casey 26, Ntp, 5th and 14th M. Dear.

Saturday 11/6/16 Mens Stroke A Grade 0-18 T. Thornby Net 80 (14).

B Grade 19-36 B. Barnes Net 91 (34), Dtl J. Barnes 82, G. Beyer 83.

Target Hole G. Beyer, Birdies G. Beyer.

Ladies Tuesday 14/6/16 Foursomes.

Winners M. Dear (15), J. Armstrong.

Mens Stableford Saturday 18/6/16

A Grade D. Byers (17) 40

Pts, B Grade J. Sloyan (25) 35 Pts, C Grade I. Hepplestone (28) 37 C/B.

Dtl B. Rowley 37, C. Hogbin 36, Fabian 35, M Soppe 33, M Rennie 32, P Junker 32 C/B.

Ntp 3rd R. Scurlock, 12th Petee, 14th G. Beyer.

Birdies 3rd D. Byers, 14th G. Beyer.

Saturday 25/6/16 Mens Monthly Medal

A Grade P. Smart (9) 66 Nett.

B Grade J. Ambrosini (29) 76 Nett.

Dtl C. Hogbin 71, G. Beyer 75, D. Ellwood 77, C/B J. Barnes 77 C/B.

Ntp 14th R. Scurlock, Target Hole B. Barnes.

Birdies G. Beyer 12th, Scratch P. Smart 75.

Ladies Tuesday 28/6/16 American Foursomes

Winners M. Mc Conville (25), J. Armstrong (45) Hcp 26 ¼ Nett 88 6/8.

Dtl S. Jeffery (37), J. Beck (28) Hcp 24 3/8 Nett 89 5/8.



Yinnar Tigers premiership team: Mark Taylor, Sharon Taylor, Allan Larkin, Joe DeMaria, Peter Campbell (Captain), Reno Borg and Mike Bailey.

Mid Gippsland Darts Association finals results: 1st Semi Final: Coyotez defeated Jokers 5-3. A hard fought battle as the score indicates, saw Coyotez come out on top.

For the second year in a row they are into the Preliminary Final. Highest finish score of 86 and 73 went to Martin Menzies (Coyotez).

2nd Semi Final: Bullshot defeated Yinnar Tigers 5-2. Not the best opening shot of the finals for the Tigers as they seemed not to have brought their A game. Honours for the

game went to Bullshot players Scott Smith and Warrick Roberts.

Scott had a highest score 180 and two highest finishes, while Warrick had his own highest score of 180 for the night.

Preliminary Final: Yinnar Tigers vs Coyotez. If the Tigers left their A game at home in the semis, they made up for it in this preliminary final. Mark Taylor (Tigers) had two highest scores of 140 and Peter Campbell (Tigers) chipped in with his own 140.

Mark also had highest finish 111, and Reno Borg also had a highest finish of 104.

Tigers to meet their nemesis team Bullshot in the Grand Final.

Grand Final: It was neck and neck in the best of nine games in this contested Grand Final. Bullshot were down a major player in Warrick Roberts due to illness.

Yinnar Tigers started well winning the first game. Bullshot had their own victory and then Tigers winning two more.

Coming to the fifth game the score stood at 3-1 in favour of the Tigers. Tigers won the next game but then hit a bad patch losing the next three. Coming to the 9th and last game the Tigers had to win to stave off the fast finishing Bullshot team. Yinnar Tigers 5 defeated Bullshot 4. Highest Score; 140 – Reno Borg and Mark Taylor. Highest Finish: 72 - Reno Borg.

The Yinnar Tigers team thanks Trevor and the team at Yinnar Community Hotel for their support.

## Bowls club greens nearing completion



Construction works on the new Churchill bowls green at Gaskin Park have been restricted over the past month due to inclement weather conditions, however it is anticipated the green will be ready for use in early August 2016. The perimeter fence has now been completed, leaving only the synthetic green to be laid and some landscaping works to be carried out.

The clubroom renovations are nearing completion, with only the kitchen bench tops and floor coverings to be finished.

Once the green is operational, the club intends to conduct and promote come and try days, which will provide an opportunity for the Churchill and district

communities, to participate in bowls activities with coaching available.

The Churchill ladies indoor bowls team results - **Churchill Black**

May 2, Churchill Black def Moe 35 - 15.

May 9, Churchill Black def Yinnar 21 - 13.

May 16, Churchill Black def Yallourn North 25 - 15.

May 23, Churchill Black lost to Morwell Gold 27 - 28.

May 30, Churchill Black def Moe R.S.L Pinks 32 - 13.

June 6, Churchill Black def Moe Mauve 36 - 12 .

June 20, Churchill Black drew with Yinnar 17 -17.

**Churchill White**

May 2, Churchill White lost to Moe Pink 16 - 20

May 9, Churchill White

def Morwell Purple 26 - 18.

May 16, Churchill White drew with Yallourn North Red 22 - 22.

May 23, Churchill White def Morwell Blue 29 - 20.

May 30, Churchill White lost to Moe Tan R.S.L 17 - 31.

June 6, Churchill White lost to Moe Pink 13 - 24.

June 20, Churchill White lost to Morwell Purple 23 - 24.

Churchill Black is on top of the ladder with Churchill White middle of the ladder.

The Indoor tournaments commence on July 7 and July 28 respectively.

The Mens Winter Lawn Bowls Competition held at Traralgon is mid way through the season, with Churchill sitting in the middle of the

ladder. The team has been playing some good bowls and we believe with a little luck we can make the finals and provide some stiff competition for the other final four teams.

Anyone wishing to play indoor bowls on a Thursday night is cordially invited, just turn up on a Thursday night by 7.00pm.

Games start at 7.15pm sharp. Cost for the night is \$4.00, which includes a light supper. So come along and enjoy a fun and sociable night out.

We are currently seeking new, past and current players, interested in joining and being part of the Churchill Bowls Club. If interested contact W. Brown on 5122 1860.



Annual  
General Meeting  
Thursday, August 11, 2016  
at 7.30pm  
at Clubhouse, Manning Drive

The Annual General Meeting will be held on Thursday, August 11, at 7.30pm and current and prospective members are invited to attend.

In addition to election of office bearers, discussion will be held on the forthcoming tennis season and number of teams to be entered in both senior and junior competition. If you are unable to attend the meeting but would like to enquire about playing competition, please phone: Juniors - Sally Kirstine 0403 282 630, Seniors - Carol Scott 5183 6168.

The Club also has a Social Membership and enquiries can be made to Carol on 5183 6168. Social tennis is held on a Monday at 1pm (varied in summer months) - enquiries again to Carol. Play is just organized on the day for those who can attend - if you have previously played and would like to enjoy tennis again, give Carol a call.

For any enquiries regarding coaching, you can contact Sally Kirstine on 0403 282 630.

KEEP FIT - PLAY TENNIS

Elaine Andrijczak  
Secretary

**WE DISCOUNT EVERY SCRIPT EVERYDAY!!**

Stop Paying Too Much!!

**CHEMIST  
WAREHOUSE**

**DISCOUNT  
CHEMIST**

**THE BUCK STOPS WITH**



**WE'RE PROUD TO PASS ON THE FULL DISCOUNT ON PBS SUBSIDISED SCRIPTS**

**2016 CO-PAYMENT PRESCRIPTION PRICES**

**2016 CONCESSION PATIENTS**

**NORMAL PRICE: \$6.20<sup>†</sup>**

**OUR PRICE: \$5.20<sup>†</sup>**

**GENERAL PATIENTS**

**NORMAL PRICE: \$38.30<sup>†</sup>**

**OUR PRICE: \$37.30<sup>†</sup>**

**UP TO 50% OFF ALL OTHER PRESCRIPTIONS**

<sup>†</sup>Excludes Brand Price Premium



**NEW  
LOW  
PRICE**

**PRESCRIPTIONS**

**DISCOUNTED EVERYDAY!**

**ALL  
\$5.20  
EACH**

DESCRIPTION	PRICE	DESCRIPTION	PRICE	DESCRIPTION	PRICE
ALLOPURINOL SZ 300MG TAB 60	\$5.20	CEFALEXIN SZ 250MG CAP 20	\$5.20	NORVASC GENERIC (AMLODIPINE SZ) TAB 10MG 30	\$5.20
ALODORM TAB 5MG 25	\$5.20	CEFALEXIN SZ 500MG CAP 20	\$5.20	PANAFCORTELONE TAB 5MG 60	\$5.20
ALPRIM TAB 300MG 7	\$5.20	CEFALEXIN SZ 125MG/5ML PDR 100ML	\$5.20	PRAMIN TAB 10MG 25	\$5.20
AMARYL GENERIC (GLIMPERAMIDE SZ) TAB 1MG 30	\$5.20	CEFALEXIN SZ 250MG/5ML PDR 100ML	\$5.20	PRAVACHOL GENERIC (PRAVASTATIN SZ) TAB 10MG 30	\$5.20
AMARYL GENERIC (GLIMPERAMIDE SZ) TAB 2MG 30	\$5.20	CITALOPRAM SZ 20MG TAB 28	\$5.20	PRAVACHOL GENERIC (PRAVASTATIN SZ) TAB 20MG 30	\$5.20
AMARYL GENERIC (GLIMPERAMIDE SZ) TAB 3MG 30	\$5.20	COMFAROL FORTE 500/30MG TAB 20	\$5.20	RULIDE GENERIC (ROXITHROMYCIN) 150MG TAB 10	\$5.20
AMOXYCILLIN SZ CAP 250MG 20	\$5.20	CORTIC DS CREAM 1% 50G	\$5.20	RULIDE GENERIC (ROXITHROMYCIN) 300MG TAB 5	\$5.20
AMOXYCILLIN SZ CAP 500MG 20	\$5.20	CORTIC DS OINT 1% 50G	\$5.20	SIMVASTATIN SZ 5MG TAB 30	\$5.20
AMOXYCILLIN SZ SYR 125MG/5ML 100ML	\$5.20	COVERSYL GENERIC (IDAPREX) 2MG 30	\$5.20	SIMVASTATIN SZ 10MG TAB 30	\$5.20
AMOXYCILLIN SZ SYR 250MG/5ML 100ML	\$5.20	DOLAPRIL 0.5MG CAP 28	\$5.20	SIMVASTATIN SZ 20MG TAB 30	\$5.20
AMOXYCILLIN SNDZ TAB 1000MG 14	\$5.20	DOXYCYCLINE SZ TAB 100MG 7	\$5.20	SOMAC GENERIC (PANTOPRAZOLE SZ) TAB 20MG 30	\$5.20
ATENOLOL SZ 50MG TAB 30	\$5.20	ENALAPRIL SZ 5MG TAB 30	\$5.20	STEMETIL GENERIC (PROCALM) TAB 5MG 25	\$5.20
ATORVASTATIN SANDOZ 10MG TABLETS 30	\$5.20	FLAGYL GENERIC (METROGYL) TAB 200MG 21	\$5.20	TEMTABS TAB 10MG 25	\$5.20
ATORVASTATIN SANDOZ 20MG TABLETS 30	\$5.20	FRUSEMIDE SZ 40MG TAB 100	\$5.20	TRAMADOL SZ 50MG CAP 20	\$5.20
AUGMENTIN GENERIC (CURAM) TAB DUO 500MG 10	\$5.20	LEXAPRO GENERIC (ESITALO) TAB 10MG 28	\$5.20	TRAMADOL SR 100MG TAB 20	\$5.20
AUGMENTIN GENERIC (CURAM) TAB DUO FORTE 10	\$5.20	LEXAPRO GENERIC (ESITALO) TAB 20MG 28	\$5.20	TRITACE GENERIC (RAMIPRIL SZ) TAB 1.25MG 30	\$5.20
AUGMENTIN GENERIC (CURAM) SYR 125MG+31.25MG/5ML	\$5.20	LOFENOXAL TAB 2.5MG 20	\$5.20	TRITACE GENERIC (RAMIPRIL SZ) TAB 2.5MG 30	\$5.20
AUGMENTIN GENERIC (CURAM) SYR DUO 400MG 60ML	\$5.20	MELoxicAM SZ 7.5MG TAB 30	\$5.20	TRITACE GENERIC (RAMIPRIL SZ) TAB 5MG 30	\$5.20
AVAPRO GENERIC (IRBESARTAN) TAB 75MG 30	\$5.20	MICARDIS GENERIC (TELMISARTAN) TAB 40MG 28	\$5.20	UREX M 20MG TAB 50X2	\$5.20
AVAPRO GENERIC (IRBESARTAN) TAB 150MG 30	\$5.20	MICARDIS PLUS GENERIC (TELMISARTAN HCT) TAB 40/12.5MG 28	\$5.20	VALIUM GENERIC (VALPAM) TAB 2MG 50	\$5.20
BETALOC GENERIC (METOPROLOL SANDOZ) TAB 50MG 100	\$5.20	MOTILIMUM TAB 10MG 25	\$5.20	VALIUM GENERIC (VALPAM) TAB 5MG 50	\$5.20
BETALOC GENERIC (METOPROLOL SANDOZ) TAB 100MG 60	\$5.20	MURELAX TAB 30MG 25	\$5.20	VALIUM GENERIC (VALPAM) TAB 5MG 50 BOTTLE	\$5.20
CANDESARTAN SZ TAB 4MG 30	\$5.20	NORVASC GENERIC (AMLODIPINE SZ) TAB 5MG 30	\$5.20	ZOLOFT GENERIC (SERTRALINE) TAB 50MG 30	\$5.20
				ZOLOFT GENERIC (SERTRALINE SZ) TAB 100MG 30	\$5.20

**SALE 5144 2338**

**278 RAYMOND STREET**

**MON - FRI: 8.30AM - 8PM  
SAT: 9AM - 6PM  
SUN & PUBLIC HOLIDAYS: 10AM - 4PM**

PROPRIETORS: MARIO TASCONE, RAMI SALEH & ANDREW ROWAS

**BAIRNSDALE 5152 1422**

**458 MAIN STREET**

**MON - FRI: 8AM - 8PM  
SAT - SUN: 9AM - 6PM  
PUBLIC HOLIDAYS: 10AM - 5PM**

PROPRIETORS: DAMEN GANCE, ANDREW ROWAS & RAMI SALEH

**TRARALGON 5174 2003**

**92 FRANKLIN STREET**

**MON - FRI: 8AM - 9PM  
SAT - SUN: 8AM - 6PM  
PUBLIC HOLIDAYS: 8AM - 6PM**

PROPRIETORS: ALISON TASCONE, RAMI SALEH & ANDREW ROWAS

**MORWELL 5133 0249**

**2 MONASH HIGHWAY**

**MON - FRI: 8.30AM - 9PM  
SAT: 9AM - 5.30PM  
SUN: 10AM - 5PM**

PROPRIETORS: SUNIL NARULA, RAMI SALEH & ANDREW ROWAS