

Churchill Self Storage

THREE SIZES:

- 3m x 3m
- 3m x 4.5m
- 3m x 6m

66 Switchback Road

*Situated at corner of
Switchback Rd &
McCormick St, Churchill*

Secure access via Electric Gate and Your Padlock

Phone 03 5134 2790

Contact:

B. J Bennett & Co. REAL ESTATE PTY LTD
219 COMMERCIAL RD, MORWELL



Addition to our Community Health Centre



At the recent CDCA Forum, guest speaker Ben Leigh, CEO of Latrobe Community Health Service (LCHS) outlined the proposed extension of Churchill Community Health Centre to include a dental prosthesis laboratory.

The current service will remain. The doctor's rooms have been upgraded, and there is the possibility to accommodate a second doctor on site.

The Board of LCHS is committed to continuing services here in Churchill and taking advantage of other opportunities that present themselves. A lot of work is happening in Churchill at present and LCHS believes the proposed building extension will add value to the town centre plan.

One example of a current opportunity is the beginning of a relationship with Federation University students, lecturers and staff who need good health services right on their doorstep. Another is creating real life experiences for medical students and

providing allied health benefits. It is also hoped that FedUni will continue to expand its nursing school, which will be good for Churchill.

A consortium of public health services for Gippsland has been established, which will use the dental prosthesis laboratory's products. This will provide a quicker service, and may mean people no longer have to go to Melbourne for this service.

The new addition will be a two-storey building with twelve prosthetic benches.

It will produce false teeth dentures, provide office space, meeting and training rooms and a car park area. This new facility will provide jobs while under construction and then jobs for those employed in the facility.

Some funding has been acquired at this point, but more is needed. It is hoped though that this can be obtained so the new facility can be started in 2015-Churchill's 50th year

New Churchill Motors

Lot 8 Phillip Parade,
Churchill, Vic. 3840.
Tel. (03) 51221380



Specializing in General repairs and Servicing of 4WD and Passenger Vehicles Including:-

Brake and Clutch Machining & Replacement

* Cylinder head and Flywheel machining

* Steering and Suspension repairs

* Tyre fitting and balancing

* Log book servicing and general repairs

*Specialist Diagnostic equipment for current models

Present Your Student Card For a 10% Discount on Parts & Labour.



All repairs covered by Repco Authorized Service Nationwide Warranty.



2014/15 Churchill Businesses Christmas Trading Hours

CHURCHILL & DISTRICT NEWS

Advantage Pharmacy

Christmas Eve 8.30 am – 6.00 pm
Christmas Day Closed
Boxing Day 9.00 am - 1.00 pm
New Year's Eve 8.30 am – 6.00 pm
New Year's Day Closed.

Anne's Café & Bar

Christmas Eve Closed
Christmas Day Closed
Boxing Day Closed
Sunday, December 28, Closed
New Year's Day Closed

Churchill BBQ Chicken

Open Christmas Eve and Christmas Day.
All other times displayed on shop window.

Churchill Business Centre

Christmas Day Closed
Boxing Day Closed
New Year's Day Closed.

Churchill Chinese

Christmas Day Closed

Churchill Fish & Chip Shop

Normal hours 11.00 am - 8.30 pm
Christmas Eve 11.00 am - 8.00 pm
Christmas Day Closed
Re-open Friday, January 2.

Future Flicks

December 23 – 10.30 am – 8.30 pm.
Christmas Eve 10.30 am – 8.30 pm.
Christmas Day Closed
Boxing Day 10.30 am – 9.00 pm
December 27 - 10.30 am – 9.00 pm
December 28 - 10.30 am – 8.30 pm.

Churchill Hot Bread Bakery

Closed 4.00 pm Christmas Eve
Christmas Day Closed
Boxing Day Closed
Re-open Monday, December 29
New Year's Day Closed.

Churchill KFC

Christmas Eve till 10.00 pm
Christmas Day Closed
Boxing Day 10.00 am – 10.00 pm
New Year's Eve 10.00 am – 9.00 pm
New Year's Day 10.00 am – 10.00 pm.

Churchill Laundromat

Christmas Eve Closed
Christmas Day Closed
Boxing Day Closed
Saturday, December 27, Closed
New Year's Eve Closed
New Year's Day Closed
Limited hours between Christmas and New Year.
Enquiries Phone 5122 1600

Churchill Neighbourhood Centre

Closed Friday, December 19.
Re-open Monday, January 12.

Churchill Newsagency

Christmas Day Closed
Boxing Day Closed
New Year's Day Closed.

Churchill Noodle Bar

Closed Sunday, December 21
to Monday, January 5.

Churchill Post Office

Christmas Day Closed
Boxing Day Closed
New Year's Day Closed.

Commonwealth Bank Churchill

Christmas Day Closed
Boxing Day Closed
New Year's Day Closed.

Dainbridge Financial Services

Closed Wednesday, December 17
Re-open Monday, January 12.

Hazelwood Health Centre

Wednesday, December 24
8.00 am – 5.30 pm
Christmas Day Closed
Boxing Day Closed
Saturday, December 27
8.30 am - 1.30 pm
New Year's Eve
8.00 am - 5.30 pm
New Year's Day Closed

Kats Hair Design

Monday, December 22, 10.00 - 2.00 pm
Tuesday, December 23, 10.00 am - 6.00 pm
Christmas Eve 10.00 am - 3.00 pm
Christmas Day Closed until
Tuesday, December 30, 10.00 am - 2.00 pm
New Year's Eve 10.00 am - 2.00 pm
New Year's Day Closed till Monday, January 5.

Lifeline Op Shop

Closed 12 noon Friday, December 19
Re-open 9.30am Monday, January 12.

Ritchie's IGA Churchill

Christmas Eve 8.00 am - 8.00 pm
Christmas Day Closed
Boxing Day 9.00 am – 7.00 pm
New Year's Eve 8.00 am - 8.00 pm
New Year's Day 9.00 am – 7.00 pm

All other days open as normal.
8.00 am – 8.00 pm Monday to Saturday
9.00 am to 7.00 pm Sunday.

Smart Saver

Christmas Eve 9.00 am – 6.00 pm
Christmas Day Closed
Boxing Day 11.00 am - 4.00 pm
New Year's Eve 9.00 am - 6.00 pm
New Year's Day Closed.

The Barber Shed

Monday, December 22, 9.00am - 5.00 pm
Tuesday, December 23, 9.00 - 5.00 pm
Christmas Eve 9.00 am - 3.00 pm
Re-open Monday, January 5.

Woolworths Supermarket

Christmas Eve 7.00 am – 9.30 pm
Christmas Day Closed
Boxing Day 9.00 am – 8.00 pm
New Year's Eve 7.00 am – 9.30 pm
New Year's Day 9.00 am – 8.00 pm
7.00 am – 9.30 pm from there onwards.

Zaniti Hair

Closed Christmas Day
Re-opening Tuesday, January 6

Churchill Lions Club - Australia Day Awards



On Australia Day 2005, Churchill Lions Club had the honour of bestowing upon Ruth Place of Churchill, our inaugural Churchill Australia Day Citizen of the year, in recognition of her tireless and devoted service to the citizens of the Churchill community.

On Australia Day every year since, Churchill Lions Club has had the privilege of bestowing upon further individuals the honour of being recognised as our Churchill Citizen of the Year for their tireless efforts to assist the Churchill community itself, who go the extra yard to assist our citizens in extremely wide and diverse fields, to ensure the needs of all individuals are met.

Since that time the Churchill Lions Club has chosen also to make available an award for individual School Citizen of the Year, which acknowledges the excellence of our young citizens throughout the year, along with the provision of similar awards that are presented to students of the local and surrounding primary schools, who likewise make the extra effort to support and assist others by whatever means.

To assist the Churchill Lions to locate prospective members of our community who, like all of the above, make the extra effort to put others first, volunteer for everything, we request that you nominate them by completing the nomination form on page 24, for Citizen of the Year and return

it to Churchill Lions Club P.O 110 Churchill 3842 or to contact Bob Lowick on 0408 377 781.

The Australia Day Awards will be held

in the carpark of the Churchill Hotel, on Monday January 26, at 7.30am.

Everyone Welcome!

Come and share the celebrations!



THE Ultimate Ride-On BRUSH CUTTER

"SEEING IS BELIEVING"

Unique blade system

With the ability to perform in conditions that will destroy normal mowing equipment, the Razorback is the perfect machine to create and maintain your fire-breaks.

- Powers through thick brush & heavy vegetation with ease due to shaft drive deck
- Positive traction diff-locks
- 4 models available: CM1401, CMX1402, CMX186 and CMX227

4WD + Low Centre of Gravity = SUPERB STABILITY ON SLOPES





30°
SLOPES
CE Certified

Book a demonstration today = SEEING IS BELIEVING!

Central Gippsland Mowers Ph: 03 5134 8899
W: www.therazorback.com.au

Churchill Hub

Opening and closing times for the Christmas and New Year period

COUNCIL SERVICE CENTRES AND LIBRARIES

will close at **12 noon** on **Wednesday 24 December, 2014** and reopen at **11.00 am** on **Friday 2 January, 2015**

CHURCHILL HUB PRESCHOOL

will close on **Friday 19 December, 2014** and reopen on **Wednesday 28 January, 2015.**

CHURCHILL NEIGHBOURHOOD CENTRE

will close on **Friday 19 December, 2014** and reopen on **Monday 19 January, 2015.**

MATERNAL AND CHILD HEALTH SERVICES

will close **12 noon** on **Wednesday 24 December, 2014** and reopen at **10.30 am** on **Friday 2 January, 2014.**

POOH CORNER CHILDCARE CENTRE

will close from **6.30 pm** on **Monday 22 December, 2014** and reopen at **6.30 am** on **Monday 12 January, 2015.**

During this period, Churchill MCH clients can ring the central booking line on 5128 6128 or 0409 141 169 for appointments or home visits on **Monday 29 December** and **Tuesday 31 December, 2014.**

PHONE 1300 367 700
 ADDRESS 141 Commercial Road, Morwell
 WEB www.latrobe.vic.gov.au
 FACEBOOK Latrobe City Council



POOH CORNER CHILD CARE

Call (03) 51226227 to make an inspection appointment

- Open from 6.30am to 6.30pm.
- Fully qualified, caring, attentive staff.
- Full time, part time or occasional care for 0-5 years.
- Educational curriculum that fosters and enhances children's development.
- Providing care for the Latrobe Valley & Monash community for over 30 years



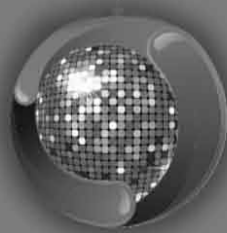
Pooh Corner
 Child Care Centre
 EST. 1980



Churchill Hub
 Philip Parade, Churchill
 Web: mugsu.org.au

This month at MUGSU...

The team here at MUGSU would like to wish everybody a safe and enjoyable Christmas. We have been working hard to help ensure 2015 is a year to remember not only for the student body but the greater community in general as Churchill celebrates it's 50th birthday. Merry Christmas!



Keeping the Student Union jiving at the Gippsland Campus for over 40 years!

#2014 #successfulyear #happyholidays
 #2015 #growth #future #feduni





FIRE PREVENTION and YOU **during fire danger period**

Page 17 - About Fire Danger period
Page 18 - Can I, Can't I

Page 19 - Fire Danger Rating
Page 20 - Farm Fire Safety Checklist



About the Fire Danger Period

The Fire Danger Period is when CFA restricts the use of fire in the community. This is to help prevent fires from starting.

Who is affected

People living in country Victoria and the outer metropolitan suburbs of Melbourne - the Fire Danger Period takes affect by municipality.

When is it declared

CFA declares the Fire Danger Period for each municipality (shire or council) at different times in the lead up to the fire season. It depends on the amount of rain, grassland curing rate and other local conditions.

Churchill's Neighbourhood Safer Place

The Churchill Public Hall is currently closed as it is having renovations done to improve the general amenity of the facility. As a consequence of this closure, Latrobe City has advised that during the coming summer season the Churchill Public Hall **WILL NOT** be available for use as Churchill's Neighbourhood Safer Place.

Churchill and neighbouring community members should take account of this advice should your last resort plan have been to attend the Neighbourhood Safer Place in Churchill.

There are Neighbourhood Safer Places located at Boolarra (Boolarra Public Hall) and Yinnar (Yinnar Primary School). Further information on Neighbourhood Safer Places is available from the CFA Website at www.cfa.vic.gov.au/plan-prepare

The Fire Danger Period may be declared as early as October in some municipalities, and typically remains in place until the fire danger lessens, which could be as late as May.

For Latrobe City, Fire Restrictions came into force at 1:00 am on Monday December 8, 2014. Restrictions across the rest of Gippsland also came into force at 1:00 am on December 8, 2014.

Fire restrictions during the Fire Danger Period

Once the Fire Danger Period has been declared, fire restrictions come into force. This means you cannot light a fire in the open air unless you have a permit or comply with certain requirements.

If you don't obtain a permit, you could be breaking the law and may be prosecuted.

To find out more about what you can or can't do, refer to the 'Can I, Can't I' brochure available from CFA.

Other types of fire restrictions

- Local municipalities (councils or shires) may have their own local laws in relation to lighting fires. Contact your local council to find out what local laws may be in place. Note: The local laws may be in place 12 months of the year.

Burning off during the Fire Danger Period -

You need a permit to burn-off during the Fire Danger Period. You must also notify ESTA of your burn-off. Otherwise brigades might be called out unnecessarily.

Total Fire Ban days

Total Fire Bans are different to the Fire Danger Period.

A Total Fire Ban Day can be declared at any time throughout the year. No fires are to be lit in the open air on Total Fire Ban Days unless you have a special permit.



In an emergency TRIPLE ZERO - 000



FIRE PREVENTION and YOU during fire danger period

CAN I OR CAN'T I?

Updated September 2014

This information provides general guidance as to what you can and can't do during declared Fire Danger Periods, and on days of Total Fire Ban, when fires in the open air are legally restricted.

CFA declares Fire Danger Periods municipality by municipality during periods of increased fire risk. Refer to the CFA website cfa.vic.gov.au for further details about your location. In State forests, National, State and Regional Parks and on protected public land, fire restrictions are in force all year round. Contact local DEPI

and Parks Victoria offices for advice on fire restrictions for these areas.

Total Fire Bans are declared by CFA on days when fires are likely to spread rapidly and be difficult to control.

The penalties for lighting fires illegally during the Fire Danger Period and on Total Fire Ban Days include large fines and possible imprisonment.

Can I have a barbecue, light a campfire or light a fire for warmth or comfort?

During Fire Danger Period

YES

But only if:

The wind is not more than 10 kph (this can be observed if leaves and small twigs are in constant motion)

The fire is lit in a properly constructed fireplace or in a trench at least 30 centimetres deep

The area within a distance of 3 metres from the outer perimeter of the barbecue is clear of flammable material

The fire does not occupy an area in excess of 1 square metre and the size and dimensions of solid fuel used are the minimum necessary for the purpose

A person is in attendance at all times while the fire is alight and has the capacity and means to extinguish the fire

The fire is completely extinguished before the person leaves.

Note that in accordance with the CFA Act, a "properly constructed fireplace" means a fireplace that is constructed of stone, metal, concrete or any other non-flammable material so as to contain the perimeter of the fire. A commercially produced barbecue would be considered a properly constructed fireplace.

On Total Fire Ban Days

YES

Barbecues that are:

fired by gas or electricity, being permanently fixed structures built of stone, metal, concrete or another non-flammable material designed exclusively for meal preparation, or

that use only gas or electricity, are designed and commercially manufactured exclusively for meal preparation (including portable barbecues), and when alight are placed in a stable position, **provided that:**

the area within a distance of 3 metres from the outer perimeter of the barbecue is clear of flammable material

you have either a hose connected to a water supply or a container with at least 10 litres of water for immediate use

an adult is there at all times when the fire is alight who has the capacity and means to extinguish the fire

the fire is completely extinguished before the adult leaves.

NO

Campfires, fires for warmth or personal comfort are banned during Total Fire Ban Days. Solid and liquid fuel barbecues and ovens are also banned during Total Fire Ban Days

I run a meal preparation business (eg. catering), or am a community/charitable/fundraising or similar organisation.

Can I set up and light a fire to operate a barbecue, cooker, hotplate or a spit at outdoor functions?

During Fire Danger Period

YES

But only if:

The wind is not more than 10 kph (this can be observed if leaves and small twigs are in constant motion)

The fire is lit in a properly constructed fireplace or in a trench at least 30 centimetres deep

The area within a distance of 3 metres from the outer perimeter of the appliance (barbecue, cooker, hotplate or spit) is clear of flammable material

The fire does not occupy an area of more than 1 square metre and the size and dimensions of solid fuel used are the minimum necessary for the purpose

A person is in attendance at all times while the fire is alight and has the capacity and means to extinguish the fire

The fire is completely extinguished before the person leaves.

If you cannot meet these conditions you will

need to apply for a permit from a CFA District office.

On Total Fire Ban Days

YES

But only if you have a written permit issued by CFA or MFB and you comply with the conditions of that permit.

A community organisation, a charitable organisation or an organisation involved in fundraising (for example, a school or sporting group involved in fundraising) may apply for permission to light a fire to prepare meals for other people in the course of their business. These permits are issued by –

and at the discretion of – local CFA District offices, CFA Headquarters or MFB Zone offices.

Municipal Fire Prevention Officers cannot issue these permits.

Can I light a fire in the open air for burning off grass, stubble, weeds, undergrowth or other vegetation?

During Fire Danger Period

YES

But only if:

You have a written permit issued by a Municipal Fire Prevention Officer, by the CFA District office or by a Fire Prevention Officer of a public authority.

You comply with the conditions of that permit

A person is in attendance at all times while the fire is alight and has the capacity and means to extinguish the fire

The fire is completely extinguished before the person leaves.

Many councils have local laws that ban burning off on certain days, or within certain locations or at certain times within their municipalities. Check with the Municipal Fire Prevention Officer.

On Total Fire Ban Days

NO

All fires in the open air for burning off grass, scrub, stubble or rubbish are banned during Total Fire Ban Days. Any permits issued by Municipal Fire Prevention Officers are suspended for the duration of any Total Fire Ban Days. Any fires must be completely extinguished prior to the commencement of the Total Fire Ban.

Can I drive a vehicle in places where the vehicle will be in contact with crops, grass, stubble, weeds, undergrowth or other vegetation?

During Fire Danger Period

YES

But only if the vehicle is fitted with an efficient silencing device (eg. muffler) that takes all of the exhaust from the engine through the silencing device.

You should avoid driving vehicles through dry vegetation in hot and dry conditions, even if it is not a Total Fire Ban Day, due to the risk posed by the hot exhaust system.

On Total Fire Ban Day

YES

But only if the vehicle is fitted with an efficient silencing device (eg. muffler) that takes all of the exhaust from the engine through the silencing device.

This should be avoided wherever possible as the risk of starting fires is extremely high and the impact of fire on these days may be much greater.

Can I use a chainsaw, plant or grass trimmer or lawn mower?

During Fire Danger Period

YES

Chainsaws, plant or grass trimmers or lawn mowers may be used in green vegetation without limitation.

But, for use in vegetation that is not green (that is dry vegetation), chainsaws, plant or grass trimmers or lawn mowers must be:

Free from faults and mechanical defects that could cause an outbreak of fire

Fitted with an efficient spark arrester

Have an area of at least 3 metres around the machine cleared of flammable material. Further, the operator of the machine, who must be in attendance at all times the machine is being used, must carry either of the following fire suppression equipment:

> at least one knapsack spray pump, in working order, fully charged with water, with a capacity

of not less than 9 litres

> at least one water (stored pressure) fire extinguisher, in working order, fully charged with water and maintained at the correct pressure, with a capacity of not less than 9 litres.

Note that the spark arrester, the knapsack spray pump and the water fire extinguisher referred to above must comply with the applicable Australian Standards.



In an emergency TRIPLE ZERO - 000



FIRE PREVENTION and YOU during fire danger period

On Total Fire Ban Days

YES

As for the Fire Danger Period.

This should be avoided wherever possible as the risk of starting fires is extremely high and the impact of fire on these days may be much greater.

Can I carry out activities including:

welding, grinding, charring, soldering or gas cutting

rail maintenance

heating bitumen

relocating bees using a bee smoker

extracting honey using heat or flame?

Any other activity associated with bee keeping that involves heat or flame requires a permit.

During Fire Danger Period

YES

But only if:

A fire-resistant shield or guard is in place to stop sparks, hot metal or slag from the fire

An area at least 1.5 metres from the operation is clear of flammable material or wetted down sufficiently to prevent the spread of fire

You have a reticulated water supply or

water spray knapsack containing at least 9 litres of water

All cut-offs and hot materials from the operation are placed in fire-proof receptacles

A person is in attendance at all times while the fire is alight and has the capacity and means to extinguish the fire

The fire is completely extinguished before the person leaves.

On Total Fire Ban Days

NO

Activities such as:

welding, grinding, charring, soldering or gas cutting

rail maintenance

heating bitumen

relocating bees using a bee smoker

extracting honey using heat or flame

are banned on Total Fire Ban Days without special permits that apply to these days.

These are called Section 40 permits.

In limited circumstances, CFA or MFB may issue a permit on Total Fire Ban Days to:

> community organisations, charitable organisations, fundraising organisations

> statutory corporations, councils

> industrial or trade operations

for the purpose of carrying out their work, or for the purpose of public entertainment, or for religious or cultural purposes.

These permits must come from CFA District offices, CFA Headquarters or MFB Zone offices, and cannot be issued by Municipal Fire Prevention Officers.

Can I use an incinerator?

During Fire Danger Period

YES

Provided that:

1. You check with council about any local laws that might prescribe conditions or restrict or prohibit incinerator use (eg. bans on certain days, in certain areas or during certain times)

2. And the following requirements are met:

The fire is effectively restricted within the incinerator

The wind is not more than 10 kph (this can be observed if leaves and small twigs are in constant motion)

The ground and air space within 3 metres from the outer perimeter of the incinerator are clear of flammable material

A supply of water adequate to extinguish the fire is available at all times when the fire is burning

A person is in attendance at all times while the fire is alight and has the capacity and means to extinguish the fire

The fire is completely extinguished before the person leaves.

On Total Fire Ban Days

NO

Incinerator use is banned during Total Fire Ban Days.

Can I use self-propelled farm machinery, tractors, slashers, earth-moving, excavating or road-making machines propelled by a heat engine within 9 metres of any crops, grass,

stubble, weeds, undergrowth or other vegetation?

During Fire Danger Period

YES

But only if the machinery:

Is free from faults and mechanical defects that could cause an outbreak of fire

Is fitted with a spark arrester in working order (unless it is fitted with a turbocharger or an exhaust aspirated air-cleaner)

Carries fire suppression equipment comprising either:

> at least one knapsack spray pump, in working order, fully charged with water, with a capacity of not less than 9 litres

> at least one water (stored pressure) fire extinguisher, in working order, fully charged with water and maintained at the correct pressure, with a capacity of not less than 9 litres.

Note that the spark arrester, the knapsack spray pump and the water fire extinguisher referred to above must comply with the applicable Australian Standards.

On Total Fire Ban Day

YES

As for the Fire Danger Period.

This should be avoided wherever possible as the risk of starting fires is extremely high and the impact of fire on these days may be much greater.



Stay aware of the Fire Danger Rating and know what to do.

The Fire Danger Rating predicts how a fire would behave if one started, including how difficult it would be to put out. The higher the rating, the more dangerous the conditions. The rating is your trigger to act, so to stay safe you need to stay aware of the Fire Danger Rating in your district. During the fire season, the Fire Danger Rating will feature in weather forecasts and be broadcast on radio and TV and appear in some newspapers. It can also be found on the websites of the CFA, Department of Sustainability and Environment and Bureau of Meteorology or by calling the Victorian Bushfire Information Line on **1800 240 667**

	WHAT DOES IT MEAN?	WHAT SHOULD I DO?
CODE RED	These are the worst conditions for a bush or grass fire. Homes are not designed or constructed to withstand fires in these conditions. The safest place to be is away from high risk bushfire areas.	Leaving high risk bushfire areas the night before or early in the day is your safest option – do not wait and see. Avoid forested areas, thick bush or long, dry grass. Know your trigger – make a decision about: <ul style="list-style-type: none"> – when you will leave – where you will go – how you will get there – when you will return – what you will do if you cannot leave
EXTREME	Expect extremely hot, dry and windy conditions. If a fire starts and takes hold, it will be uncontrollable, unpredictable and fast moving. Spot fires will start, move quickly and come from many directions. Homes that are situated and constructed or modified to withstand a bushfire, that are well prepared and actively defended, may provide safety. You must be physically and mentally prepared to defend in these conditions.	<ul style="list-style-type: none"> • Consider staying with your property only if you are prepared to the highest level. This means your home needs to be situated and constructed or modified to withstand a bushfire, you are well prepared and you can actively defend your home if a fire starts. • If you are not prepared to the highest level, leaving high risk bushfire areas early in the day is your safest option. • Be aware of local conditions and seek information by listening to ABC Local Radio, commercial radio stations or Sky News TV, go to cfa.vic.gov.au or call the Victorian Bushfire Information Line on 1800 240 667
SEVERE	Expect hot, dry and possibly windy conditions. If a fire starts and takes hold, it may be uncontrollable. Well prepared homes that are actively defended can provide safety. You must be physically and mentally prepared to defend in these conditions.	<ul style="list-style-type: none"> • Well prepared homes that are actively defended can provide safety – check your bushfire survival plan. • If you are not prepared, leaving bushfire prone areas early in the day is your safest option. • Be aware of local conditions and seek information by listening to ABC Local Radio, commercial radio stations or Sky News TV, go to cfa.vic.gov.au or call the Victorian Bushfire Information Line on 1800 240 667
VERY HIGH	If a fire starts, it can most likely be controlled in these conditions and homes can provide safety.	<ul style="list-style-type: none"> • Check your bushfire survival plan
HIGH	Be aware of how fires can start and minimise the risk.	<ul style="list-style-type: none"> • Monitor conditions • Action may be needed
LOW-MODERATE	Controlled burning off may occur in these conditions if it is safe – check to see if permits apply.	<ul style="list-style-type: none"> • Leave if necessary

For more information contact: **1800 240 667** www.cfa.vic.gov.au



PREPARE. ACT. SURVIVE.
FireReady



In an emergency TRIPLE ZERO - 000



FIRE PREVENTION and YOU during fire danger period

FARM FIRE SAFETY CHECKLIST

cfa.vic.gov.au

> PROTECT YOUR ASSETS, HOME AND FAMILY

> FUEL REDUCTION

- > Keep fuel loads to a bare minimum around house blocks, sheds and other assets
- > Create a heavily grazed area where stock can be moved on fire risk days
- > Maintain slashed or mown fuel breaks to a width of at least 3 metres

> HAY

- > Use a probe to test for heat and look out for warning signs such as steam, unusual smells or slumping
- > Allow for airflow by not stacking hay right up against the roof of sheds
- > Store hay in multiple locations to avoid large losses

> MACHINERY & HARVESTERS

- > Check and clean machinery thoroughly before using for the first time
- > Equip harvesters and other large machinery with appropriate fire extinguishers and a shovel
- > Think twice before harvesting, grinding, welding or slashing on hot, dry, windy days
- > Take regular breaks to check for straw or grass build-up and overheating bearings

> AROUND THE HOME

- > Have one smoke alarm on each level of the house and in each bedroom where someone sleeps with the door closed
- > Check your chimneys and flues before winter for birds' nests, cracks, rust or damaged internal fire bricks
- > Always use a fire screen in front of an open fire
- > Replace damaged appliances such as heaters or power boards immediately

> BURNING OFF

- > Always register your burns: call 1800 668 511 or email burnoffs@esta.vic.gov.au
- > Never leave a burn-off unattended
- > Always have resources on hand to contain the fire if necessary

> RESPONSE & SUPPRESSION

- > Check, service and recharge all knapsacks and extinguishers before the Fire Danger Period
- > Phone 000 as soon as you detect a fire. It takes time to get a fire truck on site
- > Ensure everyone knows how to use the private firefighting equipment on your property
- > Keep a fire extinguisher inside the house and a fire blanket handy in the kitchen

> ACCESS FOR EMERGENCY SERVICES

- > Make sure your property name and number are clearly visible from both directions at the property entrance
- > Make sure a truck can turn around in access tracks near to house blocks, sheds and fences
- > Clearly mark all water supplies and ensure water tanks have CFA compatible fittings

> BE PREPARED TO ACT QUICKLY IN AN EMERGENCY

- > Have essential items prepared and ready to go: medications, bottled water, first aid kit, photos, valuables, a battery-powered radio, 100% woollen blankets and essentials for your pets
- > Scan important documents including current inventories of feed, stock and fencing onto a CD or memory stick and keep a copy stored off your property
- > Keep important contact numbers (family, neighbours, vets, stock agents and insurance) in an easy to access place



In an emergency TRIPLE ZERO - 000

Official Opening and Blessing of the Senior McKillop Block at Lumen Christi



Joanne Brewer, principal of Lumen Christi welcomed all those who had gathered to celebrate the official opening and blessing of the refurbished senior building called the McKillop Block. Then the assembled students beautifully sang 'We Welcome You to This Place'.

The school captains were then called upon to tell what life had been like in the temporary portables while the block was being refurbished, and to say how pleased they were to be in their renewed surroundings.

"The portables had been our home for almost two years. Portables can be likened to living in a caravan. Everything you need could be put into it, but the lack of space means that whatever was in the portable had multiple uses....."

"Wet weather days were by far the worst part.... There was nowhere to go and nowhere to hide; we did not want to run around because of the vibrations.... being in a portable meant that you had a clear view of the teacher approaching.... giving you enough time and little distance to cover to find your seat."

"The portables were positioned up against the shrubbery near the fence. One of those trees was sheltered from the weather by the north wall.... and it was in this safe haven that a bird chose to build its nest. This was by far the best part of being in the portable. Over a period of weeks we were privileged to watch, within 50 cm, the mother fly to and fro attending her fledglings. The birds left the nest and spread their wings.

We were soon to follow....to our brand new spanking Senior Building. This brand new shiny building instantly became our new home during school hours and if the portable was a caravan... this new building is a display home. Purpose built, with a place for everything and everything in its place, there is new furniture, new appliances (there are kitchen facilities) and a colour scheme that keeps you awake but not on edge."

Mrs. Maria Kirkwood, Director of Catholic Education, Diocese of Sale, said it was a pleasure to be present for the opening and blessing of the building, which has created space for lifestyle as well as curriculum advantages for the students and teachers, resulting in health for body, mind and spirit, and help with the school's policy of developing awareness of sustainability. She said the school

could be proud of the achievement as she thanked the Federal Government for the funding, and the school and parish for their contribution in funding, ideas, skills and support to make it happen.

The rooms will be a place to share joys, fears and tears, a sacred space to bless, nurture and welcome. Mrs. Kirkwood also referred to the parish name - Lumen Christi - reminding those present that it means the Light of Christ. She urged the students to be Christ's light to their community by their actions and words.

Darren Chester, Federal Member for Gippsland, commented on the children's lovely singing and on his attempt at growing a moustache for Movember fundraising. He told the students that it is important to have speeches and special occasions to thank those who had played their part to make a project such as theirs happen.

He said it is what happens inside the building that is most important. He urged the students to make the most of every opportunity they had at school; to never give in; to do their best; saying you may not always win, but be proud of what you have achieved.

He thanked everyone for the invitation to "this terrific little school". Father Peter Slater, Diocesan Administrator, began the service of dedication, blessing and opening by saying that the new building will provide an improved education opportunity, which comes from our faith in God, our loving creator and Jesus who loves us dearly and deeply.

He continued, "We are precious beyond measure. It is our treasure and affects all we do in school."

The service ended with the singing of the school song "We Shine".

The people then moved to the new building where the school captains and Darren Chester unveiled the plaque, and visitors were welcomed to view the new rooms and facilities, before going to the Eco Centre Building for refreshments.

Celebrating 50 years of service to God and the community.

A combined churches service will be held on

March 15, 2015 from 10am-11am in Churchill Town Hall

You are Invited. Further information contact Ruth 03 5122 1961

THE BARBER SHED
Katie, Raquel and Lisa and Luisa thank you,
our valued customers.
We wish you a Merry Christmas and Happy New Year

NO APPOINTMENT NEEDED!
JUST WALK IN...
Shop 8A
West Place Shopping Centre,
Churchill
Telephone: 5122 1300
(opposite Woolworths)

S&J CYCLES

GIANT
RIDE LIFE. RIDE GIANT.

**2015 bicycle range
in store NOW!**

35 Tarwin Street,
Morwell

Phone
5134 3891

Fax 5134 5503
Email: sjcycles@netspace.net.au

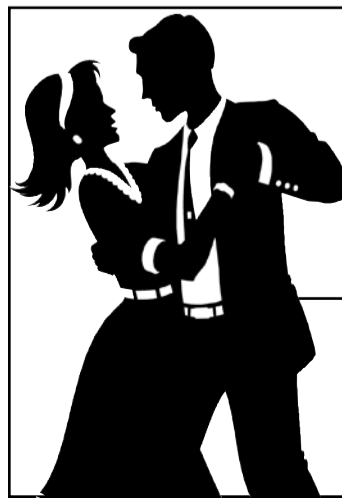
CHRISTMAS
LAYBY AVAILABLE

PIRTEK
fluid transfer solutions

**Products
and Services**

- * Lubricating and Greasing,
- * Industrial Rubber and PVC Hose,
- * Quick Connect Couplings, * Brassware,
- * Pneumatic Products, * Stainless Steel Fittings,
- * Kamlocks, * Spill Control.

For more information:
Phone **03 5134 2277**, Fax **03 5133 0156**
or visit our web site www.pirtek.com.au
4/2 Vestan Drive Morwell 3840



Old Time Family Dance Jeeralang North Hall Jeeralang North Road Friday, January 23, 2015

Dancing from
8.00 pm to 11.30 pm
Music: Band - **Harmony Plus**

Admission: \$8.00
Door Prize
Supper supplied

Come along for a great night!

For more details please ring Judy 0402 923 897, Heather 5166 1494



A Churchill & District History Series

Looking Back...

...through the eyes of local residents



Power(ful) Memories of Hazelwood Power

by Leo Billington and Ruth Place



or swear and was always good to work for. We got along well together sharing the work. Alf was a shire councillor for 31 years. I remember looking down into the open cut while looking after the sheep. I got to know some of the guys who worked there including Vin Waite's father and Neil Dennier, both former Morwell footballers. In Alf's honour a street and a reserve in Morwell are named after him.

As a World War 1 veteran Alf served his country as a Light Horseman. He didn't want to talk about the war. But he did tell me he had to shoot his horse before returning home, as they couldn't be brought back to Australia. This had been a sad time for Alf."

[Bruce McMaster (Morwell Historical Society) tells that Alf secretly became a pilot flying Sopwith Camels towards the end of the war.]

"Alf had a flock of 1000 sheep, but decided to go into cattle. He went

to Delegate and bought two pens (approximately 15 per pen) of Angus heifers. He acquired a bull and built his herd up to 200. In the shed was a jinker. It was seldom used. I believe it ended up in the Moe Folk Museum.

Mostly Alf used to ride the property on horseback, but later, when he was unable to ride, he acquired a La Salle then a Rolls Royce Silver Cloud 1 motor car, which he drove across the land keeping watch over his animals. In the back seat would be his dogs of which he was very fond. Alf never owned a tractor. We would take heavy wire - tied bales out into the paddock in a wheelbarrow. You had to be careful how you picked up the bales because of the wire. Stan Grauer was the man who cut and baled the hay. Stan also used to take dancing classes.

I returned to work for Alf part time, when I married in about 1960. Alf (one of six children) had two brothers who had houses on the land. John was the oldest and Ben the youngest. One house was called Meryla and

was near the Hazelwood cemetery.

Ben was killed in 1961, on the highway while riding a horse. He had gone to look at a property to graze his cattle. A car came through a cutting and knocked him off his horse. The horse and Ben were both dead on the road when I found them. I drove into Morwell to report it to the police. Terry Lappin was the policeman in charge. Alf took over keeping Ben's dogs when he died."

Bruce McMaster added further to the story by saying at 88, Alf was awarded an illuminated address in honour of his years as a shire councillor. He was also remembered for the Ronald Art Prize, sponsored by Morwell Shire Council for some time.

The beginning.

The work had begun on both the pondage and power station in 1959.

A newspaper clipping, presumed to be the Morwell Advertiser, reported that "During the week, truckloads of earth-moving machinery have poured into Morwell and at the site

former Embleton family farm.]

Top soil and clay were worked together to form the earth banks. Yellow earthmoving equipment raced around, shifting earth from one point to another. The farms disappeared as water from Eel Hole Creek flowed in. The farmers moved away.

Throughout 1960, Syd, with his trusty Voigtlander camera, compiled an exciting range of photographs showing the pond being constructed.

"Earthworks actually commenced on January 1, 1960 and were completed on January 1, 1961. There was a contract to construct a pond and have it filled without missing a season. Mind you, the seasons still had to be worked around," Syd recalls.

"The overflow spillway taking water into Eel Hole Creek (immediately south of the Hazelwood Cemetery) was a massive undertaking at the time. There was enough reinforcing steel and concrete to keep a young boy mesmerized for weeks and weeks. Pioneer



November 24, 2015 marks the 50th anniversary of Hazelwood Power Station's first operation.

The beginning of that story started many years before with the construction of the power station building, establishing the Hazelwood Pondage and beginning to extend the coal mine.

It is of these times that this first instalment of the Hazelwood Power Station story will begin.

Speaking with long time local resident and farmer, **Don Evenden** we have been able to obtain some recollections of a special character – **Alf Ronalds**.

Don worked for Alf for two years from 1956. Here is what he recalls:

"I can remember when the power station area was just paddocks. I used to go mushrooming there when I was about ten. Alf had land where Hazelwood Power is today, and he sold it to the SEC for the power station construction and the extension of the mine on the Hazelwood side. The SEC allowed Alf a grazing licence for his sheep, and later cattle around the top of the open cut and mine area.

Alf was a person who didn't drink, smoke

a cluster of huts has sprung up overnight. Preparation of the power station site is being done by a Sydney company which has 18 months to complete the job.

More than a million cubic yards of earth have to be shifted to level the site. The work has created a demand for labour, and together with the construction of the power station, is likely to provide a new employment market here for several years."

The Hazelwood Pondage

Sometimes known as the Hazelwood Pondage or, as a 1996 Hazelwood Power Corporation Technical Overview describes it, the Cooling Pond.

Local resident, Syd Payne clearly remembers the pond being built. He recalls the former farms being sold, the earthworks being undertaken by New South Wales contractors, Gemell and Hickey and also Des Malone, the site foreman.

Once the earth was scraped away, farmland owned by Syd's parents was eventually submerged by the water. So too, were other farms owned by Jack Daly (a dairy farmer), his brother Bill Daly (beef farmer), Jack and Frank Lawless, Alan McFarlane, Eric Horsefield, Alan Walker, Mr Embleton, Mr A Bruce and "Curley" Alexander. [The small island adjacent to the current caravan park is part of the

Concrete had a batching plant at the power station building site which made it easy and more economical to transport wet concrete.

I loved watching the machinery whiz around. Being such a large area and no intersecting public roads, it was rather 'gung-ho'. I managed to photograph large scappers stricken in the creek when the concentration of drivers lapsed. Once, several huge bulldozers were required to drag a scrapper from the bog.

When work initially commenced, Gemell and Hickey used our old hay-shed for a workshop, later replaced by a larger tin shed fronting the then Midland Highway.

Towards the end, earthworks had to be planned with precision as water levels began to rise and digging was continuous. But it all came together - the earthen banks proved to be robust and commissioning started. The Hazelwood Pondage had to be successfully 'married' to the power station."

That marriage did occur and the following two paragraphs give you an idea of how that happened.

The "pond" consists of three sections joined together. "The cooling pond outlet side (43 ha hot water discharge from condensers), the main cooling pond (437 ha evaporating cooling service) and inlet side cooling pond (20 ha cooled water to the circulating water pump suction). The pond sections are formed by earth banks and the natural contour of the land. The cooling pond is approximately 3.2 kms long and 2.4 km wide at its southern end and the capacity is 30,913 megalitres.

Continued next page.....





A Churchill & District History Series

Looking Back...

...through the eyes of local residents



Hot circulating water, returned from the power station, cools naturally as it flows around the inlet side of the cooling pond. Circulating water for the condensers and for other cooling purposes is drawn through screens from the inlet side of the cooling pond by the circulating water pumps.

The Pondage has been a great asset for the district.

Bill Brown of Churchill remembers when he was an apprentice plasterer of just 17 years, with Standard Fibrous Plaster Morwell. He would ride on the back of the company truck from Morwell to Hazelwood Power Station site. There would be three qualified men filling the cab of the truck full of plaster board, so

and walking on the grid chilled him.

They were working in an enclosed section. One day he opened the door to see a man walking a girder 30cm wide with no safety harness on! "I felt ill just watching him. I had to turn away."

As an apprentice, it was Bill's job to order and then later go and get the lunches at what they called the Vicarage - a shop in a shed run by Jock Vicars 200 metres away. Everyone ordered lunch - sausage rolls, pasties, pies and sangers. Bill said you would have to queue at the door for up to half an hour. Then it would be up the steps again!

It took one month to plaster each control room. Bills remembers vividly one incident when, as he was the apprentice and the smallest, he had to fit in a small space above the ceiling and hold the plaster until it was secured. The space was so small Bill became a bit panicky and felt he couldn't get out. However, the fellows talked to him and calmed him down enough so that he relaxed and was able to retreat.

Bill remembers an old Gallipoli veteran who worked there. He had a fire in a tin to warm his hands. Jack wasn't seen for a couple of days and the boys spun a yarn that Jack had had a heart attack and died and that they couldn't find his home, so they had left him on a seat outside the Post office. Bill was horrified, but later found out that it was all a joke.

Fred Wright of Churchill, began at Hazelwood in September 1961. He had served his apprenticeship as a boilermaker at Yallourn SEC and Johns and Waygood in South Melbourne. Fred was at Yallourn on D Station construction with Johns and Waygood in 1954, and continued on at Yallourn SEC in C and E Station. In 1961 he went to Hazelwood with Babcock and Wilcox.

Fred was brought to Hazelwood to install the drum gear which had to be lifted on an

angle to avoid clashing with the beams. He was 24 years old. He remembers walking around on the beams with no handrail. As years went on he said, there were more safety regulations. It was pretty rough but we didn't think about it in the early days, you could climb around anywhere.

Fred was made a Leading Hand and along with Chas Guzzardi, it was their job to make sure the gear was in place and the job done. Fred remembers a chap coming looking for a job, who was called Fijian George. The boss asked him if he could climb and work at heights. His answer was 'I have been climbing coconut trees and getting coconuts since I was a 14 years old'. He got the job!

Fred's boss left to go on staff, so Fred took over the foreman's job in 1964, when the first boilers made steam, and he had to look after the tubing of the boilers. Fred worked at Hazelwood until October 1972. After working away for some years, Fred returned to work as foreman on the refurbishment of 1 and 2 boilers in 1982-83.

Fred returned there in 1997 with ABB and Alstom to do the outages and repairs. Instead of staying six months as planned, Fred ended up staying until 2007 when he was 71 1/2 and he retired.

Fred recalls fellow workers Bernie Tuohey (fitter), Jimmie Mitchell (bricklayer), Brian McEwen (carpenter) and Tommy Little (boiler maker). There are few of the originals left now he added sadly.

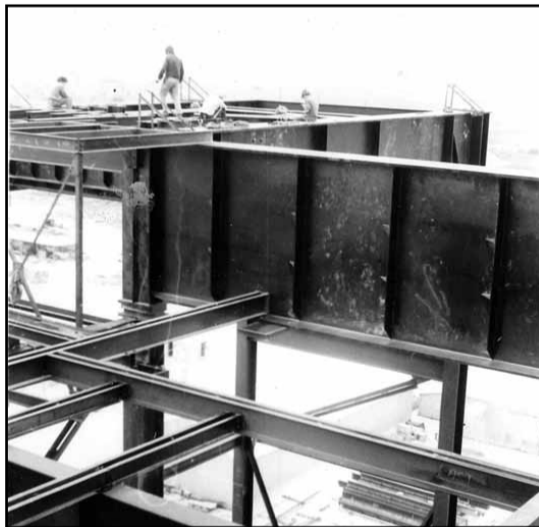
To be continued in February 2015

Thank you to those who have contributed to this story, not only your memories, but also the wonderful photos.



Fred Wright

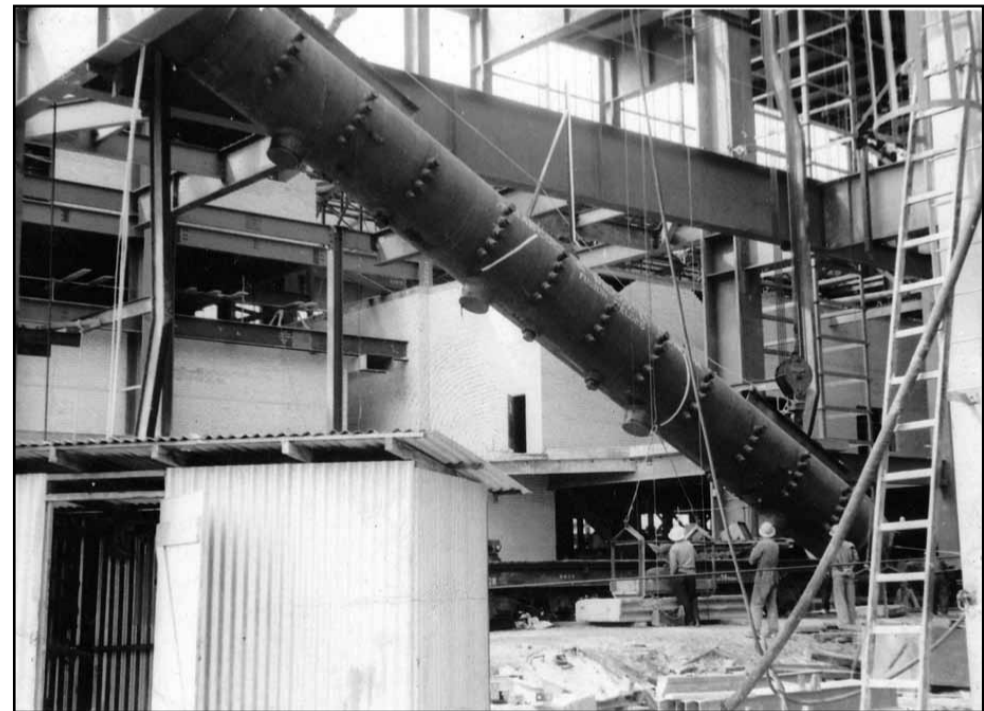
This is just the start of recording people's memories of their time at Hazelwood. If you would like to share your memories, and be included, please ring Ruth 5122 1961 or Leo 0458 661 848.



apprentices were relegated to the outside, 'rain hail or shine, dust in your face'.

"The first time I went," he said, "I looked up at the gate and wondered how could a human being design something on such a large scale which all comes together in a functional way. It was awesome."

The crew was to work way up at the top of the constructed area. There was one set of steps. Bill confessed he was scared of heights



Lions Club Citizen Awards 2015

The Lions Club of Churchill and District Inc. will once again be organising a community function to celebrate Australia Day in Churchill.

The event has proven very popular in recent years.

To enhance the event, the club will present a Young Citizen Award and a Citizen Award to the most outstanding person(s) in each category for their contribution to the community during the previous 12 months. This Award is now adopted as a tradition

and we ask that residents again nominate candidates.

Nominees must be a resident of Churchill or reside in the immediate surrounding district.

The nominated person's applications will be scrutinised by an independent panel of judges and the relevant winner for each category chosen. The decision of that panel will be final and no correspondence will be entered into.

The awards will be supplied and presented by the Lions

Club of Churchill and District Inc. at the Churchill Australia Day Ceremony on January 26, 2015.

Lions Club of Churchill & District Inc. Young Citizen of the Year Award - applicants must be 18 years or under on January 26, 2015.

Lions Club of Churchill & District Inc. Citizen of the Year Award - open to all applicants over the age of 18 years on January 26, 2015.

**Closing Date:
December 19, 2014.**



Churchill Lions
PO box 110, Churchill, 3842

we serve



All information is confidential. The decision is final and no correspondence will be entered into.

2015 CHURCHILL CITIZEN OF THE YEAR AWARDS NOMINATION FORM

NOMINATION FOR (Please tick appropriate box):

Lions Club of Churchill & District Inc
Citizen of the Year Award

Lions Club of Churchill & District Inc
Young Citizen of the Year Award

Must be 18 years or under on January 26, 2014

Name: Other Names:

Private Address:
.....
.....

Occupation: Private Telephone Number:

Date of Birth:..... Age:..... Marital Status:..... Children:.....

The person is being nominated for contributions to the community in:
.....
.....
.....

Other significant contributions and achievements:
.....
.....
.....

Additional material may be attached if desired.

Past and present membership of community/sporting/professional bodies, etc:
.....
.....
.....

Other significant contributions and achievements:

.....
.....
.....

Additional material may be attached if desired.

ANY OTHER RELEVANT BACKGROUND INFORMATION:
.....
.....

OTHER PERSONS WHO MAY BE CONTACTED FOR FURTHER INFORMATION ABOUT NOMINEE:

Name:..... Name:.....
Position:..... Position:.....
Address:..... Address:.....
Postcode:..... Postcode:.....
Telephone Number: Telephone Number:

TO BE COMPLETED BY PERSON SUBMITTING NOMINATION:

Mr/Mrs/Miss:.....
Address Post Code:
Organisation represented (if any): Telephone/Mobile:
Signature:.....

FOR MORE INFORMATION CONTACT:
The Secretary - Bob Lowick
Lions Club of Churchill & District Inc.
Phone: 0408 377 781

FORM TO BE RETURNED TO:
Lions Club of Churchill & District Inc.
PO Box 110
CHURCHILL 3842
or Fax: 5122 1116

Churchill Primary School

First Aid Course for students:

On November 24, two representatives from St Johns Ambulance came to Churchill Primary School to teach our students how to give first



aid in the event of an emergency. The students were taught the basics from calling 000 to giving resuscitation. Diane and Caroline gave a presentation using the interactive whiteboard, and then the students practised the practical aspects of the recovery position, clearing the airways, bandaging each other and CPR.



Remembrance Day:

Mrs Gilmore and the Junior School Council went to the cenotaph in Morwell to join in the community commemoration of Remembrance Day, on November 11.

Back at school, a short ceremony was held with the teachers and students. Mr. Bob Lowick, a veteran of the Australian Army, addressed the students about the importance of the day to veterans of all wars. He said it was a chance to get together with old friends. It was also a way to remember those who did not make it back to Australia, or those who have died from the injuries and/or the effects of their



service for Australia.

All you need is LOVE:

Cupid has been very busy at Churchill Primary over the past few months. We congratulate Jody Ellis on her wedding to Christian. We wish them all the best as they start their life together and trust that all their troubles are little ones! We congratulate Nick Walsh and his fiancé, Sinead, on their engagement. We also congratulate Hollie Woodman and her fiancé, James, on their engagement.

Swimming:

Grades Prep, 1 and 2 students have been enjoying swimming lessons. They are very eager to practise what they are learning and they are very excited, but very tired when they come back to school.

Hayden, in Grade 1, says that he really enjoys the free play after the lesson. He also enjoys floating, swimming with his arms, using a board to learn, swimming on his back, going to the deep end and sliding into the pool and swimming across to the steps. The students who did not go swimming took part in a unit of work on the topic of water safety. Many of these students are already having lessons out of school hours.

Kids with Cameras

This year in Grade 2, the children have been part of a camera club called 'Kids with Cameras'. Every Wednesday the children learnt about different ways to take photos, such as checking the background and shooting from different perspectives. After the children took photos, we would look at them as a class, and discuss each photo, giving feedback on how we might be able to improve the shot. The children have all chosen their favourite shot to have enlarged and framed, and these will be on display at the school in December. Thank you to Derek, our school chaplain, for assisting the children and taking them outside with the cameras. Mrs. Harding

In 'Kids with Cameras,' Derek took five kids outside every week to take their photos, each in different ways. Some of the ways were looking up, looking down, looking straight on and moving your body. My photo (Ruby) is of a pink rose and Andrew's photo is of Andrew and a friend's eyes. He held the camera backwards. Our favourite part was when we got to use the big camera, and taking photos in different ways.

By Ruby and Andrew
And in the lead up to Christmas - **Christmas Dress Up Day:**

Students and staff dressed up in our Christmas finery to welcome the Christmas season. The fundraising

g r o u p

provided a BBQ lunch of sausages, juice and fairy floss. On the last day of school they will draw the winners of a Christmas H a m p e r . We thank our tireless s c h o o l volunteers for their support of our students. A thank you m o r n i n g tea was held on December 4 to show our appreciation to our helpers.



Toy Run:

Churchill Primary School is proud to be involved in The Latrobe Combined Motorcycle Clubs' Toy Run. Many members from the different groups, roared into the playground on November 13. It was a spectacular sight to behold! Alf explained to the assembled students why the Toy Run was important for disadvantaged families in the Latrobe Valley. He thanked Churchill Primary for the many years of involvement in the Toy Run. The children were given some tips on how to keep safe when riding a motorbike. Tim from the Salvation Army told the students how the Army had helped over 300 families last year through the Toy Run. He thanked the students and staff for their effort and thanked the community for its generosity. Darrell White explained how the Latrobe City was proud to be a sponsor of the Toy Run. Tim then took out his trumpet and led the singing of "Jingle Bells" to welcome our very special guest, Santa, on a very special motor bike.

Christmas Club:

The Cooperating Church has once again invited our Grades 1 - 4 students to take part in Christmas Club. The students go to the Church, learn about the story of Christmas and then take part in activities related to Christmas.

This year the story was told by puppets and a few of our students enacted the nativity scene. The Church has a wonderful group of volunteers who help the children to do the craft work. The students made bonbons, dioramas, place mats, book marks, crowns and there were many other interesting activities. We thank Reverend Brenda Burney, Ruth Place and all the volunteers for the opportunity to attend these two very engaging sessions.

Farewell Mrs. Jordan

We have just heard about the decision of Mrs Pam Jordan to retire after over 20 years of service to Churchill Primary School. We wish her and her husband, Paul, all the very best for the next part of their lives. If plans go ahead, they hope to travel around Australia and spend many hours with their grandchild and /or in the future, grandchildren.

Churchill Primary School students and staff extend our best wishes for a Happy and safe Christmas to everyone in the Churchill Community.

Picture Captions

- Top Left: Di fixes Nick
- Top Right: Santa and the Toy Run
- Middle Left: Lexi puts Maddi in the recovery position
- Bottom Left and right :Fun at Christmas Club



Lumen Christi Primary School

Remembrance Day

Traditionally, Lumen Christi has always commemorated Remembrance Day and this year was no exception. The whole school participated in a very poignant ceremony and the addition of handmade poppies around the flag pole, added to the solemnity of the occasion. The silence was palpable and students recognised the importance of remembering and acknowledging the significance of Remembrance Day.

Grade 5 and 6 students were challenged with the following question:

Why is peace around the world so difficult to achieve? Here are some of their responses.

Peace is difficult to achieve because people of different cultures want different things. Unfortunately, some people become obsessed with their power which leads to major problems.

Mitchel

It is really difficult to make peace with some countries because they do things differently. Some people think they are really important and then they try to dominate other people, because they are only interested in gaining more power. People may be too scared to fight back.

Sydney

It is hard to have peace because that would mean a perfect world! People can go over the top in their beliefs while others may try to go against them. This is when conflict starts. More and more people may then become involved and war may eventuate. No one wins!

Nathan

Earn and Learn

Our senior school students were all abuzz over the annual Earn and Learn session. Business ideas had been formulated and presented, employment positions had

been allocated and all was set for our little community to start trading. From second-hand stores, to bakeries, to craft stalls, our Grade 5 and 6 students were out to attract the interest of our local residents and tourist groups (Grades P-4) who all had money to spend. There were accounts to be settled while the Tax Office was kept busy. Our bank tellers were very efficient as were the account clerks. The police were vigilant with only a few infringement notices being handed out! Repayment of loans and additional expenses brought our business entrepreneurs back to reality. Valuable lessons were learnt and our students' financial understandings were extended a little further.

Student Journalists at Work at Lumen Christi

This is the first interview for the Christi Chronicles. The topics I am reporting about are, history, writing and literacy. I have interviewed two students from 3/4s about history. They have been learning about the first fleet. Kayley said "They came in ships bunched up in cells". Oakleigh said "There was a Charlotte ship, Prince of Wales ship and a few others."

In writing they have been writing in their writer's notebooks. 3/4s have been writing informative pieces. The students have written newspaper articles, travel brochures and reports. Last term Grade 3/4s had read "Charlie and the Chocolate Factory". Each day the students had to complete a question based on the chapter Mrs Savage had read. Kaitlyn

Hi Meg here, I am reporting for the Christi Chronicles. I have just interviewed Mrs Webster and the Grade Prep/1 class.

The main topic in Prep/1 was the olden days. That was part of their history learning. The reason why Prep/1 were doing this was to give the students a feel of what it was like in school and how they learnt in those days.

The students came to school dressed up as

children who were going to school in the olden days. Their classroom was also transformed into an olden day style classroom. There were four rows with three desks in those four rows. The children learnt lots of new rules throughout the day.

I asked some of the students how they felt about dress-up day. Some students said that the olden days were better because it was different to these days. Most of the students said that 2014 was way better than the olden days, because you can play on an ipod or ipad.

Its Kiera here, reporting for the Christi Chronicles. Last term in 3/4 the main focus in maths was multiplication and division. The 3/4s started their maths lesson by singing the times tables. They have also been learning about angles and graphs. Something else they have been working on is problem solving skills so they can work out which method would solve the problem. The next topic in maths is going to be fractions.

In science they learnt about space and natural disasters. I spoke to Natty, a student in Grade 3/4H, "In science we have learnt about what natural disasters do, how they are created and what is a natural disaster." Natty also told me that the 3/4s made power points presentations about natural disasters.

The Good Old Days at Lumen Christi

In Grade Prep/One at Lumen Christi the children had fun learning about school in the "Good Old Days". The children came to school dressed in "olden days" clothes and spent the day experiencing what it was like to go to school in the "good old days". Their teachers were Sister Anne and Miss Yeates, and they even had Cook who helped them make damper and butter. They also enjoyed a warm drink of cocoa. The children were encouraged to bring simple lunches and snacks, and avoid packaged foods. Most children brought their snacks and

lunches to school wrapped in baking paper and in brown paper bags.

The children had to sit in rows of girls and boys, with the younger children at the front. They were not allowed to talk or leave their seats, and children who were "naughty" had to stand in the corner. (They thought this was quite funny and many of the children were keen to experience standing in the naughty corner).

School was not much fun, technology was banned and there was lots of writing and copying from the board. However, playing olden days games like 'Farmer in the Dell' and 'What's the time Mr Wolf' were enjoyed, and Cook even taught them how to play marbles! It really was a fun way to learn about the past.

Tremendous Triptych

For just the cost of several tubes of super glue, the students of Grade 5/6W have created a Christmas triptych with a twist. The canvas is a refrigerator box, with every other object starting out it's life as something completely different.

The camels were appropriately fashioned from sandpaper scraps with fringes from an old cushion to add a touch of the exotic, the hair and facial hair were scalped from wigs in the classroom's hairdressing salon.

The lamb, which is easily mistaken for an old slipper, was once part of a blanket. The students are proud of their achievements which they planned and completed over a period of weeks. As the students worked away on the scene, they each discovered that they had a particular talent, one student had a very keen eye on just exactly how the folds on a garment would fall, another student created a nobleman's head dress from a small piece of shiny material...shades of making a silk purse from a sow's ear. The students hope to display their craftwork at the local shopping centre.

