

CHURCHILL & DISTRICT NEWS

Established 1966

Distributed Free

Red Cross Centenary - p 11



Baseball Come n Try - p 12



Writing & Poetry Comp. - p 13



09' fires 5 years on - p 14, 15



Thank you to our fireys



Representatives of Morwell Group of Brigades: Tony Gallagher, Craig King, Mandy Dempsey, Ray Beaton, Mark Bruerton, Todd Birkbeck, Allan Larkin, Darren Devlin.

Morwell Group of Fire Brigades

The Morwell Group of Fire Brigades, consisting of the Morwell, Hazelwood North, Churchill, Yinnar South, Driffield, Yinnar, Boolarra and HVP (Hancocks Victoria Plantations) brigades have been very busy recently responding firstly to the Hernes Oak fire, and then to the Driffield/Hernes Oak/

Morwell complex of fires.

Resources have been stretched due to the prolonged nature of the firefight, but all of our communities can be exceptionally proud of the efforts of the CFA volunteers, CFA and DEPI staff, and HVP crews who have worked tirelessly to get the flames extinguished.

Be reassured that while the Morwell Group

of brigades are out defending the Hazelwood Power Station and mopping up the Hernes Oak and Driffield fires, they have also organised other brigades from further afield to come into our stations and be ready to respond to any further incidents that may occur while our brigades are occupied with the Driffield/Hernes Oak/Morwell complex of fires.

Our brigades have worked very well together, and during this time have been well supported by offers of food and assistance from the community. Our thanks are especially extended to the Lions Club and local ladies for their assistance with feeding our crews in the early days of the fires.

... Continued Page 2

CENTRAL GIPPSLAND MOWERS & CHAINSAWS PTY LTD

Morwell Store
533 Princes Drive
Morwell Vic 3840
Tel: (03) 5134 8899

Pick-up and Delivery

Traralgon Store
309 Princes Hwy
Traralgon Vic 3844
Tel: (03) 5176 1999

traralgon@gippslandmowers.com.au

DAINBRIDGE NICHOLSON FINANCIAL SERVICES

George Nicholson, B.Com,CA

Chartered Accountant,
Tax Agent and Financial Planner

Phone: 5122 2033

Fax: 5122 2733

Email: kim.dainbridge@bigpond.com

morwell@gippslandmowers.com.au

Thank you to our fireys . . . cont

CHURCHILL & DISTRICT NEWS

YOUR COMMUNITY NEWSPAPER

Churchill & District News is a community newspaper staffed by volunteers.

The Team

- Team Leader/ Secretary: Ruth Place
- Treasurer: Ruth Courtis
- Editor: Carol Scott
- Advertising: Ruth Place, Tracey Burr
- Layout: Allan Larkin
- Production: Tracey Burr, Carol Scott, Ruth Place, Sam Gillett, Allan Larkin
- Proof Readers: Ruth Place, Olivia Jackson, Geraldine Larkin,
- Team Members: Delma Hodges, Charlie Rawlinson, Barbara Cheetham
- Webpage: Cassandra Hooimeyer

www.cdnews.com.au

Contributions

The deadline for the submission of articles and advertisements for the April 2014 edition is March 30, 2013

EDITORIAL

Articles for publication and Letters to the Editor can be sent to:
 Churchill & District News
 PO Box 234, Churchill, 3842
 Or Email: cdneditorial@aussiebb.com.au
 All articles must be submitted by the 30th of each month for publication in the next issue.



Articles can be left in our Drop Off Boxes Located at:
 Churchill Post Office, Co-Operating Church, Williams Avenue (east side door)

ADVERTISING

Advertising enquiries can be addressed to:
 Ruth Place, Tracey Burr or Allan Larkin
 Churchill & District News
 PO Box 234, Churchill, 3842
 or Email:
cdnadvertising@aussiebb.com.au
 Telephone: Ruth 03 5122 1961
 Tracey 0422 823 179
 Allan 0427 372 517

Disclaimer

The Churchill and District News wishes to advise that the views or remarks expressed in this publication are not necessarily the views of the Editor or the Management Team and no endorsement of service is implied by the listing of advertisers, sponsors or contributors.

CHURCHILL & DISTRICT NEWS IS PRODUCED UNDER THE DIRECTION AND CONTROL OF THE CO-OPERATING CHURCHES OF CHURCHILL.. THE CO-OPERATION IS MADE UP OF THE ANGLICAN, UNITING AND CHURCHES OF CHRIST

We acknowledge the support of



. . . from Page 1

The Morwell Group is also looking to update our Forward Command Vehicle in 2014, to provide a new 4WD Nissan Patrol wagon for use in assisting us with oversight and control at fires in our local areas. Although the government and CFA is supporting this initiative, the Morwell Group will still need to find about \$10,000 to ensure that we can pay our contribution of the changeover costs. Consequently, we will be looking for our communities to assist us in meeting this fund raising goal. Any offers of assistance would be most welcome, and can be directed in the first instance to either Group Officer Steven Barling on 0407 828 625, or Secretary Neville Scobie on 0429 188 063.

Churchill Fire Brigade

Churchill Fire Brigade has been very active over the last month, supplying crews and appliances to the fires still active in Gippsland. Many fires were started back in January through lightning strikes when the area was hit by a dry thunder storm, and many fires started across all of Gippsland as a result. More recently, we've been heavily involved in the local fires at Hernes Oak, Driffield and Morwell, and are still playing an active role in the fire at the Hazelwood Open Cut coal mine.

As a brigade, we are very proud of our efforts during this challenging fire season and it is pleasing to see all members making a contribution to support our efforts. It is sometimes not easy for those left behind, as there are times when we have some of our firefighters left at home after the fire truck

has gone out to a fire. For them, there can be a sense of helplessness, as they are not out being actively involved in fighting a fire. However, we still have an equally important job to do to make sure that our home patch, and our communities around us, are still protected from the next fire that may come along. So together, we all make that important contribution to keep our communities safe from fire and other incidents, and for that, we can be enormously proud of the service that we are providing to Churchill and our surrounding districts.

CFA Information Van

The CFA information bus has been a great asset, roving around the areas of Morwell with two educators available to talk to the residents of Morwell and anyone visiting



CFA Information Van

Morwell and surrounds during the fire. They have been able to re-assure people and give information regarding health and safety and how to manage the fire emergency.

The CFA Information bus was designed for use as a fire safety education venue for schools wanting children to learn how to be safe with fire.

To make a booking for the bus phone Gill Heisy 0427 381 683.



Churchill Rainfall February 2014



By Bruce Stephenson

Churchill has only had rain on 5 days so far this year, two of those days in February, for a total for the month of 22 mil. That is a total of 52 mil for the year to date; compare that with the 5 mil total back in 2009 when everything was so much worse.

Let's hope we get some good autumn rains in the next few months.

2014 Advertising Price List

Effective January 1, 2014

No.	Size	\$	10% discount* 1, 2
1.	Full Page 7 column - 26cm x 38cm	302.00	272.00
1a.	Full Page Colour	535.00	482.00
2.	Half Page 7 column - 26cm x 19cm	255.00	230.00
2a.	Half Page Colour	325.00	293.00
3.	4 columns 14.8cm x 19cm	135.00	122.00
4.	7 columns 26cm x 8.5cm	135.00	122.00
5.	3 columns 11cm x 14.5cm	98.00	88.00
6.	3 columns 11cm x 8.5cm	54.00	49.00
7.	2 columns 7cm x 6.5cm	37.00	33.00
8.	2 columns 11cm x 4cm	37.00	33.00

* 1. Book and pay for six straight monthly advertisements for the year - 10% discount. OR
 2. Book six non-consecutive advertisements - seventh and subsequent advertisements 10% discount.
 TO BOOK YOUR ADVERTISEMENT PLEASE CONTACT
 RUTH PLACE OR TRACEY BURR
 03 5122 1961 OR 0422 823 179

Churchill & District News is a not for profit organisation. Staffed entirely by volunteers. Published 11 times in 2014. February to December. (See Below)
 Advertising in Churchill & District News supports your business and your community. Churchill & District News reaches readers in Churchill, Yinnar, Yinnar South, Boolarra, Hazelwood North, Hazelwood South and Mirboo North.
 It pays to advertise in your local community newspaper. Something different? We have some great sponsorship packages to promote your business or we can tailor a package to suit you . . . Sponsorship packages currently available for Churchill and District News: Junior Fishing Competition, Writing and Poetry Competition.

Deadlines and Submission Dates for 2014

Issue	Submission Dates	Publication Dates	Issue	Submission Dates	Publication Dates
February	Thursday 30 January	Thursday 13 February	October	Tuesday 30 September	Thursday 16 October
March	Friday 28 February	Thursday 13 March	November	Thursday 30 October	Thursday 13 November
April	Sunday 30 March	Thursday 10 April	December	Sunday 30 November	Thursday 18 December
May	Wednesday 30 April	Thursday 15 May	Submission of Articles: Articles can be emailed to: cdneditorial@aussiebb.com.au - Mailed to: PO Box 234, Churchill, 3842		
June	Friday 30 May	Thursday 12 June	OR Put in one of our collection boxes at: Churchill Post Office and at the Co-Operating Churches.		
July	Monday 30 June	Thursday 17 July	Advertising enquiries can be emailed to: cdnadvertising@aussiebb.com.au		
August	Wednesday 30 July	Thursday 14 August			
September	Saturday 30 August	Thursday 18 September			

Churchill & District News, PO Box 234, Churchill VIC 3842
 Email: Editorial - cdneditorial@aussiebb.com.au
 Advertising - cdnadvertising@aussiebb.com.au
 Telephone 03 5122 1961 or 0422 823 179
 Website cdnews.com.au

It pays to Advertise in your local community!



Mathison Park



Four people turned up for the working bee, but an amazing lot of work was done.

Nails were hammered back into the board walk. The stakes and tree guards of the new plants on the Tramway Road section were checked. We are pleased with the result of the plantings. It is gratifying to see how many have survived, even with the hot summer weather they have endured. Fallen branches and other tree debris were collected and placed under the trees to help the mowing people.

Lots of rubbish was picked up.

Many people will have noticed that a white duck and a black duck have formed a partnership, and have been seen on the lake for a long time now. This year they produced a clutch of ducklings- the figure of eight has been cited. However there is only one remaining now, but it is so cute to watch the mother shepherding her small charge around the outskirts of the lake or covering it with her feathers while they are on the shore's edge.



Smart Saver

Discount variety shop

Lowest Prices in Churchill

St Patrick's Day

March 17



Wigs, Hats, Shot Glasses and Party Items

Happy Easter

FREE lollypop

for the children. (During the month of April)



ALL AT A GOOD PRICE

Shop 3 Hazelwood Village Shopping Centre, Churchill

HAZELWOOD HEALTH CENTRE

- * Family Medicine
- * Women's Health
- * Counselling
- * Industrial Medicals
- * Acupuncture
- * Visiting Physiotherapist
- * On-site Pathology
- * Minor Surgical Procedures

BULK BILLING
To all Medicare Card Holders

CONSULTING HOURS

MONDAY - FRIDAY 8.00 am - 5.30 pm
SATURDAY 8.30 am - 1.30 pm

Telephone **5122 2555**

9a GEORGINA PLACE, CHURCHILL



Medical & Aged Care Group

Caring Family Medicine



CUT OUT COUPON

Present this voucher at



and receive

10% off
your total purchase

Offer is valid for 1 transaction only and excludes prescriptions, catalogue items and already discounted products.

Offer valid to March 31, 2014. No rainchecks.

Shop 7, West Place Shopping Centre

Monday-Friday 8.30 am - 6.00 pm - Saturday 9.00 am - 2.00 pm

Telephone **5122 1390**

value, savings, choice & advice

Russell Northe



Russell Northe

Unfortunately fires have been prominent in our region from February 7, 2014 including the current Morwell mine fire. Obviously it has been a disconcerting time for many local residents and whilst the Morwell township has been significantly impacted, other towns and districts have had to endure challenges as well.

Like all community members this fire has caused a great deal of concern from residents and businesses alike, and having lived and worked in the region for the majority of my life, I do share some of those concerns.

One must acknowledge the efforts of Country Fire Authority (CFA) professional fire fighters and volunteers, the Metropolitan Fire Brigade and industry representatives who have been tackling this incident from day one.

It is a most difficult and challenging fire in awful conditions, and I'm sure I speak on behalf of the community in thanking all those who have contributed.

Supporting these crews are literally hundreds of volunteers and staff from a range of departments and agencies including CFA,

Ambulance Victoria, Latrobe Regional Hospital, Latrobe Community Health Service, Department of Health, Department of Human Services, Environment Protection Authority and Latrobe City Council amongst others. The Red Cross team have been very prominent in their support of the community and the fire fighting efforts along with other volunteers such as district nurses.

A number of supports have been put into place over these past weeks to assist with information and advice including:

- The establishment of the Moe Respite Centre at Moe Town Hall – Albert Street, Moe
- A new Community Health Assessment

Centre in Morwell, Ambulance Victoria Regional Office – 2 Saskia Way, Morwell
· A Community Information and Recovery Centre at 22 Hazelwood Road, Morwell
Additional information is also available from a range of websites including:

Department of Health www.health.vic.gov.au/hazelwood
Latrobe City Council www.latrobe.vic.gov.au
Department of Human Services www.dhs.vic.gov.au

EPA Victoria www.epa.vic.gov.au
CFA www.cfa.vic.gov.au
Again we appreciate the efforts of all those tackling this incident.

Whilst we hope this event soon concludes, there is much more to be done to assist the people of Morwell and surrounding districts following this difficult event.

On a slightly lighter note the Morwell and District branch of the Red Cross has celebrated its centenary. It's our chance to thank generations of Australians who have served the nation during times of war, disaster or personal crisis and through the blood service.

The local Morwell branch of the Australian Red Cross was founded in 1914 and the organisation is as relevant today as it was then. Currently local Red Cross volunteers are supporting our communities at the respite centre in Moe and have been working tirelessly for weeks helping out at the relief centres in Moe and Traralgon for the Gippsland fires and catering for fire fighters at the Hazelwood mine fire. We thank the Morwell and District Red Cross along with Red Cross branches throughout Gippsland for their amazing service to our community over the past 100 years.

Gippsland Carers Association Carers Support Group

This is to advise that the next meeting of the Gippsland Carers Association Carers Support Group will take place on March 26, 2014, 10am at Gippsland Disability Advocacy, 8 Hopetoun Avenue, Morwell.

People who provide care for a loved one with a disability are invited to attend, to share a cuppa and chat with others like

themselves in a welcoming and non-judgemental environment. By request, this meeting will feature a visit by Alan Worthy of Latrobe Valley Funeral Services who will be able to answer questions about what to do when it comes to organising a funeral.

For more information, please ring Dot Kitwood on 0402 457 241.

Latrobe City to lobby for development of innovative technology in the region

Latrobe City to lobby for development of innovative technology in the region

Latrobe City Council is working to establish forestry, wood and paper research facilities within Latrobe City to encourage the development of innovative technology for the industry.

The natural resources, particularly plantation timber, which enable a highly productive timber and forestry industry, makes it a natural progression for the region to be made a hub for research facilities.

Latrobe City Council's mayor, Councillor Sharon Gibson, said the forestry, wood and paper industry sector which provides softwood, value-added hardwood and paper products is the fourth largest contributor to the Latrobe City economy generating an estimated \$860 million each year.

"The economic significance of the hardwood and paper

products industry is demonstrated by the ongoing presence of major timber producer HVP and manufacturers such as Australian Paper and Carter Holt Harvey within our City.

Therefore, Council is keen to build on this capability through encouraging the establishment of a place of innovation for the sector," Councillor Gibson said.

At this week's Council meeting, Latrobe City Council resolved to write to the Australian Government Minister for Agriculture, the Honourable Barnaby Joyce, outlining the Gippsland region's strong capability in timber growing and processing, and requesting that the Australian Government work with Latrobe City Council to support the establishment of the facility. In addition to writing to the Minister, Latrobe City Council will be pursuing representation at an upcoming meeting in Canberra.

GIPPSLAND

FURNITURE HOUSE GROUP



Huge Selection on all bedding

Quality Custom-made Furniture

Bookcases
Best Range
Best Prices
Best Finish



Children's Combo



Extensive range of lounges and occasional furniture



VISIT OUR SHOWROOM AT: 224 COMMERCIAL ROAD, MORWELL. PHONE 5134 1888

OR TAKE YOUR PLAN TO OUR FACTORY FOR A FREE QUOTE AT: 73 CHURCH STREET, MORWELL. PHONE/FAX 5134 2933

Friends of Morwell National Park

Hello everyone and welcome to this month's newsletter.

During the next month there will be a number of Green Walks in the Park. The program aims to get more people walking, more often, in more local parks, state parks and bushland reserves. It is a Heart Foundation initiative, and further information about the range of Green Walks is available at <http://www.heartfoundation.org.au/active-living/Pages/green-walks.aspx>

The walks that are planned in Morwell National Park during March are:

Tuesday, March 18

Sunday, March 30

Monday, March 31

In other news, Matt has found a native species of fish in Billy's Creek that was not on record up to now. Matt had seen tupong in the lower reaches of Billy's Creek as a kid and had caught them in the Morwell River. Last month, he could have sworn he saw a pair in the pool below the weir wall. Then during an all-night mothing session he visited the weir and was convinced that around a dozen tupong could be seen resting on the bottom. Returning there with some worms and small hooks he managed to land eight. He then ventured further downstream and tried a couple of more spots but no more tupong were located.

The tupong, *Pseudaphritis urvillii* is a bottom-dweller of brackish estuaries, but also inhabiting slow-flowing freshwater streams. It is common in coastal drainages of Tasmania and south-eastern mainland from the Murray River (SA) to Bega (NSW). Usually found near the coast.

The fish that Matt caught were returned unharmed to the creek.

February Activity report

At this activity we had John, Matt, Beryl, Brenda, Wendy and Darren. The group met in the Junction Road car park and decided on a plan for the day. Our plan for the day had to take into account we had no access to the shed and no access to the tools, poisons and waders. We will need to look into getting more keys to the shed, so that we avoid this situation in the future. Luckily we could open the gates since Matt had keys to these.

The group divided into two groups. Matt, John and Darren used the chainsaw to remove some trees down across Billys Weir Track while Beryl, Brenda and Wendy undertook weed removal. The weed removal group started from the car park and worked upstream. They stuck mainly to the banks of the creek and sometimes entered the creek as far as their gumboots would allow. Fortunately the creek is low after the recent dry spell. They found some thick patches of ivy that will need spraying to be fully removed.

The other group collected the chainsaw and then drove a little way down the track to the first tree, which had fallen across the track. A few more trees had come down further along the track, so these were also



Pseudaphritis urvillii - Photograph by Matt Campbell

removed. The group travelled to the weir, but found no more trees down in the second half of the track. They then headed up the Lodge Track to the site of the old lodge. John has been researching the history of the park and Matt was able to help him locate the old lodge site. Matt regularly travelled around this part of the park and the creek areas as a child.

The groups met up and travelled back to the car park for lunch. Towards the end of lunch the wind became cold and there was a hint of rain in the wind. The group decided to end the day then. At the next activity it would be good to have the pole mounted camera to check the bat boxes.

Over summer there has been work done on the Grand Strzelecki Track. The track has been widened and creek crossings improved. Along the track a vehicle can now travel to near the park boundary. The large rocks from the creek crossings and the steep grades into some of the crossings have been removed. The depth of each creek crossing is no more than a foot in depth.

March Activity

Sunday March 16

The group will meet at 10.00am in the Junction Road car park. The group will work on two tasks – one group will use the chainsaw to clear Stringybark Track and put holes into the bat boxes, while the other will work upon weed removal along Billys Weir track and from Billys Creek. You will need to bring clothing and footwear suitable for the weather conditions on the day.

Young people in Latrobe to benefit from grants

Young people in Latrobe will be more involved in local decision-making, thanks to \$30,000 in Victorian Government funding.

Minister for Youth Affairs, Ryan Smith and Member for Morwell, Russell Northe announced funding for a Local Government Youth Inclusion Grant that supports the council to actively engage young people in local decision making.

"The grant helps young people get involved in their local community, have a voice and be valued when it comes to local government decisions that impact them," Mr Northe said.

"This funding is further evidence that the Government is committed to providing opportunities for young people to have their say on important issues in their local community.

The \$30,000 will go towards Latrobe Council's development of a Charter Resource Guide and Strategy that will embed youth engagement into its operations. The funding will also support the Council's engagement with local secondary schools, parents and other local government agencies."

Mr Smith said the Government recognises the importance of regional and rural young people being

involved and contributing to the development of their community. "We know that young people who feel connected with their local community are more likely to remain involved and be an active contributor," Mr Smith said.

"Through the announcement of this funding, we're looking forward to seeing more young people involved in the Latrobe community and making a difference.

Young people are very important assets to our communities, so it's important that we make sure they have opportunities to be actively involved."

The Local Government Youth Inclusion Grants are part of the Government's \$3.2 million Shape It! strategy, which strengthens the sense of connection and belonging that young people have with their communities in rural and regional areas.

Since 2012, 23 Local Government Youth Inclusion Grants to the value of \$690,000 have been made available through Government funding. A funding for a further five Local Councils will be made available in July.

For more information on the Government's Youth Programs visit www.youthcentral.vic.gov.au

JB COMPUTERS

71A George St, Morwell 3840 (Opp. Bendigo Bank)
Ph: 5133 7617 / www.jbcomputers.com.au

**PRINTER
INK
CARTRIDGES**

from

\$5.95

100% COMPATIBLE
FOR
EPSON, HP AND
CANON

NEW PC + LCD, \$598
REPAIRS, VIRUS REMOVAL, UPGRADES
LAPTOP AND PC PARTS,
NOTEBOOK REPAIRS
UNIVERSAL LAPTOP CHARGER - \$59
TREND INTERNET SECURITY - \$49 (3
USER)
USED PC from \$150, USED LAPTOP \$250
DIGITAL CAMERA ACCESSORIES
CHEAP DVD/CD DISKS AND COVERS, ETC.



General Meeting and Community Forum

5.30pm, Tuesday March 18, 2014

Board Room, Building 9N, The Gippsland Enterprise Centre,
Federation University

(Green Inc) McDonald Way, Churchill

Topic: Planning for Churchill's 50th Anniversary

Guest Speaker: Ruth Place, Churchill & District News

Come along and hear what Churchill & District News

is planning for our 2015 celebrations

- What will your community group or local organisation be doing in 2015 to celebrate Churchill's 50th Anniversary?
- Share your thoughts and ideas with others.
- Start planning as a community now!

All local residents and stakeholder representatives welcome.

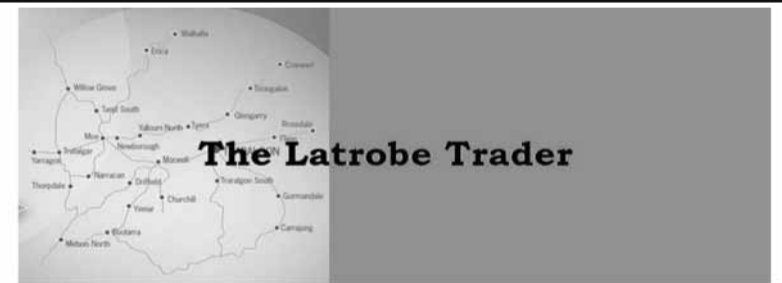
Tea & coffee provided.

Please note: This is a one hour General Meeting and Community Forum.

It will be followed by a CDCA Committee meeting,
at which observers are welcome.

Contact CDCA at PO Box 191, Churchill 3842
Phone 5122 2997

or email: mgcdca@hotmail.com



What is it?

- The trading magazine that allows you to advertise for absolutely FREE – no catches
- It will be published on Friday each fortnight beginning in April 2014
- It will be available for purchase from Service Stations, Stores and Newsagents across the Latrobe Valley area
- Simply email, phone or text your advertisement to sell your unwanted and unused goods

It is designed for you and completely free to advertise!

- Are tip fees too hefty? Well advertise your unwanted item for sale or giveaway and let your trash become someone else's treasure
- Having a garage sale? Advertise here for free!
- Lost or Found something – let people know here
- Are you looking to buy – advertise in the Wanted section.
- Do you have a service you offer? Let people know in The Latrobe Trader

The Latrobe Trader is the cost effective trading magazine designed for the people in The Latrobe Valley area.

First deadline to advertise is midday Monday 31st March 2014. Simply phone and leave message or text 0458 541 081 or email thelatrobetrader@bigpond.com. Details required for advertisement are category (eg. cars, appliances garage sales, wanted), details, price & telephone number.



AVAILABLE FOR PURCHASE APRIL 4, 2014

Church News

Church Times

Co-Operating Churches of Churchill

Rev. Brenda Burney
Willams Avenue,
Churchill.
Tel: 5122 1480

Glenda and Ian Combridge
Tel: 5166 1819

Sunday Service: 9.00am

Lumen Christi Catholic Church

35 Walker Parade, Churchill
Tel: 5122 2226

Father Francis/Father Darek

Saturday: Mass: 6.00pm

Sunday: Mass: 9.00am

1st and 3rd Sundays:

Yinnar: Mass: 10.30am

2nd and 4th Sundays:

Boolarra: Mass: 10.30am

Boolarra/Yinnar Co-Operating Parish

Week 1 - 11am at
Christ Church Boolarra
Ang. HC

Week 2 - 11am at
Christ Church Boolarra
Ang. PPP

Week 3 - 11am at
Uniting Church Yinnar
U C A. H C

Week 4 - 11am at
Uniting Church Yinnar
UCA Service of the Word

Week 5 - 11am at
Yinnar South Anglican H C

Churchill Christian Fellowship

Maple Crescent, Churchill
Sunday: 10.00am

Co-Operating Churches Snippets

Worship services at the Co-operating Parishes of Churchill, Boolarra and Yinnar are inspiring and meaningful.

Our All Age Worship service had the theme of "You are the light and salt of the world". The Christian light which is inside us is encouraged as we worship and have fellowship together, but is to be taken out with us into the world to shine and show God's love to all we meet. Salt is used to preserve and add flavour. Our saltiness should also be evident in our lives and relationships.

A Seder meal was held early in the month. A Messianic Jew, Barry, came and walked us through the Passover meal.

He, along with other Jews, have come to believe that Jesus really was the Messiah. It was a very ritualistic ceremony with deep meaning and focussed on God's goodness.

It was the first Coffee Connections for the year with the January one cancelled due to the horrifically hot weather. People were asked to bring and share



the story behind their choice of a significant piece of jewellery. The stories were very varied but all most interesting, with family connections and sentimental value big among the reasons.

The Ladies Fellowship have had their planning day for the year, and also held their very moving commitment service, in which each member took a part. Reverend Brenda celebrated Holy Communion during the service.

The Congregational meetings were held toward the end of the month where each congregation chose their congregational meeting leader and secretary.

Junior Youth Group began their year's activities with outdoor games, devotion and tea!

For March they will be doing messy games!

Easter Services

Co-Operating Churches

Tuesday April 15: Tenebrae with Lumen Christi 7.30pm at Lumen Christi

Thursday April 17: Maundy Thursday Service at 7.30pm at Boolarra

Friday April 18: Good Friday Service and Walk of Witness -

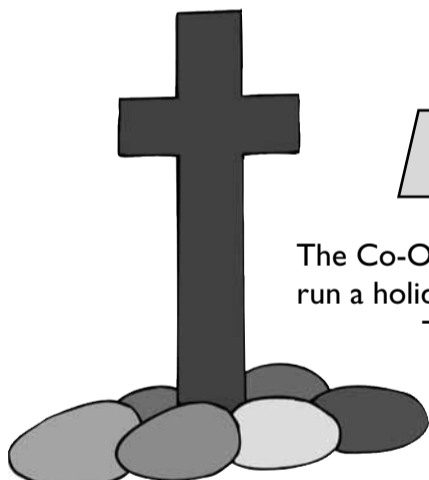
Ecumenical, Co-Operating Churches Churchill.

Good Friday Walk of Witness at Yinnar - Ecumenical.

Sunday April 20: Easter Services at Churchill at 9am and Boolarra 11am Anglican Communion.

Pest Control Services - I & G Combridge

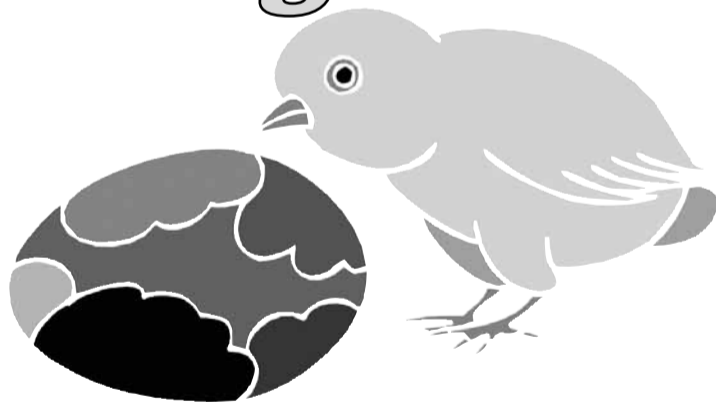
5122 1797 - THE TRUSTED NAME IN 20 YEARS - 5122 1797



Co-Operating Churches in Churchill, Boolarra and Yinnar

Holiday Program

The Co-Operating Churches in Churchill, Boolarra and Yinnar will run a holiday program in the school holidays on Monday April 7 and Thursday April 10 at the Church on the corner of Williams Avenue and McDonald Way Churchill, between 10am and 12 noon. This program is for primary school age children. The program will include games, the Easter Story, activities, and a snack and drink.



This is a FREE program.

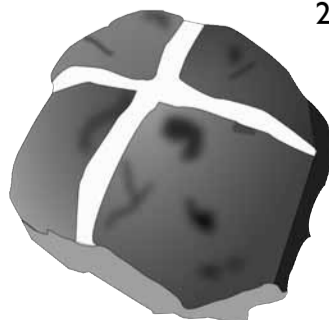
The program will be run by Minister Reverend Brenda Burney, Ruth Place and other volunteers with Working With Children Checks. Your child will need to bring a signed and completed registration form which will include medical information.

Please fill out the Expression of Interest opposite and drop it off at the eastern side door post box of the Church, or ring Reverend Brenda on her mobile 0439 610 206 or Ruth on 5122 1961 by

Thursday April 3

Please Note: Children can only participate in the program if the required forms are presented on arrival.

Children must be dropped off and picked up by an adult. Children will be required to be signed in and out, if they get picked up.



Co-Operating Churches in Churchill, Boolarra and Yinnar

Holiday Program

Expression of Interest REGISTRATION FORM

Name

Address

Phone Contact.....

Age

Churchill Lionesses



By Pauline Prowse

Another year has begun so a busy time is ahead for us.

The rose garden at Hazelwood House has survived our very hot summer very well, all worth the extra time and effort put in by our members.

Six of our members travelled on February 21, to Millicent in South Australia for the annual "Breakaway", a gathering of Lionesses from all over

Victoria and eastern South Australia.

A great time was had renewing friendships with Lionesses from the other clubs.

We will be travelling to Yarrowonga next year, and we are all looking forward to that.

We are still providing Emergency Packs to Latrobe Regional Hospital, and we have some very busy knitters making baby clothes, rugs etc.

Churchill Lions



By Sam Gillett

Churchill Lions and Lionesses started the month catering for the Home and Outdoor Expo at Kernot hall.

The weekend of fires resulted in Churchill Lions catering several times for the CFA and MFB firefighters, serving up breakfasts and dinners to the valiant firefighters who kept the flames away from our towns.

Back to school day at Churchill Primary saw the Lions BBQ van present.

Upcoming events that Churchill Lions will be

involved in include the RACV tour at Gaskin Park, which will see several vintage vehicles descend on the venue.

Churchill Lions meets on the 1st and 3rd Wednesday of each month, and can be contacted by email at churchill.lions@gmail.com.



CHURCHILL & DISTRICT NEWS

Our new website has all your information about the Churchill & District News, Previous Issues, Advertising Enquiries, Competition Details. Please visit . . .

www.cdnews.com.au

Collectibles – all types

Full embroidery Services - logos, caps, shirts, etc.
Free Set Up

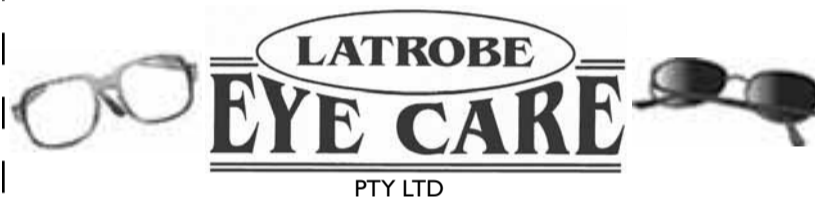
Bring in this ad for the Royal Albert Old Country Roses trio (cup saucer and B&B plate) for \$40.

Find us on facebook 



 **Embroideries & Collectibles**

236 Commercial Road Morwell 3840. Mobile 0417 670 160
Email: jm@embroideries.com.au



13 George Street Morwell, 3840

Tel: (03) 5134 2555 Fax: (03) 5134 3109

Providing a Complete Service to the Community

GET READY FOR SUMMER!

Present this voucher for **15% OFF** the latest range of Trent Nathan, Bolle, Charlie Brown and Orotan sunnies.



Churchill Town Safety Group

We urge everyone to be on the lookout for possible arsonists with all the fires that are around us and call 000 if you see anything suspicious.

The Police are still hunting for people who started the fire at Driffield on Saturday February 8.

If you know or hear anything please don't hesitate in calling the Police "asap". Also please stay safe when travelling to areas effected by smoke. Remember to have your car headlights on at all times so that you are visible to others.

FOR POLICE ASSISTANCE, RING 000



Police advise members of the public that, if you require police assistance, call 000.



The police communications operator will be able to assess your need and either send a police vehicle, relay a message or find out when the police station will be open.

CHURCHILL & DISTRICT NEWS

CALLING ALL SECRETARIES!

Churchill and District News invite you to send your news to us for publication each Month

Copy and advertising can be dropped off to Churchill Post Office or east side door of the Co-Operating Churches, Williams Ave, Churchill
Articles and photos - Email: cdneditorial@aussiebb.com.au

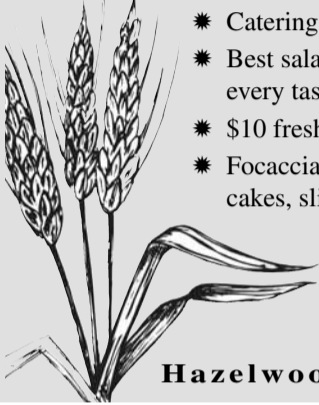
Publication Dates

(Deadline for submission of copy and sport results is the 30th of each month)

CHURCHILL & DISTRICT NEWS

The Churchill & District News is looking for volunteers. We are looking for people who are interested and would like to be involved in advertising !! We would like to hear from you! Please ring Ruth on 5122 1961

Churchill Hot Bread Bakery



- * Catering
- * Best salad rolls for every taste.
- * \$10 fresh filled cream sponges daily.
- * Focaccias, sandwiches, pies, sausage rolls, pastries, cakes, slices, tarts, biscuits, slushies and smoothies.

Free donuts with every regular or large cappuccino, latte or chai latte

OVER 30 YEARS EXPERIENCE

Phone 5122 3255

Hazelwood Village Shopping Centre



By Leo Billington

The Hazelwood Rotary Club continues to maintain its interesting and varied range of activities working directly with the community, while providing exposure for its members to a range of different topics.

Club member and Past President Margaret Palmer, has maintained close links with the community of the Tasman Peninsula in Tasmania, since their disastrous bush fires from early 2013.

Margaret has sourced funding assistance to help a local group going to the Peninsula on March 12. It will be managed by Traralgon South resident, Peter Ollorenshaw, and will consist of Ken Walker, a teacher from Kurnai College and five students. The group, working in the Murdunna area, will be building a three sided timber and iron horse shelter and a double colourbond garage/shed from a pre-purchased kit.

A team of Year 12 Agriculture Studies students from the Tasman District High School will also be part of the working group together with their teacher. The Tasman Rotary club will be catering for the group at lunch times at a local park. It is hoped that an inter-college relationship may be fostered between the students from their area and Kurnai College.

Guest speaker, Easy Emergency Management Services Managing Director, John Ballard revealed some basics of risk managing a scenario focused on "if there were a bomb in your building and you were all going to die, how would you deal with this? Have you or your staff had training in this area?"

John pointed out that since 9/11, globally, everyone is on high alert from bomb threats, but the fact is that Australia has been spared the fanatic effects of terrorism so far.

Our guest speaker on February 17 was Maria Rodda from Traralgon. Maria initially trained as a nurse and following employment at various Victorian hospitals, Maria then moved to Latrobe Regional Hospital.

At LRH, for 11 years, Maria was the hospital's dementia nurse specialist. Several years ago, Maria was co-ordinator of the Commonwealth government funded Gippsland Pathways for Dementia program which provided education to staff of aged-care facilities throughout Gippsland.

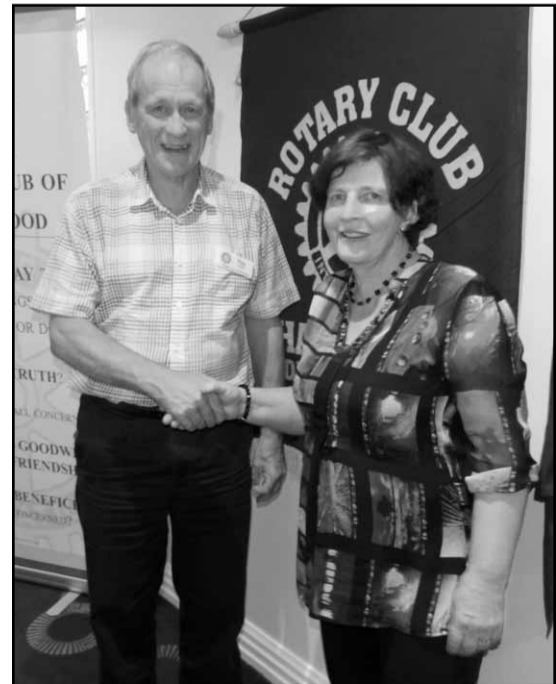
This program continued for seven years with education being provided to over 2000 participants. Maria focussed on demystifying dementia, an illness now commanding a significant level of public exposure.

Three students and two staff members from Yinnar South Primary School spoke about their garden environment within the school grounds, which the staff, students and their families tend.

There is a vegetable garden from which produce is gathered and enjoyed by the school community. Future plans to enhance this program include the installation of a greenhouse and a garden shed. The greenhouse will be used to grow vegetables for the community's use, and seedlings which Landcare could use in the local area.

Combining with volunteers from the community, Churchill Scout Group and Co-operating Churches in Churchill, Boolarra and Yinnar, Hazelwood Rotary was involved in Clean Up Australia on March 2 through the Eel Hole Creek precinct.

There may be Year 11 and/or Year 12 students who wish to become involved in Rotary activities. One popular program is Model United Nations Assembly (MUNA), a great project which enables involvement with local school students, and builds



international understanding, therefore giving students the opportunity to expand their knowledge of the workings of the United Nations Assembly and the countries they represent. The closing date for registrations is March 21.

If interested and wanting to learn more details about Rotary sponsorship for MUNA, please contact Hazelwood Rotary on 0458 661 848.

A reminder for everyone, May is Bowlscan month, another nationally promoted Rotary project.

Please visit our Facebook site to see the variety of activities involving Hazelwood Rotary.

Now here to help you:

Make the right move



GIPPSLAND

- ✓ Purchase your home.
- ✓ Refinance your home.
- ✓ Consolidate credit cards and personal loans.
- ✓ Insure your home.
- ✓ Purchase your motor vehicle, truck, boat, machinery, etc.
- ✓ Purchase your investment property.

With our Panel of 27 lenders.

We do not charge a fee for our services

Please contact Leon Azlin on 5122 1155 or 0437 222 004 or visit our Office located at Shop 13, Georgina Place, Churchill



FAMILY FUN DAY

Gold coin entry

SATURDAY 29TH MARCH 10am till 4pm

Twin city archery club, Toners Lane, Morwell

- RAFFLES
- DRINKS
- JUMPING CASTLE
- CLOTHING
- ARTS AND CRAFTS STALLS
- CHAIR 'O' PLANE
- MECHANICAL BULL
- POP CORN
- FACE PAINTING
- ARCHERY DISPLAY
- COME AND TRY
- EMERGENCY SERVICES DISPLAYS
- HANDBAGS
- CUP AND SAUCER RIDE
- WAGON RIDES
- FAIRY FLOSS
- FOOD STALLS
- HENNA BODYART
- JINDILICIOUS GOURMET TREATS
- ZORB BALLS
- SNOW CONES

GAMES (GOLD COIN ENTRY):

SACK RACE, EGG AND SPOON RACE, 3 LEGGED RACE, WATER BALLOON CATCHING AND GUMBOOT THROWING.

PRIZES FOR WINNERS.

For further info call:

Tammy on 0429857151 or Chantel on 0407558843

Or email: pr@twincityarchers.com.au

Australia Day Award - Jack Vinall

Jack Vinal was honoured with an Order of Australia award on Australia Day.

Jack Vinall grew up on a dairy farm at Driffield, becoming a dairy farmer in the area, with his own property. From early manhood Jack became involved with supporting his community.

He started first with involvement in Young Farmers on a local level in 1963-64, then for Gippsland, and finally State representation. Jack was the foundation president of Gippsland Young farmers.

A group of friends and colleagues in Young Farmers, the footy club, and school friends encouraged Jack to run as a candidate for the West Riding of Morwell Shire Council, which had representatives who were mostly in their 70's and 80's. Jack brought a fresh young approach to council matters.

From these beginnings Jack has gone on to serve his community in an amazing variety of ways.

Local Government-Shire of Morwell and Latrobe City- 30 years of service

At age 33, in 1964, was elected to Morwell Shire Council. President of Morwell Shire Council 1970-71, 1971-72, 72-73, 1980-81, 85-86.

Mayor of Morwell City 1993-94 and his final year of service to Morwell

Amalgamation of South Gippsland Shire Commissioner 1995/96/97

Community Activities-Foundation President of Latrobe Valley Arts Centre

President Strzelecki Boy Scouts District

President Advance Latrobe Valley Association

Foundation President, Region 10 of the Grants Commission, President greater Gippsland

Deputy Chairman Latrobe Regional Commission Commissioner Hernes Oak Water Trust (14 years)

Chairman Traralgon Division (Gippsland) of the Traffic Control Authority Committee.

Member of -Interim Committee Latrobe Valley Planning Authority

Latrobe Valley Airfield Committee (12years)

Yallourn Storage Dam (6years)

Council Delegate to the Gippsland Water Utilisation Committee.

Founding member of fund raising organisation for Mitchell House project for senior citizens

Member of Morwell Lions Club

Justice of the Peace

Insurance Inspector with City Mutual Life Society Silver badge Award 1977-78 City Mutual Life Society

Community member Gippsland Lakes Study

Industry

Chairman of Directors and Director of Moe and Drouin Company Co-Operative Dairy Company (19 years)

Council representative on Latrobe Valley regional Committee in 1986, seeking jobs for employees of 'Valentine Lee', 'Kayser' and 'Exacto'

Member of Committee, Driffield State School

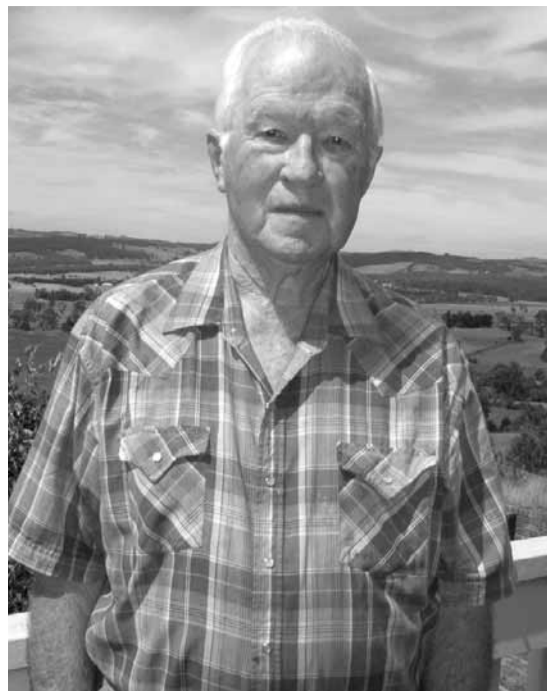
Member of Committee, Yinnar Young Farmers Club 1948.

Member of Yinnar Young Farmers Club 1948

President of Yinnar Young Farmers Club 1949, 50, 52.

Foundation President, Gippsland District Council-Young Farmers

Attendee, 50 year re-union Yinnar Young Farmers Club 2012



National Party

State President, Victorian Country Party 1971-73

State Treasurer 1975-87

President, Morwell Electorate District Council 1960-67

Foundation Secretary, Morwell branch (14 years) From age 28- Central Councillor for 30 years

Sporting Bodies

Football-

Keen exponent of Australian Rules football, as player, captain, and coach of teams: Member of Yallourn, Morwell, and Footscray teams for a total of over 300 games.

President of Morwell Football Club (1978,79, 80, 81, 82.)

Cricket- club member Morwell Cricket Club 1948-70

Team captain 1961-64.

Represented Central Gippsland at Country Week and in inter-association games

Vice President of Central Gippsland Cricket Association for many years.

In 1967, was Chairman of the Indian Cricket team tour of Gippsland

Life member of Morwell Cricket Club

Lawn Bowls- President Yinnar Bowls Club

Jack says he has enjoyed his community involvement very much.

"It has not always been easy," he states, "Especially when we were farming, trying to fit in engagements between milkings." But he loved meeting people and doing things for the community. "There are things you want to do.

They do not always work out, but you never stop trying," says Jack.

This is the mark of this man. Doing things which opened doors for the community was a great reward for Jack.

He is particularly thrilled that his award has been given in merit of his Gippsland -wide efforts of which he is proud.

During his times in council, and with other organisations, Jack and Betty, his faithful wife of over 60 years, say they have rubbed shoulders with people in high places but have found them to be ordinary people doing an extraordinary job.

Jack says he could not have done what he did without the support of Betty and his six children who pulled their weight with helping on the farm to make it possible.

Jack is rightly proud and pleased with his family and thanks them for being there for him.

COMMUNITY SINGING

At LUMEN CHRISTI Eco Centre,
Williams Avenue, Churchill

COST - \$3 and a plate to share

(Tea/Coffee/Cordial provided)

every 3rd SUNDAY OF THE MONTH

3.00 pm - 5.00 pm

ALL WELCOME! More information:

Yvonne 5122 2573 or Michelle 0411 494 859



Valley Trophy Centre

60 George Street, Morwell

*Engraving *Personalised Coffee Mugs *Name Badges *Giftware and Pewter *Glass Engraving *Large Trophy Display



5134 1493

FAX 5134 1334

www.valleytrophycentre.com.au



Specialising in

- New Home Installations • Digital Antenna Systems
- Fix Ups • Additional TV Outlets
- Pensioner/Seniors rates

ALL WORK GUARANTEED

Churchill and surrounding areas

Mathew 0447 778 182

Valley TYRE Service



Don't be a bunny this Easter.

Come into Valley TYRE Service and have your tyres checked for a safe Easter.

42 Vestan Drive,
Morwell

**Telephone
5134 1388**

Fax 51339033



Old Time Family Dance

Jeeralang North Hall

Jeeralang North Road

Friday, March 28

Prize for best Easter Hat



Our apologies for Feb dance due to unforeseen circumstances

Dancing from
8.00 pm to 11.30 pm
Music: Ken and Alice

Admission: \$8.00
Extra Prizes
Supper supplied

For more details please ring Judy 0402 923 897, Heather 5166 1494

Latrobe Valley Field Naturalists



Barking Owl, a rare species found in Long Forest. The photo was taken by Trevor Pescott.

“Birds of the Long Forest”

Marilyn Hewish, author and the 2013 winner of the Australian Natural History medallion, will speak on “Birds of the Long Forest” on Friday, April 25 at the Latrobe Valley Field Naturalists’ Club meeting.

Marilyn will describe the fascinating discoveries from her project that researched bird-watchers reports from 1889 to 2005 in the Long Forest, a small remnant area of Mallee woodland near Bacchus Marsh.

This talk illustrates that even a small patch of

bush, like the Long Forest, can repay intensive study of its birds.

The meeting from 7.30pm is at the Uniting Church Hall on the corner of Old Sale Road and Chamberlain Road, Newborough.

On the following evening there will be a spotlight walk and moth trapping at the Morwell National Park.

Visitors are most welcome to both activities; there is no charge. For more information phone 5634 2246 or 5127 3393.

The Yinnar Whack-It! nears completion

Students from Yinnar Primary School and members of Cooida Hill – a Traralgon community service provider for people with a disability – will try out the Yinnar Whack-It! – an incredible mobile, multi-sensory musical sculpture currently being created for Yinnar’s Fiddlehead Festival.

The designers have invited the local children and people with a disability to advise them as to how well the Whack-It! Works, and how user-friendly it is, to ensure that the sculpture will be accessible to all abilities when it makes its debut appearance at the Fiddlehead Festival on Saturday March 15 at Yinnar.

With funding from the Australia Council for the Arts, three local artists – Anthea Williams, John Abery and Dana Ashlakoff and two musicians – Dan Boothman and Steve Schultz are nearing the finishing stages of building the Whack-it! which incorporates drums, bells, horns, strings, chime bars, and the entire

insides of an old piano.

It is multi-coloured and multi-textured, has wings and wheels and is rigged for amplified sound as well as percussion. It can be played on by many people at once, creating a magnificent cacophony as well as orchestrated performances. The addition of a smoke machine ensures that it will make a dramatic, fun and fantastic visual, aural and textural centre-piece for the third year of the now well established community music festival.

The try-out will take place at John Avery’s workshop in Hazelwood South under the supervision of local musician Steve Schultz – a Newborough-based percussionist who is well known in the region’s schools for his exciting drumming workshops.

For further information about Fiddlehead Festival visit our Facebook Page: <https://www.facebook.com/fiddleheadfestival?ref=hl>

Community Garden in Churchill

By Jean Baudendistel
Churchill Neighbourhood Centre.

After meeting with representatives from the Churchill Cooperating Churches, we’re calling for expressions of interest to make up a steering committee to establish and manage a Community Garden in Churchill.

Initially on a small piece of land at the Hub, and then depending on growth expand to vacant land at the Cooperating Churches.

We also have a great deal of interest from the kindergarten as the plan is to teach healthy eating to parents.

It is also our intention to engage the youth from the local schools from the ground up, with the hope that they will take some ownership of the garden.

Phone the Neighbourhood Centre on 5122 2955 or get in touch with the Cooperating Church, Williams Avenue.

Gippsland Medicare Local asks the community to get involved in the health discussion

Gippsland Medicare Local (GML) is seeking feedback from community members across Gippsland on health and wellbeing issues through a survey.

The survey provides Gippsland residents with the opportunity to share their opinions on health and wellbeing issues in the region, availability and access to programs and services, and suggestions for improvements.

Participants who get involved by providing feedback through the survey go into a draw to win one of 20 \$50 vouchers. Vouchers will be available for the purchase of fresh local produce.

GML Chief Executive Officer, Mr Peter Quigley, said the survey is a great way for the Gippsland community to have its voice heard, and to assist GML with steering health services and support through Commonwealth funding in the direction most needed.

Organisations with an interest in the health industry are also encouraged to complete the stakeholder survey form.

The information obtained from the survey will be used to inform and define Commonwealth-funded primary health care initiatives.

“The survey will contribute towards an improved understanding of the needs of the Gippsland community. We want to make sure we are delivering health programs and services, filling gaps and addressing the issues that our community requires, that’s why the feedback is so important.

An interim health needs report compiled in June 2013, identified major health considerations for the Gippsland community, including higher percentages of obesity and cancer and a lower life expectancy, as compared to the Victorian average.

GML is committed to working with the Gippsland community in identifying health and wellbeing needs and issues and securing funding to address these needs.”

The findings of the survey will be published on the GML website in June 2014.

The surveys can be accessed on the GML website, <http://www.gml.org.au/community-information/comprehensive-needs-assessment/>. Any one residing in Gippsland and over the age of 18 is welcome to complete a survey.

More information

In 2014, an interim CNA report revealed major health and population issues such as: geographical isolation, socio-economically disadvantaged communities, ageing population, poorer health outcomes for Aboriginal and Torres Strait Islanders, Childhood vulnerability, lack of dedicated youth services, high rates of family violence, lower life expectancy for males, premature mortality, higher prevalence of smoking, drug and alcohol abuse, high portions of obesity, high percentages of disability, type 2 diabetes, high incidence of cancer compared with Victoria average, coronary heart disease, respiratory disease, mental health, long waiting times to see general practitioners, high presentations to hospitals with primary care type problems and an identified need for information about primary health services across Gippsland.

IAN SAMSON PAINTING SERVICES

ABN 19 394 952 822

TRADING LOCALLY FOR OVER 30 YEARS.

Covering all aspects of Decorating

Churchill, VIC 3842

0408 594 379

03 5122 1189

Churchill & District Lions Club

Meet 1st and 3rd Wednesday of each Month



Contact

Bob Lowick

Phone:

0408 377 781

Ambruel Healing Therapies

ASTROLOGY and TAROT READINGS

Do you need assistance in finding direction in your life?

Are you seeking answers on what to expect in the next 12 months?

ASTROLOGY / TAROT READINGS CAN ANSWER THESE QUESTIONS FOR YOU!

REIKI HEALING

Or are you seeking stress relief, relief from pain, illness?

Reiki is a natural pain free, method of healing

Why not make a positive change to your life!

CALL Angelika (Astrologer, Healer and Practitioner) on 0402 528 429 today!

EvaLasting Touch 21 Hoyle Street Morwell

Email: angelika.lieshout@bigpond.com

Darren Chester

FEDERAL MEMBER FOR GIPPSLAND

www.darrenchester.com



THE NATIONALS for Regional Australia

Centenary theme for Red Cross Calling



As Red Cross celebrates its centenary in Australia this year, it's hoped many more local communities just like ours will make a special effort to donate to Red Cross this March to help people in crisis.

Red Cross provides care to those who need it most, from making a daily phone call to elderly Australians living alone, providing breakfast to a child who might otherwise go to school hungry, or providing safe drinking water and sanitation for our near neighbours.

In the years to come, many people will turn to Red Cross for help in times of crisis and we're determined to be there when they do.

Red Cross Calling is the time of year when local Red Cross members, community groups, schools and individuals can go to the streets, make public collections or door knock to raise money to support the every day work of Red Cross.

Morwell and District Red Cross Unit will be organising a Bunnings BBQ at Mid Valley Morwell and encourages everyone to come down and support Red Cross by purchasing a sausage and onion snack and a soft drink.

Red Cross Calling in Morwell

What: Morwell and District Red Cross Unit will hold a Bunnings BBQ
 When: Saturday March 22, 2014
 Where: Mid Valley Shopping Centre,

Princes Drive, Morwell
For more information about Red Cross Calling or to make a secure online donation visit redcrosscalling.org.au or call 1800 811 700.
Morwell and district Red Cross unit

On Friday February 28, members of the Morwell and District Red Cross unit and other units in Zone 8, looked on while Latrobe City Mayor, Sharon Gibson and Chairperson of the Morwell and District unit of Red Cross, Anne Maree Vella, raised the Red Cross flag.

The flag is to fly over Legacy Place as part of celebrations to mark 100 years of Red Cross in Australia.

Latrobe City is flying the flag for 100 days .One day for each year of service of Red Cross. It also marks the start of Red Cross calling during the month of March.

For 100 years Red Cross has been helping people in Australia and beyond in times of need and emergency.

In August 1914 Red Cross began in Australia nine days after the outbreak of World War One.

By World War Two, with a population of 7 million, nearly half a million people were Red Cross members.

Today one million Red Cross members, volunteers, blood donors and supporters make a difference in the lives of people in need.

In emergencies like flood, fire, storm or cyclone Red Cross plays a vital role.

In the past three weeks local Red Cross members have been involved with assisting people affected by the fires, catering for up to 600 fire fighters and helping at the relief and respite centres.

Anyone interested in becoming a member or volunteer of Red Cross is welcome to contact the secretary 5163 1565

Red Cross Emergency Services thank you

During the recent heat wave period, Red Cross Emergency Services have been active in supporting local councils at Relief Centres and other emergency service agencies for food and water requirements across the state.

Locally as part of this activity, Red Cross volunteers were deployed on February 8 in support of the fires in the Hernes Oak area and the Driffield fire which later spread into the Morwell Open Cut Mine.

Teams have responded to provide food and water to approximately 18,000 fire - fighting personnel from all over Victoria as well as mine staff who are responding to the fire.

The meals provided to date are into the thousands and this could not have been possible without the support of local community and businesses.

Red Cross would like to acknowledge and thank the local community and businesses and in particular the Lions, Lionesses and Bunnings.

Local Red Cross Emergency Service Teams have once again done a great job and I would also like to thank them for their ongoing support.

These volunteers willingly give their time and have a great history in supporting communities in times of need, as they have for the past 100 years.

Thankyou.

Need a HOLIDAY?

travel counsellors

Book your next holiday with confidence, at a time and place of your convenience!

Book with Matt Schmitz your Churchill based Mobile Travel Consultant.

Licence No 32777

Locally owned & operated
 P: (03) 5122 1108 M: 0466 565 723
 E: matt.schmitz@travelcounsellors.com.au
www.travelcounsellors.com.au/matt.schmitz

90% of Bowel Cancers can be cured if detected early.

Risk begins at forty.

The Facts.

- * Bowel or Colorectal Cancer is a cancer of the large bowel.
- * Bowel cancer is the second most common cancer worldwide after breast cancer.
- * It is the most common internal cancer affecting male and female Australians.
- * It is the second highest cause of cancer deaths, after lung cancer.
- * It affects 1 in 18 males and 1 in 26 females in Australia.

Easy to use Test Kits available at your local pharmacy for just \$10 during the month of May only.
Bowelscan program information 1300 779 694

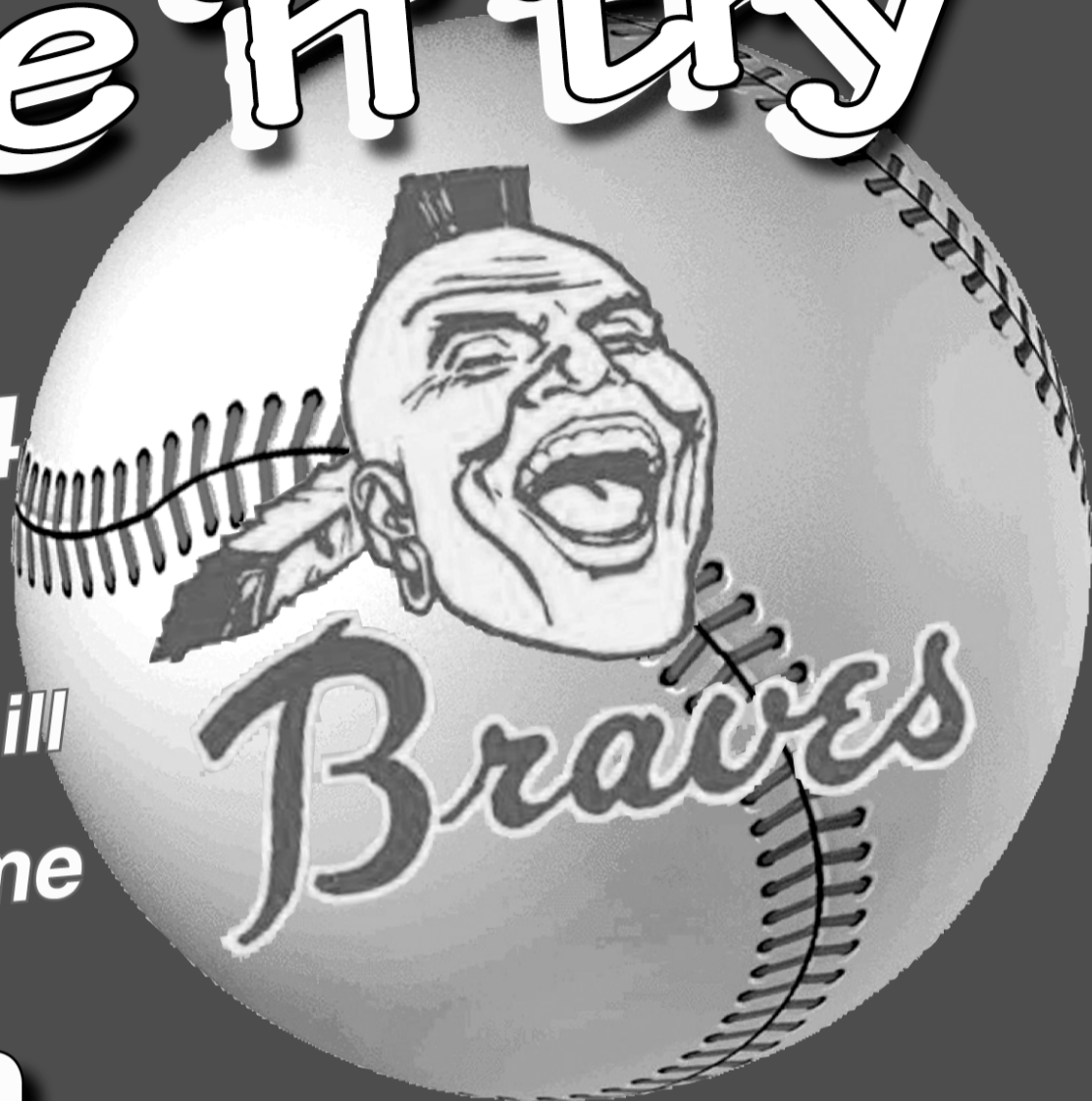
With Bowl Cancer don't wait until it's too late.



baseball come 'n' try

**Sunday,
March 30, 2014**

**Andrews Park,
Birch Drive, Churchill
Everyone welcome**



Juniors

ages 6-17 yrs

9.00 am - 4.00 pm

**Train your skills
Learn the rules
Play a match**

followed by a BBQ

Seniors 18+ welcome

- * Exercise and Fresh Air
- * Friendship * Fun *Teamwork
- *Individual accomplishment
- *You can always make a comeback

For further information please phone
Shane Gill 0481 060 577



CHURCHILL & DISTRICT NEWS

WRITING
&
POETRY
COMPETITION
2014

**Entries
Closing
April 30, 2014**

Churchill & District News

invites you to enter our

2014 Short Story and Poetry Competition

There are some great prizes.

If you have any queries or require information, conditions of entry and entry forms, please do not hesitate to contact us by email at

cdneditorial@aussiebb.com.au or

Phone: 03 5122 1961,

Entry forms and conditions are available online at

www.cdnews.com.au

Categories

1. Children's 7 and Under Short story/poem or picture story.
2. Children's 8 - 10 yrs Short Story/Poetry (illustrations welcome).
3. Children's 11 - 13 yrs Short Story (illustrations welcome).
4. Children's 11 - 13 yrs Poetry (illustrations welcome).
5. 14 - 18 yrs Short Story.
6. 14 - 18 yrs Poetry.
7. Drabble - a 100 word piece of fiction.
8. Adult Short Story.
9. Adult Poetry.
10. A Children's Story: A story written for children.

*Categories 1 - 4 will include prizes for best illustration and best presentation

Churchill & District News Short Story and Poetry Competition 2014

ENTRY FORM

Name: _____

Address: _____

Telephone: _____

I have entered: _____ Short Story _____ Poem

Title of Story(s): _____ Category _____

Title of Poem(s): _____ Category _____

I have read and understood the conditions of entry and agree to abide by them. I certify that this is an original unpublished story or poem, written by myself.

This entry form can be completed on behalf of U12's by a parent, guardian or teacher.

Signature _____

NOTE Entry Fee to be included with Entry Form.

Please make Cheques or Postal Orders payable to
Churchill & District News.

No cash please. Postage stamps accepted.

Email: cdneditorial@aussiebb.com.au

Mail entries to: PO Box 234, Churchill 3842

CONDITIONS OF ENTRY

1. All stories must have a completed entry form attached to the manuscript with a paper clip (no pins or staples). An emailed copy may ALSO be supplied for categories 5 - 10 above to cdneditorial@aussiebb.com.au
2. The author's name must only be on the entry form and not on the manuscript.
3. Entries must be original, previously unpublished work, including in social media
4. Each entry must include a title.
5. Multiple entries will be accepted.
6. Unless otherwise specified, permission to reproduce entries in the Churchill & District News or for publicity purposes will be assumed. *Copyright remains with the author.*
7. Writers will be credited whenever their writing is reproduced.
8. Entries must be received by April 30, 2014.
9. All pages should be numbered.
10. Length of stories and poems -
STORIES are to be:
*Adult: 1000 - 2500 words.
*14 - 18 years: 500 - 2000 words.
*Children: up to 500 words.
POETRY, free or rhyming verse to be:
*Adult: min. 8 lines and max. 48 lines.
*14 - 18 years: min. 8 lines and max. 48 lines.
*Children: up to 20 lines.
11. Entries will not be returned and participants should keep a copy of their work.
12. The Judges' decision is final and no correspondence will be entered into.
13. Signing of the entry form for this competition constitutes acceptance of these "Conditions of Entry".

Entries can be mailed to:

Churchill & District News Short Story and Poetry Competition,
PO Box 234, Churchill 3842

or Emailed to: cdneditorial@aussiebb.com.au

Closing Date: April 30, 2014

Entry Fees:

\$3.00 Per Short Story/Children's Story (Concession or Student \$2.00)

\$3.00 Per Poem (Concession or Student \$2.00)

Children, Under 7, Under 12 and Under 18 Categories - **50c**.

2009 Bushfires- 5 years on . . .

There have been many distressing stories about the 2009 bushfire period. It was a horrible time and we will not forget the devastation caused.

However, from the horror many positive things have evolved and this article is to celebrate those positives.

Representatives from the fire affected areas were asked to tell us what those positive things have been for their area.

Colin Brick OA from Boolarra records it this way.

Boolarra: Five years on

Immediately after the Delburn fire, and in fact before the Black Saturday fires, I wrote in an article for the Churchill News of the tremendous community spirit being demonstrated.

I believe that one of the great positive outcomes from the fires has been that it has further strengthened the sense of togetherness within the community.

In saying that, I don't wish to minimise the great personal hardship and stress that a number of individuals have endured.

Despite the best will and efforts of many people and organisations, there are still scars that in some cases may never heal.

As a whole the community has worked together, accepted the wonderful assistance of the broader community to regroup and rebuild, and moved on.

It is probably worth noting at this point that in my roles as Chair of the Boolarra Yinnar Community Recovery Committee, and as Secretary of the Boolarra Community Development Group I often heard comments (generally from people outside the community) that the Delburn fire was the "forgotten" fire and we were poorly treated compared to other communities.

My response has always been that I feel the assistance and support we have received has been absolutely wonderful, and overwhelming in its generosity.

I often felt one of the greatest dangers we faced as a community was developing a cargo cult mentality; expecting things to be delivered

and believing we had an entitlement to it, and more.

I understand this has occurred in other communities, and it is very unhealthy.

In fact we have received some wonderful additions and upgrades to the infrastructure and equipment of the town.

The Grand Ridge Rail Trail was closed for some time after the fires, but reopened with two wonderful new bridges and a great trail surface to make a lovely walk even better.

The CFA's magnificent performance in protecting our property and lives was rewarded with a new shed that enables them to operate far more effectively.

Other infrastructure improvements include the upgrade of the multi-purpose building, the Memorial Hall kitchen and sealing around the oval at the Memorial Park and construction of a Memorial Gazebo in Railway Park.

In addition we have received equipment which serves to further strengthen the community, including a refrigerated trailer, a community bus, the Koffee Kart which serves as the basis for a community enterprise providing valuable training and employment to local people.

Along with the pastoral care aspect of providing support to people in need after the fires, one of the critical aspects is to get people together, engaging socially, sometimes to discuss their experiences and sometimes to put their experiences behind them.

There were some marvellous activities put on in Boolarra by a wide range of groups and individuals.

Amongst my favourites were film nights at the footy club social rooms, very informal and great fun, the magic night, the Pamper Day, with Koko the clown and the Stringbusters, and the Moving Images, held at Yinnar ARC, which provided a photographic record of various aspects of the fire and the aftermath.

Other community celebrations included Christmas in July, street parties for fire affected streets, Vocal Nosh, garden tours, and a quadrille organised at the Boolarra Pony Club.

Shortly after the fires there was a lovely, low

key plant exchange where people who had lost plants could get replacement plants donated to them. Collectively these events served an invaluable purpose in bringing people out of themselves, and helping the community to resume "normal" operation.

However, I think what has really enriched Boolarra has been a range of diverse ongoing activities that have been established as a result of fire related support.

The development of the Old Mill Site and the associated walking tracks has been a triumph by the Boolarra South Landcare Group, and a small group of dedicated workers who have created a lovely network of paths right on the edge of town, that are widely used and greatly appreciated.

Likewise the Men's Shed is new infrastructure developed using fire funding that provides an ongoing activity focused on men, that is proven to improve their health and well being.

Other activities that have been established as a direct result of the fire is a community kitchen, where people get together to cook and share the result, and the Gourmet Girls who get away to let their hair down. What happens on the bus stays on the bus!

For the local youth there have been a number of FREEZA programs and one off events, and also, with the support of Quantum and the Salvation Army, the establishment of the Boolarra and District Youth and Space Group where the kids get together weekly for a bit of fun.

The other great thing that has occurred over the past five years has been the partnerships and friendships that have been created with supportive people and organisations. In a number of activities we have worked very closely with the Yinnar and District Community Association, and especially John Harris. John was the driving force in the creation of the joint Local Emergency Action Plan between the two communities.

The Latrobe City Bushfire Recovery Group, and especially Deb Browne and Heather Farley, have been a wonderful support during

what has sometimes been an arduous journey. Soroptimists International has been extremely generous in their assistance to a number of women's organisations in the fire affected area, and hopefully this was instrumental in the very successful establishment of a local branch of SI last year.

The Salvation Army has been in for the long haul in supporting a wide range of activities and our thanks go to Paul Gray and Jenny Dentoom for their efforts, and also to Laurie Paton, currently at DPCD, who changes departments regularly, but does not change his helpful and proactive approach to targeting help to worthwhile and needy projects.

In the end, when you forget the pain and the hard slog you still remember the fun and the friendships and the working together to create something better.

Colin Brick, OA
Secretary
Boolarra Community Development Group

2009 Bushfires - the Soroptimist Response

Samantha Brick shares her experience of initiating a Soroptimists group and how it has grown.

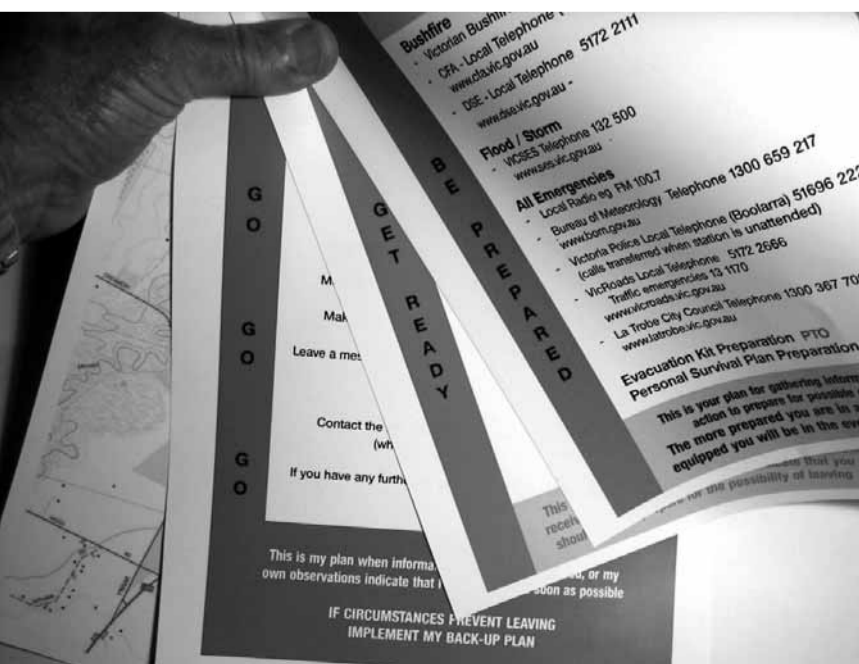
Soroptimist International (SI) is a women's service club that works to advance the cause of women and children throughout the world.

It places particular emphasis on women's access to health services and education.

Shortly after the devastating bushfires of February 2009, SI Victoria, Australia, established a Relief Appeal Committee, comprising representatives from a number of Victorian SI clubs, in response to a number of donations from Soroptimists both in Australia and overseas.

A total of \$53,866.00 from Soroptimist clubs was raised to assist women and children who had been affected by the fires.

They decided to concentrate on helping the Latrobe Valley community because the area had little publicity, and consequently less support than other areas, despite losing 11 lives, 158 homes, 425 farm buildings, 16,714 kms of fencing and 1,441 livestock.



2009 Bushfires- 5 years on . . .

The group wanted to alleviate the disruption caused to women and girls by the bushfire crisis with material, physical and wellbeing aid. This included a combination of both financial and physical contributions by members of Soroptimist International. It was also hoped that it would provide an opportunity for a lasting on-going relationship between members of the community and Soroptimists.

The Committee met regularly and undertook a number of meetings with the Latrobe Community Recovery Committee in relation to projects and funding, as well as site visits to the area. As a result a number of activities were undertaken as part of the SI Bushfire Recovery Project.

SI committed to sponsoring the Boolarra Netball Club for a period of three years. The Netball Club lost uniforms and equipment in the fire, and parents recovering from bushfires had little disposable funds to spend on netball. Netball Victoria approved first aid kits, and junior uniforms were purchased and professional coaching of the team was provided. As part of a morale boosting initiative, approximately 50 Boolarra Netball Club members visited Soroptimist House for a lunch and presentation of the first aid kits, prior to attending the Vixens game at Hisense Arena.

Many people had stressful memories of returning to their damaged homes to find the charred bodies of pets and native animals. A grant was made for the provision of a plaque in memory of animals lost and injured in the bushfire. SI members from Berwick and Mornington Peninsula travelled to Boolarra to join the local community for the unveiling of the plaque, and to provide afternoon tea for members of the local community who attended the memorial service.

Koornalla/LeRoy areas previously known for their beautiful trees and roadside plantings, were so badly burnt that the charred sterile soil had to be reconstituted before any plantings could take place. A grant of \$6,000 was provided to assist with soil regeneration, purchase and planting of appropriate trees.

Stitches and Chat group where women can share experiences and support was formed.

A grant was made to purchase two "Clax Trolleys" and a number of plastic containers for members of the group to organise the large amount of craft materials that had been donated (much of it from Soroptimists).

A grant was provided as a petty cash float for the women attending Nibble and Natter afternoons, a community bonding and sharing group of bushfire affected women organised through the Latrobe Community Recovery Committee.

Bereavement Relief through Voice Sponsorship of \$6,000 was provided to enable bereaved families to meet with a specialist counsellor once a month for six months.

A contribution was made to the Boolarra Memorial Hall kitchen upgrade. The Hall Committee needed funds for the purchase of

cookware such as pots, pans, soup pots and a large wok. Soroptimists contributed \$500 to this fund.

A contribution to the Boolarra Vocal Nosh was also made so that sessions could continue in 2011. A music student who lost her collection of music in the fires, but could not get funds to replace it, was provided with \$500 to help with music replacement.

\$15,000 was donated towards audio visual equipment for the Jeeralang North Hall, which enabled it to be used for social activities, and \$10,000 given to help provide a modern children's play area at the Calignee Hall.

Treloar Roses from Portland generously offered to donate and deliver roses to our local area, and we organised the rose bushes for affected residents to collect. 97 households received over 500 bare-rooted bushes. Residents come from the bushfire-affected areas including Boolarra, Jeeralang North, Koornalla and Callignee. Eight special standard roses were donated for the Memorial garden at Jeeralang North Hall. The donation of roses was a generous gift that helped add a little colour to the gardens of those who suffered during the Delburn and Black Saturday fires.

The aims of the Committee have certainly been met, as evidenced by these practical outcomes in a community that has shown enormous resilience in the past five years. It was an investment well-made and many friendships have been formed between the committee members and local residents.

Today, the Soroptimist International Club of Gippsland is proud to have been born out of this project. The Gippsland club received its Charter in May 2013 and now has in excess of 25 members, who live in the Latrobe Valley area. Members meet monthly at the Churchill Hotel and are involved in raising money to assist women and girls, both locally and internationally.

SI Gippsland President, Samantha Brick, said that the Soroptimist Gippsland Club will always be a special club because of its beginnings. "As members of the Latrobe Valley community, we are very grateful for the assistance provided by SI in 2009. We are now very proud to be part of the sisterhood of SI and carry on this work," she said. The club always welcomes new members and women who are interested should contact Samantha on 0427 824 722.

The good life is returning

Garry Mauger shares his memories of what has happened in the Hazelwood-Jeeralang areas.

On the Sunday following the passing though of the major fire front, blackened and shocked neighbours surveyed their charred smoky landscape struggling to grasp the ordeal they had gone through. Radio and TV reported the devastation across Victoria.

A few days on, a cluster of community members gathered for a BBQ and talked through the grim event, our feelings and

fearful moments. An embryonic sense of determination for repair and renewal started.

A Recovery Committee soon formed and the immediate priority tasks were tackled with increasing energy and purpose. Planning for the hall rebuilding commenced, and further community enthusiasm was being unleashed.

Many and grateful thanks continue to be expressed to those generous donors across Australia, and from many parts of the world, whose contributions, large and small, were the life blood which empowered and enabled the recovery efforts. Likewise the agencies whose work supported and guided the recovery efforts receive recognition and thanks.

One year on, the Recovery Committee completed its work and a Community Committee formed to continue the rebuilding and repair of the community beyond the immediate needs. Several well attended social functions were held to bring the community together, in a way not seen for many years. Some old photos and newspaper articles from a bygone area were shared. New friendships have developed. Slowly the normality of daily life has returned.

The rebuilt Jeeralang North Hall is a centre piece for community activity. The dances have returned, social events take place, community celebrations are held. Footy finals and Melbourne Cup day, weddings, birthdays and other special events are celebrated.

A Community Association has formed to continue the work of building up and supporting the community. The community now has a Local Emergency Action Plan. Tracks and trails have been marked and mapped in the local bush reserves and you will find horse riders and mountain bikers enjoying the outdoors. Training events have been conducted to enhance community skills. All now form part of a revitalised infrastructure that we share in.

A Community Safety Project has commenced, a Nature Trail is being developed, and a mammal survey is in hand, while other new initiatives are in the pipeline.

The new sense of community continues to be nurtured. The good life is returning.

Good Fortune from Bad – Positive Outcomes for Yinnar and District from the Delburn Bushfire.

John Harris and some of his associates have this to say about their area.

The Delburn bushfire of 2009 began on January 28 and 29, as three separate fires – on Ashfords Road, Creamery Road and Lyrebird Walk. Within a day the fires had breached control lines and spread easterly towards the Boolarra and Yinnar townships.

That night the three fires joined into one, renamed the Delburn Fire. When it was declared 'contained' on February 3, this fire had burned nearly six and a half thousand hectares of land. Sixteen Yinnar families on Creamery Road suffered damage to their properties and

were lucky their homes were saved.

The community of Yinnar and District has gained much from the experience of the Delburn Fire. During the height of the fire, Yinnar was the staging area for the CFA's fight to save Boolarra and the outlying area of Yinnar. Dozens of water tankers were lined up in Main Street to supply the fire trucks, as the water supply to Boolarra broke down. Firefighters were fed home-cooked meals by Red Cross members and other residents in the Memorial Hall.

As in all emergencies in country areas, the Yinnar and District community came together as a team. This team spirit continued through the recovery period following Delburn and then Black Saturday, with over 100 people attending each of the two Community Recovery Dinners held at the Yinnar Hotel. Furthermore the neighbouring communities of Boolarra and Yinnar worked together on the recovery process, and led other fire-affected areas by initiating and completing the Boolarra Yinnar Local Emergency Action Plan, the first in Latrobe City. This was a project which other communities have followed, which in turn has led to community representation on Latrobe City's Emergency Management Planning Committee.

The Yinnar and District Community Garden is another project which could not have been developed without the assistance of the Victoria Bushfire Appeal Fund, and which involves members from both Yinnar and Boolarra on the Management Sub-committee. The Yinnar and District Lions Club and Community Association have also partnered to redevelop the northern town entrance through the establishment of Stockroute Reserve, again with VBAF support.

The bushfire recovery activity worked so well because the rebuilding process was driven by locals, not by other authorities who might think they know what the community needs. This is perhaps the most valuable lesson to be learned from the Delburn and Black Saturday Fires.

Since Delburn, Yinnar and District residents have become much more aware of the danger from bushfires and have taken an interest in matters such as Neighbourhood Safer Places and Community Alerting Sirens. The Driffield bushfire this year has reminded us that even the township of Yinnar can be threatened by fire. The Yinnar and District Community Association is working actively with the new Hazelwood-Jeeralang Community Association and our CFA brigades to maintain community awareness, preparedness and involvement.

Recognising that life is not so rosy for some bushfire affected people, it is effective to focus on the overall positive outcomes achieved. It is amazing how much good has happened when we reflect on it.

From the ashes, new life can arise like the phoenix.



Professor Marcia Devlin is the Deputy Vice-Chancellor (Learning and Quality) at Federation University Gippsland.

She has a dual role as Senior Representative for the University, and is also the contact person for the Senior team at Gippsland.

Marcia's portfolio encompasses four strands

1. The Centre for Learning, Innovation and Professional Practice or CLIPP

2. Library Services

3. Academic Services

4. Aboriginal Education Centre.

1. CLIPP has two foci:-

a) Teaching Futures learning, focuses on student futures program and entails the preparation and support for new students.

This includes a program called Uni Ready. Students are given instruction in study skills, and information technology and other resources available to help them make the best of their study opportunities.

This is a free program.

In Orientation Week (called 'O' Week") the 183 students enrolled at FedUni Gippsland, will be allocated a trained mentor from the 2nd and 3rd year students who have been trained over the holiday period at Ballarat to assist these new students.

b) Teaching Futures are programs to assist staff with learning and teaching.

2. Library Services include associated services on and off campus.

These services will continue as previously. Staff learning advisors will be attached to the library to assist students with how to write

Tertiary Education made easier

assignments, prepare for exams and other needs.

3. Academic Services. Students Service Hubs have been set up at each school on campus with Student Services Officers available to advise and answer questions, or refer on if necessary.

4. Aboriginal Education Centre is a special place with specialised services for Aboriginal and Torres Strait Islander students who are made to feel welcome and supported. Marcia's overall focus is on supporting learning and teaching, and she is enjoying this role.

Marcia also loves being here in Churchill at the FedUni campus.

She has high expectations of the success of FedUni Gippsland, and is delighted at the interest so far shown with the enrolment of 183 students in the first year.

Inclusiveness.

Inclusiveness of all strata of the community's students is a highly prized goal of the university, with the aim to encourage and support tertiary education opportunities for all students of all ages.

Marcia is very positive about the changes made at the campus. Providing all students with support is a top aim.

As well it is showing the community that people changing careers, those with an interest in study including young mums at home with the baby or parents with family duties, have an opportunity to study, at university or with on line courses also available at FedUni.

Financial Support.

Financial support is available through

Federation
UNIVERSITY • AUSTRALIA



bursaries which give the student financial help with books and other costs of study.

There are also low interest loans from the government which do not have to be repaid until after the student has graduated and has an income of a certain level.

No-one in your family been to university?

FedUni invites you to go and talk to them so they can help you consider a course They will provide a mentor, financial support, and advice. There are opportunities waiting to be seized.

Managing on a low income

Over the next month or so, we will be publishing articles supplied to us by Anglicare.

This is the second and follows on from February's issue information.

Find a bank account or loan that suits you. Shop around for bank accounts, credit cards and personal loans.

The cost of financial products can really vary. Here are some tips on how to shop around for bank accounts, credit cards and personal loans.

Some financial institutions offer basic bank accounts with:

- * No account keeping fees
- * Free monthly statements
- * No minimum deposit amounts
- * No overdrawn fees

You can find which financial institutions offer these basic bank accounts on the Australian Bankers' Association's Affordable Banking website.

Consider a no or low interest loan

The No Interest Loans Scheme (NILS®) is designed for people on welfare benefits who need safe, fair and affordable access to credit.

The scheme offers loans of up to \$1200 to

people on low incomes. There are no interest charges or fees. For more information see how no interest loans work.

Find out if you're eligible for a savings program

Some charitable organisations help low income earners with their saving goals.

See programs for low income earners.

Smooth out your bills

Do you find that some months are more expensive than others due to big bills, birthdays or unexpected events?

Here's how you can smooth out the ups and downs of your expenses.

Mark your calendar

Gather together as many of your bills and bank or credit card statements as you can. (This is also the first step in creating a budget.) Highlight the big bills that come less often, like electricity, home contents insurance or school expenses.

Then work out what day or month each bill is usually due. Mark each bill on your calendar or yearly planner, together with birthdays and periodic events.

Set aside some money

Add up how much your big bills cost in total for the year. If you wish, add an extra amount for gifts and celebrations. Work out how much this is per pay or benefit period (for example, per fortnight).

Put this amount aside each time you are paid (you may like to set up a separate high interest, low fee account for these savings). Then you will have the money ready to cover the next big bill or special event.

Ask about bill smoothing

Contact your utilities provider (gas, electricity, water) and ask about 'bill smoothing'. See if you can arrange to make fortnightly or monthly payments to them, instead of having to pay the whole bill in one go.

Centrepay

If you receive a Centrelink payment from the Department of Human Services, ask about Centrepay. This is a direct bill-paying service offered free to Department of Human Services customers. A small sum is taken out of your payment each fortnight to cover your bills. It's a way of

managing your bills that can help make things less stressful.

Home Energy Saver Scheme

If you are on a low income, you can get help by calling the Home Energy Saver Scheme (HESS) Helpline on 1800 007 001.

To compare energy offers visit the Australian Government's Energy Made Easy website.

Get help if you need it

Learning to manage your money can seem difficult when you don't have a lot to start with, but help is always available. Financial counsellors provide free assistance for people in financial difficulty. They can show you how to budget, manage your debts and help you deal with other money problems.

The Department of Human Services has a free Financial Information Service (FIS) that can provide general help with your finances such as budgeting or preparing for retirement.

You don't need to be a customer of the Department of Human Services to access the service. Call 13 23 00 to talk to a FIS officer

This information is from Money Smart Website

2015: Churchill's 50th Anniversary

By Margaret Guthrie

In 2015 Churchill will be fifty years old! This is a significant milestone in our town's history. CDCA hopes that it will be celebrated by a range of special events and community activities throughout the year.

It is not for CDCA to decide what should 'happen' to mark Churchill's 50th anniversary. We believe that community groups and local stakeholder organisations should decide for themselves how they are going to commemorate and celebrate this occasion.

CDCA has approached various significant stakeholders, such as Latrobe City Council, Federation and Monash Universities and Hazelwood Power, to request their support for Churchill's 50th celebrations. We hope, as a result, to see some significant and lasting infrastructure constructed in 2015 as a permanent commemoration of our town's 50th Birthday.

Similarly, CDCA is inviting local groups, sporting clubs, schools and other organisations to participate by planning and hosting 50th anniversary events during 2015. These might be special 'one-off' activities, such as reunions or projects, or might be a 'bigger and better' version of a regular annual

activity celebrated as a 50th birthday event.

To assist locals to share their thoughts and ideas, CDCA is hosting a Community Forum this month (as part of our usual quarterly General Meeting format) on the topic of "Planning for Churchill's 50th Anniversary".

Guest speaker is Ruth Place, from Churchill & District News, who will talk about the plans our community newspaper team is making to celebrate Churchill's 50th. We hope this will inspire other local organisations to commence planning for their own celebrations in Churchill.

This is not a forum for people to say "someone else should do this"; rather, it is a forum to share ideas and inspire members of local organisations to host their own celebratory events. CDCA hopes to see local residents involved in the planning of events conducted by the groups they participate in, so that 2015 is marked by numerous birthday activities in Churchill throughout the year.

We are inviting representatives of all local organisations to attend this March 18 Forum and participate in discussions on planning for 2015. It is important that we do some community



planning so that we have activities across the year (rather than all at once) and avoid 'double-booking' of dates, venues and events.

Our General Meeting and Community Forum will commence at 5.30pm on Tuesday March 18, in the Board Room of the building formerly known as 'Green Inc' (now called The Gippsland enterprise Centre, Building 9N, Federation University) in McDonald Way, Churchill. All are welcome.

A brief CDCA committee meeting will follow at approximately 6.30pm, at which observers are welcome, to deal with urgent CDCA business, correspondence and the like.

CDCA can be contacted at any time by writing to us at PO Box 191, Churchill, emailing mgcdca@hotmail.com or phoning 5122 2997. All local residents are welcome to contact CDCA to raise matters of local concern.

2014 Gippsland Fires Appeal launched

The Gippsland Emergency Relief Fund has launched an appeal to support people affected by the fires that are continuing to affect communities across parts of Gippsland.

The last few weeks of hot, dry weather have resulted in a situation familiar to Gippslanders.

Fortunately, there has been no loss of life but many people have been affected with loss of property, farms, homes, livestock, shedding and fencing. People have been affected in Baw Baw, Latrobe and Wellington communities, while East Gippslanders are still in the midst of a bushfire that has not yet been controlled.

President, John Mitchell, urged individuals and organisations to donate generously to the Gippsland Emergency Relief Fund.

"GERF focuses on helping to meet people's immediate needs for food, clothing, utensils, furniture, bedding and fencing, rather than capital items which may be covered by insurance or government aid. We have already provided funds to people affected by the Westbury fire, and have made payments to severely affected people in East Gippsland and Wellington Shires. We are anticipating many more requests for assistance over the next few days and weeks." Mr Mitchell said in launching the 2014 Gippsland Fires Appeal.

The Fund provides relief and assistance to people living in the Gippsland municipalities of Bass Coast, South Gippsland, Latrobe, Baw Baw, Wellington and East Gippsland who suffer injury, loss or damage from natural disasters.

"We are driven to provide rapid support to our fellow Gippslanders in their times of need," Mr

Mitchell said, "I call on all Gippslanders and the wider community to help, either by making a direct cash donation or running a fundraising event."

The Fund is a registered charitable organisation (registered number A0020241A) making all donations tax deductible. All donations are returned to the community and no costs are deducted for administration. Donations to the Gippsland Emergency Relief Fund can be made in three ways:

- At any branch of the National Australia Bank, BSB: 083 932, Account Number: 04829 9080
- Via post to Gippsland Emergency Relief Fund, PO Box 508, TRARALGON, VIC, AUSTRALIA, 3844
- Via PayPal by following the link on the GERF website at www.relieffund.org.au

For further information about the Gippsland Emergency Relief Fund or to discuss running a fundraising event in support of the fire appeal, contact

Postal Address: PO Box 508, TRARALGON 3844 Website: www.relieffund.org.au

Deputy President: 0488 018 425

Secretary: 0488 018 426 Duty Officer: 0488 018 417

Requests for assistance from GERF are managed via Municipal Emergency Recovery Officers. Impacted property owners should contact their local government authority. Affected Council contact numbers are listed below.

East Gippsland Shire Council: (03) 5153 9500

Wellington Shire Council: 1300 137 218 (Recovery Office line) Latrobe City Council: 1300 367 700 Baw Shire Council: 03 5624 2411

Media Contact: Robyn Dossett 0488018426

\$28,600 for tourism shelter in Morwell

The Victorian Government is investing \$28,600 from its \$1 billion Regional Growth Fund to build a community and tourist shelter in the Morwell Centenary Rose Garden.

Member for Morwell, Russell Northe, said the shelter would have seating, display tourism information and house a storage area for volunteers.

"The Morwell Centenary Rose Garden is a popular tourist attraction and in 2009 was awarded the recognition of 'Garden of Excellence' at the World Federation of Rose Societies annual conference in Vancouver Canada," Mr Northe said.

"The garden is a popular open space, attracting local users and day trippers, and it's also home to the annual Rose Pruning Event, with hundreds of visitors of all ages and abilities over three days in June.

However, there are currently no facilities within the garden to provide information to tour groups and visitors.

Volunteers currently use a shipping container to store equipment and two picnic tables to meet and have morning tea on the north side of the Rose Garden.

This building will provide a new space and reinvigorate the area and accommodate universal design principles, particularly given most of the volunteers are aged between 60 and 80."

Mr Northe said the project would beautify the area, adding to the attraction of the Rose Garden which is already a significant drawcard.

"The project will provide an accessible source of tourism information for the Morwell area and in doing so it will help attract and retain visitors to Morwell and Latrobe City," Mr Northe said.

"The shelter will further promote activities and events in and around the Rose Garden, including weddings and naming and memorial ceremonies.

The Rose Garden is also very popular with Proboscis Clubs and special needs groups like the blind, as it incorporates a sensory garden area."

Latrobe City Council's Mayor, Councillor Sharon Gibson, said that the shelter would be a most welcome addition to the garden.

"Having a purpose built facility such as this will dramatically improve the amenity of the rose garden in this area, providing an opportunity for a tourism display, seating and a storage area. The Morwell Centenary Rose Garden is an important tourism attraction for Morwell, hosting many visitors throughout the year. The shelter will also allow the volunteers to go about their business efficiently and effectively all year round," Cr Gibson said.

Mr Northe said the Victorian Government was proud to invest in the \$42,400 project with funding from its Regional Growth Fund provided to Latrobe City Council, which would contribute \$5000 along with \$5000 from Advance Morwell, \$3800 from the Morwell Centenary Rose Garden Advisory Committee and \$500 from Morwell Lions Club.

"The Regional Growth Fund is investing in community-led projects to strategically drive jobs, investment and innovation in rural and regional Victoria," Mr Northe said.

Since it was established in early 2011, the Regional Growth Fund has provided more than \$350 million to support over 1200 projects across regional and rural Victoria, leveraging almost \$1.5 billion in total investment.

In Latrobe City the Regional Growth Fund has provided \$15.73 million to 48 projects, leveraging about \$47.79 million in total investment.

The project was expected to be completed in February 2014.

For more information about the Regional Growth Fund visit www.rdv.vic.gov.au/regional-growth-fund.

Fire Services Levy reforms

Member for Morwell, Russell Northe, has welcomed the recently announced reforms to the Fire Services Levy. "The reforms, which come into effect from July 1, 2014, will benefit over 60,000 residential rental properties and over 860 outdoor sports grounds across Victoria", Mr Northe said.

"Residential rental properties will be reclassified from commercial to residential land use under the Levy, providing an average saving of almost \$260 per property each year.

Outdoor sporting groups that have some degree of commercial application, like non-member playing fees, restaurants or conference or reception facilities, will be reclassified from commercial to the public benefit land use category," Mr Northe said.

"This has enormous benefit for regional Victoria where sporting groups can be the hub of the town", he said.

"Many smaller rural towns rely

on their sporting bodies for, not only physical activity and exercise, but for the social interaction as well.

They are a place where the whole family can go to mingle and socialise with their neighbours and friends.

In some instances, it is the only regular social activity in the town.

The changes are also of benefit to water catchments that are part of water authority infrastructure, as they will be reallocated from industrial to the public benefit land use classification; and commercial and industrial vacant land, with buildings that add no value, will be reclassified to the vacant land use category.

I am very pleased that these reforms have been announced", he concluded.

Anyone wanting any more information on these reforms, should contact the State Revenue Office on 132 161 or visit the website at www.sro.vic.gov.au

New Churchill Motors

Lot 8 Phillip Parade,
Churchill, Vic. 3840.
Tel. (03) 51221380



Specializing in General repairs and Servicing of 4WD and Passenger Vehicles Including:-

Brake and Clutch Machining & Replacement

* Cylinder head and Flywheel machining

* Steering and Suspension repairs

* Tyre fitting and balancing

* Log book servicing and general repairs

* Specialist Diagnostic equipment for current models

Present Your Student Card For a 10% Discount on Parts & Labour.



All repairs covered by Repco Authorized Service Nationwide Warranty.



THE BARBER SHED

Mens \$18, Beard Trim \$5, Flat Top \$22,
High School Boys \$17, Primary School Boys \$15
Ladies \$22 (Restyle extra \$5), Fringe Trim \$5,
High School Girls \$17, Primary School Girls \$15
TUESDAYS - AGE PENSION PRICES - Men \$15, Women \$17

NO APPOINTMENT NEEDED! JUST WALK IN...

Shop 8A West Place Shopping Centre,
Churchill

Telephone: 5122 1300

(opposite Woolworths)



STRUT RE-GAS GIPPSLAND

"The Strut Specialist"

Struts are not throw away items ...

They can be

RE-GASSED

- Sales of Steel and Stainless Struts
- Repairs to all types of Struts
- Design applications and pressure modification
- Handles and Fittings available



Tel: 5166 1665
Mob: 0407 542 122

50th Anniversary

Dr WHO

Collectables, figurines,
trading cards, books,
comics and DVD's

Nook and Cranny

97 Buckley Street
Morwell

AS Advertising Securer

you are invited to apply for a position with the paper as an Advertising Securer.

Phone Ruth on 5122 1961 to apply and/or obtain further information.



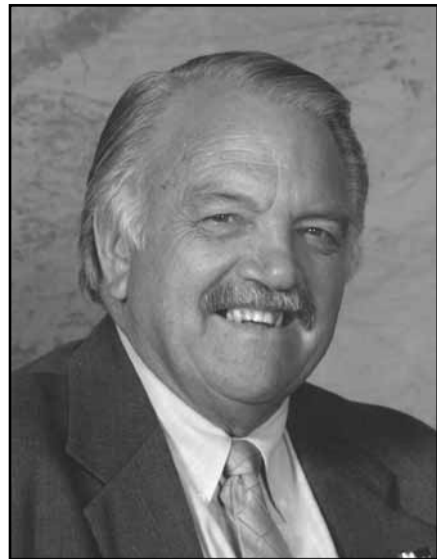
Fiddlehead Festival

SATURDAY MARCH 15 2014 10AM-9PM
YINNAR RECREATION RESERVE
 IN THE LATROBE VALLEY, GIPPSLAND
 JUMBUK ROAD YINNAR (MEL REF 628 C8)
 "It ain't just about fiddles."

'BREAKFAST WITH THE ARTISTS' FROM 7:30AM MAIN ST YINNAR BEFORE THE FIDDLEHEAD FESTIVAL ENJOY FINE FOOD, ART AND MUSIC AT ARC GALLERY
10:00AM GATES OPEN | ENTRY \$10 ADULTS | CHILDREN U/16 FREE
LIVE MUSIC OVER 20 GREAT ACOUSTIC ARTISTS ACROSS TWO STAGES! INCLUDING THOSE BELOW, PLUS MORE TO BE ANNOUNCED!
THE STILLSONS | REDWOOD | TIM WOODS | APPALACHIAN HEAVEN STRZELECKI STRINGBUSTERS | COALVILLE ROAD | SALUBRIOUS BORDERLINE | ACOUSTIC KITCHEN | MOLLY MAGUIRES | NIGELLAS
MARKET OVER 60 STALLS! (OPENS 10AM - CLOSURES BETWEEN 6PM & 9PM) CRAFT | FOOD | INSTRUMENTS | JEWELLERY | TOYS | GIFTS & MORE!
CHILDREN'S AREA CHILDREN'S MUSIC MAKING | ODDSOCK CIRCUS | KOKO THE CLOWN | FACE PAINTING | PLAYGROUND | FAIRY FLOSS | ICE CREAM & MORE!
MUSIC MAKING WORKSHOPS FREE WORKSHOPS FOR ALL AGES. INCLUDING ABSOLUTE BEGINNERS! VOCAL | UKULELE | BANJO | GUITAR & MORE!
MUSICAL PARTICIPATION BRING AN INSTRUMENT AND JOIN IN THE FUN!
 GROUP JAMMING & BUSKING WELCOME ALL DAY - ALL KINDS OF ACOUSTIC MUSIC!
 PLAY ON THE YINNAR 'WHACK-IT' MUSIC SCULPTURE FOR ALL AGES AND ABILITIES!
FESTIVAL FINISHES AROUND 9PM NO DOGS
MORE INFORMATION & UPDATES AT:
WWW.FACEBOOK.COM/FIDDLEHEADFESTIVAL
 EMAIL: fiddleheadfestival@yinnar.vic.au
 PH. 03 51631261



Darrell White



Churchill Town Centre Update - Northern Car Park

Concrete works on the pedestrian concourse between the Hazelwood Village and West Place shopping centres are now complete. This has included laying of plastic cells under the pathways to provide root protection for street trees when planted.

The erection of public lights and seating, completion of garden beds, and planting of street trees and the garden beds will follow as the next stage.

Agreements have now been reached between Latrobe City Council and the Owners Corporation, the owners of most of the northern car park, to transfer parcels of land in the car park. This will ensure that future streets and plazas are owned and maintained by Latrobe City Council, while the car parks, including the aisles, remain privately owned and maintained. Agreement to transfer the land will now enable the reconstruction of the car park to take place in stages.

The works in the northern car park will be coordinated by Latrobe City Council and the owners of the car park - 36th Penny and the Owners Corporation. While the aim will be to minimise the impacts on the community using the car parks while works are undertaken, it is anticipated that there will be some disruption as sections of the car park are fenced off and reconstructed.

Part of the next phase of works includes construction of a Taxi Rank and a Bus Shelter along the realigned Georgina Place. The aim is to complete these works by the end of May next year.

Latrobe City Council to lobby for the establishment of forestry, wood and paper research facilities in Latrobe City

Latrobe City Council is working to establish

forestry, wood and paper research facilities within Latrobe City to encourage the development of innovative technology for the industry.

The nearby natural forestry resources, particularly plantation timber, which enables a highly productive timber and forestry industry makes it a natural progression for Latrobe City to become a hub for research facilities.

The existing forestry, wood and paper industry sector which provides softwood, value-added

hardwood and paper products, is the fourth largest contributor to the Latrobe City economy, generating an estimated \$860 million into the local economy each year.

The economic significance of the hardwood and paper products industry is demonstrated by the ongoing presence of major timber producer, Hancock Victoria Plantations (HVP) and manufacturers such as Australian Paper and Carter Holt Harvey within our City.

Council is keen to build on this capability through encouraging the establishment of a place of innovation for the sector.

Council has recently resolved to write to the Australian Government Minister for Agriculture, The Honourable Barnaby Joyce outlining the region's strong capability in timber growing and processing and requesting that the Australian Government work with Latrobe City Council to support the establishment of the facility.

In addition to writing to the Minister, Council will be pursuing representation at an upcoming meeting in Canberra.

Concrete never looked so good!



Concrete

Holcim supply all size loads from Commercial to Residential and Domestic. We also have an extensive range of colour and exposed concrete.



Technical

Holcim have a NATA accredited technical laboratory based in Morwell.

Aggregates

Holcim supply an extensive range of quarry products from aggregate through to crushed rock and packing sand.



Concrete

- Morwell Mick 03 5133 4800
- Leongatha Peter 03 5662 3415

Aggregates

- Jeeralang Quarry Julie 03 5166 1444
- Tyers Sand Julie 03 5166 1444

Prostate Cancer Support Group Local Area

LATROBE VALLEY PROSTATE SUPPORT GROUP -- "LVPSG"

Meetings 4th WEDNESDAY each Month and held At MORWELL CLUB 136 Helen St. Morwell Meeting 7 PM onwards; but {opt} meal 6 pm first All Welcome Esp Partners of Cancer sufferers

A informal and open group of post and present Prostate Cancer patients. & whatever your stage of cancer do please consider contacting us or coming to a meeting

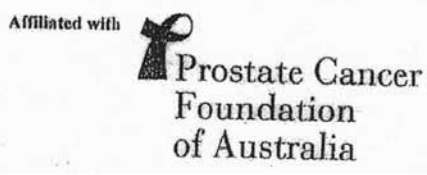
Support; Information and chance to ask, discuss etc

Contact COLIN BERMINGHAM - (03) 5135 3353. (03) 5116 5672, Mobile, 0419 116 825.

Convenor/Secretary PO Box 269 Morwell 3840 Also Email vietnamveteran@wideband.net.au

For more information call 1800 220 099

go to www.pcfa.org.au



Crocka Foundation Fun Run



On Sunday March 30, 2014, the second annual Crocka Foundation 'Beating Hearts Fun Run Walk' will be held at Lake Hyland, Mackey's Road, Churchill.

Last year the event saw over 150 participants run and walk the 5km or 10km circuit around Churchill, raising over \$12,000 for the Murdoch Children's Research Institute into sudden cardiac death.

Following the run families enjoyed a BBQ lunch cooked

by the Churchill Lions Club, jumping castles, showbags, cake stall and much more.

This year we encourage the local community to join in our event to raise much needed funds and to beat our total from last year.

We will again this year be having a BBQ lunch, jumping castle, cake stall, raffles and much more.

Even if you do not want to do the run/walk, come down and support our cause!

New \$200 travel allowance for apprentices

Apprentices who have to travel more than 100 kilometres to access training are now entitled to \$200 from the Victorian Government to assist with meals, accommodation and transport.

Deputy Premier and Member for Gippsland South, Peter Ryan, said many apprentices found it costly to attend trade school and this funding would ease the financial burden on those travelling from

Gippsland to access training. "To access funding through the Apprenticeship Travel Allowance Scheme pilot, apprentices must travel more than 100 kilometres from their home to their training organisation for three or more consecutive days of training," Mr Ryan said.

"Local apprentices are vital to the ongoing delivery of essential services across Victoria which is why in 2012 the Government

increased the subsidy for every apprenticeship course by an average of 20 per cent." Mr Ryan said the pilot program would help thousands of regional apprentices and was another example of how the Government was making vocational training more accessible for those living in regional areas.

"This funding will greatly assist young people and adult learners to gain skills where the

jobs are and where the jobs are needed," he said.

Mr Ryan said the Government had recently doubled the bonus subsidy for regional training, meaning vocational training providers, including TAFEs, had received an additional \$20 million for delivering training in regional Victoria. "These changes are supporting more regional vocational students than ever, with close to an extra 60 per

cent more subsidised enrolments across country Victoria since coming to government," Mr Ryan said. "These record figures are supported by the Government's record investment of \$1.2 billion in the training system as we work towards building a skilled workforce for the future of Victoria."

Visit www.education.vic.gov.au/training for more information on the program.

Term 1		Monday 3rd February - Friday 4th April		Term 1	
Monday	Tuesday	Wednesday	Thursday	Friday	
ACDSee Photo Editor 10.00 am - 12 noon Learn cropping, red eye reduction, & adjustment. Restore old photo's	Creative Writing 10.00 am - 12 noon Don't wait for your happy ending—write it. Put pen to paper, & share your stories.	Returning to Work / study One on One help available Adult Literacy & Numeracy 10.00 am to 3.00 pm Updating work requirements Study using computers Or Traditional class room tuition Night classes available if required Having trouble spelling, reading, writing or maths, let us help you get up to speed and achieve your goals. ***** Computers 1.00 pm - 3.00 pm New computer at home, what do I do now? How do I download / delete programs, set up my email account, connect internet? Join this class, we will teach you how to boss of your computer what do they do?, how do I use them? Well come along & introduce yourself to these modern day communication devices	Patchwork Morning 10.00 am - 12 Noon & Afternoon 1.00 pm - 3.00 pm Learn quilting, material choice, technique & design or if you need help / advice, call in & we will set you on the right quilting path to success, to astound family & friends with the wonderful quilts that you create. ***** Event of the Year 5th Biennial Quilt, Craft & Photographic Exhibition Saturday 13th & Sunday 14th September 2014 10.00 am - 4.00 pm Held at Federation University Auditorium—Churchill campus Raffles, Prizes, Giveaways Not to be Missed	Basic Computers 10.00 am - 12 noon Learn about computer hardware, using the mouse, the desktop, icons, files & folders, My Documents, using Windows explorer Discussion Group 10.00 am - 12 noon Do something different, watch a movie, or go out for lunch. Talk about it, share life's adventure. Make new friends. Book Club Churchill Bookworms Last Friday of the Month Come wriggle / read & share with us 1st Friday Month Writing Group Want to write, but don't know where to start? Join us & we will learn & share together. 10.00 am - 12 noon Singing Group 10.00 am - 12 noon 1960 - 70's Genre songs Come sing along, and have fun Quilting Machine Training by appointment only Learn to use 'Annie' our Quilting machine	
Craft Circle 10.00 am - 12 noon Stitch / chat / sew / knit Finish UFO's, learn how to sew, knit, stitch, repair clothes, socialise, create something special & have fun.	Silver Surfers 10.00 am - 12 noon Social Media Internet, Email, SMS, Face book, Skype, Genealogy Help with I pads, notebooks, E readers Learn how to use these electronic devices, ***** Computers 4 Employment MS Word / Excel / Publisher Quick books, PowerPoint 12.30 pm - 2.30 pm Editing, formatting, templates, layout, tables, columns, toolbars, shortcut keys, & more	***** Computers 1.00 pm - 3.00 pm New computer at home, what do I do now? How do I download / delete programs, set up my email account, connect internet? Join this class, we will teach you how to boss of your computer what do they do?, how do I use them? Well come along & introduce yourself to these modern day communication devices	***** Event of the Year 5th Biennial Quilt, Craft & Photographic Exhibition Saturday 13th & Sunday 14th September 2014 10.00 am - 4.00 pm Held at Federation University Auditorium—Churchill campus Raffles, Prizes, Giveaways Not to be Missed	***** Event of the Year 5th Biennial Quilt, Craft & Photographic Exhibition Saturday 13th & Sunday 14th September 2014 10.00 am - 4.00 pm Held at Federation University Auditorium—Churchill campus Raffles, Prizes, Giveaways Not to be Missed	
Computers unplugged 1.00 pm - 3.00 pm Open up a whole new world of information, & communication skills. Discover how to make greeting & birthday cards, etc.. Posters, flyers, calendars ***** Community Workshop Incorporating Men's Shed program 9.30 am - 2.30 pm All welcome ***** Folk Art / Painting Come and learn the intricate and delicate aspects of FOLK ART painting. Choosing the correct brushes, paints and techniques to achieve high class works. Night Class 6.30 pm - 8.30 pm	Child Immunisation 2014 1.00 pm - 2.00 pm 2nd Tuesday each month 14/1, 11/2, 11/3, 8/4, 13/5, 10/6, 8/7 Tai Chi with Julie 6.00 pm - 7.00 pm Enquiries Phone 5122 2588	Patchwork learn the art of quilting, design & material selection. Night Class 6.30 pm - 9.00 pm	***** Event of the Year 5th Biennial Quilt, Craft & Photographic Exhibition Saturday 13th & Sunday 14th September 2014 10.00 am - 4.00 pm Held at Federation University Auditorium—Churchill campus Raffles, Prizes, Giveaways Not to be Missed	***** Event of the Year 5th Biennial Quilt, Craft & Photographic Exhibition Saturday 13th & Sunday 14th September 2014 10.00 am - 4.00 pm Held at Federation University Auditorium—Churchill campus Raffles, Prizes, Giveaways Not to be Missed	



Hazelwood Rotary

MEETINGS:
Mondays 6.30pm - 8.00pm

ITALIAN AUSTRALIAN SPORTING
AND SOCIAL CLUB MORWELL

*May is Rotary Bowelscan Month
- The National Bowel Cancer
awareness program*

Contact:
President Leo Billington

Phone:
0458 661 848

S&J CYCLES

RIDE LIFE RIDE GIANT

GIANT

**2014 bicycle range
in store NOW!**

35 Tarwin Street,
Morwell

Phone
5134 3891

Fax 5134 5503

Email: sjcycles@netspace.net.au



Churchill Self Storage

THREE SIZES:

3m x 3m
3m x 4.5m
3m x 6m

66 Switchback Road

*Situated at corner of
Switchback Rd &
McCormick St, Churchill*

Secure access via Electric Gate and Your Padlock

Phone **03 5134 2790**

Contact:

B. J Bennett & Co. REAL ESTATE PTY LTD
219 COMMERCIAL RD, MORWELL

Professionals

Gippsland Australian Muslim Community Inc Commemoration

On Saturday January 25, 2014, the Gippsland Australia Muslim Community Inc. (GAMCI) together with the Monash University Islamic Society (MUIS) joined together to commemorate the birth of the last prophet, Muhammad (May peace be upon him). Held at Federation University's Gippsland Campus (MUGSU Lounge), the program was attended by a number of distinguished guests including Councillor Sandy Kam and Councillor Peter Gibbons representing the Latrobe City Council; Dr Graham Dettrick and Dr Christine Lee from the Gippsland Ethnic Communities Council, and Mr Murray Lobleby from Gippsland Interfaith.

Master of Ceremonies for the function was GAMCI Secretary, Dr Abdel K Halabi, who welcomed and thanked all for attending. The commemoration program began with a recitation from the Quraan from Ibraam Zafar, a year 7 student from Trafalgar High School, and a nasheed (Islamic song) from Eemaan Zafar from Yarragon Primary School. An overview of the life of the Prophet of Peace (Muhammad P.B.U.H) was provided by local Imam Dr Zafar, and this was followed by a presentation on the culture and customs of Islam, presented by current Monash University student, Yumna Ahmed. A highlight of the program was a performance by Muslim children taught by the United Muslim Sisters of Latrobe Valley (UMSLV). Here eight Muslim children aged between 5 and 11 attending various schools from Boolarra, Churchill, Morwell, Traralgon, Yarragon and Trafalgar, performed and acted to a popular song "Sing, Children of the World". An Arabic poem was then performed by visiting Egyptian scholar Dr Walid. Councillor Peter Gibbons presented the keynote address, which

focused on how the Latrobe Valley was a leader in multicultural awareness and activities. This was followed by the presentation of GAMCI Appreciation Certificates to the distinguished guests, performers and those who assisted in the program. The final thank you was made by Mr Tanveer Hassan, the President of GAMCI. Tanveer outlined the current and future plans of the Muslim community in Gippsland. The function concluded with refreshments and "High Tea" which was catered for superbly by Mrs Tehmina Tanveer and family.

The function was attended by over eighty people and showcased the wonderful diversity and wide variety of Muslim life in the wider Gippsland Community. Displays were made highlighting beautiful goods and wares from Pakistan, Afghanistan, Bangladesh and the Middle East. The UMSLV displayed their initiatives within Gippsland in advancing and educating Muslim children. Finally, a stall provided ladies with beautiful Henna decorations.

GAMCI was officially formed in June 2013 and (like UMSLV) is an incorporated and registered body approved by the Victorian Consumer Affairs to represent and enhance the interests of the Muslim community. GAMCI plans to be an integral part of the Muslim community by providing a permanent place of worship, and to organise and conduct Islamic prayers, festivals, sport events and social functions. Further details about GAMCI can be obtained by emailing Gamci.2013@gmail.com



Rimsha Obeid and Ayesha Jawwad in traditional dress accepting their GAMCI appreciation certificates from President Tanveer Hasan



The Muslim children from left: Tahsin Yousuf; Eemaan Zafar; Maheran Chowdhury, Karima Halabi, Maiserah Chowdhury, Zahra Halabi, Nabihah Ahmed and Maryam Hasan being presented with their performance certificates from GAMCI president Tanveer Hasan

Latrobe Valley mental health support services boosted

MIND Australia will work to address severe and persistent mental health issues in the Latrobe Valley with the support of the Federal Government.

The Member for Gippsland, Darren Chester, in conjunction with Gippsland Medicare Local, today announced funding of \$100,000 towards the delivery of MIND's services.

Mr Chester said the announcement was the third allocation of funding through stage one of the Federal Government's 'Partners in Recovery' program in Gippsland.

"Gippsland Medicare Local was awarded a total of \$7 million over four years to boost mental health support services, and we have seen this funding targeted to specific areas across the region," Mr Chester said.

"Today's announcement is an important boost in services for people in the Latrobe Valley who suffer from mental health issues.

It's estimated that more than 600 people in Gippsland will deal with severe and persistent mental

health issues at some stage over the next three years.

While we have become more aware of the complexity of mental health issues and the need to help people who are suffering, we still have a lot of work ahead of us in terms of providing appropriate levels of support."

MIND offers clients residential rehabilitation; an outreach service; transition to independent living; stable and safe accommodation; respite for carers; mentor programs; individual service packages; and specific services for families and carers of people with a mental illness.

Gippsland Medicare Local Chair, Dr Nola Maxfield, said MIND had the capacity to deliver mental health recovery and rehabilitation services and educative programs to adults with severe mental illness.

"MIND is a quality organisation which can deliver the 'Partners in Recovery' initiative throughout the Latrobe Valley," Dr Maxfield said.

"There are outlets located in Morwell and Traralgon, and MIND has already been serving the Latrobe Valley region in community mental health services for the past 25 years.

This funding will support people with complex needs as well as provide assistance for carers and families as well."



**ANZ
NetSetGo
at
Churchill**

Come and Try 3 sessions FREE!

Interested in learning netball? The Churchill Indoor Netball Association is offering the ANZ NetSetGo program this year, with the first three sessions free!

The program this year will be aimed at 5-8 year olds, and will promote motor skills, confidence and an introduction to the game of netball through play, music and modified games.

Registered participants will all receive a fun NetSetGo pack after registration.

When: Saturday mornings 9am - 10am
March 22, 2014 until 14 June,
2014 (no sessions on school holidays)

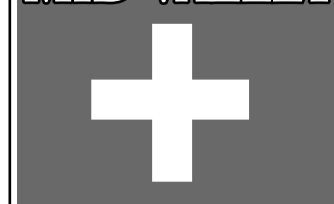
Where: Latrobe Leisure Churchill

Contact: Stacey Whitelaw
0427 631 402
staceywhitelaw81@bigpond.com

Registration: April 26, 2014
(registration cost \$45)



MID VALLEY FAMILY MEDICINE



• Open 7 Days
• Extended Evening Hours
• Bulk Billing
to all Medicare Card Holders
• Same Day Appointments
available.

M&CG
Medical & Aged Care Group

Shop 59 Mid Valley Shopping Centre Morwell

Boolarra Primary School

Boolarra Folk Festival!

As is tradition, our students kicked off the music program at 11:00 am on Saturday March 1, with our drumming routine. This year we also ran a craft stall at the Folk Festival featuring wonderful goodies made by all our students during their Art classes. The P/1/2s made colourful key (or bag) tags that were light weight. They also created naturally scented (citrus or lavender) salt body scrub for exfoliating and moisturising at the same time! The grade 3/4s made very attractive, button decorated, pots that were packed with the required bits and pieces to enable the purchaser to create a gorgeous pot plant. The 5/6s created some really funky, 70s inspired, hand-painted ceramic coasters. In addition

one of our grade 4 students, Brooke and her Mum Tanya, made earrings and heat packs, whilst grade 4 student Lexi's Nan knitted some delightful woollen toys. All purchases from our stall were placed in beautifully decorated environmentally friendly and "work of art" bags produced by our students. In addition we sold fresh fruit salad prepared by a team of our industrious parents. Not only was a great day had by all but we also raised money to help us create some mosaics to beautify our students' toilets. We are very grateful to the members of the Boolarra Folk Festival Committee who worked so hard to provide this fabulous event that showcases our magnificent town.

Swimming Sports

A team of seven students represented

our school at the recent Yinnar and District level. They enjoyed the experience and did very well with Jacob, Emre, Jedd and Rivan qualifying to go on and compete at the Latrobe Valley District Swimming Sports, which was a sensational effort.

Ride 2 School

As our school captains did such a good job recording our ride to school data each month last year, our school was rewarded with a special Healthy Breakfast and special activities provided by the Ride 2 School team.

Our Junior School Council is currently actively promoting Ride 2 School Day set for Wednesday March 19.

We Are A Very Active School

Our students are enjoying their tennis lessons with Mr Andrew Peavey on Mondays. On Tuesday they are actively involved in developing their skills with Mr John Duck in

the lead up to both our own Athletic Sports and the Yinnar and District Sports set for Thursday March 27. On Thursdays Ms Jo Dryden takes our students for BluEarth games and activities to build co-operative skills, fitness and highlight the enjoyment of being physically active.

Mandarin Classes

Our prep to grade 4 students are enjoying finding out about Chinese culture and learning some basic Mandarin with York. We are grateful to Kurnai College for allowing us to have York with us on Fridays.

We hope to expand our Mandarin program by utilizing the interactive satellite Polycorn system that will soon be set up in our Teaching and Learning Centre.

This will enable our students to participate in classes being delivered at Kurnai and in China!



Boolarra Primary School Preps for 2014



Junior School Council Folk and more

Lumen Christi Primary School

Happy New Year everyone

We hope all Churchill News readers had a terrific break over the summer school holidays!

2014 at Lumen Christi has started with much excitement. The highlight of the year has obviously been the arrival of our wonderful new prep students, who have settled in extremely well.

The prep/one room, led by Mrs. Noreen Webster, has been straight down to work with literacy and numeracy. On their first day our preps were matched with their Year 5/6 Buddy and we look forward to watching these relationships grow over the year.

When the students arrived back they were met with some great new transformations. Our senior block was fully operational to welcome our two year 3/4 and two year 5/6 classes,

and the newly refurbished Art room has been fitted out. Added to all this, is the outstanding way all classes have settled into their learning routines and are taking full advantage of the new technologies that have been added to the learning areas.

With the start of the new year comes the appointment of new student leaders. At the first Mass of the year these leaders were recognised and received their leadership badges.

At the end of last year the decision was made to reintroduce the house team system, which has allowed the appointment of more students to leadership roles – We also have allocated staff to teams so we eagerly await their fashions that will appear at Athletics Day later in the year!

Congratulations to our 2014 Student Leaders:

School Captains: Kiera Johnson and Tim Hutchinson

Vice-Captains: Renee Lehrner and Blake Whykes

Red Team: Kaitlyn Esler

Green Team: Vincent Schoutens

Gold Team: Meg Hutchinson

So far this year the staff have been working hard to complete a range of assessments to help shape the learning that will take place, and they deserve to be congratulated for the way they have gone about this so comprehensively. The term ahead, as always, looks busy with some exciting events and activities. This term the parish will be working with our year 3's to prepare for their First Reconciliation in March. We wish our students well in the

upcoming inter-school swimming and athletics events. After all the heat we have had I'm sure Murphy's Law will have it raining on our Athletics Day – Yinnar farmers expect rain on March 27! So far we have participated in two levels of interschool swimming and have had a group of students progress through to the third stage of competition.

Congratulations to all those who have shown such great sportsmanship and determination in competing in the Churchill and Traralgon Rounds – Good luck to those swimmers preparing for the trip to Sale.

So we wish Churchill News, our local community, fellow schools and everyone a very successful 2014. We look forward to sharing the stories of our year with you all each month.



Lumen Christi Preps with their buddies



Kurnai College Junior Campus

Exchange students

Churchill Campus welcomed six new students to our Learning Community last week. The six Year 10 students are here on a 10 week exchange from Bavaria in Germany. Each student has been paired with a student from the Churchill campus who will return the visit in November 2014. The exchange students have settled in well and are adapting to school in Australia. The students have commented that school seems to be more relaxed in Australia than in Germany, the school is not so strict and the teachers are very friendly. So far they have found the lessons quite interesting and they are enjoying having some classes at the Precinct Campus. Highlights of life in Australia so far have been the weather, the landscape, Milo the drink, family life, koalas, kookaburras and kangaroos.

Another highlight has been the school uniform. The students all agreed it makes getting organised in the morning much simpler when there is no question about what to wear for the day. The list of dislikes is very short – smoke, vegemite and white bread. The students have various reasons for coming on exchange to Australia, ranging from “to improve my English,” to “learning to be independent.” We wish them the best of luck and hope they continue to have a wonderful time and learn a great deal while in Australia.

By Almuth Otten

House Captains

The four houses (Red, Yellow, Green and Blue) have had the election of their captains.

Speaking with Tristan, Sophie, Zac and Clare, they explained that captains are responsible for encouraging all the students to go in the events for their house. They help by providing information about events so students are informed. Dressing up in house colours is also a task they have, so that house spirit is raised and the students will support their house in events.

The first sporting venture for the year was the swimming sports. Some German exchange students are at Kurnai and they were encouraged to participate, which they did happily.

The house captains are enthusiastic about their role and are looking forward to the next sporting event- athletics which will take place in term 3. They know that participation is much more fun and more important than watching, so they are hoping to encourage all students to be involved and join in.

Swimming Sports

The swimming sports were good fun according to some house captains and participants who attended the recent swimming sports. The sports were held at the

Moe Outdoor Swimming Pool which is a great venue. This year the weather was very good to them. There was a good atmosphere.

Participants came from each of the three Kurnai campuses- Morwell and Churchill Junior and the Gippsland Education Precinct.

Along with the traditional 50 metre events in freestyle, breaststroke, back stroke and butterfly, some novelty events added fun to the day for the participants and the spectators.

Sophie broke the school record in the 50 metre butterfly.

Bridget participated in all the events. Fabienne won the breast stroke and freestyle events and Regan came second or third in all the events.

Clare came first, and Regan came third in the diving. According to those present the diving attracted a lot of interest and support from the students.

Tristan enjoyed telling us about coming second in the wading pool run.

Fabienne, Bridget, Regan and Sophie have all qualified to go to the next Latrobe Valley level.

Bonding day

On February 21, the Churchill year 10's all went on an adventure to the Mirboo North pool, to get to know one another. Some kids even showed up in wet suits. They did look quite funny, but they were the ones laughing

when we were all freezing.

When we arrived, we noticed a huge inflatable toy called Nessy. Everyone jumped on and had a go; you could hear the laughter and delight everywhere. All the teachers and students were smiling and having the best day.

The weather took an unexpected turn, resulting in treacherous rain and wind but despite all that, it was a fantastic day and definitely a bonding experience. There is no better way to bond than sharing blankets, drinking hot chocolate, warm showers and having a sausage from the barbeque.

Some kids suffered through the weather and continued on swimming all day, while others got out early and enjoyed socialising with the other students. The kids swimming were having a great time doing backflips, somersault, chasing each other and having the biggest wipeouts (everyone enjoyed that). Even Mr. Harrison jumped in and had a wipeout. The kids were all very encouraging and helpful trying to get each other to the end of Nessy.

In the end, everyone who went had a wonderful day and really enjoyed themselves. Even though some students ended up sick, they would go back and do it all again. We would like to thank all the teachers who set the day up and who came with us to Mirboo North.

By Sam and Brittany



Russell Northe proudly supports
Churchill and District Schools.



Russell Northe MLA

Member for Morwell

russell.northe@parliament.vic.gov.au
www.russellnorthe.com.au

ph 03 5133 9088
fax 03 5133 9388



Authorised by Russell Northe, 66 George St, Morwell VIC 3840

Churchill North Primary School

2014 Priorities

One of the four year priorities that the Education Department has included in their Strategic Plan is to; *Improve the opportunities for all learners without exception.* At Churchill North Primary School, this means that our teaching and learning opportunities and activities will aim to meet the needs, interests and choices of all students.

We aim to improve opportunities for all learners; our students and their parents and carers, so everyone can achieve their potential, irrespective of backgrounds or circumstances. Our classrooms always aim to address the individual needs of each student, in particular the needs and challenges faced by those students who are disadvantaged or vulnerable. We do this in Literacy by formulating tasks to suit students' levels of need. For example when teaching students the phonic communicators, some students are still learning the first initial sounds of letters, where other students are up to learning about letter blends; we adapt the activity to wherever the student is at. In Maths, teachers use different entry points for addition questions; some students are working on the principle 'friends of 10', others are working on the same principle, though working with 20, 30, 40 and so on, while other groups work on the same principles of addition up to 100.

We aim to better develop our gifted and talented students by providing greater choices and opportunities for learning. As always, we will continuously adapt and improve our teaching practices to cater for students' needs.

New teacher at CNPS

This year, Churchill North Primary School has welcomed Mr Rodney Clarke to the team. Rod is the Grade 3/4 classroom teacher and he offers his expertise to support a variety of our current initiatives at Churchill North, including literacy, peer-coaching for staff, leadership and a fresh new outlook on current practices. Rod has been embraced by all his students and their families which is great to see in such a small community as ours. Welcome Mr Clarke!

Maths specialist updates...

Our maths specialists are currently getting maths out into the community by running a Special Activity day on March 13, focussing on picture books with maths content and then a follow up activity. On the day, students will dress up in costumes surrounding the maths theme.

Classroom teachers are being equipped with new resources in their classrooms, to allow for greater hands-on learning opportunities.

On March 20, we are running a Family Maths Night, that we highly encourage parents, carers and families to attend, to get an insight into some exciting maths games that can be played at home using dice, cards and single-digit numbers. A complementary goodie bag and barbeque will be provided on the night.

CNPS looks forward to sharing more maths news in the upcoming months.

Multiculturalism and identity

This term, students are learning about multiculturalism and its contribution to Australian identity. Students in grades 2/3, 3/4 and 4/5 were lucky enough to work with Mr Winston Doherty, who is of African descent, who came to CNPS to discuss African culture. Mr Doherty discussed the two dominant religions in Africa: Muslim and Christian, ways of doing things and different behaviours and roles of individuals in Africa. He told us that 50% of people living in Africa are under the age of 25 and two-thirds of the population are women. We learnt about the giant snails and their medicinal benefits, and about all the different tribes and languages throughout the African continent. Mr Doherty showed us some amazing artwork that shows how African people socialise, play and behave. We learnt a lot about the culture and how it can be very different to our own in some ways, but also how cities in Africa are very modern and western like here in Australia. Mr Doherty also kindly donated some beautiful artwork to CNPS. It was a very rich, thorough cultural awakening and we look forward to delving further into multiculturalism throughout the rest of the term.

Prep pirate party

Recently P/1B and P/1D had a Pirate Day. The children participated in a treasure hunt, a game of shipwreck and pass the parcel, and finished with a pirate party.

Teddy Bear's Picnic

On Friday February 7, grade Prep/1 children at Churchill North Primary School enjoyed a Teddy Bears Picnic to reinforce their learning about the letter 't.'

Children brought their favourite teddy bear to school and participated in teddy bear rhymes, a treasure hunt and a picnic.

Churchill North Primary School is also happy to announce that they have 37 preps enrolled this year, and look forward to sharing the learning journey with these bright young students.

The Language Support Program

The Language Support Program, which includes receptive and expressive language, phonological awareness and articulation, is run at Churchill North Primary School by experienced ES Staff with the guidance of Speech Pathologist, Joe Langfield.

Children are withdrawn for one, two or three sessions per week in groups or one-on-one. We have two staff members who coordinate the program, one looks after articulation and phonological awareness and the other staff member focusses on receptive and expressive language.

Each child has an Individual Learning Plan and



all staff involved with that child are kept informed of the area that is being worked on, so the child is helped in all classes they attend.

School Captains' Comments

Hi, we are Oscar and Alyssa, the new School Captains of Churchill North Primary School. So far it has been a pleasure having the responsibility of School Captain, and we have been happy to look around the school at all the happy faces. Our school is growing and we are proud to be part of it. In Grade 6 this year, we are learning about blogging. We have also learnt about cyber safety, which means understanding how to use the internet safely. We don't think students in primary school should have facebook, because they're too young. We are learning how you can use facebook safely, when you're old enough. Our personal goals are about being brave in school and in the community, even after school. Being brave means speaking up, being clear, getting what you want and protecting your honour.

By Oscar and Alyssa 5/6HS



Preschools

Due to the smoky conditions in Morwell, Glendonald Park preschool is hosting the 27 students from Elizabeth Wilmot Preschool.

Along with the Morwell preschool visitors, Glendonald Park had a visit from Berry and her dog Happy. The students learnt about living safely with a dog.

Berry and Happy taught the children what to do and what not to do to be safe around dogs.

Both Glendonald Park and Churchill Hub Preschool are also looking into recycling.

Churchill Hub Preschool is collecting all kinds of recyclables. The children will then be able to use these for arts and crafts.

The children at Glendonald Park are showing a lot of interest in the worm farm, which recycles food scraps for the worms. Some of the worms are used to feed the turtles – Lauren and Cookie.

Gippsland Education Precinct

Tassie bushfire recovery project

Ange Gordon lives at Traralgon South and teaches at the Gippsland Education Precinct. After the Black Saturday aftermath, Ange was the Chairperson of the Traralgon South Recovery Committee. During that time they established a great relationship with the Tasmanian community. Many Tasmanians came over to this area to help rebuild fences, since then they have had their own Dunalley fires, so Traralgon South has been sending crews over to them to reciprocate with their rebuilding.

Ange thought that some of the VCAL (Victorian Certificate of Learning) students might like to go and help too.

A community placement is part of the requirements for this certificate. A date was set. The students were asked what they thought of the idea and the response was such that those who took forms home to seek permission had them back the next day. The students are as keen as mustard.

They have been communicating with Tasmanian District High School, Rotary Tasmania and the Rotary Club of Hazelwood and District.

The eight students will be going over with trade teacher Brett Gay and two residents of Traralgon South District Association.

They will be away for a week and their task will be to rebuild horse shelters and sheds plus helping generally.

This venture is very attractive to the students as they love to help and they understand the situation as some of them experienced the Black Saturday bushfires here. It will also be a chance to meet new people and experience new environments.

This opportunity will also help the students to realise how important volunteering is, and the benefits which can be obtained for life in networking with other organisations.

The travel party will leave on the Wednesday, travel by bus to Melbourne, fly to Tasmania where they will be met with a bus to travel to their destination- a shared house. There they will be responsible for their own cooking, cleaning, shopping and washing. It will be a real world experience.

As part of their requirements for this trip, the students are to speak at the Rotary Club in Tasmania and also on return at the Hazelwood Rotary Club.

If successful, other students will be given the opportunity to go in term two.

These students are also keen to help out in the local

community. Some students have helped build possum boxes for the Traralgon South Men's Shed.

The VCAL Team wants to help out with the fire recovery from our recent fires.

VCAL (Victorian Certificate of Learning) Team.

A new VCAL Team has been selected with people who are keen to see this program shine at the Gippsland Education Precinct. They are teachers with an interest in the VCAL program, and who come from a variety of backgrounds such as welfare and community development, teaching and trades.

In 2013 the team members visited other schools and read up on other VCAL programs, as they wanted to develop best practice engagement and curriculum to meet the needs of the students.

The research findings have been applied to the Gippsland Education Precinct (GEP), VCAL students and their career goals. Links have been forged between local industry to ascertain the necessary curriculum skills needed to develop employability skills and to give the students the best opportunity to have a successful transition into employment.

The team has been looking at community links like the Tassie trip in the section above, opportunities in aged care and voluntary groups for students in which to take part. As the students have a diverse lot of interests to cater for, there is considerable work to find what is most appropriate for each one.

Coming to school has a need and a purpose; a clear path to an end, including literacy and numeracy skills being important tools to achieving their goals.

Work placements are part of the course and once a week over the whole year the students engage with the work place to gain experience. This can be with the same one or several different localities.

It is the student's responsibility to make the contact after obtaining the necessary contact details. This is to teach them self-motivation and self-sufficiency, initiating them into how to go about obtaining a real job.

Before they go the students are instructed in what the placement involves, and what is expected of them.

VCAL team members visit the students in their work placements, to talk to the students about their progress and to ask the employers what they expect, what skills they look for

in someone they employ. This information is used to devise a course to help develop the skills necessary for successful employment. They could include such things as appearance, dress code, good manners and respectfulness.

The team is also looking for employers who may take students in the future and making contact with them.

To complete a VCAL course, the students are required to complete a placement one day a week, do a VET (Vocational Education Training) subject another day. The VCAL Team also visits the VET tutors and asks which skills are needed to be included in the program. The other three days are spent at school doing literacy, numeracy, personal development and work related skills learning.

Personal development includes honing skills in behaviour, and understanding how to work with others.

Work - related skills include their rights and Occupational Health and Safety and how to plan for their career.

The VCAL Team is looking for groups with which to work and form future partnerships. If you are interested please contact Nicole Carder the co-ordinator on 5132 3800 or email carder.nicole.r@edumail.vic.gov.au



L-R; Brett Gay (VCAL Teacher), Jamie Maggs, Sam Flanigan, Tom Lindsay, Zac Smith, Ange Gordon (TSDA Chairperson). Absent Ethan Kessner.

Churchill Primary School

New School Year

The new school year has begun very well. Our preps have settled in extremely well and they are happily joining in all the learning tasks that make our school such a happy and busy place.

We have a number of new families joining our school community and we welcome them to Churchill Primary School. A "Welcome to School" BBQ was held on Tuesday February 25. It was a chance for parents and new families to meet the teachers and have a look at the students' work so far. The Lion's Club of Churchill provided the BBQ and was a great help to us.

We thank the Lion's Club very much for their support. Our first School Council Meeting was held on February 24. A very big thank you to the wonderful parents who volunteer their time to help with our school governance. It is such an important role.

Student Leaders 2014

Russell Northe, MLC, presented the student leaders with their badges on Monday, February 24. He gave them a letter from him, which congratulated the students and encouraged them to take their responsibilities seriously. Russell also encouraged them to have fun and enjoy their roles.

Our School Captains are Shelby Love and Mason Porykali.

Our Vice Captains are Samantha Wakefield and Caleb Bell.

The House Captains are as follows: Red: Breanna Ameerbeg and Eliza Bruerton. Blue: Dakota Wilden and Reese Adams.

Yellow: Luke Van Rossum and Courtney Henshaw. Green : Liam Beedle and Chloe Huiser

Our Junior School Council includes the School Captains and

the following students; Shayla Smith, Matthew Courtis, Nicholas McCartney, Caitlyn Sorby, Jackson McCartney, Monai Porykali, Shanelle Love and Aiden Barrett.

Swimming

Six students represented Churchill Primary School at the Yinnar and District Swimming Sports on February 17.

They were Mason Porykali, Caitlyn Sorby, Eliza Bruerton, Marli James, Chloe Huiser and Mitchell Bruerton. We are very proud of all of our swimmers and congratulate them for the way they represented themselves, their families and our school. Chloe and Mitchell have progressed to the District competition.

Koko the Clown visited the school again recently. He entertained the students with his friends Hugh and Stacey from Star FM. One of our students, Tyrone was "levitated", Ella got to shoot a banana "gun" and Hayley had some balloons she was supposed to be looking after, but they kept on popping! Stacey from Star FM had water coming out of her elbow, whilst Mr Dubois had his head pumped up to make it really big. It was an action packed show full of magic and laughter.

Our Breakfast Club has been running all month. We thank the volunteers who support us in this program.



Our Active after School program is up and running with many students taking advantage of the great activities on offer. The school Gardening Program is away again and we will soon have animals in the school for the students to look after. This exciting news is creating some wonderful anticipation and discussion on the best way to keep our animals safe, healthy and happy.



Get Fit - Play Tennis

ROUND ROBIN and TOURNAMENT

Manning Drive, Churchill



Churchill Tennis Club

Monday April 14, 2014

Churchill Tennis Club

Get Fit - Play Tennis Round Robin & Tournament
Monday, April 14, 2014 - 9.00 am - 11.00 am
Beginners entry Form

Player's Name
Phone No.
Date of Birth.....
Tick the event you would like to enter.
Age as at April 14, 2014

7 & Under	10 & Under	13 & Under	16 & Under

Conditions of Entry

* Players enter at own risk.
* The referee's decision will be final.
I understand the Conditions of Entry

Signature of Parent/Guardian

For Further information contact
Carol Scott 0409 326 769
Entries close: Thursday, April 10, 2014
Post entries to: Churchill Tennis Club, PO Box 270,
Churchill VIC 3842

Never played before?

Come along and have a go in a relaxed and friendly environment.
Racquets and balls supplied.

9.00 am - 11.00 am
Non-competition players

(have never played competition before or played Section 8 and 9 in Latrobe Valley Tennis Association or C Grade and B2 in Loy Yang Tennis Association).

11.30 am - 3.00 pm
Competition Players

To Register:
Fill in the Entry Form and Mail to:-
PO Box Box 270, Churchill 3842
by Monday, April xx
Entry Forms are also available at
www.cdnews.com.au
More Information?
Contact Carol Scott 0409 326 769

Churchill Tennis Club

Get Fit - Play Tennis Round Robin & Tournament
Monday, April 14, 2014 - 9.00 am - 11.00 am
Competition entry Form

Player's Name
Phone No.
Date of Birth.....
Tick the event you would like to enter.
Age as at April 14, 2014

Section Played		
Latrobe Valley	Loy Yang	Other

Conditions of Entry

* Players enter at own risk.
* The referee's decision will be final.
I understand the Conditions of Entry
Signature of Parent/Guardian

For Further information contact
Carol Scott 0409 326 769
Entries close: Thursday, April 10, 2014
Post entries to: Churchill Tennis Club, PO Box 270,
Churchill VIC 3842

Heaps of trophies to be won

School Holiday Fun

Sausage Sizzle

\$2
Only
to Enter
(\$5 Family)



Lucky Door Prizes



Sports

Churchill Junior Basketball



Churchill Junior Basketball Club recently had a successful tournament at Warragul, with under 10 boys and under 12 boys winning their Grand Flns. This has not been achieved by the Association in over a decade and they were all very proud to have broken the drought.

Churchill sent 4 teams to the Warragul tournament - under 10 boys, under 12 boys, under 12 girls and under 14 girls.

Games were played on both Saturday and Sunday.
 . Results were-
 Under 10 boys-
 Churchill defeated Warragul 2, 20-18. Churchill defeated Phillip Island, 28-12. Churchill defeated Foster 15-14. Churchill lost to Sale 11-25.

Grand Final (Division B)-
 Churchill defeated Traralgon 29-22.
 Under 12 boys-
 Churchill defeated Foster 34-21. Churchill defeated Traralgon 2, 27-26. Churchill defeated Moe 2, 49-20. Churchill defeated Warragul 2, 41-28.

Grand Final (division B)-
 Churchill defeated Poowong 37-28.
 Under 12 Girls-
 Churchill drew with Traralgon 2, 8-8. Churchill lost to Traralgon 2, 8-13. Churchill lost to Korumburra 8-25. Churchill lost to Moe 2, 6-19

Under 14 girls-
 Churchill lost to Phillip Island 16-32. Churchill lost to Sale 8-18. Churchill lost to Moe 2, 8-41
 Churchill lost to Traralgon 2, 7-37.

If any children are interested in playing basketball at Churchill, their parents can contact Jason Sutherland, on 0481 358 158. The new season begins on April 28.





**FUNCTION ROOM
FOR HIRE**

Reasonable Rates. Ideal for:

- Birthdays
- Engagements

To Book Call Jenny
Ph: **5122 2884**




Sports

Churchill Monash Golf Club

Young people encouraged to try golf



Above: Coaches at back: Ken Hills, Di Scurloch, Ann Hibbert, Greg Byers, Jill Beck. Clinic left to right: Brandon Barnes, Brad Gill, Sophie Hilditch, Brad Wilson, Gabe Hilditch, Jai Jose. Missing: Tanner, Nixon and Jacob.

The Churchill and Monash Golf Club and Victorian Golf Foundation, in association with the Churchill and District News, have staged a series of Golf Come and Try days at the Churchill and Monash Golf Club Course.

Nine young people have come along to learn the skills and etiquette of golf and see if they would like to play this sport.

Five enthusiastic golf club members have been coaching the participants. Club Vice Captain Greg Byers demonstrated skills, then with Ann Hibbert, Jill Beck, Di Scurlock and Ken Hills, coached and encouraged the youngsters.

A sponsorship grant from the Golf Foundation provided the sets of clubs that were used at the Clinic, and Drummonds and On Course Traralgon gave some markers and tees for the juniors to use.

With golf clubs and accessories provided, in week one the children learnt putting and chipping moves. Week two saw them using the driving range for long iron and driving skills. In week three the etiquette and rules of golf were the main focus, then playing three holes on the course using modified rules. For example: What to do if you hit out of bounds, into the water or up against a tree?

Week four will be a competition using modified rules and playing four holes followed by a friendly break-up with presentation of certificates and framed photos of the players on the golf course.

When this course of 4 weeks is over the participants have the option of joining a Junior Group, in the Latrobe Valley, or if there is enough interest, a Junior group at the Churchill Club. Membership would be \$30 annually.

This is a reasonable membership fee, for the club sees these

young people as the golfers of the future. Also they are proud of the fantastic facility at Churchill and want others to know it is there and to use it.

Some of the parents of the participants are keen golfers and see this as an opportunity to enthuse their own children and make it a family sport.

During daylight-saving time, these youngsters and their accompanying supervising adults, have the free use of the course.

Churchill and District News has been proud to be a part of this venture and wish the budding golfers all the best with their efforts.

They thank the Golf Club members for their enthusiasm.

The Churchill and Monash Golf Club run a Ladies competition on a Tuesday morning. The cost is \$7 plus \$3 for lunch.

The Men's competition is run on Saturdays, but also attracts some ladies.

The Sunday competition is a mixed competition.

Wednesday's competition is called the Chicken Run and is open to all comers. The cost is \$4 and 9 holes can be played between 2.30pm and 5pm

For further information, including golf tee-off times, membership fees and future Ladies or Junior clinics, please contact the Ladies Captain, Dawn Judkins on 5122 2096, or the Men's Captain, Bill Barnes 5122 2441

We welcome all inquiries about playing golf at Churchill -Monash Golf Club, wherever you live.

It is a Game for Life, for all age groups!



Brandon Barnes with Sophie Hilditch, Gabe and Jai.

Churchill Monash Golf Club Results

Churchill Monash Golf Club Results
February 8, 2014 - 2 Person Ambrose.
Winners - A. Sharrock and P. Ludlow 62 ¾.
Runner up - R. Scurlock and D. Byers 63
D.T.L. P. Smartand and G. Down 64 ½
I. Heppleston and D. Radnell 64 ¾
R. Maddigan and K. Hills 64 ¾
N.T.P. 3rd A Sharrock, 12th D. White 14th
D. White
Ladies 2 Person Ambrose 11.2.14
Winners; M. Munckton (32) and M. Dear
(15) 70 ¼
D.T.L. M. McQuillan (41) and J. Blizzard
(28) 72 ¾
N.T.P. 5th L. Peake, 12th M. Dear 14th. M.
Dear

Results 15.2.14
Captain and Presidents Challenge
Captain Winner - C. Hogbin 47
Runner-up - B. Barnes 45
President Winner - J. Thorpy 42
Runner-up - A. Casey 40
N.T.P. 3rd H. Martin, 5th D. Ellwood, 12th
C. Cummings, 14th P. Coad.
D.T.L. G. Blizzard 42, P. Ludlow 40, J.
Banfield 39, J. Robinson 38, D. Ellwood 38, P.
Williams 32c/b
Captains Team 652 Presidents Team 634
16.2.14 Kickbuttday

Lady winner - M.
McConville 37c/b
Runner-up - D. Judkins 37
Mens winner - B Barnes 41
Runner-up G. Blizzard 35
D.T.L. D. Stait 37, G.
Hogbin 34, P. Smart 34,
Ladies N.T.P. 5th H.Croft,
14th J. Armstrong,
Mens N.T.P. 12th G. Beyer,
14th C. Hogbin,
Ladies Team Ag.33.66
Mens Team Ag. 27.78

18.2.14 Captain President
Challenge (Ladies)
Captain Winner E. Leggo
(45) 55pts.

President Winner M. McQuillan (41) 35 pts
N.T.P. 3rd M. McConville 5th E. Leggo,
14th L. Peake,
Captains Team Winners
Churchill Monash Golf Club Results
22.2.14 Monthly Medal. Sponsor:
Churchill Maintenance and Fabrication
Grade: D. Byers (12) 68net
B Grade: S. Sanders (20) 66net
C Grade: H. Speake (32) 71net
D.T.L.: P. Coad 70, I. Wilson 70, J.

Thornby 71, A. Sharrock 71, J. Keighran 72, J.
Ambrosini 72, T. Sterrick c/b, K. Hills c/b
N.T.P.: 3rd S. Sanders, 5th R. Welsh, 14th
D. Byers
Scratch: D. Scurlock 76
Putts: G. Miller 26
Ladies Winner: V. Verheyen 72 net

23.2.14 Stableford
Winner: R. King (18) 38pts
D.T.L.: D. Ellwood (12) 34pts.
N.T.P.: 3rd D. Ellwood, 12th D. Ellwood
25.2.14 Open Day 4B.B.B.

Winner: M.McQuillan (41) D. Judkins
(26) 43pts
Runner-up: J. Armstrong (44) M. Dear
(15) 41pts
Visitors: J. Thorburn (19) C. Trembath(22)
41pts
9 In: M. Thompson (22) B. Stimson (20)
22pts
9 Out: H. Croft (34) M. Munckton (32)
21pts
N.T.P. 3rd L. Peake, 5th K. Ahearn, 12th B.
Whitehead, 14th V. Verheyen



POOH CORNER CHILD CARE

Call (03) 51226227 to make an inspection appointment

- Open from 6.30am to 6.30pm.
- Fully qualified, caring, attentive staff.
- Full time, part time or occasional care for 0-5 years.
- Educational curriculum that fosters and enhances children's development.
- Providing care for the Latrobe Valley & Monash community for over 30 years



Pooh Corner
Child Care Centre
EST. 1980



Churchill Hub
Philip Parade, Churchill
Web: mugsu.org.au



MUGSU Presidents Welcome

Daniel Whittingham - MUGSU President

Hello readers! My name is Daniel Whittingham and I am the president for MUGSU. I have been on the MUGSU board in the previous year as the Environment Director which has given me the experience and knowledge necessary to ensure that the year of 2014 is an exceptional one in all aspects of the word.

But what exactly is MUGSU Daniel? Glad you asked! MUGSU is the student union here at Gippsland. We are an organisation run by students that ensures that everyone here is treated fairly, sufficiently supported and has the most amazing university experience they can. We run a variety of events such as Wednesday night parties, free barbeques, a snow trip and many many others.

Need some childcare? Well lucky for you we run the childcare centre down in Churchill which accommodates for children aged 0-5 years old. How about just some general information or somewhere to answer your questions? Then head to the MUGSU Info Terminal, which is opposite the Cafe, where you can get all your questions answered and any information you may need.

MUGSU also have a vast variety of Clubs and Societies up and running at the campus. Some of those clubs include: International Students Association, Gippsland Association of Postgraduate Students, Ping Pong Club, Fishing Club, Christian Union and several others. If there isn't a club of something you're interested in, you can just start one up yourself!

One of the key services provided by MUGSU is the advocacy service. This is where we can support and guide you if you were to get into a dispute with the University. As an independent and autonomous student organisation, we offer an unbiased view on issues and focus on the welfare of each student.

Feel free to come into MUGSU if you have any questions or just want a chat! Chuck our Facebook a like to stay updated on all the current campus information. Or if Twitter is more your thang then follow me on twitter at: twitter.com/MugsuPresident. And for any other contact information head to our website and I hope to see you around the campus having a grand old time!

More than 500
new university
students have just
started at Federation
University
Gippsland

