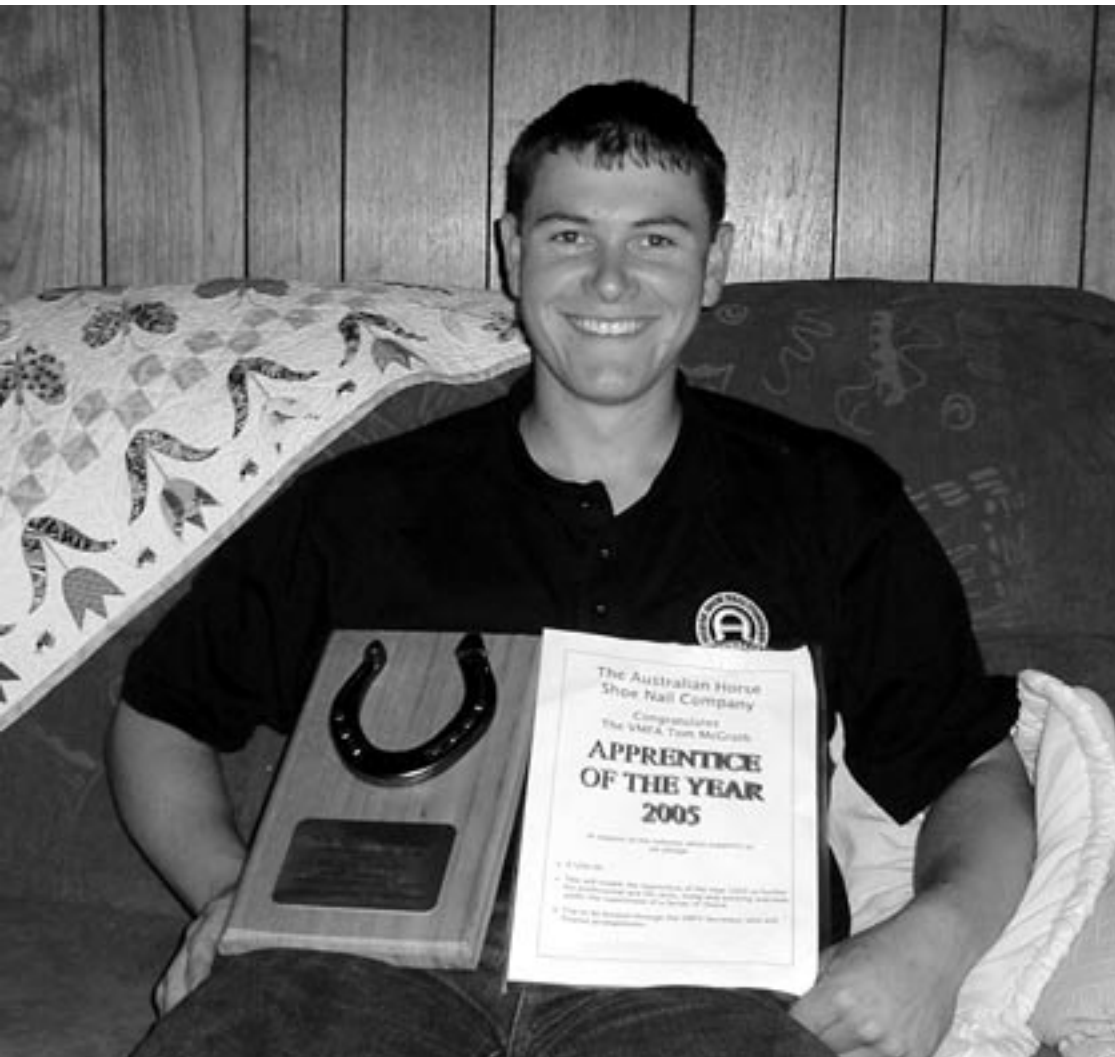


CHURCHILL & DISTRICT NEWS

Est. 1966

William Collyer Apprentice Of The Year

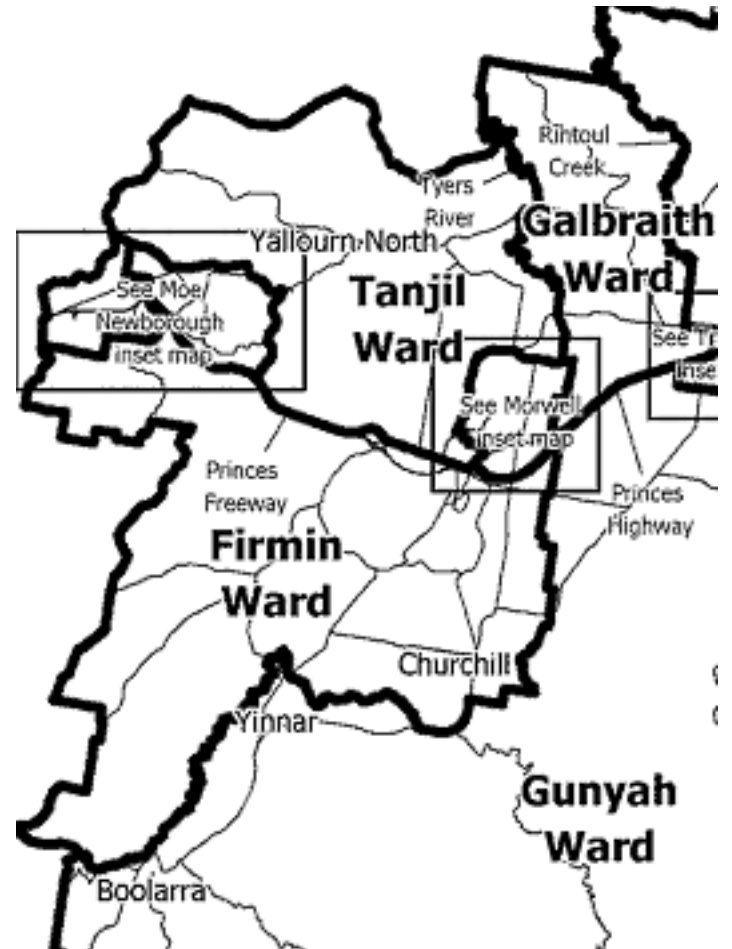


FOR the second time, William Collyer has been awarded "Apprentice of the Year". William completes his four year apprenticeship in February 2006. He has successfully completed all his exams, practical work and Trade School requirements, to become a farrier.

This award entitles William to \$1,200:00 for a trip overseas to wherever he chooses, and with whomever he chooses. His preferences are Britain or America. This aspect will be finalised by the Victorian Master Farriers Association.

The award was presented at the Annual Master Farriers Ball at the Victorian University Conference Centre in Melbourne.

William is from Churchill, and proud of it! He attended Churchill Primary School and Kurnai Campus Churchill. He describes his apprenticeship as hard work, but very rewarding. He feels fortunate that he has had great teachers in Richard and Wayne Farrar, whom he sincerely thanks. Congratulations William!



All Eyes on Firmin Ward

FIVE candidates are vying for Firmin Ward in the Latrobe City Council Elections - Darrell White, Bob Smith, Howard Williams, Rasa Bennett and Peter Hall.

All are on the campaign trail so we asked each one three questions that we thought were important to residents.

Firstly we asked them to say a little about themselves, their employment, community commitments etc.

Secondly we asked their opinion of

the Churchill Intergenerational Hub and the shelving of the hard rubbish collection.

Lastly we invited them to comment on other issues that they saw as important to Firmin Ward.

All five responded and their answers are on pages 16 and 17.

This election is likely to be decided on preferences so voters should look carefully at what each has to say.

TWO GREAT COMPETITIONS



**WIN A BIKE
OR
WIN A SANTA SACK FULL OF
GOODIES
TURN TO PAGES 20 AND 21
TO ENTER**



Pondage Pursuit Sunday November 20

**Cash Prize \$1000 First Place
Cash Prize \$400 Second Place
Cash Prize \$100 Third Place**
The Pondage Pursuit is a trivia/games challenge along 3 and a 1/2 kms of Hazelwood Pondage

For more information go to page 13 or www.cdnews.com.au and follow the links

Churchill & District News - Proudly Sponsored by:



**International Power
Hazelwood**



Dainbridge Financial Services Pty Ltd

Shares and house prices are high,
Time to sell, or maybe time to buy,
What to sell, or what to keep??
Should you look before you leap?
You need Dainbridge,
For the how and for the why.

Dainbridge Services
49 Switchback Road, Churchill 3842
Phone: (03) 51 222 033 Fax: (03) 51 222 733

EDITORIAL

Welcome to a bumper edition - the biggest yet! It is our third birthday so I would like to take this opportunity to thank all our volunteers who give their time freely to bring you the News.

The summer is fast approaching and the danger of bush fires looms large once again.

There are, around Churchill, many vacant blocks that have not been maintained over recent months. They are unsightly and a fire hazard. One block

close to where I live is at a bus stop - the grass is as high as the children who wait there for the school bus.

Latrobe City is currently inspecting all vacant blocks in the area and those which are not mown will be written to.

However, it would be far better if these blocks were mown regularly without prompting - it will reduce fire and safety hazards. The residents who live close to these blocks would really appreciate it too! Ed.

Contributions

Articles for publication and letters to the Editor can be sent to:

Churchill & District News PO Box 234, Churchill, 3842

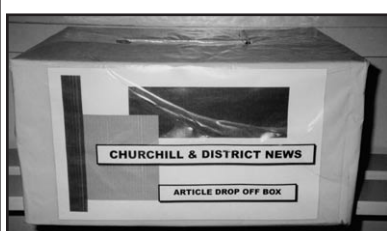
Or Email: editor@cdnews.com.au

All articles must be submitted by the 30th of each month for publication in the second week of the following month.

Advertising enquires can be addressed to:

Peter Prokopiv Churchill & District News PO Box 234, Churchill, 3842

Tel: 03 5122 2589 or 0402 406 376



**Look out for our Article Drop Off Boxes Located at:
Cafe Le Mac, Churchill Primary School, Churchill Library, Co-Operating Church and Monash Uni Reception.**

Drop off Box now at Cafe Le Mac

Churchill & District News

THE CHURCHILL & DISTRICT NEWS IS PRODUCED UNDER THE DIRECTION AND CONTROL OF THE CO-OPERATING CHURCHES OF CHURCHILL. THE CO-OPERATION IS MADE UP OF THE ANGLICAN, UNITING AND CHURCHES OF CHRIST.

Disclaimer

The Churchill and District News wishes to advise that the views or remarks expressed in this publication are not necessarily the views of the Editor or Working Party and no endorsement of service is implied by the listing of advertisers, sponsors or contributors.

The hardest part about the Survivors' Walk at The Cancer Council Victoria's Relay for Life is qualifying

AFTER facing what may be the biggest test of their lives in battling cancer, survivors will be recognised for their strength and courage during the opening lap of The Cancer Council Victoria's Latrobe Valley Relay For Life at Joe Carmody Regional Athletics track, Newborough.

All cancer survivors are welcome to take part, whether they are a member of a Relay for Life team or not. They will wear a red sash during the lap of honour as Relay participants cheer them on.

Latrobe Valley committee chair Bianca Pezzutto says the Survivors' Walk is a great way to unite the many people in our community that have survived a cancer diagnosis.

"The Survivors' Walk is open to people who have battled cancer and are now cancer-free, as well as those currently undergoing treatment," Bianca says.

"You do not need to have raised any money or be a member of a Relay team to take part, and we would encourage all cancer survivors to take part in what will be a special celebration of life to start this very important event."

Bianca says carers are also welcome to take part in the opening lap in recogni-

tion of the important role they play in supporting survivors.

A moving Candlelight Ceremony will also be held at approximately 8.30pm. Hundreds of candle tributes bearing personal messages will line the inside of the track, lit in memory and support of someone fighting cancer or in memory of loved ones lost. People can buy candles at the track on the night.

Cancer survivors wishing to take part in the Survivors' Walk can register at Joe Carmody Regional Athletics track, Newborough between 11.00 and 11.30 on Sat 12th November. The walk is part of the free Opening Ceremony which begins at 12 noon.

Latrobe Valley Relay for Life will be held on 12 & 13th November.

So far, more than 200 people in 15 teams have registered to walk, stroll or run in Latrobe Valley's Relay for Life.



Gardening With Arch Van Berkel

Why Do We Prune?

To control growth

Before transplanting plants.

When plants are old and we want to rejuvenate them.

For special purposes like making hedges.

When Should We Prune?

Roses should be pruned in Winter.

Deciduous fruit trees in Winter.

Flowering shrubs after flowering.

Picking flowers is a natural way to prune.

Do not prune in Autumn. Any new growth may be damaged by cold conditions.

Do not prune heavily in a drought.

How Do We Prune?

Hedges are pruned to shape along top and sides.

Roses and deciduous fruit trees should be pruned to a cup shape. Remove cross branches that may rub together and cause the bark to be damaged, allowing the entry of disease.

Prune to an outward facing bud.

Prune young fruit trees for frame before fruit regime. Establish the frame and the fruit will follow.

Citrus fruit trees, prune to shape. Even up lopsidedness with a light prune. Feed in Spring.

With What Do We Prune?

Secateurs. There are some ratchet types for those with arthritic hands.

Loppers. These longer handled pruners allow for added leverage and make pruning larger branches easier.

Pruning saws are light. Some have retractable handles.

Roses

Approximately seven weeks from pruning in winter, roses will come into flower. After the first flush, prune again. Four weeks later, approximately, with the warmer weather, the roses will bloom again. This prune should be approximately half the prune of the winter prune (4-6 inches). Feed with Osmocote, Blood and Bone or Rose Food.

Fruit Trees

Loose rooted fruit trees are available in winter (about August). They are less expensive to buy and include plums, apples and pears.

Fruit trees should be pruned when you plant them. Prune to outward facing buds to ensure a cup shape. Only buy a grafted fruit tree for best results, and true fruiting.

Standardisation

This means to prune the plant so that a long stem without any leaves or branches results, leaving the foliage and flowers on the top of the plant.

Remove all side leaves and twigs etc. Round out the top.

How Do You Tell If A Plant Is Dead?

Nick the bark. If the wood beneath the bark is brown, it is dead. Nick further down the branch, until you find it is green below the bark. Prune in the green section, pruning off the dead wood.

Natives

These can also be shaped and pruned to keep density, and control size. Do this after flowering. Do not use phosphorous fertilisers on natives. It kills them. Use



Arch Van Berkel

Osmocote for Natives. Tip pruning will thicken up the plants. Prune regularly, annually, not every four years!

Re-Potting Potted Plants

Score the roots around the outside of the boll of soil. Cut with a knife, around the top outside edge of the boll, before placing the plant into the next size pot up, or the ground.

When re-potting from a tube, go to a four inch pot then, six, eight and twelve. Do not jump from a small to large pot. This can encourage over watering causing drowning of the plant.

Lawns Versus Garden Beds: Watering

Lawns are labour intensive when you think of how much effort is needed to keep a lawn looking in top condition. Garden beds are more expensive initially, but plants will grow, and they will be less work than a lawn, especially if you mulch. Plant established plants, as they need less water. Water 1-2 times a week heavily, to encourage plants to put down deep root systems. The best time to water is late afternoon or early morning.

Mulch

This can be newspaper, bark, pine bark. Mulch saves up to 85% less evaporation, and provides insulation in extremes of temperature. It also reduces the weed problem.

Compost

This is a marvellous way to use your fruit and vegetable scraps etc. Mix some and use it in potting or in a hole for a new plant.

Hydrophobic Soil

This is soil that will not easily absorb water. It is dried out. You can use Crystals, SaturAid, even dish-washing liquid, to help the soil to re-hydrate.

Crystals must be mixed into the soil mixture. SaturAid can be added to the top of the pot or on the ground. It will work its way down into the soil.

Do not overfeed in a drought. Soaker hoses left on during restriction times can also do the job.

Grass Clippings

These should be used sparingly in thin layers.

Garden Pest Sprays

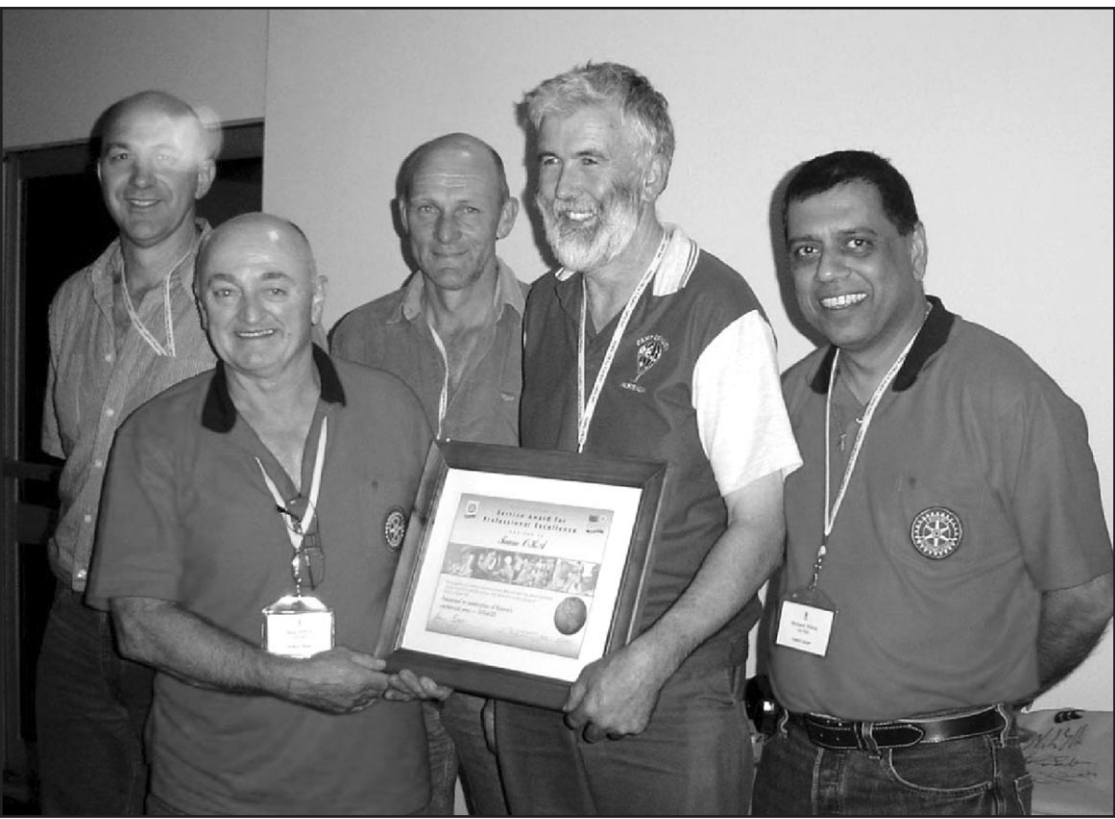
For example for Woolly Aphids. For best results spray early in the morning, not in the heat of the day. Follow the manufacturer's directions

Water Resistant Plants

Here is a list of plants which do not require a lot of water, and therefore should be considered in our warming global situation

- Agapanthus
- Red Hot Pokers,
- New Zealand Flax
- Banksias
- Agaves
- Bottlebrushes
- Buddleias
- Oleanders
- Grevilleas
- Pigface,
- Gazanias (pictured left)
- Liriope
- Yuccas





Rotary Centennial Service Award to Local Lions for Professional Excellence



By JOHN BARKER, Publicity, Lions Club of Churchill & District

THIS award sees the coming together of two like community minded service organisations to recognise the excellence of service to the community by a group of individuals under the umbrella of Lions International in the interests of children in need - the children of Camp Quality and their families.

The Rotary Centennial Service Award for Professional Excellence has been designed so that districts may administer a competition among clubs in their districts to recognize one candidate each from 10 clubs per district.

Rotary International President 2004-2005, Mr Glen Estess, introduced the new award to recognise the great work of Non-Rotarians in the Centenary of Rotary Year (so this award has never been awarded before and will never be awarded again) The full title is "The Centennial Service Award for Professional Excellence to Non-Rotarians."

Mr Niall O'Neill of the Rotary Club of Hunters Hill said "While the award is competitive within the district, it is intended to recognize exceptional community representatives, who may not have been exposed to the work and values of Rotary, yet their dignified ideals are similar to Rotary.

The criteria - I had to convince my District Governor, Mr Bruce

Allen, to award one of only twelve awards in our area to go to "Victorian Lions Club members." After reading my submission he was pleased to award one to TEAM OKA, but sorry that he could not give one to each member of TEAM OKA, because he believed they all deserved one."

The Camp Quality esCarpade is a fun car rally which is not even really a rally - but rather a group of people who prepare and run their cars in a semi-serious fashion to raise funds for Camp Quality.

Camp Quality is a national non-profit charity committed to bringing fun therapy to every child living with cancer, as well as their families through ongoing quality recreational and educational programs.

Camp Quality passionately believes in the power of fun in helping children and their families overcome the challenges that cancer and illness bring.

The program is unique and provides a wonderful opportunity for a child with cancer to put their illness aside and just be a child again, enjoying a variety of activities that are fun.

Mr Niall O'Neill said "The Rotary Club of Hunters Hill entered Car No 9680 (that's our District) in the 2004 Camp Quality Escarpade, and we had all sorts of problems!! Mostly loose nuts and bolts, but that can cause enormous trouble when it's the brakes, torque converter etc.

We had lots of help from TEAM OKA along the way and when we went off the side of a cattle grid we needed them big time."

Reg Stirling, the leader of TEAM OKA, is a member of the Lions Club of Yinnar and District, along with his deputy Geoff Stolk. They co-opted Tony Lawless onto the TEAM OKA because of his background in mechanics and his attitude of wanting to be part of the team.

With his wife Dianne, he runs his own business, R & DP Stirling Motors, which he willingly shuts down for the period of the esCarpade so he can be "part of the action". He also acts as scrutinizor for the esCarpade entrant from the Lions Club of Churchill and District, car 201, and together with Lion Kevin Hogan of Churchill Tyre and Brake perform work on the vehicle to bring it to a condition where it 'may reasonably be expected to complete the event'. All of this is of course free of charge.

Reg and the TEAM OKA have been part of the Camp Quality Escarpade scene for several years, spreading his and his team's expertise to ensure the majority of entrants are kept mobile. All participants hold them in very high esteem. Well done team!

Pictured above are "TEAM OKA" members Lion Reg Stirling, Tony Lawless and Lion Geoff Stolk with members of the Rotary Club of Hunters Hill.



Bulk Billing

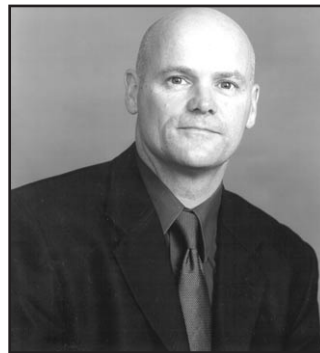
- * Family Medicine
- * Women's Health
- * Counselling
- * Minor Surgical Procedures
- * Pathology Service
- * Travel & Health Immunisations
- * Industrial Medicals
- * Visiting Paediatrician
- * Visiting Physiotherapist
- * Visiting Surgeon

Consulting Hours

Monday to Friday 8am - 5.30pm
 Saturday 8am - 1.30pm
 24 hour on call service
Tel: 5122 2555

9a Georgina Place, Churchill, 3842

"Caring Family Medicine"



Need advice, information on State Government matters?

For friendly advice and assistance please contact

Brendan Jenkins MP
 State Member for Morwell District

Phone: 5133 9088

Fax: 5133 9388



"Natures Own" Health Consultant and Naturopath Adam Pincus

Will be available here on Thursday 1 December 2005

9.30 am - 3.00pm

20 Minute Consultation Free!!

Please feel free to take advantage of this great opportunity to discuss any health issues you may have. For bookings please ask for the Vitamin Consultant/Manager in this store.

Churchill Amcal

Telephone: 5122 1390

Monday - Friday 8.30 am - 6 pm
 Saturday 9 am - 1 pm



SANDRA KUEMPFLIN
Morwell Florist
 SHOP 31 MID VALLEY SHOPPING CENTRE
 MORWELL PH/FAX: (03) 5133 7322
 www.morwellflorist.com.au

Christmas Cards For Charity

LATROBE Information and Support Centre (LISC) is once again running a Charity Christmas Card Shop.

Over 20 charities are represented, including the Australian Red Cross, The Cancer Council, Amnesty International, Motor Neurone Disease Association, Royal Children's Hospital, The Royal Women's Hospital and many more.

Rotary Club's Plum Puddings and Christmas Cakes are also for sale at \$12.95 each.

Last year LISC collected over \$6,000 for various charities.

There are over 100 cards to choose from as well as calendars and tea towels. The cards range in price from 40c upwards. LISC is open Monday - Friday from 9.00am - 4.00pm

and is located at 20 Tarwin Street, Morwell.

Latrobe Information and Support Centre is a not for profit community based organisation staffed mainly by volunteers.



Church Snippets

Hillendale Singers

On the 9 October, the very lucky crowd who attended the afternoon Hillendale Singers Concert, were served a treat of musical entertainment. This talented group give their services free for groups to use their concert as a fundraiser. We are very grateful to conductor Jeff Beynon, and his choir for making themselves available to us. One of the things that amaze the audience is that they sing their whole program without words or music.

mowed. The empty, rumbling stomachs which resulted from all this activity were satisfied with the lunchtime barbecue, supplied by people who were unable to attend as well as those present.

Ladies Fellowship

The Ladies Fellowship invited Ashley Whitehead to be their guest speaker. Ashley spoke of her trip recent to Vietnam and Cambodia, entertaining all those present with her adventures.

The Ladies also organised and ran their annual



Hillendale Singers

Working Bee

With our special 40th Anniversary service/luncheon



Ruth Campbell and Julie Berryman

just around the corner, the church family gathered to give the church, inside and out, a thorough spring cleaning. The trees which had needed to be removed because they were causing the building to crack, were cleared, mulched and spread on the newly created garden bed. Cobwebs were dispatched, windows cleaned, cupboards emptied, washed and repacked. The grounds were

Winifred Kiek service. George Telford was the preacher and took a Churches of Christ communion service. His beautiful daughter, Sarah, performed a moving dance which she had choreographed herself. A retiring offering was collected to support the Winifred Kiek Scholarship. This scholarship provides the opportunity for further theological training to better equip the scholar to provide leadership in her own country, church and community. The scholarship covers fares, tuition fees and accommodation. It is awarded annually.

Saturday Breakfast

Our Guest Speaker was Peter Cavanagh. Peter, his wife Mim and their two children have been involved in Christian work in South East Asia since 2003. They are currently home on leave. Peter spoke about his experiences and work. He finished his presentation with a beautiful expressive song which he had written.

Next Month's breakfast is at the Fern Nursery at Boolarra. They will serve the breakfast. Numbers must be known before the day. Please contact Keith Enders if you intend to go.

CHAPLAINCY CONTEMPLATIONS

BY Rev'd LYN PORRITT

How the rhythm of the year flows around again! Here we are at the end of Semester 2, 2005 with assignments due in for students and then exams. All this will be over by the middle of November and then there is the waiting for results. Thus it is, each year!

As it says in Ecclesiastes Chapter 3, Verses 1-8,

For everything there is a season, and a time for every matter under heaven:

- a time to be born, and a time to die;
- a time to plant, and a time to pluck up what is planted;
- a time to kill and a time to heal;
- a time to break down, and a time to build up;
- a time to weep, and a time to laugh;
- a time to mourn, and a time to dance;
- a time to throw away stones, and a time to gather stones together;
- a time to embrace, and a time to refrain from embracing;
- a time to seek, and a time to lose;
- a time to keep, and a time to throw away;
- a time to tear, and a time to sew;
- a time to keep silence, and a time to speak;
- a time to love, and a time to hate;
- a time for war, and a time for peace.

It seems to me that there is a lot of time being given to revenge, hate, fear and war and very little time being given to love, acceptance, tolerance and peace in the human community of this planet as we move towards the end of this year.

While it is a very natural human reaction to hate when injustice and oppression is experienced, it was not the way

Jesus recommended. He said "love your enemies". We still find this very hard to do, even those of us who call ourselves Christians.

At our final Thursday service before the students get stuck into their exams, we had a prayer service for the state of the world and the suffering people; whether this suffering was caused by war or by natural disasters happening on this planet.

Sometimes it is hard to know what to do to help and when so much happens people can become "compassion fatigued". It is very important to recognise when you are reacting with compassion fatigue and to rise above this and give, in whatever way you are able. It is also valuable to pray.

Let us pray together,
God of all truth,
teach us to love you with heart and mind.

Bless our schools, colleges and universities

that they may be lively centres for sound learning, new discovery, and the pursuit of wisdom.

May all who teach and all who learn seek and love the truth, and in humility look to you, the source of all wisdom and understanding,

through Jesus Christ our Lord. Amen

Yours in Christ,
Rev'd Lyn Porritt,
Anglican Priest,
Chaplain,
Monash University, Gippsland Campus

Saturday Breakfast With Peter Cavanagh

By KEITH ENDERS

The October Saturday Breakfast was held on the 29th and Peter Cavanagh was the guest speaker. Peter, his wife Mim and two children have been based in South East Asia for two years working with a Christian group and they are now on what is called Home Assignment for four months before returning.

Peter began his talk with a quiz for the audience about the area, to see how much they knew about it. Some of the questions were quite well answered others not so well. Peter showed a number of photos depicting the life and people in the area where he has been working, some of which were outstanding.

Peter described how difficult it is in countries of many millions of people to get away and have some space around, unlike Australia. The government does allow registered churches to operate but underground churches also function. It does not allow people to be instructed in or spoken to about Christianity inside people's houses, but this is overcome by talking to them in the open or outside homes. Peter has developed his own way of learning the local language and approached one of the local universities to trial the method in teaching the local students English and

they allowed him a 6 week trial.

Final Saturday Breakfast For 2005

This will be held on Saturday 26 November at Boolarra Plants, 55 Tarwin Street, Boolarra starting at 8am. The hosts Rob and Marietta Herni will be providing the breakfast and then talking about their business and interest in ferns including an opportunity to ask questions.

To enable them to cater adequately for the breakfast, those wishing to attend must notify Keith Enders by NOON WEDNESDAY 23 NOVEMBER. Phone 51221148; e mail: kbenders@net-tech.com.au



Peter Cavanagh

Christ Church Meeting Room Refurbished

THE meeting room at Christ Church Boolarra has been refurbished and looks great with new carpets, curtains, furniture and repainting. It can now be used to reach out to the community.

Services continue to be held at Boolarra the first two

Sundays of the month, Yinnar the second tow and Yinnar South on the fifth Sunday. Holy Communion was celebrated at the Holy Innocents on 30th October.

For assistance contact the Minister, Bob Brown, on 5122 1480

CHRISTMAS SERVICES

Churchill

CO-OPERATING CHURCHES IN CHURCHILL

6:30pm Christmas Eve: Crib (family) service

11:00pm Anglican Holy Communion (Rev. Lyn Porritt)

9:30am Christmas Day: Uniting Church Christmas Service (Rev. Dr. Bob Brown)

CHURCHILL CHRISTIAN FELLOWSHIP.

Christmas Eve: 7:30 pm Service- supper to follow

Boolarra/Yinnar/Yinnar South

Christmas Eve: 11.00 pm Anglican Holy Communion at Boolarra (Rev. Dr. Bob Brown)

Christmas Day: 9.30 am Anglican Christmas Service at Yinnar (Rev. Lyn Porritt)

Church Times

Co-operating Churches in Churchill

Rev. Dr. Bob Brown
Williams Avenue, Churchill.
Tel: 5122 1480
Glenda and Ian Combridge
Tel: 5166 1819
Sunday Service: 9.30am.
Choruses: 9.20am

Lumen Christi Catholic Church

35 Walker Parade, Churchill
Tel: 5122 2226
Father Malcolm Hewitt
Saturday: Mass: 7.30pm
Sunday: Mass: 9.30am
1st, 3rd, and 5th Sundays: Yinnar:
Mass: 11.00 am
2nd and 4th Sundays: Boolarra:
Mass: 11.00am

Churchill Christian Fellowship

Maple Crescent, Churchill.
Pastor Tony or Hermanna Marsden:
5122 2777
Sunday: 10.00am
Ladies Meeting: Tuesday 10.00am



CHURCHILL 40TH ANNIVERSARY EVENT

SATURDAY 12TH NOVEMBER 2005

2:00PM

GIPPSLAND EDUCATIONAL PRECINCT

INSPECTION OF FACILITY & INFORMAL GET-TOGETHER

Enter at Northways Rd
Proceed to Courtyard
Exit Jean Galbraith Drive

7:00PM

MONASH UNIVERSITY STUDENT LOUNGE

**LAUNCH OF HISTORIC PANELS
SOUVENIER BOOKLET
MUSIC BY LOCAL STUDENTS
PHOTOS & MEMORABILIA**

From McDonald Way enter
Car Park No 2. Go up ramp
to Student Lounge via
Building N 4 entrance

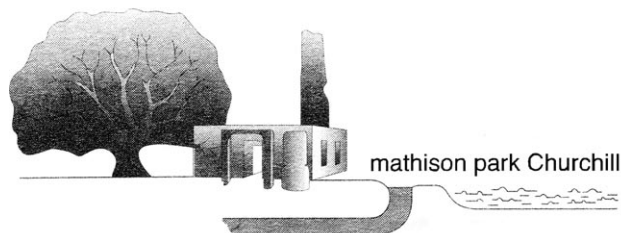
PROUDLY SPONSORED BY

**LATROBE CITY MONASH UNIVERSITY GIPPSLAND
MONASH UNIVERSITY STUDENT UNION CDCA**

EVERYBODY IS WELCOME

REFRESHMENTS WILL BE PROVIDED

Eel Hole Creek- Willow Removal



By TERRY KEY

In mid July, Ryan Bickerton from West Gippsland Catchment Management Authority, and a team from Latrobe Valley Tree Services, arrived in the park to clear the creek from Hare House to Northways Road, behind Kurnai College, of the choking willows.

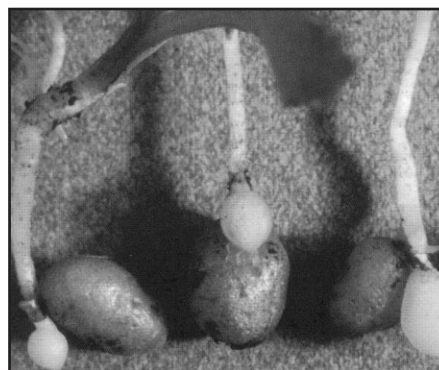
Branches were cut and chipped, and the remaining stumps treated, so that eventually, with continued management by the park volunteers, the creek may be opened up and flow more freely.

I must thank Ryan, West Gippsland Catchment Management Authority, and Latrobe Valley Tree Service team for the work carried out, to improve this section of the park.

Local Primary Schools Visit Mathison Park

Students in grades 4, 5, and 6, from Lumen Christi, Churchill and Churchill North Primary Schools have, and will be, visiting the park during October and November. They will learn about Mathison Park, look at the park's flora, and study the water quality.

They will plant native trees along Eel Hole Creek. Park volunteers see this as an education about our local environment, what is happening in Mathison Park, and what is envisaged for the future of the park. It may also encourage these students to become the volunteers of the future.



ful, and were harvested throughout the year. They provided abundant nourishment. The mostly small tubers varied in taste and in the amount of starch. They were eaten roasted or raw.

Information was supplied from "Plants of Significance to the Ganai Community", by Rob de Souza-Daw, Ken Harris and Doris Paten.

Photo of Nodding greenhood (left) by Bruce Campbell, tubers (below) by Beth Gott.

This is a photo of *Pterostylis nutans*, Nodding greenhood. It has been seen in flower very near Mathison Park

Distinguishing features:

A rosette of leaves surrounding a flower stem. The single flower is nodding with the flower stem bent forwards just below the flower.

Orchids were an important food source for the Ganai and many other indigenous communities. The tubers of the orchids were eaten. They were plenti-



Marks Jokes

Send in your Joke and Win!

Send your jokes to PO Box 234, Churchill

What makes a doctor angry?
Running out of patients.

The Milky Baa Kid.



What did the bee go on strike for?
Shorter flowers and more honey.

The other day I tried to do tap dancing. I was no good at it. On the first day I broke my leg when I fell in the sink.

What is the first thing a ball does when it stops rolling?
It looks around.

I tried to play water polo at the Churchill Pool, but my horse wouldn't jump in.

What is the punishment for bigamy?
Two mothers-in-law!

I have invented some interesting things.
A parachute that opens on impact.
An ejector seat for a helicopter.
Colour radio
An inflatable dart board.

What do you get if you cross a cow with an octopus?
An animal that milks itself.

What do you get if you cross a cow with a sheep and a baby goat?



Kurnai Campus Churchill

ABC (ABSOLUTELY BRILLIANT CONCERT)

This musical concert featured the Kurnai Band, as well as many other local school bands, to showcase the schools' musical programs.

Staff member Joseph Bonnici is involved with Kurnai as Musical Director.

He is one of the major organisers. This involves the local feeder schools for Kurnai.

PEER SUPPORT CAMP

Thirty Year 9 students have been chosen to attend this camp at Koonwarra.

school and participating in activities with Year 7 and 8s.

Awareness Days have occurred where children and parents have come together to take part in activities for the whole day.

The children have had a choice of activities including Rocket making in Science, Cooking, PE, sports games, English and Maths.

The idea of the days is to give the incoming students a flavour of what happens at secondary school. It is more fun than routine!

FUN RUN.

Kurnai Churchill's

FUN RUN The annual Churchill Campus Fun Run was...

- * Fun for students
- * Directionally challenged staff
- * Mud in the paddocks
- * No snakes in the grass
- * The sun was out for a change
- * Fun was had by all.

They will be working with the Year 7s in 2006.

They also become the Action Squad, which is involved with programs in Primary Schools such as sport, help in classes, eg Art, run sessions in the primary schools, and talk to the children about any worries they have about going to secondary college the future.

However at present this group is visiting the primary schools with a presentation called 'Conversations'. The group presents a scenario (small play) and uses it as the basis for a discussion with the students. This is a very positive group who receive a great response from the primary students.

KURNAI ART SHOW.

This Art Show was held at Kernot Hall, and finished today at 7:00pm. The Opening was held last Tuesday from 7-9 pm. It was open to the public. More news about this in next issue.

TRANSITION PROGRAM

On the 17 November, the students from the feeder primary schools will be visiting Kurnai Churchill.

There they will work with the Peer Support students doing the low ropes course which is situated behind Monash University.

The students will experience being in their 2006 form groups for the first time.

STATE TRANSITION DAY FOR GRADE 6 STUDENTS

This is to be on Tuesday 6 December. This will be a culmination of the Churchill/Kurnai Transition Program that has been running all year.

This has involved all Grade 5/6s visiting the

The students participated in the Fun Run to raise funds for the school.

CANTEEN BANDANNAS

On Friday 28 October, the school relaxed uniform restrictions, allowing the students to wear the Canteen Bandannas.

Each student paid \$3 for the privilege. The money raised was sent to Canteen which raises funds for teenagers suffering from cancer.

YEAR 10 TRANSITION AT PRECINCT

There is an afternoon visit to the new Precinct, for Year 10 students on Wednesday 9 November. The week beginning Nov. 28 is Orientation Week for the Year 10s. In this week they will be at the Precinct, and begin their classes for 2006.

There is an air of expectancy and excitement as this new venture draws closer. The benefits of this new set up will be in the accessing of facilities well ahead of current facilities available in schools.

An Open day is planned for the community to have a look.

COASTAL AMBASSADORS PROGRAM

Four of the students have been selected to attend a program to be held at Phillip Island.

It is basically a camp for students to become more aware of the environmental issues surrounding the coast.

This is a Science based camp, in which the students will see and participate with people doing research, and seal counts to address the issues identified.

Smart Board for Smart Students at Lumen Christi



Lumen Christi Grade 6 students are moving along in leaps and bounds with their computer skills this term as they learn the tricks of the new Smart Board in their

classroom.

The Smart Board is the latest in education technology and is a big screen which is interactive and connected to the world wide web for a host of classroom activities.

The Grade 6 class has also enjoyed an innovative lap-top program this year and students have been skilled in the operations of a variety of programs and have been able to take home the lap tops and share their skills with their families.

Mr Tim Ruyg is their classroom teacher and both staff and students have enjoyed the benefits of his expertise.

The Prep class remain focussed on learning to read and write and are making excellent progress.

As a treat, Mrs Webster and the Preps

the day. We all came back with a great appreciation of the work of the volunteers who make the development of this lovely recreational area possible.

Lumen Christi School celebrated Mission week in a big way in October with a special Prayer Service to pray for those around the world who still do not have enough to eat or clean drinking water to drink.

The children learned that the world has a plan to halve world poverty by 2015 and we all received wrist bands to emphasise the theme of "Make Poverty History".

The children wore casual clothes and had a cake stall to raise over \$300.00 for Caritas Australia and Children's Missions for their work around the globe.

We also had a lunchtime disco for the whole school in our new Eco Centre and it was wonderful to see the children having so much fun.

Last week our school leaders met the WorkSafe for Kids officer and then spoke at assembly of the need to be safe at school.

All of us at school need to take responsibility for a safe environment and our school captains have developed in their leadership capacities over the year to be able to share in this process.

Lumen Christi parents showed their support and appreciation for the staff with an afternoon tea to recognise World Teachers' Day.

It is important to acknowledge the hard work and commitment of good teachers and we are very fortunate at Lumen Christi with an excellent staff who were very grateful to the School Board for initiating this gesture.

Finally, we welcomed a visit to the school by Mrs Cathy Blackford who has been appointed Principal of Lumen Christi commencing in 2006.

Mrs Blackford had morning tea with the staff then visited all the classrooms and answered many questions from the children.

Mrs Blackford is currently Acting Principal at St Vincents in Morwell East.

Miss Denise McKenna, the current Principal has resigned as from the end of the year.



Mrs Webster and the Preps had a Fairy Day with fairy stories and fairy costumes and fairy bread.



had a Fairy Day with fairy stories and fairy costumes and fairy bread.

It was a fun day for them all.

The Grade 4 class recently took a walk to Mathison Park and helped to plant some trees and check out the bugs and wonders of the lake.

Our thanks to Terry Key for organising



Churchill North Primary



The Lovell family searching for frogs

Churchill North Primary



Association of German Teachers of Victoria STATE FINALS for the German Poetry Competition

Towards the end of last term Breanna Downes-Smith and Vanessa Gillet went to the state finals in Melbourne.

Unfortunately they didn't get a placing, but did really well to get there. They were up against some native German speakers and some who weren't. At the state finals entrants had to recite two poems.

The poems were: 'Die Nardel sagt zum luftballon' and 'Funf Finger frieren.' Breanna found it very nerve



Breanna Downes-Smith and Vanessa Gillet

racking. It was a fantastic opportunity and experience for all involved.

Family Dance



Everyone enjoying the Bird Dance

On Friday 7th October we held a Family Dance in the multipurpose room at the school. Mark Bruerton was our DJ for the night, lots of dancing was enjoyed by the 35 families that were there. Through the sales of tickets, food, drinks, glow necklaces and bracelets, face painting and mystery auctions over \$400 was raised for the school.

Mini-Fete

Junior School Council held a mini fete on Friday 14th October; each grade ran a stall for the 2 hours.

We had cake stalls, sausage sizzle, ice-creams, drinks, raffles and trash 'n' treasure. A fantastic time was had by all. A really big thank-you goes to everyone who helped out at the mini-fete. We raised \$600, most of which will go towards the purchase of sport equipment for the classrooms.



Breanna joined by her dog at the fun run

Reading Recovery

Big congratulations to Rickie Stewart for completing the reading recovery program.

Rickie was presented with a certificate and book at our Monday assembly. It was great to see his parents there.

Street Scene

Louise from the RACV visited the school recently to talk to the students about different aspects of road safety. She took each grade varying the content on road safety depending on the needs of the students. The infant grades had lessons on how to be the perfect passenger and were shown quiet games to play that will not distract the driver. All grades had fun with Louise and came away with some great skills to keep them safe on the roads.

Music Group Performance

On Friday 21st October our school's Music Group performed at Hazelwood House, much to the joy of the elderly citizens present. We would like to thank Mrs. Owen and all the students concerned for a great performance.

Fun Run

We held a Golden Circle Fun Run on Monday 24th October with all students endeavouring to walk or run as many laps as possible in the 1 hour. Icy-poles were a treat and students wished for more under the warm conditions. Thank you to Mrs. Dunne for organising the event and all the parents that participated.

Sports Camp

Four of our senior students participated in a 3-day Sports Camp at Rawson. The lucky participants were Rebekah Van Dyke, Taryn Browne, Ryan O'Donnell and Aiden

Huizer. No doubt they came home to have a good rest and to recover from a very active 3 days.

Frogs

Gerry from the Amphibian Research Centre of Melbourne came to school on Thursday 27th October to share his love for frogs. Gerry talked to the students and shared some frogs with them.

Then later that night about 80 enthusiastic parents and students from our school and Churchill Primary met at Lake Hyland for a night of listening and searching for our local frogs.

It was very interesting to stand by the lake and listen to the sounds and then be told that were at least 4 different types of frogs out there.

It was then down to the lake edge and with the use of our ears and torches time to see if we were able to find any of these frogs.

Nathan Lugton and the Lovell family were successful in the search.



Term 4 Churchill Primary School

AMPHIBIAN RESEARCH CENTRE (ARC) VISIT.

On the 27 October, the school was privileged to receive, as part of their schools' involvement with the Federally funded project, a visit from Gerri Marantelli, the Director of ARC.

Gerri is arguably the No.1 expert on Australian frogs. He spoke to the students for a considerable time, holding their attention.

Among the things he taught them was



Ben Hocking holding a Green Tree Frog

to identify, by call, some Gippsland frogs. All students and teachers thoroughly enjoyed Gerri's visit. The school thanks Gerri for spending his time with them.

ABC (ABSOLUTELY BRILLIANT CONCERT)

This concert was held on Thursday 27 October at Kernot Hall. The orchestral students who are part of the Primary Schools Band performed very well.

Many other schools-both secondary and primary- showcased their talents on that night. Funds raised through the concert, are to be distributed to the schools for their music programs

GRADE 3/4S WOORABINDA CAMP.

The Grade 3/4s had a fantastic camp



Jack Butler on the High Ropes Course



Elizabeth Richardson on the Zip Wire

at Woorabinda. This is a highlight of the year and is eagerly looked forward to.

The Staff who attend these camps are on 24 hour duty, and are to be commended for their commitment to this worthwhile program.

The children came home with tales of doing awesome things like going on the zip-wire, flying fox, ropes course, initiative games, cooking and night hike.

There was also the fun of the concert. There was much comparing of notes with older brothers and sisters!

The children enjoyed the camp so much there was no time to get into trouble. Their behavior was terrific!

The school wishes to thank Tony Ireland, the Camp Co-Ordinator, for his great program, and involvement with the children.

PREP ENROLMENTS.

This is a reminder to all parents who are going to start their child in Prep at Churchill P.S. in 2006.

The school needs to know as soon as possible. It is vital that they know numbers now so that planning for adequate staff for 2006, can proceed.

HPV RAFFLE

A10kg block of Cadbury chocolate is being raffled to raise much needed funds for the HPV (Human Powered Vehicle) team.

Tickets are available at the school office for \$1 each.

CLIC (Community Learning in Churchill)

This program will continue until the end of November.

16 Nov. Basic Mechanics

23 Nov. Helping Your Child with Maths

30 Nov. Review, refreshments and a display of work

LION'S CLUB STUDENT AWARDS

On behalf of Churchill Primary School, the Staff wish to thank the Lions Club for their proposed awards of \$25 to two students who have achieved well.

They also wish to acknowledge the Lions Club ongoing generous, support of their school and students.

MOVE-A-THON

Last week the school participated in their move-a-thon for two hours of activity, chosen from swimming,

Churchill walk, HPV training, dance, cricket, footy, bat tennis and basketball.

The reason for all this activity was to raise money through sponsorship, to purchase more panels of fence to complete the tall fence around the front of the school.

There were many incentives for the children to raise as much sponsorship as possible, with two bikes to be won, a participation reward for each child on the day, and an engraved plaque on the fence panel, for raising \$250 as a grade, or as a family, or as two students working together.

Next issue we will have the results of this event.



Lions Club of Churchill and District



2006 CHURCHILL CITIZEN OF THE YEAR AWARDS NOMINATION FORM

The Awards are provided by the Lions Club of Churchill & District Inc. Persons who have made a noteworthy contribution during the preceding year and / or given outstanding service to the local Community over a number of years shall be eligible.

The person being nominated must be a resident of Churchill or the immediate surrounding district.

NOMINATION FOR (Please tick appropriate box):

- Lions Club of Churchill & District Inc. Young Citizen of the Year Award
Must be 18 years or under on 26th January 2006.
- Lions Club of Churchill & District Inc. Citizen of the Year Award.

DETAILS OF THE PERSON BEING NOMINATED:

Surname: Other Names:

Private Address:

Occupation: Telephone Private: Business:

Date of Birth: Age: Marital Status: Children:

THE PERSON IS BEING NOMINATED FOR CONTRIBUTIONS TO THE COMMUNITY IN:

.....

.....

.....

.....

.....

.....

.....

.....

.....

.....

OTHER SIGNIFICANT CONTRIBUTIONS AND ACHIEVEMENTS:

.....

.....

.....

.....

PAST AND PRESENT MEMBERSHIP OF COMMUNITY/SPORTING/PROFESSIONAL BODIES, ETC:

.....

.....

.....

.....

.....

ANY OTHER RELEVANT BACKGROUND INFORMATION:

.....

.....

.....

.....

OTHER PERSONS WHO MAY BE CONTACTED FOR FURTHER INFORMATION ABOUT NOMINEE:

Name:	Name:
Position:	Position:
Address:	Address:
..... Post Code: Post Code:
Telephone:	Telephone:

TO BE COMPLETED BY PERSON SUBMITTING NOMINATION:

Mr/Mrs/Miss:

Address Post Code:

Organisation represented (if any):

Telephone:

Signature:

FOR MORE INFORMATION CONTACT:

Event Coordinator
Lions Club of Churchill & District Inc
Phone: (03) 5122 1548
Fax: (03) 5122 3890

FORM TO BE RETURNED TO:

The Secretary
Lions Club of Churchill & District Inc
PO Box 110
CHURCHILL 3842

Completed forms to be returned by Friday 18th November 2005

LIONS CLUB CITIZEN AWARDS 2006

By JOHN BARKER, Publicity.

For several years, the Lions Club of Churchill & District Incorporated have been responsible for organising and running a community function for Australia Day in Churchill involving citizens of Churchill and especially our youth.

To enhance this event, the club decided to present a Young Citizen Award and a Citizen Award to the most outstanding person in each category for their contribution to the community during the previous 12 months.

The inaugural presentation of the Citizen of the Year Award 2005 was made to Mrs Ruth Place, a very popular recipient. There were no nominations for the Young Citizen of the Year Award.

This Award is now adopted as a tradition and we ask that residents again nominate candidates. Nominees must be a resident of Churchill or reside in the

immediate surrounding district.

The nominated person's applications will be scrutinised by an independent panel of judges and the relevant winner for each category chosen. The decision of that panel will be final and no correspondence will be entered into.

The awards will be supplied and presented by the Lions Club of Churchill and District at the Churchill Australia Day Ceremony on 26th January 2006.

Lions Club of Churchill & District Inc Young Citizen of the Year Award - applicants must be 18 years or under on 26th January 2006.

Lions Club of Churchill & District Inc Citizen of the Year Award - open to all applicants over the age of 18 years on 26th January 2006.

The closing date for all applications is Friday 18th November 2005.

Lions Club of Churchill & District Supporting our Youth

JOHN BARKER, Publicity

THE club will sponsor two new Awards through the four Primary Schools in our district this year. One will be based on leadership skills and the other based on academic skills.

Each school will nominate a year 6 student to receive each of the Awards, which will be presented at an appropriate occasion. Churchill Primary, Churchill North Primary, Lumin Christi Primary and Hazelwood North Primary have all agreed to participate and we thank them for this opportunity to expand our involvement with youth in our community.

Lions John Barker, Bob Lowick and Norm Hall took part in the Camp Quality Escarpade car rally.

The route took in southern New South Wales, Little Desert region in Victoria and finished at Ballarat. It raised \$11300 (and is still growing).

Five members attended the Lions District 201V3 Convention at Drouin. Congratulations to Lion Peter McShane who was voted into the position of Vice District Governor 2006-2007.

Peter had to justify his credentials and the reason for standing for this prestigious position that he won from two other contestants.

Snippets

The Club is running Churchill Citizen Awards again this year

The Club is running "letters to Santa" again this year through the schools.

Welcome to Lion Tom Quinn, our latest new member.

President Kevin Rennie attended Churchill CFA Presentation Night.

Lions Frank Langston, John Tipping and Ross Norman - we wish them a speedy recovery

In the Annual 10 pin challenge with Trafalgar Lions and Lionesses - we won again!

Lions Christmas Cakes are now available - see Carl Hood at Australia Post or any Lions member

Following our tradition of supporting youth, the club supported the Junior Fishing Competition by purchasing prizes to the value of \$200 and supplying a free sausage sizzle for participants.

Club members also successfully catered for -

Camp Quality at Bunnings in October,

raising \$315 for Camp Quality.

Barry Sheene Grand Prix spectator bike riders

Andcam Engineering Auction

Amcal Pharmacy promotion

Catering coming up -

Sausage sizzle with Rotary at children's Advent Pageant

November 13th Bunnings

November 20th Pondage Pursuit

The Lions Club of Churchill and District is proud to be a room sponsor at Ronald McDonald House - Monash. We have sponsored a room at a cost of \$2500 per year for 3 years now. The aim is to have all rooms at the House sponsored by individuals, companies or organisations.

REMINDER - The junior and senior Lions Club of Churchill and District Junior and Senior Citizen of the year Awards are happening again - presentation at Australia Day 2006.

Fill in the nomination form and return to the Lions Club by the 18th of November. An independent panel will judge the applicants.

The Lions Birthday Club, sponsored and run through the Churchill & District News by our Lions Club, is a great hit.

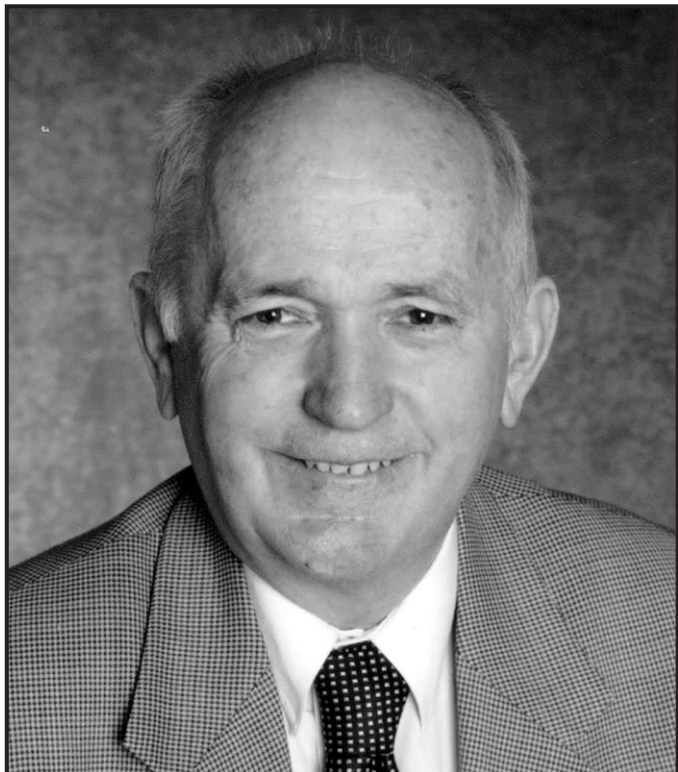
Dana Lawson and Trent Rosewall were each the happy Birthday Club recipients of a \$15 voucher in October. All children in Churchill and surrounding areas under 12 years of age are eligible to join.

IS YOUR CHILD A MEMBER? IF NOT, WHY NOT? Make sure your child is registered - just follow the instructions in the Lions Birthday Club list published each month in the Churchill News. WE NEED MORE MEMBERS.

To all the families in our great community of Churchill and surrounding district, we thank you for your support. Need to contact us? Our address is The Secretary, Lions Club of Churchill and District, PO Box 110, CHURCHILL 3842.



Bob Smith



HIS COMMITMENT TO CHURCHILL, FIRMIN AND THE VALLEY

Bob Smith is committed to a united and progressive Latrobe City Council. He supports a reform agenda for Council.

A new beginning and a fresh choice for Firmin. That's why he is standing for the Firmin Ward and why he is seeking your support.

VOTE 1 BOB SMITH

**FOR FIRMIN AND CHANGE
THE DIRECTION OF LATROBE CITY
ON NOVEMBER 26**

Authorised by Pat Bartholomeusz, 2/3 Nindoo Drive, Morwell

Camp Quality esCarpade 2005

John Barker Publicity, Lions Club of Churchill and District.

The Camp Quality esCarpade is a 6-day fun, outback motoring fundraising adventure that took place from October 15th - 21st 2005.

Heading west and venturing into Outback New South Wales then swinging into northwest Victoria, it encompassed both challenges and rewards and tested wet and dry dirt road motoring skills.

The event is neither a race nor a rally, but that is not to say that we didn't have loads of adventure!

Three of our club members - John Barker, Bob Lowick and Norm Hall - decided to "give it a go".

The Reason

The esCarpade is run to raise money for Camp Quality, a national non-profit charity committed to bringing fun therapy to every child living with cancer, as well as their families through ongoing quality recreational and educational programs. Camp Quality passionately believes in the power of fun in helping children and their families overcome the challenges that cancer and illness bring.

Over 5000 families each year are supported

by Camp Quality. The program is unique and provides a wonderful opportunity for a child with cancer to put their illness aside and just be a child again, enjoying a variety of activities that are fun.

The Lions Club of Churchill has participated in this event for thirteen years and through fundraising and generous donations and sponsorship of our local businesses, organisations and individuals has raised in excess of \$130,000 for the kids.

The Course

The esCarpade route involved loads of dirt with the route running from Bathurst in New South Wales to Ballarat in Victoria, designed to take the long way round through Mildura!

We left Churchill on Thursday 13th October, riding in comfort in Yinnar member Reg Stirling's OKA with the old girl, our HQ entrant, on a trailer hanging on behind. We made the most of this as we all knew what was ahead.

Day 1: The esCarpade did a circuit of Mount Panarama (naturally) then wound it's way north west through gold rush towns skirting Orange and stopping in Parkes for lunch. Then zigzagging our way through the New South Wales wheat/sheep belt over some pretty rough country, arrived at West Wyalong. A total of 473km.

Day 2: The esCarpade continued southwest through regional New South Wales following the Murrumbidgee River into Griffith for lunch. Then off through the vineyards and orchards before turning south. Our overnight stop was at Hay. A total of 542km.

Day 3: Still heading northwest taking in the desolate landscape before a lunch stop at Clare Primary School. Total students = 6, + 4 students from the neighbouring school

140km away = 10 + siblings gave about an even dozen or so. Filled up the kids bags with goodies, filled up the car with go-juice from a tanker (no service stations out there!). Off through Mungo National Park and the bulldust to our overnight stop at Mildura. Dinner was a riverboat cruise on the Murray - very enjoyable. A total of 442km.

Day 4: With over 1600km of dirt and dust behind us, it was time for a 'lay day' with time to clean (and repair) vehicles for the rest of the trip. A couple of school visits and some leisure time were the order of the day.

Day 5: Back on the road and feeling good to be back home in Vic, with a spectacular drive south through the Murray - Sunset National Park. Sand and Mallee scrub were the order of the day, but it rained and rained and rained. Mud, mud, mud everywhere - slipping and sliding and - you guessed it - bogged. No option but down the bitumen to Horsham for a well earned rest. A total 445km.

Day 6: We left the openness of the Mallee behind us and continue into the Grampians, exiting via the extinct Mt Napier volcano. Then via spectacular dirt roads over rolling hills on our way to Hotspur and Cobboboonee State Forests. Then on the bitumen to Warrnambool. A total of 511km.

Day 7: This was the day of the Great Ocean Road, via London Bridge, The Arch, the Twelve Apostles. We peeled off into the Otway National Park for some more dirt road, stopping at Colac before weaving our way into our final destination - Ballarat. All participants congregated at Lake Wendouree before setting off in convoy through the city with lights flashing and sirens screaming.



We peeled off at the end and headed for home. A total of 372km.

The Rewards

The Entrants - In line with Camp Quality's philosophy of fun therapy there was loads of fun and laughter along the way from the start right to the very end - need we say more!

Camp Quality - A preliminary count on day six produced the magnificent sum of \$549,000, all of which goes to Camp Quality to assist with their programs.

There are trophies for the most money, best team, best car, etc., but the overall winners are the kids and their families - and that's the way it should be!

The Car

Your car must be pre-1980 and there is some essential safety equipment that must be fitted including: UHF 40 Channel Radio, rear facing dust amber/yellow lamp, laminated windscreen, seat belts, fire extinguisher and a first aid kit. Also a great idea to have ample tools and spares to save being stranded out in the middle of nowhere. The club entry is a HQ Holden, number 201 in recognition of Lions District 201V3, suitably dressed in all it's finery of sirens, flashing lights, signwriting and stickers. It is often on display at our projects - so stick your head in and say g'day to us.





Housing Week 2005

Glendonald Residents Group Inc
Presents

BMX Event and Community BBQ

SATURDAY NOVEMBER 12, 2005 10 AM - 2 PM

GLENDONALD PARK - PHILLIP PARADE CHURCHILL

Demonstrations by riders from Knox BMX Club

Categories -

Special event for under 5s

5 - 8 years

9 - 13 years

over 13 years

Club riders

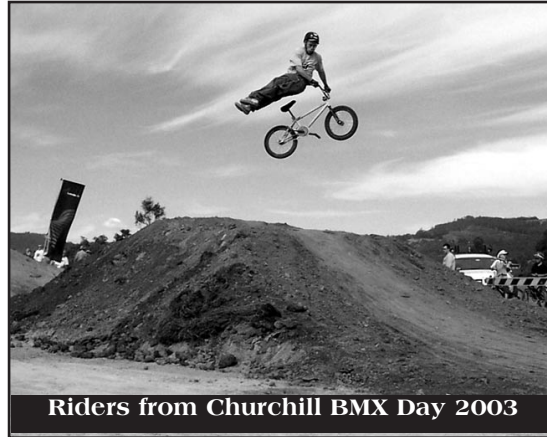
Competitions and Trophies for Local Youth

Enquires to the Secretary,
Phone 5122 1407

Free Sausage Sizzle Drinking Water Supplied

NO HELMET NO RIDE

This event is funded by the Department of Human Services' Housing Week Activities Program



Riders from Churchill BMX Day 2003

--- Youth Yard ---

MYTH - CHAPTER 5: DANGERS AND DELUSIONS BY JAZZMAN

The Atlantean warrior grinned as he held his Plasma Rifle up against Darrowin's face. Darrowin felt the heat of the gun piercing through his flesh and his own sweat dripping down his neck.

The Atlantean placed his finger next to the trigger of his Plasma Rifle, ready to fire at any second.

Darrowin closed his eyes and concentrated carefully. Then, all of a sudden, Darrowin leapt into the air; sword in hand and performed a magnificent spiralling cut straight through the Atlantean's skull. Needless to say, the Atlantean was finished.

Darrowin put his weapon away and looked up quickly. He heard a very unique rumbling sound in the forest, followed by the sound of trees tumbling down.

He couldn't believe his eyes. Three heavy armoured Atlantean War Tanks emerged from the forest. "NO WAY!!!" Darrowin cried and rushed over to Nigel, panting heavily and nearly collapsing after every step.

"Nigel, wake up!" he demanded, shaking Nigel impatiently. But Nigel was still unconscious, and the War Tanks were getting closer to their designated target (being Darrowin).

Darrowin's heart was pounding irregularly fast, and only got worse when the tanks were within a metre of Darrowin and his companion.

The massive vehicles of destruction surrounded him, blocking out the sun as they shrouded him in darkness. "This can't be happening..." Darrowin gasped.

Darrowin closed his eyes, ready to accept his fate.

BANG!!! Just like that, all three tanks fired a barrage of rapid-firing plasma bursts at Darrowin, killing him in the process.

While Darrowin lied motionless on the ground, Nigel was still unconscious and unaware of his surroundings. The Atlanteans climbed out of their tanks and wandered over to Nigel.

"Should we kill it?" one of the Atlanteans asked, poking Nigel with his gun. "No. It could be useful to the master," said another "Let's bring him to the outlander prison in Grazii"

Even though the trip to Grazii took nearly three hours, Nigel managed to remain unconscious until he found himself in a prison cell shortly after arriving.

His first impression of the place was not entirely good. Who would like to fall asleep and find themselves in prison? Nigel didn't seem to. "What the heck am I doing behind bars?!" Nigel wondered (out loud) "Urgh, and why is my head aching?" Without even realising it, Nigel was being watched.

He was being watched by two

green creatures; Raiden and Grengrei. They happened to be sharing a cell with Nigel.

What Nigel also didn't know, was that he'd actually met Raiden and Grengrei once before. Amongst the orc campers back in Radium forest was two rebel orcs, who managed to slip away from Darrowin only to run into some Atlantean troopers.

"So, what are you in here for?" Raiden asked Nigel. Nigel paused, unable to answer for an extensively long time. "Hello, anybody in there?" Raiden continued, but Nigel was still daydreaming. "Just answer me you darn fool!!!"

"I pity the fool..." whispered Grengrei, impersonating 'Mr. T'. Raiden turned around quickly and unleashed his frustration upon Grengrei; "Don't be smart with me, Grengrei!!!"

At this point Grengrei was sweating so heavily that his own sweat was running down from his face and forming a puddle beneath him. "Just leave him alone Raiden" Grengrei said softly, looking down at his feet. Raiden bulked himself up and barked at Grengrei in anger; "ARGGHHH!" "Whose side are you on anyway?!"

Grengrei backed off slowly. Unfortunately for Grengrei, he knew what Raiden was like when he was angry.

To be continued...

Outdoor Activities for Young People



By David Guthrie, President

EVERY Monday after school, from 3.30 - 5pm, our volunteers and parent helpers are conducting games and supervising sporting activities for local children in Glendonald Park. Some thirty to forty children have been turning up each week to enjoy the fun.

The Department for Victorian Communities has funded GRG Inc to conduct a local active healthy recreational program for young people.

A variety of equipment was purchased for the 'Glendonald Park Free Fun Program', including skipping ropes, hula-hoops, phlatt balls and vortex, as well as footballs, soccer balls, basketballs, etc.

A more recent purchase of tennis racquets and balls has proved a popular addition to the range of activities on offer for children to try. Lots of fun has also been had on the basketball court, as children use the chalk provided for drawing and playing hopscotch.

Volunteers prepare a selection of fresh fruit, such as watermelon, oranges, cantaloupe and strawberries, for the children's snacks, while drinking water and cups are on hand for the thirsty.

A number of young people have been asking if we could organise a BMX competition, such as was held in Glendonald Park a couple of years ago. We've decided to hold a community BBQ and BMX Event on Saturday 12 November, as part of Housing Week 2005 activities. There will be demonstration rides from members of Knox BMX Club and competitions for local riders, with trophies awarded to all place-getters.

Housing Week events are funded by the Department for Human Services and are designed to celebrate the positive contri-

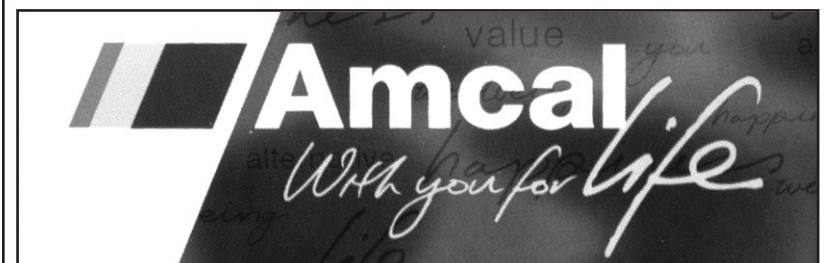
butions public housing tenants make to local communities.

We'll also be holding a free Christmas BBQ in Glendonald Park on Tuesday 15 December, starting at 5pm. Families welcome. We hope Santa will call in too!

We plan to hold a couple of children's school holiday activities in Glendonald Park over the summer school break - ideas and suggestions are most welcome!

At our next General Meeting, to be held in Glendonald Kindergarten at 7 pm on Tuesday 29 November, we'll be making plans for next year's activities. Supper and childcare will be provided. All residents of Glendonald are welcome to attend.

If you'd like to know more about our activities, we can be contacted at PO Box 245, Churchill or by phoning the Secretary, Barbara James, on 5122 1407.



REV LON & VIP
by **POPULAR DEMAND**
CHURCHILL AMCAL PHARMACY
VIP CHRISTMAS EXTRAVAGANZA NIGHT
Thursday November 11th - 6.30pm - 8.30pm
Champagne on Arrival
Any Purchase of \$50.00 = double points.
Introduce a Friend to our Amcal Club and receive triple points*
Door prizes Gifts with Purchases (see details in store)
Great Range of Gifts and Perfumes.
JJ and Staff at Churchill Amcal Pharmacy are looking forward to seeing you!!

Monday - Friday 8.30 am - 6pm Saturday 9am - 1pm Churchill Amcal 5122 1390
*Only One Offer is valid per customer
RSVP

CFA 60th Anniversary Presentation



Awards as follows:-

10 Years Service- Scott Randall and Hamish Burslem: 5 Years service to Lindsay Bevis, Andrew Thompson, Michael Inverarity, Russell Gallagher, and Ruth Place

Scott Randall, Second Lieutenant, presented Encouragement Awards to:-

Brooke Bickley, Steve Shankland and Russell Gallagher.

Third Lieutenant Graeme Renwick presented the Rookie of the Year award to Ben Randall.

Captain Steve Barling presented the Most Consistent Award to Rob Langston, the Captain's Trophy to Slav Golab, and Firefighter of the Year to Scott Randall.

Pumping Efficiency Awards were won by two teams:

1. Steve Shankland, Ben Randall, Shane Renwick and Andrew Thompson.
2. Terry Tilsley, Darren Devlin, Adam Beilby and Mick Inverarity.

A presentation was made to the Football Club of some brigade photos of the old football club-rooms that were burnt down, because all

their memorabilia was lost in the fire. Paul Darby accepted these on behalf of the club.

Brigade Open Day

This followed on Presentation Night on Sunday 16 October. It was held at the station, between 11 am and 3 pm.

Many local brigades came to support the day, bringing their trucks, and volunteers.

The Mobile Communications Van was on display, as was a wonderful display of photos which held many people's attention, and brought forth much reminiscing.

The free BBQ was a draw card, and many local folks took advantage of it while viewing the displays.

Captain Koala and the Smokehouse were great attraction for the children.

After lunch, a display of fire extinguishers and putting out a fire using foam, held the interest of the crowd.

Brigade Open Day: Pictures by Brittany Langston

By RUTH PLACE

On Saturday 15 October the Churchill Fire Brigade celebrated their 60th Anniversary at the annual Presentation Night, at the Churchill Football Club rooms, where we enjoyed pleasant company and a lovely meal.

A good crowd of members from our brigade and other local brigades, as well as significant brigade supporters, retired members, and CFA and other dignitaries, were present.

Firefighter Rob Langston was MC for the night. He read a summary of the brigade's history as compiled by Fourth Lieutenant Ron Bennet.

Peter Schmidt from CFA spoke offering the trustee his congratulations on 60 years of dedicated service to the community. He said that over

the years many significant changes had occurred. CFA is now a highly complex and highly organised operation, with much infrastructure.

He believes the training of volunteers in Occupational Health and Safety issues is vital. He also urged the brigade to become more proactive in training the community, so that it becomes more self-sufficient, and accountable. In the case of bushfires, a brigade truck can be in only one place at a time!

Greg Flynn of CFA then presented Rob Langston with his 25 Year Badge, and First Lieutenant Darlene Parkinson, with the National Medal for 15 years of diligent service to the brigade.

Darlene then presented the Brigade Service



LATROBE CITY COUNCIL ELECTIONS

FIRMIN WARD

HOW TO VOTE IN FIRMIN WARD

- 4** BENNETT, Rasa
- 1** **WHITE, Darrell**
- 5** SMITH, Bob
- 2** WILLIAMS, Howard
- 3** HALL, Peter John

VOTING IS COMPULSORY

For responsible, accessible, experienced and accountable representation



VOTE 1

DARRELL WHITE



40th Anniversary Events

By Margaret Guthrie, President

THIS Saturday the Churchill 40th Anniversary Project will be unveiled to the public at a formal evening event, starting at 7pm, in the Student Union lounge at Monash University.

Pro-Vice Chancellor, Professor Brian Mackenzie, will be amongst the guest speakers, along with a representative from Latrobe City Council. Students from Kurnai College will provide musical entertainment.

CDCA and Latrobe City Council commissioned the Centre for Gippsland Studies to design and produce a series of 6 permanent portable display panels depicting the history of Churchill. The panels will 'tour' sites around the district after their unveiling, before a permanent home is decided upon.

CDCA also funded Churchill Primary School to produce a further set of 6 panels, painted by students, on the same historical topics. These will also be publicly displayed for the first time on Saturday.

An informal preview, from 2 - 3.30pm, will be held earlier the same day in the courtyard of the new Gippsland Education Precinct in Northways Rd, featuring musical performances from some of our local primary school students. Visitors will be able to look inside the Precinct, although not all areas will be open to the public.

The event will also feature a number of historical photographic displays from local organisations, which should be of interest to residents and prompt a few recollections! A souvenir booklet will be available on the day, at no cost.

CDCA would like to thank all those who have given of their time, their memories and their photographs to complete this project, which will be a permanent record of our town's development. Many thanks also to Monash University, Latrobe City Council and the Department

for Human Services for providing the project funding.

Last weekend also saw some 40th anniversary events - the Associated Angling Club's Junior Fishing Competition, which CDCA was proud to support, and the Cooperating Churches' 40th Anniversary reunion.

The Church has been a vital part of our town's community since the earliest days of Churchill's inception and CDCA would like to congratulate all those involved in past and present activities.

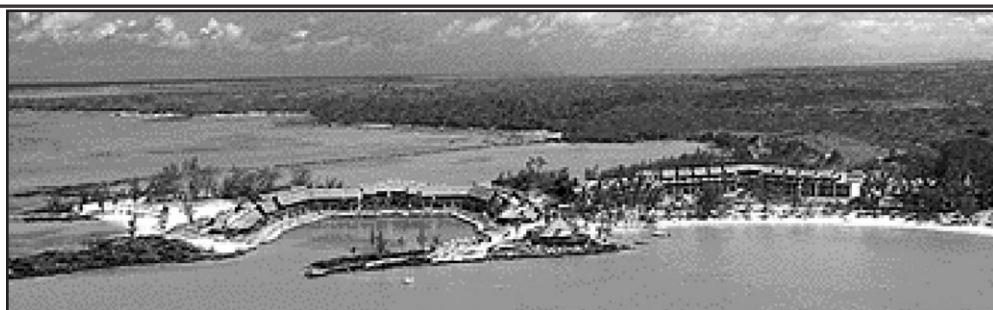
We'd also like to congratulate all those involved with organising the Advent Pageant Parade through Churchill on Friday 25 November.

Fusion, along with our local churches and primary schools, will again be conducting this event, which was a delightful lead-up into Christmas last year, and promises to be quite a wonderful sight again, as students walk through town to find 'no room at the inn'.

To round off our 40th anniversary celebrations, CDCA will be hosting a community Christmas market and celebration on Saturday 3 December in the West Place courtyard at the Churchill shopping centre. There'll be stalls, displays and activities, free entertainment, including songs and Christmas carols from local children, and a sausage sizzle.

Entry will be by a gold coin donation, to kick off community fundraising efforts towards the Churchill Community Hub. To book a stall or participate in the event, contact the Secretary on 5122 3602 or write to us at PO Box 191, Churchill 3842.

CDCA meets on the first Tuesday of the month at 7.30pm in the Link Room at Monash University - next meeting is on December 6. All residents of Churchill and district are welcome.



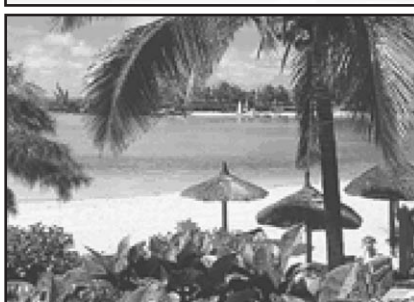
MAURITIUS

Experience the essence of Mauritius, soothe your mind, body and spirit, tantalize your taste buds, rekindle the romance.



213 Commercial Road
Morwell
Telephone: 5134 3388

Licence Number: 32298



BRONZE PACKAGE INCLUDE:

- * Return economy airfare with Air Mauritius
- * 6 Nights superior room accommodation
- * Return airport transfers
- * Breakfast & Dinner daily
- * Free water sports including water skiing
- * Free Yoga & Tai Chi Classes
- * Unlimited access to the Sauna, Hammon, Jacuzzi & Source Garden.
- * Free land sports including tennis and golf driving range.

Taxes Additional

EX Mel: 6 nights from \$2,619 PP

Other Packages Available

Conditions Apply

Gippslander Graeme York New Ceo Hazelwood

By RUTH PLACE

Graeme York was born at Warragul Hospital, lived, and grew up on a farm just outside Drouin. He attended Drouin Primary School, then Drouin High School. From there he went to a Melbourne University where he obtained an Electrical Engineering degree which he passed with distinction.

Graeme joined the SEC, moving to the Latrobe Valley in 1983. There he worked at Yallourn W (which is now Tru Energy), for seven years doing engineering planning. A move to Loy Lang A mine followed. There he worked for three years managing maintenance, with a workforce up to 120 people for the last year.

Graeme then decided to leave the SEC and join Edison Mission- Loy Lang B as a boiler engineer. This experience brought Graeme into a really heavily organised company. It was his task to set up the operating systems and the culture of the power station, a big responsibility. For one year of the time at Loy Lang B, Graeme was Engineering Group Leader.

Within this time Graeme found time to court, marry and have two children.

Then, with Edison Mission, Graeme and family went to live and work in London. His job was Business Development, buying and building the business in Europe.

From there he was off to Chicago for three years, the first two manag-

ing a 2800 megawatt power station. The final year was in Chicago Corporate Headquarters, managing the day to day running of eight power stations.

Australia called and Graeme returned to Loy Lang B for one year doing strategic planning before becoming Plant Manager.

After one year, Edison Mission sold all its international assets outside USA, and bought International Power and Mitsui. Graeme spent eight months with International Power and Mitsui, and is now CEO with International Power at Hazelwood.

Graeme has amassed tremendous experience in engineering, management, understanding business (buying/selling aspects), managing an asset, and in seeing how other people around the world do things.

He describes his overseas assignments as a great experience for his family. He is quick to acknowledge the wonderful support he has received from his family. In fact he feels their experiences of living overseas have brought them closer.

When asked about his future involvement with our local community, Graeme immediately recognised, and gave credit to, the work of Dave Quinn. "Dave Quinn is a hard act to follow," he said.

Graeme wants also to be involved in and support our community, but



needs to balance it with all the other requirements of his job. Graeme says he will bring what he can of himself, to that important aspect of his work.

Since becoming CEO, Graeme says that he knew he would have to hit the ground running, but didn't realise how fast he would have to run. This is a busy time at the power station with many approvals still to be settled by legislation and signed, and with budgets to complete.

How did the signing of the deed for which Dave Quinn had worked so hard feel?

Graeme says that that signing felt very strange!

So now it is down to business as usual. Graeme's aim is to continually improve the business, working with the people and using their ideas. Revenue is down due to electricity pricing, so the mine needs to keep developing.

With his local background, understanding and appreciation of local issues combined with knowledge gained overseas, Graeme will be an asset to Hazelwood.

CHURCHILL

ACCOUNTANT

TONY ANTONELLI

NTAA

National Tax Accountants

Income Tax Returns (Fee From Refund)

Financial Advice

GST Assistance

MYOB QUICKBOOKS QUICKEN

OR MANUAL

5122 2058

pba@vic.australis.com.au

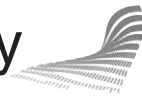
PONDAGE PURSUIT

Proudly Presents

SUNDAY NOVEMBER 20TH, 2005

First Prize \$1000 cash

Run in conjunction with the "Getting Involved" day for the Commonwealth Games and the Latrobe Yacht Club Open Day and fully supported by



Latrobe City
a new energy



International Power
Hazelwood

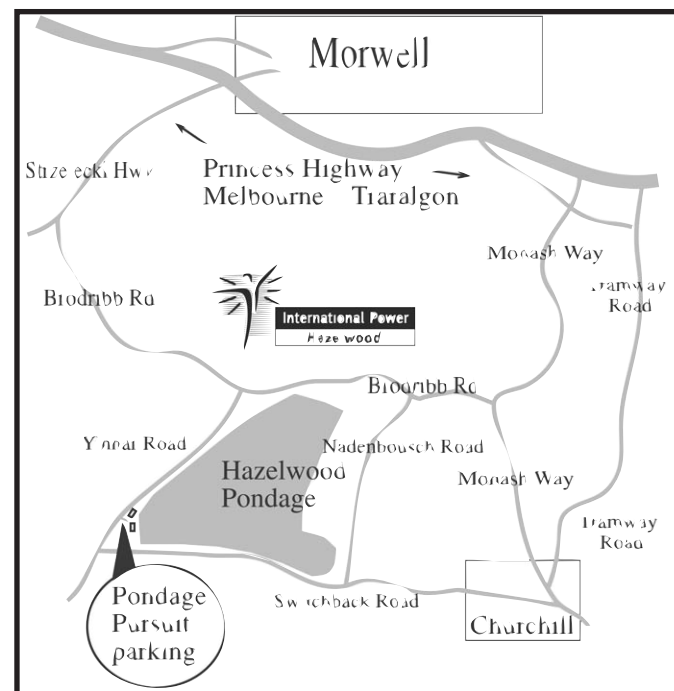
- **Teams** are accepted from 10am onwards through to 2 pm.
- **Parking** at the Aquatic Centre off Yinnar Road at the Hazelwood Pondage. Free bus to start point.
- **Much** more than a Trivia competition.
- **Participate** in games while exploring in 3.2km waters-edge course along the western side of Hazelwood Pondage.
- **Enjoy** a sausage sizzle, a variety of community stalls, free musical entertainment.
- **Yacht** rides as part of Latrobe Valley Yacht Club Open Day.
- **Entrance** fee will be \$20.00 per team which includes 1 to 4 adults and kids 13 years and over.
- **Extra** team members 13 and over will cost a further \$5 per person
- **Children** 12 and under are free.

Proceeds donated to the



This is an alcohol free event

Register prior to the event through www.cdnews.com.au or simply turn up on the day and be part of a great community occasion





Looking Back...

...through the eyes of local residents



The History of Churchill and District News

By Ruth PLACE

Part 2

Sharon Gibson and Bob Hodson

Sharon Gibson (nee Foster) was the Advertising Co-ordinator (ACO) and book-keeper, in the time that Bob Hodson was Editor. Bob took over from Rev John Gale and Sally Hooper was Editor after Bob resigned due to ill health.

The old story again applied - not enough money from advertisements- therefore a smaller paper.

Sharon describes the advertisers she dealt with as great. She would set aside a full day to visit them, spending happy times chatting with them as well as finalising the advertisements. "It was a joy to do," Sharon enthuses. Extra advertisers from the regulars were added to her list, and soon debts were paid off. Sharon has fond memories of working with Churchill News and the Churchill community. They displayed a terrific community spirit which was rare in other Latrobe Valley towns. Sharon particularly remembers the wonderful ladies of the Church who helped compile the paper, describing them as one big family. Sharon was paid \$35 per week, which had to cover petrol, phone and other expenses. The paper continued to be produced fortnightly. Advertisements were composed using many resources - computer, magazine pictures, sticky tape, blu tack and "kindy skills" of cut and paste. Sharon paints a very happy picture, but when questioned, agreed that there were frustrating times as well. Sharon cared about the paper and our wonderful community. Among her memories of Bob Hodson is a very precious memory of Bob and wife Elaine taking a great amount of care to have a wonderful photo and story of Sharon and Glen's wedding put in the Churchill News. "It was a thrill to see it. I was tickled pink, especially when I realised how much effort they had gone to," she said.

Sharon describes Bob as a man with a heart of gold and a passion for the paper. It was the Herald - Sun to him, he cared about it and it was not just a job. Many times Elaine and children, Ben and Tim, would spend hours at the Church while Bob worked on the paper, sometimes with Elaine's help. If Bob chased a story, the family would tag along. Bob also was paid, although it wasn't much. The Church supplied all the other materials and equipment. Sharon says there was a lot of rushing around and frantic effort, excitement and exhaustion at the end, but "it was nice to put the paper to bed". When Glen and Sharon went to Mt Baw Baw to manage a lodge, Sharon had to finish her involvement with the paper.

Tom Lawless, when he was on Council, put in a regular report. He says he often got effective feedback from doing this.

Sally Hooper.

In 1990, after Bob Hodson resigned, young Sally Hooper took over as Editor. She was just sixteen, and doing Year 11. With much help from Mum and Dad - Bev who has a long history with the paper, and Martin, Sally filled the job well, continuing the fortnightly production. The columns were typed up on the old computer at the church. The paper was assembled. David Lyne, Roger Marriot, Joyce Belford, Bev and Martin, also continued to help with the layout. Greg Strack was the minister at the time, and it was his role to deliver the hard copy to the Express for printing.

Rev. Greg Strack arranged for the purchase of a computer through Morwell Shire Council. It was in this time that Greg Simmons, a Graphic Designer, from the CELTS department at Monash, designed the then new banner for the paper of the sun rising over a hill.

Robyn Mauger / Jan Fisher

Just before April 1991, Rev Greg Strack asked Robyn if she would be the Advertising Co-Ordinator with Jan Fisher the Editor. At that stage Robyn had limited computer skills; in fact she had no desire to be computer literate. After considering the proposal and with husband Garry's offered support, Robyn took on the job. She spent time learning the programs of Bannermania, VP Graphics, Wordperfect 51 and Lotus 123 Ami Pro. The first 2 programs were "beautiful, simple programs - inspirational and exciting", supplying many different options in fonts, styles and pictures. Thus the Churchill News advertisements were introduced to the computing age. There were also graphics in books, but they were hard to come by.

To start with, Robyn would ask a new business advertiser for their business card or letterhead. These were photocopied to correct size and then the extra pieces were cut and pasted onto the page to complete the advertisement. Sometimes the quality of the original material was lost in photocopying and enlarging, so Robyn would touch it up with pencil and fine black pen. She often said she was not happy with the result, but there were moments of joy and satisfaction. When the paper came out and it looked as good as she'd hoped it was very satisfying. Getting advertisements in the first place was a lot of hard work as Robin's predecessors had found. She would ring to book a time to discuss an advertisement, and on arrival the person often wasn't there. This resulted in lots of running around and telephoning. Once an advertisement was taken, Robyn would design it, then return to the advertiser to see if it was okay. If it was it was great, but if not it meant another trip. Chasing up the money that was owed was a mixed bag, with good payers and those who needed prompting. The number of advertisers increased, which meant that a regular 12 page issue was assured, with the occasional 20 page special issue for times like Easter and Christmas. A progressive payment system was introduced to pay off debts if needed.

Robyn and Garry feel that those who advertised saw it as a two - way promotion of the Community and their business. At this stage 2500 papers were produced, but still hand delivered. Jan had David Lyne, Bev Hooper and Roger Marriot to do the page composing and Robyn gave the advertisements to these people. The cut and paste method was still used. The deadline for delivery was 8am Tuesday at the Express office. There were many frantic weekends spent finishing the advertisements on time, but Robyn says she got to know the community. Robyn recalls that there were special advertisement border tapes which could be purchased, with particular ones for Christmas and Easter. These were expensive so they were used with care.

By the time Robyn finished as Advertising Co-Ordinator in June 1993, the paper was \$12,000 in the black. This allowed the final payment of \$8,000 owing on the church loan to be paid off, and a new computer purchased. The spouting on the Manse was also replaced. Jan Fisher then took over as Editor/Advertising Co-Ordinator/Bookkeeper. Robyn remembers Jan as a very good Editor - very exacting. She liked to be spot on with grammar, punctuation and spelling, making the type quality very high. During that time, there were many regular article submissions, eg Roger Marriot's 'Let's Talk Gardening' segment. In order to fill the paper a lot of effort was needed to make sure articles came in.

Rev. Peter Harradance, wrote an Australian Native article while

minister, and before retiring of ill health.

Garry remembers taking a group of Scouts to see Showtime. With some time to spare they visited the Reference Section of the Library to see the back copies of Churchill News. The kids were stunned to see Mum and Dad,

Margaret Vitlin

Margaret Vitlin served as advertising lady from the time she answered an advertisement in the Churchill News, put there by Jan Fisher. Jan had been doing the whole job alone. Margaret saw the advert. As she had worked for a student newspaper in New South Wales, doing the advertisements, she felt she had the experience needed. Jan agreed and 'hired' her.

Margaret remembers her time as advertising lady, as a generally happy time, although there were frustrating times trying to balance the amount of advertising to break even. Sometimes there was a profit! However, in those times when insufficient funds were amassed, Margaret says she could count on the Ollquists, whom she describes as 'the shining lights', and Bob Smith at the Hardware, who was also supportive over a long period of time. She recalls going into Bob's and him asking her to ring ABC Radio, and go in for the Quiz. He acted as her brains trust. Bob is famous for winning on such programs!

Serving in the remainder of Jan Fisher's time, gave Margaret a chance to get to know Jan. She says she got on well with her. Jan liked everything in on the deadlines. Next she served with David Shields.

Particular advertisers also remembered by Margaret, are Keith Hamilton, Leisure Centre, Crusade Centre, Chris at Churchill Hot Bread. Chats with the Churchill Newsagency folks were enjoyed. Debbie at the Fish and Chip shop would make Margaret a cuppa while she waited for Nick to return. Sadly remembered is Ann Taylor at the Nursery, whom Margaret describes as a lovely lady.

There were stressful times trying to get ads in and finished on time to meet those deadlines!

Margaret enjoyed her time; she still has a soft spot in her heart for Churchill News.

A copy of Churchill News was always sent to the State Library.

In 1998, David Shields, age 21 years, took up the editorial reins for twelve months, having answered an advert in the Express. He says he continued the well-trying routine, using the computer at the church to type up the articles. He described the church as a quiet, perfect venue in which to work. He would type up the articles in the afternoon, and then his friends, 5-6 of them, would turn up to help with the layout. Bev Hooper was among them. Bev says "helping with the layout reminded me of the paper being a jig-saw puzzle to be put together".

This was during the time of Rev. Tony Peters, whom David describes as a really good help. He was not greatly involved with the paper, but was supportive and always helped out when needed.

David recalls that in this time, Barry Whitehead was writing 'As I See It'. A lot of people read Churchill News because of this inclusion, he states. Another popular 'read' was Scott Guerin's footy articles. Guys read Churchill News because of it.

David says the articles were not serious, just very funny.

David wrote the occasional cricket report. He also introduced the idea of the University Journalism students putting in articles about university life. One of those students was Martine Sheppard (known as Marti) who became co-editor the following year.

SPOT THE PLAYER!

SECRETARY - CHURCHILL FOOTBALL CLUB - P.O. BOX 111 CHURCHILL.



Easily the best player in the Churchill Team, he can kick sixty yards with either foot and is a superb over head mark. He also enjoys kicking goals.

Churchill News 1st April 1982



CHURCHILL NEWS

Produced by
THE CO-OPERATING CHURCHES IN CHURCHILL
FOR THE COMMUNITY

Registered for posting as a
Publication Category 'A'

August 6th, 1981

Distributed free
Posted \$3 per year

NEWS FROM Shire Council

By Cr. Ollquist.

COAL - OIL:
Construction of a coal to oil pilot plant is due to start in November on a site at the corner of Tramway Road and Porters Rd., This is a corner of the old Gas & Fuel allotment.
Advertisements appeared last week in the Express giving notice of the proposed...

Dental Fear?

Are you more afraid of dental treatment than the average person? If so there is a program designed to help you.
Entry to this program is available to those in need of dental treatment and whose motive for avoiding it is fear of dental treatment (a condition that

Council Election

Churchill is fortunate to have two candidates standing at the coming shire election. Being a councillor is a pretty thankless task and a lot of hard work and so it is no surprise that in times past the role of councillor has gone uncontested. On August 8, Cr Ross Ollquist is defending

Test Your Bones Today for a Strong Tomorrow

BONE density testing and osteoporosis education program to help women and men assess their risk of bone fracture and prevent osteoporosis will be at Churchill Amcal Pharmacy on Thursday 24th November only.

"Ultrasound bone density testing assists in assessing risk of bone fracture," says medical adviser to Australian Bone Density Testing Centre Dr Max Holsman. "An article published in the Australasian Journal of Bone & Joint Medicine (Volume 2 Issue 1 2003) states that ultrasound bone testing provides reliable estimates of fracture risk,

particularly for fracture risk at the hip."

Osteoporosis or thinning of the bones affects 1 in 3 Australian women. "Bone loss can begin slowly from age 35 and women can lose up to 20% of their bone mass after menopause, however this need not happen as osteoporosis is largely preventable and treatable," says Dr Holsman.

Men are also at risk as factors such as lack of exercise, inadequate calcium, smoking, excessive alcohol intake, steroid usage and decreased testosterone levels can reduce bone mass and lead to fractures.

Established in 1995, Australian Bone Density Testing Centre provides regular testing throughout Victoria. Tests are conducted by the Centre's nurse, cost just \$45 and results are available immediately. Each person tested receives a 40 page booklet to help you keep your bones strong and healthy.

Testing is recommended for women 40 and over, men 50 plus and anyone over 20 who is concerned about their bones. Book your test at Churchill Amcal Pharmacy phone 51221390 (For further information see www.bonedensitytesting.com.au)



Alan Langmaid, Nan Butcher, Chris McSwiney, Gladys Morris

Happy Birthday Churchill Wattle Club

THE Wattle Club is an Adult Day Activity Support Service program run through the Latrobe Community Health Service.

You will hear the participants saying "I am going to ADASS". It is not a running shoe shop, but the section under the Town hall where, for the last 21 years the members have met and enjoyed the activities and the company the club provides for our senior community members.

The Wattle Club celebrated the milestone (they remember miles better than kilometres) with a hat party, and the unveiling of the magnificent

mural in which they all had a hand.

About 35 members, with the faithful volunteers, staff and representatives from the LCHS, enjoyed the hat party, which featured games and a slide show of the club's history. A beautifully decorated cake was cut and shared.

I asked four of the happy group what they liked about Wattle Club and immediately they called out 'company, companionship, activities, cards, games like Rummikub, and the outings'.

Over this year they have had memorable trips to places like

Paynesville for a boat ride. They assured me they didn't get seasick.

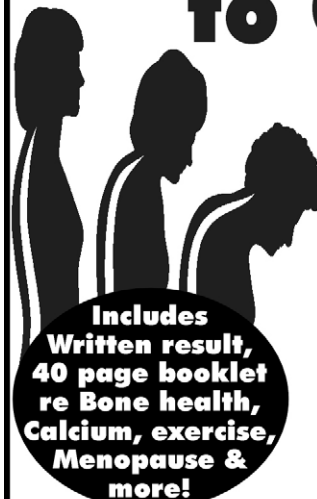
The weather was perfect! Another occasion they went to Port Albert and had fish and chips, feeding some to the seagulls.

Next week it's off to Inverloch, and you guessed it, for fish and chips.

Recently the members were treated to a wonderful time of musical entertainment, with Paddy O'Dowd. Paddy involved the folks, who said they had an hilarious time.

Osteoporosis Information

Bone Density Testing coming to Churchill



Includes Written result, 40 page booklet re Bone health, Calcium, exercise, Menopause & more!

Find out if you are at risk of developing osteoporosis!

Osteoporosis means that your bones become thin, fragile & may break easily.

Assess your risk with an Ultrasound Bone Density Test. Costs just \$45. The sooner you assess your fracture risk the more time & information you will have to prevent osteoporosis.

Testing Thursday 24th November at: Churchill Amcal Pharmacy Hazelwood Village Ph 5122 1390

Brought to you by Australian Bone Density Testing Centre Est. 1995 Ph 1800 640 544 www.bonedensitytesting.com.au Committed to keeping bones healthy & preventing osteoporosis

Morwell RSL Sub Branch Inc.



BISTRO
OPEN 7 DAYS
LUNCH & DINNER

All functions catered for
Rooms Available for:
Meetings, Conferences, & Seminars

Entertainment for November

Friday 11th November
Saturday 12th November
Wednesday 16th November
(Anzac Room)
Friday 18th November
Friday 25th November
Saturday 26th November

Crash the Party
Misty
\$5 Rock with Rick Charles & D. J. Deno. (\$5 Cover Charge)
Esquires
Stoneage
Coolchange

Telephone: 5134 2455

"Crash the Party" New Years Eve. - Book your table at Reception. If reserved tables are still vacant at 9.30pm they will be given away. Morwell RSL members (affiliate, social, ordinary) FREE entry, must show members card on night. \$10.00 for Non-members. Nibbles on tables. Patrons cannot bring their own food onto the premises.

Churchill Neighbourhood Watch LTB 22 Graffiti

Graffiti destroys property, is a crime, a form of vandalism, anti-social and a cost to the community, individuals and businesses.

How can we describe graffiti?

Graffiti is the marking or delineation of another person's property with an identifying symbol or graphic representation without their consent. It is illegal. The methods used include but are not limited to: spraying, writing, scratching, slashing, burning pasting material.

Different types of graffiti

Forms of graffiti include political graffiti. This is where there is an explicit political message of some kind.

There is another form of graffiti known as Graffiti Art. It is a skilled activity with a strong aesthetic and artistic dimension. The artists are skilled and are using this particular form of artwork to display a particular contemporary style. The works are not often done on public places and when they are done; the artwork is legal, with the permission of the owners of the properties. This, society can consider as legitimate artwork. It is

a lawful contemporary form of art and style, which has been brought about because of the influence of graffiti artists, and modern culture. This form of artwork has a legitimate place within society and the commercial world.

Tagging graffiti is probably more prolific than any other form of graffiti. It is where individuals or groups will use a particular tag which may be a signature or some other process which delineates the particular signature and identity of the graffitist. A tag may take as little as three seconds to draw and individuals may put up hundreds of tags in one day.

In the coming months the residents will see more neighbourhood Watch signs in the community.

All residents are welcome to join us at 7.30pm on Thursday 17 November at the Neighbourhood Centre for the next meeting, where Peter Gray will be giving a talk concerning security around the home including modern security systems which are available.

Churchill Advent Pageant

Friday November 25th
West Place, Churchill

From approx 10.15am-11.30am

- ★ See the re-enactment of the Christmas Story, with local school children as the stars, participating with songs and drama.
- ★ A community celebration with the schools taking centre stage.
- ★ Last year's Advent Pageant was a great success, with many community members experiencing the true joy and spirit of Christmas
- ★ Everyone is invited to come and support our local children, and hear the special message of Christmas.
- ★ This event is supported by our local community businesses, and organisations like Lions and Rotary.
- ★ It is initiated and co-ordinated by Fusion, the local churches and schools.

Another day to remember in our 40th Year of Celebration



Election Special

Darrell White

Can you tell us a little about your background - employment, community involvement etc.

I have been a Churchill and Hazelwood resident for over thirty eight years. I am married to Diane and we have three children plus our daughter-in-law and our son-in-law together with five grandchildren. I am currently employed as a Disability Employment Consultant with Interact Jobplus. Previously, I was Manager of the Morwell Community Health Centre for more than fifteen years. Prior to this I had been the Personnel Manager at the Morwell factory of L M Ericsson Pty Ltd.

I have been extensively involved in the community for many years having been a past member of the Churchill Primary School Council and past Treasurer of the Morwell Technical School Council. I am Past President and Life Member of the Churchill Tennis Club and Past President and Life Member of the Churchill Football Netball Club.

My current involvements include:

Member of the Glendonald Park Advisory Committee

Member of the Mathison Park Advisory Committee

Chairperson, Latrobe City Tourism Advisory Board

Member of the Latrobe City Safe Communities Advisory Committee

Member of the Latrobe Regional Gallery Advisory Committee

Chairman of the Gippsland Sports Academy Director of Gippsland Group Training Ltd.

Director of the Morwell Bowling Club Recreation Centre.

What are your thoughts on the Churchill Intergenerational Community Hub and the axing of the hard rubbish collection?

I fully support the thrust and vision of the planned Churchill Intergenerational Community Hub. It will create the opportunity to further strengthen the cohesiveness between all residents of Churchill and District as they take advantage of the many services and activities that are intended to be delivered through the Hub. The Hub will embrace

state-of-the-art design and fittings, and, because of the intended central location, it will cater for all sectors of the community, from the young to the elderly, who will be able to, at a single site, have many of their individual needs met.

I have received a number of queries regarding when the next hard rubbish collection will be for residents. This is a matter that has received much consideration by Councillors' and the Council's Management Team to find a practical solution. Residents will be aware that the existing hard rubbish collection program has been "on hold" due to significant WorkCover issues. The Council has been exploring options to ascertain a suitable alternative way of managing this matter.

Clearly, a hard rubbish service is being requested by residents, and I will continue to press for the identification of a practical solution to enable re-introduction of a suitable service.

What other issues do you see as important to Firmin ward and how should they be addressed?

Other Firmin Ward issues that I will pursue include:

A very important issue, as identified in the Council's Plan 2005 - 2009, is the development of a Structure Plan for the Churchill Township,

which aims to increase the level of building activity within the town and further improve the town's sustainability and livability. This work will need to be undertaken by Council with a strong emphasis on consultation between the residents and the Council to ensure that the Plan adopted is in accordance with community aspirations.

Support for the policy directions of Churchill District Community Association will continue to be very important, including the continuing development of both Mathison Park and in Glendonald Park.

The establishment of a Civic Gardens Venue near the town's Symbol in the Town Centre is a priority. An on-going joint approach between Council and the Churchill District Community Association, on behalf of residents, will provide the framework for the achievement of a very good outcome for the community.

Continuing advocacy for the retention and maintenance of Council's asset infrastructure in Churchill and district, including recreation facilities, is vital.

A recent example in this regard was my advocacy on behalf of residents, to ensure that the Churchill Leisure Centre Swimming Pool had sufficient Council support for appropriate funds to be allocated to enable refurbishment and subsequent re-opening of the Pool to meet the needs



of Churchill and district residents.

Maintenance of the town's footpaths, walking tracks, local roads and neighbourhood parks remain an on-going key focus for the Council. It will be my firm intention to monitor and represent the best interests of residents on a continuing basis to ensure community expectations are addressed.

The continued growth and development of the Monash University Gippsland Campus and the Gippsland Education Precinct are key elements that will have a significant impact on Churchill's future development. It will be very important for the Council to be supportive of both these organizations to further build on their significant achievements to date.



Can you tell us a little about your background - employment, community involvement etc.

Born in Melbourne, raised in Geelong - hence a lifetime Geelong AFL supporter. Lived in Morwell since 1971. Married to Rosemary, one adult son, Gareth. I taught at Morwell HS, Maryvale HS and the 4 campuses of Kurnai College as well as in Taizhou, China with the Latrobe City sister city exchange. I have held leadership positions in preschool, primary and secondary school councils as well as local football, local and Victorian volleyball and community groups. I have a broad network of contacts within the Latrobe Valley community through participation in a variety of forums. A teacher unionist since my training, I'm an Australian Education Union

What are your thoughts on the Churchill Intergenerational Community Hub and the axing of the hard rubbish collection?

I was present at the initial meeting held at the Churchill Neighbourhood Centre that discussed the concept of a multi use community facility for the town. Through community consultation this idea has developed into what is now known as the Intergenerational Community Hub. The Hub has the potential to not only provide a new 'home' for some essential community services such as child care and the community learning centre but develop extra synergies through partnerships amongst the groups using the facility. The Hub should also be used to bring services closer to the local community.

As a Latrobe City resident I also miss

delegate to Gippsland Trades and Labour Council. I have extensive experience in staff selection, promotion panels and strategic planning. I currently serve as treasurer of the Baw Baw - Latrobe Local Learning and Employment Network, which seeks to improve pathways from school to work for young people, secretary Latrobe Valley Volleyball and a Board member of the Gippsland Sports Academy.

the hard rubbish collection service that was very well used and not easily replaced by the elderly and those without cars and trailers. I will work to see what can be done to overcome the difficulties that led to the suspension of the hard rubbish collection.

What other issues do you see as important to Firmin ward and how should they be addressed?

As a councillor I would ensure consultation with the community, responsible financial management and abide by the good governance protocols. In keeping with my position on consultation I am seeking feedback on the community's priorities in an effort to reflect these. Aside from the issues you have already asked about in Latrobe Valley we need jobs, our families deserve a future and Morwell and Churchill can share in that future. That's why I will work for balanced economic development; to improve health, Council and community services in Churchill; public transport and the major road links between Churchill, Morwell and Traralgon.

The new education Precinct at Churchill provides another opportunity for Latrobe to promote the area as somewhere that is innovative and we need to capitalise on this for the benefit of the whole community. I would seek to consult widely on issues but also recognise the need for council to be decisive and continue to promote Latrobe as a great place to live, work and do business.

Howard Williams

Rasa Bennett

Can you tell us a little about your background - employment, community involvement etc.

I am married to John and we have four adult children. I have farmed in the Yinnar and Hazelwood area since 1969. Over the past 30 years I have served on many local committees including kindergarten, school, housing Co-op, Gippsland Water Customer Consultative Committee, Hazelwood Power Environmental Committee and currently the board of the West Gippsland Catchment Management Authority.

My interest and passions are family, the environment and governance.

What are your thoughts on the Churchill Intergenerational Community Hub and the axing of the hard rubbish collection?

Intergenerational hub - great concept but it will require good planning, communication between many groups and adequate funding.

Garbage - I read that the council was advised that the 'manual handling' of the hard waste was an issue for council workers. I think we need to think creatively for alternatives if this is so.

Perhaps two free "recycle depot" visits per household per year? Perhaps a service group would be able to help those unable to visit the 'recycle depot'?

What other issues do you see as important to Firmin ward and how should they be addressed?

Public Toilets are still an issue - they are needed near the shop. They will need maintenance and upkeep and disabled persons access.

Access in Churchill to a library outside of school hours is of concern to some people.

General Beautification of Churchill and especially of roads needed.

I support change - a fresh start for our next council. Please fill in your preferences carefully.

Election Special

Peter Hall

Can you tell us a little about your background - employment, community involvement etc.

I came originally from Adelaide, lived for a short time in Cairns, and then came to the Latrobe Valley. I live now in Morwell with my wife Mel and our 1 year old daughter Bridget.

At the moment I work for the AEU (Australian Education Union) as the regional Secretary. In this role I service education workers throughout Gippsland and do what I can to resist changes to industrial laws. However, I have worked hard in unions and the Labor party for a number of years.

My first full time job was for Australia Post as a Postman. It was in this role that I first saw the opportunity to use what I was taught as a kid growing up in Adelaide; that is to stand up for your fellow workers and people you live with when you see something unfair. I grew up in Morphett Vale which is a Housing Trust suburb in the south of Adelaide; much like the Housing Commission areas in Morwell and Churchill. Therefore I understand a lot of the challenges and missed opportunities facing those growing up and living in these areas.

In the local area I have being heavily involved with the Student Union. Students are an important part of Churchill and district; and we cannot afford to lose our Student Union. My daughter goes to Pooh Corner, the childcare centre run by the Student Union. Therefore as a Student, Parent, and resident I value the Student Union.

In addition to this I have also been actively involved with the local ALP (Australian Labor Party) for a number of years. I believe that my

experience in the party especially regarding social justice and industrial relations will hold me in good stead. Whilst the ALP does not endorse those running in Local Council elections I am proud to declare my political colours. I am proud of the achievements of the Bracks Labor Government and proud of what the Bracks Government has delivered for the Latrobe Valley.

What are your thoughts on the Churchill Intergenerational Community Hub and the axing of the hard rubbish collection?

I believe the Intergenerational Hub is a fantastic opportunity to pull together all the resources in Churchill. Rather than trying to spread facilities thinly across Churchill, the Hub will give us all a chance to make Churchill better to live in. Many communities across Australia are setting up facilities, such as the Hub, where residents can come to the one place and access everything from childcare to a neighborhood house. The individuals representing the groups involved- such as the Student Union, Churchill District Community Association, and Neighborhood House should be commended for their hard work. However I don't think we should stop with the Hub. Many facilities in Churchill need a face lift, if they can't be brought into the hub project.

Hard Rubbish Collection is a vital service to residents that should be kept. Not only as an effective means of removing rubbish, but as a way of making properties look better and therefore having residents feel better about their towns. Also Hard Rubbish collection is a fairer

system for those who may not be able to get access to a car, a ute or a trailer, and then get to the tip. Senior Citizens, Pensioners, or those on lower wages will be affected most by scrapping Hard Rubbish collection. I believe the question should be what has Bob Smith and Darrell White done as Councilors to maintain Hard Rubbish collection?

What other issues do you see as important to Firmin ward and how should they be addressed?

Representatives on council for Firmin should actually represent Firmin. Latrobe City residents have put up with too many representatives for far too long serving their own agendas instead of looking after residents. Proof of this is Bob Smith leaving his ward to run for Firmin. What ever reason he has done this for is irrelevant. What does matter is that we all, as residents, deserve more from the people we elect. My commitment to residents is to work for them not against them.

Getting from Churchill to other towns and getting from other towns to Churchill, by Public Transport, must be a priority. We have a large number of Uni students, Pensioners, Senior Citizens and people on lower wages. Getting around the Valley for shopping or work should not be difficult or a hassle. Transport should be more accessible and suited to where we live. Not everyone has a car and those who do are finding it harder to fill the tank, with the increasing pump price, putting another strain on the household budget, and making it that much harder for peo-



ple in our area.

Rate payers should see the value of their rate dollar. It is disappointing for residents to see potholes left un-fixed, parks left un-mowed, or public spaces not utilised to their potential. Also it is not good enough to abandon parks and public areas because council cannot be bothered to maintain them. We should advance and cherish what we have in Churchill not leave it go to ruin even though we are paying for it.

If elected I promise to be accessible to residents and work in with the projects that the community find valuable. My motives are simple; I go to Uni in Churchill, my wife works in Churchill, and my daughter goes to childcare in Churchill- I have a commitment to Churchill.



Can you tell us a little about your background - employment, community involvement etc.

I was born in New Zealand, but moved to Australia in the mid-60s on a 'brief working holiday'. I was called up for National Service in 1968 and spent most of 1969 on active service with the 9th Battalion, Royal Australian Regiment in South Vietnam. In 1972 I moved to Budgeree, where I still reside. I have a close affinity with Churchill, having managed Churchill Hardware for more than twenty years, and I am still working in Churchill on a daily basis in the finance services industry.

I have always been very involved with community affairs at Budgeree and since being elected as councilor for Gunyah Ward I have been associated with the various progress associations/community groups in Boolarra, Yinnar, Yinnar South and Traralgon South. In addition, I have served on various committees of Council, including the Mathison Park Committee, the Timber Towns Victoria Committee, the

International Relations Committee, the VFF/Latrobe City Working Group and I chair the Loy Yang Power environmental review committee. I am a member of the Morwell branch of the RSL and a passionate follower of St Kilda Football Club.

It is with some regret that I have made the decision to leave Gunyah Ward and contest Firmin, but I believe my move affords the best possible chance of achieving the real change which is required on Latrobe Council. The residents of Gunyah will be very well served by the incoming ward councilor, Doug Caufield. I have arranged to meet with Doug, and will be briefing him thoroughly on all the relevant issues in his new area of responsibility.

What are your thoughts on the Churchill Intergenerational Community Hub and the axing of the hard rubbish collection?

The Churchill Intergenerational Hub has the potential to be a facility which would be the envy of many towns. But the first sod has yet to be turned on the site and I think the planning process still has issues to resolve. One possible bone of contention is the actual management of the Hub. Latrobe City staff will be involved of course, but there will be outside service providers, and the issue of just who is responsible for what certainly needs some definition.

The actual allocation of floor space within the Hub also needs fine tuning. At the recent public meeting called to discuss the Hub, the point was made that the proposed lay out of the Hub seems to dedicate perhaps a disproportionate area to

childcare, so certainly this will need to be looked at.

Also, I believe every effort should be made to involve the smaller local communities such as Boolarra, Yinnar, Yinnar South, Hazelwood North etc. These communities will undoubtedly use the Hub and share its resources and they deserve to be part of the consultation and planning process.

But overall, at this stage, I give the proposal a huge tick. It is exciting, it will give Churchill a fantastic boost. It will provide the town with what it has always lacked, a genuine focal point. Let us hope that there will be sufficient funding, whether from State, Federal or local government sources to ensure that the Hub is a reality sooner rather than later.

The discontinuance of hard rubbish collection in the City was a difficult decision for all councilors to take. It was largely driven by advice received by the Council from WorkSafe Victoria, which suggested that the Occupational Health and Safety issues involved in manual handling of heavy items were such that the service could not be continued.

It is interesting to note that while Latrobe City discontinued hard waste collection, many councils in the metropolitan area, which one would expect to follow suit have not done so and still offer the service. I think the way forward for Latrobe is that there needs to be some serious investigation into how the supposed WorkSafe issues are being handled by these other Councils and whether their experience shows that Latrobe could consider the re-introduction of the service. In the interim, perhaps there could be a voucher system introduced, whereby residents could drop hard waste at the transfer stations at no charge once or twice a year. Some form of action must be taken or the increasing problem of illegal dumping of rubbish in forested areas of the City will only get worse.

What other issues do you see as important to

Bob Smith

Firmin ward and how should they be addressed?

At the risk of sounding Churchill-centric, as I am well aware that there is much more to Firmin Ward than the one town, I think that the position with the lack of public toilets in the township is just not acceptable. I understand that the concept of a 'civic square' for Churchill embraces the provision of public toilets to be provided in the former Churchill Nursery Building. There are, however issues with the transfers of land title and this must not be allowed to drag on for too long.

The Monash Way approach to Churchill, particularly the Morwell end, is extremely unattractive: Briquette works, char plant, re-cycling centre etc. Yet this road is traveled by thousands of visitors to the region, from intra state, interstate and overseas due to the presence of Monash University. The first impression created must be horrendous and a way must be found to beautify the area.

Native vegetation and the State government imposed regulations concerning the removal of it are an issue of concern to many landholders and impact upon Firmin Ward as they do across all of the city. I think that, at all times, a commonsense attitude must prevail. Too much restriction could make farming, if not unviable, certainly much more difficult to carry out efficiently and Council has a role to play in its representation to the State government on just this type of issue.

Other broader issues such as unemployment, our changing demographic, or youth issues also have an impact across the length and breath of the city. These are all areas which will need every Councilors full attention.

Attention which is no longer diverted by political divides, or diminished by pre-arranged voting intentions. I plan to be part of a Council which can attend to business, can deliver outcomes to the residents and ratepayers and can do so with the utmost honesty, openness and transparency. The people of Latrobe City deserve at least this much.

Health and Wellbeing

Bird Flu

TYPE A influenza viruses are infectious disease-causing organisms that can affect humans and animal species including birds, pigs and horses. The strains that affect birds are called avian influenza viruses. Most infections spread from wild birds, in which the disease is usually mild or not apparent. The avian influenza, or bird flu, that is presently affecting South East Asia is the H5N1 strain.

This disease is lethal to poultry and there have also been human infections. Bird flu is not present in Australia. The Department of Agriculture, Fisheries and Forestry has increased surveillance at all points of entry into the country to prevent the import of live birds and bird-related products from countries where the bird flu is present. Australia doesn't import live chickens, raw poultry or eggs.

Bird Flu in Australia

There are no reports of the current bird flu in Australia, either among birds or people. If Australia experienced an outbreak, the Federal Government would implement the Australian Action Plan for Pandemic Influenza, which details the actions that all governments and emergency services should take.

There have been five previous bird flu outbreaks in Australia among commercial flocks, all of which were contained and eradicated. The last outbreak was in 1997 in Tamworth.

Keeping wild birds and domesticated birds apart, and making sure that domesticated birds have a safe supply of drinking water, are the keys to preventing bird flu outbreaks. Poultry farmers have security systems, and the Australian Veterinary Emergency Plan

is designed to manage bird flu outbreaks among bird populations.

Symptoms in Humans

If you have recently returned from a country that had an outbreak of bird flu and you get flu symptoms, see your doctor for prompt diagnosis. Tell your doctor about your travel, including any visits to markets, farms or anywhere else where birds were present. The symptoms of bird flu are similar to regular influenza and include:

- Fever
- Sore throat
- Cough
- Headache
- Aching muscles.
- Complications

Bird flu in humans can cause a range of serious and potentially fatal complications, including:

- Eye infections
- Pneumonia, including viral pneumonia
- Acute respiratory distress
- Inflammation of the brain and heart.

Influenza viruses can mutate

Influenza viruses that infect animal species have the ability to mutate and also infect humans. The human immune system may have no defences against viruses that previously have only infected animals; therefore, infection with these viruses can result in more severe disease. It is also possible that the H5N1 virus may 'mix' with human influenza strains to form a new viral subtype not covered by the vaccine.

If the H5N1 virus were to mix with a human influenza virus, such a 'combined' virus could create a new human influenza virus with the capacity to

spread rapidly. Health experts are concerned that, if unchecked, the current bird flu affecting South East Asia could become a worldwide pandemic.

In the past, influenza pandemics have caused global havoc. The worst influenza pandemic in modern history was the Spanish flu, which occurred in 1918-19 and killed up to 50 million people. Measures to contain the spread of current bird flu include identifying and culling affected poultry flocks, research into developing appropriate tests and vaccines, and rigorous quarantine practices.

How the Virus is Spread

It is thought that water birds such as wild ducks are the carriers of all avian influenza type A viruses. Indeed, influenza type A viruses of other animals, including humans, may have evolved from avian influenza strains. The viruses are carried inside the intestines and are distributed into the environment via faeces.

Migratory birds infected with the virus could potentially spread the bird flu to whichever countries they visit. Wild birds don't usually get sick, but transmit the virus to domesticated birds, such as chickens and turkeys, which can be killed by the infection.

Symptoms in birds differ according to the species, but can include diarrhoea, respiratory distress, swollen head and death. A sick bird sheds the viruses in its feathers, mucous, saliva and faeces.

It is thought that humans are at risk of infection if they are in close contact with sick birds. For example, a person may handle a sick bird, contaminate their hands with chicken faeces, and then forget to wash their hands before

eating. They will then ingest the infected bird faeces. This is the most common way for a human to catch the bird flu.

The virus can also survive in raw poultry meat. There is no evidence that the current circulating strain of bird flu can be spread from human to human.

Incubation period

Although there have been too few human cases to determine the exact incubation period of bird flu, it would be expected to be from three to 10 days.

Treatment Options

Several anti-viral medications that are used to treat human influenza are effective for treating the bird flu. Secondary bacterial infections are treatable with antibiotics. A vaccine is in development, but is not currently available. People who contract bird flu are vaccinated against human influenza viruses to reduce the risk of the viruses 'mixing' to form a new flu strain.

Advice for Travellers

If you are travelling to a country where outbreaks of bird flu are occurring, suggestions include:

- Avoid coming in contact with domesticated birds such as chickens, ducks and geese. Don't go to farms or market places.

- Keep a careful eye on young children, as they like to put objects or their own fingers into their mouths.

- Be wary of eating eggs, because the shells may be contaminated with faeces. Wash eggs thoroughly before breaking. Wash hands thoroughly after handling eggs. Avoid foods that contain uncooked egg, such as mayonnaise.

- Wash hands, chopping boards and utensils thoroughly after handling raw poultry.

- Cook poultry at high temperatures. Cooking temperatures of 80°C or more destroy the bird flu virus in about 60 seconds.

- Regularly check for bird flu updates by logging on to the Department of Foreign Affairs and Trade Travel Bulletin and Travel Advisory website or the World Health Organization website.

Where to Get Help

- Your doctor
- Avian Influenza Hotline, Australian Government Department of Agriculture, Fisheries and Forestry Tel. 1800 675 888

- Communicable Diseases Section, Department of Human Services Victoria Tel. 1300 651 160

- World Health Organization website (for bird flu updates) www.who.int
- Australian Government Department of Foreign Affairs and Trade Travel Bulletin and Travel Advisory website (for bird flu updates) www.smarttraveller.gov.au

Things to Remember

- There are no reports of the current bird flu in Australia, either among birds or people.

- Accidentally eating infected bird faeces is the most common way for a human to catch the bird flu.

- If you have recently returned from a country that has had an outbreak of bird flu and you get flu symptoms, see your doctor for prompt diagnosis.

This article has been sourced by Hazelwood Health to provide up-to-date information on topical subjects.



SATURDAY 3rd DECEMBER 2005

8.00am

MAKE A NOTE IN YOUR DIARY

• CDCA COMMUNITY CHRISTMAS MARKET

RAISING FUNDS FOR
CHURCHILL INTERGENERATIONAL COMMUNITY HUB

&

• CHURCHILL SALOON CHRISTMAS RAFFLE

RAISING FUNDS FOR
THE ROYAL CHILDRENS HOSPITAL APPEAL

BRING YOU THE GRAND FINALE OF
CHURCHILL 40TH ANNIVERSARY CELEBRATIONS

FUN FOR EVERYONE

FOOD & REFRESHMENTS

STALLS ENTERTAINMENT AND EXHIBITIONS

HISTORIC PANELS AND MEMORABILIA

Looking At Mars Through a Telescope

BY JEFF SING

TONIGHT in the early evening as you look towards the north-east you will see the brilliant outer terrestrial planet, Mars, very close to the horizon. By midnight the red planet will reach its maximum altitude of about 36° above the horizon (or about two hand spans held at arms length).

Mars is the planetary highlight for 2005. Mars reached its perihelic (closest) approach on October 30 at a distance of about 69 million kilometres, a little less than the 55 million kilometres than it did in August 27, 2003 when Mars was the closest to Earth for over 73,000 years.

However the Martian disk is not large as the 2003 apparition this time but still reached 20 arc seconds in angular diameter around opposition - only 20% less than the 25 arc seconds it was in August, 2003 when it reached about half the angular size of Jupiter. At the moment Mars is still 20 seconds of arc, or about 1/100 the angular size of the Moon.

Mars came to opposition on November 7 when the Sun, Earth and Mars were together in a straight line. Mars is an all night object at the moment and for the next couple of months it will continue to rise about five minutes earlier and set about five minutes earlier each day. Then it will rise and set earlier and earlier for another few months until mid-2006 when it will be too close to the Sun for observation.

Mars' brightness in mid-2006 will rapidly decrease forty-fold due to the Earth racing away from the slower moving Mars and an increased large distance between them. Also the size of the Martian disk will shrink to less than 4 seconds of arc, or only 20% of its present size by the end of June, 2006.

Mars is better viewed in the northern hemisphere where in places such as Europe, England and North America its altitude reaches a maximum of about 65° above the horizon - not far from the point overhead. However Mars will never reach more than 36° in altitude above the horizon from the latitude of the Latrobe Valley during the 2005-2006 apparition. For southern observers Mars is best suited when oppositions occur around the southern winter months such as occurred on June 14, 2001 and August 29, 2003.

The next opposition of Mars will occur on December 24, 2007 where the disk will shrink to less than 16 seconds of arc. Oppositions of Mars happen every 26 months and the most favourable ones occur once every 15 years. The next favourable (perihelic) opposition won't be until July 27, 2018 when the disk will reach 24 seconds of arc, almost to the size of the 2003 event.

However, Mars is still a suitable target in small telescopes at any opposition - even though some oppositions are more favourable than others.

If you wish to view Mars through a telescope from now and until the time when the disk becomes too tiny, any small (in diameter that is) astronomical refractor or reflector telescope will provide good views of Mars for the interested observer. Larger aperture instruments are a necessary requirement for serious study of the planet.

However before one rushes into purchasing a telescope consider the longer term implications of using the telescope as Mars may only whet your appetite for the next month or so before it will rapidly shrink to a size too small for useful observation. Then inevitably the newly purchased telescope will gather dust in the closet or garage. One must be sure of the need and purpose of investing in a telescope. Perhaps for most novices using a pair of binoculars is a good introduction to visual astronomy.

It is best to seek advice from those experienced amateurs belonging to an astronomical society, such as the one here in the Valley (described below) before deciding to buy a telescope.

Coloured filters are an important, but not essential aid in observing Mars when looking through a telescope. These are called 'planetary filters' - as opposed to the 'nebula filters' that are primarily used for deep sky observing. Planetary filters cost around \$10 to \$20, whereas nebula filters can be an expensive at around \$100 to \$200. You will find that planetary filters can be screwed into the threads inside the eyepiece barrel behind the rear lens of the eyepiece.

Red and orange filters are best suited to reveal dark surface features on Mars. Blue or green fil-

ters are better for detecting Martian atmospheric features and ice caps.

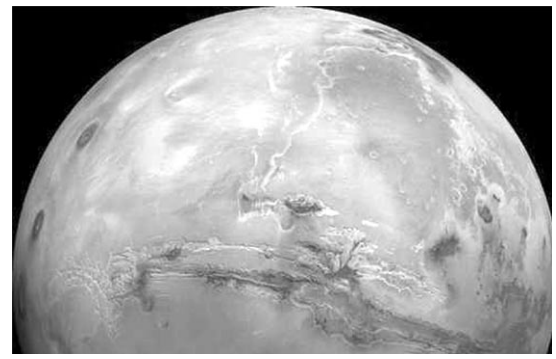
Medium magnification between 75X to 150X is best suited when observing Mars this time round. Since Mars altitude is low the thickness of the atmosphere near the horizon can cause problems in viewing the planet due to turbulence and dust particles which often produce unsteady, shimmering images. On nights of very good seeing conditions one may be able to boost the telescope's magnification to nearly 200X if you own a medium or large telescope, that is, a telescope eight inches or more in diameter.

The maximum useful magnification of any telescope depends on the sky conditions, the quality and size of your instrument and the type of astronomical subject observed. Good planetary viewing is reliant on those brief moments of exceptional seeing that allow a wealth of surface and atmospheric detail to be seen - a precious commodity for the intrepid observer. The best observational results can be gained only through experience and loads of patience with long hours at the telescope.

Unpredictable dust storms sometimes occur on Mars around the time of a few weeks either side of opposition as happened in 2001 (but not during 2003) and this can have an effect on the amount of detail you can see through the telescope.

Dedicated amateur astronomers can still make useful and sometimes surprising contributions through their observations of Mars with even the simplest of equipment. In spite of an age of close examination of the Martian surface by orbiting spacecraft and rovers on the ground, thousands of amateurs around the globe have made a large amount of very meticulous and useful observations for professionals to analyze and disseminate. These are submitted to official astronomical bodies such as the Association of Lunar and Planetary Observers (ALPO) and the Mars Watch program. The ALPO can be found at www.lpl.arizona.edu/~rhill/alpo/mars.html Also the 2005 International Mars Watch web site is at www.elvis.rowan.edu/marswatch

Professional astronomers still rely on amateur



astronomers to provide long term observational data about the planet, and that it may be that some trivial item (or items) recorded by amateur observers may lead to some important discoveries in future to help solve some of the mysteries surrounding the origin and formation of Mars. Also the data gathered by numerous vigilant amateur planetary observers around the world may help scientists plan future space missions to Mars.

For those with only a general interest in observing Mars you can visit the Sky & Telescope web site at www.skyandtelescope.com and follow the links to pages dealing with the observation of Mars.

I managed to get good views of Mars during the 2003 apparition using my eight inch (200mm) Newtonian short-focus f/5 reflector. Longer focus instruments, however, are more suited to serious planetary observing than rich field short-focus telescopes that are designed more for deep sky observations of star clusters, nebulae and galaxies.

Refracting telescopes, especially those four inches (100mm) in diameter or more are best suited to observing Mars and other celestial bodies in the solar system for serious minded amateurs. For those interested in this field of astronomy and would like to know more about telescopes and other astronomical equipment please come along to the following meeting place of like-minded enthusiasts. Beginning astronomers are also very welcome.

The Latrobe Valley Astronomical society meets every second Tuesday of the month from February to November each year at the Wirilda Environment Park conference centre near Tyers starting at 7.30 p.m. For details contact Gavan Dinsdale on 51746453 or visit the society's website at <http://home.vicnet.net.au/~lvas>. The next meeting of the society will occur on Tuesday, 14 February 2006.

Valley Christian Community Care Helping Hand Program

THE Assemblies of God Valley Christian Centre in Maryvale Road Morwell, has been running the Valley Christian Community Care Helping Hand Program for four and a half years.

This program assists the needy with free food, clothing and household items, on a fortnightly basis. Up to 60 families are serviced per fortnight. Debbie, the organiser, says these families are not drug users, alcoholics or criminals. They are just doing it tough, being unemployed and on Welfare. Many are regulars, but there are a few new ones each fortnight. Some come only when they are desperate. Some are single parents families where the parent is unemployed. Many are on a pension, and by the time they have paid for medication and the rent, there is little left for food etc. The supply of a hamper (approximately \$50 in value) may mean that the family can pay their electricity bill, for example.

To qualify for the hamper, the person must have a pension or health care card. They also must book in for an interview- a 15 minute conversation- a week before and order their hamper. This gives the team a chance to prepare the necessary number of Hampers.

The people come in then, and have a chat, a prayer, and a time to interact with the team members, over a free cuppa, which includes homemade cakes and muffins. The sensitive, non-judgemental outreach gives people an opportunity to share their troubles and have someone listen actively. Relationships are being built, and support given

through this Christian organisation.

This church through its pro-active organiser, Debbie, receives wonderful amounts of donations, like the annual donation from Edison Mission, and I.C.E.S.. They also have supplies from the Food Bank and Victorian Relief Fund. Some of this was once free, but now due to their amalgamation, all food will have to be purchased. Many local businesses are extremely supportive also. Trying to source food support and sponsorship is a continual process, to keep their food warehouse stocked. They also supply clothing, shoes and furniture at reasonable prices, or free if the need is great.

Another very valuable program run by the Valley Care people is the breakfast clubs at primary schools in Morwell, at Crinigan Road, Commercial Road, and Morwell Park, and in Moe at South Street and Albert Street schools.

Valley Care is supplying cereal, yoghurt, bread, and in some cases, volunteer Valley Care helpers to help run the program.

This program they want to expand to other schools where there is a need.

The principal at one school said that the breakfast club was fantastic, but also made comment that a lot of children came to school without lunch also!

This was the incentive Debbie and her crew needed to instigate their "Let's Do Lunch" program. This is now happening at Crinigan Road, Commercial Road, Morwell Park, and Tobruk Street and has been extended to South Street and

Albert Street in Moe.

Next step is to extend both programs to Kurnai College, with a breakfast club and a barbecue lunch once a month, hopefully progressing to a weekly occurrence.



Trust Grant

The Valley Care Program has also received financial assistance from the Latrobe City Trust. In December 2004, The Trust provided Helping Hand with a grant of \$5000 from the Gambling Impact Fund towards the expansion of the Food Outreach Program and the provision of the Morwell School Lunch Program.

Valley Care also has a huge Christmas party for all their clients. The clients are given food hampers, junior/senior school packs, toys, and books courtesy of the Brotherhood of St. Lawrence, Castles Hampers, and a toy company.

The success of these ventures has been shared with other AOG churches, and programs have extended to Moe (Wirraway House), Mirboo North, Warragul, Sale, Newborough and Maffra.

The Valley Care team receives many thank you letters, and are thrilled that their efforts are appreciated.

Debbie says as a Christian group they are compelled by God to feed the hungry, and look after those less fortunate. She says God has supplied their needs to such an extent, that they are able to share any surpluses with other breakfast clubs and organisations.

Jenkins Urges All To Commemorate International Day of People With Disability

SATURDAY 3 December is International Day of People with a DisAbility and local Labor MP Brendan Jenkins has urged people to celebrate the day locally.

"I believe the Latrobe Valley is a very inclusive community that welcomes people with disability to be involved in every aspect of political, social, sporting and cultural life," he said.

"International Day of People with DisAbility provides an opportunity for us all to promote the achievements of people with disability and create awareness of the benefits of creating a fully inclusive community."

Mr Jenkins said days of commemoration such as this were a great opportunity to unite disability and community organisations, people with disabilities and their carers, businesses, all levels of government and the wider community to promote positive messages about the issues surrounding disability.

"There are many ways to celebrate the day," Mr Jenkins said. "From simple things such as wearing a lapel pin or finding out more about people with a disability, their carers and the organisations that support them, to holding a function of your own."

"It is a great occasion and I encourage everyone to mark it."

Looking At Mars Through a Telescope

BY JEFF SING

TONIGHT in the early evening as you look towards the north-east you will see the brilliant outer terrestrial planet, Mars, very close to the horizon. By midnight the red planet will reach its maximum altitude of about 36° above the horizon (or about two hand spans held at arms length).

Mars is the planetary highlight for 2005. Mars reached its perihelic (closest) approach on October 30 at a distance of about 69 million kilometres, a little less than the 55 million kilometres than it did in August 27, 2003 when Mars was the closest to Earth for over 73,000 years.

However the Martian disk is not large as the 2003 apparition this time but still reached 20 arc seconds in angular diameter around opposition - only 20% less than the 25 arc seconds it was in August, 2003 when it reached about half the angular size of Jupiter. At the moment Mars is still 20 seconds of arc, or about 1/100 the angular size of the Moon.

Mars came to opposition on November 7 when the Sun, Earth and Mars were together in a straight line. Mars is an all night object at the moment and for the next couple of months it will continue to rise about five minutes earlier and set about five minutes earlier each day. Then it will rise and set earlier and earlier for another few months until mid-2006 when it will be too close to the Sun for observation.

Mars' brightness in mid-2006 will rapidly decrease forty-fold due to the Earth racing away from the slower moving Mars and an increased large distance between them. Also the size of the Martian disk will shrink to less than 4 seconds of arc, or only 20% of its present size by the end of June, 2006.

Mars is better viewed in the northern hemisphere where in places such as Europe, England and North America its altitude reaches a maximum of about 65° above the horizon - not far from the point overhead. However Mars will never reach more than 36° in altitude above the horizon from the latitude of the Latrobe Valley during the 2005-2006 apparition. For southern observers Mars is best suited when oppositions occur around the southern winter months such as occurred on June 14, 2001 and August 29, 2003.

The next opposition of Mars will occur on December 24, 2007 where the disk will shrink to less than 16 seconds of arc. Oppositions of Mars happen every 26 months and the most favourable ones occur once every 15 years. The next favourable (perihelic) opposition won't be until July 27, 2018 when the disk will reach 24 seconds of arc, almost to the size of the 2003 event.

However, Mars is still a suitable target in small telescopes at any opposition - even though some oppositions are more favourable than others.

If you wish to view Mars through a telescope from now and until the time when the disk becomes too tiny, any small (in diameter that is) astronomical refractor or reflector telescope will provide good views of Mars for the interested observer. Larger aperture instruments are a necessary requirement for serious study of the planet.

However before one rushes into purchasing a telescope consider the longer term implications of using the telescope as Mars may only whet your appetite for the next month or so before it will rapidly shrink to a size too small for useful observation. Then inevitably the newly purchased telescope will gather dust in the closet or garage. One must be sure of the need and purpose of investing in a telescope. Perhaps for most novices using a pair of binoculars is a good introduction to visual astronomy.

It is best to seek advice from those experienced amateurs belonging to an astronomical society, such as the one here in the Valley (described below) before deciding to buy a telescope.

Coloured filters are an important, but not essential aid in observing Mars when looking through a telescope. These are called 'planetary filters' - as opposed to the 'nebula filters' that are primarily used for deep sky observing. Planetary filters cost around \$10 to \$20, whereas nebula filters can be an expensive at around \$100 to \$200. You will find that planetary filters can be screwed into the threads inside the eyepiece barrel behind the rear lens of the eyepiece.

Red and orange filters are best suited to reveal dark surface features on Mars. Blue or green fil-

ters are better for detecting Martian atmospheric features and ice caps.

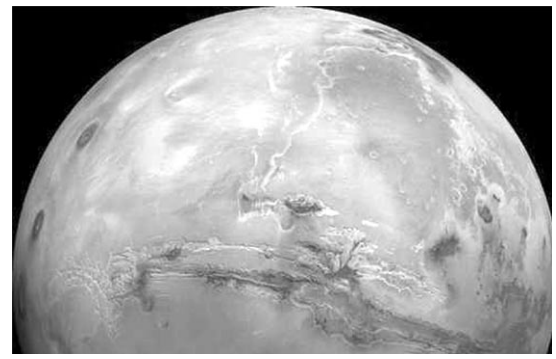
Medium magnification between 75X to 150X is best suited when observing Mars this time round. Since Mars altitude is low the thickness of the atmosphere near the horizon can cause problems in viewing the planet due to turbulence and dust particles which often produce unsteady, shimmering images. On nights of very good seeing conditions one may be able to boost the telescope's magnification to nearly 200X if you own a medium or large telescope, that is, a telescope eight inches or more in diameter.

The maximum useful magnification of any telescope depends on the sky conditions, the quality and size of your instrument and the type of astronomical subject observed. Good planetary viewing is reliant on those brief moments of exceptional seeing that allow a wealth of surface and atmospheric detail to be seen - a precious commodity for the intrepid observer. The best observational results can be gained only through experience and loads of patience with long hours at the telescope.

Unpredictable dust storms sometimes occur on Mars around the time of a few weeks either side of opposition as happened in 2001 (but not during 2003) and this can have an effect on the amount of detail you can see through the telescope.

Dedicated amateur astronomers can still make useful and sometimes surprising contributions through their observations of Mars with even the simplest of equipment. In spite of an age of close examination of the Martian surface by orbiting spacecraft and rovers on the ground, thousands of amateurs around the globe have made a large amount of very meticulous and useful observations for professionals to analyze and disseminate. These are submitted to official astronomical bodies such as the Association of Lunar and Planetary Observers (ALPO) and the Mars Watch program. The ALPO can be found at www.lpl.arizona.edu/~rhill/alpo/mars.html Also the 2005 International Mars Watch web site is at www.elvis.rowan.edu/marswatch

Professional astronomers still rely on amateur



astronomers to provide long term observational data about the planet, and that it may be that some trivial item (or items) recorded by amateur observers may lead to some important discoveries in future to help solve some of the mysteries surrounding the origin and formation of Mars. Also the data gathered by numerous vigilant amateur planetary observers around the world may help scientists plan future space missions to Mars.

For those with only a general interest in observing Mars you can visit the Sky & Telescope web site at www.skyandtelescope.com and follow the links to pages dealing with the observation of Mars.

I managed to get good views of Mars during the 2003 apparition using my eight inch (200mm) Newtonian short-focus f/5 reflector. Longer focus instruments, however, are more suited to serious planetary observing than rich field short-focus telescopes that are designed more for deep sky observations of star clusters, nebulae and galaxies.

Refracting telescopes, especially those four inches (100mm) in diameter or more are best suited to observing Mars and other celestial bodies in the solar system for serious minded amateurs. For those interested in this field of astronomy and would like to know more about telescopes and other astronomical equipment please come along to the following meeting place of like-minded enthusiasts. Beginning astronomers are also very welcome.

The Latrobe Valley Astronomical society meets every second Tuesday of the month from February to November each year at the Wirilda Environment Park conference centre near Tyers starting at 7.30 p.m. For details contact Gavan Dinsdale on 51746453 or visit the society's website at <http://home.vicnet.net.au/~lvas>. The next meeting of the society will occur on Tuesday, 14 February 2006.

Valley Christian Community Care Helping Hand Program

THE Assemblies of God Valley Christian Centre in Maryvale Road Morwell, has been running the Valley Christian Community Care Helping Hand Program for four and a half years.

This program assists the needy with free food, clothing and household items, on a fortnightly basis. Up to 60 families are serviced per fortnight. Debbie, the organiser, says these families are not drug users, alcoholics or criminals. They are just doing it tough, being unemployed and on Welfare. Many are regulars, but there are a few new ones each fortnight. Some come only when they are desperate. Some are single parents families where the parent is unemployed. Many are on a pension, and by the time they have paid for medication and the rent, there is little left for food etc. The supply of a hamper (approximately \$50 in value) may mean that the family can pay their electricity bill, for example.

To qualify for the hamper, the person must have a pension or health care card. They also must book in for an interview- a 15 minute conversation- a week before and order their hamper. This gives the team a chance to prepare the necessary number of Hampers.

The people come in then, and have a chat, a prayer, and a time to interact with the team members, over a free cuppa, which includes homemade cakes and muffins. The sensitive, non-judgemental outreach gives people an opportunity to share their troubles and have someone listen actively. Relationships are being built, and support given

through this Christian organisation.

This church through its pro-active organiser, Debbie, receives wonderful amounts of donations, like the annual donation from Edison Mission, and I.C.E.S.. They also have supplies from the Food Bank and Victorian Relief Fund. Some of this was once free, but now due to their amalgamation, all food will have to be purchased. Many local businesses are extremely supportive also. Trying to source food support and sponsorship is a continual process, to keep their food warehouse stocked. They also supply clothing, shoes and furniture at reasonable prices, or free if the need is great.

Another very valuable program run by the Valley Care people is the breakfast clubs at primary schools in Morwell, at Crinigan Road, Commercial Road, and Morwell Park, and in Moe at South Street and Albert Street schools.

Valley Care is supplying cereal, yoghurt, bread, and in some cases, volunteer Valley Care helpers to help run the program.

This program they want to expand to other schools where there is a need.

The principal at one school said that the breakfast club was fantastic, but also made comment that a lot of children came to school without lunch also!

This was the incentive Debbie and her crew needed to instigate their "Let's Do Lunch" program. This is now happening at Crinigan Road, Commercial Road, Morwell Park, and Tobruk Street and has been extended to South Street and

Albert Street in Moe.

Next step is to extend both programs to Kurnai College, with a breakfast club and a barbecue lunch once a month, hopefully progressing to a weekly occurrence.



Trust Grant

The Valley Care Program has also received financial assistance from the Latrobe City Trust. In December 2004, The Trust provided Helping Hand with a grant of \$5000 from the Gambling Impact Fund towards the expansion of the Food Outreach Program and the provision of the Morwell School Lunch Program.

Valley Care also has a huge Christmas party for all their clients. The clients are given food hampers, junior/senior school packs, toys, and books courtesy of the Brotherhood of St. Lawrence, Castles Hampers, and a toy company.

The success of these ventures has been shared with other AOG churches, and programs have extended to Moe (Wirraway House), Mirboo North, Warragul, Sale, Newborough and Maffra.

The Valley Care team receives many thank you letters, and are thrilled that their efforts are appreciated.

Debbie says as a Christian group they are compelled by God to feed the hungry, and look after those less fortunate. She says God has supplied their needs to such an extent, that they are able to share any surpluses with other breakfast clubs and organisations.

Jenkins Urges All To Commemorate International Day of People With Disability

SATURDAY 3 December is International Day of People with a DisAbility and local Labor MP Brendan Jenkins has urged people to celebrate the day locally.

"I believe the Latrobe Valley is a very inclusive community that welcomes people with disability to be involved in every aspect of political, social, sporting and cultural life," he said.

"International Day of People with DisAbility provides an opportunity for us all to promote the achievements of people with disability and create awareness of the benefits of creating a fully inclusive community."

Mr Jenkins said days of commemoration such as this were a great opportunity to unite disability and community organisations, people with disabilities and their carers, businesses, all levels of government and the wider community to promote positive messages about the issues surrounding disability.

"There are many ways to celebrate the day," Mr Jenkins said. "From simple things such as wearing a lapel pin or finding out more about people with a disability, their carers and the organisations that support them, to holding a function of your own."

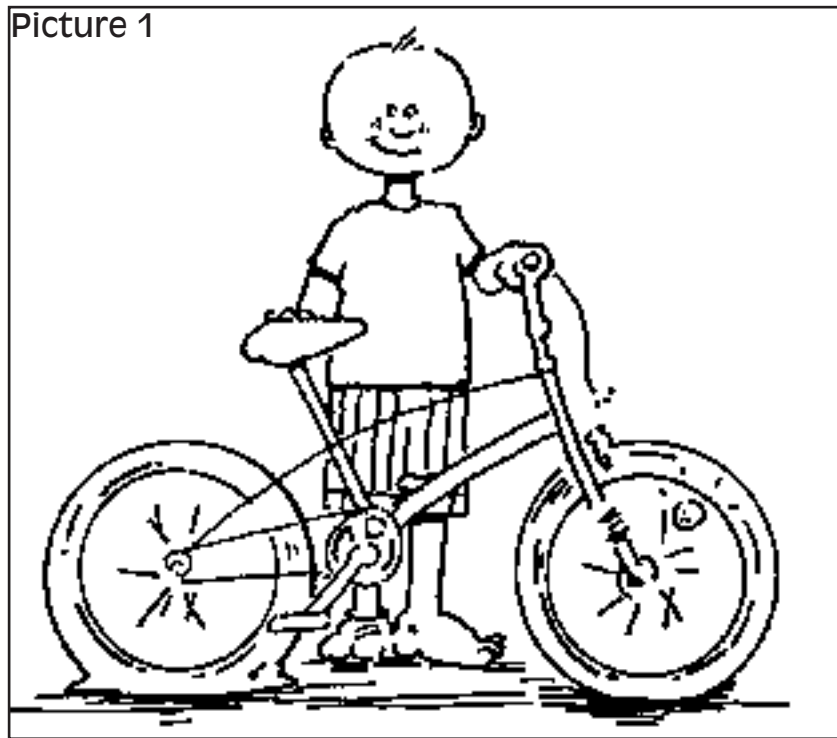
"It is a great occasion and I encourage everyone to mark it."

BIKE SAFETY COMPETITION

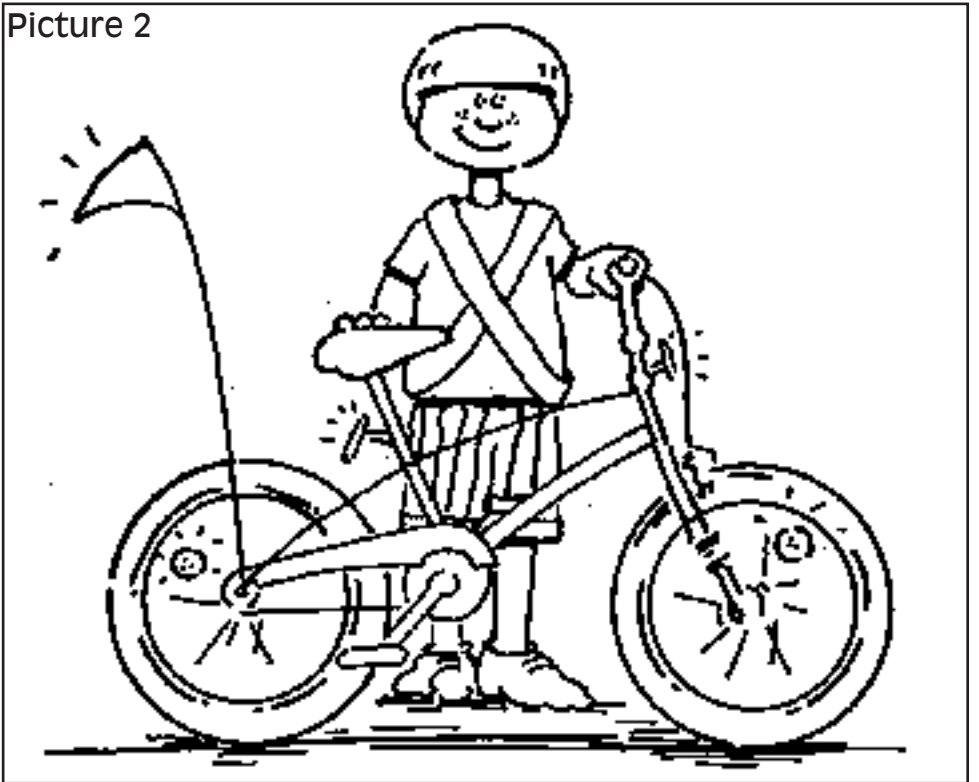
*** WIN A BIKE ***

Enter our bike safety competition and you could win a new bike! We have one girl's bike and one boy's bike to give away so enter NOW! Entries close next Friday November 11.

Picture 1



Picture 2



1. Colour in both Pictures
2. On Picture two circle all extra things on the bike to make riding safer.
3. Fill in your name and address
4. Send your pictures to Bike Competition, PO Box 234, Churchill or drop it into the Churchill and District News box at Cafe Le Mac, Churchill Primary School, Co-Operating Church in Williams Avenue.
5. Entries must be in by 18th November 2005

Name

Address

Telephone Age

LIONS BIRTHDAY CLUB

*Proudly sponsored by the
Lions Club of Churchill & District Inc.*

Hi Kids,

If you are under 12 years old you can join the club. Ask your Mum, Dad, Guardian or Carer to ring the Editor of the CHURCHILL AND DISTRICT NEWS on 5122 2589 or write to

LIONS BIRTHDAY CLUB
PO BOX 110
CHURCHILL 3842



with your NAME, ADDRESS, PHONE NUMBER, BIRTHDATE, and whether BOY or GIRL. **We need more members so please join NOW.**

The lucky "Birthdayites" for September were
Jedd Britton and Danielle Flanigan

BIRTHDAYITES FOR OCTOBER 2005

Lauren AKERS	5 years	Linda MARTIN	6 years
Daniel BEYER	11 years	Hayden MAY	10 years
Rebecca BUCKLEY	11 years	Jasmine PORTER	5 years
Richard CUSICK	7 years	Daniel TRUSCOTT	11 years
Scott MARRIOTT	12 years	Courtney VELLA	8 years

The randomly chosen "BIRTHDAYITES" for October are
REBECCA BUCKLEY and SCOTT MARRIOTT

Congratulations, you have each won a \$15 voucher for Churchill Newsagency. We will contact you soon..

John Barker

Publicity

Birthdayites



Trent ROSEWELL, 4 years on the 11th of October

Dana LAWSON, 10 years on the 18th October



These "Birthdayites" were all smiles as they were each presented with a \$15 voucher for Churchill Newsagency by John Barker from the Lions Club of Churchill & District. They were

chosen at random from the October list.

This could have been you - make sure you join so you also have the chance to be a lucky "Birthdayite".

Snake Tales

Mixed Start For Cobras

By SCOTT GUERIN

WELL, my prediction was sort of right, Churchill C Grade are 3 zip, however our A and B graders have had some mixed results. We may as well start at the beginning, the seemingly most logical place to start, at Round 1. Unfortunately, Round 1 was a wash out so no teams played, so maybe I should not have bothered to start from the start, though technically if we didn't play in round 1, is that the start?? or is Round 2 the start??? Being that we started playing then.....hmmmm interesting. Anyway, Round 2 saw the beginning of games (the start??) and the mighty Cobras faced off against those baddies from Traralgon, Imperials. Now Churchill and Imps have sort of built up a bit of a rivalry with Imps, after a nasty incident a few years ago which allowed Imps to make the finals and cancelled the small hope that Churchill had of making the finals, despite an agreement in place etc.

Anyway, Churchill batted first and gave to batting what Sally Robbins gave to Rowing. A good start but kinda died in the middle. Capt Craig Giddens and Rino Metlikovec gave the Cobras a good platform of 32 for the first wicket, and it went very much down hill from there. Only 4 Churchill batsmen made double figures, and 3 made ducks in an ordinary score of 76. This was always going to be hard to defend, and despite the bowlers best effort, most notably the Evergreen Peter Kearns who took 3 wickets, 76 was never going to be enough, with Imperials making the runs losing only 5 wickets in 35 overs.

Our B Graders faired no better, though not surprisingly made more runs (so have our Junior sides every week!!!!). Last Years premiers would have felt confidant with a strong top 6, however could only reach 117. Big Stan Urbanic top scored with 24, followed by Stevie Mayer with 20. However again only 4 Churchill batsmen made double figures, with 2 making ducks. Once again, never easy to defend 117, despite having bowling depth (or so I thought till Leigh Walker was first change!!!). The Churchill team tried manfully; however without Haydn Whitty's Iron Craw directing them, they were never going to win with Imps winning after 40 overs with only 5 wickets down. A poor start for the reigning premiers, though no talk of a premiersip hangover just yet.....Yet.

Round 3 saw a big game for A grade at

Andrews Park against a CATS teams which is promising much this year. CATS batted first and despite some good bowling from recruit Mick Mooney (3 wickets), young gun Dan McKenna (2 Wickets) and old timer Bluey Flanigin (1 wicket), Cats rattled up a competitive total of 184 losing 8 wickets in the process (9 of these coming off one, I repeat ONE, Craig Giddens over!!).

Churchill knew that they needed a good start, which Rino Metlikovec and J Lo, whoops I mean Leigh Walker, putting on 51 for the first wicket when Rino was out. Walker fell not long after that, however Craig Giddens and Steve Mayer steadied the ship until Mayer was Bowled. Wickets fell pretty steadily after that around Bluey Flanigan, but with some solid help from Dan McKenna almost pulled off a great victory, until Dan was run out. Then Stan Urbanic Jr was run out. It all came down, Haydn Whitty facing the final ball, needing 2 runs to win, one to tie the game. Now I would love to sit here and write how Whit hoicked the ball over mid-wicket for 4 and Churchill won and everything was great, BUT, unfortunately, I have to write the Whit choked and the game was a tie. Harsh, yes, fair, well, it's Whit who cares. No, in all seriousness, Whit played the ball to point, they scampered through for a single, a shot at the stumps from the fielder missed, they tried for a second run, however Whit was run out falling just short of his ground.

B Grade were also looking for a better performance, however a marginally better batting performance, wasn't backed up by a better bowling performance. John Keighran was the leading wicket taker with 3, and big Stan Urbanic top scoring with 26. 2 losses on the trot for the reigning premiers, Premiersip hangover???

In better news, the Clubs premier team C grade commenced, and got on with what they do best, winning Cricket Games. They faced a fired up Glengarry Team, who batted first, however their performance was poor with only one player really troubling the scorers. The total of 65 was never going to be enough, and it wasn't. The destroyer was the Wayne M Reynolds, with 4 wickets, quite an achievement from Wayne. Churchill won the game before losing a wicket, with Jim Armstrong and Brett 'Robbo' Robinson doing the damage. Brett got 51 whilst Jim got 20. Other notable scores were Chris McQuillen, the master of the Red Ink, with 24 Not out, and Graeme Ayre with 23.

Churchill A Grade's form was solid, but they need a big win to consolidate everything, and what better way than over rival Ex Students, who are struggling at present. Ex Students won the toss and sent Churchill in, hoping early life in the wickets would help their bowlers. It didn't and Churchill went on their way to amassing a massive score of 341 in the day. Leigh Walker finally got his first A grade 50 with Churchill, Criag Giddens found some form with 38, Bluey continued his good form with 46, though retired hurt, but the highlight was a sparkling 98 from Brett Duncan. Brett has long teased his supporters with flashes of brilliance, and had he not been run out, would have made sure of his first A Grade ton, but he didn't and subsequently lost his chance that he may never ever get again!!!! I tell you this, had there been a VB Stubby at the other end of the pitch, he'd have made it. Churchill was always going to defend this total and with Haydn Whitty taking 3 wickets, Bluey Flanigan completing a fine double with 3 wickets, and Craig Giddens finding some bowling form (1-8 off 8) they easily accounted for Ex Students, in a game that should give them some confidence.

B Grade also gained some much need confidence, with a comfortable win against last year's grand final opponent. Some great bowling by Chris Williams and Nat Cook set up the victory in the first week. John Keighran's 40 and Stan Urbanic's 27 then made sure of a comfortable first win by the boys.

C Grade, well they just keep on winning with solid wins over Jeeralang/Boolarra and Traralgon West. Our C Grade team sits on top of the ladder and should once again press for the premiersip. I would have given more of a write-up on C Grade, but I'm not playing at the moment so I don't really want to pump them up too much, so I am able to get a game, when I come back.

Currently A grade are 6th on the ladder, and B Grade are 8th. We have several top line players to come back in over coming weeks, so I would expect these positions to be improved upon in the coming weeks.

In the juniors, well along with C grade they are leading the way for the club. Both sides have played twice and are both undefeated. The under 14s first game was against CATS, and though they lost the toss and bowled, they were instantly on top. Excellent fielding and some great bowling by young Chris Williams (5 wickets)

Alex Tatterson (3 wickets) and Ryan Harvey (2 Wickets) saw the Cobras reduce CATS to a score of 89. Churchill were able to pass the runs easily, and all 12 players got a bat, which is always good in juniors. Best with the Bat were Shaun Zaget with 25. Chris Williams completed a great all-round performance with 22, whilst Tyson Webb (7) and Matthew Harvey (6) were also valuable contributors.

Round 2 saw the Under 14s play Imperials in what was a great game of cricket by Churchill. Once again we lost the toss and had to bowl, but that didn't stop Tyson Webb (3 Wickets) and Chris Williams (5 wickets) from performing well over the 2 days. The Fielding was again a feature with some great catches held, including 2 from Matthew Smart in the slips. Our batting was once again lead by Shaun Zaget 36 and Chris Williams 14, with Jordan Fenech (8), and Ryan Harvey (6) providing great support.

The Under 16s also started their season off with a big clash against CATS. After winning the Toss and Bowling, Churchill needed a solid effort in the field. Our bowlers responded with an excellent effort, keeping the CATS team to just 67. Ryan Tatterson, (4 for 7) was the stand out, with Adam Curwood and Dale Murphy each taking 2 wickets. The Batting was lead Ryan Tatterson with 40, Jarrod Robson with 16 N.O. and Steve Leeson with 11. A good first up win for Churchill, who played finals last year.

Round 2 saw a big clash against perennial finalists in Juniors, Imps. Once again the Churchill team had to bowl first on a wet ground which made gripping the ball difficult. Captain Blake Cornell did well giving 9 bowlers a go, and it obviously worked as we reduced Imps to a modest score of 70. New player Alessio Zapulla did very well with his spinners taking 2-13, including a great stumping from Blake Cornell, whilst Dale Murphy, Ryan Tatterson, Ryan Bailey, Ashley Ypeelan, Scott Whittle and Steve Lesson taking a wicket each. In reply, the Cobras batting again stood up and with Ryan Bailey making 53, Dale Murphy 14, Adam Curwood 11 and Steve Leeson 8, Churchill easily accounted for Imps with a great score of 127 for the loss of just 3 wickets.

So far it has been a great start to the year from the juniors, and if our A & B graders can continue winning, the club will once again be a force in the TDCA.

Enjoy



The Over Forty's Social Singles Welcomes New Members

By JANET SWASH

T.O.F.S.S. inc is a not for profit group that caters for single people over the age of 40. We offer friendship and companionship to singles who would not otherwise be in a position to participate in weekly dinners, outings and events with others.

We know how difficult it is to get out and about again when a relationship has ended, be it through divorce, separation or death and welcome singles who may be in the same situation as us.

We welcome new members and encourage them to contact one of the committee whose name and phone number appears at the end of this article.

Some of the events we look forward to include: Dinner at Cricket club Hotel, Cowwarr and a progressive dinner to name but a few.

We also hold monthly meetings on the third Thursday of each month at the Migrant Resource Centre in Morwell.

For a copy of our current newsletter and further details contact Janet on 5133 9854, Di on 5134 5960, Jenny on 5174 2717, Barb on 5134 2126, Lorraine on 5134 3142 or Norm on 5134 5752, all of whom can give you more information on our organisation.

Gormandale Quilt Expo

THE Gormandale Community House are holding their Annual Quilt Expo and Children's Fun Day on the 12 and 13 of November. The Uniting Church Banners will also be displayed at the Expo.

The Quilt Expo is \$2.00 per person entry. The Expo is being held at the Mechanics Institute Main Road Gormandale from 9.30 - 5.30 on both days. There will be stalls, beading and quilting demonstrations with the new Community House

Quilting Machine being demonstrated on Saturday at 11.00am and 1.00pm at Community House. This machine will be available to the public to be used during Neighbourhood House opening hours for a small fee.

Devonshire teas will be available all day on both days for \$3.00 A huge plant sale is at the Community House on both days along with displays, stalls and Wine Tasting

The Children's free fun day is on

Saturday 12 from 10am - 2pm. There is a Jumping Castle available all day, with events such as Gumboot Throwing, Sack Races, Iron Kid Challenge, Fairy Tent, Face Painting, CFA Demonstration and games. There will be a free sausage sizzle and showbags.

If anyone has a quilt they would like to display at the Expo please contact Marcia on 5197 7264.

Old Time Family Dance

The next Jeeralang North old time family dance will be held in the Jeeralang North Hall on **Friday 25th November.**

Dancing from: 8.00 pm to 11.30pm

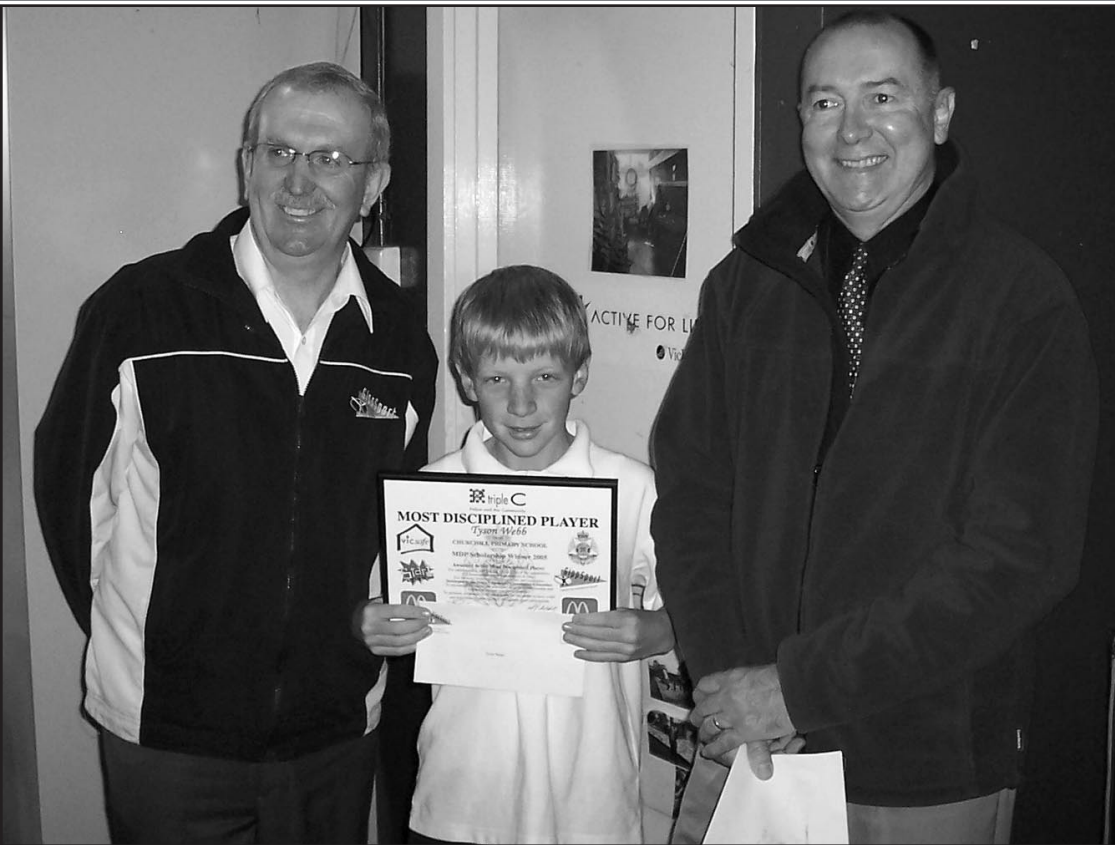
Music: Harmony Plus

Admission: \$5.00

Please bring a plate. Sandwiches supplied by the Committee. For more details ring Zelma Mildenhall on 5133 1264



Sports



Tyson Webb - Most Disciplined Player Award



THE Most Disciplined Player (MDP) Scholarship winners for 2005 have been announced.

Each winner received a cheque for \$200.00 and a framed certificate. The award and the MDP program are made possible with the support of P triple C - Police and Community and McDonald's Family Restaurants. GippSport is responsible for the conduct of the MDP program.

One of this year's winners was Tyson Webb from the Churchill Primary School.

Mr. John Turner, Assistant Principal of Churchill Primary School was pleased to nominate Tyson. This is what he wrote in his letter of nomination.

"I've nominated Tyson because he is an outstanding young person in the Churchill community.

At a school level, Tyson was elected by his peers as School Captain, and has represented our school in many facets, especially sport. He has excelled in the areas of cricket, soccer, netball, basketball and athletics. In several of those sports he has represented the Latrobe Valley in Melbourne. He always displays outstanding sportsmanship in all areas. As School Captain, he proudly represents our school, and we are very proud of him.

At a community level, Tyson is very active. He helps out at the Churchill Leisure Centre, especially with basketball, where he hands out scoreboards, sets up the lights and packs up at the end of evening competitions. He

actively supports Helimed by selling raffle tickets, attending working bees and helps set up displays. He has been known to assist for six hours at a time, handing out stickers, balloons, etc.

As a sports person, Tyson is fantastic. He won "Player of the Year" three times, with his soccer club, has tried out for the Victorian team, and was Junior Clubman in 2001. He is often selected in Latrobe Valley Squads.

Tyson is an absolutely delightful young student, and I cannot recommend him highly enough."

As part of winning the Most Disciplined Player Scholarship Award, Tyson was presented with a cheque for \$200, \$50 of which Tyson donated to the Churchill United Soccer Club. The soccer club also received \$50 from GippSport, as part of that award.

Part of the congratulatory letter which Tyson received said

".....The selection panel was very impressed with the contribution you are making at a club, association, and school level. We are pleased to note that you are prepared to help other people and give up your own time to assist."

Tyson was presented with his award at Churchill Primary School Assembly on Friday 14 October.

His parents, grandparents, school staff and students are very proud of this special young man.

Valley Trophy Centre

Wayne & Annette Draper
60 George Street
Morwell, Victoria, 3840
Phone: (03) 5134 1493
Fax: (03) 5134 1334
Email: vtrophy@bigpond.net.au

NEW

A gift with a difference
Personalise your Coffee Mug for your special occasion.

\$18.50

We also specialise in:
 * Glass & Acrylic Engraving
 * General Engraving Service
 * Jewellery Engraving
 * Name Badges
 as well as Trophies, Medallions & Plaques

Summer is upon us

Have your cooling system checked and flushed out & New Coolant added for **\$30.00***

M NEW CHURCHILL MOTORS
 Lot 8 Phillip pde CHURCHILL 3842
 Phone: (03) 5122 1380
 Fax: (03) 5122 3586
STEVEN ABBEY

*Conditions Apply

STRUT RE-GAS

Tel: (03) 5166 1665 Mob: 0407 542 122

"The Strut Specialist"

- New Struts available including Stainless Steel
- Automotive applications: cars, 4wd, trucks, buses & tractors.
- Office/Medical Equipment: chairs, photocopiers etc.
- Boats, Trailers & Industrial uses.

Struts are not throw away items.
They can be RE-GASED!

110 George Street Morwell **Podicare** Gift Vouchers Available
 Telephone: 5134 2375

Thursday November 17th All Day Town Sale

200 pairs Kumfs All day **HALF PRICE**
 100 pairs Homy Ped at \$50.00 per pair
 60 pairs Ass Brands \$40.00 per pair
 Other Specials Available on the Day

Churchill and Monash Golf Club Inc Results



Saturday Men's Comp:
Stableford Guest Day 1.10.05
 A Grade: (0-17) S McCafferty (13) 36pts. B Grade: (18-24) A Casey (21) 35pts. C Grade: (25-32) G Harvey (29) 31pts. DTL: G Wells 35, C Waterman 34, P Kearns 33, J Dickson 20, D Taylor 34, M Brereton 32. NTP: 3rd R Hodgson, 5th Propin M Brereton, 12th F Sedjak, 14th P Ludlow. Birdies: T Sterrick 12th, F DeBono 3rd, R Hodgson 3rd. A J Award: I Wilden, R Hodgson.

Sunday Men's Comp:
Stableford 2.10.05
 Winner: D Taylor (21) 41pts. DTL: G Beyer (13) 37pts, NTP: 5th R Welsh.

Sunday Ladies Comp:
Stableford 2.10.05
 Winner: J Blizzard (27) 33 pts. DTL: C Barnes (37) 28pts. NTP: 5th J Blizzard.

Tuesday Ladies Comp:
Monthly Medal 4.10.05

Scratch: M McConville (23) 91 Gross. A Grade: (0-34) M McConville (23) 68nett. B Grade (35-45) B Beebe (36) 77 nett. DTL: Eva D'Alterio 70, Vicky Verheyen 73 D Thomas 75, B Beebe 77. NTP: 3rd E D'Alterio, 5th Linda Jessop, 14th J Blizzard. Longest Drive: 0-32 J Blizzard, 33-45 V Rowley. Loss of Handicap: M McConville 21, E D'Alterio 21.

Saturday Men's Comp:
4BBB Stableford 8.10.05
 Winners: F Debono (32), L Stein (13) 44. Runners Up: G Wells (18) A Justice (27) 43. DTL: A Vandenharn/P Fitzmaurice 42, J McCafferty/I Wilson 51, J Jeffrey/K Hills 41. NTP: 3rd P Williams, 5th P Ludlow, 12th B Murphy. Birdies: D Taylor, P Ludlow, K Hills 5th.

Tuesday Ladies Comp:
Stableford 11.10.05 CCR70
 M McDonald (34) 27. DTL: C Gardam 26, E D'Alterio 24. NTP: 3/12 33-45 V Rowley, 5/12 0-32 Di Scurlock.

Saturday Men's Comp:
Par 15.10.05 CCR70

A Grade: (0-18) R Scurlock (8) +4 C/B. B Grade (19-24) G Down (21) --. C Grade: (25-32) V Monument (28) +4. DTL: R Scurlock +4, I Hepplestone +3, G Miller +3. NTP: 3rd D Jenkins, 5th R Hodgson, 12 G Down, 14th G Wells. Birdies: 3rd R Scurlock, 5th G Wells.

Sunday Men's Comp:
Stableford 10.10.05 CCR68
 Winner: G Down (21) 36pts C/B. DTL: G Britton.

Sunday Ladies Comp:
Stableford 16.10.05, CCR70
 E D'Alterio (21) 30. DTL: C Barnes (37) 28.

Tuesday Ladies Comp:
Par 18.10.05 CCR73
 A Grade: (0-29) M McConville (21) -2. B Grade: (30-45) C Barnes (38) +1. DTL: S Jeffery -1, J Beck -3, B Beebe -4. NTP: 3rd /12 0/32 J Leslie, 33-45 C Barnes. 5/14 0/32 J Leslie, 33-45 L Ollquist. Lost Handicap: C Barnes 38-36



GUY & DEBBIE D'ALIA (OWNER OPERATORS)
 543 Princes Drive, Morwell
 Same Service Road as the Italian Australian Club (Next to Boltco)
 PH: 5133 7000 FAX: 5133 8458
 MOBILE: 0412 949 091 A/H: 5122 1377

TRADING HOURS
 Monday - Friday
 7.30am - 5.00pm
 Saturday
 7.30am - 12.00pm

OUR HIGHLY TRAINED STAFF WITH 65 YEARS COMBINED SHOPFITTING/GLAZING EXPERIENCE



QUOTE OF THE MONTH
 Its never too late to become what you might have been...

AMAZING FACT!
 Honey is the only food that does not spoil. Honey found in the tombs of Egyptian pharaohs has been tested by archaeologists and found to be edible.

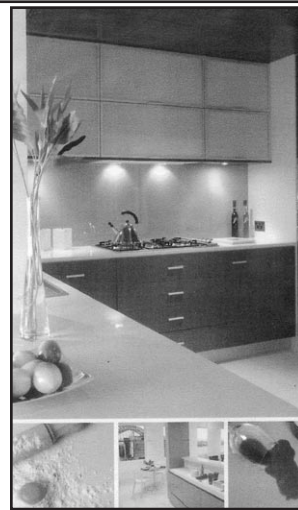


The next time you are in the vicinity of Post Office Place in Traralgon you will notice The Country Basket and Dyoligy stores have had a make-over!
 Guy's Glass is responsible for transforming the old, tired looking building into two stunning and up-to-date premises. We made and fitted the new shop front windows and doors using clear laminated safety glass at ground level.
 Evergreen laminated glass was used to transform the top level. I'm sure you'll agree that the improvement is remarkable!

NEW PRODUCT
QUANTUM QUARTZ
 Solid Quartz Surfaces

Product Comparison

Benchtop Material	Quantum Quartz	Granite	Marble	Synthetic
Non-porous	✓	x	x	✓
High resistance to scratching and chipping	✓	x	x	x
High abrasion resistance	✓	x	x	x
High resistance to staining	✓	x	x	✓
High flexural strength	✓	x	x	x
High resistance to acid	✓	x	x	✓



QUANTUM QUARTZ - From the subtle beige tones to the vibrant beauty of the luminescent Starlight colours.
 The **QUANTUM QUARTZ** manufacturing process is renowned worldwide and contains more than 93% natural quartz, 7% combined bonding agent, special additives and pigments.
QUANTUM QUARTZ benchtops and floors reflect the modern style and trend that leading architects and designers prefer.

CALL: 51 33 7000
FOR MORE INFORMATION ON THIS PRODUCT

GUY'S Guarantee

"FAST GLASS REPLACEMENT"
 WE GUARANTEE TO REPLACE YOUR GLASS WITHIN 24 HOURS, OR YOU WILL RECEIVE 50% OFF YOUR QUOTED PRICE!
 (THIS OFFER APPLIES TO STANDARD SIZE HOUSE WINDOWS ONLY)

CUSTOMER COMMENTS!

Dear Guy, Management & Staff,
 On behalf of Australian Climate Solutions I would like to take this opportunity to express my much felt gratitude for your prompt and efficient service. I am very appreciative that my works were made much simpler by the fact that yourself and your staff were so helpful.
 Once again I express my great appreciation for your service and look forward to working together in the future.
 Best Regards Simon Bowyer
 (Projects Coordinator)

JUST GIVE US 1% OF YOUR BUSINESS AND WE WILL EARN THE REST!



NEW STAFF MEMBER
Gavin

Due to our continued growth and need for fast efficient customer service, we are delighted to have Gavin as the newest member of our team of highly qualified employees.
 Gavin brings a much welcomed five years experience in Window Manufacturing to our company.

DEB'S
NATURAL CLEANING TIPS

Prevent Lint From Clinging to Clothes
 Add 1 cup of vinegar to each wash load.

Remove Ink spots From Clothing
 While ink is wet, apply lemon juice liberally to the spot, then wash the garment on a normal cycle with regular detergent in cold water



A WARNING FROM GUY'S GLASS
 THERE ARE ONLY 6 1/2 WEEKS TIL X'MAS...So hurry and get your orders in...**TIME IS RUNNING OUT!!!**

PERSPEX * ALUMINIUM * WINDOWS & DOORS * HEATER * GLASS * MIRRORS

INSURANCE * WORK * SHOWERS * SCREENS * GLASS * SPLASH / BACKS * GLASS