



# CHURCHILL & DISTRICT NEWS

## "Connecting Your Community"

Established 1966

Distributed Free

Flashback - p3

Plants in my Garden - p 14

Rose Garden Festival - p 15

Churchill CFA - p 22, 23



# It's beginning to look a lot like . . . Christmas



# Merry CHRISTMAS

Thank you from Churchill & District News Team

The team has worked hard again this year to produce our eleven issues and run the writing competition for our local primary schools. We have also supported the Shop Local events.

This could not be done without our

amazing article contributors who provide us with a wealth of interesting material for our reader's enjoyment.

COVID has not impacted us so much this year, but we have had some time working remotely due to interstate family commitments.

We cannot fully express our grateful

thanks to our loyal advertisers who ensure that the paper is printed, distributed and costs are covered.

To our loyal readers we thank you for your love of Churchill & District News. It is always satisfying to receive your positive feedback.

To the special people who value our

paper and its activities by giving donations and sponsorship, we are very touched by your generosity. It lifts our spirits and makes our constant efforts feel worthwhile.

From our team we send our greetings and best wishes to you all for a Happy Christmas and a safe, carefree and satisfying 2023.

Churchill & District News proudly reports that we were a Finalist in the Community Newspaper Association of Victoria awards for Best Newspaper.

## Community Newspaper Association of Victoria Awards

### Best Newspaper FINALIST

Judge: Jeanette Severs . . . "I read through all your newspapers and what a wonderful example of community story telling."

## THANKS

Churchill & District News thanks Latrobe City Council for their generous community grant which helps to keep the paper running to support our community.

RGM

Winner of the 2022 Federation University Gippsland Business Awards 2022

### Accountants & Advisors

- Tax Preparation
- GST & PAYG Compliance
- Tax Planning Strategies
- SMSF Compliance

### Financial Planning

- Retirement Planning
- Insurance Advice
- Self-Managed Super Funds (SMSF)
- Investment Advice

Drouin, 25 Princes Way | Moe, 33 Kirk Street | Traralgon, 18 Hotham Street

T: 03 5120 1400

Wealth for life



rgmgroup.com.au

**CHURCHILL & DISTRICT NEWS**

*"Connecting Your Community"*

Established 1966

Churchill and District News is a community newspaper staffed by volunteers.

**The Team**

- Editor: Carol Scott
- Team Leader/Secretary: Ruth Place
- Treasurer: Maureen Schenkel
- Assistant Treasurer: Jo Laukens
- Advertising: Ruth Place, Shelley McDonald, Allan Larkin
- Layout: Tracey Burr, Carol Scott, Ruth Place, Allan Larkin
- Production: Ruth Place, Shelley McDonald, Gary Weston, Geraldine Larkin, Carol Scott, Delma Hodges
- Distribution: Carl Hood
- Team Members: Bronte Hillis Harland, Barbara Cheetham, John Sunderland, Sam Gillett
- Webpage: [www.cdnews.com.au](http://www.cdnews.com.au)

Facebook page: Rebecca Barry, Tracey Burr



**Contributions**

**The DEADLINE FOR SUBMISSION of articles and advertisements for the February edition is January 25, 2023**

**EDITORIAL**

Articles for publication and Letters to the Editor can be sent to:

Churchill & District News  
 PO Box 234, Churchill, 3842  
 Or Email: [cdneditorial@cdnews.com.au](mailto:cdneditorial@cdnews.com.au)

All articles must be submitted by the 25th of each month for publication in the next issue.



the voice of the community

**MEMBER 2021**

**ADVERTISING**

Advertising enquiries can be addressed to:

Ruth Place or Allan Larkin  
 Churchill & District News

PO Box 234, Churchill, 3842 or email:  
[cdnadvertising@cdnews.com.au](mailto:cdnadvertising@cdnews.com.au)

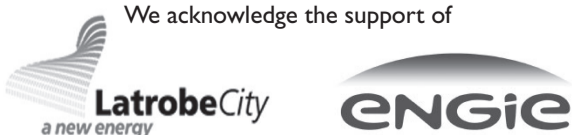
Telephone: Ruth 0456 786 577  
 Allan 0427 372 517

**Disclaimer**

The Churchill & District News wishes to advise that the views or remarks expressed in this publication are not necessarily the views of the Editor or the Management Team and no endorsement of service is implied by the listing of advertisers, sponsors or contributors.

**CHURCHILL & DISTRICT NEWS IS PRODUCED UNDER THE DIRECTION AND CONTROL OF THE CO-OPERATING CHURCHES OF CHURCHILL. THE CO-OPERATION IS MADE UP OF THE ANGLICAN AND UNITING CHURCHES.**

We acknowledge the support of



**2023 #lovegippsland calendar winners announced**

Local MP Darren Chester has announced the winners of the 2023 #lovegippsland calendar competition. The three winning images include a kangaroo and joey taken by Paula Walland of Warragul, as our bushland recovers from the fires; the historic Swing Bridge at Sale taken by Graeme Hunt of Lakes Entrance; and a quintessential rural scene of kelpies at Dargo taken by John Trail of Maffra.

Mr Chester said there were over 280 entries for the calendar and he was impressed by the high calibre of entries.

"This year's theme 'My Favourite Place in Gippsland' highlights many beautiful places throughout the region such as magnificent scenery, native wildlife and iconic Gippsland structures," Mr Chester said.

"The 13 images chosen to feature in the calendar are just a sample of the incredible imagery from across Gippsland and really showcase how diverse our region is.

Congratulations to our winners and to all the entrants for so many

wonderful entries, each year.

I am amazed to see the beauty of our region and talent of Gippslanders."

Free copies of the #lovegippsland calendar will be distributed throughout Gippsland and will also be available from Mr Chester's electorate offices in Sale and Traralgon.

Businesses and community organisations can request a box of calendars by contacting Mr Chester's electorate offices.



Local MP Darren Chester said the 2023 #lovegippsland calendars were now available throughout Gippsland.

**Rainfall**

**Churchill**

The November Rainfall was above average with 147 mm rain falling for the month, making it the wettest November since I commenced keeping rainfall records in 1992. The previous wettest November was in 2011 when 138 mm was recorded.

2022 has also been the wettest winter since 1992 and most likely the wettest on record for the Churchill area. Also there have been four months with in excess of 100 mm of rain being recorded.

The total rainfall for the year to date is 856 mm; still a long way short of the 1058 mm which was recorded in 2011.

**Hazelwood South.**

November was wet again, the third wettest in 36 years. The 145mm and 90% over the average for the month came with few sunny breaks and low temperatures.

The garden was affected by rust disease. Hazelwood South had 49% more rain than the Latrobe Valley weather station.

The year of 2022 is now at 12% above average. Little of the rain came from the east, and La Niña.

For a change, a lot of rain came from cold south west winds. More about rain next year. Merry Christmas and a Happy New Year, from Hazelwood South.

**Recycling scented candle remnants**

Do you love your scented candles? Don't like throwing out the remaining scented wax once the wick has burnt down? Seems so wasteful to throw out that remaining scented wax? Would like to enjoy that lovely scent a bit longer?

Here is an easy and practical recycling tip for maximum enjoyment of your leftover scented candle wax.

Pop the scented candle in its container into your freezer. Once frozen, it will be easy to remove (for the wax shrinks). Turn the container upside down and gently knock it on a bench

top - the leftover wax should just fall out.

Throw out any remaining bits of wick. Gather the wax pieces together or break into smaller bits if you have a large piece of wax - but not too small, you want chunks, not dust.

Pop the wax chunks into an old sock or stocking and secure the opening - a tied knot will do!

Place the sock/stocking under a seat in your car. The warmth from your car will release the scent from the wax, so you will be enjoying that scented candle for even longer.

**CAFE ALFA**  
**COFFEE IS BEST SERVED WITH A SMILE**  
*Thanks to our customers and Best Wishes for the Christmas Season*  
**OPEN**  
 TUESDAY - FRIDAY 7.30 TILL 3.00  
 SATURDAY & SUNDAY 8.00 TILL 2.00  
 Café ALFA

**CHURCHILL & DISTRICT NEWS**  
*"Connecting Your Community"*

**ADVERTISING RATES**  
 Effective January 1, 2023

No.	Size	Column size	B/W \$	COLOUR \$	10% Discount (6 issues)	
					B/W \$	COLOUR \$
1.	58 mm x 83 mm	2 x 5.8 cm	32.00	NA	28.00	NA
2.	123 mm x 83 mm	2 x 12.3 cm	65.00	103.00	58.00	93.00
3.	93 mm x 128 mm	3 x 9.3 cm	74.00	118.00	66.00	106.00
4.	58 mm x 260 mm	6 x 5.8 cm	93.00	150.00	84.00	134.00
5.	138 mm x 128 mm	3 x 13.8 cm	109.00	174.00	98.00	156.00
6.	188 mm x 128 mm	3 x 18.8 cm	154.00	247.00	139.00	222.00
7.	188 mm x 260 mm	6 x 18.8 cm	324.00	517.00	291.00	466.00
8.	375 mm x 260 mm	6 x 37.5 cm	475.00	761.00	428.00	685.00

**TO BOOK YOUR ADVERTISEMENT PLEASE CONTACT RUTH PLACE**  
 03 5122 1961 or 0456 786 577

**Submission of Articles:**  
 Articles can be Emailed to: [cdneditorial@cdnews.com.au](mailto:cdneditorial@cdnews.com.au)  
 - Mailed to: PO Box 234, Churchill, 3842  
 OR put in our collection box at: the Co-Operating Churches.  
 Advertising enquiries can be emailed to: [cdnadvertising@cdnews.com.au](mailto:cdnadvertising@cdnews.com.au)

# Local Guides 1997

Local businesses and individual members of Churchill community who financially supported three local girl guides to attend the international meet at Douglas Scrub South Australia, will be pleased hear that the event was a success, and the three local girls Rebecca, Kristy and Tanya are extremely indebted to all who helped.

The meet was centralised around the Girl Guide fundamentals, friendship, team unity, and enjoyment. Guides from countries such as USA, Japan, Belgium, British Isles and New Zealand attended and became junior ambassadors for their nations.

Achievement Through Art" student exhibition at Latrobe Regional Gallery.

The artworks on display reflect the diverse range of student interests and the exemplary art curricula of schools across the state.

### Something new

February saw the start of a new Youth Group at the Cooperating Churches. Twelve young people competed in Celebrity Heads, shuffle the deck and strained their brains in the Dictionary Challenge. The highlight of the night was the newspaper hockey match, the closely fought game was eventually won 5-4.

### Hazelwood House Hostel opens

In April an Open Day was held for the Hazelwood House Hostel. Over 300 people were taken on conducted tours. What a great success. Churchill residents could at last view this wonderful and much needed resource.

On April 30 our first few residents arrived and new residents will be coming a few at a time. This will allow both the residents and staff to settle in easily. It is a very exciting time for the Hazelwood House Committee and we are very



proud of the wonderful facility.

### Adult fiction update

Once again we are in the midst of an extensive swap around of Adult fiction books. This means we are checking the borrowing rates for our Adult Fiction collection, and books that have seldom been borrowed are being sent to other branches of Latrobe Shire Community library service.

If you think you have "read out" our collection, come in over the next few weeks and see what is new!

### Famous author in Churchill

Kurnai College was extremely privileged to have a visit from John Marsden, author of the award winning "Tomorrow when the war began" series and one of Australia's most popular writers for young adults.

### Fire Brigade news

The brigade has experienced a period of significant change over the past few months, as

a result of brigade's long standing Captain Alan Long, resigning from that position.

Recalling some of the highlights experienced during his time as Captain Alan was quick to include the realisation of a permanent fire station in Philip Parade as a landmark for the brigade. As most readers will recall, since moving into the Churchill township the brigade was for many years housed in tin sheds on the corner of Switchback Road and the Midland Highway, with additional sheds being added as the brigade and its allocated equipment grew.

### Letter to the Editor

I was tired of spending the night on my own so I headed off to the Churchill Hotel, for a quiet dinner and a drink. We headed for the Bistro first, live music from a great three piece band saw us through a yummy meal. The band was great, not too loud, but just boppy enough to get a few up dancing as the night wore on. A bit later

we wandered down to the main bar to see what was happening, and we could not believe it! It seems they were raising money for the disabled. With a mechanical bull! Well believe me it is a lot harder than it looks!

What a night. My lazy Saturday night turned into more fun than I have had in years, and I still had change from \$20.

### Overnight success

A Bubbles and overnight stay was planned by some of the youngest members in the Guides in Churchill. Being such, the guides had a free time corner, with activities galore, bubbles in the make and a really neat trip to the local Churchill laundry. So thanks go to the Laundry lady for showing us how to sort our washing, and what the washing machines need

to know, so that the machine can make just the right amount of bubbles.

### Open garden weekend

The first "Open Gardens" will be held in Churchill this weekend. Nine private gardens are being opened to the public. Each garden has its own features and provides those attending a wide range of styles of gardening and ideas that could be incorporated into most home gardens.

### Churchill Angling Club

The Churchill Angling Club is organising a trip on the charter boat, the Southern Star, which operates out of Port Welshpool. Those members who are interested in this trip should book early as there are only ten spaces available.

## Nook and Cranny Book Exchange

Celebrating our 10th Christmas  
in our New Larger Store  
Seasons Greetings to all our valued customers

97 Buckley Street, Morwell



## 2022/23 Churchill Businesses Christmas Trading Hours



### Churchill

**Café Alfa**  
Closed from Saturday 24.12.2022  
Reopens Tuesday 3.01.2023

**Churchill Chemist Discount Centre**  
Christmas Eve: 9-2  
Christmas Day: closed  
Boxing Day: 10-2  
Tuesday 27th: 10-2  
Wed 28 - Fri 30: 9-6  
New Year's Eve: 9-2  
New Year's Day: closed  
Monday 2nd : closed

**Churchill Chinese restaurant**  
Christmas Eve: 12-2, 5-9.30  
Christmas Day: closed  
Boxing Day: 12-2, 5-9.30  
Tues 27-Fri 30: 12-2, 5-9.30  
New Year's Eve: 12-2, 5-9.30  
New Year's Day: 12-2, 5-9.30  
Monday 1st: 12-2, 5-9.30

**Churchill Fish and Chip shop**  
Call for opening times

**Churchill Discount Pharmacy**  
Christmas Eve: 9-5  
Christmas Day: closed  
Boxing Day: closed  
Sunday 27th: closed  
Monday 28th: closed  
New Year's Eve: 9-5  
New Year's Day: closed

**Churchill Hot Bread**  
Christmas Day: closed  
Boxing Day: closed  
Monday 27th: closed  
New Year's Day: closed  
Monday 2nd: closed

**Churchill Family Practice**  
Closed 24.12.2022  
Reopens 3.01.2023  
Churchill Neighbourhood House  
Closed from Friday 23rd December at 4pm  
Reopens Tuesday 3rd January at 9.30am

**Churchill Newsagency**  
Christmas Eve: 7-2  
Christmas Day: closed  
Boxing Day: closed  
Monday 27th: closed  
Monday 2nd: closed

**Churchill Noodle Bar**  
Christmas Eve: closed  
Christmas Day: closed  
Boxing Day: 11-2, 4-8.30  
Tuesday 27th: 11-2, 4-8.30  
New Year's Eve: 3-8.30  
New Year's Day: closed  
Monday 2nd: closed

**Churchill Private Dental Clinic**  
Christmas Eve: closed  
Christmas Day: closed  
Boxing Day: closed  
Tues 27-Wed 28: closed  
Thursday 29th: 9-6.30  
Fri 30th - Mon 2nd: closed

**Churchill Post Office**  
Christmas Eve: 9-12  
Christmas Day: closed  
Boxing Day: closed  
Tuesday 27th: closed  
Monday 28-Fri 30: 9-5  
New Year's Eve: 9-12  
New Year's Day: closed  
Monday 2nd: closed

**Hazelwood Health Centre**  
Christmas Eve: closed  
Christmas Day: closed  
Boxing Day: closed  
Tuesday 27th: closed  
New Year's Eve: closed  
New Year's Day: closed  
Monday 2nd: closed

**Lifeline**  
Closed from Tuesday 20.12.2022 at 3.45pm  
Reopens Monday 9.01.2023 at 9.30am

**New Churchill Motors**  
Closed from Friday 23.12.2022 at 5pm  
Reopens Monday 23.01.2023 at 8am

**Scissori**  
Closed from Friday 23.12.2022  
Reopens Thursday 5.01.2023

**Smart Saver**  
Christmas Eve: 9-5.30  
Christmas Day: closed  
Boxing Day: closed  
New Year's Eve: 9-5.30  
New Year's Day: closed  
Monday 2nd: closed

**Woolworths Supermarket**  
We will be open 7am to 10 pm as normal on all days except for -  
Closed Xmas Day  
8am to 9pm Boxing Day 26th  
8am to 9pm New years Day 1st

### Yinnar

**ARC**  
Closed from Sunday 18.12.2022 for three weeks.

**Café 3869**  
Closed 24.12.2022 - 8.01.2023 inclusive  
Reopens 9.01.2023

**Yinnar General Store**  
Closed 22.12.2022 - 30.01.2023

**Yinnar Pharmacy and Post Office**  
Christmas Eve: 9-12  
Christmas Day: closed  
Boxing Day: closed  
Tuesday 27th: closed  
Monday 28-Fri 30: 9-5  
New Year's Eve: 9-12  
New Year's Day: closed  
Monday 2nd: closed





## Chaplain

I wonder if the following quote and explanation will be immediately attributed to its source. What I mean is, we may sometimes read something and categorise it, dismiss it, or simply read it for what it is.

May I suggest that we do the latter with the following quote, and I will attribute it afterwards.

The quote, is "Believe more deeply. Hold your face up to the Light, even though for the moment you do not see."

Does it sound overtly Christian? Religious in general, or what?

The person who wrote this also explained, "One Sunday in autumn during my morning meditation, I glanced out the window at the ash tree in our front yard. At once I was overwhelmed by its magnificent, golden colour!"

The person went on to speak about their journey in relation to the effect of the seasons on trees being stripped of leaves to later be sprouting new blossoms, come spring. They spoke of having gone through a similar process.

If I now attribute this, will it challenge our thinking if we learn the person was



a member of Alcoholics Anonymous.

What this picks up on, is the changing seasons of life and particularly on coming through harsh times to being able to blossom again.

The person who wrote the quote, attributed their changing life and their continued 'blossoming', to God!

So, "believing more deeply" may make more sense now, as may "hold your face up to the light" With Christmas approaching, we see Jesus as 'the light of the world'.

The context is a person who had a change of life brought about by allowing Him in. That was the experience of the person I have referred to, making the quote and explanation basically Christian, all from a life rescued.

Which I think is the point.

Worth thinking about!

We enjoyed having Reverend Kathy Dalton to take our Anglican Holy Communion on the first Sunday of November. It was close to All Saints Day so Nyree talked to the children about saints and followed up with special craft activities.

Cathie Halliwell then took the Church services for the rest of the month, with All Age Worship service being first. Cathie's theme was authenticity. The service was based on the reading about the Pharisee and the tax collector going to the synagogue to pray. The difference between the two men's prayers is considerable. The Pharisee lauds himself as the best example of a life lived well. He is boastful and finger-pointing. The tax collector is humble, penitent and truly aware of his sins.

It is easy to finger point and think that the other is worse than yourself. However, we should all take a good look at our own behaviour and seek forgiveness.

Caring for God's creation

is a large part of what Christians are instructed to do by our Creator God.

It was with this thought that Zoos Victoria was approached to speak at a service on how they are preserving endangered species. Unfortunately a speaker was not available, but Cathie produced a service based around the wonder of creation and how we are called to appreciate and preserve it.

It is part of our faith journey to celebrate, nurture and care for God's creation including all the living species on planet Earth, whether they be in the wild, in our lives or in our soils, they all belong to God. Hymns, message and children's talk, prayers, activities and displays all came together to help us further increase our awareness and the diversity of God's creation and how we should play our part in caring for and preserving it. A retiring offering was held to give to the Zoo to support its research into preserving species work.

Even within our local government area there are many rare and endangered species.

### Threatened fauna Latrobe City

- 24 species of threatened birds
- 9 species of threatened mammals
- 4 species of threatened fish
- 3 species of threatened reptiles
- 2 species of threatened amphibians
- 8 species of threatened invertebrates
- 83 species of flora

To view the names of these creatures plus all the flora, you can visit Latrobe City Council web site. You will be amazed at how many there are in such a small part of Victoria. A huge thank you to Cathie for her hours of work in preparation.

### Garage Sale

The whole church, the shed and part of the grounds were recently filled with goodies for sale. Also available were jams, cakes, slices and the sausages in

bread. The hard work in setting up and clearing up was most appreciated as was the help on the day. The proceeds were unexpectedly good. Thank you to all those in the community who came to support the sale.

A few parishioners were able to attend the official opening of the Churchill Christian Fellowship located in the Hazelwood South Hall next to the soccer grounds on Tramway Road. We pray that the new location will provide the congregation with a home from which to worship and engage with the community.

Cathie has organised a special set of services with a difference for December. They will include some Bible passage study, carols, tables with activities or if they prefer to sit in normal seating. We hope you might like to come and experience this different way of having church and bring a friend.

We wish all our readers a happy and blessed peaceful Christmas and God's blessings for you and yours for the future.



**PEST CONTROL SERVICES**  
 I & G COMBRIDGE  
 HAZELWOOD NTH  
**5166 1822**  
 IAN & GLENDA  
 www.combridgepestcontrol.com.au

 <h2>Church Times</h2> <p><b>Co-Operating Churches of Churchill</b>        Sunday Services: 10.00am        Williams Avenue,        Churchill.        Tel: 5122 1480</p>	<p><b>Churchill Christian Fellowship</b>        Sunday: 3.00pm        760 Tramway Rd        ( next to the soccer ground)        Everyone welcome        0409 173 747</p>
<p><b>Boolarra/Yinnar Co-Operating Parish</b>  <b>Boolarra/Yinnar</b>        1st and 3rd Sunday        10am        Christ Church Tarwin St.        Boolarra</p>	<p><b>Churchill/Morwell Catholic Parishes</b>        Tel: 5134 2849        Fr James Fernandez  <b>Saturday 5.00pm</b> St Vincent's, Morwell. <b>Sunday 9.00am</b> Lumen Christi, Churchill. <b>Sunday 10.30am</b> Sacred Heart, Morwell.        Every 4th Sunday alternates Yinnar/Boolarra.</p>



# Church News

## Churchill Christian Fellowship



After many setbacks and delays, the members of Churchill Christian Fellowship were finally able to celebrate the opening of their new church home on Saturday night November 19. Work on the old Hazelwood South Hall was by no means finished but guests were able to wander through the building and read little "Planning and Dreaming" signs in several places, explaining things that the group still hopes to do.

Almost 50 people attended the opening night, including Councillor Melissa Ferguson, representing Latrobe Council, community representatives and well-wishers from Warragul, Moe and Morwell churches.

The programme included three musical items, which were well received.

Linda Whitney gave a brief but thorough recap of the 39 year history of Churchill Christian Fellowship. Lynn Fowler presented a talk about the process of getting the licence from the Department of Environment, Land, Water and Planning, as well as the seven-month saga to get electricity working in the building. She also explained a bit about King of Glory Ministries International, which will be sharing the building with Churchill Christian Fellowship.

Steve McNeilly spoke about the vision of Churchill Christian Fellowship and

the church's desire to be a positive asset to the local community.

Opportunity was given for comments or memories and a number of people came forward with interesting and encouraging remarks.

Pastor Glenda Noordam closed the formalities with a dedicatory prayer.

Refreshments were offered at the beginning of the evening and supper was provided afterwards.

Sunday services at 3pm and various other meetings are, of course, now being held in this H.S. Hall, 760 Tramway Rd, Churchill.

Visitors always welcome. Find us online or call Steve on 0409 173 747.

## Christmas service times

**Lumen Christi**  
Christmas Eve at 6pm at Yinnar.  
Christmas Day 9 am at Churchill.

**Co-Operating Churches in Churchill, Boolarra, Yinnar**  
Saturday December 17 - Community Carols at Churchill, 6pm BBQ, 7pm start.

**T h u r s d a y**

December 22 - Blue Christmas Boolarra 7.30pm.  
S a t u r d a y  
December 24 - Crib Service 6.30pm Churchill.

Anglican HC Boolarra 8.30pm.  
Sunday December 25 - Churchill 10am Service of the Word 10am Boolarra Family Service.



**Christian Fellowship**  
Friday December 23 at 6pm. Christmas Celebration. No service Christmas Day. To be confirmed.

## Churchill CHATTER

**Where is the sunshine?**  
What unseasonable, unpredictable weather we have been having. The rain gauge has been collecting water almost every day during the month of November. Severe winds have been causing damage throughout the district with fallen branches and trees.

\*\*\*\*\*

Day during November. The Club needs new members to increase the number of players for the coming summer season. Contact Bill Brown phone 0444 539 922 for further information.

\*\*\*\*\*

residential estate on the south west end of town. Access to this estate is from McCarthy Street. Two dwellings are being built, with more to come. Emerald Court is the name of the new road in the estate.

\*\*\*\*\*

**Building damage**  
Churchill Fire Brigade attended to an unusual accident with a truck and building at the front of the vacant IGA building this past month. The verandah of the building has now been totally demolished after being hit by the truck.

\*\*\*\*\*

**Under new management**  
Welcome to the new owners and management of the Churchill Post Office. It is good to know the Post Office is a bright and welcome place to do business.

\*\*\*\*\*

**Football coaches**  
Churchill Cougars senior side will be coached this year by Jordan Fenech. The Churchill Reserves team will be coached again by Brian Grimes who will be joined by Ryan Harvey. The Thirds will be led by first time coach and senior player Jack Hasell.

\*\*\*\*\*

**Rose Garden Festival**  
A very successful 30th Morwell Rose Garden Festival was held during November. Over 4,000 roses were blooming for the occasion giving locals and other visitors an interesting visit. Among the highlights of the festival was the return of crowd favourite and ABC Gardening Australia host Costa Georgiadis.

\*\*\*\*\*

**Hazelwood South Hall**  
After lying empty for a number of years, Hazelwood South Hall is now occupied again.

Churchill Christian Fellowship has done lots of cleaning and building restoration works to make the Hall useable and has a five year lease. The Hall was officially opened on Saturday November 19.

For more information about Churchill Christian Fellowship go to [www.churchillchristianfellowship.com](http://www.churchillchristianfellowship.com)

\*\*\*\*\*

**Thought for the month**  
**Two things that define you,**  
Your patience when you have nothing and your attitude when you have everything.

\*\*\*\*\*

**Churchill Bowls Club**  
The Bowls club held a successful Come and Try

**More New Housing**  
Travellers on Monash Way may see the first houses being constructed in the new

**Christmas Greetings**  
From the volunteers who help produce Churchill News each month, we send to our readers all good wishes for a Merry Christmas and Happy New Year. May all your happy dreams come true.

We look forward to you receiving our next edition in February 2023.

\*\*\*\*\*



## Seasons Greetings from Churchill & District Community Association

CDCA wishes all residents, their families and friends a safe and happy festive season, a wonderful New Year and good health for 2023

Contact CDCA via our website: [www.cdca.org.au](http://www.cdca.org.au)/contact us or message us on our Facebook page - search for Churchill District Community Association or write to us at PO Box 191, Churchill 3842

**Next CDCA meeting:** Thursday, February 9, 2023, 7.00 pm, Churchill Town Hall (downstairs), Philip Parade, Churchill



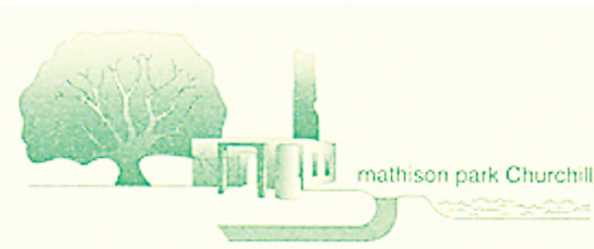
# PLACE YOUR AD HERE

SEND YOUR MESSAGE ALL OVER THE LOCAL DISTRICT

5122 1961

CHURCHILL & DISTRICT NEWS  
*"Connecting Your Community"*

# Works at Mathison Park



How wet and cold it has been and how the grass has grown. It has been too wet to get vehicles in to do much these last two months. However November saw a group of hardy willing volunteers spread some more fine gravel on the paths to help stop the sludge.

The new bridges for the boardwalk have been done. We thank the Council for their efficient carrying out of this project to enhance the facilities.

A new disabled table has been installed on the concrete block at the large barbeque shelter. The Gippsland Interchange crew also helped here. We say a huge thank you to the Hands On Learning class at Kurnai College who have done a great job.

The Gippsland Interchange also helped to further stop the sludge on

the wet paths. Some doggy bags were also installed.

We have been given a community grant from Latrobe City Council for a new pathway to link the concrete path to Kurnai through the bush to link up with the conifer collection path. We extend our grateful thanks to the Council for their grant to further develop the park.

We were thrilled to host the Lion's Community Family and Fishing Fun Day.

The committee and friends group celebrated the end of a working year with dinner at the Yinnar Pub. Thank you to all our park volunteers for your wonderful dedicated work to improve, maintain and develop the park this year.

Enjoy the park over the holiday season and please respect the facilities and the other users so all may have a happy time.



**Yinnar Pharmacy and Post Office** Yinnar Pharmacy is proudly serving customers of Yinnar, Yinnar South, Boolarra and surrounding areas.



**Our services include:**

- Dispensing scripts at discounted prices
- Free medication packing
- Free pharmacist's counselling
- National Diabetes Service Scheme's Services
- A wide range of products
- Monthly specials and more

42 Main Street, Yinnar, Vic 3869  
Ph: 5163 1209 Fax: 5163 1477  
Email: yinnarpharmacylo@outlook.com

Yinnar Pharmacy and Post Office



# Darren Chester

Wishing you a Merry Christmas and a healthy, happy New Year.





## We will be watching ...



**HVP Plantations** will detect arson this summer with patrol vehicles, aircraft, drones and cameras watching for suspicious activity.

**HVP Plantations ...**

- Part of our community
- 40,000 ha of native vegetation
- 82,000 ha of plantations

Our home is your home and we are proud to be a part of Gippsland, which is why we take preventing and suppressing wildfires seriously.

Report any suspicious behaviour to Crime Stoppers on **1800 333 000**

To report a fire Call triple zero **000**

# Where We Live

Most of us drive past it regularly, some of us walk past it often, and many of us subconsciously look for it when we are driving back into town.

What is IT??? Of course it is Churchill's Town Symbol. Or, as often referred to, "The Cigar." On December 21 this year our Cigar will be 55 years old.

Standing 32 metres high, having a diameter of 1.8 metres at the centre and 1.2 metres at the base, this unique structure was commissioned by the Ministry of Housing in 1967, and was intended to be the focal point of a large city.

At the time of its erection, there was a great hue and cry by the local community, saying that the money could have been better spent on other community projects, such as a Public Hall, or Recreation Centre.

Constructed of galvanised steel with a skin of copper anodised aluminium, and lit internally, the cost is believed to have been \$30,000.

The original internal lighting which lit the Symbol to its full height unfortunately proved very attractive to nesting birds. Some long-term residents still refer to the "Bird's Nest" because these nests frequently had to be removed

in order for the lights to keep working.

An upgrade to fluorescent light fittings proved to be even more popular with the birds, so external lights were installed. Four were placed around the structure facing upwards and, when working, only lit the Symbol to the half-way mark where the structure begins to taper towards its top.

External lights have proved easier to maintain and repair, but due to their height, a cherry picker is still required to access the light fittings.

The lights still fail too often, probably because now the wiring and fittings are exposed to all weathers.

In the last couple of years, at Christmas time, red and green globes have been temporarily installed by Council in keeping with other festive decorations.

Churchill & District Community Association (CDCA) wrote to Latrobe City Council in February 2022 asking that internal lighting be installed to the full height as was originally designed. Investigation by Council workers found that the old internal lights were no longer fit for purpose and a completely new lighting system is required.

Additionally, CDCA requested that Council

formally adopt the name "Churchill Town Symbol" as was the original intent, evidenced by the architect's specifications and that Council submit this name to the Office of Geographic Names requesting it be a registered place name and included in VICNAMES.

CDCA also asked for signage to be placed at the base of the Churchill Town Symbol to inform the community and visitors of its purpose and history.

Many locals today think it was intentionally designed to look like a cigar in honour of Winston Churchill and its proper name is "The Cigar".

In fact, "The Big Cigar" is even listed as one of Australia's "Big Things" and can be found on Wikipedia... so that must be right!

Whether you refer to it as "Town Symbol" or "The Cigar" it's certainly a landmark unique to Churchill.

Footnote: There was a monument in honour of Winston Churchill in town, it was the Winston Churchill Memorial Fountain and was located in the original West Place Shopping Centre courtyard.

The fountain was removed when West Place was redeveloped as it had fallen into disrepair and was scrapped.

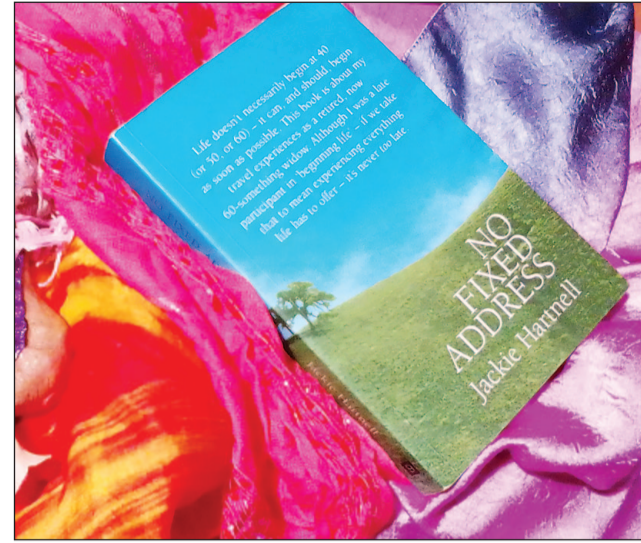
# St Matts Op Shop

Why not come out to St Matt's Op Shop Yinnar and buy your Christmas presents?

Many people came today and stocked up for friends and relatives, (one customer has purchased all her presents for the Jinks' Christmas from St Matt's).

This week we will have all our decorations and Christmas bits and pieces out for sale.

Come and enjoy the atmosphere and purchase some fun for your tree and home. Watch out for Rudolph on the way!



Christmas presents purchased from St Matt's Op Shop Yinnar

## Churchill's own family electrical business

Seasons Greetings to all our valued customers



- DOMESTIC & COMMERCIAL
- NEW INSTALLATIONS & ADDITIONS
- MAINTENANCE
- SOLAR MAINTENANCE
- SMALL JOBS WELCOME
- AFTER HOURS SERVICE
- PENSIONER DISCOUNTS

Call Eric & Sue  
0438 253 882

Servicing Latrobe Valley & surrounds

**watts smart**  
ELECTRICAL PTY LTD  
REC No. 20746

# Ride on Mower - Lawn Mower - Chainsaw

## Need servicing call NOW !!

- Workshop Booking **Now Available**
- Pick Up and Delivery option
- Qualified Service Technicians
- Authorized Service and Warranty Agents
- Replacement Engines



Your Power Equipment Specialist

## Central Gippsland Mowers

533 PRINCES DRIVE, MORWELL VIC 3840

PH: 03 5134 8899

www.gippsland-mowers.com.au





# Latrobe Community Health Service

More than 8,000 Latrobe Valley children and their families have benefited from affordable children's

health services from Latrobe Community Health Service over the past ten years. Latrobe Community

Health Service is celebrating the 10th anniversary of its dedicated Paediatric and Youth Hub, established to give babies and children the best possible start to life.

Since its inception in 2012, the Paediatric and Youth Hub has grown from delivering one service for children aged 0-7, to nine different programs that encompass children's allied health, dietetics, continence, nursing, and outreach in schools and kindergartens.

"We created our children's service after recognising many families who had concerns about their child's development either had to pay large fees for private therapy or go without help," CEO Ben Leigh said.

"In 2012, many Latrobe Valley children with mild-to-moderate delays were missing out on therapy."

After securing state government funding, the LCHS children's service began.

The team – consisting of allied health assistants,

speech pathologists, and occupational therapists – saw its first clients in early 2013.

To this day, children and their families can access group or one-on-one therapy through this multidisciplinary service, which aims to help children communicate, regulate their senses, and use their fine and gross motor skills as expected for their age.

Over the years, the team has welcomed new health professionals and services into the fold.

Latrobe Community Health Service now delivers:

- nursing for children in out-of-home care
- an outreach service for expectant mums and their newborns
- health education in community settings
- nursing in primary schools
- children's dietetics
- children's physiotherapy
- children's occupational therapy
- children's speech therapy
- children's continence nursing
- health and wellbeing education for schools and kindergartens across Gippsland, to help educators and families promote healthy children's development.

"We are so excited to be celebrating ten years of delivering much-needed services for Latrobe Valley children and their families," Mr Leigh said. "Thousands of children are growing up with the skills they need to live, learn and play like other kids their age, and we are proud to have played a role in making this possible."



Above: The original LCHS Children's Service team reunites after ten years. Below: Latrobe Community Health Service Manager Paediatric and Youth Hub Selina Northover cuts the 10th birthday cake



## TUBBY'S TIMBER & TREE SERVICE

### 0427 189 173

TUBBY'S TIMBER AND TREE SERVICE IS A PROFESSIONAL, FAMILY RUN BUSINESS BASED IN GIPPSLAND. WITH OVER 15 YEARS EXPERIENCE LUKE PROVIDES A WIDE RANGE OF TREE SERVICES WITH COMPLETE PRECISION AND CARE.

#### SERVICES

- Trimming and shaping
- Hazardous limbs removal
- Complete tree removal
- Storm damage clean ups
- Lot cleaning
- Stump grinding
- Earth moving equipment
- Wood chipping

CALL LUKE FOR A FREE QUOTE

SERVICING ALL YOUR ABORICULTURE NEEDS ACROSS GIPPSLAND & SOUTH EAST MELBOURNE

✉ tubbystrees@outlook.com.au

f Tubby's Timber and Tree Service

## Tyrepower Morwell

ABN 48 612 263 591

"Merry Christmas and Happy New Year to all our Valued Customers and Happy Motoring"

Service and Advice gained over 50 years for your family.

Get your car ready for Christmas!

42 VESTAN DRIVE, MORWELL TELEPHONE 5134 1388

## Chemist

### DISCOUNT Centre

The Management and Staff of Chemist Discount Centre Churchill would like to wish all their valued customers a very Merry Christmas and Best Wishes for 2023

Shop 7, West Place Shopping Centre, Churchill VIC 3842 T: (03) 5122 1390



# STAMP MATTERS- A NEW EXPERIENCE



**A dot on the map**  
 I would like to wish my readers a very Merry Christmas and an extremely prosperous New Year for 2023. Above all, it is to be hoped that this coming year will be unremarkable, given the turmoil of the past few years. This month I am going to write about one of those far-away places with strange sounding names, a place with a long history and tinged with the allure of romance. The place is Zanzibar.  
 Zanzibar is an archipelago off the coast of East Africa, close to the cradle of civilisation. Archaeologists tell us it has been settled for over 20,000 years. Its name translates from the Swahili language to 'The land of the Black People,' referring to the very dark skin of the local people. The ancient Greeks had heard of it, but it remained hidden from European eyes for centuries. Over that time, it developed into an important trading hub for African, Arab and Indian sea-traders where gold and ivory went to Asia in return

for Indian cloth, spices from the East Indies and other goods from the Orient.  
 Through inter-marriage between wintering Arab traders and daughters of rich East African families, the Islamic religion was well entrenched by the time Europeans arrived. As well, the islands were ideal for the growing of spices and so they had a widely sought-after local product to trade. Indeed, they were the first to be called the Spice Islands, long before the Dutch East Indies. The first Europeans to arrive were the Portuguese in 1498, with Vasco da Gama in command and the Portuguese set up a colony there, exchanging tribute from the local Sultan for peace. It remained an outpost for them for almost two hundred years, ruled over by local Arabs until it was taken over by the Sultan of Oman. Arab rule saw the introduction of the slave trade which flourished until the English took over the islands as a protectorate to abolish the trade.  
 It remained part of the

British Empire until 1963 when self-government was introduced but after a short period when a Socialist revolt took place and then failed, it became part of Tanganyika. Today, its' main economic income is from tourism, which is slowly growing, but climate change is stifling that growth as the seawater invades the freshwater tables of the islands. It was still a mecca for deep-water fishermen until the onset of COVID 19 which stopped the pastime cold. One piece of trivia for those who enjoy such things; people drive on the left hand side of the road as we do. It is a tropical island and has two wet seasons caused by the advance and retreat of a monsoon. Zanzibar's postal system was first controlled from India, and Indian stamps overprinted locally were the first used. In the 1930s they produced their own stamps, usually showing the local sultan as the motif. Today they use the stamps of Tanzania.

## Mobility And More Moe

# ADJUSTABLE BED PACKAGES



Lifestyle and healthcare beds

Large range of mattresses



Call in and see Chris and Noddy

**Open Saturdays 9 am - noon**

**03 5127 2099**  
**32 George Street, Moe, Vic. 3825**  
[www.mobilityandmore.com.au](http://www.mobilityandmore.com.au)

COME AND CELEBRATE THIS YEAR'S

# Carols by Candlelight

brought to you by

The Combined Churches of Churchill

## Saturday, December 17

Held outside at the Co-Operating Churches, 1 Williams Ave, Churchill

*BBQ at 6.00pm. Gold coin donation.  
Proceeds to local charities.*

**Carol singing, items and the Christmas story from 7.00pm**

If the weather is inclement, Carols will be held inside the church.

*Supplied* - carols booklets and some candles and holders.  
Bring a chair, or picnic rug, your carols booklet from the Latrobe Express and some money for the collection to go to local charities.

**SANTA will make an appearance during the evening**

Proudly supported by



Churchill and District Lions Club

*The Combined Churches of Churchill  
(Lumen Christi, Co-Operating Churches in  
Churchill and Churchill Christian Fellowship)*

CHURCHILL & DISTRICT NEWS

*"Connecting Your Community"*



Churchill Fire Brigade



**Further information? Contact - Ruth 0456 786 577 or Sue 0418 357 673**

# Book Review

## “The Mountains Sing”

By Nguyen Phan Que Mai 2020

Nguyen was born in Vietnam in 1973 and witnessed the aftermath of the war. Prior to winning a scholarship

then walked back to Hanoi to find that their home had been completely destroyed.

Her grandmother then tells Huong

One uncle has lost both his legs and cannot cope without alcohol, another is the victim of Agent Orange and her mother is so psychologically damaged that their relationship is threatened.

She has failed to find Huong’s father and is riddled with guilt and sadness.

The family then make contact with a long-lost brother in Saigon and visit him while he is dying to discover that he has been fighting with the South.

Through all this Huong continues her education and falls in love with Tan, with the family eventually blessing their relationship.

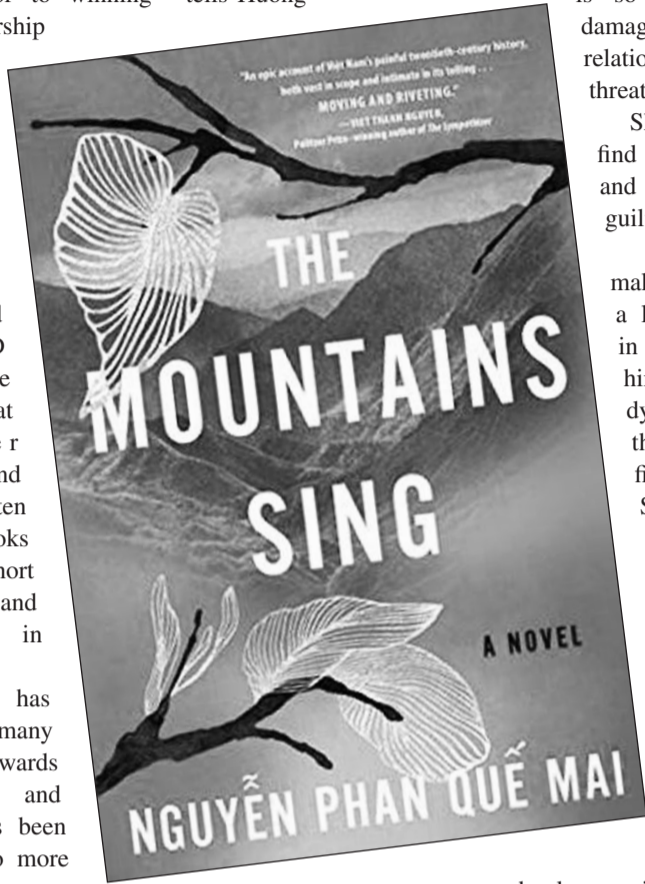
This book received a mixed reaction, some finding the names of the many characters difficult.

However the general opinion was that the book was well written and engaged the reader with both the contemporary story and the history of Vietnam through the eyes of one family.

The horrors of the war have been well documented and it was interesting to get a perspective of what it was like for those fighting with the Viet Cong and the grief of finding one of their own fighting with the Americans.

The book demonstrated that humans share the same joys and sadness regardless of where we come from.

While the book really tells two parallel stories it all dovetails neatly at the end.



to go to university in Australia she had been a street seller and a farmer.

She has completed her PhD in Creative Writing at Lancaster University and has written many books of poetry, short fiction and non-fiction in Vietnamese.

She has received many literary awards in Vietnam and her work has been translated into more than ten languages.

“The Mountains Sing” which is her debut novel and the first she has written in English, has received many honours.

The story begins in Hanoi in 2012 with Huong (Guava) remembering her late grandmother Dieu Lan.

We then go to Hanoi in the early seventies where twelve-year-old Huong is living with her grandmother because her father is fighting in the war and her doctor mother has gone to look for him.

Hanoi is being savagely bombed and living conditions are very difficult so she and her grandmother walk forty-one kilometers to a village in the mountains where they will be safe.

They remained there until the war had ended and

the story of her family.

She had been born into one of the wealthiest families in the province and they employed many local workers who were well treated.

One day a fortune teller comes to the farm and predicts that Dieu Lan will have a very difficult life.

The story then alternates between her story and the contemporary story of events in Hanoi.

Dieu Lan’s story encompasses the history of Vietnam from the French through World War Two and the Japanese occupation, to the Viet Minh and finally the Vietnam War.

While she is telling her story the war ends and family members are returning.



# Keep local businesses thriving – Shop Local

# Rotary



DINNER MEETINGS:

**1st, 3rd and 5th Mondays  
6.30pm - 8.00pm**

MORWELL BOWLING CLUB  
**NEW MEMBERS WELCOME**

humanity  
in motion

Contact: Ray Beebe,  
Secretary  
0408 178 261

## Hazelwood Rotary Club



## Victoria Cross Bistro

Morwell RSL

# OPEN 7 Days

LUNCH and DINNER

UPDATED MENU



Phone  
5134 2455

# THE BADGERS

will be playing  
**FRIDAY  
DECEMBER 23**

## New Churchill Motors

Lot 8, Phillip Parade,  
Churchill, Vic. 3840

Tel: 5122 1380

www.repcoservice.com.au



Specializing in General repairs and Servicing of 4WD and Passenger Vehicles including:-

- \* Brake and Clutch Machining and Replacement
- \* Cylinder head and Flywheel machining
- \* Steering and Suspension repairs
- \* Tyre fitting and balancing
- \* Log book servicing and general repairs
- \* Specialist Diagnostic equipment for current models

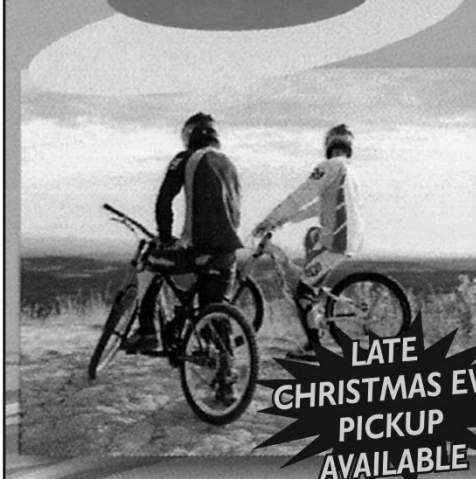


Like us on Facebook

All repairs covered by Repco Authorized Service Nationwide Warranty



# S&J CYCLES



2022

**GIANT Bikes**  
STOCK ARRIVING WEEKLY

35 Tarwin Street,  
Morwell

Phone

**5134 3891**

Fax 5134 5503

Email: sjcycles@netspace.net.au

# Hazelwood Cemetery



### How people are remembered and not forgotten (a series continued)

By Leo Billington

In this December edition of the Churchill & District News, four family graves are selected to highlight how people are remembered and hopefully, not forgotten.

Donald Waldon, Morwell, was born in Geelong, in 1857. At the age of eighteen he selected land at Morwell (1875). After a year's experience of farming he started his own farm at Morwell, dairying (mainly butter making) and horse-breeding on his property named 'Highfields'.

Just on 15 years later, Donald passed away at home on April 11, 1890, only a few weeks after his marriage. Donald's nephew,

William Waldon, with his wife, Christina Jessie, raised a family of eight children. A daughter, Eva (Eddie), is buried in the Hazelwood Cemetery. Furthermore, according to cemetery records, Eddie shares the same grave with her brother Ernest and father, William. Close by, are another six unmarked graves for members of the Waldon family.

The 'Highfields' property had been taken over by an expanding Morwell open cut although a teardrop icon from an aerial photograph gives an approximate location.

As regards William, in partnership with Mr William Kemp, he founded the "Morwell Advertiser". However, shortly after he disposed of his share although he frequently contributed articles to the

paper.

The Morwell and Mirboo Gazette was established on October 6, 1885 with Charles Pitt Nind as its editor. This journal later became The Advertiser, which was first published at the rear of John Rintoull's shop in Commercial Road by William Kemp and his brother-in-law, William Secombe. This short-lived partnership was officially dissolved on January 29, 1887. William Waldon took over Secombe's place and the business then became Waldon and Kemp in early 1887.

Bert Turnley soon after took over the local paper in 1888, only to be later sold again to another partnership, Guest and Stephens, before Samuel Gill took on the business then known as The Gazette.

Ironically, Charles Pitt Nind moved away from Morwell shortly after the death of his wife, Harriette on October 29, 1889, aged 35 years. According to the Traralgon Record, (November 1, 1889), "the deceased lady was buried in the Hazelwood Cemetery, when a large number of friends attended to pay the last tribute of esteem and respect. The cortege included 32 vehicles and a large concourse of horsemen."



Today, Harriette's gravesite and headstone have suffered from a lack of care and attention. Unfortunately, the inscription is difficult to read.

Arthur John Jope was aged nine years and six months when he passed away on March 15, 1888. He was one of four children of Richard Jope, a State School teacher residing at Morwell. Arthur was eight years old when he started at the school in 1887. His other siblings also enrolled at the school were Ann, Gertrude and Norman.

Arthur died about half an hour after complaining of a sore throat. He died before Doctor Montgomery's arrival. He examined the body and questioned the parents. He was of opinion the child died of diphtheria. A verdict in accordance with medical testimony was returned. (Traralgon Record March 20, 1888).

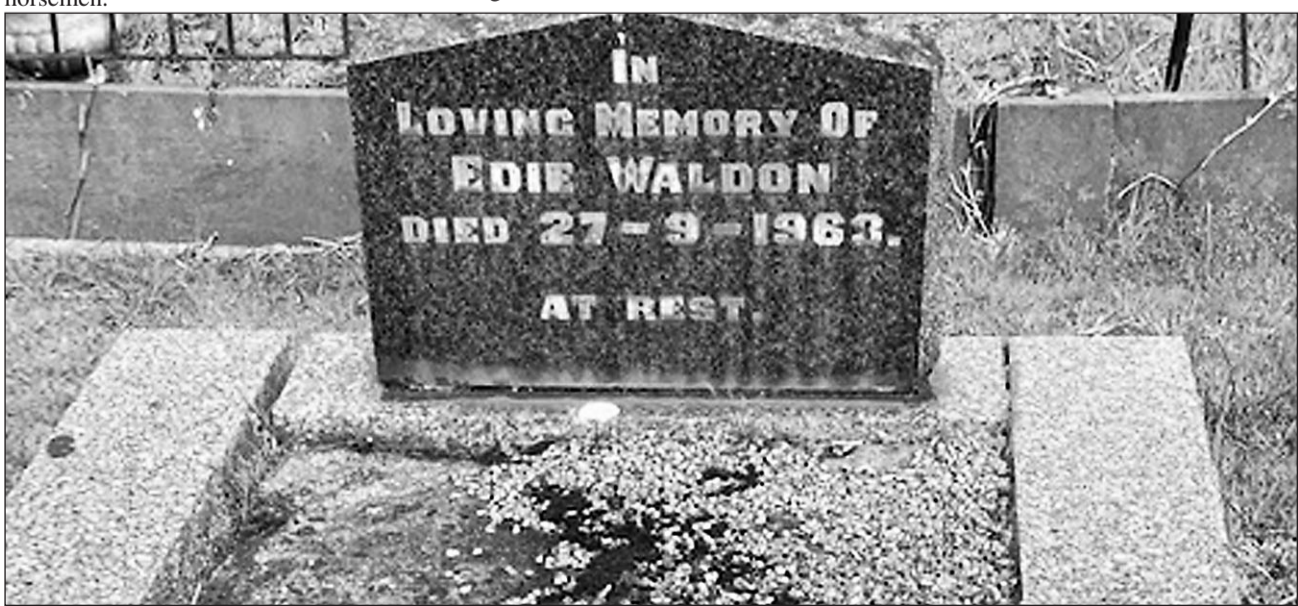
As mentioned above, now Arthur's gravesite and

headstone, laying on its side, have suffered from a serious lack of care and attention. Unfortunately, the inscription is difficult to read, nonetheless, a surname is discernible if one looks closely.

Finally, a quick look at an unmarked grave for Mr Thomas Theobald. He passed away on October 25, 1906. Thomas and his wife, Jane Ann, embarked on their trip to Australia in 1858. The journey took about 63 days and they lived in Richmond for a short while before trying their luck on goldfields at Woods Point and Aberfeldy. They then managed the Commercial Hotel in Heyfield before locating to Morwell in 1880 where they owned and operated a butchering business. Soon business expanded and a slaughter yard was later established in Station Street, now Princes Drive, near Latrobe Road. For this type of business, a new location was chosen on

the Ridge Road, east of the Morwell town boundary in June 1887.

Thomas Theobald's business was, over at least seven years, expanding. Thomas sold the butchering business to Thomas Kleine and he retired to a small property at Morwell Bridge. Jane and Thomas are buried in the same unmarked grave at Hazelwood. They died about six months apart; Jane in June 1906 and Thomas in October 1906. A son, William, is also buried close by in an unmarked grave.



Like us... Churchill and District News

**Smart Saver** Discount Variety Store  
**OPEN 7 DAYS**  
**CHRISTMAS GIFTWARE and TOYS**  
 Come and see our much wider range of Christmas gifts, all at an excellent price.  
**Phone 5122 2667**  
 Shop 3, Hazelwood Village Shopping Centre, Churchill

# Friends of Morwell National Park

## November Activity Report

For this month's activity we had Tamara, Mike, Cathy, Gordon, Ken, Rose, Caitlin and Darren. We had apologies from Anita, Beryl, Graeme, Joelle and Matt.

The forecast was for rain, so this was a factor in the planning for the day. The main task was to complete the annual Butterfly Orchid survey. Tamara had brought the record sheets and with the wet conditions the plan was to survey only some of the five sites. With one site spanning the creek and another requiring crossing the seasonal creek, these sites

were going to be difficult to safely survey.

The group met in the carpark and observed a wallaby grazing up on the hill. A koala was also found above the picnic area. The group walked into the Fosters Gully track. Caitlin and Darren went along the track cutting back foliage that had grown into the track. The rest of the team worked up to the first plot and surveyed the Butterfly Orchids within the plot. In total three plots were surveyed over the morning.

Following the wet winter and spring, the butterfly orchids are growing well.

There were more orchids found at each site and they are generally larger plants.

Over the morning's work the groups escaped with only a few showers wetting our heads. When more rain threatened it was a good time to finish for the day.

## December Activity

Sunday December 18, 10.00am - Kerry Road

The group will meet in the Kerry Road car park to collect seed that will be used for plantings in future activities. You will need to bring clothing and footwear suitable for the weather conditions on the day.



## Neighbourhood Watch Latrobe Inc. and Churchill Town Safety Group

### Pot holes and road conditions

Over the past couple of months, we have had some bad weather that has been causing a lot of road damage including pot holes.

These pot holes can amount to a fair bit of damage to your car tyres and wheel rims that would cost a fair bit of money to replace.

A lot of cars now have a much smaller spare wheel than the original one, and are only meant to be used until the main wheel can be replaced or repaired.

Given the fact that your local council and Vic Roads would be flat out at this time of year, you can assist in reporting the road damage when you see it using the

"Snap Send Solve" app on your phone. Simply open the app, take a photo of the hazard, confirm your position and add an address with the details and send it off.

The "Snap Send Solve" people will work out, who is responsible for the repair, and forward it on to the necessary people.

A good photo will show if the damage requires urgent attention or not.

The more we keep an eye out for our community, the better things will be for all of us.

Keep safe and ask not what your community can do for you, but what you can do for your community.

**Your friendly local Taxi company**  
servicing Churchill and surrounding areas



- Wheelchair and Party vehicle available -  
Special rates to Melbourne and for goods moving.

## Correction

**Re Yinnar Historical Shed Official Opening.**

*The price of the lining material of the new shed was funded by the Mirboo North Community Co-Operative and was installed by a local volunteer with help from the Historical Society members.*



**FOR EMERGENCIES, RING 000**  
**FOR POLICE ASSISTANCE, RING 131 444**



Police advise members of the public that, if you require police assistance, call 000. The police communications operator will be able to assess your need and either send a police vehicle, relay a message or find out when the police station will be attended.

# Plants in my Garden

By Mike Beamish

Species: *Goodia lotifolia*.

Family: Fabaceae.

## Derivation:

*Goodia*: Named after Peter Good, a gardener at Kew, who accompanied Robert Brown on Flinders' voyage to Australia and died in Sydney in 1803.

*lotifolia*: From Latin *lotus*, the Lotus genus, and *folium*, meaning leaf. Thus, this species has leaves like a Lotus plant.

## Common Name:

Golden-tip, Clover Tree.

## Distribution:

A common understorey shrub or small tree in forests, usually in moist, shady locations, but occasionally in drier sites, along the coast and ranges of Queensland, NSW, Victoria and Tasmania.

Records of this species in South Australia and Western Australia seem to have now been attributed to *G. medicaginea*, but some taxonomists do not recognise the latter species.

## Description:

Up to 5m tall and broad, often suckering, sometimes with reddish branches. Leaves are trifoliolate, like large clover leaves and the leaflets are ovate to obovate, up to 35mm long and 20mm wide, bluish to grey-green on top and paler underneath. Flowers occur over winter and spring

and are a typical pea-flower shape about 15mm across in terminal or leaf-opposed racemes, bright yellow with a reddish blotch at the base of the standard petal. These form into 3cm long brown pods, which will spring open in warm weather to eject the ripe seeds away from the parent plant.

**Opinion:** This species has led a chequered life in my garden. I cannot remember the provenance of the original plant, whether I obtained it from a nursery or grew it myself from seed or cuttings obtained locally, but I remember that it was a bit of a nuisance, suckering madly around the garden bed. Eventually, the area became so overgrown I pulled it all out and started over. The original plant was cut down to a stump, thinking it would re-sprout or continue suckering, but no, it promptly carked it and disappeared from the garden.

Another characteristic of this species is its prolific flowering and consequent development of abundant seed pods, which then commence firing their ripe seeds all over the place during the warm days of summer. Hence, after a couple of seasons there must be a pretty substantial build-up of seed stored in the soil

and mulch. Not surprisingly, a couple of years ago some seedlings started to appear around the original location, as well as in the vegetable garden on the other side of the adjoining fence and in the pots in my nursery area, also on the other side of the fence. Some of these I've dug up and transplanted into pots, others just fade away on their own, but one I've left to its own devices roughly in the area of the original and this one has sprung up into a leggy shrub about 3m tall and is now flowering full tilt. No doubt in a month or two, there will be more seeds pinging off the fence!

The Australian Plants Society Latrobe Valley Group hosts monthly activities, excursions and / or meetings. Interested persons are welcome to join in, please contact Mike for more information, email [mcandcjb@gmail.com](mailto:mcandcjb@gmail.com) or phone 0447 452 755.

Sources: Sharr – WA Plant Names and their Meanings

Corrick & Fuhrer – Wildflowers of Victoria

Elliot and Jones – Encyclopaedia of Australian Plants, Volume 4

Online – VicFlora: Flora of Victoria, Electronic Flora of South Australia and FloraBase: the WA Flora.



LATROBE CITY COUNCILLORS  
& STAFF EXTEND

# Season's Greetings

LATROBE CITY COUNCIL WILL BE RUNNING LIMITED SERVICES DURING THE FESTIVE SEASON

## SERVICE CENTRES & LIBRARIES

Latrobe City Council corporate headquarters and libraries will close on Friday 23 December and reopen at 8.30am on Tuesday 3 January 2023.

## LATROBE LEISURE

Visit [www.latrobe.vic.gov.au/leisure](http://www.latrobe.vic.gov.au/leisure)

### Indoor Leisure Centres

Visit [www.latrobe.vic.gov.au/leisure](http://www.latrobe.vic.gov.au/leisure) or contact your local Leisure Centre for opening hours over the festive season.

### Outdoor Pools

Outdoor pools are closed on Christmas Day, Boxing Day and New Year's Day. Normal operating hours apply all other days.

Visit [www.latrobe.vic.gov.au/outdoorpools](http://www.latrobe.vic.gov.au/outdoorpools)

## VISITOR INFORMATION CENTRE

Located inside Gippsland Performing Arts Centre, the Visitor Information Centre is open 7 days a week from 10am to 4pm except for Christmas Day.

The centre stocks a range of local maps and brochures as well as information on other regions throughout Victoria. They also offer Australian and locally made gifts.

Phone 1800 621 409  
[www.visitlatrobe.vic.gov.au](http://www.visitlatrobe.vic.gov.au)

## EARLY LEARNING CENTRES

Traralgon, Moe and Carinya Early Learning Centres will close at 12.30pm on Friday 23 December and reopen on Monday 16 January 2022 at 7.30am.

## LOST OR STRAY ANIMALS

If you find a lost or stray animal, please call the emergency after hours number 1300 367 700. Normal pound operating hours will resume Tuesday 4 January 2022.

For injured wildlife, please contact Wildlife Victoria on 03 8400 7300.

## IMPOUNDED PETS

The pound is open for the release of impounded pets from 10am to 12noon on both Tuesday 27 December and Friday 30 December from Driffield Road, Morwell. Please note, EFTPOS only for release fees, no cash.

Outside of the advertised open days, we will meet your request for release if there are urgent circumstances.

Non-urgent release requests will be considered. Please call 1300 367 700.

Impounded pets may be viewed on Council's impound register online at [www.latrobe.vic.gov.au/lost-pets](http://www.latrobe.vic.gov.au/lost-pets)

## MATERNAL & CHILD HEALTH CENTRES

Restricted hours during Christmas and New Year period. Please contact the central booking number on 5128 6128, should you need an appointment.

# Rose Garden Festival a Blooming Success



The roses took centre stage at the annual celebration of Morwell's Centenary Rose Garden as part of the weekend's International Rose Garden Festival.

Over 4,000 roses bursting with spring colour were in full bloom for the two-day festival which drew local visitors and those from across greater Gippsland and Melbourne.

Celebrating the 30th anniversary of the garden, a crowd of more than 5,000 attended the festival and evening AGL Night Light installation, which returned to its full format for the first time in two years.

Among the highlights of this year's festival was the return of crowd favourite and ABC Gardening Australia host Costa Georgiadis, along with Interactive Experiences from special guests Bluey and Bingo.

Visitors took the time to stop and smell the roses while making the most of a range of workshops and talks, with live music, roving entertainment and culinary delights from local food trucks among the crowd favourites.

Latrobe City Council Mayor, Councillor Kellie O'Callaghan said that it was great to see this iconic

celebration returning bigger and better to its full format.

"This free community event has become a highlight on the events calendar, attracting people from all walks of life who enjoy taking a stroll and enjoying the wonders of the garden, expertly maintained and presented by the Friends of the Rose Garden volunteers," Councillor O'Callaghan said.

"Latrobe residents and visitors were treated to a magical experience, taking in the sights of the picturesque garden in full bloom.

Events such as the Rose Garden Festival play an important role in increasing the region's local tourism offerings.

There was a great sense of community and community pride across the weekend, as we celebrated our sense of identity.

The Festival provides opportunities for our community to connect and enjoy our City's natural attractions."

The event was delivered by Latrobe City Council and made possible through the support of the Victorian Government's Regional Events Fund and major sponsor AGL.



# Federation embeds Gunai Kurnai language into library spaces

As part of Federation University Australia's commitment to embedding Aboriginal languages across its campuses, parts of the Gippsland library recently underwent a transformation to feature new names and Aboriginal artwork.

The project is a key part of the University's Reconciliation Action Plan and aims to deepen the respect, understanding and cultural connection between the University and First Nations Peoples.

Following consultation with local Elders and the Gunaikurnai Land and Waters Aboriginal Corporation, three spaces at the library have been renamed. Two study spaces have each been named in the Gunai Kurnai language, with one named Tanderra - meaning 'resting place' and the second named Gallamdah - meaning 'to think'. The Gippsland Regional Studies Collection reading room has been named in honour of respected Gunai Kurnai elder Uncle Albert

Mullett. Uncle Albert was instrumental in leading the Gunai Kurnai People to gain full Native Title rights and responsibilities over their traditional lands in 2010 and was a respected craftsman of traditional wooden artefacts.

As part of the project, the renamed spaces now feature artworks by two renowned local Gunai Kurnai artists, Aunty Jenny Mullett - daughter of Uncle Albert Mullett - and Ronald Edwards Pepper. This collaboration between Federation's Library Services team, Aboriginal Education Centre and the Traditional Custodians of the land is just one of the ways Federation is striving to enable cultural security for Aboriginal and Torres Strait Islander students and provide a welcoming space for all. The University recently appointed Professor Andrew Gunstone to the inaugural position of Associate Deputy Vice-Chancellor, Reconciliation.



Gunaikurnai Elder Christine Johnson, Vice-Chancellor Duncan Bentley, Gunaikurnai Elder Dr Aunty Doris Paton and Chancellor Terry Moran

Indigenous. Federation University Chancellor Mr Terry Moran said "As a nation we have ignored the Indigenous people of Australia and failed to treat them with the respect and dignity they are owed. We

strive to enable cultural security for our Aboriginal and Torres Strait Islander students, and while there is still more to be done in this area, we are proud to be embedding Indigenous culture across our campuses

through language and artistic knowledge that has been passed down for thousands of years."

Gunai Kurnai Elder and Federation University Council member, Dr Doris Paton said "Embedding

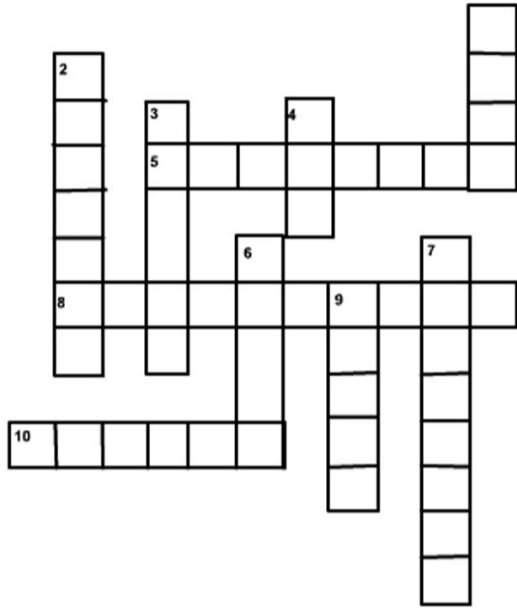
Indigenous culture and knowledge across the University establishes a commitment to the aspirations of community, and the pursuit of excellence in education and success for the future."

# CHURCHILL & DISTRICT NEWS

*"Connecting Your Community"*

# Christmas Fun Page

## Christmas Crossword Puzzle



**Down:**

- 1. This is one of the most famous Tree toppers.
- 2. What was Brenda Lee doing around the Christmas Tree
- 3. Who said, "don't cry I'll be back someday"?
- 4. How many Horses pull the sleigh in Jingle Bells?
- 6. What color is the Grinch?
- 7. What direction did the star lead the 3 Kings?
- 9. What reindeer could be seen on Valentine's day?

**Across:**

- 5. What did Grandma get run over by?
- 8. What is the name of the most famous Christmas Ballet?
- 10. How many pipers piping did my true love give to me?



## Christmas Word Scramble Game

- soyft r \_\_\_\_\_
- aontocsrdei \_\_\_\_\_
- gelan \_\_\_\_\_
- lesbl \_\_\_\_\_
- vlafiets \_\_\_\_\_
- ntrggseei \_\_\_\_\_
- binlctreeoa \_\_\_\_\_
- sveel \_\_\_\_\_
- srtmshaci \_\_\_\_\_
- ieebggadrrn \_\_\_\_\_



# Gippsland alumni celebrated for their distinguished achievements

From supporting community through challenging times, to the sharing of Indigenous culture and language, Federation University Australia's alumni are being recognised for their distinguished contribution to their chosen fields. Five leaders in education, communication and art were honoured in Federation University's 2022 Alumni Awards at a Gippsland ceremony on November 2. The awards formally recognise the achievements of distinguished alumni of Federation and its predecessor institutions, with last month's ceremony the first in-person event since 2019.

The Gippsland recipients of the Federation University 2022 Alumni Awards are:

Michael 'Mick' Harding - Aboriginal & Torres Strait Islander Alumnus of the Year  
Harpreet Kandra - Alumna Award for Community Service

Leah Mether - Alumna of the Year

Dr Doris Paton - Distinguished Alumna

Jan Feder - Distinguished Alumna (Posthumously)

Federation University Vice-Chancellor and President, Professor Duncan Bentley said "Our alumni transform lives and enhance communities on a daily basis - not only in the regions we serve but also on the national and international stage. These awards are an opportunity to recognise their tremendous work, while celebrating their lifelong connection to Federation University."

Federation University Alumni Awards 2022 - Gippsland recipients  
**Aboriginal & Torres Strait Islander Alumnus of the Year Michael 'Mick' Harding.**

Uncle Mick Harding is a poet, cultural activist, educator, and artist specialising in wood sculpting, printmaking, and giftware, who is dedicated to protecting and reinvigorating culture within his community. He belongs to the Mansfield region Yowong-Illam-Baluk and Nattarak Baluk clans of the Taungurung people and is an active member of the Taungurung, local and Victorian Indigenous communities. In 2016 he graduated with a Master of Visual Arts with distinction from Federation University, Gippsland. He graduated from predecessor institution, Monash University Gippsland campus with an Associate Diploma of Aboriginal Studies in 1988 and a Master of Fine Arts (Printmaking) in 2012.



In 2005 Mick established family business, Ngarga Warendj -Dancing Wombat, which is known for products produced by hand or through ethical licensing agreements. Mick's work can be found in numerous collections including the Koorie Heritage Trust.

#### Alumni Award for Community Service Harpreet Singh Kandra.

Harpreet Singh Kandra is community leader and volunteer with a passion for social justice, multiculturalism, health and the environment. He graduated from Federation University in 2016 with a Graduate Certificate of Education (Tertiary Education) and today is a lecturer in Water Engineering at the Gippsland campus. Harpreet has strong ties with many community organisations in his region and beyond, and has contributed to numerous initiatives to improve the health and wellbeing of local people and the community at large. As well as fundraising for cancer research and awareness, during the COVID-19 pandemic he promoted the importance of hygiene and vaccination, developing videos to help reduce isolation and promote creativity, as well as organising several multi-faith prayer sessions to lift spirits. After the 2020 Victorian bushfires he delivered meals to Blaze Aid volunteers every Sunday during reconstruction work. He also donated to flood relief after the floods in Punjab, India, and since 2017 has donated hay to 'Need for Feed' for drought affected farmers. Harpreet's compassion and commitment to improving the lives of individuals and communities has been recognised with awards including the 2019 Australian of the Year by

the Cardinia Shire Council; the Federation University Vice-Chancellor's Award for Contributions to Student Learning in 2020; and the Victorian Multicultural Commission's Honour Roll in 2022.

#### 2022 Alumna of the Year Leah Mether.

Leah Mether is a Gippsland-based communication specialist and soft skills trainer, motivational speaker, facilitator, mentor, and author. Graduating from Monash University Gippsland in 2002 with a Bachelor of Arts (Journalism), Leah has a solid background in leadership, corporate communications, business and journalism, and works with executives, leaders and teams Australia-wide to help them improve their communication, mindset and self-management under pressure. Leah started her career as a journalist, working for four years at the Latrobe Valley Express before moving into Communications Officer and management positions at Gippsland Water. In 2010 she started her own business, Methmac Communications, and over the last decade has grown it into a thriving company. In 2017 Leah undertook the Gippsland Community Leadership program and in 2019

was named winner of the Business and Professional Services category at the Gippsland Business Awards after being a finalist in 2018 and 2017. The same year she published her first book 'Soft is the New Hard: How to Communicate Effectively under Pressure' which was a finalist in the Australian Career Book of the Year Awards in 2020.

#### Distinguished Alumna Dr Doris Paton.

Dr Doris Paton is an accomplished academic and respected Aboriginal Elder with a passion for education, in particular the advancement of First Nations People through education, and the reclamation and revival of Aboriginal languages across Australia. Encouraged to pursue lifelong education, Doris graduated with a Bachelor of Arts (Social Science) from Monash University, Gippsland campus in 1993, and went on to complete a Graduate Diploma Education (Secondary); Master of Education Studies (Aboriginal Education); Master of Education (Aboriginal Education); and a PhD Philosophy (Education). Speaking Gunai and Monaro Ngarigo languages, Doris has been teaching language in context within the community to children and adults for

over 20 years. Doris's work has been recognised with several awards. She chairs the East Gippsland School for Aboriginal Health Professionals, promoting health careers to the Aboriginal community, where she has led important research to identify barriers for choosing health careers by Aboriginal people.

#### Distinguished Alumna (posthumously) Jan Feder.

Jan Feder was born in the Riverland region of South Australia in 1949 before moving to Adelaide in the late 1960s, an exciting time of reform and modernisation. Here, she explored various forms of the arts but on discovering ceramics and the permanent transformation of clay under intense heat, knew it was the medium for her. Jan first studied Ceramics at the North Adelaide College of the Arts. She loved shaping wet clay and the symmetrical beauty that only a potter's wheel can create.

Upon moving to Gippsland in 1979 she undertook a Diploma of Ceramics at the Gippsland Institute of Advanced Education (GIAE), now Federation University Gippsland campus, under Hedley Potts' tutelage. It was at the GIAE that Jan explored the expressive potential of clay beyond texture and form, and became fixated

on colour or, in a ceramic context, glaze. Respected by students for her diligence and technical ability Jan's death in 1981 evoked an immediate response from her peers for a memorial. Students discussed possibilities, such as funds for equipment, scholarships, and awards, but decided to commence a ceramics collection which would benefit future students, rather than a scholarship which would benefit only a few individuals.

Jan's peers immediately set about raising money by selling their ceramic 'seconds', called 'Junque Sales'. A grand total of \$760 was raised and the first two works purchased were by Victor Greenaway and Victoria Howlett, forming the basis of the Jan Feder Memorial Collection. From 1981, ceramic works were purchased from visiting lecturers who went on to become highly respected leading Australian and international ceramic artists, as well as from many of the staff who taught at the Gippsland campus.

The Artist in Residence Program assisted the collection, with many resident artists and international guests contributing works including Robin Welch, Anna Zamorska, and Sandy Brown. Ceramic events such as 'Strzelecki Spotkanie 1984' and 'Woodfire 86' also resulted in major contributions with graduating students and other ceramic artists also donating works.

The Jan Feder Memorial Collection now includes the work of over 80 ceramic artists. It is an important and valuable collection instigated at the height of a large ceramics movement in Australia and illustrates the importance of collecting by teaching and art institutions for the benefit of communities, future generations, and Australia's combined national Permanent Art Collection. The Collection is a fitting tribute to Jan Feder's life and works. Jan was posthumously awarded a Diploma of Ceramics.



#### Sight & Sound Engineering

Custom Electronics - Mobile Phone / Pc Repair Sales and Service - Cases for Mobile Phone/Tablet - New PC systems / Upgrades - Home Theatre /Projector - VHS to DVD Conversion

#### Trevor Whelan

Shop 16 West Place Churchill  
(Access from Marina Drive)  
ABN 57 719 482 063

Mob 0448690757  
PH 03 5122 3602

ford460v8@hotmail.com

www.sightandsoundengineering.com.au



## THE CHURCHILL FISH & CHIP SHOP

FOR TAKE-AWAY ORDERS PHONE



# 5122 1101

The staff would like to wish all  
our valued customers a very Merry  
Christmas and a Prosperous New Year

# Looking Back...

...through the eyes of local residents



## Lets remember Christmas from way back

By Leo Billington

In its' December 24, 1897 edition, the Morwell Advertiser had, in part, as its lead article, the following sentiment:

'The old stereotype phrase of a "Merry Christmas" will be oft repeated to those with whom we come in contact. Somehow or other everybody tries to look happy on Christmas Day, and the cravings of the inner man are more than appeased by all who can afford to do so. Apart from all the festivities and merry making, each Christmas as it rolls by should revert with more enduring importance, a day of anniversary'.

One year later, on December 23, 1898, the newspaper's main Christmas message editorial could have easily been applied to 2022:

'The advancement of knowledge, the wonderful discoveries and inventions which in these years of hurried progress follow each other so fast, that men have almost ceased to be surprised at anything, have sadly broken into the childish beliefs of other ages.

The wonders of electricity, the power of steam, the remarkable scientific discoveries in regard to light and heat and dynamics, have invested men's minds with a sense of pride and consciousness of power, to find out things and lay the whole world in tribute to their purposes, that in view of modern achievements, they are apt to look down upon the creeds of a bygone age, and the faiths which were revered in childhood, and died for by martyrs in what men are pleased to speak of now, as

the dark ages'.

Some years later two days prior to Christmas Day in 1904, our then fledging community was reminded once again what Christmas is all about:

'Australia, however, is not far behind the Mother land in her Christmas celebrations. Most people look forward to having a holiday and spending a merry time in a manner they best enjoy. Sports of various kinds, picnics, fishing, boating, shooting, hunting, dancing, etc., are amongst the many pastimes in which Australians find greatest pleasure.

Another important feature here about Christmas is that many families whose members have been dispersed and scattered far and wide in the restless struggles of life, are then re-united and meet once again in that happy state of companionship and mutual

good will, which is a source of such pure and unalloyed delight, and one'.

An editorial on Friday December 25, 1908, it was written that:

TIME waits for no man, and once again the great annual festival is upon us, when, throughout the whole world, men, women, and children endeavour in some way to celebrate the birth of one whose mission was to bring "glad tidings of great joy, and on earth peace and goodwill toward men," being none other than Jesus Christ, "the light of the world."

Christmas came for everyone. The Yinnar Race Club held a New Year's Day meeting - under VRC rules naturally, followed by an evening Grand Ball for everyone in the Mechanics Hall on Tuesday January 1, 1895.

Not to be outdone, the Morwell Turf Club had a Boxing Day meeting - under VRC rules naturally - on Wednesday December 26, 1894.

In an advertisement on December 23, 1898, shoppers were tempted to visit Misses Haize in Commercial Road to purchase Christmas cards. In his new Tarwin Street shop,

John Green on December 4, 1903 was rather polite asking customers to "call and inspect" Christmas novelties.

Morwell chemist, Herbert H Brown, appeared to have his marketing skills well honed - offering a free Christmas present if 5/- or over was spent (Morwell Advertiser, December 8, 1905). There is no doubting Herbert was early with his promotional strategy.

It seems most retailers were out chasing business via the Christmas spend just like in December nowadays. Green Brothers in Tarwin Street proudly announced in an advertisement on December 19, 1913, that they had a Santa Claus Table all ready and waiting for inspection.

Not to be beaten, across Tarwin Street at the Commercial Road corner, Noy and Nash, General Merchants and Bakers, wasted no time telling customers "that our shelves are filled with the choicest goods one can desire such as - raisins, prunes, almonds, sultanas, dates, cordials, currants and fig cakes. Christmas cakes are a specialty." 9Morwell Advertiser, December 19, 1913).

Even earlier, or too late, was Vinning Bros, brothers from Yinnar, who in their February 11, 1916 advertisement asked customers to "come and see" a Grand Display.

Many may still recall Greg Campbell at Campbell's Victory Café, corner of Commercial and Hazelwood Roads in Morwell. On November 14, 1946, he made a forecast that "Bottled Beer for Christmas - may be very scarce..." Dan Murphy, eat your heart out!

Moving on, on December 20, 1951, Morwell's butchers were united in explaining their Christmas opening hours. On that same day in the same year, Sharpes launched forward with Christmas bargains. In their December 16, 1954 advertisement, Hustlers Pty Ltd suggested customers shop early for a variety of specials on offer.

Now it's December 2022 and an appropriate time to recall John Lennon's famous words, released back in 1971

'So this is Christmas And what have you done? Another year over And a new one just begun'

## Looking Back (Postscript)



By Leo Billington

The 1954 Royal Tour of Gippsland article in the CDN October 2022 edition created plenty of interest. Memories from those who were able to view the Royal couple in Traralgon remembered huge crowds in attendance. Others, young students at the time, recalled a train hurrying through Morwell and only managing a quick glance at whatever it was. One reader sent a photograph of a flag donated by Morwell

Shire Council intended to be waved vigorously at the Royal train.

Aside from these memories, the Morwell Advertiser on December 16, 1954 (about eight months after the Royal visit in March 1954) reported that the Morwell Shire Councillors were still unsure about what financial contribution may be made towards the "Traralgon Council's Royal visit expenditure."

Morwell's Councillors did finally agree to paying a contribution but it was Councillor Alan Hall who really spoke in favour of a payment when he exclaimed "I do not want the name of the Morwell Shire Council to smell at the Traralgon Shire Council table."

Councillor Hall supported paying between £300 and £350. Council's unanimous decision was to pay £150.

## Churchill & District Lions Club



Meet 1st and 3rd Wednesday of each Month

Contact Secretary Phone: Sue Hanson 0413 033 986

## Tremendous Savings await Xmas Shoppers



# at SHARPES Xmas Sale

COME EARLY and SAVE.

### Frocks and Sun Suits Bargainised.

LOVELY COLORFUL HOLIDAY FROCKS... A DOUGLAS COX CREATION

29/11

BUT NOT IN ALL SIZES

GIRLS AND MAIDS' SUN SUITS... WHAT A BARGAIN

19/11

for the keen and thrifty... in LOVELY FLORAL SPUNES.

FROCKS AND SUN SUITS

39/11

A Douglas Cox creation, and yet going out at such ridiculously low prices, showing in smart American Fancy Colorful Mercerized Cottons.

### Give Her Hosiery

LOVELY HILTON NYLON HOSIERY to go at...

13/3

In all lovely shades and styles.

BEAU MONDE NYLON HOSE

13/6

HOLEPROOF NYLON HOSE

13/6

AND MANY OTHER POPULAR MAKES TO CHOOSE FROM

MILLINERY 16/11

SEASON'S GREETINGS



JUST OPENING.

Christmas Novelties.

CALL AND INSPECT.

J. GREEN, Draper, Morwell.

AA ACCOUNTING Accountants & Tax Agents

National Tax and Accountants Assoc.



Antonio Antonelli BBus(Acc) (NTAA)

Shop 13 Georgina Place

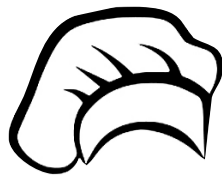
Churchill VIC, 3842

Mobile: 0407 688 424

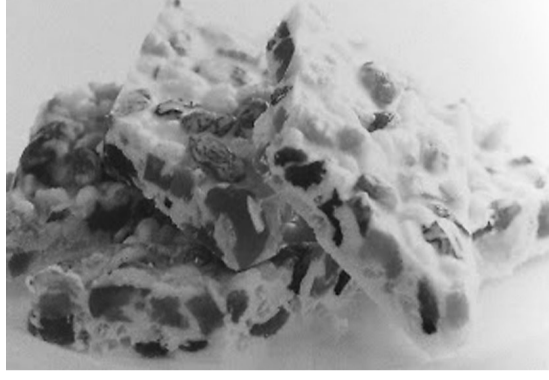
Phone: 03 5122 1155

Fax: 03 5122 3254

Email: tony@aaaccounting.com.au & office@aaaccounting.com.au



## White Christmas Slice



Grease and line a 20cm X 30 cm slice pan with baking paper. Melt 500gm of white chocolate melts in the microwave in 30 second increments. Remove from the microwave and stir in 1 cup of rice bubbles, 1 cup of sultanas, 1 cup of desiccated coconut, 2/3rds cup of dried apricots and finally 1/2 cup of sliced red glace cherries. Press the mixture firmly into the prepared pan. Refrigerate until firm. If you are not a fan of dried fruit you can substitute them with 160 gm of chopped spearmint lollies, 100gm of chopped berry jelly lollies, 110 gm of chopped yellow jelly babies and follow the above recipe.

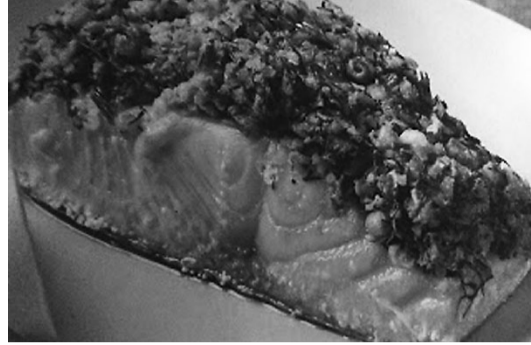
## Apple Cake



Preheat your oven to 160 deg C. Grease a 20 cm springform pan. Cream together 185gm of butter/marg with 1 dsp of lemon rind with 2/3 rds cup of castor sugar, in a small bowl with an electric mixer until light and fluffy. Beat in 3 lightly beaten eggs and stir in combined flours (1 cup of self raising flour and 1/2 cup of plain flour). Turn the batter into the prepared pan. Peel 2 apples, cut into quarters, remove cores, make lengthways cuts into the rounded sides of the apple quarters, slicing 3/4 of the way through. Arrange quarters, rounded side up, around the edge of the cake. Bake in the preheated oven for 60 minutes or until the cake is golden and a skewer inserted comes out clean. In a small bowl sprinkle 1 tsp of gelatine over 2 tbs of boiling water, dissolve and add 2 tbs of apricot jam. Spread half the mixture over top of the cake. Cool the cake in the pan, remove the cake from the pan and brush with remaining warmed jam mixture. This is a show stopper.

## Cooking with Noelene

### Mustard crusted salmon with dill and lemon



Preheat your oven to 180 deg C. Grease your roasting pan and lay your salmon fillets skin side down. Place 2 tbs of Dijon mustard in a bowl with 2 tbs of minced garlic, 2 tbs of chopped thyme, the zest of 1 lemon, 3 tbs of lemon juice, 1 whole onion finely chopped (white and green part), 3 tbs of dill finally add 1 tbs of peanut oil. Mix thoroughly to combine. Now mix in 1 cup of quinoa flakes and cracked black pepper. Use your hands to squeeze the mixture together so it holds. Divide the mixture into four and spread evenly over the top of each fillet. Drizzle lightly with a little peanut oil and bake/roast for 15-20 minutes until the topping is golden and the salmon is cooked. Serve with mixed grain and or a salad.

### Chicken and preserved lemon tagine with coconut quinoa



Slice 1 kg of skinless chicken thigh fillets in half and place them in a large plastic bag. Mix together in a bowl - 1 dsp of ground coriander, 1 tsp of turmeric, 1 tsp of ground ginger, 1 tsp of cumin, 1 tsp of salt and 1 tsp of cracked black pepper. Sprinkle this mix over the chicken and give the bag a really good shake to coat the chicken with the spices. Now peel and slice 2 medium onions and place in the bottom of an oiled tagine/pot with a tight fitting lid, place the seasoned chicken pieces on top in a single layer and then cover with the remaining onion slices. Remove and discard the pulp from one preserved lemon and chop the rind into small pieces and scatter them over the chicken along with 2 tbs of minced garlic mixed with 1/2 cup sliced olives. Sprinkle with a pinch of saffron and a good drizzle of peanut oil. Finally add 1/2 cup of water and swirl through with a wooden spoon, cover and bring to the boil, then reduce and simmer covered on a low heat for 60 minutes or until chicken is cooked and onions soft. If you do not have a tagine you could just use your slow cooker and cook on high for 4 hours. Serve with coconut quinoa. Place 1 and 1/2 cups of quinoa in a medium sized saucepan with 1 and 1/2 cups of coconut milk and 1 and 1/2 cups of hot water. Bring this to the boil and cover and simmer on a low heat for 15 minutes, until all liquid has been absorbed. Lightly stir through the finely chopped/grated zest of 1/2 lemon and chopped coriander with a fork before serving with the chicken. N.B For you odd people who do not like coriander please substitute it with fresh oregano.

### Apple/pear and cinnamon crumble



This is another version of Apple/Pear Brown Betty. Versions of this recipe date back to the 1800's. Though the British crisp crumbles are clearly similar to Brown Betty, this seems to be of American origin, rising in popularity alongside the Aussie cobbler around the turn of the century. My thoughts are the crumble is of English influence, the Brown Betty could only come from America, and the cobbler is Australian by definition. Preheat your oven to 170 deg C. Peel and core 5 pears/apples or a mix of both and then slice into slices into a bowl. In a separate bowl combine 1 cup of brown sugar (loosely packed), 1 dsp of ground cinnamon, 1/4 tsp of nutmeg, 1/4 tsp of ground cloves, 1/4 tsp of ground all spice and 1 cup of quinoa flakes. Melt 125 gm of marg/butter and pour into the sugar mixture. Remove 2 tbs of the mixture to a small bowl and add 1/2 tsp of cinnamon, now toss this mix through the apple/pears with your hands. Place the apples/pears into the ovenproof dish and top with the remaining sugar mixture and bake for about 40 minutes or until the fruit is tender and the crumble is crisp. Serve warm or cold on its own or with cream.

### Whole snapper with mushroom and leek stuffing



Steam 1/2 cup of quinoa grain in 1 cup of water in your rice cooker. Heat 2 tbs of canola oil in a pan over a medium heat and saute 1 finely washed leek until soft. Add 250 gm of sliced mushrooms, season with a little nutmeg and cook until the mushrooms are soft, stir in 2 tbs of minced garlic. Now add 2 tbs of fresh chopped parsley and 1 dsp of dried oregano. Remove the pan and mix in the cooked quinoa and season with a little cracked pepper. Place the snapper, that has been cleaned and scaled (1.5 kg approx) in a baking paper lined ovenproof dish. Preheat your oven to 180 deg C. Sprinkle the cavity of the fish with a little lemon juice and fill it with the stuffing mix. Pour extra lemon juice over the fish and drizzle with canola oil. Place the dish in the preheated oven and bake for 15 minutes. Remove from the oven and arrange tomato and onion slices over top of the fish and sprinkle with sliced spring onions and a little parsley. Lay a sheet of foil over the fish and bake for a further 30 minutes or until the fish is cooked through. Remove the foil and allow the tomato and onion to take on some colour. You may ask how do you get a snapper - get to know a fisherman or go to the Melbourne fish market.

**Strut Re-Gas GIPPSLAND**

**"The Strut Specialist"**

Struts are not throw away items ...  
**They can be RE-GASSED**

- Sales of Steel and Stainless Struts
- Repairs to all types of Struts
- Design applications and pressure modification
- Handles and Fittings available

**PICK-UP IN MOST AREAS**

**Tel: 5166 1665 Mob: 0407 542 122**

**Aaron Pearce Plumbing Services**

PO Box 408 Churchill  
**0412 795 984**

- \* Split System Air Con
- \* Solar Hot Water
- \* Wood Heating
- \* Roofing
- \* Gas Fitting
- \* Drainage

Reg No 46053

**CHURCHILL CHINESE RESTAURANT**

*"Merry Christmas and Happy New Year to all our valued customers"*

**Lunch**  
Tues - Fri 12.00 noon - 2.00 pm  
**Dinner (Open 7 nights)**  
Sun - Sat 5.00 pm - 9.30 pm

**Shop 16, Hazelwood Shopping Village**  
Please call to book  
**BYO Licensed Phone: 5122 3294**

# Latrobe Health Advocate

By Jane Anderson

Thank you again to Churchill News for inviting me to contribute to this edition of your community newsletter. In this edition, I would like to share some highlights from the progress report highlighting the changes that have been implemented to improve local end-of-life palliative care services, and an updated action plan to improve access to primary healthcare services in the region.

In September 2019 I released a report, 'Achieving Victoria's best end-of-life experience for people in Latrobe', which included five areas for reform and twelve recommendations for action. In the past year, there has been substantial progress made in several areas for action.

I am now committed to ensuring the challenges identified in this progress update are addressed and encourage the Victorian Government to consider how the recommendations of this work can be implemented to achieve the best end-of-life experience for people in Latrobe.

Service system leaders, palliative care specialists and local communities have demonstrated their readiness for the establishment of a dedicated facility in Latrobe, enabling a greater place of choice.

There are significant constraints within the public health system including a limited number (four) of funded inpatient palliative care beds within the hospital setting. Local services are reporting an increase in demand for end-of-life palliative care and have stated that the existing beds do not meet the current demand. Work needs to occur to undertake a thorough assessment of the local system's capacity to meet current and future demands for inpatient palliative care.

Further consideration should also be given to how contemporary governance brings health services and communities together to share their collective expertise. This could be modelled on some of the emerging work occurring within Victoria as part of the mental health system reform.

I want to acknowledge the efforts of local services and palliative care workers who have demonstrated their commitment to working together to respond to the aspirations of people in Latrobe.

I have no doubt that with the continued support of the Victorian Government, people in Latrobe and the broader Gippsland region will be able to experience a consistently high standard of end-of-life care that is on par

with what they deserve and is offered in places of their choice.

As part of our 2021-22 Statement of Intent, I reaffirmed my commitment to the Victorian Minister for Health and communities across Latrobe to continue to address the systemic underlying issues that impact how people in the region access GPs. This has been a priority for my office since 2019 in response to the voices of Latrobe communities, GPs and health services who have reached out to express their concerns and detail their challenges.

In September 2020 I released 'Improving Access to Services in Latrobe', a collaborative action plan that demonstrates a shared commitment to improving access to GPs. Actions within the plan were drafted and reviewed by a wide range of key stakeholders and coordinating agencies who remain committed to improving access to primary healthcare services in Latrobe.

I released a progress report in September 2021, which acknowledged the actions that had been taken to improve training pathways for doctors, build digital literacy, promote the liveability of Latrobe, and enable local system design and innovation to reduce the burden on the emergency department.

I identified at that time that there was scope for more organisations to join the conversation and an opportunity to harness the strength and capacity within the Latrobe Health Innovation Zone and of the Latrobe Health Assembly to influence a move towards a model of prevention rather than cure.

Action plan stakeholders have worked independently and together to raise awareness of community needs and deliver on their commitments, and the revised action plan has been created based on community views and partner agency feedback to ensure it remains relevant, accurate and future-focused.

A recent survey of Latrobe communities shows that making an appointment to see a GP remains difficult in the Latrobe Valley, with patients having to wait for up to four weeks. Community members have reported that when they are unable to access a doctor for themselves or someone they care for, they commonly try the emergency department, Nurse on Call or a local pharmacy.

When asked about ways to reduce the demand for local doctors, community members have suggested a reduction in smoking, healthy eating, exercise,



improvements to local transport infrastructure, preventative health checks, increased use of nurse practitioners and telehealth, as well as attracting more medical practitioners to the region.

In the year ahead, my office will continue to seek opportunities to work with local Aboriginal organisations and communities to learn more about person-centred models of care. There is also a need to support the education and health sectors to promote the primary and secondary school offerings in Gippsland for GPs' children and families. I am particularly enthused by the opportunity for local stakeholders to work together to implement the Priority Primary Care Centre and Urgent Care Clinics in Latrobe in a way that complements and integrates with existing services.

I am encouraged by the increased level of strategic alignment and cooperation that is occurring between State and Commonwealth-funded initiatives. I understand that it will take some time for local communities to experience a notable change in the ways they access healthcare, however, I remain confident that the conditions exist to bring about sustained reform that will ultimately improve population health outcomes in the Latrobe Valley.

I will continue to advocate on behalf of Latrobe communities and encourage you to share your experiences with me.

If you, or a group you belong to, would like to share your experiences with me please get in touch with Kylie on 1800 319 255 and she will organise a time for us to catch up.

The full reports can be found on our website at <https://www.lhadvocate.vic.gov.au>. Printed copies are also available from the office or Kylie can arrange for one to be posted to you.

If you have any questions about the reports or the information provided, please contact us.

You can also keep up to date with my work through Facebook, Twitter and Instagram. I look forward to hearing from you in the coming months.



Happy Holiday Break!

Like many volunteers who work for community groups, CDCA members are looking forward to a bit of a break over the festive season. We have been so busy of late!

In partnership with Churchill Neighbourhood Centre and Churchill & District News, we held the Churchill - Shop Local Christmas Market on Saturday December 3. Many thanks to the folk from our three organisations who lent a hand for planning, organising and on the day.

Volunteers from both Churchill Fire Brigade and Churchill Lions Club turned out to cook sausages, while others also helped out to make our market a success. A full write-up, with sponsorship acknowledgements and photos, will appear in the February 2023 issue of the News.

CDCA also supported the Public Art Event held in Churchill Town Hall on the same day as the market. So good to see the Hall being utilised as an entertainment venue on a Saturday!

The Art Event was something different for Churchill – video projections, collaborating artists, experimental music, and an organised bike ride just for a bit of variety.

It is also good to see Hazelwood South Hall occupied again. A representative from CDCA attended the reopening of the Hall last month and was delighted to report on

the renovations the new tenant – Churchill Christian Fellowship – has undertaken.

We also received an invitation to attend a stakeholders' consultation meeting in late November about the on-going management of Eel Hole Creek. Latrobe City Council is putting together a Waterway Management Plan for the urban reaches of our local creeks and streams.

One of the advantages of having a long-standing advocacy group like CDCA is the pool of accrued knowledge that members can share with other agencies. CDCA was pleased to be included at this consultation forum and was able to provide the facilitating consultant with a number of studies and documents relating to Eel Hole Creek.

Victoria Police invited CDCA to attend their Latrobe 2022 CommSafe forum in early December. Many community groups from across Latrobe City were represented at this forum (including CDCA), at which a panel of senior police officers led discussions on community safety concerns.

CDCA's last meeting for 2022 was held on December 8, which was the same day as the 50th anniversary celebration of the Churchill Campus (now Federation University) was held. The latter event was held at the University Auditorium and the local community was well represented, along with past and present employees.

Our guest speaker at our December meeting was from Council - topic was the planning for a lighting upgrade of the Churchill Town Symbol. A substantial sum will need to be spent to provide permanent lighting to the top of the Symbol and Council will require plans, estimates and an adequate budget.

Over the years, three different lighting systems have been installed, but all have been plagued by failure of some sort – weather, nesting birds, equipment degradation and difficulty of access, to name a few problems. CDCA is hoping that this time a really good outcome can be achieved so that the Town Symbol can be seen from afar at night, as it was meant to be.

CDCA has been doing quite a bit in the lead up to the end of the year – and it is a busy time for most folks anyway. Now we are going to have a break over January!

Our first meeting for 2023 will be held on February 9 – we meet at 7pm on every second Thursday of every second month, in Studio 1, downstairs in Churchill Town Hall (park and enter from Philip Parade). All local residents are welcome to attend and contribute to our discussions.

You can also contact us via our website or our Facebook page (search for Churchill District Community Association) or you can write to us at PO Box 191, Churchill.

**A message about**

## Recycling from Churchill Community Hub

**RECYCLE YOUR PLASTIC BREAD  
TAGS AT THE HUB**

**Look for the 'Recycling Centre' in the Churchill  
Community Hub near the entrance to Childcare  
and Kindergarten**

PLACE IN USED ENVELOPE E2  
15 OCT  
V BEST  
W BRETONE

}

Many bread tags are now made of cardboard.  
Look for the Recycling Logo on your bread tag – if it's there, then it's cardboard!  
You can recycle the cardboard tags by placing them in a used envelope and putting them in your recycling bin at home.

VUJ2 BEST  
W BRETONE  
SEP 26

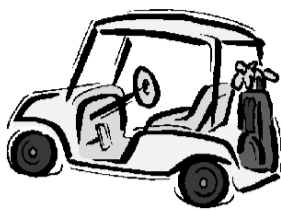
}

Only **PLASTIC Bread Tags** should be brought to the Hub for our recycling program.

# SPORT

"Connecting Your Community"

## Churchill & Monash Golf Club



Monthly Medal Saturday 29/10/2022. Hc - A Grade - B. Barnes - 11 83 72 C/B. Medal - B Grade - L. Anderson 26 - 102 76 C/B. Scratch - T. Webb - 81. D.T.L - 1. P. Smart - 72. 2. T. Webb - 72. 3. D. Dunne - 72. 4. M. Brereton - 73 C/B. N.T.P - 3rd M. Brereton Pro-Pin, 12th C. Hogbin, 14th B. Barnes. Target Hole - Mamun. Putts - T. Webb - 24.

Stableford Saturday 05/11/2022. A Grade - T. Webb - 38 Pts. B Grade - G. Barnes - 33 Pts. C Grade - M. Hutchinson - 33 Pts. D.T.L - 1. B. Barnes - 35, 2. G. Spowart - 33, 3. M. Allen - 32, 4. M. Brereton - 32, 5. D. Dunne - 32, 6. P. Flannigan - 31 C/B. N.T.P - 3rd - D. Byers, 5th - D. Beyer, 12th D. Dunne, 14th B. Kearns. Target Hole - B. Kearns. Birdies - D. Burridge 3rd.

Monthly Medal /1st Round Championships

Tuesday 8/11/2022. Hc. Scratch Winner - M. Dear - 15 - 97. Medal Winner - M. Ryan - 30 - 77 Nett. Day Winner - M. Ryan. Putts - S. Caldwell - 25. D.T.L - S. Caldwell - 79. N.T.P - 3rd S. Caldwell, 5th M. Ryan, 12th M. Dear, 14th L. Brent.

Championships Rnd 1 Saturday 12/11/2022. Hc. A Grade - D. Burridge - 14 - 81. B Grade - A. Sharrock - 23 - 96. C Grade - C. Gilfillan - 26 - 104. Scratch - D. Burridge - 81. D.T.L - 1. J. Langstaff - 71, 2. P. Smart - 72, 3. G. Sanders - 73, 4. J. Barnes - 74, 5. G. Spowart - 75, 6. D. Byers - 76. 7. M. Brereton 76 - 8. G. Beyer - 76, 9. S. Sanders - 77 C/B, 10. B. Skinner - 77 C/B, 11. L. Anderson - 77 C/B. N.T.P - Pro-Pin - 3rd C. Gosling, 5th J. Langstaff, 12th B. Kearns, 14th P. Chapple. Target Hole - P. Smart. Birdies - C. Cummings - 14th, J. Langstaff 5th, A. West 12th.

Star Medal /2nd Rnd Championships Tuesday 15/11/2022. Scratch Winner - M. Dear - 104. Day Winner - M. Ryan - 111-30-81. Star Medal Winner - M. Ryan 111-30-81. D.T.L - S. Caldwell - 82. N.T.P. 3rd - L. Brent, 5th - M. Dear, 12th

- M. Ryan  
Championships Rnd2 Saturday 19/11/2022. A Grade - P. Smart - 11 81 70 C/B Nett. B Grade - J. Barnes 19 90 71, C Grade - P. McGann 25 100 75. D. Grade - C. Stevens 45 119 74. Scratch - M. Brereton 80. D.T.L - 1. M. Brereton 70, 2. R. King 73, 3. A. West 75, 4. C. Gilfillan 75, 5. B. Barnes 75, 6. R. Welsh 75, 7. D. Burridge 75, 8. R. Timbs 75, 9. T. Collins 75, 10. A. Sharrock 76 C/B. N.T.P. P. 3rd M. Brereton, 5th D. Byers. Pro-Pin 12th M. Brereton, 14th J. Langstaff, Target Hole - D. Dunne. Birdies - R. Welsh 3rd, B. Barnes 12th, M. Brereton 3rd, M. Soppe 3rd.

3rd Rnd Championships Tuesday 22/11/2022. Scratch Winner - M. Dear - 106, Day Winner - Lia Brent 85 Nett. D.T.L - Sandra Caldwell 87 Nett, N.T.P - 3rd L. Brent, 5th M. Dear, 12th V. Reid, 14th M. Dear

Championship Winners For 2022. Scratch Champion - M. Dear - 97, 104, 106 = 307. Handicap Champion S. Caldwell - 248. Grade Handicap - S. Caldwell - 248. A Grade Handicap - V. Reid - 281

## Table Tennis

### Table Tennis Victoria partner with Latrobe City Council and Destination Gippsland from 2023-2030

Latrobe City is set to become the home of table tennis in Victoria with two of the biggest events on the annual table tennis calendar to be hosted in Gippsland for the next eight years.

The Victorian Country Championships and Victorian Open Veterans Championships will be held at the Gippsland Regional Indoor Sports Stadium (GRISS) in Traralgon from 2023 to 2030 as part of a new partnership between Table Tennis Victoria (TTV), Latrobe City Council (LCC) and Destination Gippsland (DG).

In an exciting move for regional table tennis, the eight-year deal will see the state-of-the-art GRISS facility add 60 new table tennis tables, court barriers and umpires' chairs to host the events during April and June each year.

The two annual competitions will result in approximately 500 table tennis competitors and their families visiting the region each year to stimulate the local tourism economy

and create long-lasting connections with local businesses.

The \$19 million redevelopment and expansion of GRISS was completed in 2020 with the venue featuring nine indoor courts, a show court with spectator seating, training rooms and a cafe allowing the facility to cater to a range of indoor sports.

GRISS is a proven event space, with a proud history of hosting large regional, national and international indoor sporting championships. With well-established connections with basketball and netball, TTV is excited to add table tennis into the annual rotation of events.

TTV CEO Gen Dohrmann is thrilled about the partnership and to bringing the Country Championships back to Regional Victoria as well as the Victorian Open Veterans tournament.

"To be able to have a newly refurbished stadium with brand new equipment capable of hosting marquee table tennis events is fantastic," Dohrmann said.

"The commitment from the Latrobe City Council and Destination Gippsland

to bring these events to Traralgon means we can spread high level table tennis further across Victoria."

Mayor of Latrobe City Councillor Kellie O'Callaghan welcomed the opportunity to be the regional home of table tennis in Victoria.

"This long-term partnership will be a fantastic addition to Latrobe City's sporting calendar, building the profile of the sport within the Gippsland region and creating new opportunities for increased participation," said the Mayor.

Destination Gippsland CEO, Terry Robinson said, "the opportunity to partner with Latrobe City Council and Table Tennis Victoria to bring these high profile events to Gippsland for eight years will not only bring more visitors to Gippsland, but will create a lasting legacy resulting in Gippsland being known as the home of Table Tennis."

The first event to be held as part of the agreement will be the 2023 Victorian Open Veterans Championships, held in conjunction with the Victorian Open Junior and Senior Championships, on April 15 to 16, 2023.

## EnergyAustralia scholarships to give real-world experience for students

New scholarships will help increase access to tertiary education in Gippsland and embed important on-the-job learning in degrees to give Federation University Australia students a head start on a successful career. EnergyAustralia will provide scholarships worth \$6000 each to four Gippsland students in 2023, along with 400-450 hours of paid industry placement. The scholarships will be available to two electrical engineering students, one civil engineering student and one environmental sciences

student, helping support them to focus on their studies and prepare to enter the workforce.

This initiative is an exciting step in Federation University's goal of becoming Australia's first cooperative university, where programs are co-designed, co-developed and co-delivered in partnership with industry and extended workplace learning is embedded in all programs. It builds on a series of partnerships between the University and the energy industry to build a skilled local workforce in Gippsland

as the region transitions to new energy technologies.

This year, Australian Carbon Innovation offered six scholarships of \$7000 to support Gippsland engineering students in the preferred electrical and mechanical disciplines, and is renewing its support for 2023 with eight scholarships available.

Federation University and Star of The South also partnered earlier this year, giving a Gippsland based student the opportunity to work in the offshore wind sector while completing their degree.

For more information on scholarships, visit [federation.edu.au/scholarships](http://www.federation.edu.au/scholarships). Federation University Vice-Chancellor and President Duncan Bentley said "These scholarships will transform lives and are an excellent example of how we are working with industry to enhance our regional communities. It is successful industry partnerships like this one that will drive our new co-operative education model - where an extended period of workplace learning will be embedded into all our programs from 2025."

[www.cdnews.com.au](http://www.cdnews.com.au)



Churchill and District News

Email

[cdneditorial@cdnews.com.au](mailto:cdneditorial@cdnews.com.au)

[cdnadvertising@cdnews.com.au](mailto:cdnadvertising@cdnews.com.au)



supports Churchill & District News

We love our community newspaper!

Contact CDCA via our website - [www.cdca.org.au](http://www.cdca.org.au) or find us on Facebook!

CDCA NOW MEETS ON 2nd THURSDAY OF EVERY 2nd MONTH  
Next Meeting: 7pm, Thursday, February 9, 2023,  
downstairs in the Churchill Town Hall (park and enter from Phillip Pde).



Jumbuk Communications

Mob: 0438886942

- \* Business Communications Systems
- \* Network Cabling
- \* NBN Internet & Phone Lines
- \* Video Surveillance



Morwell & District Red Cross Branch

Members will meet on the second Wednesday of each month from 1.30 pm to 3.30 pm.  
New members are welcome to attend  
For further information contact the Secretary

Phone 0427 273 910



St Vincent de Paul Society  
good works

St Vinnies wishes everyone a Happy Christmas and a Safe and Happy New Year 2023.

The Soup Van and relief deliveries will stop from December 16 and resume in the New Year on January 13.

For emergency assistance Phone 5122 3979



# CHURCHILL

# Plan. Act. Survive.

## Embers

Do you know how far an ember can travel before starting a new fire? Or that the heat and ferocity of a bushfire could melt the trailer off a ute?

Victoria is one of the most fire prone areas in the world and bushfires and grassfires are a part of life.

Bushfires and grassfires start quickly, often without warning and they can threaten lives and properties within minutes.

All Victorians need to know how to plan for and respond to fire.

If you see behaviour that could lead to a bushfire, it is up to you to report it and keep our community safe. Call Crime Stoppers on 1800 333 000, or go to [crimestoppersvic.com.au](http://crimestoppersvic.com.au)

In an emergency, or if you see smoke or flames, call 000 immediately.

## Plan and Prepare for Fire

During an emergency such as a bushfire, it is hard to think clearly. You may forget important things or waste valuable time deciding where to go.

There are some simple steps you can take to get ready now:

- familiarise yourself with the new Australian Fire Danger Ratings and check them every day during the fire season.
- make your fire plan and talk with your family about what you will do. Just as every family or household is unique, every plan will be different.
- if you live in a regional area at risk of bushfires or grassfires, be prepared to leave early on very high-risk days or if a fire starts. Leaving early is the safest option.

## Fire Danger Ratings

The Fire Danger Rating is a scale that tells you how dangerous and unpredictable a fire will be if one starts.

As of September 1, 2022, Fire Danger Ratings changed across Australia.

Fire Danger Ratings provide information so people can take action to protect themselves and others. The higher the fire danger, the more dangerous the conditions and the greater the impact will be if a fire starts.

The new system uses better technology and research to determine fire danger ratings, and was developed using feedback from one of Australia's largest surveys of communities.

The new ratings are designed to be easier to understand and provides clear advice about actions to take.

The new Australian Fire Danger Rating system is determined by:

- weather data from the Bureau of Meteorology.
- other environmental conditions such as fuel load.

Fires can start on any day with any rating. On higher danger-rated days, fire is more likely to be unpredictable and difficult for emergency services to control.

You need to know the rating in your area. (See below).

Each district is given its own rating for each day over the warmer months. Ratings are forecast up to four days in advance and updated daily. Find your fire district on the CFA's website.

You can also find important localised information to help you plan for bushfire in your area at the CFA Local Information page.

Learn more about each of the ratings

## Catastrophic

If a fire starts and takes hold, lives are likely to be lost.

These are the worst conditions for a bush or grass fire.

Schools, parks/forests and some businesses will close when a Catastrophic day is declared.

### What should I do?

For your survival, leave bushfire risk areas. Your life may depend on the decision you make, even before there is a fire.

Stay safe by going to a safer location early in the morning or the night before. Homes cannot withstand fires in these conditions. You may not be able to leave and help may not be available.

Avoid forested areas, thick bush or long, dry grass.

- Know your trigger to leave.

- Make a decision about:
- when you will leave
- where you will go
- how you will get there
- when you will return
- what will you do if you cannot leave.

## Extreme

These are dangerous fire conditions and the safest option is to leave fire risk areas early in the morning or the night before.

Fires will spread quickly and be extremely dangerous.

Expect extremely hot, dry and windy conditions.

### What should I do?

Take action now to protect your life and property.

Check your bushfire plan and that your property is fire ready. If a fire starts, take immediate action. If you and your property are not prepared to the highest level, go to a safer location well before the fire impacts.

Reconsider travel through bushfire risk areas. Leaving bushfire risk areas early in the day is your safest option.

Be aware of local conditions and seek information.

- You can:
- listen to your emergency broadcasters
  - visit the CFA website
  - call the VicEmergency Hotline on 1800 226 226.

## High

Fires can be dangerous.

### What should I do?

Check your fire plan. There is heightened risk. Be alert for fires in your area.

Decide what you will do if a fire starts. If a fire starts, your life and property may be at risk. The safest option is to avoid bushfire risk areas.

Be aware of local conditions and seek information.

- You can:
- listen to you emergency broadcasters
  - visit [cfa.vic.gov.au](http://cfa.vic.gov.au)
  - call the VicEmergency Hotline on 1800 226 226.

## Moderate

Most fires can be controlled.

### What should I do?

- Stay up to date and be ready to act if there is a fire.
- Check your fire plan.
- Monitor conditions.
- Action may be needed.
- Leave if necessary.

## No rating

The system has an 'off' level for days where no proactive action is required by the community. This does not mean that fires cannot happen, but that they are not likely to move or act in a way that threatens the safety of the community. This rating is the thin white wedge on the colour wheel sitting under 'Moderate'.

## How to plan for bushfires and grassfires

Which Fire Danger Rating is your trigger to leave?

It is very important to know what your plan will be for fire risk days. Decide what you will do on High, Extreme and Catastrophic days.

For more information on Fire Danger Ratings and warnings, you can visit the Vic Emergency website.

Will you leave early that morning or the night before?

Leaving early on fire risk days is always

the safest option. It is rare that you will need to do this. Once the Fire Danger Rating reaches Extreme or Catastrophic, you should plan to leave all fire prone areas for the day.

Leaving early on fire risk days before a fire starts is safer. It means you will be in a clear mindset to follow your fire plan. It also reduces the risk of leaving too late when a fire has already started.

Always discuss with your family and friends when you will leave, so that everyone is clear what the plan is.

### Where will you go?

It is best to have a couple of places to go. The person you planned to visit may not be home, or the route you planned to take may be closed.

- Will you go to a:
- relative's house?
  - hotel?
  - shopping centre far away from fire-prone areas?

Decide on some options and make sure you let everyone in your family or fire plan know what they are.

What route will you take and how will you get there?

When you are making your fire plan, think about the unexpected and consider back-up plans.

What if:

- a tree has fallen on the main road out of town?
- the kids are at a sleepover?
- your partner is out of town?

Think about how you will put your plan into action and what you might need to change at short notice.

It is particularly important to know what you will do if you are not able to drive for any reason. How will you get away from fire prone areas?

It is always safer to leave early.

### What will you take with you?

Make a list of things you will need and important documents and items you want to keep safe. This is your Emergency Kit.

- Pack things like:
- a phone charger
  - bottles of water
  - spare clothes
  - toiletries
  - medication
  - pet food
  - torch/batteries
  - cash
  - passports
  - photos and precious possessions.

How much do you need to pack? As a guide, think about what you will need if you are away for three days.

Put a reminder in your calendar to put together your Emergency Kit before the fire season.

Need help with your list? The Red Cross have a great app 'Get Prepared' to help organise all the important items you need to consider. Do an online search for "Australian Red Cross Get Prepared"

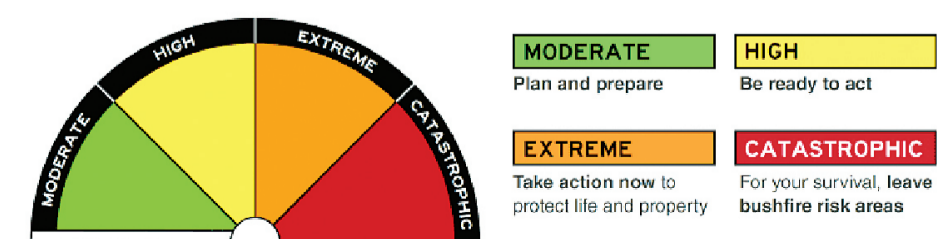
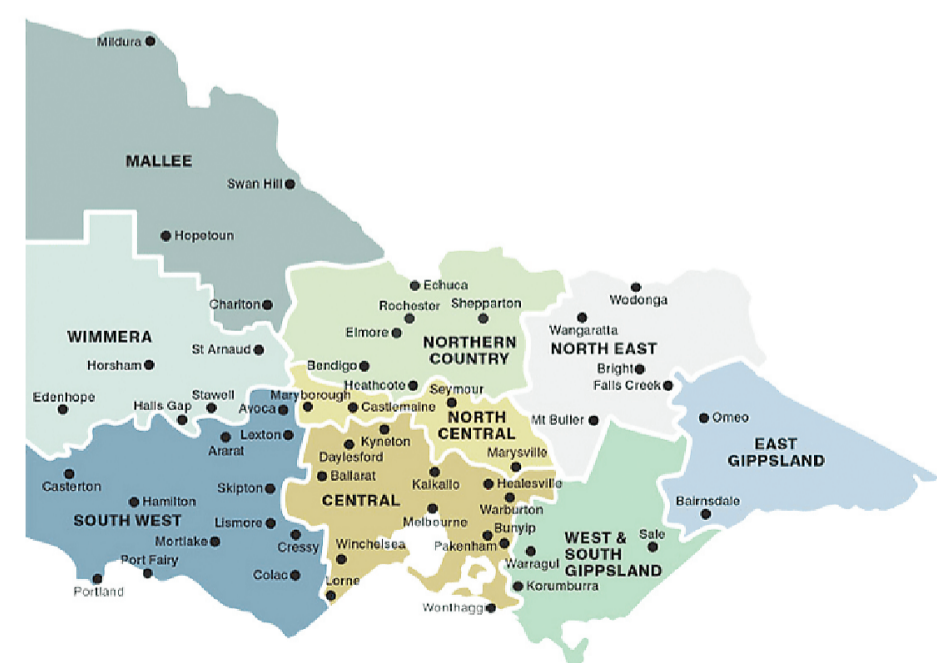
### What do you need to organise for your pets or livestock?

Fires are also a very stressful time for your pets and livestock.

Having a plan for them means they will be happier and safer when an emergency hits:

Visit the Country Fire Authority website for tips on caring for your pets during and after a fire.

Don't forget to pack items for your





animals in your Emergency Kit.  
**Who do you need to keep informed of your movements?**

It is important to let your family and friends know you are safe and what your movements are. It can reduce everyone's stress and concern.

Make a list of people you will inform. Make sure to note down their contact details, just in case you lose your phone or it runs out of battery.

Is there anyone outside your household who you need to help or check up on?

Is there anyone in your street who may need a little extra help?

They could be:  
- elderly neighbours  
- families with small children  
- people who are not able to drive or travel easily.

Check in with them to see what their fire plan is and if they will need help in an emergency.

### How will you stay informed about warnings and updates?

You can:  
- visit VicEmergency for all emergency information  
- download the VicEmergency App from the App Store or Google Play for on the go information  
- listen to your local radio  
- call the VicEmergency hotline for fire information on 1800 226 226.

Social media is also a great way to stay across bushfire information. You can follow:

- VicEmergency on Facebook and Twitter
- Country Fire Authority (CFA) on Facebook and Twitter
- Fire Rescue Victoria on Facebook and Twitter.

### What does Leave Early mean?

If you live in a regional area at risk of bushfire and grass fires, we recommend to always leave the night before or morning

of an Extreme or Catastrophic (Fire Danger Rating) day.

These days are rare. They are rated high risk because of:

- the heat
- how dry the area is
- how much dry vegetation there is (for example if there is dry forest, long grass, thick bush)
- the wind.

The worse these conditions are, the more difficult it is for emergency services to control fire. If the fire is unpredictable and uncontrollable, you do not want to be anywhere near it. Leave early.

Fires can start at any rating. Watch the conditions and check warnings so you know what to do if a fire starts.

You can:  
- download the VicEmergency App from the App Store or Google Play

- add your location preferences (for example your home or other family member's

homes)

- set up notifications to be alerted of Fire Danger Ratings and emergency warnings.

### Total Fire Ban Days

Total Fire Ban Days are different to Fire Danger Ratings:

A Fire Danger Rating tells you how dangerous a fire is likely to be if one starts. It gives you information to help you decide how you should put your fire plan into action.

A Total Fire Ban tells you if it is legal to do certain activities that may start fires.

Total Fire Bans are declared by CFA on days when fires are likely to spread rapidly and be difficult to control. This sets legal restrictions on what activities can or cannot occur in a district for that day.

The purpose of a Total Fire Ban is to reduce the activities that may start a fire such as campfires and some outdoor BBQs.

You can find out more about what you can and cannot do on Total Fire Ban days on the CFA website.



# SCHOOL NEWS

# BOOLARRA PRIMARY

### Tour De Cure

On November 17, we had some very special guests at Boolarra Primary School. We had Tour de Cure cyclists come. They are riding to find a cure for cancer. On the day they visited us they were riding from Traralgon to Inverloch, stopping at a few schools on the way. Their message was, Be Fit, Be

### Healthy, Be Happy!

On November 25, we dressed up as a sports person to help them raise money for cancer research.

It was really interesting learning about what they do to raise money for cancer.

Sophia

### Bike Ed

We are doing a program this term called, Bike

Ed and it's held every Thursday.

Bike Ed is a program where we learn how to ride a bike. Most of the students knew how to ride, but I couldn't. Happily, a couple of sessions later I could ride a bike and it was so cool and fun. I'm still learning to ride but I'm still alright. Our teachers are Ms. Larrad,

Craig and Nadene. It is really fun, and I'm really excited for the next lesson.

By Declan

### Science World Excursion

We went to science works on November 2, 2022. It was super fun! My favorite thing there was the Planetarium where the chairs could lean back. We learnt about space and the different

constellations and planets around us.

There were rooms at Science Works, and they all had different sections.

There was a sports, space and science room. They were all equally fun, and we got to test our strength accuracy and aim accuracy in the sports section, build our own car, and learn about what

gravity would be like on different planets in the Space Room.

We learnt a lot of new things in the Science Room. Overall, I thought Science Works was an extremely fun excursion and I am extremely grateful that I could go!

Toby G



Tour for a Cure



Declan at Bike Ed

# SCHOOL NEWS

# CHURCHILL NORTH PRIMARY

At Churchill North Primary the 1/2 Precht class has been working on writing information reports. They have been learning lots of facts about emus

and have been using those facts to make sentences. Students had to watch a video and brainstorm the information that they heard. Then students had to put

their information facts into sentences.

Once complete, students were able to create their own emu using dry pastels and paper.

Each student chose their own colours, and they came out so wonderfully.

As part of our Inquiry unit looking at and appreciating difference, 1/2P

and 2/3M had a chance to cook some Greek and Indian food to share together and experience other culture's dishes.

There was a range of responses to their taste, but all had fun contributing to the cooking process.





# SCHOOL NEWS

# HAZELWOOD NORTH PRIMARY

With the end of the year fast approaching, we are still working hard to ensure our students are engaged and having a lot of fun along the way. This month has been filled with plenty of fun-filled activities that we are sure our kids will remember for a very long time.

### Coonawarra Camp

Our Year 3 to 6 students attended this amazing camp and had a terrific time. Although it was very cold, all students made the most of this amazing experience. A number of favourite activities they participated in included going on the flying fox (over the water), making damper in the open fire, abseiling down

an enormous climbing frame and even holding a massive snake! It was terrific to see them all return super tired with huge smiles on their faces – true evidence of an amazing camp adventure!

### Green Team

This term our Green Team has been extremely busy and very productive. They have turned our school in to a Nude Food school which helps cut down the amount of plastic in our lunch boxes to combat litter in our beautiful school grounds.

The Green Team has also been making recycled paper in their lunchtimes. They even got their hands dirty

to plant strawberries in our veggie gardens.

### Book Fair

We will be holding our final Book Fair for the year very soon. Our Book Fair Leaders are currently planning for the event. Students love the promotional activities they come up with and thoroughly enjoy browsing the shelves to find new books to buy.

### Remembrance Day

Our wonderful Kaye and School Captains, Brooke and Lucy, respectfully represented our school at the Remembrance Day presentation in Morwell. We also commemorated the day at school by completing

activities in class and stopping for a minutes' silence at 11am.

### Halloween Art Competition

All students were provided with the opportunity to participate in a fun Halloween Art Competition during one of their Art sessions. Students were challenged to complete a Halloween inspired piece using just black paper, metallic markers, textas and coloured paper. The designs that were created were outstanding.

Students from other grade levels voted for the winners. It was a real struggle to only pick one winner from each class! Well done to all

students who took on the challenge and entered their work. Congratulations to our selected grade winners:

- 5/6S Declan Burns
- 5/6B Hudson Amos
- 3/4A Jessie Ing
- 3/4R Koah Jeffery
- 1/2C Sammy Armstrong
- 1/2M Memphis Wilkinson
- F/1M Chase Hickman
- F/1X Huon Samblebe

### Special Visit

This term, our Year 3 to 6 students were lucky enough to listen to the extremely talented archer, Astin Darcy from the Victorian Institute of Sport, present a talk.

He shared lots of interesting information with

our students. It was such a wonderful opportunity for our students to learn from such an inspirational person. Thanks very much for the visit Astin!

### State Championships

Our amazing Taj Makepeace has been at it again! He competed in the Track and Field at the State championships this term and made it to the Top 8 Final.

He placed 7th overall and jumped a Personal Best of 3.98m. What a terrific achievement; we are all so very proud of you!

Keep up the great training and hard work because who knows what 2023 will have in store for our little legend Taj!



Top Left Liam, Harri, Aston, Lucas G, Jack Riley D. holding the snake at camp.

Top Right: Halloween Winners. Back Row Koah, Declan Hudson. Front Row Huoin, Sammy, Chase, Memphis

Middle Left: Happy Campers. Josh, Ryan, Tex, Ruby, Georgie, Hudson, Bailey, Rilen.

Middle Right: Green Team Macy, Maddi, Roman, Mei, Spencer, Malakai.

School Captains at Remembrance Day, Brooke and Lucy

Taj Makepeace at State Championships



# SCHOOL NEWS

# KURNAI UNIVERSITY CAMPUS

## Kurnai College, University Campus 2022 Graduation

It was fabulous to be able to send our Year 12 students off in style on November 16, with our graduation evening at the Gippsland

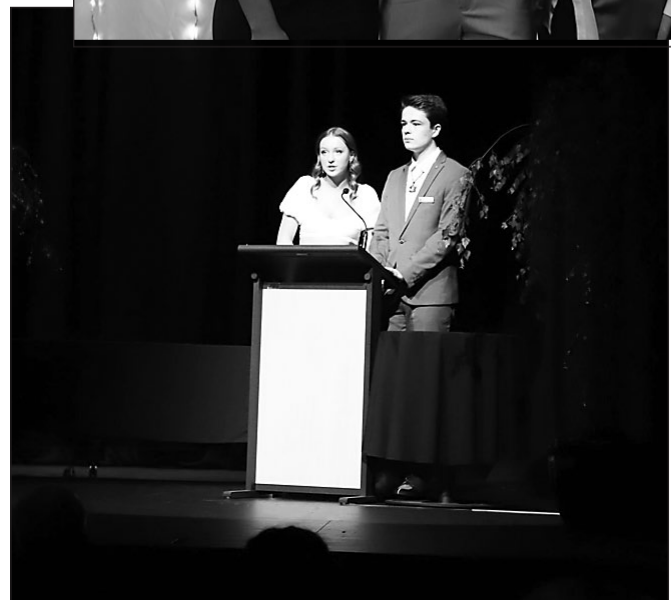
Performing Arts Centre. Students, families and staff had a fantastic night and it was great to be able to celebrate the achievements of students. We wish them well for their future endeavours.

## Koorie Graduation

We wish to congratulate our students who celebrated their graduation at the Koorie Graduation night.

Koorie Education students, families and

staff had a lovely night to commemorate individual achievements over their school life.



# SCHOOL NEWS

## Tech School Excursion

On August 19, 45 Year 8 students attended a Tech School Excursion in Morwell. Throughout the day, students learned about various skills on how the world of work is changing, and the skills that will be most important for them as they move into the workforce in the near future.

Students rotated between different activities which exposed them to industry-

changing technologies and new ways of problem-solving.

The sessions addressed how the world is evolving with new technologies and how they could be sometimes disruptive and why it matters.

Students excitedly watched the video on the current new technologies available around the world. We were impressed with students asking critical questions about

the impacts of developing technologies. Students were amazed by how drones took over agriculture and how the technology is helping to manage crops' growth. This short session allowed students to think about how different industries are being changed by technologies and why it will matter to their future careers.

Students were also taught how to use online software

to code robots to make them security guards for a factory. Students worked on this project by actively listening for instructions. Watching the results of their coding created self-fulfillment.

Next, students used an app on the supplied iPads to create logos for their friends and learned how these logos can be printed through a laser cutting tool. Many logos were printed using small pieces of wood.

This activity helped the students to understand how the technology is easing the work of manufacturing.

Finally, students were given an amazing experience with a Virtual Reality activity.

Students used a VR headset and worked in teams to perform tasks and enjoy experiences such as dancing, riding on a roller coaster, drawing and art in VR, a mission on a space

station, defusing a bomb and more.

When the activities were finished, it was evident on students' faces how enthusiastic they were and how well they enjoyed these activities.

An enjoyable day was had by all, and our students represented our college well



# SCHOOL NEWS

## Tour de Cure visits Lumen Christi

On Thursday November 17, cyclists from the Tour de Cure visited Lumen Christi Primary School in Churchill to speak with the children and make a short

presentation. Riders were given a huge Lumen Christi welcome, cheered on by the staff and students as they arrived to give their presentation.

Riders were keen to give the students information

about lifestyle choices that would help them to "Be Fit, Be Healthy, Be Happy".

The children were keen to learn more about the Tour de Cure, about the training required to participate in the tour and what had inspired

the riders to raise money and awareness through this important event.

The Tour de Cure is a fundraising event raising money and awareness about Cancer Research.

Donations can be made

on their website at <https://www.tourdecure.com.au/>

All children received a pack from the organisers with stickers and colouring-in pages and a special plaque presentation was made to two of our school Captains who

thanked the riders for their visit.

Lumen Christi wishes the riders well in their endeavour to contribute to Cancer Research and finding a cure.



# Strzelecki Bushwalking Club



Saturday November 12 saw members from the Strzelecki Bushwalking Club take part in a coastal walk.

We started on a very sunny day towards Baxter's Beach and walked along until we reached the Powlett River.

We had lunch under some beautiful shady trees at the Powlett Caravan Park.

In a nearby pond, we could hear many Pobblebonk frogs.

These large frogs are found in eastern Australia. They burrow underground during the hot dry weather and stay there until the rain

comes. Due to the large amount of rain, there are a lot of them about now!

This frog is called a Pobblebonk after its distinctive "bonk" call which is likened to a banjo being plucked.

From the Powlett Caravan Park we walked on to the Desalination Plant and had a look at their external areas.

We walked back to the cars via the Bass Coast Rail Trail.

We still have many exciting bushwalking opportunities coming up before Christmas, but the

annual highlight was held on the weekend of December 3 and 4.

The Burge Christmas Camp is on the Wellington River near Licola.

This was a great social opportunity for members which included a walk in the nearby area on Saturday and some fun games around the camp site.

Visitors are welcome on most activities and further information is available on the website at sbwc.org.au, on our Facebook page or by contacting publicity@sbwc.org.au



Latrobe Community Health Service wishes you a

*Merry Christmas  
and a  
Happy New Year.*

**Our Churchill centre will be closed on:**

- Monday, 26 December ■ Tuesday, 27 December
- Monday, 2 January

On all other weekdays, we are open Monday to Friday from 8.15am-5pm, except on Christmas Eve, when we will close at 3pm.