

CHURCHILL & DISTRICT NEWS

Est. 1966

Back To School 2006!



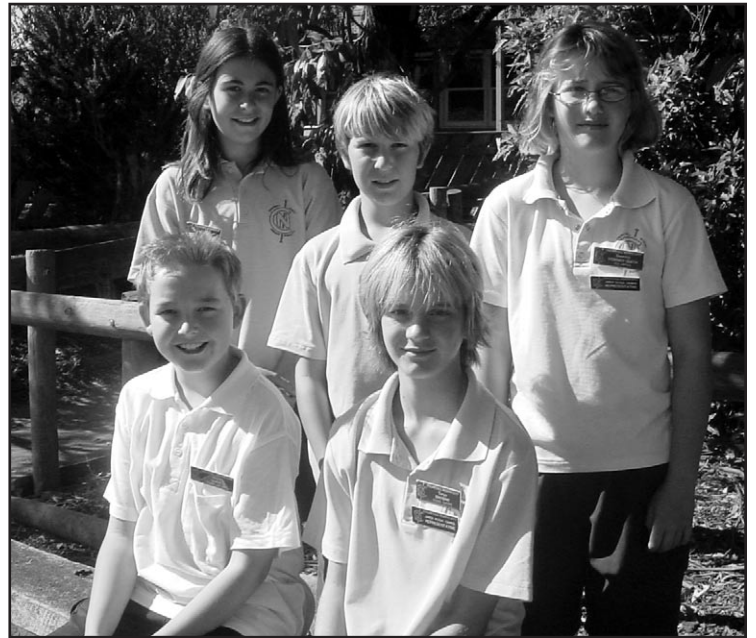
Kurnai College swimming Carnival at Moe Outdoor Pool



Lumen Christi dedicate their new flagpole and flag with Peter McGauran



Churchill Primary School represent Scotland at the Queens Baton Relay in Traralgon



Churchill North School Captains Nick Quinn, Taryn Browne Vice Captains Liesel Ritchie, Ryan O'Donnell and Breanna Downes-Smith

*Turn to pages 6 and 7 for stories



The whole of Hazelwood North School watched the Queen's Baton Relay at Apex Park Moe



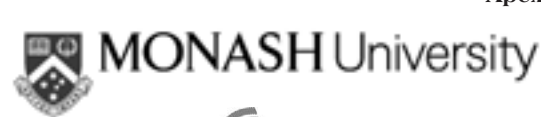
CHURCHILL FESTIVAL
SATURDAY 1ST APRIL
 Free, Fun information For Families
 Turn to Pages 9, 10 and 11 for all the details



Accountants, Taxation & Financial Advisors

DAINBRIDGE FINANCIAL SERVICES

49 Switchback Road
Churchill 3842
Phone: (03) 51 222 033 Fax: (03) 51 222 773
dainbridgegippsland@bigpond.com.au



International Power
Hazelwood

EDITORIAL

The Churchill Festival is almost here. It promises to be a fantastic day with plenty of entertainment. Everything, including food and drinks, are free so we hope residents will enjoy themselves.

We are able to provide everything to visitors at no cost due to our sponsors and an army of volunteers!

‘Letters to the Editor’

Letters to the Editor are few and far between! We get lots of feedback about the paper through word of mouth but nothing in writing.

We would love to hear what you think about the paper, good and bad, what could be improved and also about local issues.

There always seems to be a lot happening in the area and we would like to

hear what you have to say, for example, The Churchill Intergenerational Hub is a multi-million dollar project which will impact on many community groups, pre-schools and kindergartens etc. The Churchill community have also been asked to raise money for the Hub.

Churchill shopping centre, the Civic Gardens Project and the new Gippsland Education Precinct are some of the other issues we would like to hear your opinion about. Letters can be sent to PO Box 234, Churchill or left at one of our drop off boxes - the most central one being housed at Cafe Le’ Macs.

We look forward to hearing from you.

Ed.

Contributions

Articles for publication and letters to the Editor can be sent to: Churchill & District News PO Box 234, Churchill, 3842 Or Email: cdnews@dcsl.net.au

All articles must be submitted by the 30th of each month for publication in the second week of the following month.

Advertising enquires can be addressed to:

Peter Prokopiv Churchill & District News PO Box 234, Churchill, 3842

Tel: 03 5122 2589 or 0402 406 376



Look out for our Article Drop Off Boxes Located at:

Cafe Le Mac’s, Churchill Primary School, Churchill Library and the Co-Operating Church

Churchill & District News

THE CHURCHILL & DISTRICT NEWS IS PRODUCED UNDER THE DIRECTION AND CONTROL OF THE CO-OPERATING CHURCHES OF CHURCHILL. THE CO-OPERATION IS MADE UP OF THE ANGLICAN, UNITING AND CHURCHES OF CHRIST.

Disclaimer

The Churchill and District News wishes to advise that the views or remarks expressed in this publication are not necessarily the views of the Editor or the Management Team and no endorsement of service is implied by the listing of advertisers, sponsors or contributors.



Welcome From The Toy Library



Darci playing with the baby toys and Justin (top) with a duplo set

THE Churchill and District Toy Library would like to welcome new parents, carers and grandparents to the area

We would like them to think about becoming a member of the toy library.

This will be our 20th year in operation. The library is a community asset and we need more members to keep it going

The toy library will be open on Saturday April the 8. Hours open are 10am to 12 noon The library is open every alternate Saturday and is located on Phillip Parade,

opposite the skate park. Why buy large expensive toys when children will play with them for a short time and want something new? The library is the perfect opportunity to borrow a toy for two weeks then return and borrow others. The children and parents will love the range of toys, games and puzzles.

Please come and have a look. For more details contact Simone Gillett on 51223557 or Jo Whitelaw on 51631629. There is a minimal fee and concession holder discounts.

Push-A-Pram

All Mums, Dads, Grandparents and Friends are invited to the weekly ‘push-a-pram event.

Push-a-pram is an event promoting healthy choices through fun activities and exercise. This is the chance to meet new people on a walk through a specially mapped route, starting at 9.30am every Monday at the Glendonald Preschool/Maternal and Child Health Centre (Churinga Drive). Do come along and join in the

fun, you don’t need a pusher or pram to participate.

For further information contact Bev at Latrobe Community Health Service on 5122 0400



Ask About The Hub

Plans for the new Churchill Intergenerational Community Hub, which include the re-development of the Churchill Public Hall are well underway.

The focus of the Hub is to bring together individuals and community groups into a shared location with shared facilities. For many groups that may be interested in eventually relocating to the Hub this may seem a daunting prospect. How can it work? What would we expect?

Kay Jellis from Latrobe City Council is confident that the concept will work and is keen to answer any questions raised by local community groups. Kay is more than willing to arrange a visit to any group to explain what the Hub is really all about and answer questions.

If you or your community group would like to meet with Kay please ring her on 03 5128 5619

The News on the Move

Since the Churchill & District News re-launched in November of 2002 we have been located at Monash University. The Department of Humanities, Communications and Social Sciences (HUMCASS) very kindly provided us with an office and equipment.

This week, with the help of Russell Stewart the office was relocated.

“Having an office at the University is wonderful,” said Val Prokopiv, the Editor. “It makes it a lot easier to work. We really appreciate the support we are given by HUMCASS, Russell and Alan Scarlet,” she said.

Pictured left: Alan Scarlett from Monash University with News Team Member, Tracey Burr, at the Churchill and District News’ new office.



CHURCHILL

ACCOUNTANT

TONY ANTONELLI

NTAA

National Tax Accountants

Income Tax Returns (Fee From Refund)

Financial Advice

GST Assistance

MYOB QUICKBOOKS QUICKEN

OR MANUAL

5122 2058

pba@vic.australis.com.au



Hazelwood Rotary Hosts Visitors From Denmark

THE Rotary Club of Hazelwood was privileged during February to play host to a Group Study Team from Northern Denmark.

The delegation comprising team leader and Rotarian, Aksel Neilsen and team members Anna Marie Christensen, Rikke Mikkelsen, Thomas Hansen and Kristian Petersen are visiting Australia for a six week study of our culture and lifestyle and to learn more about how their individual vocations are practiced in our country.

During their five-day stay in the Latrobe Valley, team members were billeted out to individual Rotarian families to experience first hand the Australian lifestyle.

Some of the highlights of the busy schedule undertaken by the Danish visitors were a welcoming dinner at the Italian Australian Club in Morwell which was attended by

over 150 Rotarians and partners, a Civic Reception hosted by Latrobe City, visits to Power works, Loy Yang Power, Gippsland Aeronautics and Narkoojee Winery at Glengarry.

The group also found time for some sightseeing with visits to Bulga Park Tarra Valley, Yarram, Port Albert, Loch and the Mirboo North brewery. As part of their vocational visits individual members of the team met with local police, army, real estate agents, accountants, financial advisors, furniture makers and the migrant resource centre.

Leader of the Team, Aksel Neilsen, who is involved in local government and aviation, was particularly impressed with his discussions with Latrobe City and his visit to Gippsland Aeronautics.

Rikki Mikkelsen, a Lieutenant in the Danish Military Police was able

to include meetings with the police and the army including a visit to meet her counter parts at Watsonia Army barracks. The other members of the team were also extremely grateful for the opportunity to meet with locals in similar occupations to discuss their roles and compare their vocations with their counterparts.

Hazelwood Rotary President, Aldo Minchella was delighted with the success of the visit and said that the club could be very proud of the manner in which the visit was arranged and implemented.

"It is one of the best aspects of Rotary when we can meet people from other countries and learn from each other cultures," he said.

Pictured above: Danish visitors relaxing at an informal social function during their stay in Churchill.

Can you be a lifeline for Lifeline Gippsland?

LIFELINE Gippsland's 4th Community and Business Leader's Sleepout will be held in Moe and Bairnsdale this year. Notable sleepers, including Felix Pintado and staff from Telstra Country Wide, will be sleeping at Gippsland Heritage Park.

Inspector Jill Wood and three of her fellow police officers will be at the Bairnsdale Aerodrome, and we are seeking further participants to keep them company.

The Sleepout is an important initiative to raise funds for Lifeline Gippsland. For 38 years Lifeline Gippsland has listened to people in crisis, often agitated and upset and it is not unusual for calls to take over half an hour or longer.

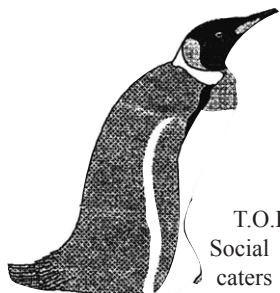
Lifeline provides an essential after-hours service for government and community agencies. Crisis' don't just

happen between 9am-5pm, they occur late at night and at weekends, when most agencies are not available and Lifeline volunteers are there 24 hours a day.

Lifeline's role is to advise on, recommend, listen, support and to let people know that they are not alone. Calls cover a range of issues; grief and loss, relationship breakdowns, substance abuse, domestic violence, financial hardship, mental health issues and loneliness, and for those just needing to talk.

The support of the Gippsland community is required to maintain the 24-hour confidential and anonymous service.

For further information on how to be involved or to make a donation, please contact the office on 5134 8278. Help us to help others.



Friendship and Companionship

T.O.F.S.S. Inc, The Over Forty Social Singles, are a group that caters for single people over the age of 40 years.

We offer friendship and companionship to singles that would like the company of people of the same age and have similar outlooks to life.

T.O.F.S.S. understand how difficult it can be to begin a social life when you find yourself alone due to divorce, separation or death of a partner. T.O.F.S.S. welcome new members and encourage those interested to contact the group.

Some of the events to look forward to in the coming

months are: dinners at various local restaurants, a day trip to a local park for lunch and visit to landscape gardens for morning and afternoon teas and a monthly meeting.

For further details of our organisation and events please contact:

Janet on 5133 9854, Di on 5134 5960, Lorraine on 5134 3242, Jenny on 5174 2717, Norm on 5134 5752 or Barb on 5134 2126.

Alternatively you can write to T.O.F.S.S. Inc at Box 3413, Gippsland Mail Centre, Victoria, 3842.

H.A.Z.E.L.W.O.O.D
HHC
HEALTH CENTRE

Bulk Billing

- * Family Medicine
- * Women's Health
- * Counselling
- * Minor Surgical Procedures
- * Pathology Service
- * Travel & Health Immunisations
- * Industrial Medicals
- * Visiting Paediatrician
- * Visiting Physiotherapist
- * Visiting Surgeon

Consulting Hours

Monday to Friday 8am - 5.30pm

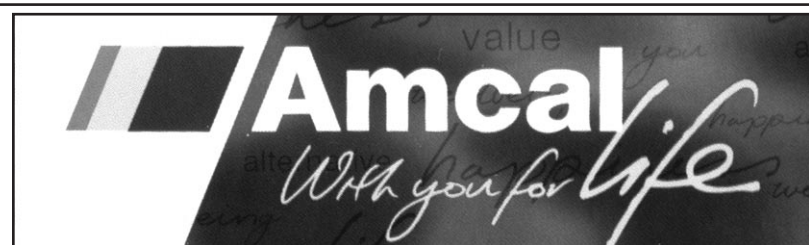
Saturday 8am - 1.30pm

24 hour on call service

Tel: 5122 2555

9a Georgina Place, Churchill, 3842

"Caring Family Medicine"



AMCAL
B Complex
Hi Potency
Mega Value Pack
200 Tabs - 2 FOR
\$34.57



BUY 2 & SAVE
AMCAL MEGA VALUE VITAMINS

AMCAL
Col Liver Oil 275mg
Mega Value Pack
200 caps 2 FOR
\$12.75

AMCAL
Natural Vitamin E
500 IU Mega Value
200 caps 2 FOR
\$38.25

Monday - Friday
8.30 am - 6 pm
Saturday
9 am - 1 pm



AMCAL
Women's Vitamin Value
Pack
Cal-Iron 60 tabs
Evening Primrose Oil
100 Caps
Sorbolene Cream 100g
\$22.95 pack

Telephone:
5122 1390

Podicare

110 George Street
Morwell
Tel: 5134 2375

Winter Stock

Now Available
Huge Range!!!

-Hush Puppies
-Homypeds
-Klouds

-Propet Brands
-Pure Comfort
-Kumfs

Possums of Yinnar Playgroup

POSSUMS of Yinnar Playgroup meet every Tuesday morning of the school term between 9.15am and 11am at the Yinnar Memorial Hall. Cost is \$3.00 and a piece of fruit per family.

Possums of Yinnar Playgroup provides structured skill development activities for children aged 0-5 years. Possums of Yinnar Playgroup provides parents and

carers with a supportive environment where their children can gain and develop skills that will be beneficial in their life.

New families are always welcome to come along and enjoy a cuppa as the first session is free.

For more information please don't hesitate to call Samantha on 5163 1312 or Debbie on 5163 1268.

Church Times

Co-operating Churches of Churchill

Rev. Dr. Bob Brown
Williams Avenue, Churchill.
Tel: 5122 1480
Glenda and Ian Combridge
Tel: 5166 1819
Sunday Service: 9.30am.
Choruses: 9.20am

Lumen Christi Catholic Church

35 Walker Parade, Churchill
Tel: 5122 2226
Father Malcolm Hewitt
Saturday: Mass: 7.30pm
Sunday: Mass: 9.30am
1st, 3rd, and 5th Sundays: Yinnar:
Mass: 11.00 am
2nd and 4th Sundays: Boolarra:
Mass: 11.00am

Churchill Christian Fellowship

Maple Crescent, Churchill.
Pastor Tony or Hermanna Marsden:
5122 2777
Sunday: 10.00am
Ladies Meeting: Tuesday 10.00am

Co-Operating Church Snippets

AFTER the quiet month of January, February saw the parish gearing up for the year's activities, with all groups beginning again.

The Friendship Group met and renewed friendships, with a chat and afternoon tea.

Our worship started off with Cathie leading our all age worship service titled "From Stress to Strength". This service was based upon the Bible verses from Isaiah.

"Do you not know? Have you not heard? The Lord is the everlasting God, the Creator of the ends of the earth. He will not grow weary, and his understanding no one can fathom. He gives strength to the weary and increases the power of the weak."

Cathie focused on our very busy timetables, which usually exhaust us, and often keep us from taking time to renew our batteries from God's generous supply. We were reassured that God can handle all our needs if we but give them to Him so He can give us His strength to see us through.

A monthly service is conducted at Hazelwood House, by our church. The residents who attend appreciate this service.

Some of our congregation attended the Installation of the new Anglican Bishop, Right Rev John McIntyre, at the Anglican Cathedral in Sale. This service is a reminder to the new bishop of his responsibilities as Shepherd of his flock here in Gippsland. We look forward to getting to know him and to benefit from his wisdom.

The Ladies fellowship had their Dedication Service as the start of their new year's program. They have some interesting proposals coming up through the year. Keep your eyes open for those to whom you may feel drawn.

On Saturday 25 February the parish conducted an evaluation and review of our present activities, and thought about some new initiatives. The outcome of this process is a work in progress, but will be of benefit to our parish for the future.

The first Saturday Breakfast for 2006 will be held on 25 March at 7:30am. Yanlin will be our speaker. Yanlin is from China and has been a member of our congregation for twelve months.

On Sunday 26 March we will be having our AGM at 4-6pm.

Chaplaincy Contemplations

Hello everyone,
The University is bustling with lots of students and full car parks. We have a broad mix of school leavers and mature age students in first year.

Orientation week is over and has hopefully introduced these new students to the staff, the environment and each other. Great friendships can be made at University as well as stimulating learning. There is much more to attending University than acquiring a career. It is about thinking deeply and being open to new ideas.

Jesus became excited when he went to the synagogue and he put forward new ideas. They were not well received particularly by those in power. This is often the case in new understandings. It can take a long time for an entrenched way of thinking to change.

At this time of year the Christian calendar is focusing on the time of LENT. A time for reflection on our lives; a time for repentance and the asking for forgiveness; a time to explore the deep meaning of the crucifixion, death and resurrection of Jesus - this Son of Man who took on our humanity and knows us so well.

He who was able to trust in God so much he could offer himself up on our behalf so that we might all be able to repent, have our sins forgiven and really have a sense of hope and possibility in our lives living in the flow of God,

through Jesus Christ.

As Jesus says in Luke, Chapter 8, Verses 28-30

"When you have lifted up the Son of Man, then you will realise that I am he and that I do nothing on my own, but I speak these things as the Father instructed me. And the one who sent me is with me; he has not left me alone, for I always do what is pleasing to him."

As he was saying these things, many believed in him.

We can all know that the Son of Man, Jesus, is with us always, as we are held in the love of God and bathed in the Holy Spirit.

I hope you value this time of Lent leading to Easter as a time to give something up, reflect deeply, recognise your actions for which forgiveness is needed, ask God for that forgiveness, forgive others and give thanks for the life, death and resurrection of Jesus who loved us all so much he gave his life for our release and redemption.

May God bless you through Jesus Christ and bring peace to your heart and mind.

Rev'd Lyn Porritt
Anglican Priest
Chaplain
Monash University
Gippsland Campus

Hazelwood House Hostel Happenings



Joy Allen in the garden she created at Hazelwood House



Velta Rozite presents a cheque to Hazelwood house to go towards a bus.



Flo Robinson celebrating her 95th Birthday

Joy Allen has been a keen gardener all her life, so when she moved into Hazelwood House she set about beautifying the existing garden in the Edison Mission Wing.

This is appreciated by all who view the gardens. Joy is pictured above in the garden she created.

Flo Robinson celebrated her 95th birthday in February. Flo is pictured here with some of the beautiful flower arrangements she received for her birthday.

Velta Rozite, a resident of Hazelwood House recently donated a cheque for \$1000 to go towards the bus fund.

The staff and residents are fundraising to purchase a bus for the hostel.

A Talent In All Of Us

By Christine Penpraze

THERE are still a few vacancies in classes running at the Churchill Neighbourhood Centre, so if you are interested in learning how to do proper lead lighting and have a small project in mind, please call into the Centre and check the class out on Tuesdays from 10 -12.

Folk art has also become a popular class and participants are creating some beautiful works - and to think a number of them thought they couldn't paint at all! It just goes to show that there is talent within all of us - we just need a way of releasing it!

On Thursdays we run two Embroidery classes lead by Pauline Bish, who has had her projects published in nationwide craft magazines. The classes are producing some magnificent pieces of embroidery so once again, if you would like to learn or if you enjoy doing your embroidery in a social setting with others, please come along.

Cora Pal is the tutor for the ever-popular Creative Writing group and following the published collection of writings last year, the group will once again be looking to tease out the skills of local people so they can produce yet another anthology.

If you know of anyone who would benefit by coming along to classes designed for those individuals whose skills in Adult literacy may not always be adequate, then please tell them about our various adult literacy learning

classes. There are even classes designed to incorporate both literacy and computer skills - called on-line learning. These are a fantastic way for people to increase their skills in a number of ways.

For more information please contact Christine at the Centre on 51 22 2955.

Heart Health - understanding strokes and heart attacks

We often see ads on TV about being healthy and learning up on ways of dealing with health issues, so it is timely that at the Churchill Neighbourhood Centre a session will be held concerning Heart Health and understanding strokes and heart attacks.

The session will be presented by Guest Speaker Catherine, from the Latrobe Community Health Centre and will be held on Monday 27th March commencing at 11am.

There is no cost for the session and all members of the community are most welcome to come along and stay for a cuppa afterwards. The Churchill Neighbourhood Centre is located within the Churchill Leisure Centre.

For more information please contact Christine on 51 22 2955.

Morwell RSL Sub Branch Inc.



**BISTRO
OPEN 7 DAYS
LUNCH & DINNER**

All functions catered for
Rooms Available for:
Meetings, Conferences, & Seminars

Entertainment for March

Friday 10th
Saturday 11th
*Sunday 12th
Friday 17th
*Saturday 18th
Friday 24th
Saturday 25th
Friday 31st

Major Tom
Low Profile
Old Time Dance
CoolChange
D.J. Mike
Hound Dogs
Cop-E-Cat
Stoneage

Telephone: 5134 2455

* Old Time Dance Held in Anzac Room, Sunday the 12th March 2pm - 4.15pm

**FREE ENTRY
MUSIC BY KEN AND ALICE RAE**



Thanks to the CFA

THE Churchill Fire Brigade has received several letters and emails, thanking them, and the other brigades in this area, for their mighty efforts in fighting the fires, which plagued the worst of the Fire Season.

The appreciation of the very difficult circumstances, and conditions, under which many of the fires were fought, is evident in the letters written.

Churchill and other brigades are proud of their

efforts, but equally appreciative of the letters expressing the public's thanks.

The main fires which affected the local brigades were the Morwell River Road fire at Boolarra, the Budgere Road fire at Budgere, the Jumbuk Road fire, the Moondarra fire, and the Mills Road fire at Yinnar South.

Your Friendly Local Taxi Company

Servicing Churchill and Surrounding Areas



Wheelchair & Party Vehicle available

Special rates to Melbourne and goods moving

Churchill & District News Photographic Competition 2006

THE Churchill and District News are proud to launch their third photographic competition.

The theme for this year is 'Natural Gippsland'.

There will be lots of prizes and winning entries will be published in the paper. The competition is open to all ages from young to old!

The closing date for entries is 13

April 2006. An entry form and conditions of entry are printed below.

If you require more forms or more information please ring Val on 5122 2589. Good Luck!

Churchill & District News Photographic Competition 2006 'Natural Gippsland' Entry Form



Name: _____

Address: _____

Telephone: _____

Title of Photograph: _____ Category (see below)

The Photograph was taken at: _____

I have read and understood the conditions of entry and agree to abide by them. I certify that this is an original photograph, taken by myself.

Signature _____

Signature of Parent or Guardian if under 18: _____

Entry Fee to be included with Entry Form:

Entry Fees: \$3.00 per photograph (\$2.00 per photograph concession or student)

Please make cheques or postal orders payable to 'Churchill & District News'.

No cash or stamps. Attach consent form if necessary.

Entries to be mailed to:

Churchill & District News
PO Box 234 Churchill 3842

Closing Date 13th April 2006

Churchill & District News

'Natural Gippsland'

Photographic Competition 2006: Conditions of Entry

CATEGORIES: Entries are accepted in 4 Categories:

Prep – Year 6 Year 7 – Year 12 Under 21 21 and over

PRIZES: Prizes can be won in all four categories.

JUDGING: Entries will be judged locally.

1. Each entry must be accompanied with an entry form and state where the photograph was taken.
2. Entries must be in the form of a photographic print. Photographs can be submitted in colour or black and white. They must be unframed. Size 150mm x 100mm (4"x6")
3. Slides will not be accepted. Computer generated images will not be accepted.
4. Multiple entries will be accepted
5. Photographs must be received by 13.04.06
6. The greatest care will be taken with entries, but no responsibility will be accepted for loss or damage
7. Unless otherwise specified, permission to reproduce entries for publicity purposes will be assumed.
8. Photographers will be credited whenever the images are used.
9. Entries from students under the age of 18 must have adult consent.
10. Any persons included in the photographic image must be consenting for the photograph and any subsequent use of the photograph. A consent form must accompany any entries that include images of people. Please ring 5122 2589 to obtain a consent form.
11. Entries will be returned only if they are accompanied by a SAE.
12. The judges' decision will be final and no correspondence will be entered into.
13. Signing of the entry form for this competition constitutes acceptance of these conditions of entry.



Churchill North New Families and Staff For 2006

We would like to extend a welcome to the following families, Brown-Taylor, Peake, Van Gils, Vitale and Wilton-Ward, who are new to our school this year. Their children, Angela, Chris, Colin, Monica, Luke, Justin, Samantha and Mikayla have all started new friendships very easily.

Welcome also to the new staff to our school; Miss Tammy Davey (Grade 2D) and Miss Michele Midgley (Grade 3 / 4 M). This is Miss Davey's very first teaching appointment and we are all keen to work with her to help her refine her teacher skills.

Miss Midgley has taught in a number of schools in and around the Valley and I know she is looking forward to being able to teach in the same school for an extended period.

District Swimming Sports

A very big thank you to Mrs Browne and Mrs Lugton for their help at the District Swimming Sports. All the students swam well and were very excited about their performances.

The results were as follows:- Kacey Stephenson: 2nd 10 yr Freestyle, Taryn Brown: 2nd 11yr Freestyle, 1st - 11yr Backstroke, Ainsley Brown: 2nd 10yr Backstroke, Nathan Lugton: 1st 11yr Backstroke, Leisel Ritchie: 1st 11 yr Breaststroke, 2nd 11 yr Butterfly, Katelin, Ainsley, Kacey and Sharna won the 10yr relay, and Taryn, Kaitlen, Ainsley and Liesel won the 11yr relay.

All the above individual and relay event place getters will be eligible to participate in the Zone Swimming Sports to be held Wednesday March 8 at Morwell.

Congratulations also go to:- Ainsley Browne 3rd -10yr Freestyle, Ryan O'Donnell 3rd 12/13 yr Freestyle and Sharna Smith: 3rd 10 yr Breaststroke.

Family BBQ

What a terrific turn out for our Family



Enjoying the Family Barbecue

Kurnai College Swimming Sports

ON 21 February, Kurnai College held its swimming Carnival at the Moe Outdoor Pool. Several Churchill and Morwell students achieved good results in the different events.

Churchill Students competed and won first place in 50 m freestyle, 50 m backstroke, diving, and the Iron man race. There was a record set for the male 50m backstroke.

BBQ on the evening of Wednesday February 15th. Thank you to the very busy cooks, Barry, Erika, Kerry, Sandy and Meredith, for having so many sausages ready for eating. With the weather so good it made for a very pleasant evening.

Junior School Council

Congratulations to the following people who have been elected as Junior School Councillors: Ryan O'Donnell (President), Daniel Beyer (Vice President), Jackson Chin (Secretary), Taryn Browne (Secretary), Miles Eddy, Katelin Lugton, Ashlee Flanagan, Joel Caile, Jim Alexander, Breanna Downes-Smith. The Junior School Councillors have some great ideas and have already organised Icy Pole days and a Free Dress day.

School Captains

The students of grades 3 - 6 have select the school captains. It gives us great pleasure to let all know that this year's school captains are Taryn Browne and Nick Quinn. The vice-captains are Breanna Downes-Smith and Liesel Ritchie, (sharing the girls' role) and Ryan O'Donnell. Congratulations to the above. We look forward to them representing our school with pride and confidence.

1st Working Bee

Thank you to the small group of parents and children who came along and helped during our working bee on Friday February 17. The afternoon was quite warm and very windy which made working uncomfortable but we were able to complete much of the work that needed to be done. All work was stopped before 6:00 p.m. and the group enjoyed a quiet drink and chat for half an hour before going home. Thank you Alison, David, Janet, Meredith, Nigel and Ray for your contribution to our school during the working bee.

Flag Raising At Lumen Christi

ON Friday 24th March, Lumen Christi had a small ceremony to dedicate the new flagpole and flag, gifted to the school by the Federal Government. Local Member, Peter McGauran came to present the flag. He engaged the children in a discussion about the various part of the flag and its meaning. The Australian flag is a symbol of our heritage, and we should always be proud of it, he stated. He declared that Australia is the best country in the world. It is not perfect, but he urged the children

to strive to make it an even better place.

Peter put the following question to the children. Why is Australia the best?

The children's answers included, it is the biggest island in the world, great people, free country, more space, good environment and no wars.

The ceremony included three children reading out thank you letters to the Government, thank you letters to Mr. McGauran for coming and some prayers conducted by the new Principal Cathy Blackford.



Breakfast Club Donation

THROUGH the generosity of the Latrobe Community Health Service, Bev Knowles was able to arrange a one off donation of goodies for the Churchill Primary School Breakfast Program. Foodworks Churchill supplied the items at a discount cost. The donation was to the value of \$1500. Jo Whitelaw, the school's Welfare Officer was overwhelmed at the generosity, and she and the school captains, enjoyed exploring the various cartons to discover the contents. There was porridge, cereal, tinned fruit, long life milk and Milo. Play lunch snacks of muesli and fruit bars were also included.

Churchill Primary School Breakfast Program caters for the breakfast and social needs of around 35 children five days a week. Breakfast is considered by nutritionists to be the main meal of the day, giving energy and stamina for an active day of learning and play.

The Breakfast Program is part of the school's policy of encouraging healthy, nutritious eating habits. Other

components of this policy are the Active After School Program, serving fruit and water, and the Canteen's menu which sells items of low fat content.



Bev Knowles, Jo Whitelaw, and school captains

New Staff at Kurnai

A great start has been made at the beginning of the year. Students have settled in, quietly and steadily, working from Day 1. The net enrolment has increased by about 18 students.

Information Sessions for parents were conducted on Wednesday 1st. March for the ALPS course-Accelerated Learning Program for Students. Parents who missed these sessions are welcome to contact the school for more information, by ringing Ruth Howard, or Geoff Block on 51323700.

Transition Meetings with feeder schools have already taken place, and a program of transition from primary to secondary school prepared.

School Swimming Sports were held on 21st February. There was a good turn up of students to participate and support their peers. The weather was lovely. The day was enjoyable, and productive with the stars of the sports being Tyson Webb, Clayton Tebb, Vanessa Holcombe, and Chantal Bosma.

Staffing

There are two new teachers on

staff. One is a long-standing member of the Kurnai staff, returning to Churchill after being on the Precinct Staff. Her name is Laurel Kane. She will be Year Ten Co-Ordinator. Within her duties are Careers Advice, and Work Experience.

The second is Andrew Frost, who has trained locally. He will be teaching Physical Education and Outdoor Education.

Both these teachers are great assets to the school.

**The school has a new phone number - it is 51323700.



Andrew Frost



Laurel Kane

Schools News



Yinnar South A Community School

WE have had a great start to the school year and have forty students enrolled.

Thanks to our many parent and community helpers who ensured the grounds and car park areas were maintained and looking great for the start of school. Staff also put in many extra hours of work over the holidays ensuring that the school year would get off to a smooth start, which it has.

The new playground equipment arrived just prior to the end of the school year but we are still waiting for our shade cloth to be erected over both lots of playground equipment, so we are very glad it hasn't been too hot.

Our staffing for this year will be as follows:

- Prep/1/2: Marie James
- 3/4: Katrina Hall
- 5/6 Robyn Wilson
- Music: Lindel Lay
- Technology/Science: Fred Lewis
- Reading Recovery: Marie James
- Physical Education Term 1: Peter Foster
- Integration Aides: Vicki Klebach, Krys Machen
- Business Manger: Cheryl Kerr

Cleaner: Sue
Principal: Robyn Wilson
It is fantastic that a school of our size is able to offer the variety of programs and quality of teaching that we do.

On our last day of school for 2005 we had a special assembly attended by our Local Member of Parliament, Brendan Jenkins.

Brendan presented each of our outgoing grade 6 students with a book entitled "50 Ways to Change The World." Following this presentation Brendan awarded Richard Verheyen with the Yinnar South Primary School Citizenship Award. This is a new award that a grade 6 student will receive at the end of every year for their contribution to Yinnar South Primary School. Richard received a medal and a replica of the large plaque, which the school has on show.

As our school is very much a community school and liaises closely with the local Yinnar South Citizens Association, we wanted our award to reflect "Good Citizenship." Teamwork, helping others, leadership, cooperation and striving to do your best at all times, are qualities that Richard displayed. Richard was a very worthy recipient of our first award.



Enjoying the Baton Relay

Hazelwood North - Short In Time Big On Rich Learning Activities

Term One - Short In Time - Big On Rich Learning Activities

The whole school watched the Queen's Baton Relay at Apex Park Moe. Thanks to our teachers and parent helpers for giving the students the opportunity to take part in this historical event.

Our new playgrounds are in use and have proved very popular.

We celebrated the Commonwealth Games with a Fun Run Relay - all money will go towards developing new sand pit areas.

Buddy Grade activities have started between students in the Prep, One and two Four Five classes.

All grades have started practising for the Yinnar and District Sports to be held in April.

A small group of students are looking forward to being involved in the Kurnai College Music Program.

The teachers and students appreciate the Parent Club donation of \$100 to each grade for games and equipment.

The whole staff participated in A Cluster Professional Learning Day recently. One of the highlights was the opportunity to see the wonderful facilities at the Gippsland Educational Precinct in Churchill.



School and House Captains



School Leaders - Ashlee Kearns, Roger Morris, Adelaide Hann and Harley Lowrie

Churchill Primary School School Leaders and New Teachers

New Staff

CHURCHILL Primary School welcomes back three well-respected staff.

Robyn Edtmaier is returning after a seven year family leave absence. When she was at Churchill Primary School previously, she taught in the 3/4s, 1/2s and Prep. She says she is now meeting younger brothers and sisters of children she taught back then! Robyn has a Grade 3/4.

Melissa Pavey is returning from maternity leave, to teach in the art room. Melissa on previous stays, has been in the art room, taught Indonesian and had Preps.

Michelle Robins also returns from Maternity leave to teach 2 days a week in the 3/4 area.

Halie McDonald and Stacey Helmers are teacher interns who are attached to the school for this year. The school community welcomes all these people, and wishes them well.

School Captains

The Grade 5/6 students have proudly elected their new school captains. This responsible job has fallen to very deserving students who will represent their school extremely well, maintaining the high standard set by previous captains. Before the election, those stu-

dents nominated, had to present their speeches. These speeches were well made and those who heard them felt very proud of their efforts.

They are Roger Morris and Adelaide Hanna, with Vice Captains being Harley Lowrie and Ashlee Kearns.

House Captains

The next week, the election of House Captains took place, with the following results.

Red House- Stacey Day and Chris Annels

Green House- Elizabeth Oakley and Matt Lehrner

Yellow House- Maddison Akkerman and Gene Iorangi

Blue House- Tamsin Fenech and Ben Kearns.

These young people had their skills tested with the Athletics Sports on 7 March.

School Council Representatives

These people have successfully been elected to the School Council for the next two years. Kim Jongerius, Erica Darragh, Natalie Wilkins, Mark Medew, Donna Turpin and Jodie Murdoch, will join Peta Whelan, Paul Comber and Carol Kemp. They are happy to listen to your worries and ideas.

School Swimming Sports

These sports were held on

Wednesday 22 Feb. The stars of the sports for Churchill Primary School were Jess Wain and Tamara Kemp. The school wishes to acknowledge the contribution of staff members Jacqui Maiden and Charlie Twomey, and the parents who helped and supported on the day.

Here is Jess' report to Assembly.

"On Wednesday 22 of February, thirteen children- Gene Iorangi, Shannasai Iorangi, Ben Kearns, Megan Kearns, Joshua Kemp, Tamara Kemp, Bevan Kemp, Jessica Wain, Toni Ipsen, Talica Sokaluk, Madelaine Turpin, Laura Stratford, and Russell Whelan- left school at 9:00am, and walked down to the Leisure Centre, and represented our school in the District Swimming Sports.

Jessica Wain came first in butterfly, second in backstroke, and third in breaststroke.

Tamara Kemp came first in butterfly, second in breaststroke and second in freestyle.

Jessica and Tamara were the only ones at Churchill Primary School to make it in to the zones."

All the children thank Mr. Twomey, Mrs. Jones, Fluer Iorangi, Carol Kemp and Miss Maiden for organising and helping with the District Swimming Sports.



Mrs Melissa Pavey (above)
Mrs Robyn Edtmaier (right)



Churchill Primary School Council

Queen's Baton Relay Cultural Concert At Traralgon



Churchill Primary School represents Scotland at the Queen's Baton Relay



LAST November, Churchill Primary School was asked to become involved with the Queen's Baton Relay Cultural Concert. This concert was to welcome the Baton, as it arrived at Traralgon. The idea came from Latrobe City Council and Anglicare.

Ten schools were asked to represent ten different Commonwealth countries. At the inaugural meeting, school representatives drew out a country's flag and asked to present a ten minute item which show-cased that country.

Churchill Primary School drew out Scotland. Other schools in the Latrobe valley drew out the countries of India, Malaysia, Guyana, Nigeria, New Zealand, Canada, Malta, Jamaica and Australia.

The idea was to give a spread of cultural styles, and variety of musical presentations. Students spent their lunchtimes, and after school time for the last three weeks, rehearsing, to perfect their item. The students who volunteered learnt the Highland Fling, no mean feat, and several Scottish songs.

To make the costumes, staff and parents went to Op Shops and asked for community support. A working bee was held last week to outfit all the performers in Scottish garb.

On Tuesday 28 February, the students, their teachers and helpers trooped off to Traralgon. After a rehearsal at 11:00am, the children were able to go in the pool for a swim, participate in the activities supplied by the Awakening Group, enjoy the sausage sizzle, and free give-aways from Telstra, until 3:00pm when the concert began, through to 5:00pm when the Baton arrived.

Scotland was the first country with a stirring rendition of "Scotland the Brave", "Loch Lomond", and

"Donald, Where's Your Trousers?"

The announcer prefaced the performance by speaking of Scottish heroes like William Wallace- Braveheart, Sean Connery, actor, and Billy Connolly, comedian, saying the Scottish people are renowned for their resilience, ingenuity and fortitude in the face of adversity.

The students were accompanied by two pipers and a drummer from the Caledonian Pipe Band, Mr.Charlie Twomey on mandolin, and Mr.Rod Burney, and Gene Iorangi on guitars.

Leading the dancers, and principal choreographer, was Brittany Webb, a former Churchill Primary School student, who currently attends Kurnai College.

Churchill Primary School wished all the Scottish athletes in the Commonwealth Games, good luck, resilience and fortitude in the face of adversity and adversaries against whom they will compete.

Australia was the last school to perform, as the Baton arrived.

Then all the schools combined to sing "Advance Australia Fair" together. It was a great experience for all those who participated.

The school wishes to acknowledge the huge amount of work put in by teacher Helen Dyson, the performing students who represented the school so brilliantly, the parents and community who helped in so many way, the accompanying musicians, Charlie Twomey and Brittany Webb.

Latrobe City Brass Band

Morwell Citizens Band Inc. is now known as Latrobe City Brass Band Inc. We are in the process of equipping all our members with new uniforms and updating all signage.

We have already had a busy schedule of events, including playing in the Walhalla Rotunda to much acclaim and Australia Day functions.

We have a a very busy schedule ahead which includes playing for the Churchill Festival on April 1 and at the Commonwealth Games Live Sit.

Though our name and uniform has changed we are still the same friendly group and would love to have some new members join us. Instruments and tuition are provided for Learners for a small fee.

Visitors are always welcome to come along to our practice evenings - Morwell Town Common Pavilion Bandroom, near Community Playground, 7.30pm to 9.30pm each Tuesday.

If you would like to join us at one of our performances we will be playing at the following: March 11, Moe Jazz Festival Street Parade, March 19, Walhalla Podium, Saturday March 25 at 1pm, Commonwealth Games Live Site, Moe Racecourse. Saturday April 1, 11.00am at Glendonald Park, Churchill Festival, Churchill, Sunday April 16, Port Albert 150th Anniversary Celebration and Sunday April 23, 11am Twin City Archers - Archery Championships Toners Lane, Morwell.

Old Time Family

The next Jeeralang North monthly old time family dance will be held in the Jeeralang North Hall on Friday 24 March.



Dancing from 8.00 pm to 11.30 pm

Music: Harmony Plus

Admission: \$5.00

Door Prize & Novelties



Please bring a plate. Sandwiches supplied by the Committee. More details from Secretary: Zelma Mildenhall Tel: 5166 1264

**CQU
AQU
FBAH
E**

Shop 1

**Mid Valley Shopping Centre
(Next to Village Cinema)**

INTRODUCING

NEW MENU

**Lunch and Dinner: Monday to Sunday
Breakfast Saturday and Sunday from 8.30am**

**SPECIAL MOVIE MEALS DEAL. CATERING AVAILABLE (Office Party's, Special Events)
Also taking phone orders for people on the move. Takeaways Monday to Friday, Lunch only**

FOR GREAT ATMOSPHERE AND FOOD, BOOK NOW

5133 0777

CHURCHILL FESTIVAL

Saturday 1st April 2006

Glendonald Park Churchill 10.00am - 3.00pm



Heaps of FREE Entertainment
FREE Sausage Sizzle
Everyone Welcome
FREE Bus Service

(Bus Timetable See Page 10)

Churchill Festival Proudly Brought To You By:



coates hire



- Co-Operating Churches in Churchill
- Churchill Primary School
- Latrobe Regional Hospital
- Foodworks
- Churchill Scouts
- Latrobe Community Health Service
- West Gippsland Catchment Management Authority
- Red Cross
- Latrobe Community Health Services
- Local Traders

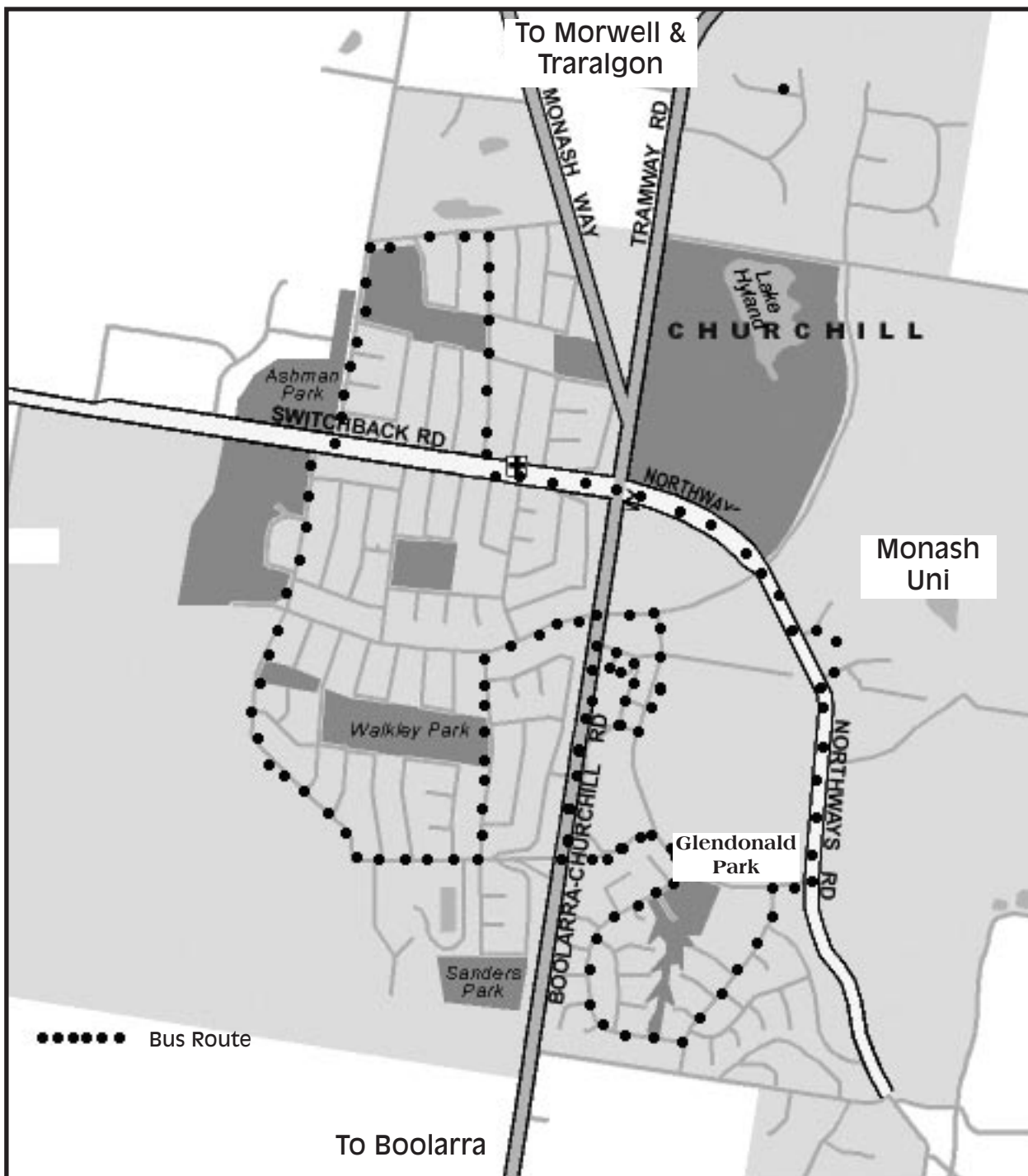
FREE

BUS TIMETABLE

FREE

Bus Leaves:								
Glendonald Park	9.45am	10.45am	11.15am	11.45am	12.15pm	12.45pm	1.15pm	1.45pm
Amaroo Drive	9.47am	10.47am	11.17am	11.47am	12.17pm	12.47pm	1.17pm	1.47pm
Churinga Drive Near Kinder	9.49am	10.49am	11.19am	11.49am	12.19pm	12.49pm	1.19pm	1.49pm
Monash Bus Loop	9.52am	10.52am	11.22am	11.52am	12.22pm	12.52pm	1.22pm	1.52pm
Switchback Road	9.55am	10.55am	11.25am	11.55am	12.25pm	12.55pm	1.25pm	1.55pm
Coolabah Road	9.57am	10.57am	11.27am	11.57am	12.27pm	12.57pm	1.27pm	1.57pm
Between Box Crt & Elm Crt	10.00am	11.00am	11.30am	12.00pm	12.30pm	1.00pm	1.30pm	2.00pm
Manning Drive Ritchie Road	10.01am	11.01am	11.31am	12.01pm	12.31pm	1.01pm	1.31pm	2.01pm
Manning Drive cnr Townsend Street	10.03am	11.03am	11.33am	12.03pm	12.33pm	1.03pm	1.33pm	2.03pm
Manning Drive English Reserve	10.04am	11.04am	11.34am	12.04pm	12.34pm	1.04pm	1.34pm	2.04pm
Manning Dr cnr McLean Ave	10.05am	11.05am	11.35am	12.05pm	12.35pm	1.05pm	1.35pm	2.05pm
Canterbury Way cnr Quigley Cres	10.07am	11.07am	11.37am	12.07pm	12.37pm	1.07pm	1.37pm	2.07pm
Lumen Christi	10.08am	11.08am	11.38am	12.08pm	12.38pm	1.08pm	1.38pm	2.08pm
Williams Ave crn Walker Pde	10.09am	11.09am	11.39am	12.09pm	12.39pm	1.09pm	1.39pm	2.09pm
Howard Ave cnr White Pde	10.11am	11.11am	11.41am	12.11pm	12.41pm	1.11pm	1.41pm	2.11pm
Howard Ave crn Roy Crt	10.13am	11.13am	11.43am	12.13pm	12.43pm	1.13pm	1.43pm	2.13pm
Switchback Road btw Heesom Crt & McInnes Crt	10.14am	11.14am	11.44am	12.14pm	12.44pm	1.14pm	1.44pm	2.14pm
Firmin Road	10.16am	11.16am	11.46am	12.16pm	12.46pm	1.16pm	1.46pm	2.16pm
McDonald Way	10.18am	11.18am	11.48am	12.18pm	12.48pm	1.18pm	1.48pm	2.18pm
Hazelwood Shopping Centre	10.20am	11.20am	11.50am	12.20pm	12.50pm	1.20pm	1.50pm	2.20pm
Shell Garage Bus Stop								
Monash Way	10.21am	11.21am	11.51am	12.21pm	12.51pm	1.21pm	1.51pm	2.21pm
Bus Arrives								
Glendonald Park	10.27am	10.27am	11.57am	12.27pm	12.57pm	1.27pm	1.57pm	2.27pm

CHURCHILL FESTIVAL HOW TO GET THERE





Churchill Festival

On Stage

Peter Gray & The Blues
Club
D Road
Bob Cooper

Kurnai College Band
Latrobe Valley Rockers
Latrobe City Brass Band
Latrobe & Francis Orchestra

Around the Ground

FREE Sausage Sizzle

Sporting Groups

Demonstrations

Face Painting

Awakening

SES

Lucky Dip

Clowns

CFA Smoke House

Ulysses Club

Schools Displays

Gippsland Historic

Car Club

Friends of Morwell

National Park

Churchill Neighbourhood

Centre

Gippsland Physiotherapy

Group

Landcare

International Power

Hazelwood

Helimed

G.A.R.D.S

Latrobe Community

Health Services

Latrobe Valley

Astronomical Society

Oxfam/Community Aid

Abroad

Latrobe City Council

Churchill & District Toy

Library

Koala Kinder, Owl &

Pussycat Playgroup

Gippsland Trades &

Labour Council

And MORE!!!!!!



Free Fun inFormation For Families

Don't miss this one.



Ute Show and Country Night only at Churchill Saloon. April 1st 2006

WOW, this will be huge, look at the day's events. UTE SHOW, Trophies, Country Night, with Travis & Steve together on one night. Plus heaps of other great prizes & giveaways on the night & not forgetting Churchill Salons NEW OWNERS Blanchy & Toni there to be a part of it as well.

Highlights

- Ute Show at Churchill Footy Club
- Convoy back to Churchill Saloon
- Presentations & Trophies at Churchill Saloon after the Ute Show 6pm
- Travis Sinclair and Steve Forde & the Flange on stage from 10pm.

Supported by Churchill Saloon, Cruisin' The Country, Our Own RAMBLIN GAMBLER "DJ RICHO" & B&B Country Ute Club

.....
\$5 per category to enter the Ute Show, with proceeds going to The Cancer Foundation, and tix to Country Night only \$28. On Sale now 5122-1225 or at the door

Start Time: 2pm at Churchill Footy Club

Event Date: 01/04/2006



****CHILDREN'S CORNER****

LIONS BIRTHDAY CLUB

Proudly sponsored by the
Lions Club of Churchill & District Inc.

Hi Kids,

If you are under 12 years old you can join the club. Ask your Mum, Dad, Guardian or Carer to ring the Editor of the CHURCHILL AND DISTRICT NEWS on 5122 2589 or write to

LIONS BIRTHDAY CLUB
PO BOX 110
CHURCHILL 3842



with your NAME, ADDRESS, PHONE NUMBER, BIRTHDATE, and whether BOY or GIRL

The lucky "Birthdayites" for January were
Samantha Blanch and Jordan Curtis,
and for February were
Luke Bertoli and Ashlee Smith.

BIRTHDAYITES FOR MARCH

Jay BARRY	6 years
Brodie BENNETT	7 years
Jack BENNETT	9 years
Cameron BIANCONI	6 years
Rowan FLAKE-FARRELL	8 years
Jye MAY	9 years
Joshua McCORD	8 years
Bayley McLURE	4 years
Tristan TURPIN	8 years

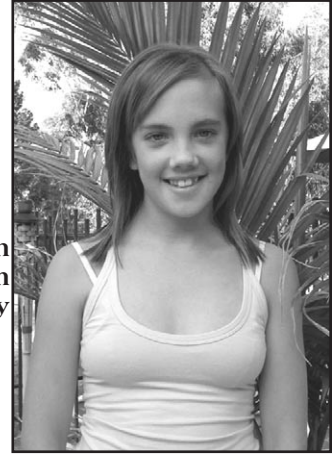
The randomly chosen "BIRTHDAYITES" for March are
JOSHUA McCORD and TRISTAN TURPIN

Congratulations, you have each won a \$15 voucher for Churchill Newsagency. We will contact you soon.

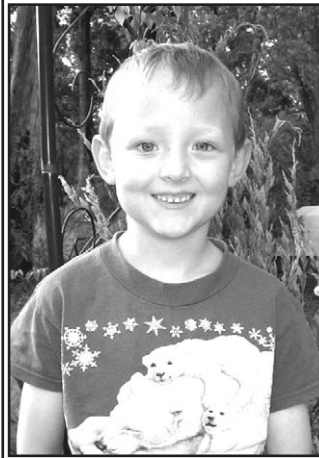
BIRTHDAYITES!



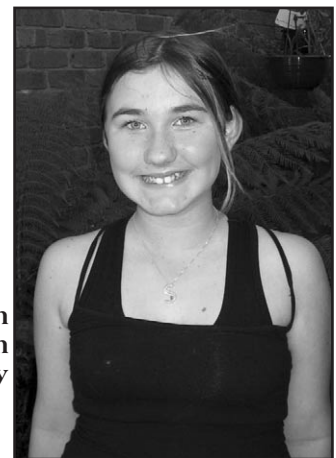
Jordan Curtis
7 years on
21st January



Ashlee Smith
12 years on
9th February



Luke Bertoli
7 years on
23rd February



Samantha Blanch
11 years on
16th January

The January and February "Birthdayites" were all smiles as they were each presented with \$15 vouchers for Churchill Newsagency by John Barker from the Lions Club of Churchill & District. They were chosen at random from the January & February lists. This so you also have the chance to be a lucky "Birthdayite". Remember you now have two chances of being chosen.



Find the Words
This month birds are
the theme

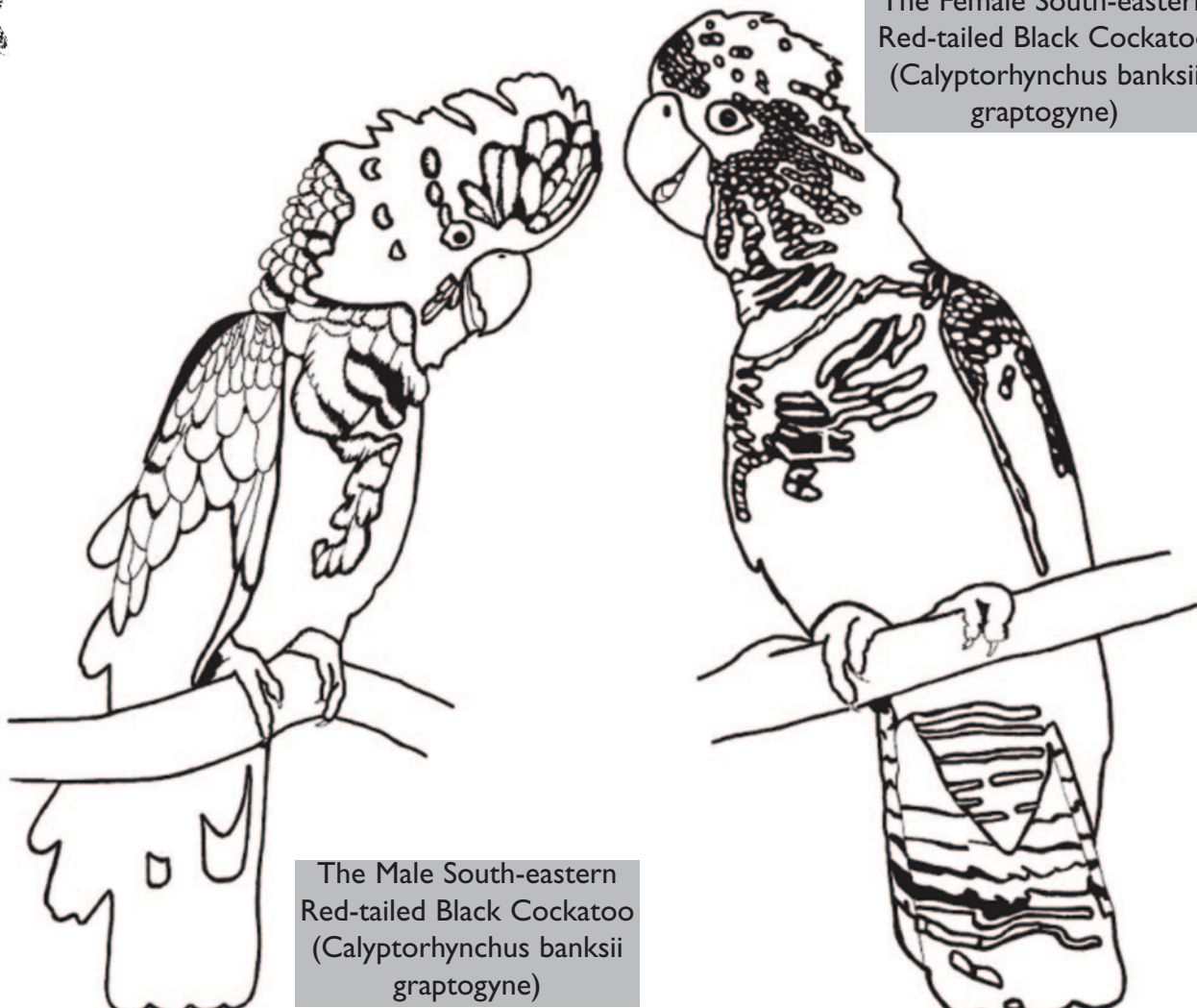


The South-eastern Red-tailed Black Cockatoo is the Official Mascot of the Melbourne 2006 Commonwealth Games

C	B	W	R	E	K	C	O	M	O
N	R	U	O	F	W	T	B	U	W
L	H	A	Z	R	I	V	L	L	R
N	N	I	N	Z	C	L	W	E	O
O	E	C	O	E	A	O	N	A	B
C	V	T	J	Q	R	R	L	W	I
L	A	G	U	R	E	F	D	A	N
A	R	A	A	A	W	M	I	Y	J
F	I	P	G	A	D	C	G	N	K
L	S	L	O	R	I	O	L	E	J
X	E	S	W	A	L	L	O	W	H

- | | | |
|---------|--------|---------|
| Buzzard | Gull | Quail |
| Crane | Jay | Raven |
| Crow | Lark | Robin |
| Eagle | Mocker | Sparrow |
| Falcon | Oriale | Swallow |
| Finch | Owl | Wren |

The Female South-eastern Red-tailed Black Cockatoo (Calyptorhynchus banksii graptogyne)



The Male South-eastern Red-tailed Black Cockatoo (Calyptorhynchus banksii graptogyne)

The Scotts of Heesom Crescent

By RUTH PLACE

Carol Hedley arrived in Australia with her parents in 1950 from England. They lived at the Yallourn Migrant Hostel for a while, in the round Nissan huts, which were very hot during the summer. After a while they moved to Monash Street in Morwell, which was a new area of Housing Commission homes - no roads, no footpaths, no fences - just homes in the middle of paddocks! It was a similar situation in the move to Churchill.

Carol is the oldest of three girls, the other two being born in Morwell Hospital in 1953 and 1956. Carol started school at Commercial Road Primary School, and when she reached Grade 4, Tobruk Street Primary School was opened. Carol went there before going on to Morwell High School, the first year it opened with Forms 1 and 2. In Form 6 Carol met Raymond Scott.

Raymond was born at Yallourn Hospital and lived at Hernes Oak until after their marriage. After Hernes Oak Primary School Raymond went to Yallourn Technical School. He then started a plumbing apprenticeship with the SEC, finishing it with Jack and Tom Miller. It was during his final year as an apprentice that he met Carol at a dance. Carol's girlfriend was going out with Raymond's best mate, and she set them up on a blind date. Carol says they just clicked and Raymond was the only boyfriend she ever had.

Carol worked at the Latrobe Health Services in Morwell, and her parents were founding members. Raymond was with Nagle and Higginson, working as a plumber on Commission houses in Morwell.

The two decided to marry at St Mary's Anglican Church in Morwell, with the service conducted by Archdeacon Knife. As Carol was under 21, she had to have her father's permission to marry. Her father gave his consent with the proviso that they marry on his birthday. Of course they agreed. On that particular Saturday, Collingwood,

(Raymond's team) was playing St Kilda, (her dad's team). There were comments flying back and forth at the reception as to the virtues and otherwise of each team. This all made for a friendly and happy occasion. Terry Larkin was the driver of the wedding car - Terry and Raymond were mates through school and sports. After their marriage, Raymond and Carol lived in a flat in the back yard of Raymond's Great Uncle in Hernes Oak.

On 1 September 1966, Carol and Ray moved into their new house in Churchill. Why Churchill? At the time the policy was that in order to purchase a house in Morwell you had to have children, and the Scotts wanted a house before starting a family. Carol thinks the similar policy for Churchill had changed, because houses were not selling as quickly as hoped. The low deposit of \$200 was also an incentive.

Carol remembers the difficulties associated with having no shops, but appreciated the fact

that Mr Koedijke delivered the milk, and bread was also available by delivery. Carol also recalls that although the footpaths and roads were made when she and Raymond moved in, the "garden" was clay. She had to catch the bus to work in Morwell for the first 12 months. Carol also worked in Ollquists for a week or two as they had a Latrobe Health Services agency in their pharmacy.

Reverend Arch is remembered as he paid an early visit to bring the Churchill News. Raymond and his brother were varnishing the floors, so although the Churchill News was welcomed, it was a somewhat inconvenient time.

Life settled down into a routine until Raymond decided to give up plumbing, and took a job as the maintenance man at Homepride Bakery in Catherine Street, Morwell. As the 3 boys were born - Brian in 1969, David 1972 and Steven 1974 - Raymond began delivering bread

for



Carol & Raymond Scott

Homepride. Later he went to work for himself, delivering bread for Snowqueen Bakeries, in his own panel van. During that time he also worked as a barman at the Morwell RSL and the Latrobe Valley Hotel (now the Merton Rush.) Following that there were several other changes of jobs, including working for himself as a plumber when the Churchill Hotel was built, with Simon Carves at Hazelwood, and lastly at the SEC in Morwell. When the downsizing was occurring, Raymond took a package and started working for himself again. His main work was maintenance at Energy Brix. During this time he dropped a toolbox on his leg and broke his ankle, and was then unable to work. From that time on Raymond seemed to go downhill, being diagnosed with Scleroderma, which affected the joints and circulation. Friends, neighbours and family remember Raymond as having a great vegie garden - with beans for Christmas and tomatoes soon after. They also remember his very helpful nature and many kindnesses done with his cheerful, quirky smile, which came from the heart. As mobility up and down steps became an issue, Carol and Raymond moved from Heesom Crescent to Williams Avenue. Their oldest son Brian bought the Heesom Crescent house and still lives there today!

Ray's spirit was not daunted however, and with the boy's and John Ryan's help, did many re-makes to various areas in the garden, re-establishing his loved vegie garden. Unfortunately, Ray succumbed to his illness and passed away in 2001 and is sadly missed. Carol remains in the house with Monty the cat who is great company. She is treasurer of the Churchill Tennis Club, helps out with Churchill and District News, and is on the fundraising committee for the Gippsland Cancer Care Centre.

Carol also enjoys going to Folk Art, walking, and catching up with friends for lunch.

Carol was a stay-at-home Mum until Steven started school, then she gained casual employment as a receptionist at GIAE. After a stint as tea lady, she went back to reception for 2 ½ days a week, then full time until she retired in 1999.

The three boys were all born at Morwell Hospital. Carol tells of visits to doctors and dentists in Roy Court, Blackwood Crescent, and above the shops in the shopping centre. Infant Welfare visits were made to Roy Court and rooms under the Town Hall.

Kinder and school were very close and convenient. Brian went to Watson Park Kindergarten, then Churchill Primary School. David and Steven were in the time of ballots. David went to Walkley Park and Steven to Watson Park for 2 days only.

It was fun going to Carols by Candlelight in the old shopping centre, remembers Carol. One special event was in 1980 when her 85 year old grandmother came from England for Christmas.

Brian Scott was born at the Morwell Hospital in 1969 and has many memories of Churchill in the early days. A particular one was going over the then, single carriageway Switchback Road, and playing in the paddocks where Churchill North is now situated. "It doesn't seem like that long ago," mused Brian. Heesom Crescent was a really good street with all the kids - mostly boys of his age. Fond memories are held of his great mates from those days - Warren Spiteri, Peter Binder and Kelly, Paula and Darren Bruce. The kids played in the street, kicking the football and at cricket. The park was also a much-used venue. Carol says, "There were not the worries then that there are now, and we didn't even lock our doors."

Mr Whippy's tinkling tunes were a familiar sound at weekends for many years. Brian recalls that one day Steven raided his Mum's purse and shouted all the kids in the street an ice-cream!

The Scott and Spiteri families spent many happy times together. One such occasion was shared at the Binder's Inverloch beach house. Melbourne Football Club was there participating in a training weekend. Ron Barassi was coach and a hero to the youngsters. Raymond went over to Ron and told him he had some young admirers and invited him to come over and meet the families. Ron was happy to do so, and he had his photo taken with everyone, making a lasting impression.

Brian loved his sport, playing soccer, football and tennis, and still plays tennis for Churchill. He aspired as a child to play as well as Mum, which he did from about the age of 12. He declares his Father cheated at backyard cricket, letting the kids have another chance when they



were out. This attribute is fondly and humorously remembered.

One day while in early Primary school, Brian says the large fire hydrant at the Howard Avenue and Coleman Parade corner sprang a huge leak. It was his Dad who turned up to fix it and Brian says he was surprised. He knew his Dad worked as a plumber but had never seen him at work. Brian was so pleased and told all the kids "That's my Dad!"

On Brian's 10th or 11th birthday he had a party at McDonalds and many chocolate sundaes were consumed. That night Brian vomited all night, much to his friend Warren's horror. Mum was not sympathetic, saying he must have eaten too much. However, Brian ended up at the doctors and the result was the removal of his appendix! When he returned to school his teacher and classmates had made a sign - "Welcome back appendixless Brian!" He was very chuffed. Brian says he loved Kinder and Primary School.

Brother David was born on 29 February 1972. It is estimated he is now officially 8 years old. David spent 12 months on a Rotary Youth Exchange program in Finland, after finishing his HSC. He married Mele Lui from Morwell, and they have 2 lovely daughters, Joanne Leah and Amanda Rae.

Steven has moved to Queensland and he and his partner Renee had their first child in October. He is called Mathew Ray. Steven is working for his cousin Ray Scott who runs his own painting business and has given Steven an adult apprenticeship.

Brian works at Carter, Holt and Harvey sawmill (formerly Brown and Dureau) on Tramway Road, where logs are prepared and sawn into boards. He has been there since he was 17, after he left Maryvale High School. He spent a couple of months on the dole then Dad said, "I have had enough! You are going to get a job." He took him to see his cousin Norm Backman at the Mill. Brian got a job which he describes as very rough in those days. He was expected to work very hard and pull his weight. It was all manual labour, compared to today where it is fully automated.

Brian lives with his partner, Danielle Arnold, who works in the family business at Gippy's Office Supplies. Brian has a son, Christopher, who was born in 1988. Brian says he was a very young parent.

In answer to the question "Do you have any regrets about living in Churchill?" there was a resounding NO. "Otherwise we wouldn't be still here," says Carol.





Wattle Club Goes to Walhalla

THE happy members of the Wattle Club have enjoyed an outing to Walhalla.

The bus drove them via Tyers, to Walhalla, where they had morning tea at the Northern Gardens Camping area. On the menu was a bag of chips and chocky biscuits.

From there they retraced their steps [wheels], to the main picnic

area for a barbecue lunch of home-made hamburgers with the lot, followed by chocolate puddings!

With hunger pains satisfied, they proceeded to the station to catch the stream train back to Thompson Station. There the bus picked them up, for the return journey, which was made through Erica. Sightings of the bushfire affected areas were hor-

rifying. The devastation was pitiful to see. Even so the group enjoyed the day thoroughly.

Other activities in which the clients have participated this past month have included chocolate making, indoor soccer, cards and Rummykin. A favourite activity is Trivia Naughts and Crosses.

Plants in my Garden Eucalyptus calophylla

By Mike Beamish

Family: Myrtaceae

Derivation: Eucalyptus: From the Greek, EU, meaning well, and kalyptos, concealed, referring to the bud cap which covers the stamens and falls away when the flower opens.

calophylla: From the Greek, kalos, beautiful, and phyllon, a leaf.

Common Name: Marri, Pink Flowering Gum.

Distribution: This plant is indigenous to Western Australia, widespread in sandy soils along the coast and nearby ranges, but widely cultivated throughout Australia.

Description: A medium-sized tree to 20 metres tall with a spreading, shady canopy. The trunk may be up to 1.5 in diameter, with grey-brown flaky, fibrous bark that darkens with the age of the tree. Mature leaves are broadly lanceolate to ovate, up to 18cm long and 5cm wide, glossy green above with paler beneath, with a prominent mid-rib and fine, parallel lateral veins.

Flowers are usually pink, sometimes paler, about 4 cm in diameter, in terminal clusters of up to dozen flowers, appearing in late summer and autumn. Fruits are large urn-shaped woody capsules to 5 cm long.

Opinion: I've chosen this tree as my Plant of the Month simply because it is in full flower at the moment. Flowering is usually spectacular, although it varies from year to year, and is a major drawcard for a multitude of birds and insects that feast on the copious nectar produced.

Red and Little (Brush) Wattlebirds, New Holland, Crescent, White-naped and Yellow-faced honeyeaters, and Eastern Spinebills all compete with a bees and wasps, both native and exotic, and Imperial White Butterflies. Although not as vivid as the bright orange or red blooms. Of *E. ficifolia* (Red-flowering Gum), it is still eye-catching. I seem to recall from the deepest, darkest recesses of my memory that some knowledgeable authorities regard *E. ficifolia* as an aberrant subspecies of *E. calophylla*.

My specimen is one of the few original plants left on the block (there are 4 others, 3 eucalypts and 1 bottlebrush) from when we purchased it back in 1984, mainly because all the oth-

ers were exotics.

Back then, it was a spindly shrub less than shoulder height, planted in the middle of the lawn in the backyard. Now it is about 10 metres tall with a trunk about 45 cm in diameter, still in the same place, but now with a garden bed built up around it, dividing the upper and lower sections of the backyard.

It plays havoc with my vegetable garden, so much that the top bed is virtually unusable due to root invasion and subsequent water theft. Still it is worth its disadvantages and at least it gives me somewhere to put the fruits of my endeavours in the nursery!



Are you interested in Joining the Morwell Centenary Rose Garden Advisory Committee?

Latrobe City Council invites nominations for membership of the Morwell Centenary Rose Garden Advisory Committee. The Advisory Committee assists and provides advice to Council on the management, development and maintenance of the garden.

The establishment of the Advisory Committee is part of Latrobe City Council's commitment to involving and empowering citizens in managing this internationally recognised community asset.

Successful applicants will be expected to fulfill a three year term and attend monthly meetings.

For further information and/or nomination form please contact Simon Clark, Recreation Development Officer, telephone 5128 5422 or nomination forms are available at the Latrobe City corporate headquarters in Commercial Road, Morwell.



Nominations close Friday
24 March 2006



Café le Mac's

Hazelwood Village

Churchill

Tele: 5122 3466

**Special for the Month
Cappacino & Cake
\$6.00**



Back Again - Go Club (Golden Oldies)

Thanks to the courtesy of the Churchill Football/Netball club, we have been back from Thursday 16 February, in the Gaskin Park Club Rooms.

Twenty eight members recently enjoyed an outing to the Roseary Tea Rooms between Trafalgar and Yarragon. Bep Zomer and Jean Selwyn are pictured above enjoying the scenery while waiting for afternoon tea. The outing was sponsored by the local Wild Dog Cloggers dance group.

The "GO CLUB" is open to anyone who would care to attend. The session is from 1:00pm- 3:30pm.

The aim of this group is for people to meet with others who may be looking to do something for a short time each week.

The program consists of Bingo, cards, craft, Rummykin, or just a chat. In addition, there are special feature afternoons with entertainers, trips to various places, generating great friendship as we get together.

Each session concludes with a cuppa.

If you would like to know about the group, please feel free to contact Betty Wyatt 51221691, or Joan Gardner 51691623.



2006 Priorities

By Margaret Guthrie, President

AT our February meeting, members of the CDCA Committee reviewed our priorities for the year ahead. Support for the proposed Churchill Community Hub, including community fund-raising efforts to equip the Hub, is at the top of our list.

Another high priority is the commencement of the Civic Gardens Project. Although this has been talked about for some time, progress has been made 'behind the scenes' and we should see construction begin this year. The project will see the provision of the long-awaited public toilet facility (on the old nursery site) as part of this development.

Funding has recently been obtained for the provision of an ANZAC memorial, and consultation is occurring with the Morwell RSL as to what form of monument or cairn should be erected. This will also form part of Churchill's new Civic Gardens. Those interested in seeing sketches or being involved in the garden design are invited to call into 13 West Place during business hours.

At our February meeting we welcomed Alan Scarlett, from the Office of the Pro-Vice Chancellor at Monash University, Gippsland Campus, as Monash's new representative on the CDCA Committee. Latrobe City also has a representative attend our meetings (either Steve Tong or Heather Farley), so our meetings provide a great opportunity to exchange information, work together on community issues and communicate directly with the major stakeholders in

Churchill.

Also on our priority listing for 2006 is the continuing display of the Churchill 40th Anniversary Project at various venues around the district. They are currently on display at Monash, outside the library, for the commencement of the university student year.

We will also be working with schools and other interested community groups later in the year to provide Christmas decorations for display in Churchill and to plan our Community Christmas Market for December.

Those who attended last year's Market were entertained by wonderful musical performances by students from Churchill Primary School. Students from Churchill North Primary made beautiful and reusable Christmas decorations over the last 2 years, which are hung in the foyer of Foodworks Supermarket in December, whilst Churchill Primary students have decorated the Glendonald shop windows.

Other schools, pre-schools and community groups are most welcome to contact us about funding and participation in our community Christmas activities this year.

Contact our Secretary, Rob Whelan, on 5122 3602 for further information, or write to PO Box 191, Churchill 3842.

CDCA meets regularly on the first Tuesday of the month at 7.30pm in the Link Room at Monash University. All residents are welcome to attend, share a cuppa and join in our discussions.

Introducing The 'Cello

Prepared by Julia Buras

THE 'cello's full name is the violoncello. It is the second largest stringed instrument in the orchestra, and therefore has the second lowest sound.

The 'cello has four stings, like the violin. The strings are tuned in fifths; ie. Each string is five notes away from the next string.

The range of the 'cello is from the C below and stave in the bass, up to the A above the stave in the treble. Both bass and treble clefs are used to write the 'cello's range.

The cello is the only instrument that

uses all four clefs: treble, alto, tenor and bass clefs.

Music to look out for the "Trout" Quintet by Franz Schubert

This is a piece for cello, violin, viola, double bass and piano. In an ensemble such as this, every instrument gets a chance to play a solo.

A work that has a solo passage for a group of 'cellos is the first movement of the 'Unfinished' Symphony No 8 in B Minor D 759 by Franz Schubert. This work includes the rest of the orchestra as well.

The 'cello usually has beautiful, song-like solo passages, or it provides a bass line in a work.

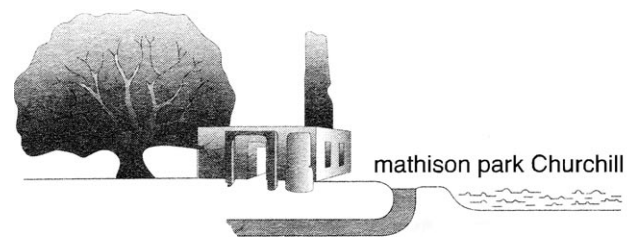
Playing the Cello in an orchestra gives me a great sense of satisfaction and achievement. I have learnt much, playing music with others and being part of a group is a rewarding and fun experience. I thoroughly enjoy playing a stringed instrument but the deep tones are what I love most about the cello.

I play the cello.

I enjoy playing the cello because it has a lovely low and mellow sound. I like playing in the orchestra because it sounds really LOUD and we have a lot of fun especially when we play the wrong notes or the right notes at the wrong time.

ANON

Help Needed for Pathways



THE plans for the extension to the pathways, are coming along well. We have put in a submission for funding, but we will still need the public to help.

Our working bees have now been changed to the third Saturday of the month. We are hoping that that is a better Saturday for lots of people! The next working bee will be on Saturday 18th March.

Our last working bee was in the area in where some new fitness stations, courtesy of the Commonwealth Games, are to be installed.

Also with much hard work, weeds were removed from around the fern garden at the bridge. With further mulching, this area will become a delightful spot.

Eastern Rosellas

Among the trees in the plantation along Tramway Road, there are many Eastern Rosellas. As you walk through that area, they fly from where you are to a position ahead, and then repeat the procedure, until you reach the top end. Then they fly back.

It like they are escorting you through their territory!

Eastern Rosellas have a red head, throat, and upper breast. There are white cheek pouches. The lower breast is yellow, merging into bright pale green on the abdomen. They are red under the tail.

Their backs are black, broadly margined with yellowish-green. There is a rich blue-purple colour on the wings. They give a vivid splash of colour when they fly.

Eastern Rosellas live in grasslands, open forest, trees bordering watercourses, or surrounding croplands, tim-

bered farmlands, orchards and parks or gardens. Mathison Park is an ideal habitat for these birds.

Their food consists of seeds of grasses, shrubs and trees, especially eucalypts and acacias, as well as fruits, berries, nuts and buds, vegetable matter, blossoms, nectar and insects and their larvae. They can do considerable damage to orchards.

Following a courtship display, pairs mate and nest in a hollow limb or hole in a tree, generally a eucalypt, a stump, fence post or log lying on the ground. Nests have been found in rabbit burrows!

The breeding season last from August to February and sometimes later. A clutch of 4-9 eggs is laid on a bed of decayed wood dust at the bottom of a hollow. The eggs are broad-elliptical, with a slightly glossy surface. Incubation last nineteen days and only the female sits on the nest.

Two or three times a day she briefly leaves the nest to feed, sometimes with food supplied by the male. Newly hatched chicks are fed by the female, who has been fed by the male.

From ten days old, the chicks are fed by both parents. Thirty-five days after hatching the young leave the nest, remaining with their parents many months.

Young birds attain adult plumage at the commencement of their second year.

This information and photo are taken from "Australian Parrots" by Joseph M. Forshaw, Illustrated by William T. Cooper.





Active Outdoor Activity!



By David Guthrie, President

The year has begun with lots of activities conducted by volunteers from the Glendonald Residents Group.

Last Sunday we collected litter from Glendonald Park as our contribution to Clean Up Australia Day. Not a lot of rubbish was to be found in the Park, so volunteers spent some time doing some maintenance work on the BMX track too. A BBQ lunch was provided for the workers.

Our Monday After School activities in Glendonald Park have been running during Term 1, with approx 30 children attending each week. A range of activities and team games are offered, with a delicious afternoon tea of fruit and vegetables provided. This program will continue throughout the school year.

We hope to organise a school holiday activity for local children in March. This will be held in Glendonald Park, with refreshments provided. Flyers will be distributed locally prior to the date. Our holiday activities held in January were lots of fun, with plenty of children and parents in attendance.

We also plan to again conduct our annual Easter Egg Hunt in April on Easter Sunday. We aim to provide a range of no-cost fun activities for children during the year, and appreciate the hard work of our dedicated volunteers and parent helpers.

Our volunteers were also involved in the recent launch of the Churchill 'Push-a-pram' walk, organised by Latrobe Community Health Services, on Monday 27 February. This group meets at 9.30am on Monday mornings at the Glendonald Child and Maternal Health Centre in Churinga Drive, and finishes at the BBQ shelter in Glendonald Park. Everyone is welcome to join in the walk, whether or not you have a pram to push!

We will be offering free training in the near future, conducted by the Australian Sports Commission, to residents who are, or are interested in, working with children in sporting and recreational activities. This training forms the basis of Children's Sports Coaching qualifications, Level 1, and is a great opportunity for volunteers and parents to learn more about conducting children's activities on a professional basis.

If you would like to know more about our Group and its activities, we can be contacted at PO Box 245, Churchill or by phoning the Secretary, Barbara James, on 5122 1407.

GRG Inc meets on the last Tuesday of the month at 7pm (6.30 in winter) in the Glendonald Kindergarten in Churinga Drive. Childcare and supper is provided. All residents of Glendonald are welcome to attend and have a say. The next meeting will be held on Tuesday 28 March.

Castle Garden and Plant Sales

Come browse through the garden

Refreshments available \$3.00

Nursery Sales 7 days - Little Gem Magnolia \$15

Wishing Wells made to order

Homemade bread: \$1.50

Wholemeal, Multi Grain, White

Organic tomatoes \$2.50kg

Rhubarb a bunch \$1.20

Homemade Sundried Tomatoes

\$1 - \$3 per jar

3 Roberts Road

Haverbrack Estate

CHURCHILL

Ph: 5122 3698

or 0407 561 192

Oxfam Australia

By ANN RUSHTON, Publicity Officer

THE Morwell branch of Oxfam Australia would like to thank the people of Latrobe Valley who generously supported our fundraising efforts and gave individual donations in 2005.

\$700 was sent to the Pakistan earthquake appeal, which provided tents, shelters and blankets.

Donations helped to provide vital emergency supplies for the people affected by the earthquake which struck South East Asia on October 8, leaving a wake of destruction with 53,000 people losing their lives and millions left homeless.

\$1000 was donated to the Niger famine, which was the result of massive crop failure. The money will build up scarce grazing lands for livestock.

\$1000 was also sent to Oxfam Australia Mining Ombudsman to help impoverished nations to have a voice against exploitation from Australian mining operations.

Your contributions will make a substantial difference to assist communities to raise their cases with the companies concerned in Australia.

During 2004-2005 Oxfam Australia supported long term development, advocacy, and emergency programs in 29 countries around the world.

In future articles I will endeavour to provide readers with informative insight with

regard to the ongoing work being carried out by Oxfam Australia.

This year the Morwell Oxfam Australia group is spending more time on self education issues regarding the work of Oxfam with guest speakers attending meetings. As a result there will be fewer fundraising activities.

The Morwell Oxfam Australia branch meets on the first Wednesday of each month. New members are most welcome. For more information telephone Wendy on 51221240, Roborn 51696494 or email wendybr@gmail.com

Health and Wellbeing

RU486 - The Abortion Pill

This article has been sourced by Hazelwood Health to provide up-to-date information on topical subjects. RU486 has been the subject of much media coverage of recent weeks. What it is and how it works is explained here.

Abortion pill - RU486 (mifepristone)

Mifepristone, also known as RU486 or 'the abortion pill', is a drug that induces miscarriage if taken in the first trimester of pregnancy. It can also be used as emergency contraception following unprotected sex. RU486 offers a safe, reliable and non-surgical means of abortion.

RU486 is not currently available in Australia for the purposes of inducing abortion. It is available in about 33 countries, mainly in Europe.

Most abortions in Australia are performed using suction aspiration. The woman's cervix is dilated (stretched open) and a tube is inserted into the uterus to vacuum out the foetus and placenta. Afterwards the uterus is scraped with a special instrument (curette) to make sure that no products of conception remain. This is known as a 'surgical abortion'.

RU486 explained

RU486 can be used to induce abortion in pregnancies that are about nine weeks gestation or less. A successful pregnancy needs high levels of the hormone progesterone. RU486 works by blocking the action of progesterone.

In some cases, RU486 can be taken by itself. The woman can go home from the doctor's surgery or clinic about one hour after swallowing the pill. It is important that she have a telephone at home so that she can contact the doctor or medical staff if needed.

In most cases, RU486 is supplemented with another drug, prostaglandin (to soften the cervix and help the uterus contract). About two days after the RU486 tablet is swallowed, the woman

returns to the clinic and the doctor administers prostaglandin. This may be taken orally or suppositories may be inserted into the vagina.

What to expect

The doctor gives the woman a pregnancy test and a physical examination. A review of her medical history helps the doctor to decide if the woman is a suitable candidate for RU486. Counselling is offered. The woman signs a consent form. The woman is given the RU486 pill in the doctor's office or clinic and must wait at least one hour before going home. The woman will typically experience:

Feelings of queasiness or faintness for a short time

Vaginal bleeding after about 12 hours

Bleeding and cramping similar to a bad period - women who usually experience painful periods are more likely to have severe cramping

Headache, dizziness, nausea, diarrhoea and chills (these may be experienced by some women who require the additional treatment with prostaglandin).

Taking care of yourself at home

Pads rather than tampons should be used. Over-the-counter paracetamol should be enough to manage the cramps - if not, the doctor may prescribe pain-killing drugs.

It is important not to smoke, drink alcohol or use herbal supplements or illegal drugs for at least 48 hours after the procedure. Women should avoid sex for about two weeks to reduce the risk of infection. Follow-up appointments with the doctor or clinic should be kept. The doctor may give the woman blood tests or other tests (such as ultrasound) to make sure that all products of conception have been passed.

Some women should not take RU486

RU486 isn't recommended for all women seeking abortion. The procedure may be unsuit-

able for:

Smokers aged 35 years or older

Women with certain medical conditions such as heart disease, asthma, diabetes, bleeding problems or hypertension

Patients taking long-term steroid medications or blood-thinning medications

Ectopic pregnancy

Pregnancies more than about nine weeks gestation

Women who have experienced prior allergic reactions to drugs containing mifepristone

Women fitted with an intra-uterine device (the IUD must be surgically removed before taking RU486).

Advantages of RU486

The World Health Organization (WHO) believes that RU486 is an important treatment that should be made available to women in developing countries. Some of the advantages of RU486 include:

About 95 women out of every 100 who take RU486 in the first nine weeks of pregnancy achieve a complete abortion.

Unlike a surgical abortion, a sterile operating environment is not necessary. The risk of infection is very small.

The risk of maternal death is extremely low.

RU486 is a cheaper, less invasive option than surgical abortion.

Anaesthesia is not needed.

RU486 does not require the services of a skilled surgeon, unlike surgical abortion. This makes it an attractive alternative for women living in remote areas.

Most women don't need pain-killing drugs.

Women who have used RU486 say that it is less stressful, clinical and emotionally charged than surgical abortion.

Most women who use RU486 successfully

abort without complications. No further medical or surgical treatment is needed.

Disadvantages of RU486

Disadvantages include:

Bleeding may go on for weeks in some cases.

The woman should seek advice from her doctor if the vaginal bleeding does not stop within a few days of the procedure.

In about one woman in every 300, the bleeding is heavy enough to require medical intervention. A surgical abortion and sometimes a blood transfusion may need to be performed.

Rarely, a woman may develop an infection. This can be treated with antibiotics. In a few cases, infection has been fatal. It should be remembered, however, that there is a small risk of death in any pregnancy.

The pill does not work for about five women out of every 100 who take RU486. A surgical abortion is needed.

RU486 can take days to work. A surgical abortion only takes about 15 minutes.

If the administration of RU486 doesn't work, and the woman changes her mind and decides to go ahead with the pregnancy, the baby is at increased risk of birth defects.

Where to get help

Your doctor

Family Planning Centre Tel. (03) 9347 7036

Women's health centre

Things to remember

RU486 is an oral pill that induces medical abortion by blocking the action of the pregnancy hormone progesterone.

RU486 offers a safe, reliable and non-surgical means of abortion but is not currently available in Australia for the purposes of abortion.

RU486 isn't recommended for all women seeking abortion.

Holes In One!

Churchill Monash Golf Club has had three holes in one between 17 January and 19 February. Jan Blizzard aced the fifth on the 17 January, followed by Eva D'Alterio acing the same hole on the 7 February. Eva then backed it up with another on the 3rd hold on the 19 February. Congratulations girls - they say things come in threes!

Results

Saturday Men's Comp: Stroke Medal 28.1.06 CCR67

Scratch: K Hills (8) 74. A Grade: T Peters (15) 63. B Grade: C Waterman (21) 65. C Grade: F Peel (27) 67. DTL: K Hills 66, D Jenkins 67, H Hutchinson 67, L Stein 68, F Debono 68, S McNamara 69 C/B. NTP: 3rd D

Jenkins, 5th G Fraser, 12th S McNamara, 14th H Smith. Birdies: S McNamara 12th, J White, L Stein, M Smith 3rd. Putts: K Hills 25.

Sunday Men's Comp: Par 29.1.06 CCR68

Winner G Blizzard (25) -

Sunday Ladies Comp: Par 29.1.06 CCR70

Winner: H Croft (36) +5. DTL: K Moroney (27) +3. NTP: 5th V Verheyen.

Tuesday Ladies Comp: Ambrose X3 31.1.06

Winners: V Rowley, A Hibbert, D Scurlock 61 7/6. DTL: E D'Alterio, C Gardam, T O'Brian 67 1/3. NTP: 0-32 3/12 C Gardam, 33-45 3/12 L Ollquist. Longest Drive 33-45 T O'Brien, 0-32 J Blizzard.

Saturday Men's Comp 3 X Ambrose 4.2.06 CCR68

Winners: S McNamara (18), C Barnes (31), C Waterman (20) 66-11 4/6 = 54 2/6. DTL: D Jenkins, D Williams, K Kerslake, 67-11 5/6 = 55 1/6. B Murphy, W Peter, P Ludlow 67-9 5/6 = 57 1/6. NTP: 3rd S Wotton, 5th P Shields, 12th F Peel, 14th J Jeffery.

Tuesday Ladies Comp: Monthly Medal 7.2.06 CCR70

Scratch: E D'Alterio (22) 92. A Grade: (0-32) S Jeffery (29) 70 C/B. B Grade: (33-45) V Anderson (33) 65. DTL: T O'Brien 66, E D'Alterio 70, D Thomas 73 C/B, M McDonald 73 C/B. NTP: 5th E D'Alterio 'Hole in One'. 14th L Ollquist. Putts: J Leslie 27. Lost Handicap: V Anderson 33-30, T O'Brien 42-39. Longest Drive 0-32 K Raber, 33-45 T O'Brien.

Saturday Men's Comp: Multiplication Stableford 11.2.06

Winners:

R Hodgson (29), J Trembath (25) 88pts. Runners Up: K Hills (8), C Speekenbrink (13) 86pts. DTL: W Peter - A Casey 83, G Fraser - R Sheahey 80, T Peter - F Keigran 77, J Ambrosini - D Taylor 70, K Garlick - G Britton 70. NTP: 3rd R Sheahey, 12th J Armstrong, 5th G Graham, 14th G Fraser. Birdies: R Hodgson - G Down 3rd.

Continued on page 19.



The Eta Carinae Nebula

By JEFF SING

TONIGHT, around 10 p.m. summer time (providing the skies are clear) Saturn can be found about 32° (about 1 1/2 hand-widths held up vertically at arms length) above the north point on the horizon. Shining at apparent magnitude 0.0 Saturn still outshines the brightest nearby stars. It will set around 3.30 a.m. tomorrow morning.

The apparent magnitude of celestial objects such as planets and stars was discussed in last month's issue. Magnitude refers to how modern-day astronomers measure the brightness of objects in the sky as they are viewed from the Earth using a well defined scientific scale developed by the English astronomer, Norman Pogson, in 1856.

Mars can be found low in the north-western sky in the early part of the evening before setting around 11 p.m. It shines as magnitude 1.0 [exactly one magnitude (2.512 times) fainter than Saturn]. The size of the Martian disk has shrunk to a tiny 6 arc-seconds, now not suited for detailed observations with a telescope.

Rising in the East around 10.30 p.m. is Jupiter, the largest planet in the solar system.

Jupiter's presence will be very pronounced over the coming five or six months where it will remain very bright and with a high altitude in the northern sky. It is not until late October when Jupiter will get too close to the Sun for observation.

Jupiter is now magnitude -2.3 and will reach a maximum magnitude of -2.5 next month when it will be the brightest object in the night sky apart from Venus (that can be found in the eastern sky before sunrise) and the Moon.

Reappearing above south-eastern horizon soon after nightfall is an old friend: the Southern Cross (Crux Australis) after spending last October and November very close to the southern horizon. About 25° (1 1/4 hand-widths) high above the Southern Cross is the less prominent, but unmistakable False Cross.

The False Cross is often mistaken for the Southern Cross.

However, there are several distinguishing differences. The False Cross is not accompanied by bright pointers - unlike the Southern Cross. The nearest bright star to the False Cross is Canopus, about 25° away, higher up and in a clockwise direction towards the west. Canopus at magnitude -0.7 is the second brightest star in the entire heavens.

The four stars that form the False Cross are fainter, and do not contain any first magnitude stars - unlike the first magnitude stars of Alpha (Acrux) and Beta Crucis (Mimosa) in the Southern Cross. The (major and minor) axes of the four second magnitude stars that make up the False Cross (10° and 7° in size respectively) are about 40% larger than the Southern Cross (that

measures 6° long and 4° wide).

Lying about mid-way between the Southern Cross and False Cross (12° or about a fist-width from the Southern Cross) is a hazy, misty patch of light about 2° (four Moon diameters) across called the Eta Carinae Nebula (or NGC 3372: from the 'New General Catalogue of Star Clusters and Nebulae' compiled by the Danish astronomer, J.L.E. Dreyer in 1888).

The 'integrated' apparent magnitude (i.e. the total light of a deep sky object condensed to a theoretical star-like point) of the Eta Carinae Nebula is 2.5, which is easily visible to the naked eye on a reasonably good night, but perhaps a little dimmed tonight because of the light from a 9-day old gibbous (slightly more than half-lit) Moon to the north.

However, moonless nights are the best times to observe the nebula.

Hundreds, perhaps even thousands of 'new' stars are being formed in the Eta Carinae Nebula which serves much like a huge 'star-making factory'. It is one of the largest emission nebulae in the entire Milky Way Galaxy.

An emission nebula is a huge, very hot cloud of tenuous hydrogen gas in interstellar space.

The Eta Carinae Nebula stretches over 300 light years across - about 20 times larger than the Great Nebula in Orion (M42). Tonight, the constellation of Orion (which contains M42: the middle star in its 'sword') is situated high in the north-western part of the sky. The true immensity of the Eta Carinae Nebula becomes apparent when we learn that it lies about 7,500 light years away from us and yet still manages to span 2° of the sky (the Great Nebula in Orion at 1,000 light years covers about 1°).

Through binoculars, or better still, a telescope, the true nature of the nebula becomes more apparent. There are several irregular dark lanes (dark nebulae) crossing the nebula that provide a stark contrast to the regions of bright glowing gas and rich star fields. The dark lanes are large clouds of dust grains that block the view of the bright gas clouds behind them: thereby creating a silhouette effect.

Dark nebulae are believed to be dusty regions of giant molecular clouds of interstellar gas.

Amongst one of the richest and most superb portions of the Milky Way are five magnificent, bright open star clusters - all of which are within a radius of 7° from the Eta Carinae complex.

Only a telescope using low to moderate power can afford the remarkable views the individual clusters have to offer, which consist of many dozens of sparkling bright stars.

Open star clusters are groups of several stars, up to hundreds of hot, young stars bound together by mutual gravity. There are over 1,200 open star clusters visible in the Milky Way. Most are resolvable only in large instruments. Many more hundreds may be hidden by intervening dust

clouds that pervade the Galaxy.

The brightest star in the nebula is the bright orange-yellow Eta Carinae itself. Eta Carinae, now shining at naked eye visibility at around magnitude 4.8 has shown unpredictable but contrasting variability - with erratic fluctuations between magnitudes 8.0 (below naked eye visibility) and almost -1.0 (very bright to the eye) over the last five hundred years.

In 1843 and again in 1845, Eta Carinae flared up to a peak magnitude of around -0.8, second in brightness only to the brightest star in the night sky, Sirius at magnitude -1.5. It was called the "Great Eruption".

When you consider that Sirius is approximately 900 times closer, then Eta Carinae must have been exceedingly bright in terms of its true luminosity back then.

The star is so unstable and unpredictable that it may explode catastrophically as a supernova within the next 100,000 years - or even tomorrow - and could brighten by a factor of a million times or more and illuminate the whole nebula to a dazzling brilliance. The star and associated nebula would then perhaps be the brightest object in the night sky: but its enormous distance from us means that it is unlikely to threaten life here on Earth.

During the "Great Eruption" period from 1838 to 1856 the star ejected huge amounts of gas and dust - equivalent to a dozen stars, about the mass of the Sun - yet somehow managed to survive. This blue-supergiant star is one of the ten most massive stars in the entire Milky Way Galaxy - if not the most massive - with 100 Suns worth of material.

It pumps out 5 million times more energy than the Sun, meaning that it emits more energy in 6 seconds than our star generates in a year. The star is obscured by gas that surrounds it: called the Homunculus Nebula.

Astronomers had long suspected that the star had a companion lurking in Eta Carinae's midst. In 1997, Augusto Damineli (University of Sao Paulo in Brazil) first drew attention to the fact that Eta Carinae's optical spectrum undergoes changes every 5.5 years; perhaps indicating that this was due to an extremely close orbiting star swinging behind the primary star in an elliptical orbit.

The companion star is thought to be an O-type blue supergiant with a mass of 30 Suns and a temperature of about 40,000° K (Kelvin), although no direct measurements have been made yet. The primary star, although much more massive than the companion, is thought to be



cooler at 30,000° K.

Subsequent X-ray observations supported an idea that the two stars collide violently when the two bodies approach each other every 5.536 years. This last occurred in June 2003 and the next brightening may occur in early 2009.

In 2005, a small group of American astronomers claimed to have reported the direct detection of ultra-violet light from the companion thereby adding to the controversy surrounding the theory.

Images taken by the Hubble telescope show two mysterious lobes of expanding gas surrounding the suspected binary star. This may support the theory of a collision between the two stars that would explain the amount of gas now present in the Homunculus nebula expanding at a prolific rate (at about 2.4 million kilometres per hour) due to powerful stellar winds.

Until further investigations are completed astronomers remain open-minded of the possibility it was the secondary star that threw off the mass that produced the 1840's Great Eruption.

The Eta Carinae Nebula will reach its highest point in the southern sky around midnight as it rotates clockwise in a westerly direction. During the next few months it will circle half-way around the south celestial pole (the latter located 38° above the south point on the horizon) until October and November when the nebula will be found just few degrees above an unobstructed southern horizon.

The Latrobe Valley Astronomical Society will hold its next monthly meeting at the Wirilda Environment Park conference centre, near Tyers on Tuesday, March 14 starting at 7.30 p.m. The evening will consist of an observing session if the skies are clear. A back-up program will be initiated if the weather proves unsuitable. For further details, contact Jeff Sing on 51747556.

Sports News

The Cougar Conversation



Pre-season is in full swing, with Dale working the boys pretty hard in anticipation of a big year. Numbers on the track are a little disappointing at this stage with a few blokes reluctant to get on the track to get rid of the summer "beer" belt.

With only 3 weeks before our first practice match it is imperative that we get everyone on the track and ready to start the season.

It is pleasing though to see good numbers at the thirds level with several boys returning to the club from stints away.

The Under 16's have also began pre-training and our coach Peter Mahr is keen to hear from any Under 16 boys looking for a game. After a reasonably successful first year in the TandDJFL, our boys are looking forward to big things this year.

Training is Tuesdays and Thursdays commencing at 4.30 pm.

Bye Bye Davo - Unfortunately during the month Aaron "Davo" Davidson had to

return home to USA earlier than expected owing to a sickness in his family. As a club we were unable to give Davo a send off we wanted too but we wish him and his family all the best. The two years he spent at Churchill were educational for both him and us and we will miss his pleasant manner and charm around the club.

Netball -

Try out's were completed on the weekend and our four sides are set for the year, we wish Rachael and her chargers the best for the season. I am sure we will again experience plenty of success on the netball court.

Membership -

There will be three levels of membership offered again this year and the prices have been set as follows -

Cougar Gold \$120.00
Cougar General \$ 40.00
Cougar Social \$ 25.00

If you are interested in becoming a member please contact the club on 51223033 or complete the form below and send it to P.O Box 111, Churchill, Vic, 3844

Upcoming Dates and Events

8th April - Round 1
Churchill v Rosedale at Gaskin Park
After the game "Season Opener" - Live Band

Oxfam Trialwalker

After a very successful Trivia fundraising night which was attended by 180 plus people, our 3 teams entered in the Oxfam Trailwalker. They begin their 100km endurance event on 7th April. We wish them much success and we hope those old football and netball bodies can hold together for the entire event. Good Luck !!!

Bingo and Meals

Don't forget Cougar Bingo every Wednesday night (eyes down 7.30) and Cougar Meals every Friday night (6.30pm). All welcome !!!

Situations Vacant

CFNC has several vacancies at present and we would be interested to hear from any person who may like to get involved with our great club -

Cook - we are looking for a person who would like to assist with our meals on Friday nights and other catering functions.

Trainers - we are seeking people who would like to get involved with the on-field action in the role of a trainer. The club is happy to train anyone interested in this role.

Match Day helpers - each week we need scoreboard attendants, goal umpires, interchange stewards and more. If you think this is something for you please contact the club on 51223033.

Churchill Baseball Club

By JOANNE GIBSON
Publicity Officer

In December 2005 and since January 2006 Vanessa Gillett and Amy-Leigh Gibson from the Churchill Baseball Club have been travelling to Melbourne for training in the hopes of gaining selection for the under 15 state girl's squad. The town should be proud of their selection as on the weekend of 1 and 2 April 2006 they will be competing in New South Wales. They are now a step closer in following another Churchill girl's footsteps.

Ailsa Davidson was originally a Churchill player until her family had to move to Melbourne. She now plays for Doncaster 1's in the Women's League and has again been selected for the Australian women's team as well as the Victorian state squad. This is what these two girls are aspiring to achieve for themselves. The girls would like to take this opportunity to thank all those that have so far bought chocolates to help raise the money to cover their costs. If there is anyone else out there that would like to help the girls please don't hesitate to call Simone Gillett (51223557) or Joanne Gibson (51338303

or 0424781039). If there are any girls out there that are thinking of joining baseball don't hesitate to call one of us because hopefully in October this year the girls will be going up for selection again to gain a spot in the Aussie Hearts under 15 team that travels to Canada, Queensland and America. To do this you need to be registered with a local club so come on and join the fun.

On another note just to let all the boys out there know that junior training commenced on Wednesday 1 March and senior Thursday 2 March. Due to it being daylight savings it will be 5pm to 6pm for the juniors and 5pm until dark for seniors. All those juniors that were in the under 16 age group last season have been asked to train on the Thursday with the seniors please. For any further enquiries, please contact Ross Cooen (51343365) or Joanne Gibson on the above numbers. Past players and new members warmly welcomed. The Churchill baseball club will be hosting the Gippsland championships at the west end complex in Traralgon on the 1 and 2 of April (behind the Catholic College Lavalla, Grey Street) this is the time for all those interested but not sure, to jump in give it a go then join up.

Golf Results cont:

Sunday Men's Comp: Open Mixed 12.2.06
A Grade: J White (16), K Raber (29) 66 1/8. B Grade: Adrian (20) Linda Casey (38) 74 1/4. Visitors: S & Y Yoshimura 70 3/8. DTL: J Ambrosini / K Mornoe 69 3/4, B Peter / J Bush 70 7/8. B Dykstra / D Wood 73 5/8, L & J Maher 75 1/8. NTP: 3rd V Monument, 12th J White, 14th K Morney, 5th B Smith.
Tuesday Ladies Comp: Stableford Multiplication 14.2.06
M McDonald (32), B Beebe (36) 88. DTL: H Croft - V Anderson 87.
B Beebe - M Mconville 83. NTP: 3/12 (0-32) M McConville, (33-45)

B Beebe. 5/14 (0-32) Di Scurlock, (33-45) B Beebe.

Saturday Men's Comp: Par 18.2.06 CCR67

A Grade: L Stein (13) +7. B Grade: G Britton (24) +8. C Grade: F Debono (29) +6. DTL: G Fraser +6, K Garlick +5, W Peter +5, M Smith +5, A Casey +4, J Armstrong +4. NTP: 3rd I Wilden, 5th N Peter, F Sedjak, 14th P Ludlow. Birdies: 3rd I Wilden, 5th P Ludlow, 12th E Winter, M Smith, 14th P Ludlow.

Sunday Men's Comp: Stableford 19.2.06 CCR68

L Maher (18) 40pts. DTL: G Blizzard 40pts, NTP: 3rd J

Ambrosini.

Sunday Ladies Comp: Stableford 19.2.06 CCR70

E D'Alterio (22) 46pts. (Lost Handicap 22-19). DTL: P Hrynyszyn 37pts. NTP: 3rd E D'Alterio, 5th M McConville. Hole in One: E Dalterio

Tuesday Ladies Comp: Stableford 21.2.06 CCR70

J Blizzard (25) 44pts. DTL: J Hayse 42pts, B Beebe 41. NTP: 3/12 0-32 S Jeffrey, 33-45 P Hrynyszyn, 5/14 0-32 M McDonald, 33-45 J Hayes. Lost Handicap: J Blizzard 25- 22, J Hayes 45-41, B Beebe 36-34.

BOB ASHDOWN APPLIANCE REPAIRS

*Washing Machines
*Dishwashers
*Stoves
*Driers

Service Agent:

●Fisher & Paykel ●Simpson
●Hoover ●Chef ●Westinghouse
●Vulcan ●Cucina

Now Selling:

Whitegoods with Manufacturers Warranty

62 George Street, Morwell

Ph: (03) 5134 1875

STRUT RE-GAS

Tel: (03) 5166 1665 Mob: 0407 542 122

"The Strut Specialist"



- New Struts available including Stainless Steel
- Automotive applications: cars, 4wd, trucks, buses & tractors.
- Office/Medical Equipment: chairs, photocopiers etc.
- Boats, Trailers & Industrial uses.

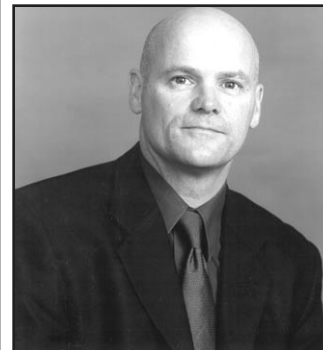
Struts are not throw away items.
They can be RE-GASED!

MOBILE STEWART'S SMALL ENGINE REPAIRS



ALL SMALL ENGINE
REPAIRS DONE,
WELDING & MOBILE
SERVICE AVAILABLE.

STEVE & MANDY STEWART
24 DUNBAR GROVE
CHURCHILL VIC 3842
PHONE: 0427 345456
ABN: 69 186 628 255



Phone: 5133 9088
Fax: 5133 9388

Need advice, information
on
State Government matters?

For friendly advice and assistance please
contact

Brendan Jenkins MP
State Member
for Morwell District

Churchill Indoor Netball Association Junior Competition

New competition starts April 1
New players wanted!

Girls and Boys Welcome

Come alone and make new friends or bring some
friends and join in together.

Play indoors, no rain, no asphalt
Age groups range from 7 to 17 years.

Churchill Indoor Netball Association Junior
Competition offers a friendly, welcoming environment
for children of all ages to play netball.

For further information contact:
Sharon Middlemiss, phone 51222768 by 12/3/2006
Or Fiona Rickwood, phone 51222 493



GUY & DEBBIE D'ALIA (OWNER OPERATORS)
 543 Princes Drive, Morwell
 Same Service Road as the Italian Australian Club (Next to Boltco)
 PH: 5133 7000 FAX: 5133 8458
 MOBILE: 0412 949 091 A/H: 5122 1377

TRADING HOURS
 Monday - Friday
 7.30am - 5.00pm
 Saturday
 7.30am - 12.00pm

OUR HIGHLY TRAINED STAFF HAVE 65 YEARS COMBINED SHOPFITTING/GLAZING EXPERIENCE



Guy & Debbie

QUOTE OF THE MONTH

I have not failed. I've just found 10,000 ways that won't work!
 Thomas A Edison

FUNNY FACT!

'Almost' is the longest word in the English language with all the letters in alphabetical order!

JOB OF THE MONTH



Crinigan Road Primary School's main entrance is a whole lot grander these day's. GUY'S GLASS replaced the old timber glass entry doors and the windows surrounding them, with aluminium framed shop front windows and doors. We replaced the old glass with laminated safety glass as well as replacing doors in the corridor. It has made a lot of difference to the building which now has a more modern feel to it.



- *Free Measure & Quotes
- *Highly Qualified Staff
- *Trading Since 1966
- *Quality Products

For that finishing touch seek...

sleek

A high quality range of bathroom accessories available at GUY'S GLASS & Commercial Shopfitters

Items Available

shower caddy...towel shelf and holder...corner glass shelf and brackets...soap holder...double hook...double towel holder...glass shelf & brackets...liquid soap dispenser...towel ring...toilet brush holder...600mm single towel holder...600mm towel shelf...toilet roll holder single hook...glass holder



Sleek is a complete range of quality bathroom accessories made from brass and finished in polished chrome, satin chrome or gold - sleek is the only choice.

FREE CALL: 1800 771 072

FOR MORE INFORMATION ON THIS PRODUCT

CUSTOMER COMMENTS!



WE WERE VERY PLEASED WITH THE WORK COMPLETED BY GUY'S GLASS. THE WORKMEN WERE CONSIDERATE OF OUR NEEDS AS A SCHOOL AT THE BEGINNING OF THE SCHOOL YEAR. THE WORKERS WERE HAPPY TO ACCOMODATE OUR SPECIAL REQUESTS AND WERE CONSCIOUS OF SAFETY REQUIREMENTS WITH CHILDREN. WE WOULD RECOMMEND GUY'S GLASS FOR ANY MAINTENANCE OR OTHER SIMILAR BUILDING NEEDS.

JUST GIVE US 1% OF YOUR BUSINESS AND WE WILL EARN THE REST!

Colour in Your Home

Different colours affect your emotional and physical states. All colours can significantly affect how you feel in a room

RED

A room that is painted red will energize, inspire activity and movement, help passion, be powerful and stimulating. A red room can also be exhausting and overpowering, and stressful for those who are anxious. Pink is less demanding. Choosing a red bedroom would not be restful, although some reds can be used to enhance sensuality. A red exercise room would be energising! In Feng Shui Red means luck!

DEB'S NATURAL CLEANING TIP

Using Essential Oils Around Your Home

ESSENTIAL OILS CLEAN THE AIR RATHER THAN MASK SMELLS IN THE HOME

Use a few drops of essential oil to water in a spray bottle to freshen linen or spray on garments before ironing.



PERSPEX * ALUMINIUM * WINDOWS & DOORS * HEATER * GLASS * MIRRORS

INSURANCE * WORK * SHOWER * SCREENS * GLASS * SPLASH / BACKS * GLASS