

CHURCHILL & DISTRICT NEWS

Est. 1966



Ruth Place with Norm Hall from Churchill Lions (left) and Deputy Mayor Darrell White

Churchill Citizen of the Year

THE inaugural Churchill Citizen of the Year, Ruth Place, accepted her award at the 2005 Australia Day Ceremony in West Place, Churchill, with a 'stomach full of butterflies!'

Ruth was nominated for her quiet achievements in the Churchill Community which are greatly appreciated by many people. She was the key figure in the re-launch of the Churchill and District News in 2002 and has worked tirelessly ever since to make it the great paper it is today. She is also involved in many other community groups including CFA Brigades in School, Walking School Bus, Breakfast Program, Mathison Park, Christian Religious Education and the Neighbourhood Centre Singing Group.

A retired teacher from Churchill Primary School, Ruth will jump in when a job needs doing but puts her success down to teamwork.

"Its teamwork that counts," Ruth says. "I have had so many great people to work with. That is what makes it so rewarding and enjoyable."

"This is a great place to live and we have many fantastic groups working for our town," Ruth continued. "We can do mighty things if we all work together and do the things needed."

The award was presented by Norm Hall from Churchill Lions who organised both the Australia Day Event and instigated the award.

"I would like to thank the Lions Club for the honor given me and for the tremendous work they do," said Ruth. "I would also like to thank Val, Wendy and Tracey for their nomination."

Congratulations Ruth from all of us at the Churchill and District News!

Churchill Festival Wins Australia Day Award

THE Churchill and News' Churchill Festival held in May 2004 was unique. It was a festival of information and entertainment that was free. The idea was to inform and allow everyone attending to do so without any financial pressure. All entertainment and refreshments were provided and extremely well received by the public. Many were completely surprised that 'everything' was free!

The support from many and varied organisations, 32 in all was tremendous. The (award winning) venue was Glendonald Park was a perfect setting. All the necessary facilities were there.

Months later people are still talking about the event and are waiting for the next. The idea of a free festival was welcomed by many parents who felt refreshed that they could

spend a day out with the family and not have to open their wallets or purses.

The Churchill and District News Churchill Festival was presented with an award for their achievement in staging the event at Kernot Hall on Australia Day.

"It was so lovely to be recognised for all our hard work," said Festival Organiser, Tracey Burr.

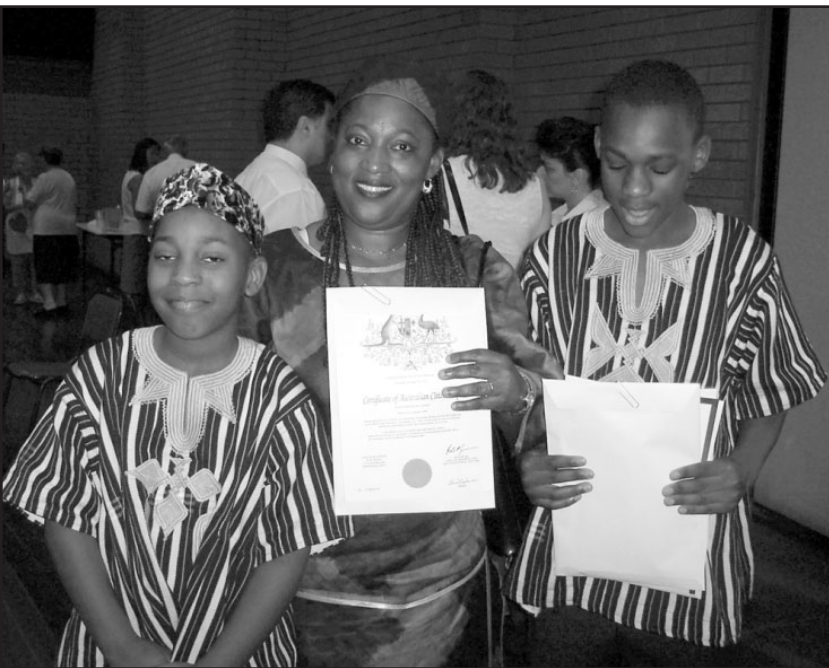


Mayor, Cr. Bruce Lougheed presents the award to Val Prokopiv from the News



The Churchill & District Lions cook up breakfast at West Place in Churchill on Australia Day

New Australian Citizens



Ms Agnes Kwansah-Aidoo, Fiifi Kwansah Aidoo and Paa Kwesi Kwansah from Churchill (pictured left) became Australian Citizens at a ceremony at Kernot hall on Australia Day.

They, along with 19 others, took their citizenship oath, after being escorted into the Hall by the Morwell Caledonian Pipe Band.

The Morwell Citizen Band, the City of Traralgon Band and the Latrobe City Youth Band all performed in front of a packed audience

Now Open CHURCHILL BBQ CHICKENS

Hazelwood Shopping Village
5122 3327

Homestyle

- * Roast Dinners
- * Hamburgers
- * Souvaki
- * Sandwiches
- * Salads
- * Catering

1/4 Chicken & Chips
Plus Can of Coke
\$5.80

Until 24 February 2005
10.30am - 8.30pm
7 days

LUCIO G VIGGIANO CPA

Accounting, Taxation, and Business Services
Upstairs, Suite 14,
Hazelwood Village Shopping Centre
Monash Way, Churchill 3842
Phone: (03) 51 222 300
Fax: (03) 51 222 773

Churchill & District News - Proudly Sponsored by:



International Power
Hazelwood

EDITORIAL

Welcome to our first edition for 2005.

We have now been producing the paper in this format for just over two years and it is time to find out what you, the reader, thinks.

We would be very grateful if you would fill out the readership survey on page 13. This will help us with our forward planning and also ensure that we are fulfilling community needs.

Congratulations go to Ruth Place for her Churchill Citizen of the Year Award which was well deserved.

Thanks and congratulations also to the Churchill & District Lions for the organisation of Churchill's Australia Day Ceremony - the breakfast was wonderful!

Next year, however, the Lions will

be looking for the Young Churchill Citizen of the year - if you know of any young people deserving of this award please keep them in mind.

Congratulations also to the Churchill Festival on their Australia Day Award.

The next festival will be held on 1st April 2006. Planning has already started.

If you or your organisation are interested in becoming involved in any way, either as a volunteer, exhibitor or sponsor, please email Tracey on festival@cdnews.com.au.

Our 2005 Art Competition is underway, details are on page 9. We welcome entries from all age groups, from 2 to 100!

Don't forget to let us know what you think!
ED.

Contributions

Articles for publication and letters to the Editor can be sent to:

Churchill & District News PO Box 234, Churchill, 3842

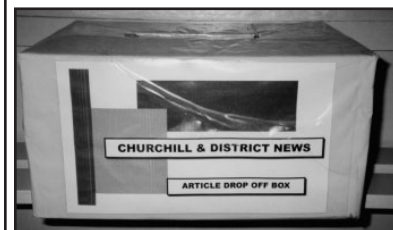
Or Email: editor@cdnews.com.au

All articles must be submitted by the 30th of each month for publication in the second week of the following month.

Advertising enquiries can be addressed to:

Peter Prokopiv Churchill & District News PO Box 234, Churchill, 3842

Tel: 03 5122 2589 or 0402 406 376



Look out for our Article Drop Off Boxes Located at:
Foodworks, Churchill Primary School, Churchill Library, Co-Operating Church and Monash Uni Reception.

Churchill & District News

THE CHURCHILL & DISTRICT NEWS IS PRODUCED UNDER THE DIRECTION AND CONTROL OF THE CO-OPERATING CHURCHES OF CHURCHILL. THE COOPERATION IS MADE UP OF THE ANGLICAN, UNITING AND CHURCHES OF CHRIST.

Disclaimer

The Churchill and District News wishes to advise that the views or remarks expressed in this publication are not necessarily the views of the Editor or Working Party and no endorsement of service is implied by the listing of advertisers, sponsors or contributors.



Dainbridge Services Pty Ltd

"We all must retire some day,
So let Dainbridge show you the way,
To plan your investment,
And live in contentment,
But you must start, and start right away."

Danbridge Services
Upstairs, Suite 14, Hazelwood Village Shopping Centre
Monash Way, Churchill 3842
Phone: (03) 51 222 033 Fax: (03) 51 222 773

Churchill & District News



Churchill & District News and Hazelwood Rotary Club
Present A

TRIVIA NIGHT

Where? Churchill Hotel
Time? 7.30pm
When? March 4
How Much? \$5 per person

Tables? Yes, you may have a table of 4, 6, or 8.

What do you need to bring? Nibbles.

Tea, and Coffee will be provided.

All Proceeds will go to the Rotary Centenary House Committee who is raising money for an accommodation facility adjacent to the Latrobe Regional Hospital

For Further details ring:
Tracey 5122 3507 or 0422823179
or email
festival@cdnews.com.au

The New Age Shop

13 WEST PLACE CHURCHILL

COME IN

AND CHECK OUT OUR NEW LAYOUT

*extensive range of massage oils
&*

hand crafted bags by ATHENA

Tuesday-Friday 9am- 5pm

Saturday 9am-noon

TELEPHONE 03 5122 3602

Our website:

www.cdnews.com.au

The Churchill & District News are proud to announce the launch of their website:
www.cdnews.com.au

The Churchill & District News is available in PDF form, from this site the day it is published. Details of competitions and events will be updated regularly.

Check it out and let us know what you think via the contact details on the website.

HT & E Theatre Co. Proudly Presents

A Devilish Theatrical Romp of Heavenly Proportions

HEAVENS ABOVE!

Synopsis: God and his eternal nemesis The Devil embark on a "game". with the winner taking control of the World -
Boy R We In Trouble!!!!!!

Six Shows Only!

10, 11, 12, 17, 18 & 19 March 2005 @ 8pm
"The Switchroom" - ARC Yinnar (Main St)

All tickets only \$7. Available from: Image Direct - Print, Desin & Copy Traralgon (18a Church St.), Community Cyber Hub Moe (38 George St.), Valley Trophy Centre Morwell (60 Geoge St.) & Shellbeez Hair Relm Yinnar (2 Langley St.)
Limited @ Door - Info & Phone books 0408 144 022

Don't Stand For Poverty

Oxfam/Community Aid Abroad's Latrobe Valley Walk Against Want

Sunday 6 March 2005

HELP break the cycle of poverty! For example, by raising: \$20 you can help five household gardens be set up in Cambodia to help improve diet; \$50 can buy tow hygiene kits for a family in a Chad refugee camp; \$300 can support a community worker in South Africa to provide HIV/AIDS education, home based care and counseling for one month; \$650 can purchase a cow for a family in Laos to use to cultivate their land.

For the year 2005, participants in the Latrobe Valley's Walk Against Want will enjoy walking along a small section of the Traralgon to Maffra Rail Trail.

Location

All walks start and finish at the Glengarry Hall, centrally located within Glengarry (at the intersection of Cairnbrook road and Black Tank Road).

Lunch

A light lunch will be provided.

The Walk

The main walk will be a return walk along the Rail Trail of just over 8kms. However, some people may

wish to go for a much shorter walk up and down the Rail Trail or even go for a stroll around the attractions of Glengarry Township.

It would be possible for mountain bike riders to ride along the route.

Start

Starting is anytime from 9.00am until about 11.30am.

Registration and Sponsorship

This year the issuing and collection of sponsor books is being coordinated by Oxfam Community Aid Abroad's head office. The easiest ways to request a sponsor book is to call 1800 034 034 or visit the internet at www.oxfam.org.au/walk.

For more information about the walk contact either Jim Stranger on 5191 8312 or David Langmore on 5174 5327.

The Morwell branch of Oxfam/CAA meets in Churchill on the first Wednesday of every month. Interested people are welcome to attend. Contact Roborn on 05169 6464 or Wendy on 5122 1240.

AUSTRALIA DAY – 26 JANUARY 2005

By JOHN BARKER, Publicity, Lions Club of Churchill & District

AUSTRALIA Day was held in Churchill for the 3rd year in succession. Organised by the Lions Club of Churchill & District and sponsored by Latrobe City it is a Community Gathering enjoyed by all.

Organiser Lion John Barker welcomed a much larger crowd this year of around 180 people and thanked them for their attendance.

Guide Kate and Scout Elizabeth performed a reading "About Australia Day". This was followed by an address from Latrobe City Deputy Mayor Daryl White.

The highlight of the event was undoubtedly the announcement that Ruth Place had been chosen as Lions Club of Churchill & District Citizen of the Year 2004.

Lion President Norm Hall was made the announcement and presented Ruth with a plaque.

In line with the Lions policy of supporting youth in the community, Churchill Guides Paige and Vanessa and Churchill Scout Elizabeth proudly formed a Color Party to raise the flag and joined in the singing of the National Anthem led by Leaders from Churchill Guides and Hazelwood Guide District.

Lion John Barker thanked everyone for their atten-



dance and invited all present to join together in a breakfast prepared and served by members of the Lions Club of Churchill & District.

Special thanks to Rob Whelan of local business Minster Constructions for the use of the facility and the Churchill Saloon Bar for making toilet facilities available.

Pictured above: Guide Kate and Scout Elizabeth reading 'About Australia Day' and left Darrell White and the Color Party Scout Elizabeth, Guides Paige and Vanessa.



Theft From Nativity

FOR many years the Catholic Parish of Lumen Christi has provided a Nativity Scene, a building (stable) and cut out figures depicting the Stable at the inn in Bethlehem, symbolizing the birth of Jesus at Christmas time.

It has been displayed under the star near the illuminated tree at Monash Way roundabout.

Over the years there has been very little vandalism and the scene has been reasonably respected. This year, however, disaster struck. Seven of the figures were stolen.

The figures are two thirds life size, strongly made of particle board and were well secured to the floor.

A lot of work time and considerable cost was involved in the making of this scene and we would really like the figures returned.

Anyone with any information please contact the



Churchill & District News on 5122 2589, Lumen Christi on 5122 2226 or the Churchill Police.

No questions will be asked – just please bring them back.

Our flair is your Hair

Churchill

Cutting Corner

Monday - Friday 9.00am - 5.30pm

Saturday 8.30am - 1.00pm

Shop 4 West Place

Churchill

Telephone: 5122 3233



Morrison Veterinary Services

Clinic: (03) 5122 1122

Open: Tuesdays & Thursdays - 9.00am - 5.00pm

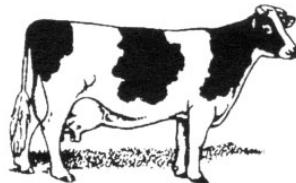
Monday, Wednesday & Friday - 1.00pm - 5.00pm

Saturday - 10.00am - 12.00pm

Other Times By Appointment

24 HOUR EMERGENCY SERVICE

0429 436 048



Dog Groomer Available By Appointment Only



Thinking CRUISING?

"SPECIALS OUT NOW!!"

Come and see Latrobe Valley Travel for award winning service, competitive prices and independent advice.



4 Tarwin Street Morwell Telephone: 5134 1433

Email enquiries@latrovetravel.com.au www.latrovetravel.com.au

CELEBRATING 30 YEARS IN TRAVEL

Dedication At Illangi - House On The Hill

By ZELMA MILDENHALL

GUIDES participated in the Churchill Flag Raising Ceremony and Community Breakfast at the West Place Shopping Centre.

Ruth Place was named as the Churchill Citizen of the Year and presented with a certificate.

Congratulations Ruth from your Guiding friends.

On Saturday 19 February Guides will celebrate World Guide Thinking Day at Burnet Park Campsite, Glengarry West.

As part of the celebrations the dedication of the Nance Burnet Garden will be held at 5.00pm.

The camp was established on land donated by Mr Allan and Mrs Nance Burnet in 1965.

The Second Traralgon Company was

the first unit to camp at Burnet Park in January 1966.

A building purchased from the LVWS was moved onto the site in April 1967 and named Illangi – house on the hill.

Nance continued her guiding interest and support until her death in June 2004.

Friends of Nance are invited to attend the dedication, renew friendships and view improvements to Illangi and the camp grounds.

For more information contact Zelma Mildenhall on 5166 1264.

The Baw Baw Region Wheelies Day for guides of all ages will be held on Saturday 19 March at the Hazelwood Power Children's Traffic School in Morwell from 1.00pm to 4.00pm.

Church Snippets

BY RUTH PLACE

CHRISTMAS was celebrated in many ways, by members of our congregation.

Along with other people from the other churches of Churchill, we participated in a well attended, though yet again, wet, Carols by Candlelight at Monash University.

Our Christmas Services were Crib Service at 6:30 p.m., then 11:00pm on Christmas Eve, followed by 9:00a.m. on Christmas Day.

Neil Leys celebrated his 80th birthday with family and the congregation.

Neil is another one of our eighty years young members.

A very solemn service of reflection and prayer was held at 9:30 a.m., on Sunday 16 January, the National day of Mourning for the Victims and Survivors of the Earthquakes and Tsunamis.

It was a time to reflect on those who had been lost, those surviving, and those involved with the dreadful work of rescue, identification, cleaning up and restoration.

A retiring offering for the relief and restoration work for the survivors, was received. This was forwarded to CARE Australia.

Our Garage Sale will take place on Saturday 26 Feb. from 9:00 a.m. - 1:00p.m., with an auction of leftover goods at 12:00 p.m.

There will be furniture, white goods, household items, plants and a sausage sizzle with tea and coffee. There will be items of special interest to Uni students setting up houses. If you know any students please let them know about this.

For collection of goods or further information, contact Trevor Ph. 5122 2442 and David Ph. 5122 1444.



Enjoying the Christmas Eve Crib Service



Neil Leys celebrated his 80th birthday with family and the congregation.

Reflections

By REV. DR. BOB BROWN

RECENTLY, a friend asked me if I was going home for my short vacation in January.

By that he meant was I going to visit my sisters and brother and their families in the environs of Sydney. "No, not this year" was my reply. "I'll be taking my break by the beach at Inverloch."

His question, however, caused me to reflect on what do we mean by 'home'.

Before my parents died, my siblings and I used to refer to our parents home as the 'family home'.

They had lived in that place for all their married life, fifty-six years, and we children each spent the first twenty years or so of our lives living in that home.

But ten years ago the property was sold; the new owners demolished the house and built their new home on the site.

While the memories of that sacred site, the 'family home', linger on I am also aware that since I moved out of that home I have lived in many different places including three theological colleges and nine clergy residences.

So I find it difficult to say where 'home' is for me. Yet how much more difficult it must be for Aboriginal Australians, who had their centuries old tribal lands taken from them, and for refugees, asylum seekers and other displaced persons to define their place called 'home'.

Homelessness is much on our minds these days, heightened by the plight of the numerous people living in places devastated by the earthquake and tsunami in Southern Asia last Boxing Day.

The outpouring of prayer, compassion, financial assistance and practical help on the ground by Australians is not only remarkable but a spirit of generosity we can be truly proud of as a nation.

Nevertheless, it should be a major concern for all of us that there are several thousand homeless kids living on the streets of Melbourne and Sydney and other places in Australia.

In 2001-2002 the Department of Human

Services Supported Accommodation Assistance Programme (SAAP) provided support for an estimated 11,000 young people under the age of 25 years in Victoria.

This was 38% of the 29,000 clients assessing the homelessness service system.

Now whilst there are different categories and a variety of reasons for homelessness, taken together, these statistics highlight the reality that homelessness is not only a national problem but a metaphor for how lots of people view their relationships to their families: they no longer feel they belong to a family.

The hurt experienced in not having a real 'home' underscores the deep need for such a place.

People who do not experience a nurturing home as children often search for that special place of acceptance and belonging for the whole of their lives.

The church through its local congregations and special agencies has been and continues to be such a place for homeless people.

Jesus, knowing the depths of homelessness and loneliness that his death would bring to his mother, assured her, in his dying words from the Cross, that in his absence she would experience a new family relationship – a new home.

Referring to his trusted disciple, he said to his mother: "Woman, here is your son." Then he told John, "Here is your mother" (John 19:25-27).

These words of Jesus present a demanding challenge for the church's pastoral ministry for in them he redefined the meaning of 'family'.

No longer is family to be based merely upon genetic links, surnames, or privileges of inheritance, but is now defined by our response to each other's needs.

Jesus stretches our understanding of family beyond blood relations to include those friends and strangers who are searching for a place called 'home'.

Church Times

Co-operating Churches of Churchill

Rev. Dr. Bob Brown
Williams Avenue, Churchill.
Tel: 5122 1480
Glenda and Ian Combridge
Tel: 5166 1819
Sunday Service: 9.30am.
Choruses: 9.20am

Lumen Christi Catholic Church

35 Walker Parade, Churchill
Tel: 5122 2226
Father Malcolm Hewitt
Saturday: Mass: 7.30pm
Sunday: Mass: 9.30am
1st, 3rd, and 5th Sundays: Yinnar:
Mass: 11.00 am
2nd and 4th Sundays: Boolarra:
Mass: 11.00am

Churchill Christian Fellowship

Maple Crescent, Churchill.
Pastor Tony or Hermanna Marsden
5122 2777
Sunday: 10.00am
Ladies Meeting: Tuesday 10.00am

Easter Service Times

CO-OPERATING CHURCHES OF CHURCHILL

Tuesday 22 March. 7.30pm Tenebrae with Lumen Christie at the Co-Operating Church.
Good Friday 9:30 am at Church followed by Way of the Cross witness walk with Lumen Christie, starting at Co-Op Church, at 10:00 am.
Easter Sunday. 9:30 am.

LUMEN CHRISTIE

Tuesday 22 March. Tenebrae at the Co-Operating Church at 7:30 pm.
Wednesday 23 March. Mass at 9.30am
Holy Thursday, 24 March. Mass of the Lords Supper 7.30pm
Good Friday. Solemn Commemoration of the Lord's

Passion at 3.00pm
Holy Saturday 26 March. Reconciliation 10.30-11.00am. Easter Vigil 7.30pm
Easter Sunday. Mass 9.30am. Churchill and Boolarra at 11.00am

BOOLARRA-YINNAR PARISH

Holy Thursday [Maundy] 7:30 pm. at Boolarra.
Good Friday. 10:00 am at Yinnar with Way of the Cross witness walk.

Easter Sunday. 7:30 am service in the park, Boolarra. 11:00am Boolarra.

CHURCHILL CHRISTIAN FELLOWSHIP.

Easter Sunday 10:00 am
FUSION/ AWAKENING PRAYER VIGIL
The Ridge Good Friday 6 pm-6am



Thinking of
Spring (Summer)
Cleaning?

The Co-Operating Churches in Churchill
**Garage Sale, Plant Sale
& Sausage Sizzle**

Saturday 26th February 2005
9.00am – 1.00pm
AUCTION AT 12 NOON

Wanted

Furniture, White goods,
Household items, Plants, etc.
Items especially suited to students

For collection please contact:

Trevor: Ph 5122 2442

David: Ph 5122 1444

Your support is greatly appreciated.



Annual Folk Festival - Boolarra

March 5

THE small township of Boolarra has become a hive of activity in readiness for their 3rd annual Folk Festival on March 5. The parks are looking beautiful, musicians are rehearsing in garages all over Gippsland and community groups are busy making preparations for the big day. Posters are being designed, programs put together, badges made and wine labels designed. All of these tasks are in the hands of design coordinator Chelsea Stewart.

The music will once again kick off in Centenary Park at 11am. The 17 acts have been selected, with Tasmanian Band "Anita George and Northbound" headlining this year. Other great bands include "Blue is Hope", "Swamp Dogs", "Strzelecki Stringbusters", "Wulaba", "The Gum Nuts Bush Band", "River Crombie", "Wendy Reed", "Jed Rowe", "Steve Messer", "Jack Daniel", "Danny Burton", "Dennis Kadmon", "The Boolarrians" and many more. All performers and their biographies are listed on our website. www.boolarra.gippsland.com

Back by popular demand is the Combined Schools Percussion Group trained by well-known musician Steve Schulz. Children from local schools such as Boolarra, Yinnar, Yinnar South, and Mirboo North will be playing South African, Latin and Brazilian percussion. This is worth seeing as they were absolutely inspirational at the 2003 and 2004 festivals.

The Art, Craft and Food Market will open at 10am in Railway Park. The quality of the stalls is exceptional, with many local artists displaying their unique talents.

The committee are working hard to ensure that the festival remains a free event. T-shirts, badges, programs and wine will be on sale at the Information Tent.

Buskers are an important part of a music festival, so the committee would like to invite any budding musicians or bush poets to come along and help enrich the festival with their talents.

The Kids Tent, which was a huge success at the pre-

vious festival, will once again be running. The children will be kept busy with various art and craft activities.

In the evening an "Open Stage Night" will be held in the Memorial Hall. Just come along and put your name on the blackboard to be guaranteed your 15 minutes of fame. There will be a door charge of \$5.00 per person. BYO drinks and food. Just a short walk down the road, the Boolarra Hotel will have live music, so feel free to come and go between venues to be sure to get the most out of your evening. A family dance will be held at the Boolarra Football Club in the evening. The entertainment will be provided by bands such as the ever popular Strzelecki Stringbusters and River Crombie. The door charge will be \$5.00 and drinks will be available at the bar. This would be a great place to finish off the evening before camping out at the football ground.

The success of the festival relies heavily on the generosity of our volunteers. We are in desperate need of extra hands on the day. If anyone would like to be put on the roster for car parking or in the Kids Tent, please contact Wendy Stewart on 5169 6275.

So come along prepared to enjoy a day under the trees in one of the most beautiful parks in Gippsland. Don't forget to bring sunscreen, hat and something to sit on.

The committee are delighted with the support received from local businesses such as the Courthouse Cellars Warragul, GippsTAFE, Massaro Motors, WIN TV, 3GV, Latrobe City, Maryvale Electronics, International Power Hazelwood, 39 Construction Squadron Royal Australian Engineers, Arts Victoria, Festivals Australia, M.D Productions, REH Cork Club, MECU Credit Union, Coates Hire, Gippsland Water and, of course, the ongoing support and goodwill from the Boolarra Community and businesses.

CHURCHILL

ACCOUNTANT

TONY ANTONELLI

NTAA

National Tax Accountants

Income Tax Returns (Fee From Refund)

Financial Advice

GST Assistance

MYOB QUICKBOOKS QUICKEN

OR MANUAL

5122 2058

pba@vic.australis.com.au

Latrobe Community Health Service Inc.



We are seeking an enthusiastic and highly motivated individual for the following position:

Casual Receptionist/Administrative Support Worker (Churchill)

The role of the Receptionist/Administrative Support Worker will be to undertake a range of reception and general office support functions, including providing Front Office reception/administration duties for community health services and a busy medical practice.

The incumbent will possess excellent customer service skills, the ability to handle busy periods with composure and possess excellent computer skills. The incumbent will also need to be adaptable and available to work at short notice, work Saturday mornings, until 6pm week nights and during school holidays.

Applications received for the above position must address the relevant selection criteria contained within the position description and include a signed mandatory cover sheet. This documentation can be downloaded from our website: www.lchs.com.au or obtained from Ms Melissa Knowles by telephoning 03 5171 1405.

**Please forward applications by 4.30pm
Monday 21 February 2005**

...partners in health and well being...

Young Environmentalists Gather Winners make 2004 awards a global affair



By NEIL LAWSON

It was one of those defining and quite surreal moments in one's life.

My wife, son and I are watching with pride as our nine-year old daughter takes receipt of an award in front of 300 guests at London's Dorchester Hotel. So what are we doing in London? In fact, why are we here at all?

It was a question we asked many times – during our trip and in the few weeks leading up to our departure. After all, a trip to the UK was not on the Lawson family radar at all. Al fond wish perhaps and maybe even an entry on that 'Must Do One Day' list we all ponder from time to time. But Caitlin's good fortune from a cleaver project came as a stunning bolt from the blue.

Her entry into the 2004 Young Environmentalist of the Year Awards (YEYA) was a modest but personal one: a school project on peacocks around the world, their habitat and diversity. But with an eye and skills for craft work (definitely from her mother), she crafted a model peacock made from various bits and bobs that clutter the family study. Off went the entry and I guess the rest is history.

But back to the Dorchester!

Situated off London's leafy Park Lane, the Dorchester was a memorable setting for the YEYA event. And as a participating sponsor, International Power, was able to parade their two global winners alongside the winners from other international businesses. Indeed the roll call saw young environmentalists from Chile, Canada, Pakistan, Australia, Scotland and the UK called to the stage to receive their Otter statuette. Caitlin received hers from "Percey Weasley" from the Harry Potter movies.

Flanked by celebrities from many decades of the British stage, screen and popular media, these talented children were afforded an experience they will surely never forget.

As I said, my wife and I were very proud of Caitlin. She got up on this stage and thanked International Power – a brave and inspiring thing to do at age 9. Now she goes into the history books along with IPR's other winner, Qasim Mahmood, the 13 year old son of the Mahmood family from Hub Co in Pakistan. And she follows in the footsteps of Marnie Peterson who flew the Hazelwood and Australian flat at the 2002 YEYA's.

The rest of the London trip was a blur. Seeing the sights, meeting people and taking on the public transport system combined with a healthy dose of jetlag meant we were always 'on the go'. It was great fun and the children had a wonderful experience.

Of course, we could not have had better hosts for our visit. Lisa and Nicola from International Power's London office looked after us so well and we will always be grateful for their friendship and assistance.

The trip to the UK afforded us the opportunity to visit family in Scotland and returning to Australia via the US meant we fulfilled another one of our family ambitions for our children – yep, Disneyland!

Needless to say they loved it, Sarah and I rekindled memories from our 1991 visit and the Visa card got a fair-dinkum hiding. And either the rides are getting hairier or I'm getting older!



The opportunity and the experience is one that my family will simply never forget. And that is why I'll plead that as many Hazelwood employees with children 8 – 16 enter this competition as possible. To be afforded this trip was very special indeed. And importantly, it begins the process of young people understanding their key role in shaping environmental consciousness into the future.

Pictured left: Caitlin proudly stands in front of the winning displays; above: the Lawson and Mahmood families with their awards along with IPR's Phil Cox and Steve Riley



Churchill Primary

A good start to the year

CHURCHILL Primary School started the year smoothly, with an enrolment of 230 students.

All staff were welcomed back enthusiastically, with the wish that all were refreshed and ready for another busy year of work at the school.

Special welcome was made to three new staff members, Andrew Greco, Brooke Henry and Sue Davis. Andrew and Brooke are first year teachers who completed their fourth year internship at Churchill Primary School in 2004. Andrew will teach in the 5/6 area and Brooke will teach Preps. Sue Davis will be working as the School Improvement Officer.

There was a warm welcome back from long service leave for Charlie Twomey, John Turner and Helen Dyson, all of whom enjoyed their various activities.

Walking School Bus

This was a successful initiative of 2004 and has already re-commenced this year. It will run in Terms 1 and 4.

However a program such as this is dependant on volunteers, and many more are needed to ensure this great way of getting kids to school is maintained. There is a particular need for helpers in the afternoons at 3:20 pm.

If you would like to help please contact Jo or John at the school on 51221343, or Ruth on 51221961.

Breakfast Program

This program was also a successful venture of 2004, and has again commenced to provide a good start to the day. Again extra volunteers are needed to fill vacancies created by changes in people's lives.

Again if YOU can help, please contact the school on the numbers as above.



**Miss Brooke Henry, Prep Teacher,
Mr Andrew Greco, Gr 5-6 Teacher,
Mrs Sue Davis, School Improvement Officer**

Community Learning In Churchill [CLIC]

This is a school initiative to help parents to support their children at school.

The workshops will be fun and different, focusing on ways to develop and improve literacy skills for parents, but other adults are welcome to attend.

It will commence in Term 2. People of all abilities will be catered for.

This program will be sponsored by a number of agencies. More details will follow next issue.

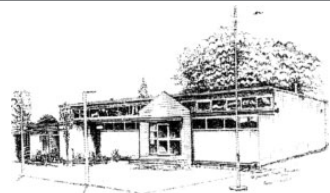
If you are interested in the program and want further information please contact Jo or John at the school on 51221343.

Athletics Sports

Term 1 is always busy with house and district sports days. Dates will be published in the school newsletter. All parents, relatives and community members are welcome to attend these days.

Election of Student Leaders

In the first few weeks of school, students are being elected by their peers to take on the important roles of School Captains, School Vice Captains, House Captains, and Junior School Council representatives. All staff at the school encourage student's participation in some of the decision making at the school.



A Positive Start to the School Year

Hazelwood North Primary School

THE 21 Prep students have settled into the school routine quickly.

This year there are seven grades ranging in size from twenty one to twenty five students.

The specialist subjects are Art, Music and library.

A Back to School Barbecue was held on February 7th.

Grade information sessions will be held the week beginning February 14th.

A new Junior School Council has had its first meeting.

Parents' Club and School Council Annual General Meetings will be held later in February.



The photographs show some of the 2005 Preps at play during their first week of school.



Possums of Yinnar Playgroup Inc.

0027453X

PO Box 27
Yinnar Vic 3869

OPEN DAY

You are invited to
the 2nd FREE Open Day at the Yinnar Memorial Hall for the Possums of Yinnar Playgroup.

When: March 22, 2005

Time: 9.30am - 11.30am

All parents/carers of children aged between 0-5 are welcome to come along and join in the fun.

Lucky Door Prize

Balloons

Activities

SPECIAL guest for the children

For Further details phone Samantha on 5163 1312 or
Debbie on 5163 1268

Kurnai College Parents & Friends Association



Churchill Campus

THE Kurnai Churchill Parents and Friends Association will meet on Wednesday 16 February at 7.30pm in the campus staff room. Parents (and grandparents, aunts, etc) of students (and former students) are always welcome to join us. Campus Principal, Geoff Block, will also be in attendance, along with representatives from the College Council.

Our second-hand uniform shop (in the storeroom near the Drama Room) will be open from 1.30 to 3.00pm, every second Friday, commencing 4 February, until further notice. We only accept cash for payment. If you are unable to attend at this time, please ask your child to select clothing on your behalf and collection of uniforms can be arranged on receipt of cash payment.

The Kurnai College all campus courier service,

organized by Churchill Parents and Friends, is in need of volunteer drivers. The courier runs are on Tuesday's and Thursday's during school terms. Fuel reimbursement is paid (at a set rate) at the end of term. Contact the Secretary, Deb Brighton, on 5122 2160 if you're interested or come along to our meeting on February 16.

All funds raised from the courier service and second-hand books and uniform sales are used to purchase items for Churchill Campus. Last year the Association was able to purchase a new egg incubator for the Science Room, along with some other items requested by staff for the benefit of students.

Parents of new Year 7 students are particularly welcome to attend our February meeting. It is a great opportunity to meet with other parents and the Principal in an informal setting.

Morwell Art & Framing

Custom framing
Large variety of art supplies
Your artwork is handled & framed
by Artists, giving you a professional edge.

Satisfaction guaranteed.
Fast, efficient service.
Services include lamination, block mounting,
canvas boards made to order.

Lea & Rod Jones
49 Chickerell Street, Morwell 3840
Ph: (03) 5134 5515
Fax: (03) 5133 7078



Art Classes throughout the year

Professional Tutor

For more information ring 5134 5515

Calling All Groups Clean Up Australia Sunday March 6



THE Co-Operating Churches of Churchill will again be taking part in the Clean Up Australia day activities.

They will clean up the park between McDonald Way and Walker Parade, the gardens along the path to the shops, and down McDonald Way to the roundabout near the Fire Station.

We start about 11:00 am and finish about 12:30 pm.

All people who would like to join us are welcome, but you must first register with the site manager Ruth, so you are covered by insurance.

Also no unaccompanied children will be able to participate.

The Lions Club clean up at the Lake Hyland end of Mathison Park. They also

would like some extra help.

BUT, again, you must find the Site Manager and register.

There are many sites in Churchill which could do with a clean up.

If you are a sporting group, Scouts, Guides, School etc. you may like to organise your own clean up area.

Schools can do their clean up on the Friday before.

For more information about registering your site, please contact Wendy at Events Latrobe on 1300 367 700.

Latrobe City Council will ensure you have bins for what is collected, bags and gloves.

Jeeralang North Hall Old Time Family Dances

BY ZELMA MILDENHALL

THIS year an old time family dance will be held each month in the Jeeralang North Hall on the fourth Friday of each month.

Please note that there will be no dance in March, as the forth Friday is Good Friday.

The next dance will be held on 25 February from 8.00pm to 11.30pm.

Music will be by Harmony Plus and admission will be \$5.00. Please bring a

plate.

Sandwiches will be provided by the committee.

For more information contact the Secretary, Zelma Mildenhall on 5166 1264.

The Jeeralang North Hall is for hire. It has an excellent dance floor, heating and is in a rural setting.

Contact Zelma Mildenhall on the number above.

'YouSee' Op Shop Opening Soon

(St. Luke's) Morwell Uniting Church, Princes Drive Morwell is pleased to announce the opening of its 'YouSee' (U.C.) Opportunity Shop on Wednesday 23 February 2005 at their premises.

Good, Clean clothing donations,

especially men's and children's are welcome now.

Spare coat hangers would also be appreciated.

More details to follow next month.



***Dr Fred Edwards** ***Dr Alex Sossin**
***Dr Julian Fisher** ***Dr Vera Nikolic**
Bulk Billing

- * Family Medicine
- * Minor Surgical Procedures
- * Industrial Medicals
- * Visiting Paediatrician
- * Women's Health
- * Counselling
- * Pathology Service
- * Visiting Surgeon

* Visiting Physiotherapist
* Travel & Health Immunisations

Consulting Hours

Monday to Friday 8am - 5.30pm
Saturday 8am - 1.30pm
24 hour on call service

Telephone: 5122 2555

HAZELWOOD HEALTH CENTRE
Hazelwood Village Shopping Centre
9a Georgina Place, Churchill, 3842

"Caring Family Medicine"



Valentines Day!!

DON'T FORGET!!!

Monday 14th February
Fresh Flowers

Teddies

Gift Packs

Shop 16

Hazelwood Shopping Village
Churchill



Phone us: 5122 1500

Fax: 5122 2222

Mobile 0412 946 051

February Health Tips Flu facts - tips and treatment

THE flu is caused by a highly contagious virus, which is spread by coughs and sneezes.

Flu epidemics occur when there are minor changes in the nature of the virus so that more people are susceptible.

Pandemics (world-wide epidemics) occur when there are major changes in the virus and can cause very large numbers of deaths. There are three types of flu virus - A, B, and C. Influenza A is more likely to cause epidemics.

Flu symptoms develop one to three days after infection and include: High fever, chills and sweating Weakness, Headache and generalised muscle and joint pains (legs and back) A non-productive cough that can later become more severe and productive.

Flu versus the common cold

The flu is more than a bad cold: Cold symptoms last one to two days while the flu can last up to a week. The flu causes a high fever.

A cold sometimes causes a mild fever. Muscular pains and shivering attacks only occur with the flu. Colds cause a runny nose while the flu usually starts with a dry sensation in the nose and throat.

Serious complications are rare. In a small proportion of cases flu will lead to: Secondary bacterial pneumonia - occurs when bacteria

invade the lungs. Symptoms include shortness of breath, green-yellow phlegm, chest pains and a temperature. Mortality rates are high but it is less lethal than primary influenza pneumonia.

Primary influenza pneumonia - almost always results in death. Symptoms include difficulty breathing and blue discoloration (cyanosis).

Inflammation of the brain or heart - can occur during recovery from the flu. Reye's syndrome - leads to liver degeneration and is fatal in 10-40 per cent of cases. Children under 16 years should not be given aspirin as it increases the risk of Reye's syndrome.

People at risk of complications are more common among patients with an underlying medical condition or reduced immunity. Flu can increase the risk of death or serious complications from the underlying disease.

Flu treatment

The recommended treatment for flu is: Bed rest until the temperature has been normal for 48 hours. Drink enough fluids to maintain normal urine output. Take paracetamol to control fever, aches and pains (adults can use aspirin).

Early use of anti-viral medication may shorten the length and severity of illness. Consult a doctor to discuss treatment.

Avoid exposure to dust, alcohol, fumes, and tobacco smoke as much as possible.

Consult a doctor if symptoms such as difficulty breathing, coughing up green-yellow phlegm or severe headache develop.

Flu immunisation is recommended for older and at-risk groups. Yearly immunisation against the flu and five-yearly against pneumococcal pneumonia is recommended for: Everyone over 65 years. Koori and Torres Strait Islanders aged over 50.

Adults and children with chronic heart, lung or kidney disease or metabolic disorders such as diabetes.

Adults and children receiving immunosuppressive treatment (including long term steroids).

Residents in nursing homes or other chronic care facilities.

Where to get help?

Your doctor, Department of Human Services, Public Health Division, Your local Community Health Centre.

Things to remember, The flu is not a bad cold. Flu can occasionally lead to serious complications including death. Older and at risk groups should be immunised every year against the flu.

This article has been sourced by Hazelwood Health to provide up to date information on topical subjects.

Morwell RSL Sub Branch Inc.



5134 2455
BISTRO
OPEN 7 DAYS
LUNCH & DINNER

All functions catered for
Rooms Available for:
Meetings, Conferences, & Seminars

Entertainment for February

Friday 11th	Crash the Party
Saturday 12th	Cop-E-Cat
Friday 18th	Major Tom
Friday 25th	Bak 2 Bak
Saturday 26th	Misty

MARCH RED CROSS CALLING MONTH

Red Cross needs volunteers in March to help keep its services operating in Victoria by being a collector.

The community has been very generous with its donations to current overseas appeals, but hopefully people can dig a

little deeper into their pockets to support local needs as well.

Please contact Bev on 51223602 or AH 51222375 if you think you'll have some spare time in March to be on our collection team for the Churchill area.



Scott Gardiner launches 'Glimpses of Gippsland'

Neighbourhood Centre Book Launch

'Glimpses of Gippsland'

WELL known local author, Scott Gardiner, launched the Creative Writing Groups third book called "Glimpses of Gippsland."

The Creative Writing Group under Cora Pal, consists of twenty people with eighteen writing stories, after research, for the book.

It is a compilation of stories about Gippsland characters and landscape.

Articles range from humour to sorrow, through landscape, wildlife and history.

John McWhirr designed and completed the artwork for the cover, and some of the inside illustrations.

The book sells for \$8, and copies may be obtained from the Neighbourhood Centre, or contact Cora on 51221611

'A Step in the Write Direction' by Sandra Lynn

Scott launched Sandra's work enthusiastically about the practicality of a book which outlines many, many ideas for those who want to write and sometimes need a starting idea, to motivate them.

It is designed to help people explore different angles, areas and topics, but mostly just to help people have a go.

The book costs \$6 and is available from Sandra by ringing 03 51743668.

Neighbourhood Centre Singing Group

The Sounds Like Singing Group opened the Churchill Neighbourhood Centre breakup in December during which certificates were awarded to the year's tutors.

The group accompanied by Gordon Oakley and Bev Thompson, also entertained the Hazelwood House Residents with a selection of Christmas Songs and Carols.

Lioness Club of Churchill and District

By Margaret Barker, Publicity

I trust you all had a great Christmas (it seems like ages ago already) and a happy start to the New Year.

Our club has a bit of a break from our busy schedule over Christmas with just a little maintenance of the Hazelwood House rose garden and a small catering job.

Our end of year breakup get-togethers were again very successful with lots of fun for all.

We are at the moment looking forward to "Break Away" where the Lioness Clubs of Victoria meet together to discuss business and generally have a good time. This year it is being hosted by the Lioness Club of Yarrowonga.

Our first meeting for 2005 will be held at the Yinnar Hotel on 8 February. If you would like to join us please



Hazelwood House Rose Garden

phone Vicki on 51221614 or Marilyn on 51222543
Best wishes for the New Year.

Lions Club of Churchill & District - A new year begins

By JOHN BARKER, Publicity

THE Lions Club of Churchill and District ran its 3rd Community Australia Day on 26 January. Attendance was the best ever with an estimated 180 people. Churchill's youth dominated with Guides and Scouts reading the meaning of Australia Day and raising the flag. The highlight was undoubtedly the announcement of Ruth Place as the Lions Club of Churchill & District Citizen of the Year. Lion President Norm Hall presented Ruth with a commemorative plaque.

Camp Quality presented the club with a plaque in recognition of our fundraising for the esCarpade in 2004.

The Lions and Lionesses and families had a Christmas break-up at the Hazelwood Pondage complete with a visit from Santa.

The annual Outdoor Expo at Kernot Hall is coming up on 18, 19 and 20 February. This is our major fundraiser and is always very successful both as an Expo and as a source of funds.

Snippets:

*Letters to Santa another huge success - approximately 200 through local schools

*Christmas tree project was another huge success - thanks for your continuing support.

*Santa visits - many conducted, loved by all

*Christmas cakes almost sold out - several donated to groups and organisations

*Club donated \$200 to the Churchill & District News sponsored Gippsland Cancer Care Unit fundraiser

*Working bee at Licola Village to finalise carpet laying and painting.

*Visit by District Governor George Radford

*Donation \$500 to Salvation Army for hampers for local families

*Purchased fundraising pavers for Rotary Centenary House

*Members assisted at Traralgon Tsunami Wave Concert

Catering: Catering at Bunnings in December - always a good fundraiser. Proceeds go to Camp Quality so please continue to support our members in 2005.

Catering at Bunnings in February - Proceeds go to Lions Tsunami Appeal

Catering for Royal Childrens Hospital Fundraiser at Saloon Bar

Awards: Lion John Tipping - 42 year appreciation certificate, Lion Steve Duggan - 100% President (Morwell)

The Lions Birthday Club, sponsored and run through the Churchill & District News by our Lions Club, is a great hit. Dylan Lamont and Jamie Rowley were each the happy Birthday Club recipients of a \$15 voucher in December. Our January Birthdayites are being included in this issue of Churchill News. All children in Churchill and surrounding areas under 12 years of age are eligible to join. IS YOUR CHILD A MEMBER? IF NOT, WHY NOT? Make sure your child is registered - just follow the instructions in the Lions Birthday Club list published each month.

To all the families in our great community of Churchill and surrounding district, we thank you for your support. Need to contact us? Our address is The Secretary, Lions Club of Churchill and District, PO Box 110, CHURCHILL 3842.



Santa on the fire truck



Captain Steve Barling accepts a donation of breathing equipment from Monash

Churchill Fire Brigade

By RUTH PLACE

Santa Runs

THE fire brigade helped Santa attend 18 functions in and around Churchill. Both the Fire Brigade and Santa were glad when Christmas was over.

This is just another example of the devotion to our community given so freely by your Fire Brigade!

The Brigade is now setting its sights on the Fire Season, and they remind everyone not to be complacent with all the cool weather and rain. These two factors will only contribute to the fuel source should the weather dry out and we have our usual hot February days.

Cleaning out Spouting

In my travels around town I have noticed many house spouts full of leaves and twigs.

These are fuel for fires that may spread near our town. Flying embers can easily land in your spout filled with leaves and set houses on fire.

Fire Plugs

The Latrobe City Council is now responsible for the maintenance of fire plugs.

A serviceable fire plug may be the difference between a house being saved or not in an emergency.

Please look after fire plugs outside your place, and report any damage to the Latrobe City Council's Asset Maintenance Officer.

Breathing Apparatus

Monash University recently donated two breathing apparatus sets to our brigade.

KATS hair design

Beauty Room

Free Nail Art with every buff & polish
Normally \$20.50. SPECIAL \$15



Mens Chest & Back Wax \$22.00 each

On Presentation of this advert
February Only

Appointment Essential

**Shop 4 Hazelwood Village
Churchill Victoria 3842**

Tele: 03 5122 3311 or Fax: 03 5122 1499

RETIRED OR RETIRING SOON? KNOW ABOUT U3A?

THERE are Universities of the Third Age all over the world, catering for men and women in the period of their lives after the First Age of childhood, Second Age of employment and parental responsibility, and now their Third Age, often called the age of active retirement.

The Latrobe Valley University of the Third Age (LVU3A) in common with U3A's elsewhere offers retirees and semi retirees access to a wide range of interesting courses.

Operating out of the I-GAIN complex, at the western end of Commercial Road, Morwell, the invitation to join is open to men and women across the Central Gippsland region.

The Prospectus for 2005 offers a diverse range of subjects of educational, creative and leisure/recreational content such as: art, bush walking, literature, sociology, gardening, history, languages, computers, craft, tai chi, creative writing, current affairs, ...and the list continues

to grow!

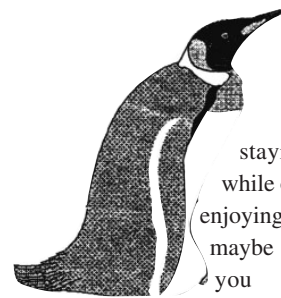
LVU3A seeks to further participant's interests in a spirit of friendliness and enjoyment. Courses are not intellectually driven, nor are qualifications required or given.

Our course leaders are members with expertise in their particular fields and a love to share their knowledge. A desire to be active in retirement is all that's needed to join.

Enrolment days for 2005 are Thursday 10th and 17th February at the U3A Office at I-Gain.

For a membership fee of \$30, members can attend as many or as few courses as they choose.

Some course run for a limited time, other's are ongoing. Come along and check out course information from our prospectus on the enrolment Day, visit our web site on www.lvu3a.org.au, or contact Kevin Jackson on 51 22 1317 for more details.



Home Alone?

SICK of staying home while others are out enjoying life? Well, maybe we are what you need!

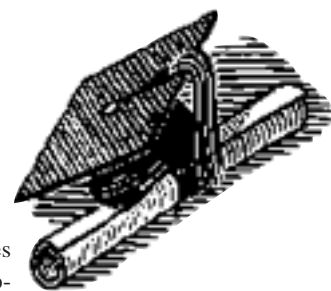
T.O.F.F.S. - The Over Forty Social Singles is a friendship group for single people over forty. We meet every Friday for dinners at various venues, have monthly meetings, outings and,

above all else, lots of fun.

If you think this may be what you are looking for then ring one of the following numbers to find out more about our organization.

Janet: 5133 9854. Di: 5134 5960.
Jenny: 5174 2717. Norm: 0403 961324.
Barb: 5134 2126. We will arrange to mail a calendar of upcoming events.

LOCAL GIRL GAINS DOCTORATE



SHAHAN Campbell was born at the Traralgon Hospital. From age two Shahan grew up at the family property in the Jeeralangs, built by her parents, Bruce and Ruth.

Primary schooling was at Churchill North Primary School, which was followed by Secondary schooling at Kurnai College Campus Churchill and the Kurnai Campus Maryvale, Morwell.

Shahan was in the first year of students to do the full VCE Year 12 certificate.

She passed well and was accepted into

Melbourne University to study a Bachelor of Science degree.

Science was always a subject which interested Shahan, but choice of subjects was made to keep options for other avenues open.

Shahan studied lots of music, as one of those other options. However this made the inclusion of Biology impossible.

This was part of the Science degree course. Shahan found it difficult and had to work very hard to succeed. But succeed she did!

Although she passed her undergraduate

degree, Shahan did not really enjoy the experience.

However when she did her Honours degree in Biochemistry, she thoroughly enjoyed it. As she explained, you are encouraged to think for yourself and make decisions about the experiments you do, so there was a certain freedom of responsibility of your work.

The next step was to take up work at the Macfarlane Burnet Institute for Medical Research and Public Health, which is adjacent to the Alfred Hospital and also has an infectious diseases ward.

There is an interesting co-incidence here. Macfarlane Burnet was Traralgon born, as was Shahan!

For two years Shahan worked as a Research Assistant, in the AIDS Pathogenesis Unit assisting a HIV-based project that someone else was leading.

During that time she learnt many cell culture techniques, developing some of her own.

Then she applied for and received, a scholarship to do her PhD with Dr Johnson Mak as Supervisor, and Professor Suzanne Crowe as Co-Supervisor. Johnson and Suzanne were very supportive and influential, for which Shahan is very grateful.

Shahan's project for her PhD was a study of HIV/AIDS. HIV (Human immunodeficiency virus), is the virus that causes the deadly acquired immunodeficiency syndrome or AIDS. Currently, over 46 million people are living with HIV and close to half of this number are women.

The painstakingly slow progress towards developing an effective HIV vaccine shows the urgent, immediate need to develop an interim measure for women, especially those in develop-

ing countries such as Sub-Saharan Africa and South East Asia where HIV-1 has economically crippled these countries, and where condom use is not an option, due to cultural, social and financial considerations.

To confront this problem, the invention of a topical vaginal cream to combat the virus, for women to use for their own protection, is most important.

Shahan's work has researched the role of cholesterol found in the fatty coating around the outside of the virus.

The cholesterol content is critical for the virus to remain infectious and maintain its structure.

Her work has identified cholesterol-like molecules that interact with HIV so as to substantially reduce its ability to infect.

This important research will be able to be applied to the development of the urgently needed cream for women. It is a very important addition to ongoing research in this field.

Researching and writing your PhD is an extremely time and energy consuming task.

To complete her work, Shahan left the Burnet Institute, to return to the University of Melbourne's Microbiology and Immunology Department. There she is working with the HIV vaccine group.

Some work has been tested on monkeys, but nothing is classified as successful at this time.

Shahan is very pleased to have done the work she has. She describes her PhD work as a strain, but an accomplishment which she was glad to finish.

Life is now normal, which means a holiday can be considered.

Pictured left: Shahan Campbell

Beautiful Saturn: Now Visible

By JEFF SING

SATURN, the most majestic planet in the solar system, accompanied with breathtaking views of its ring system, came into opposition on January 14 this year.

Oppositions of the outer planets occur when the Sun, Earth and outer planet are in a straight line.

During opposition the planet rises in the east around sunset, reaches its maximum altitude (when positioned due north) near midnight, and sets in the west around sunrise the next day.

Oppositions of Saturn occur every 379 days or approximately 14 days later each year from the Earth's perspective, in its 29.5 year journey around the sun. During February Saturn can be seen low to the north-east, well below the constellation of Orion (otherwise known as the Saucepan or Pot) but a little towards the right: near two moderately bright stars, Castor and Pollux, in the constellation of Gemini.

This second largest planet in the solar system is fairly bright to the naked eye, rivaling even the brightest stars in Orion. It will reach a maximum altitude of 30 degrees above the horizon (or one third of the way from the north point on the horizon to the zenith – the point directly above one's head) around 10.00pm summer time for most of February; and then reach the meridian (through the north-south line, extending from the horizon to horizon through the zenith) earlier and earlier during the next few months. Saturn looks fairly small in a telescope but never disappoints with an appeal of a strange world which provokes much wonder.

On Christmas Day 2004 the International Cassini Spacecraft (launched in 1977) successfully released the Huygens probe on its journey towards Saturn's largest moon, Titan.

On January 14, 2005 the Huygens probe descended into the thick nitrogen atmosphere of Titan. Titan is the only moon in the solar system that retains a substantial atmosphere.

Samples of the atmosphere revealed a uniform mix of methane

with nitrogen in the stratosphere from 160km above the ground downwards, and a concentration of clouds of methane was discovered about 20km in altitude, with methane or methane fog near the surface.

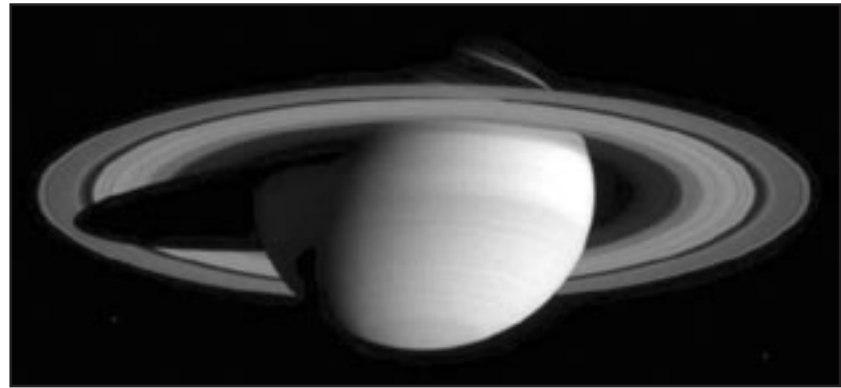
When the probe landed it was not a 'thud' or a 'splash' but a 'splat'. The successful landing provided incredible views of Titan's landscape which revealed a landscape modeled by erosion with drainage channels, shoreline features and even pebble-shaped objects on the surface.

The texture of the surface, according to the European Space Agency (ESA) 'resembles a mixture of wet sand or clay with a thin solid crust and its composition as mainly dirty water ice and hydrocarbon ice, resulting in a darker soil than expected. The temperature at ground level was about -180 degrees Celsius'.

The purpose of the mission was to investigate the conditions on Titan which may provide astronomers with clues to the Earth's early formation. The Australia Telescope national Facility ground-based radio dishes played a key role in communication with Cassini and its Huygens probe.

For more of the latest information on the Huygens probe and the Cassini mission visit one of the many websites devoted to the exploration of Saturn, and astronomy in general, such as <http://www.saturn.jpl.nasa.gov> or see the European Space Agency's Cassini- Huygens website.

On February 27 this year Jupiter will be occulted by the Moon. An occultation is when a celestial body such as Jupiter passes behind another body such as the Moon. The occultation is best viewed in places such as Hobart, Perth and Auckland. From the Latrobe Valley the event is called a grazing occultation where



Jupiter disappears only for a few minutes behind the north-east edge of the bright limb of the Moon. The graze will start with Jupiter passing behind the Moon around 11.51pm and reappear at 12 midnight summertime.

These times are for those residents living in Melbourne and you will need to adjust the times for at least a window of ten minutes earlier to glimpse the event from the Latrobe Valley.

The occultation can easily be seen with the naked eye, for Jupiter is brighter than any star. Binoculars or small telescopes at low magnification will provide breathtaking views.

The Latrobe Valley Astronomical Society will hold its next monthly meeting on Tuesday March 8 at the Wirilda Environment Park Conference Centre, near Tyers, starting at 7.30pm. 'How to Observe the Solar System' will be discussed, followed by an observing session of the planets visible at the moment providing the skies are clear.

Any members of the public are welcome to join in this informative night.

For further details contact Gavan Dinsdale on 5174 6453 or visit the Society's website at <http://www.home.vicnet.net.au/~lvas/>.

Diabetes Prevention Program Back for 2005: Feel Great- Activate

LATROBE Community Health Service in conjunction with the Central West Gippsland Primary Care Partnership is coordinating a Diabetes Prevention Program. The program, Feel Great- Activate, is a six week self-management program designed to prevent or prolong the onset of type 2 diabetes. It will provide the skills and knowledge to live a healthy balanced lifestyle through weight loss, improved nutrition and physical activity. Expert Health Professionals will be conducting the education sessions and VicFit trained staff will be running the physical activity component.

Project coordinator, Stacey Podmore, commented on the successful outcomes participants have achieved as a result of attending the program. "Participants have achieved weight, hip and waist circumference loss and improved their overall general health and wellbeing through increasing their physical activity levels as well as making positive lifestyle changes," she said.

Previous Feel Great- Activate participant Graham

found the program extremely beneficial, "because of the motivation and enthusiasm engendered by Feel Great-Activate, my general health has improved markedly," he said. "Improvements have been noted in my breathlessness, blood pressure, cholesterol and weight. My motivation levels have continued beyond completion of the program and I have maintained my exercise regime of regular walking and water aerobics," he continued.

Feel Great- Activate programs will be offered throughout 2005. Weekly sessions will run for two hours.

If you have been diagnosed with pre-diabetes (Impaired Glucose Tolerance) or are at risk of developing diabetes (i.e. are overweight, have a past history of heart disease, are physically inactive or aged 55 years or over) then this is the program for you.

For further information or to register please contact Rebecca Cheers at Latrobe Community Health Service on 51 365 427

Churchill and District Community Association

By Margaret Guthrie, President

THIS year is the 40th Anniversary of the gazettement of Churchill and the establishment of our town. It was wonderful to see the inaugural Churchill Citizen of the Year presented at the Australia Day Ceremony in Churchill, organized by the Lions Club. Congratulations to Ruth Place for all your hard work and contributions to our community and becoming the first "Churchill Citizen of the Year".

CDCA hopes to see a variety of community events occur this year, to celebrate our town's 40th Anniversary, culminating in a 'grand finale' community event in December.

We encourage all service organizations, sporting clubs and other community groups to hold their own event or celebration, and contribute to a combined December celebration.

Latrobe City Council, through its Community Grants Program, has provided CDCA with limited funding to support celebrations in Churchill. We welcome your ideas and suggestions, and hope to see a number of activities occur throughout the year to form a 'Calendar of Events'. We'd be very happy to help support, assist and promote your event.

Our first Committee meeting, held on February 1st, discussed ideas for our Anniversary celebrations. We hope to have a firm date for a December event set by our March meeting and will advise the public of the date and early plans via this column and our website (www.churchill.gippsland.com).

Other items considered included plans for the proposed Churchill Intergenerational Hub, new building subdivisions proposed for the western end of Canterbury Way West, and some minor safety issues that have been brought to our attention.

Thanks to Kay Jellis from LCC for her attendance and input into discussions. CDCA, through its direct link to Council via Council representation at our meetings, can often assist residents to resolve local issues expediently, and provides a forum for regular communication between Council and Residents.

CDCA meetings are held on the first Tuesday of each month at 7.30pm in the Link Room at Monash University. All residents of Churchill and district are welcome to attend and have an input.

Contact the Secretary, Rob Whelan, on 5122 3602 for further information or write to PO Box 191, Churchill 3842.

Relief, Recovery and Rebuilding: LCIF/Lions and the Tsunami Tragedy

By JOHN BARKER, Publicity
LIONS Clubs International Foundation (LCIF) is the grant-making arm of the Lions organisation.

The unparalleled tsunami disaster in South Asia has led to an unprecedented LCIF initiative supporting rebuilding of communities.

LCIF has approved an initial US\$5 million commitment to assist in the recovery.

The funds will enable Lions in South Asia to rebuild homes, schools and child welfare centers for orphans and to provide for psychological treatment and physical rehabilitation for children and emotional counseling for adults.

The US\$5 million is a matching donation from LCIF. Half will come from LCIF reserves, and the other half from donations to LCIF from Lions for tsunami relief.

Lions in South Asia already have spent an estimated \$820,000 on relief, including \$220,000 in emergency grants sent to them by LCIF.

Lions have provided hundreds of thousands people with food, water and

medicine.

Immediately after the tsunami, Lions quickly sprang into action to provide immediate aid to survivors and worked with government officials on planning for long-term reconstruction.

Thousands of Lions in many towns and villages fanned out to provide vital supplies and began to lay the groundwork for long-term rebuilding.

"The tsunami disaster in South Asia prompted a tremendous outpouring of support from Lions around the world, and Lions in the affected countries worked day and night to bring essential supplies to victims," said LCIF Chairperson Dr. Tae-Sup Lee.

"Thanks to Lions, victims are receiving necessary food and water and communities will be rebuilt."

The real impact of LCIF's assistance to tsunami victims in South Asia will be fully realized in the next several years as LCIF partners with Lions to meet the long-term needs of communities.

This approach plays to the strength of LCIF and Lions, who belong to their communities, understand local needs and know how to get things done.



LCIF Tsunami Rebuilding Project – inspecting the damage

The Lions Club of Churchill and District has started to "do its bit" with a direct donation of \$600 and more to come from nominated projects, as well as helping at the Traralgon Tsunami Wave Concert.

The Shaw Family History

Written by Alec Shaw

Edited by Ruth Place

On the trail of yet another history behind our street names, here in Churchill,

I headed out to Walsh's Road to call and see Alec and Ann Shaw. As with the other wonderful farming people it has been my privilege to meet and share their story.

The Shaws willingly agreed to put together their history for my next visit.

We spent several hours getting to know each other over a cuppa and found we had a lot of common links, one being that Ann and I are both Yallourn High School Old Girls. We parted, myself feeling I had made new friends.

The name Shaw is derived from an obsolete Gaelic word, variously thought to signify, "pithy", "proud" or "princely". The Shaws are one of the oldest and principal clans of the ancient confederacy of the Clan Chattan (Clan of Cats).

When next I called, Alec had collected and collated the family history, so we begin the Shaw story with Archibald and wife Ann (McDonald) migrating to Australia from the Isle of Mull (Scotland).

They landed in Adelaide in 1851. By the early 1870's, they had made their way to Gippsland, where a square mile (640 acres), was shared by two sons Colin and Donald. Colin was to leave for Western Australia, but Donald stayed on the southern block which was between Bolding's Road and Church Road, with the western boundary being Tramway Rd.

The property was known as "Otterburn". Steven Darling and family are dairying there today, opposite the Electrical Switchyard in Tramway Road.

Donald and wife Lily (Gardiner), had eight children - Ann (Mrs.J. Bolding), Arch, Laura (Mrs.C. Billingsley), Don, Bill, Victoria (Mrs.H. Vinall), Alec and Charlie.

Donald was very civic minded and became the first shire president in 1892. The separation from Traralgon Shire was an affair that dragged on over several years. One of Donald's sons Bill, was also to become a councillor from 1921-24.

Bill was one of the first to organize steam power to run the early 'Ridd' milking machines. He also began the Iceworks in Morwell when people began to upgrade from Coolgardie Safes to ice-chests.

As young people the Shaws from "Otterburn" had plenty of work, and had to make their own fun with what was available at the time. They made plenty!

Athletics after milking was popular. They had their own records for events like the hop, step and jump, 100yards, high jump etc. Alec, one of the younger boys, was pretty athletic and was able to scissor jump 5 foot 8 inches or 1.730 metres, and then walk back under it.

He was within a yard of 100 yards in 10 seconds, which isn't bad for a cow paddock performance! He also captained the Hazelwood Football Team when they could clean up the Morwell team with ease.

When the 1914-1918 war began, there were two sets of four brothers enlisted in the Australian army. Only one set came back intact- the four Shaw brothers- Arch, Don, Alec and Charlie. The years of such a war must have been a drain on their mental and physical condition. However Charlie enlisted in the Second World War and rose to the rank of Major.

After the Second World War, Charlie and his wife Flo and family operated "Otterburn" until moving to Catani in the 1940's. Charlie had also operated the brickworks in Morwell, after the First World War.

Don and Alec selected their soldier settlement allotments of 50 fertile acres, adjacent to each other on the north side of Billy's Creek.

They dug down with shovels to find out which ones had the deepest soil, and although they had the most trees to clear, Lots 12 and 13 were chosen with a view to future generations.

During the Depression Years that followed, every second farm went out of business, and so was divided up. That meant that 25 acres could be added to each alternate farm bringing them up to 75 acres each.

The terrible farm prices received during the Depression Years of the 30's, must have put all involved to the test- men, women and children.

Don married Ciss (Williams) in the early 1920's and they reared three daughters- Eva (Mrs. Fred Warwick), Lavinia (Mrs.

Norm Wolfenden) and Avis (Mrs. R.J. 'Bob the Builder' Lowe). Don and Ciss and their family worked their farm into a clean and tidy prosperous property, one of the best on the flats.

The flower garden was a match for any other in the district. At the time of writing these memories, the eighty year old cypress plantations they planted back in the 1920's, are being milled for timber, their life span being exhausted and also the first signs of white ants. The timber is excellent.

By 1948, Lavinia and Avis had married and moved to Melbourne and Morwell respectively, so Eva and her husband Fred Warwick and their three children-Donald, Eva and Avril, moved in to operate the farm.

They did so for sixteen years, seeing off the last of the horses and seeing in the first of the grey Fergie tractors, until the property was purchased by Alec and Ann Shaw in the mid sixties.

Alec Senior married Dot Silcock in 1924 and they had four children- Francis (Frank), Jean (Mrs. John Cusack) Margaret (Mrs. G. Kelly), and Alec who with wife Ann (Boag), still runs Lots 12 and 13 Walsh's Rd. The Silcock Family had a selection on the north east side of Switchback Rd., known as 'The Willows'.

The homestead site is presently marked by the weatherboard house built by Jack Silcock in the 1940's, located down Birch Drive, 200 metres to the west.

Worthy of note is that Charles, the father of Jack, Frank, Mag (Mrs. Tom Walsh) Dot (Mrs A. Shaw) and son Charles, was the first regular train driver on the Gippsland line.

Also of note are the fond memories Dot had of the time that John Flynn of the Inland was her favourite teacher, at Hazelwood South State School. Alec was the first president of the Morwell R.S.L., (another first for the Shaw family!).

Alec was a strong advocate of competition between milk factories, having a hand in inviting the Moe Co-Operative Dairying Company to begin a pick up in the Yinnar district.

He served as a director of that company for several years in the late 1940's and early 50's Alec held a prominent place on many local committees- Hall, School etc. and seemed to always be the speaker at the farewells to local boys and girls leaving the district for the war.

These evenings were held in the Flats Hall in Frasers Road. Two cypress trees mark the spot, 250 metres from the crossroads. One thing he did struggle with though was changing from horses to the mechanical age.

A tough example came when in the first week of having a go on the new Grey Fergie, he drove up to the gate by the horse paddock and yelled out "WOOOOOAAAAAH". Of course the Grey Fergie just kept going and ironed out the gate.

To make matters worse, Alec's sixteen year old son was on the sledge behind him bursting at the seams with laughter!

The eldest Shaw son Francis (Frank), was introduced to heavier than air flight at an early age when Charles Kingsford Smith took him up for a flight in the 1930s, thus cementing his desire to fly. He joined the R.A.A.F. in W.W.2, flying with Beaufort Bombers. After the war, he gained his pilot's license and was a foundation member of the Latrobe Valley Aero Club.

Crop dusting soon replaced building as a livelihood, and he moved north to Albury, Kyneton, then finally Leongatha. In 1989 he was national president of Aerial Agriculture Association of Australia (A.A.A.A.). Over the years there have been various aircraft drop into the top paddock in Walsh's Road, from Tiger Moths, to one Christmas, a fairly large Fletcher, with family aboard!

The present Alec Shaw was born in 1936 and went to school at Hazelwood Estate school up to the eighth grade. Then he went to St. Patrick's Boarding School in Sale to do his Proficiency and Intermediate.

At age sixteen he left school and returned to the farm to do various farm jobs, as well as cutting pulp with an axe, before chain-



saws came in.

The pulp was carted by Ray Cleary, to the Pulp Mill. When the cows had been dried off and not being milked, Alec engaged in cabinet making.

The mid 1950s began four very difficult years with serious back accidents and ill health, which limited the amount of work Alec could do. It was at this time that his Dad Alec was also very ill, and could not help out.

Alec Senior died in 1959. The debts mounted, and advice to sell the property, was freely given. But Alec and Ann were made of stern stuff and toughed it out. As Alec said "You just grit your teeth and keep going. It is all a matter of choices!"

So, in Winter, Alec milked the cows at 4:00 a.m., and then went to work at the Gippsland Institute of Advanced Education (G.I.A.E.), now Monash University, as a carpenter. This he did for five years, enabling the property to be paid off in the late 1970s.

Alec has also followed the family tradition of sports involvement. Ann describes him as "a great sportsman" having played football for Yallourn and later Yinnar. He has also played tennis, badminton and squash. Hard work never phased Alec.

He built the first Herringbone Milking shed in the Yinnar district, mainly because of this back problems. Ann also describes Alec as a Jack of all trades, to which Alec adds and Master of none. His skills include building and welding as these are skills demanded of farming today.

Alec married Ann Boag in November 1962. Ann was born in Yallourn and grew up there, attending the Primary, then High School, before going off to Melbourne to study Nursing at Sacred Heart Hospital in Moreland near Coburg.

On completion of her training, Ann returned to Yallourn and soon married Alec, coming to live on the farm on Walsh's Rd., where Alec was born and has lived all his life! Here they reared six children.

Terry lives on the farm opposite. Mike, Sally, Mary (Lucas), and Peter live in Churchill. (I think it is a wonderful coincidence that Mary Shaw married Graham Lucas of Shaw St. in Churchill!) Pauline is a Chef. Terry will keep the Alec Shaw name alive, having named his eldest son Alec. Altogether they have eleven grandchildren.

Alec and Ann are very involved with their church of Lumen Christie as well as their family, and of course the farm. Recently they changed from dairying to beef so that has eased the work load. Many healthy calves now grace their grassy paddocks.

They are what I would like to term true blue Aussie folks who are proud of their family, past and present, and their heritage. It has been lovely to learn about their story and to share their warm hospitality around the kitchen table on my various visits.

Next month Alec talks more about farming in the 1940s and 1950s.

Churchill & District News

Readership Survey

The Committee of the Churchill & District News would like to know how you feel about your paper. We would be grateful if you would take the time to fill in the questionnaire and mail it to us at PO Box 234, Churchill, or put it into one of our drop off boxes.

1. How long have you received the newspaper since November 2002 (please circle)

1-3 issues 4-10 issues 11+ issues

2. Do you read: (please circle)

- a. All or almost all articles b. Skim through and read a few articles
c. Glance at the headlines and illustrations

3. Please indicate what you think about the following: (please tick)

Excellent Good Average

- a. Design and Layout
b. Illustrations
c. Writing Style
d. Relevance of topics
e. Articles are easy to read
f. Variety of articles

4. What topic/s do you like best (please circle)

All
Sports
Schools
Youth Yard
Church Page
Competitions
Childrens
Articles about local community groups
Gardening
Astronomy
Looking Back
Health Tips

Other - Please State:

5. What extra topics would you like to see included in the paper?

6. What if anything would you like to see change about the paper?

7. Have you any questions or comments?

8. What is your age group?

Under 18
18 – 24
25 – 34
35 – 49
50 – 64
65+

9. Have you or would you consider writing articles for the paper?

10. Would you consider volunteering to help produce the paper?

Name (Optional)

Telephone (Optional)

Hazelwood Rotary

Busy Start To The Year

By Mike Answerth

IT has been a busier than usual start to the year for the Hazelwood Rotary Club due to the Tsunami disaster and the arrival of the Group Study Exchange Team from Scotland.

Following the tragic events of Boxing Day in South East Asia, the Club decided that the most practical way in which we could help was to raise money for the purchase of Rotary Shelter boxes.

These provide emergency shelter and life supporting equipment to help those affected by the disaster to survive until more substantial assistance can be provided by Aid agencies.

Hazelwood Rotary Club had previously purchased several Shelter boxes, which cost \$1100 each, in the organization's warehouse in the UK, for dispatch to disaster areas.

When the Tsunami event occurred, the Club in conjunction with Mid Valley, decided to set up a shelter box at Mid Valley and try and raise sufficient donations to purchase at least three or four more boxes for dispatch to India, Sri Lanka and Thailand.

With the support of the management and shopkeepers at Mid Valley, Hazelwood Rotary maintained a presence in the Centre for two weeks and raised over \$5,000 for the purchase of shelter boxes.

Meanwhile, club members also gathered household goods and clothes for a container to be dispatch directly to Sri Lanka through a local family.

Members also assisted the Traralgon Rotary Clubs and Lions in the prepara-

tion and staging of the Tsunami Concert at Traralgon, which is believed to have raised over \$7,000.

Over the past two weeks a Rotary Group Study Exchange Group from District 1010, Aberdeenshire in Scotland has been visiting the district.

The party made up of a Rotary leader and five young professionals, are spending six weeks in Australia developing their vocational skills and visiting similar businesses and organizations as to those in which they work..

The Moe Rotary Club hosted the group for a week and Hazelwood Club members attended a joint dinner on Monday night at Moe to hear a presentation from the visitors and to meet them personally.

On Tuesday the group spent some time with the Hazelwood Club visiting Monash University and other areas in Churchill.

On Tuesday evening they were guests at a dinner provided by the Club at the home of Rotarian Kay Radford and her husband Tony.

Planning for the Centenary House Project at the Cancer Centre, Latrobe Regional Hospital, is continuing and expressions of interest from builders have been advertised.

A public fund raising campaign will commence shortly as additional funds will be required as work on the project continues.

The year 2005 promises to be a very challenging year for the Hazelwood Club and we look forward to a great Centenary Year of Rotary.

INDIA – A Very Special Place

By WENDY BROWN

ON this visit, the aim was to get off the beaten track and into the real India.

Of course the obligatory visit, fighting your way through the crowds to the Taj Mahal at Agra was a must.

This building, built by Shah Jahan, after the death of his wife is the ultimate declaration of love. To me, it is the most beautiful and perfect piece of architecture in the world, and a must-see. After three visits, (25 years ago, and twice last month) it still leaves me gasping in wonder!

In my five weeks, I travelled to many diverse areas, staying at refurbished palaces, government guesthouses, basic hotels and forts, most with intermittent electricity, no hot water, squat toilets and basic food.

An unforgettable stay was at Fort Madhogarh, with a sunrise breakfast of bananas and coffee on the turret.

One of the many villages not on the map we visited in the state of Madhya Pradesh was Chanderi, a remote village, 90 km. south of Jhansi, which is on the mail rail line.

It took three and a half hours to cover the distance by jeep over unbelievably rough roads. Understandably, right off the normal tourist route.

We were accommodated at the only guest house in town, no hot water and electricity occasionally, then introduced to village life by our host, the village head man, Kalle Bhai (Black Friend).

He invited us to his home for dinner, a simple but delicious meal of vegetable and cashew curry, biriyani rice and chapattis, all prepared by his wife.

As with many remote areas of India, the whole town was vegetarian, no access to meat or eggs.

We played cricket with the kids (even in a remote village such as this they know of "Ricke Ponting"!), then climbed up the hill behind the town to the Koshak Mahal, an old tenth Century crumbling fort.

We were even invited to visit the Jain Temple during prayer time. In this village, Hindus and Moslems live in harmony and even intermarry! Kalle Bhai is a Moslem.

Next day we had a picnic lunch under a tree out of town, joined by curious tribal women, children, cows and dogs. A big hit was our digital cameras, with women and children clamouring to look at themselves, and our pictures.

Then back in the jeeps for a bone-jarring, bum-bruising 2 hours over sparse rocky terrain to a special place.

A couple of years ago, Kalle Bhai and his mates had discovered some unusual rock paintings in an overhanging cave down by the river. Another half an hour trek over rocks took us to the spot.

We were the only Westerners to have seen them, apart from archaeologists, who have dated the paintings as 40,000 years old!!

We also visited a remote school, 50 children, one teacher, and lessons done on the back of old cardboard boxes. We bought them 50 exercise books and 50 ballpoints, and they very proudly sang us a song, and counted to 10 in English.

We had many other wonderful experiences, but this special place really stands out in my mind!

****CHILDREN'S CORNER****

LIONS BIRTHDAY CLUB

Proudly sponsored by the
Lions Club of Churchill & District Inc.

Hi Kids,

If you are under 12 years old you can join the club. Ask your Mum, Dad, Guardian or Carer to ring the Editor of the CHURCHILL AND DISTRICT NEWS on 5122 2589 or write to

LIONS BIRTHDAY CLUB
PO BOX 110
CHURCHILL 3842



with your NAME, ADDRESS, PHONE NUMBER, BIRTHDATE, and whether BOY or GIRL

The randomly chosen "BIRTHDAYITES" for December were
DYLAN LAMONT and JAMIE ROWLEY.

BIRTHDAYITES

JANUARY 2005

Josiah BERTOLI 11 years
Samantha BLANCH 10 years
Alisha BRIGGS 2 years
Brianna BRIGGS 4 years
Jordan CURTIS 6 years
Breanna DOWNES SMITH 10 years
Jodie HAMMETT 12 years
Ashlee KEARNS 10 years
Shenae McLURE 5 years
Zac Talarico 1 year

FEBRUARY 2005

Luke BERTOLI 6 years
Hayley BEYER 8 years
Sam FLANIGAN 8 years
Corey KOOTSTRA-DENTON
Paige ROWLEY 8 years
Ashlee SMITH 11 years
Toby THAIN 5 years
Madeleine TURPIN 8 years

The "BIRTHDAYITES" for January are

JOSIAH BERTOLI and JODIE HAMMETT.

The "BIRTHDAYITES" for February are

COREY KOOTSTRA-DENTON and MADELEINE TURPIN.

Congratulations, you have each won a \$15 voucher for Churchill Newsagency. We will be contacting you soon.

John Barker

Publicity.

Birthdayites!



Dylan Lamont
(right),
12 years on 24th
December 2004

Jamie Rowley (left),
12 years on 22nd
December 2004



THE December "Birthdayites" were all smiles as they were each presented with \$15 vouchers for Churchill Newsagency by John Barker from the Lions Club of Churchill & District.

They were chosen at random

from the December list. This could have been you - make sure you join so you also have the chance to be a lucky "Birthdayite".

Remember you now have two chances of being chosen.

WORD PUZZLE

PLANETS

Word List

- | | |
|---------|--------|
| Earth | Planet |
| Jupiter | Pluto |
| Mars | Saturn |
| Mercury | Sun |
| Moon | Uranus |
| Neptune | Venus |

Hi, with going back to school we at the paper thought a word puzzle of our planets may help some students in science this year. Good Luck!!

A	X	Q	I	E	C	E	W	P	F	J	W
R	E	W	A	F	N	G	M	L	S	U	N
T	E	R	J	U	N	P	Y	A	V	A	A
B	T	T	T	U	H	E	R	N	E	B	V
H	T	P	I	E	I	S	U	E	K	P	C
L	E	U	K	P	E	Q	C	T	S	H	T
N	Q	B	R	H	U	X	K	U	K	E	I
R	E	S	I	A	A	J	E	H	A	P	N
S	A	T	U	R	N	A	M	J	M	O	F
H	Q	Q	J	N	E	U	I	W	O	C	D
O	T	U	L	P	E	B	S	M	R	Q	Q
P	N	F	Y	R	N	V	N	F	R	R	E



Hippo Sandwich

If you're feeling rather hungry and you really need to eat, you should try a hippo sandwich; it's a satisfying treat.

To prepare a hippo sandwich with a minimum of fuss get a loaf of bread, a pickle and a hippopotamus.

If you do not like the flavor, don't be worried, don't be flustered, just add hippopotamayonnaise and hippopotamustard.

—Kenn Nesbitt



Christmas Colouring Competition Winners!



Winner of Christmas Colouring Competition Santa: Courtney Vella



Winner of Christmas Colouring Competition Crib Scene: Emma Gunn



Runner Up of Christmas Colouring Competition Santa: Chloe Medew



Runner Up of Christmas Colouring Competition Crib Scene: Jaryd Smith-Downes



THE WINNERS OF THE CHRISTMAS COLOURING COMPETITION WERE:
SANTA
FIRST: COURTNEY VELLA
RUNNER UP: CHLOE MEDEW
CRIB SCENE
FIRST: EMMA GUNN
RUNNER UP: JARYD SMITH-DOWNES

The Dentist Pulled My Tooth Out

The dentist pulled my tooth out and he thought it was such fun he grabbed his pliers and dental pryers and pulled another one.

a cheerful cry Of "Eight! Nine! Ten! Eleven!"

"Yippee! Hooray! What awesome fun!" he shouted out with glee. He grinned a grin then went back in and pulled out number three.

He took a few more from the top and some from underneath, he yanked them fast until at last he'd pulled out all my teeth.

Then number four and number five and numbers six and seven were followed by

Without my teeth I cannot chew; I just eat soup and mush. But don't be sad I'm kind of glad— I'll never have to brush! —Kenn Nesbitt

Pictures to Colour

Below there is a picture of a Gargoyle and a Fairy for you to colour. Can you make up a story about them?

Shelley Sellers

Shelley Sellers sells her shells at Shelley's Seashell Cellars. She sells shells (and she sure sells!) to smelly seashore dwellers.

Smelly dwellers shop the sales at Shelley's seashell store. Salty sailors stop their ships for seashells by the shore.

Shelley's shop, a shabby shack, so sandy, salty, smelly, still sells shells despite the smells; a swell shell shop for Shelley. —Kenn Nesbitt



Term 1

Churchill Neighbourhood Centre

TERM 1 programs have now been delivered to letterboxes throughout Churchill and classes commenced this week. However, it's still not too late to enrol!

Two craft classes – 'Bark Pictures', 'Leadlight' and 'Stumpwork Embroidery' will only proceed if there are a minimum of 6 students enrolled, so please contact the Centre if you're interested in attending. Likewise, a weekend workshop, 'Polymer Clay Sculpture' will be arranged if enough interest is shown.

Computer classes – Basic Skills, Microsoft Excel, Microsoft Access and On-Line Learning for Adults are on offer this term, with further classes, such as Internet Use and Web Page Design, able to be offered if enough people contact the Centre to indicate their interest and availability to attend.

All classes and courses must be paid for prior to commencement. Enrolment

will be confirmed on full payment of the course fee. Please speak to the Co-ordinator, Christine Penpraze, if you would like to arrange an alternative means of payment.

The Centre is always interested in expanding the range of classes offered, so if you have a particular skill or talent that you are able to teach or tutor in a friendly class environment, please contact the Co-ordinator. The Centre also needs volunteers to make a positive contribution to the Centre's operations, so if you're interested, become a member. The Centre would welcome your input.

Churchill Neighbourhood Centre is located at the Churchill Monash Leisure Centre, Cnr Northways Rd and McDonald Way. Office Hours are 9am-3.30pm, Monday to Thursday. Phone 5122 2955 or email Churchill@lance.aunz.org

What's Happening at arc Yinnar

'New Beginnings' is our next exciting exhibition. This is an open theme event with an 'Open Stage' night to follow on afterwards.

Enter a piece that inspires you to a 'New Beginning'. It may be of a spiritual nature, or relationship, a new technique or medium, a new look at yourself or something in your life. Our huge gallery has potential for large works to be hung.

All of this will take place on 19 February, commencing at 7.30pm with the opening of 'New Beginnings' in our gallery.

The 'Open Stage' will follow with Alex Sykes kicking the night off in the Switchroom. Our music nights are quite fun to attend as we have a wide variety of people perform for us. Bring your guitar, banjo or sax. Drag out your best singing voice to sing

along with others enjoying themselves.

The exhibition will continue until 1st March.

We will be holding our annual Women's Show on 4 March. More information on this event to come later.

Classes are commencing for Pottery on Tuesdays from 10.00am.

For further information about anything you may wish to know about arc, please call 5163 1310 during our office hours of 12 – 4pm, Monday to Friday.



The Switchroom at arc

Water Fun And Easter Egg Hunts

All those attending were fed with sausages in bread, watermelon, cordial and icy poles. Many thanks to the adult cooks and helpers for their assistance on the day!

It was lots of fun for all concerned, and we hope that the children attending went home with a new drink bottle (for those hot days at school) and an extra icy pole or two.

Latrobe City Council, under its Community Grants Program, has funded GRG to conduct further children's activities in Glendonald Park during the year. Our next activity is likely to be held in early March, to coincide with Clean Up Australia Day.

An Egg Hunt is also planned for Easter Sunday.

GRG meets next at 7.00pm on Tuesday 22 February, in Glendonald Kindergarten. All residents of Glendonald are welcome and childcare is provided. We would love to hear your suggestions and ideas for organizing future fun activities in our Park.



By David Guthrie, President

TO 'celebrate' the end of the summer school holidays, GRG held a Water Fun Activity on Australia Day in Glendonald Park. The weather was hot, so the water play was very suitable!

About 70 children were given 'squeezeable' plastic drink bottles, which a team of adults kept filling with water, whilst the kids squirted and drenched each other.

There were many laughing wet faces, including Mums and Dads.

A highlight was the water relay race, in which teams had to fill an empty bucket with a single cup from a full bucket 50 metres away.

The winning team posed for a photograph and were rewarded with bags of chips.

To minimize the risk of sunburn, the activities did not start until 5pm, but tea was provided so parents weren't faced with late dinners the night before school started back!

Oxfam Tsunami Response

Where will the money go?

THE overwhelming public response to the Earthquake Tsunami Appeal has allowed us to minimize our need to spend money on advertising our appeal.

We are planning to spend more than 90% of funds raised to directly support communities that were devastated by the tsunami.

How is Oxfam helping those affected? We are now working with local communities and their organizations to provide food, clean water and shelter. We are ensuring that the needs of the most vulnerable are met, especially women and children.

Where possible, our field officers support local communities by hiring local staff and sourcing emergency supplies locally. In addition to this, Oxfam is also deploying Humanitarian Emergency Specialists, including health specialists, to Sri Lanka, Indonesia and India.

How will my donation help?

\$15 can buy a hygiene kit containing basic sanitation items, helping to prevent the spread of disease and further loss of life.

\$60 can provide enough basic food supplies to feed a family for a month

\$200 can buy water filters for ten families, providing access to clean, safe water.

\$1,000 can buy fifteen emergency shelter kits, providing cooking utensils and temporary housing for people displaced by the disaster.

Which countries is Oxfam working in?

Our focus is on Indonesia, Sri Lanka and India; the countries which were worst affected by the tsunami. We also have partner organizations conducting long-term development work in Sri Lanka and India who are well equipped to respond immediately to local needs. Oxfam International is working in other affected areas including Thailand, the Maldives and the Andaman and Nicobar Islands.

How long will the crisis last?

There are likely to be three components of response to the Earthquake Tsunami crisis

First, there is an immediate need to clean up, to treat the injured and to identify and bury the victims.

Second, Oxfam is responding to people's survival needs by providing access to food, water, basic health care and shelter and working with communities to prevent the spread of disease.

Finally and critically, we are working with the devastated communities to ensure their long-term recovery and economic survival.

While the current focus is on delivering emergency aid to affected areas, Oxfam is committed to working with communities in the region for years to come and to help them to rebuild their communities and livelihood.

80th Birthday Celebration for Bob Mildenhall

BOB Mildenhall celebrated his 80th Birthday on Sunday 5 December.

After attending a church service at Hazelwood North family and friends enjoyed a barbecue lunch in the

Jeeralang North Hall.

An Open Afternoon followed when more friends joined in the celebrations.

Congratulations Bob!



Bob's 80th Birthday at Jeeralang North Hall

Pictured left: The Mildenhall Family: back row L - R Neil, Rose and Howard. Front row Wendy, Bob, Zelma and Alison.

JOIN YOUR LOCAL CLUB TODAY!



THREE membership packages are available from the Churchill Football Netball Club: Gold, General and Social.

Prices are

\$100 to become a Gold Member which includes entry to all home games, \$500 cash draw, regular voucher and cash draws, function room hire discount and discount drinks,

\$30 for General Membership which includes regular voucher and cash draws, function room hire discount and discount drinks, and

\$20 gets a Social Membership which includes discount drinks.

Application forms are available from the club or by calling 0413 337 776

Membership renewal invoices have been sent out to all of last years members. If you didn't receive yours, please contact Stacey on 0413 337 776. If you did, please renew ASAP.

As well as a membership card and the fabulous benefits already mentioned, all 2005 members will be receiving a Churchill Football Netball Club Membership key tag which includes the season draw on the back.

Membership targets for 2005

In 2004 we had;

108 General/Gold Members – this year our target is 200

24 Social Members – this year our target is 100

To assist in reaching these targets, existing members will receive a \$10 drink voucher for every NEW Gold Member they sign up and a \$5 drink voucher for every NEW General Member.

What a great incentive to assist the club in meeting their membership targets!

Also, don't forget to check out club news and events on the web at www.cfnc.vcfl.com.au

New Coach Swoops In

By BRADLEY MCCARTNEY

AFTER three successful seasons, two of which netted back to back premierships, Jason Sherriff has been replaced as Senior Coach at Churchill Football and Netball Club by Grantley Switzer.

Grantley has returned to the club following a season's absence. He played a large role in the Club's back to back premierships. Jason Sherriff has taken the Assistant Coach's Role.

Graeme Whykes has returned as Reserves Coach taking over from Daryl Couling who has decided not to coach the reserves in 2005 due to work commitments. Rob Jenkins will again take charge of the Thirds.

Training began on Monday 24 January with half of the squad in attendance. Training will take place on Monday, Wednesday and Fridays commencing at 6.00pm sharp until further notice. All past, current and future players are invited to attend training.

CHURCHILL'S HIDDEN ASSET

By BRADLEY MCCARTNEY

OVER the last 12 months Churchill Monash Golf Club has seen some major improvements to its course. A new larger putting green has been installed along with a large shed to store all the maintenance equipment. There have also been garden beds constructed to compliment the putting green and the outdoor seated area. Upon completion of the practice nets which are currently being erected, the course will offer all facilities that other local courses offer.

With the extensive renovations the Clubhouse has received along with the immaculate condition of the course the new improvements have brought the reputation of the course to a new, exciting level. The Club has recently signed up its 200th member of which 40 are ladies and 20 are juniors/students. With annual fees at \$130 plus \$22 joining fee and green fees at \$7 for nine holes and \$10 for eighteen holes, it is a concern that locals choose to travel to other courses.

The Club has a Chocolate Run operating on Friday nights together with the Chicken Run on Wednesdays, ladies competition on Tuesdays, Men's Competition on Saturdays and open competition on Sundays.

For a small club like Churchill to survive it is important to have numerous volunteers along with a strong working relationship with the Monash University. The University maintains the Fairways and the Roughs whilst Club volunteers maintain the greens, tees and the clubhouse. Bill Peters, Chris Waterman, Dick Cheesum, Ken Garlick and newest member Greg Britton are some of the hard workers that enable the club to continue operating successfully. Without the endless amount of time, effort and support that the Members put in on a voluntary basis the Club would not be in a position to hold its head up high and be proud of the changes and improvements that the Clubhouse and Course has undertaken recently.

So next time you feel like having a casual or competitive game of golf, make sure Churchill Golf Course is the course of choice. Come down and see the improvements and enjoy the condition of the course and the friendly atmosphere and ask yourself why it took so long to enjoy one of our local assets.

Pictured Left: Churchill Monash Golf Club Clubhouse



Yinnar Bowls

CONGRATULATIONS to Evan Williams on winning the club singles championship, winning runner up in the Mid Gippsland singles championship and having a hand in winning the interclub fours with Graham Ritchie, Geoff Whitelaw and Ron Morrison.

Twilight Bowls will take place on February 23rd. The cost will be \$5.00 per adult and \$2 per child under 14 for two hours of bowling and a barbeque with salad at the conclusion.

On March 3rd there will be Twilight Bowls for Palliative Care at a cost of just \$6 for a game of bowls and a barbeque.

All proceeds will go to Palliative Care so come along, have some fun and give a little to help someone else.

The next Yinnar Skins will take place on 6th March, costing only \$5 for day. It will start at one o'clock and it is a good afternoon out.

Good Bowling
Geoff Marshall

Sunday Mens Comp: Stableford. 23/01/05. CCR: 68.

Winner: P Williams (13) 42 pts. DTL: G Down (21) 38, B Murphy (28) 38, D Taylor (20) 36 c/b. NTP: 5th G Down, 12th T Sterrick, 14th B Croft.

Sunday Ladies Comp: Stableford. 23/01/05. CCR: 70.

Winner: J Busch (29) 40 pts. DTL: J Blizzard (27) 35 c/b. NTP: 3rd M McConville, 5th P Bainbridge (T'GON) 14th J Maher.

Tuesday Ladies Comp: Stableford. 25/01/05 CCR: 70.

Winner: L Olliquist (41) 48 pts. DTL: S Jeffery (33) 43, J Leslie (22) 40, S Cooke (45) 39. NTP: 3/12 0-32 - 33-45 S Jeffery. Birdies: Di Scurlock 14th. Lost Handicap: L Olliquist 41-34, S Jeffery 33-30, J Leslie 22-21, S Cooke 45-44.

Winners: D Thomas (28), M Mitchell (38), C Gardam (32). DTL: J

Blizzard (27), S Jeffery (33), M McDonald (39). NTP: 3/12 (0-32) L Jessop, (33-34) S Cooke. 5/14 (0-32) E D'Alterio, (33-45) L Casey. Birdies: L Jessop 3rd, E D'Alterio 5th.

Saturday Mens Comp: Stroke Medal. 22/01/05. CCR: 68.

Scratch: P Williams 75. A-Grade & Medal: (0-17) P Williams (15) 60. B-Grade: (18-22) M Bianconi (22) 68 c/b. C-Grade: (23-32) B Barnes (27) 63. DTL: V Monument 65, R Welsh 68, G Fraser 69, G Morrison 70, F Bianconi 70, D Williams 69. NTP: 3rd S McNamara, 5th D McCafferty, 12th P Williams, 14th V Monument. Encourage Award: R Welsh. Putts: D Williams 27.

Golf Results - continued from page 18

Saturday Mens Comp: Captains Revenge. 15/01/05. CCR: 69.

A-Grade: (0-15) P Ludlow (13) 67. B-Grade (16-21) P Coad (16) 65. C-Grade (22-32) B Barnes (27) 69. DTL: J McCafferty 66, B Peter 68, A Casey 69, P Kearns 70 c/b, C Lesiw 69. NTP: 3rd G Miller, 5th C Speekenbrink, 12th C Lesiw, 14th P Ludlow. Birdies: G Miller 3rd, D Taylor 5th. Straightest Drive: (9th) I Wilson. Longest Drive: (15th) D Williams. Putts P Kearns 24. NAGA: E Winter 88.

Sunday Ladies Comp: Stableford. 16/01/05.

Winner: M Mitchell (40) 40 pts. DTL: J White 39 pts. NTP: 3th J White, 5th M Fletcher.

Tuesday Ladies Comp: 3BBB Stroke. 18/01/05.

STRUT RE-GAS
Tel: (03) 5166 1665 Mob: 0407 542 122

"The Strut Specialist"



- New Struts available including Stainless Steel
- Automotive applications: cars, 4wd, trucks, buses & tractors.
- Office/Medical Equipment: chairs, photocopiers etc.
- Boats, Trailers & Industrial uses.

Struts are not throw away items.

They can be RE-GASED!

SULTY'S
Fencing & Renovations



10% OFF
RESKIN TIMBER FENCES
IN FEBRUARY

Steel Decorative Fencing
Timber Fencing
Colourbond Fencing
Decking
Pergolas
Retaining Walls
Renovations

No Job Too Big
No Job Too Small

Obligation Free Quotes
Contact Adam

0418 366 534 (03) 5122 3347 AH

Come and Play
Volleyball

Latrobe Valley Volleyball Inc.

Moe Competition
Tuesday
Juniors & Seniors
6.50—9.00


Contact **Ray Woolley**
5127 6163

Norwell Competition
Wednesday
Juniors 5.30—6.45
Seniors 6.50—9.00

Contact **Ian Burgess**
5124 3308

Churchill Competition
Thursday
Juniors & Seniors
7.00—9.30

Contact **Barron Flanigan**
5124 3391



Each competition can cater for teams of Men, Women or Mixed, adults and juniors.


Why not get together with your friends, school or work colleagues to form a team?

Individuals are welcome & can be connected with a current team.


Give us a call NOW!

You can 'come & try' anytime.

Regular competitions start in February and July.



Latrobe Valley Volleyball Inc.
P.O. Box 308
MORWELL VIC 3840
Contact 5124 2641



ACTIVE AUSTRALIA
Provider



OUR HIGHLY TRAINED STAFF WITH 45 YEARS COMBINED SHOPFITTING/GLAZING EXPERIENCE



JUST GIVE US 1% OF YOUR BUSINESS AND WE WILL EARN THE REST!

Quote of the Month
The Philosophy of one century is the common sense of the next.
Henry Ward Beecher (1813 - 1887)

TRADING HOURS
Monday - Friday
7.30am - 5.00pm
Saturday
7.30am - 12.00pm

GUY & DEBBIE D'ALIA (OWNER OPERATORS)
543 Princes Drive, Morwell
Same Service Road as the Italian Australian Club (Next to Boltco)
PH: 5133 7000 FAX: 5133 8458
MOBILE: 0412 949 091 A/H: 5122 1377

Amazing FACT!
Albert Einstein was offered the presidency of Israel in 1952, but he declined.

JOB OF THE MONTH
New Trafalgar Bakery



Pictured above is the old Commonwealth Bank in Trafalgar. It is going to be a bakery! We replaced the brick wall with two large, clear windows. They are both laminated safety glass and offer a great shop display for potential customers walking by, while allowing plenty of light in.

Product Of The Month
Sliding Doors

Reliability, strength and a smooth rolling action are the important aspects of a sliding door.

Our adjustable, non-corrosive roller system ensures our doors slide smoothly now and for years to come.

Once again your peace of mind is also a consideration. That's why we offer the options of a key lockable latch or, for extra security, a deadlock. These can be supplied with the convenience of the same key for all your doors.

There have been few revolutionary break-throughs in the design of the sliding door since its inception but we offer the benefits of one such breakthrough.

The "6 panel patio" door has been developed to accept four consecutive sliding panels - enabling an uninterrupted opening of more than 3 and a half metres.

This creates an ultra modern, seamless junction between indoors and out. Perfect for entertaining.

For smaller rooms a three panel (2 sliding) configuration is available.



CALL: 51 33 7000
FOR MORE INFORMATION

SAVE

Gold and Wooden Framed Mirrors ALL 1/2 PRICE

Offer ends Feb 28th 2005

SAVE

SAVE

SAVE

CUSTOMER COMMENTS!

I would like to thank Guy, Debbie and staff for all their fantastic work throughout 2004.

Work was completed at 12 units in Wallace Street, 4 town houses in McLean Street and at many, many more jobs throughout the Valley.

Thanks for all your help, management and efficiency. It is greatly appreciated.

I have known Guy for many years, not only at work, but also in my free time and I think of him as one of my great friends.

I would highly recommend Guy and his staff to anyone.

Thanks again

Cosimo Prestipino (Owner/Manager Meca Enterprises)

HANDYMAN HINTS
Window Painting Tip

Wet newspaper strips can be used around windows when painting instead of masking tape. Remove strips before they dry out.

DEB'S NATURAL CLEANING TIPS

Stains on Carpet

Beer - Wash with a mixture of one tablespoon borax to three cups cold water.

Wine - Spray with soda water and let it dry, or cover with a thick layer of salt, allow to dry, then brush off the salt

NEXT MONTH
FRENCH DOORS

PERSPEX * ALUMINIUM * WINDOWS & DOORS * HEATER GLASS * MIRRORS

INSURANCE * WORK * SHOWERS * SCREENS * GLASS * SPLASH * BACKS * GLASS