

# CHURCHILL & DISTRICT NEWS

Est. 1966

Distributed Free

Daryl White - P 4



Open garden - P 5



Cemetery gates - P 8



LV Bus timetables Route 3&4 - P 14



## Churchill Tennis Club Come 'n' Try Day



This annual event was again very well attended, with 33 beginners of varying talents and 25 competition players registering to have a go or compete in a round robin competition. Competitors came from all around including Trafalgar, Glengarry and Leongatha

The event is jointly run by the Churchill Tennis Club and Churchill and District News. Latrobe City Council also contributed with a grant to offset some of the costs.

Tennis Victoria, and the Hot Shots programs helped by supplying medals, and other goods such as hats, pens and magnetic photo frames

as prizes. This meant that all participants left with something for their efforts.

The Churchill and District Lions Club was on hand to cook a sausage sizzle and provide drinks of juice to the hungry competitors.

Sally Kirstine, President of the Churchill Tennis Club and a tennis coach, organised the day's activities.

Sally is very proficient at doing this, which ensured the day ran smoothly. Backing Sally were members of the Tennis Club who acted as volunteers to score and do whatever else was needed. The day was organised into two

sections. From 9am-11.30am the beginners were able to play on small courts with equipment for their age group. Sally provided them with coaching skills as she circulated around, re-organising as children showed what they could do.

After the food was served the second section was a round robin for those children who are involved with tennis on a regular basis. They played in doubles and singles matches to determine winners and runners up.

At the conclusion of each section a presentation of prizes was made.

Throughout the day there were some special visitors.

Adam Feiner from Tennis Victoria spent some hours observing the proceedings, and being impressed by the children.

Latrobe City Council Mayor Ed Vermeulen was impressed by the number and enthusiasm of the participants.

Ward Councillor Darrell White was able to come and say a few words in appreciation of the event and its positive outcome encouraging children to play sport.

More pictures, Sport - page 29 . . .

Churchill & District News Proudly Supported By



DAINBRIDGE NICHOLSON FINANCIAL SERVICES

George Nicholson, B.Com,CA

Chartered Accountant,  
Tax Agent and Financial Planner

Phone: 5122 2033

Fax: 5122 2733

Email: kim.dainbridge@bigpond.com

# Churchill & District News

## Editorial

The Churchill and District News is a community newspaper staffed by volunteers.

The Team:  
 Team Leader/Secretary : Ruth Place.  
 Treasurer: Val Prokopiv

Editors: Bea Stallbom, Carol Scott.  
 Advertising: Ruth Place, Tracey Burr.  
 Layout: Allan Larkin.  
 Production: Tracey Burr, Carol Scott, Ruth Place, Val Prokopiv.

Webpage: Val Prokopiv  
 Proof Readers: Ruth Place, Olivia Jackson, Geraldine Larkin, Carol Scott.  
 Team Members: Peter Prokopiv, Wendy Brown, Charlie Rawlinson.

## Contributions

**The deadline for the submission of articles and advertisements for the May 2012 edition is April 30, 2012.**

Articles for publication and letters to the Editor can be sent to:  
 Churchill & District News  
 PO Box 234, Churchill, 3842  
 Or Email:  
**cdneditorial@aussiebb.com.au**  
 All articles must be submitted by the 30th of each month for publication in the middle of the following month.  
 Advertising enquiries can be addressed to:  
 Ruth or Allan  
 Churchill & District News

PO Box 234, Churchill, 3842  
 or Email:  
**cdnadvertising@aussiebb.com.au**  
 Tel: Ruth 03 5122 1961  
 or Allan 0427 372 517  
 Tracey 0422 823 179

**Articles can be left in our Drop Off Boxes**

Located at:

**Churchill Post Office,  
 Co-Operating Church, Williams Avenue**

### ADVERTISING RATES

Full Page:	\$290.00	26cm x 8.5cm	\$130.00	All
Colour:	\$515.00	11cm x 14.5cm	\$94.00	prices
Half Page:	\$245.00	11cm x 8.5cm:	\$52.00	include
Colour:	\$312.00	7cm x 6.5cm:	\$36.00	GST.
19cm x 14.8cm:	\$130.00	11cm x 4cm:	\$36.00	

**Webpage: [www.cdnews.com.au](http://www.cdnews.com.au)**



### Disclaimer

The Churchill and District News wishes to advise that the views or remarks expressed in this publication are not necessarily the views of the Editor or the Management Team and no endorsement of service is implied by the listing of advertisers, sponsors or contributors.

THE CHURCHILL & DISTRICT NEWS IS PRODUCED UNDER THE DIRECTION AND CONTROL OF THE CO-OPERATING CHURCHES OF CHURCHILL.  
 THE CO-OPERATION IS MADE UP OF THE ANGLICAN, UNITING AND CHURCHES OF CHRIST.

# Churchill & District News

## New Advertising Prices January 1, 2012

1. Full Page	\$290.00
Colour	\$515.00
2. Half Page	\$245.00
Colour	\$312.00
3. 4 Columns	\$130.00
19cm x 14.8cm	
4. 7 Columns	\$130.00
26cm x 8.5cm	
5. 3 Columns	\$94.00
11cm x 14.5cm	
6. 3 Columns	\$52.00
11cm x 8.5cm	
7. 2 Columns	\$36.00
7cm x 6.5cm	
8. 2 Columns	\$36.00
11cm x 4cm	

\* All prices include 10% GST

## Book Your Ad For 6 Months to Receive a 10% Discount

1. Full Page	\$260.00
Colour	\$464.00
2. Half Page	\$201.00
Colour	\$280.00
3. 4 Columns	\$117.00
19cm x 14.8cm	
4. 7 Columns	\$117.00
26cm x 8.5cm	
5. 3 Columns	\$85.00
11cm x 14.5cm	
6. 3 Columns	\$47.00
11cm x 8.5cm	
7. 2 Columns	\$32.00
7cm x 6.5cm	
8. 2 Columns	\$32.00
11cm x 4cm	

\* All prices include 10% GST

# ADVERTISING PAYS!!!!

To Book Your Ad please contact

Ruth Place  
 03 5122 1961

or

Tracey Burr  
 0422 823 179

or email: [cdnadvertising@aussiebb.com.au](mailto:cdnadvertising@aussiebb.com.au)

**The Churchill & District News reaches customers in Churchill, Yinnar, Yinnar South, Boolarra, Hazelwood North/South and Mirboo North at a price you want to pay**

## Students measure up to Latrobe City Energy in friendly match



International students at Monash University Gippsland have been given the chance to test their sporting skills against the region's elite basketball team – and what the students lacked in height was more than made up for with enthusiasm and excitement.

Bringing together leading players from the Latrobe City Energy basketball team, and international students from the Gippsland campus, the match was held as part of Inclusion and Diversity Week, a five-day program of events to highlight the importance of social inclusion throughout Monash University and the local community.

Following an hour of skill and drill sessions, the students were given the opportunity to test their talents on the court, coming face-to-face – or more precisely, face-to-mid-torso – with the Latrobe City Energy players themselves.

And with the Energy's star import for 2012 – the six-foot, nine-inch Russell Permenter – standing almost a foot higher than the tallest student from Monash, it was never going to be a game won on height alone.

"What our students lacked in height was more than made up for in their speed and enthusiasm," said event organiser and Monash Sport Program Co-ordinator, Shane Paynter.

"The match provided our students with the chance to play alongside some of Gippsland's best basketballers, as well as providing them with an opportunity to see a different perspective of life, sport and recreation in the region." President of the Monash University Gippsland International Students Association, Oscar Ri Hao Teng, said the match was well-received by his peers, many of whom had been keen basketball players at home, but weren't sure about how or where they could play in Australia.

"Although international students know that Australians love their sport, we don't often hear much more about sport in Australia other than football and cricket," said Mr Teng.

"Getting to see and play against a state-league team like the Latrobe City Energy has been a fantastic experience for international students at Monash University Gippsland, and one which is already being shared with their basketball-loving friends and family back home."

In the end, umpires declared the match a draw, awarding the students as many points for effort and enthusiasm as the Energy made through their numerous slam-dunks, field goals and three-pointers.

## Gippsland Family Carers Support Group

The Gippsland Family Carers Support Group has been established by carers for carers, and welcomes anyone providing unpaid care and support for a family member, friend or neighbour who has a mental illness, is frail aged, or who has a dependent physical or acquired disability.

The Group meets between 10am-12pm on the 4th Wednesday of the month at Carers Place, 185 Commercial Rd, Morwell. For information about the

next meeting, please ring the office,

Group meetings are relaxed and informal and are an opportunity for family carers to share and benefit from each other's experiences, take some time out from caring and access information and resources.

The office is open on Tuesdays, Wednesdays and Thursdays.

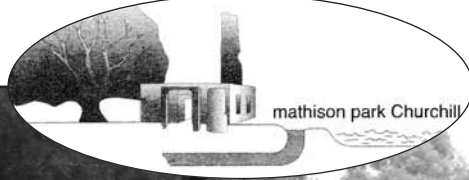
More information on the group is available from the Gippsland Carers Association 03 5133 3343.

## At The Hub - Plastic Chair

By Bev Thompson

Moulded Plastic Chair  
 You Stare  
 You're Armrests Ache To Give  
 Ease  
 To World Weary Travellers  
 Not Looking Back  
 Just Forward  
 You're Fanning Ribs  
 Support The Back  
 Slotted Grooves in Seat  
 Aerate Regenerate  
 A Vehicle Of Modern Repose

A BBQ Or A Wedding Reception  
 Are You The Deception  
 Man We Make You  
 Your Clever Form A Measure  
 Or Creative Endeavour  
 You're Not Of Air Fire Wood Or  
 Water  
 And Yet You Are  
 Just Juggle The Elements  
 VOILA  
 Moulded Plastic Chair  
 We Stare



# Mathison Park



With the grass growing so much this last year, it has been deemed necessary to engage someone to mow the grass regularly, including in and around the trees near Kurnai College.

We were lucky enough to discover someone who would willingly do that at a very good price.

The last working bee was thus spent clearing fallen branches and other debris from under the trees, just in time for the mowing.

The mowing job was well done and we are set now for a while.

Thank you to the five who were able to attend the working bee. So much was achieved in the morning. Having the chainsaw and now the pole saw made cutting easier and having a trailer and a ute for removing the branches, etc made the job very efficient.

The Mathison Park Advisory Committee would like to thank Latrobe City Council for the Community Grant which allowed it to purchase the pole saw and accessories.

Chris, our operator, has attended a course and is qualified in using these tools.

## Saint Vincent de Paul - Ozanam Lecture 2012



Latrobe Valley Group with Ozanam lecturer Janet Buhagiar (in front)

Members of St Vincent de Paul Conferences in Latrobe Valley attended the annual Ozanam Lecture held this year for the first time on a weekend.

This allowed country people more scope to attend. And attend they did!

The Latrobe Valley bus started at Traralgon (with the Sale, Maffra and Heyfield attendees), with stops at Morwell, Moe, Warragul and Drouin.

Drouin ladies had a beautiful lunch prepared and waiting for the bus' arrival. Then it was on to Knox Centre in East Melbourne for the lecture.

The Ozanam lecture was given by Janet Buhagiar on Social Equity. One person CAN make a difference.

Janet was originally from Melbourne before moving to the Northern Territory where she was CEO of Northern Territory St Vincent de Paul. She recently was appointed to the Department of Chief Minister as Director of Social Policy. She was also a member of Young Vinnies and worked on Kids' Camps and Kids' Day Out.

She spoke of the value of networking, taking ownership and empowering people to share in the equity of the human spirit by hearing, responding and taking action. The message is: People matter.

Latrobe Valley people had a great day and believe it was a great success.

## Old Time Family Dance Jeeralang North Hall Jeeralang North Road Friday 27 April

Dancing from  
8.00 pm to 11.30 pm  
Music: Ken & Alice

Admission: \$8.00  
Door Prize  
Supper supplied



For more details please ring Judy Mele 5166 1682

## Latrobe City

GUNYAH WARD



Cr Ed Vermuelen

For general assistance and information

**1300 367 700**

or

[www.latrobe.vic.gov.au](http://www.latrobe.vic.gov.au)

To contact Cr. Vermeulen for matters concerning Gunyah Ward

**0428 148 585**

or Email:

[ed.vermuelen@latrobe.vic.gov.au](mailto:ed.vermuelen@latrobe.vic.gov.au)



HEALTH CENTRE

## Bulk Billing

\*Family Medicine

\*Women's Health

\*Counselling

\*Minor Surgical Procedures

\*Pathology Service

\*Visiting Paediatrician

\*Visiting Physiotherapist

\*Visiting Surgeon

\*Visiting Psychologists

\*Industrial Medicals

\*Travel & Health Immunisations

Consulting Hours

Monday to Friday 8am - 5.30pm

Saturday 8am - 1.30pm

24 hour on call service

Tel: 5122 2555

9a Georgina Place, Churchill, 3842

"Caring Family Medicine"

## @advantage



*baby club*  
sign up day

Thursday  
26th April

8:30am-6:00pm

Come in and enjoy..

- free samples and giveaways
- a chance to win a baby hamper valued at \$300
- face painting
- professional baby photographer (bookings essential)
- guest appearance by elmo
- professional and expert advice
- sausage sizzle

@advantage PHARMACY

Advantage Pharmacy  
Churchill  
(03) 5122 1390

## Northe's Natter

I trust that all community members have had a very safe and relaxing Easter break, and managed to catch up with friends and family. With autumn already half way over, this year is certainly travelling fast and keeping everyone, myself included, very busy.

I again had the pleasure of visiting Churchill North Primary School last month, to congratulate school leaders, including school and house captains along with junior school councillors. I'd like to thank the teachers, staff and students from Churchill North for their exceptional community service and for the hospitality they demonstrate to guests and visitors such as me.

Another group that displays exceptional community service is the Churchill Scout Group which has received a grant of \$25,000 from the Victorian Government. Churchill Scouts will receive the

funding to remove an unsafe mezzanine area used as a venturer den, with a 1 bay extension to replace this. I had the opportunity to visit the facilities and have a chat with Peta and Michael about their plans, and I know they will put this funding to good use.

The Churchill Scouts do a marvellous job within our community, and it is fantastic that they will be able to upgrade their facilities. They provide an opportunity for our younger community members to be active and involved with others with similar interests, and also teaches many life skills such as leadership, cooperation and self-assurance.

Having these improved facilities will hopefully assist the Scouts immensely and attract more members and volunteers.

I thank Peta and Michael for taking the time to show me the

facilities and have a chat to me about their plans for the future. They, and all the other leaders do a fantastic job, and I commend them on their dedication and enthusiasm.

On the topic of dedication and enthusiasm, I'd also like to advise community members about the Gippsland and Cardinia Regional Diversity Awards 2012. This is a unique opportunity to celebrate and recognise excellence in a range of sectors and fields in diversity and inclusive practices in our region.

Gippsland Multicultural Services have instigated this award, as they see inclusive practice and diversity as being a core part of business, so the awards are open to anyone in the community who shows a commitment to embracing diversity.

For more information on categories or for a nomination form, email [lisa@gmsinfo.com.au](mailto:lisa@gmsinfo.com.au) (Please write "Nomination for Diversity

Award" in the subject heading), or phone 5133 7072. Nominations close 3:00pm, Friday April 27.

Also, nominations for the Latrobe City Business Tourism Awards' People's Choice Awards 2012 are closing on April 30, 2012, with finalists announced on May 4. These awards raise Latrobe City's tourism profile, recognise businesses that display excellence in customer service, and also develop community pride and awareness. For more information, visit <http://www.lcbta.org>.

I'd also like to remind those sportsmen and women in Churchill that the Elite Athlete Travel Grant Program is still open, until May 1, 2012. This program provides grants to elite Victorian athletes to travel to compete at national championships or international events. Athletes can receive up to \$2000 for travel.

For further information, visit



<http://www.dpcd.vic.gov.au> or call 5116 7300.

In closing, please remember that 25 April is ANZAC Day, and a number of services will be conducted around the Latrobe Valley. These services are always well attended, and I encourage you to go along to and pay tribute to those who have served our country and show your gratitude and respect to our courageous service men and women.

## Implementing the Churchill Town Centre Plan

The works at Philip Parade are finally nearing completion.

Landscaping works along Philip Parade were completed during March, as was the reconstruction of the truck access servicing Hazelwood Village Shopping Precinct. Tidying up of the areas around the Town Hall and along the new alignment of Georgina Place was carried out, prior to later works to construct plazas and footpaths.

Several additional tasks are scheduled for completion including laying of the asphalt overlay on Philip Parade, Georgina Place and the northern end of Marina Drive. This will be followed by linemarking, and switching on of the street lights along Georgina Place.

Philip Parade to Monash Gippsland Campus Master Plan

Unfortunately, I was not able to attend the CDCA General Meeting on March 28, part of which was focused on master planning for the area between Philip Parade and

Monash Gippsland Campus.

I am aware that there were about 20 enthusiastic contributors from the community in attendance at the meeting which was chaired by our Mayor, Cr Ed Vermeulen.

There were a number of key issues flagged at the meeting:

The central importance of improving access and the visual connection between the Town Centre and the Monash Gippsland Campus.

The nature and design of a new pedestrian bridge across Eel Hole Creek is a major issue.

The need to improve the environment of Eel Hole Creek.

The review of the proposed street and parking area between the CFA building and Eel Hole Creek.

The desire to encourage the development of the art and culture trail in this part of Churchill.

The need to consider planning for a number of structures proposed for the area, such as a Shelter at the Skate Park, the support of the Lions Club

for a replacement of the barbecue formerly located near Monash Way, and a heritage pavilion proposed to be part of the art and culture trail.

Consideration of the access arrangements and car parking at Latrobe Leisure Churchill.

Planning for an upgrade to landscaping, aiming for safety, aesthetic and environmental improvements.

Planning for improved linkages between the Synthetic Sports Field and the rest of the precinct.

I anticipate that there will be plenty of additional ideas raised over the next couple of months. These will all be considered when preparing the Master Plan, which will aim to establish a framework for long-term development of the area, and support submissions for funding.

Further background on the Master Plan and a link to a website established by CPG Consultants, who are carrying out the planning, can be found on the Latrobe City Council

website:

<http://www.latrobe.vic.gov.au/Projects/ChurchillTownCentrePlan/NextSteps/>

Would you like to teach English in Latrobe's Sister City, Takasago in Japan?

2013/2014 Takasago Assistant Language Teacher (ALT) Program

A unique and exciting opportunity exists for an individual looking for a challenge and adventure to assist with the teaching of English in schools in Takasago Japan (Latrobe's Sister City) for 12 months or more, commencing in April 2013.

Latrobe City Council is inviting applications from persons interested in entering into a contract with the Takasago City Board of Education to teach English to junior high school students in Japan for a period of 12 months or more. The Assistant Language Teacher (ALT) will assist with classes taught by Japanese teachers of English at junior high schools and participate in



kindergartens, elementary schools or other educational facilities with international exchange activities as specified under the terms and conditions of service. All travel, accommodation expenses and wages will be met by the City of Takasago.

Applications must be received by no later than 5pm on Thursday December 13, 2012. Enquiries may be made with Jie Liu on Telephone 1300 367 700 or email [jieli@latrobe.vic.gov.au](mailto:jieli@latrobe.vic.gov.au)

Full details are also available on Council's website: [www.latrobe.vic.gov.au](http://www.latrobe.vic.gov.au)

## CDCA - Slope of land hides Churchill features



By Margaret Guthrie  
The slope of the land between Eel Hole Creek and Northways Rd presents a problem for "seeing" some of Churchill's best features!

Linking the Town Centre to the facilities on the eastern side of Churchill requires more than just some new pedestrian pathways.

We need new 'views', 'entrances' and improved signage to provide 'visual connections' between the buildings and facilities on Philip Parade and Northways Rd.

This was some of the discussion that took place at the March CDCA 'Open Forum' meeting at Green Inc.

The first half of the evening's proceedings provided an opportunity to hear information about the brief for the 'East Link' concept plan for Churchill, and to put forward ideas for the project.

Local residents attending the forum identified a number of issues that could be addressed in the project plans:

The current Leisure Centre car park is not a pleasant recreational pathway and forms a not-so-beautiful focal point for the surrounding facilities.

The green space between the creek and the Leisure Centre is under-utilised and is hampered by its steep slope and lack of facilities and features.

The creek needs weed removal and general 'beautification'.

The bridge across the creek is hidden in a dip and neither the Hub nor the Leisure Centre can be seen from the eastern side of the creek, nor can you view one building from the other.

The lack of 'front doors' was also mentioned – the entrance to the Leisure Centre is not visible from either McDonald Way or Northways Rd; in fact, vehicle access is via the service road entry. Likewise, the University lacks a focal entrance point.

CPG is the company that has been engaged by Latrobe City to develop a Master Plan for Churchill's East Link – from the Town Centre to Monash University, linking the Hub, Skate Park, CFA, Student Residences, Leisure Centre, GEP and Synthetic Sports Field.

A representative of CPG attended, along with Council's Churchill Town Centre Place Manager, Ian Gibson.

Our meeting was the first opportunity for community consultation on this project. Further public consultation sessions are to be held as CPG develops ideas for the project.

The CPG website ([www.cpg-global.com](http://www.cpg-global.com)) will provide another means for local residents to put forward ideas for this project. A link is to be provided from the Latrobe City Council website in the near future.

Ideas put forward by residents attending this forum included major earthworks to 'dig out' the Leisure Centre (to improve visibility) and

reduce the slope of the adjacent green space; utilising the green space for gardens and/or BBQ facilities; upgrading this section of Eel Hole Creek to ponds and wetlands (as has been done on the other side of McDonald Way); removing the 'dip' of the path across the creek by 'lifting' the height of a new bridge; relocating or redesigning the Leisure Centre car park; providing an improved 'network' of recreational pathways between the Education Precinct, Leisure Centre, Student Residences and Town Centre.

The CDCA 'Open Forum'



Meeting in March was attended by approximately twenty local residents. Cr Darrell White had agreed to facilitate our meeting, but at the last minute was unable to attend due to a family matter. Cr Ed Vermeulen (our Mayor) kindly stepped in to chair proceedings and was happy to answer a variety of questions put to him by the audience.

Questions ranged on topics from the temporary closure of the Churchill swimming pool to the future of coal mining and electricity generation.

Other suggestions were made concerning the adoption of a town logo (such as the Town Symbol), new town entry signage and the development of a Community Information/Tourist Radio facility.

Contact CDCA by writing to us at PO Box 191, Churchill, email [mgcdca@hotmail.com](mailto:mgcdca@hotmail.com) or phone 5122 2997.

CDCA Committee meetings are held on the fourth Wednesday of each month. Observers are welcome. Our April meeting is scheduled for Wednesday April 25, 7pm in Studio 1, Churchill Hub, Philip Parade.

# Open Garden Scheme for Hazelwood North

Ken and Alice Rae invite the public to visit their eight acres of beautiful garden.

Enjoy a wander through the many pathways and discover the nooks and crannies with a delightful surprise around each corner.

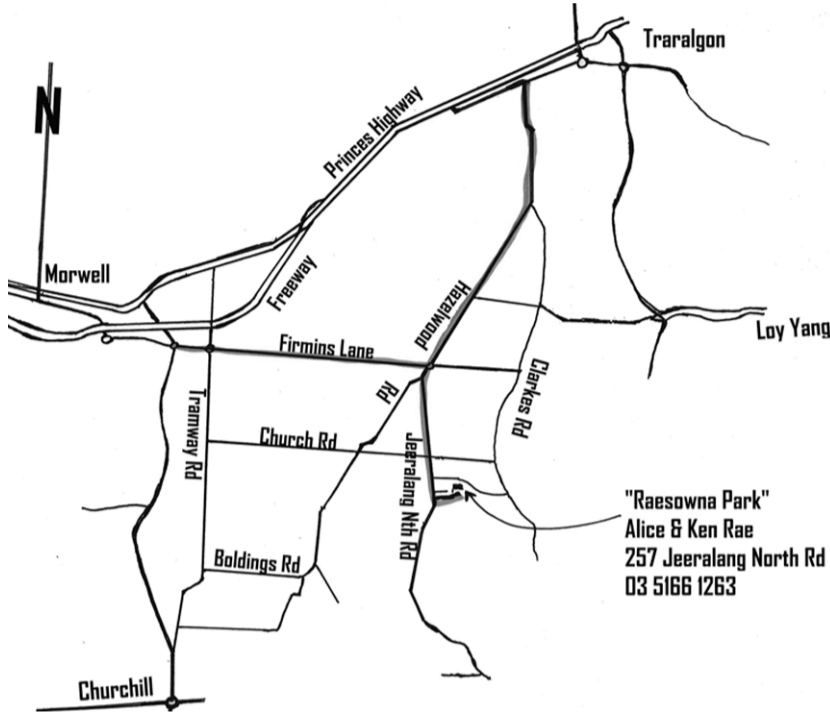
Take your time and be prepared to stay a while to take in the atmosphere.

Entry to the garden is \$7 per person, Under 18s are free.

There will be a sausage sizzle, Devonshire teas, cakes, plants, jams and pickles and garden ornaments stalls, plus photos of the garden available for sale, all to add to the day's activities and pleasures.

In the past this garden has been used for weddings (100 have been celebrated here) and brides-to-be are welcome to come for a look.

The map to the right will show you how to locate this expansive garden off the Jeeralang North Road.



## Gippsland campus welcomes new Head of Nursing and Midwifery



the University of Tasmania.

Associate Professor Field commenced his career as a psychiatric nurse in 1977, working in hospitals throughout Sydney and regional New South Wales.

In 1986, Associate Professor Field completed his Bachelor of Legal Studies, and was admitted to the Supreme Court of NSW as a barrister in 1997 and as a solicitor in 1988.

Since that time, Associate Professor Field has held a range of executive and senior teaching positions with the University of New England, James Cook University and the University of Adelaide.

With experience working in regional and remote areas, Associate Professor Field brings considerable knowledge in developing distance and flexible education options to help overcome the tyranny of distance, and enable more Australians – regardless of where they may live – to study at university.

This has included significant work with Indigenous communities, including almost five years in the

Torres Strait to establish a range of university degrees tailored to the needs of Indigenous students and help increase the number of Indigenous nurses and teachers.

In addition to his teaching appointments, Associate Professor Field has built an international reputation as a research leader in evidence-based nursing practice, and has been widely published in academic journals, papers and conference proceedings in Australia and around the world.

His doctoral thesis, from the University of Adelaide, involved a discursive analysis of the murder of patients by nurses, and his research and writing continues to build on this work.

Associate Professor Field is a Fellow of the Royal College of Nursing Australia, a Fellow of the College of Nursing and an Honorary Research Fellow of the Menzies Research Institute.

Monash University has welcomed leading nurse educator and internationally-recognised researcher, Associate Professor John Field, as the new Head of Nursing and Midwifery at its Gippsland campus.

Associate Professor Field, who commenced the position last month, brings over 30 years of experience in nursing and health education, and holds qualifications in nursing, education, law and management.

Associate Professor Field was appointed following the departure of Professor Karen Francis, who left in late 2011 to take an appointment with Charles Sturt University in Wagga Wagga.

Prior to joining Monash University's Gippsland campus, Associate Professor Field was the Associate Head of School and Director (Research and Higher Degrees) in the School of Nursing and Midwifery at

### CHURCHILL CHINESE RESTAURANT



#### Lunch

Tues - Fri 11.30 am - 2.00 pm

**Dinner** (Open 7 nights)

Sun - Thurs 5.00 pm - 10.00 pm

Fri - Sat 5.00 pm - 11.00 pm

Shop 16, Hazelwood Shopping Village

Please call to book

Phone: 5122 3294

BYO  
Licensed

## Smart Saver

Discount variety shop



Lowest Prices in Churchill

**S A L E** **20% OFF** **S A L E**  
**GIFTWARE**  
when this ad is presented!

AVAILABLE FROM APRIL 19 TO MAY 12

Shop 3 Hazelwood Village Shopping Centre, Churchill

## JB COMPUTERS

71A, George St, Morwell 3840 (Opp. Bendigo Bank)

Ph: 5133 7617 / [www.jbcomputers.com.au](http://www.jbcomputers.com.au)

### NEW PC + LCD, \$598

REPAIRS, VIRUS REMOVAL, UPGRADES

LAPTOP AND PC PARTS, NOTEBOOK REPAIRS

UNIVERSAL LAPTOP CHARGER - \$59

TREND INTERNET SECURITY - \$49 (3 USER)

USED PC from \$150, USED LAPTOP \$250

DIGITAL CAMERA ACCESSORIES

CHEAP DVD/CD DISKS AND COVERS, ETC.

**PRINTER INK CARTRIDGES from \$5.95**  
**100% COMPATIBLE FOR EPSON, HP AND CANON**

### Churchill NOODLE BAR

**FAST TAKE AWAY**



Specialise in

Noodles & Chinese Cuisine

**OPEN 7 DAYS**  
**TRADING HOURS**

Mon - Fri: 11.00 am - 9.00 pm

Sat - Sun: 4.00 pm - 9.00 pm

**EAT - IN OR TAKE AWAY**

- ★ Asian / Chinese / Malaysian Style Noodles
  - ★ Spicy / Vegetarian or Combination Rice Dish
  - ★ Lunch & Dinner Pack Menu
- (All Meals Served with special Fried Rice or Steamed Rice)
- ★ CHINESE CUISINE: Main Course Dishes for you to Share with your Whole Family
  - ★ We Provide our Fast Food Service with your Counter Order OR Phone Take Away Order

**DON'T COOK AT HOME**  
**LET US DO THE COOKING ...**



**FAST TAKEAWAY**  
**RING NOW: (03) 5122 1191**

# Church News

## Saturday Breakfast

By Olivia Jackson

The Saturday Breakfast on March 24, was well attended with 30 present. These included the four grand children of our host, Keith Enders: Lily, Matilda, Molly and India, who were very well behaved and we hope they enjoyed their visit.

After we had eaten breakfast, we listened to an interesting talk by the Rev. Marilyn Obersby. Her talk was entitled "Once Upon a Pilgrimage." She talked about a Celtic Christian tour she had taken in 2002 and how she had led a group in both 2004 and 2008. In her latest group was a lady of 84 years, who not only kept up with all the activities of the group but also managed to climb 250 steps to reach the top of a tower in Durham cathedral!

They stayed in Canterbury in a 15th century hotel. While in Canterbury, they saw the place where witches and suspected witches were drowned in the river. They also went on a Candlelight Pilgrimage through the Canterbury Cathedral, beginning at the baptismal font and ending at A'Beckett's tomb.

At Durham they visited Durham Cathedral, where one of the Harry Potter films had been made. They went to Jarra and saw the Anglo Saxon Church of St.Paul's there. At Durham they also visited St. Deiniol Theological Library. This is a residential library where tourists can go for dinner, bed and breakfast. They visited some chapels in Wales. Some had a holy well in the centre. One had a pool where people were said to be healed and left their crutches



there. One of their most pleasant experiences was to have a Celtic harpist for the evening.

We all enjoyed the talk and the accompanying pictures.

The next Breakfast will be held on April 28 and Graham Budd will be the guest speaker. Graham was a British child migrant to Australia arriving in January 1939. His talk will be about his experiences and about the British child migration to Australia.

People interested in attending should contact Keith Enders on 51221148 or at kbenders@net-tech.com.au by Thursday April 26.

## Chaplain's Reflections

Easter is the grounding event of the Christian faith. In it, we find we are not 'Jesusians' but Christians. We follow the risen Christ, who was, and is, and always will be. It is this risen and eternal Christ who inhabits and loves our world today and calls us to live out the resurrection story to all creation.

The resurrection story is not an easy one to grasp and yet, it has existed from the first moment of creation. It is a story that expresses the creative, transforming power of God's love in the face of anything our lives may encounter, and our commission to live that life-giving love back into our world determinedly, generously and passionately.

Victore Frankl, a survivor of the Nazi death camps, relates in his book, *Man's Search for Meaning*, that to survive the worst humans can do to each other is possible, if our life contains meaning; if we take our life 'seriously' as a divine gift. He states that while we can't control what happens in life, we can control how we respond. If our self-esteem, identity and life's meaning depend on other's opinions of us or what we own, or our status, or our appearance, what happens if these things are taken away? We are left with nothing.

...most men in the concentration camps believed that the real opportunities of life had passed. Yet, in reality, there was an opportunity and a challenge. One could make a victory of these experiences, turning life into an inner triumph, or one could ignore the challenge and simply vegetate.....

Dr Alexander Shaia, Christian educator, psychologist, spiritual director, writer, and founder and director of the Blue Door Retreat in Santa Fe, New Mexico relates this story:

The son and grandson of Lebanese Catholic Christians who immigrated to

the United States, he grew up in Birmingham, Alabama, during the struggle for civil rights. Because of his family's origins, they were considered "coloured." Someone—possibly the Ku Klux Klan—burned down his grandmother's house, piling her Lebanese and Christian possessions together and dousing them with kerosene. The family did not know if she was in the house or had escaped. She had survived. Five days later, the family met for Sunday dinner. The grandmother, as matriarch, gave thanks for the meal and then looked silently at the generations gathered around her. "Finally she just simply said, 'No hate,'" Shaia recalls. He credits his grandmother with rescuing the family from a cycle of hatred, gifting them with the ability to live out God's call to forgive and to love. This is also our call from God.

Through the Easter story, God calls us to live out the Christ life of forgiveness and love. To do this we need to know that we are deeply loved by God and that the world in which we live needs to know the life-giving benefits of that love. It is not an easy path to walk. It means making choices like: walking away from apathy and becoming involved; standing against injustices wherever they occur; caring for creation; giving up grudges and preconceived ideas; stop seeing ourselves as victims; challenging our reluctance to change and our fear and dislike of those who are different.... We can only achieve transformation in our lives when we open ourselves to the Christ life and begin to live lovingly, compassionately, generously and passionately in the power of God's resurrection love. When we allow God to transform us, we offer God the opportunity to transform the world.

## Lumen Christi Snippets

### World Day of Prayer

Many thanks to Marion and her helpers who organized the celebration for World Day of Prayer on Friday March 2 at Churchill.

### Lumen Christi Reconnect Program May-June

Please consider providing support to this important venture, through prayer and/or participation in one of the teams: Program, Communication, Social, Hospitality, or Follow-up. Contact Person is Ann Van Rhine

### Lumen Christi Playgroup

Lumen Christi Playgroup meets on Thursdays at 9.30-11.30am during the school terms. Contact Kim

Parer, 5122 3517

### Thank you to Lumen Christi Parishioners

A very big thank you to all the parishioners of Churchill, Yinnar, and Boolarra for their preparation for, and celebration of, Bishop Prowse's visitation to the parish on Saturday and Sunday March 17 and 18. Bishop Prowse will be visiting the Morwell Parish December 7 - 9, 2012.

### Thank you Lumen Christi Parish for your support and generosity.

My bald head has served to raise a bit over \$1,500 from all sources for the Leukemia Foundation - Naomi Matthyssen

# Church Times

### Lumen Christi Catholic Church

35 Walker Parade, Churchill  
Tel: 5122 2226

Father Hugh Brown  
Father Francis Otobo  
Saturday: Mass: 6.00pm  
Sunday: Mass: 9.00am  
1st and 3rd Sundays:  
Yinnar: Mass: 10.30 am  
2nd and 4th Sundays:  
Boolarra: Mass: 10.30am

### Boolarra / Yinnar Co-Operating Parish

Week 1 - 11am at Boolarra Anglican H C  
Week 2 - 11am at Boolarra U C A  
Week 3 - 11am at Yinnar U C A H C  
Week 4 - 11am at Yinnar Worship Service  
Week 5 - 11am at Yinnar South Anglican H C

### Co-operating Churches of Churchill

Rev. Marilyn Obersby  
Williams Avenue,  
Churchill.  
Tel: 5122 1480  
Glenda and Ian  
Combridge  
Tel: 5166 1819  
Sunday Service: 9.00am.



**Churchill Christian Fellowship**  
Maple Crescent, Churchill.  
Sunday: 10.00am  
Ladies Meeting:  
Tuesday 10.00am

## Co-Operating Churches Snippets

Over this last month the Churchill Fire Brigade have installed fire extinguishers for us, and Ray Ancellieri's workers have installed emergency and exit lighting.

We wish to thank both these groups for an excellent job and for their kind consideration.

Our Lenten studies have been along a different path to usual, with Rev. Marilyn Obersby leading studies and discussions in the Celtic style.

The Celts believed that God was in all creation, so everything was sacred and everywhere was holy ground.

This meant seeing the essential goodness of all creation, and that as God's children we are all responsible to love and care for every created thing whether it be another person or a plant or an animal.

They believed that every living thing moves to the rhythm of God's heartbeat, and we are to listen deep within us for that heartbeat, to hear God's word to us.

Coffee Connections folks were treated to a walk down Collins St in the early days.

There were also some significant birthdays celebrated, with Pat turning 70 and Joan not disclosing what the year was. It was a happy time of sharing.

Ian Combridge, in his message for the all-age worship service, reminded us that God will act, and we need to be patient.

After many months of working to bring the two parishes of Boolarra/Yinnar and Churchill together as one, we celebrated our birth with a wonderful joyous

service- our '0' birthday, with signing of the Memorandum of Understanding, announcing our new joint parish council members, participating in a meaningfully worded service and having things like a cake, pass the parcel and happy birthday streamers to create the atmosphere.

Rev Tim Angus, Gippsland Presbytery Minister, was the preacher and he reminded us that working together has its problems but they can all be overcome by committing our work to God and waiting on His guidance.

A delicious bring and share lunch filled the hungry following the lengthy service.

The new parish council members are Ian Combridge - Chair, Robern Lubawski - Secretary, Rosslyn Jackson - Treasurer, Rae Billing Correspondence Secretary, George Francis, Bev Littlejohn, Cathie Halliwell and Ruth Place.

Saturday Breakfast guest Rev Marilyn Obersby, treated us to a talk and slide show of the places where she has conducted Celtic Pilgrimages in England, Scotland, Ireland and Wales.

A fuller report appears elsewhere in this issue.

Easter Club for the grade 1-4 children of Churchill Primary School was held on March 29.

The children enjoyed the power point presentation of the Easter story and the variety of craft activities which followed.

The significance of hot cross buns and Easter eggs was explained.

# PEST CONTROL SERVICES - I & G COMBRIDGE

## 5166 1822 - THE TRUSTED NAME 20 YEARS - 5166 1822

# Bishop Prowse visits Lumen Christi Parish

By Fr. Francis Ootobo



History was made in the Lumen Christi Parish, Churchill, and in the life of the Bishop of the Catholic Diocese of Sale, Most Rev. Christopher Prowse, on Friday March 16, 2012, when he arrived at the premises of the Lumen Christi Parish. History in the sense that since his Episcopal Ordination, Installation and taking Canonical Possession of the Catholic Diocese of Sale, Bishop Prowse was visiting the Lumen Christi Parish "officially" for the first time, and visiting some of the churches, like St. Francis de Sales Boolarra and Our Lady of Good Counsel, Yinnar, for the first time in his life. Isn't that terrific!!

It was in the cool of the evening of March 16, we were getting prepared to start the Lenten Group meeting, when the bishop arrived. He alighted from his car in his usual self, with fresh smiles, and was welcomed by the Parish Priest, Fr. Hugh Brown and his associate, Fr. Francis Ootobo. Also present to welcome him was the chairman of the Parish Pastoral Council, Mike Answerth. After some exchange of pleasantries and taking of fresh air, the bishop and the rest of us went into the meeting hall. Before the commencement of the meeting, the Parish Priest officially welcomed him to the parish. This official welcome was also endorsed by the chairman of the Pastoral Council. Bishop Prowse participated actively in the meeting and the discussion, and at the end of the meeting, gave us his Episcopal blessing.

The following day, March 17, was the feast day of St. Patrick. Mass had been arranged to take place at St. Francis de Sales, Boolarra. Shortly before the Mass time, we arrived at the church premises, and the bishop took his time feasting his eyes on the beauty of the environment and the cleanliness of the church compound and building. Shortly afterwards, Mass commenced.

In his homily, the bishop connected everyone present to the celebration of the day, the feast of St. Patrick. He said the first missionaries that came into Australia were of Irish heritage. Even Fr. Francis, who concelebrated the Mass, recalled the Irish bishop, Shanahan, who took the Gospel to the East of Nigeria from where the faith was passed to his own diocese. Hence, we were all connected to the Irish by faith. He encouraged us all to pass on the faith to the next generation. During the Mass, he blessed Marion Answerth, who turned seventy that day. At the end of the Mass, we had a lovely luncheon.

The bishop then took his time to visit the elderly who could not be present at Mass during the day and he blessed them. He also visited the Hazelwood nursing home. By evening, after the Saturday evening Mass, we had a delightful time with the bishop at a dinner in the Churchill Hotel. It was a good night!

The last day, March 18, was marked by the celebration of the Sunday Eucharist in which the Parish Priest, Fr Hugh Brown, concelebrated with the bishop. The school children of Lumen Christi Primary School thrilled the congregation by their melodious tunes during the mass. This was followed by a goodbye lunch, after which the bishop expressed his appreciation and returned to Sale.

The visit was very important and especially symbolic. Apart from being the official duty of the bishop to pay pastoral visits to churches and institutions within his Canonical Jurisdiction, I see in this visit, the symbol of a father looking after his children, asking how they are faring, wishing them well, and giving them his paternal blessing. This visit, I believe, will go a long way to improving and solidifying the presence and the blessings of God, not just in the church, but also in the community and in individual lives, for it is written: Every place that the sole of your foot will tread upon I have given to you as a possession ( cf. Joshua 1:3ff).

**Ann's Cafe & Bar**

Now Open

EAT-IN or TAKEAWAY

Breakfast, Lunch and In-betweens

Groups welcome - Outside catering available

Monday to Friday 8-6 pm, Saturday 8-4 pm

Phone 5122 2515

## Churchill & District Lions Club



CONTACT  
Bill Hurenkamp

Meet  
1st and 3rd  
Wednesday  
of each Month

PHONE:  
5174 4221



PTY LTD

13 George Street Morwell, 3840  
Tel: (03) 5134 2555 Fax: (03) 5134 3109

*Providing a Complete Service to the Community*

- Spectacle Makers
- Sun Glasses
- Contact Lens Practitioners
- Eye Examinations
- Cataract, Diabetes & Glaucoma Co-Management



**Volunteer Your Time**

**Support Young People  
to Become Safe Drivers**

Berry Street needs experienced drivers to join the Latrobe Community L2P Learner Driver Mentor Program to assist learners (16 - 20 yrs) gain the 120 hours of driving experience required to apply for a probationary licence.

If you can:

- spend an hour or two a week with a learner in the driving environment
- help learners to develop safe and practical driving skills
- build positive and supportive friendships with a young person

We will:

- provide comprehensive Volunteer Supervising Driver Training
- supply a fully sponsored automatic program vehicle
- ensure ongoing support through the Berry Street Gippsland Mentoring Community

**Be inspired to see your learner reach their potential  
and achieve their driving goals!**

For further information contact Jenn Murray on 5134 5971 or email [jmurray@berrystreet.org.au](mailto:jmurray@berrystreet.org.au)

Undergo a selection process, an interview and complete the training and be prepared to spend time with a young person.

**Your driving experience could make a difference!**



[www.berrystreet.org.au](http://www.berrystreet.org.au)



Berry Street believes all children should have a good childhood,  
growing up feeling safe, nurtured and with hope for the future.

# West Coast USA

I've just returned from an amazing whirlwind week on the west coast of the USA.

If anyone thinks Disney is just for kids, they need to think again. For those of us who grew up watching Walt Disney on a Sunday evening on the TV will relive their childhood memories on a visit to Disneyland. It has been more than ten years since my last visit and many things remained the same, but technology has seen Disney move with the times as well. The nightly Fantasmic water and laser show is a wonderful display of laser lights and over 1,200 fountains that shoot water more 60 metres into the air. The laser lights feature Disney music, stories and characters from all eras.

From Southern California into Northern California, where the weather was decidedly cooler, but perfect to explore the vibrant city of San Francisco. No visit would be complete without a walk over the iconic Golden Gate Bridge, the twists of Lombard Street, China Town, the hippy precinct Haight Ashbury and of course a ride on the Cable car down to Fisherman's Wharf.

And saving the best till last, Las Vegas. This truly is a city that does not sleep. Although built as a casino town, one does not have to gamble to enjoy the sights the streets have to offer. With a least ten themed hotels on the Las Vegas strip each hotel has



nightly shows and entertainment that can keep you wandering for hours whether day or night. The neon lights are truly a sight to behold.

With all these wonderful places to visit, as well as many more I have not listed, together with our wonderful Aussie dollars holding strong against the US dollar, the shopping was extraordinary.

If you'd like to know more about this wonderful destination, give me a call, Irene.



213 Commercial  
Road, Morwell

Phone  
5134 3388

**Jetset Travel**  
KNOW THE WORLD WE KNOW

**Morwell**  
Licence No.32298

# Outdoor Living

☆ Verandahs ☆ Gazebos ☆ Carports ☆ Custom made



Please call Leigh for a free quote

**Murphy Trading** PTY LTD 8 Saskia Way, Morwell

Phone 5134 8400, 0429 332 047

Gippsland Young Womens & Children's



## Arthritis Support Group

BRINGING SOME SUNSHINE INTO YOUR LIFE WITH FRIENDSHIP, SUPPORT AND INFORMATION

If you know anyone with a Musculoskeletal or Auto Immune condition such as Rheumatoid Arthritis, Fibromyalgia or Osteoporosis, or someone who has a child with arthritis, and who may benefit from joining our support group from your surrounding areas, then please give us a call, send us an email or just simply find us on Facebook, and send us a message.

We will be holding regular meetings all around Gippsland so keep your eye on our Facebook page for the Upcoming Dates and Guest Speakers that may interest you or your family.

*From Little Things Big Things Grow*

Phone: Gayle on **5122 1032**

or Jenny on **5133 9357**

Email at: [gywcasg@y7mail.com](mailto:gywcasg@y7mail.com)

or find us on Facebook: Ywcasg Gippsland

Our Meetings are held every second Wednesday of every month at Latrobe Community Health Service from 11.30am – 1:30pm.

Dates and venue subject to change so please call one of us to check first.

We look forward to hearing from you and seeing you at our meetings.

*Light lunch and tea and coffee will be provided.*

## Rotary Club of Hazelwood

BY Leo Billington, Club Program Director



While the Rotary Club of Hazelwood does not meet on Monday public holidays, club members have enjoyed hosting three exceptional guest speakers during March. Each speaker shared their interests and passion in what they do with their lives.

Rebecca Faltyn, editor and publisher of the highly successful Gippsland Country Life magazine was guest speaker early in March.

Rebecca related the humble beginnings of her quarterly magazine which is now distributed and sold throughout Australia.

Since 2005, this magazine has been able to focus on stories sourced exclusively from Gippsland, and is now the only truly Gippsland magazine providing wide coverage of life in this region.

Rebecca explained the magazine is now available in Qantas lounges in all capital cities – quite an achievement for a Gippsland product.

Nola Bransgrove OAM was another guest speaker who told of her early childhood in Neerim South, where she met and married Norm. This successful partnership has been involved in the road freight industry over the past 40 years. Nola, in particular, related her significant involvement in the National Trucking Federation of which she became President.

Nola outlined her commitment to encouraging women to go into business and be proud of their achievements.

Morwell resident, Alan Hare presented a unique story of his life as an amputee after a serious road accident many years ago. As a staunch member of the Latrobe Valley Amputee's Support Group Inc, Alan outlined the trials and tribulations he personally endured with the loss of most of his right arm during an era when those with missing limbs were seen as being "different".

Today, thankfully, societal attitudes have changed, however, there appears to be reluctance by governments to show support for a National Disability Insurance Scheme. Alan related the efforts of the Latrobe Valley Amputee's Support Group Inc in assisting and counseling amputees throughout Central Gippsland.

On April 1, club members conducted a successful sausage barbeque-sizzle at Bunnings Hardware at Midvalley.

These occasions are always great fun, raising funds for eventual distribution to a number of local charities and organisations throughout the Latrobe Valley. Hundreds of customers stop for a chat, buy a sausage or two or three, and learn more about Rotary.

## New memorial gates at the Hazelwood Cemetery officially opened in January

With their majestic appearance of grandeur, the gates were manufactured and erected by local volunteers late last year, and represent a new exciting era of longer term planning for landscaping and beautification for the cemetery and its environs.

According to Mr Leo Billington, Hazelwood Cemetery Trust Chairperson, the cemetery was officially gazetted by the Victorian government in April 1879 to service the Morwell, Hazelwood and Yinnar areas and while there have been some improvements, it has basically remained unchanged until the now famous landmark - granite posts and iron cast memorial gates - were erected in early 1948.

"This landmark entry to the cemetery was officially opened on February 14, 1948 and dedicated to the memory of district residents who perished in a tragic bushfire on February 14, 1944. The care and custody of this entry, now heritage listed by Latrobe City Council several years ago, was subsequently given to the cemetery trustees," Mr Billington said.

"Now, following agreement from a number of interested and committed stakeholders, these new gates designate an entry to the whole cemetery reserve bounded by Cemetery Avenue and the Yinnar Road.

Once the main roads were re-aligned several years ago to allow for expansion of the nearby coal fields owned and managed by IPR-GDF SUEZ Hazelwood, an opportunity was identified to embark on a staged approach to landscaping the whole area immediately adjacent to the works area. The new gates and fencing represent stage one," Mr Billington explained.

Future plans include general beautification, renewal of fencing, some public seating and development of an area proposed for an extension of the cemetery's lawn section.

Mr Billington paid tribute to the hard work of several important stakeholders.

"Mr Don DiFabrizio, Mr Tony Lawless, IPR-GDF SUEZ Hazelwood, the Yinnar Lions Club, the Yinnar and District Community Association, Latrobe City and the cemetery trustees have all played significant roles in having these gates and fencing in place. Tony Lawless was also instrumental in co-ordinating a recent working bee to clear around the new entry, further enhancing its new look," Mr Billington said.

"The Hazelwood Cemetery Trust owes a huge gratitude of thanks to Don DiFabrizio for his enthusiastic support for this project. His enduring energy and determination towards completion of the project is very much appreciated.

Don purchased and supplied all the steel, designed and fabricated the gates and fences, and paid for painting and transportation. He worked long hours to ensure everything was completed according to plan and on time. Don's contribution is valued at approximately \$30,000 and in addition, Traralgon based contractor, Mr Joe Colaciello assisted Don with concreting works.

This total project was donated on behalf of the DiFabrizio family and our sincere thanks must be extended to them for such a generous contribution to our community" Mr Billington said.

Mr Billington said IPR-GDF SUEZ Hazelwood will assume the responsibility of opening and closing the gates as part of their normal, daily security patrols, with security cameras also providing extra protection to the general area.

"Since the day-light saving period has finished, the gates will be open from 6.00 am and close at 6.00 pm, seven days a week. Access outside these hours will be through a pedestrian gate therefore requiring vehicles to be parked outside."

For further information – call Mr Leo Billington 0458 661 848.

The Co-operating Churches in Churchill

Ladies Fellowship

Invites you to hear

**Mike Answerth**

(Executive Officer of the Gippsland Education Precinct)

Speak on

**The Churchill Art & Culture Pathway**

**Tuesday 8th May 7.30pm**

At the church centre 1 Williams Avenue Churchill

All welcome  
Supper provided

For more information contact

Anne Lyne 51221444  
Robyn Mauger 51661306



## Youth Ministry kicks off in Morwell and Churchill

By Fr. Francis Otobo



It has been the desire and prayer of the Parish Priest of the Morwell Catholic Parish and the Lumen Christi Parish, Churchill, Fr. Hugh Brown and his assistant, Fr. Francis, to have the youth come together under the umbrella of the Catholic Youth Ministry. Since they assumed duties in the parishes of Morwell and Churchill, they have been looking for ways of making this dream come true. They have asked questions, sought advice and listened to suggestions. Finally, the dream has become a reality.

The youth came together for their first meeting on March 25, 2012. It was a very interesting meeting, as those present expressed their desire and wish to have had this meeting and ministry a long time ago.

They were full of zeal and enthusiasm. In all, there were about twenty five youth in attendance at this inaugural meeting with about six apologies.

At the start of the meeting, Fr Hugh gave us the opening prayer and thereafter welcomed everybody present to the parish and the presbytery (the venue of the meeting).

After this, he excused himself and left us to be. All those present tried to say something about themselves so as to enable the next person to know something about him or her.

That was very interesting as it helped us to get to know each other and cleared the way for discussion.

After these initial formalities, Fr. Francis highlighted the purpose of the gathering and the need to be together as youth.

He said, "A society without a formidable and active youth is heading for annihilation, for the youth is the strength and the future of every society." He encouraged all those present to be personally committed to the project, as personal commitment is the backbone of every venture.

Those who were present pledged their commitment and willingness to make the project work. A couple of action plans were itemised which will be due for discussion by the next meeting. A general decision for a fortnightly meeting was arrived at, with the venue of meeting rotating between Morwell and Churchill.

At the meeting we also realized that one of us, Emily Haesler, had her 21st birthday the previous night, and another, Andrew Szczepanek, was to have his 30th birthday a couple of days ahead, and so the group, in unison of voice and tune, chanted the Happy Birthday song for them. We sang like an opera singing group, very melodious. It was lovely. It was full of life. It was all fun.

Fr Francis appreciated all those who turned up, and those who sent in their apologies. We closed the meeting smiling and laughing as we sang the song: I've got a feeling, everything's gonna be alright.

## Churchill Gardening Group "With a view to trees"

It is the end of March and the year is flying by, bringing with it the time to think about choosing and planting trees. We should perhaps never 'impulse buy a tree'.

We should think clearly what type of tree we need. Do we need a tall tree that will cast dense shade? Do we need a beautiful flowering one or perhaps a deciduous one that will let light through in the winter months? Then there is colour to consider.

All these questions should be decided before we even commence to prepare the ground for our chosen tree. I have chosen to talk to you about this subject because we are now well into autumn and 'things' are humming in the garden including the bees which so far this year seem plentiful.

A couple of years back I noticed a distinct lack of bees at my place.

Anyway, it is almost time to think about bare-rooted trees, roses, stone fruit and bare-rooted ornamental trees, so I am hoping this little early prompting will make us think about planning, choosing and preparing for this year's tree adventure.

Remember that every tree that we plant helps keep our planet healthy.

Not room for a tree at your place? But you have the



perfect position!! Don't despair, you can always plant a tree in a large pot or half wine barrel, and they will grow very well indeed. We have been sowing an oak tree, liquid amber, various maples, crepe myrtles and they are all up to four metres high.

They do, however, require more water and feeding in the summer months. You can grow almost any plant in a container if you wish to.

I have planted cabbage, cauliflower and broccoli and will soon be planting other vegetables and getting ready for peas (thank heaven for the genius who thought of offering a punnet of just two of each of these brassicas at a time).

Every plant is thriving in our flower garden and really looking quite colourful with zinnias, dahlias, michelmas, daisy, Shasta daisy, fuchsia, echinacea, lycoris, and yellow autumn crocus, to name a few, so I am hoping your garden is the same.


Last week a friend and myself were able to purchase a long-wanted bat plant.

If you are familiar with this plant, you will know that its flower is almost black in colour and looks all the world like a bat's face with long whiskers.

The plant itself is somewhat tuberous and the leaves are like a small Arum lily in appearance.

Being a bit tropical it will be living under the pergola. I am even thinking of giving it some insulation for the winter.

All for now folks!



**Churchill CHIROPRACTIC**

Dr David A Forsys, Chiropractor  
Laberta K Forsys, MSc, Dietitian

3 Switchback Road,  
Churchill  
Phone 5122 3336



# Steve McRae

## Dental Prosthetist

SATISFACTION FULLY GUARANTEED  
DISCOUNTED PENSIONER RATES

- New full and partial dentures
- Medicare
- Repairs/additions and relines
- Victorian Denture Scheme
- Laminated mouthguards
- Veteran's Affairs
- 20 years local experience
- No referrals necessary

17 Tarwin Street, Morwell 5133 9329

96 Hotham Street, Traralgon 5176 1464

COMPLETE DENTURE CARE



## Churchill Champions Relay Team Fundraiser

### PARTY PLAN AFTERNOON

Come along and help raise  
much needed funds for the cancer council

SATURDAY 5TH MAY 2012  
3 pm TO 7 pm

CHURCHILL HOTEL  
1 BALFOUR PLACE  
CHURCHILL VIC 3842

- Entry gold coin donation
- Finger food throughout afternoon
- Drinks available at bar prices
- Door prizes
- Raffles
- Fun for everyone :)

Enquiries contact  
Christine 0401249726

Postie Fashions

Nutrimetics

Creative Memories

Undercover Wear

Personalised Jewellery

Chocoholics Anonymous

Oasis Homeware

Intimo

Yayme

Flaschengist

Tupperware

Sketch Kids

Stampin Up

Cadja Handbags

Lorraine Lea Linen

Kats Hair Design

Party Lites

Fitzard Photography

TLC Seductions

Chefs Toolbox

Fifth Avenue

Enjo

Phoenix Trading

## SINGING PICNIC

BILLY'S CREEK,  
MORWELL NATIONAL PARK!

Family friendly fun for the whole community!

### SUNDAY, APRIL 29

11.30 AM ONWARDS.

Come and enjoy a day out! Stay as long as you like!

**Programme:** Sing – Shared Lunch – Sing –  
Walk to the Weir – Home

*In case of inclement weather, we will meet at the  
Churchill Hub on Phillip Parade*

You are invited to share a picnic and sing with the Singers at the Well at Billy's Creek, Junction Road. Please bring some food to share; and a desire to sing and have fun.

*If possible, please car pool as parking at  
Billy's Creek is very limited.*

The Singers at the Well are a group that has been meeting about once or twice a month for the sheer pleasure of singing and making music together – none of us are trained singers. It keeps us happy, connected and vibrant.

**ALL WELCOME!**

For information, call Yvonne: 5122 2573 or  
email: my.matthyssen@gmail.com

*Sing out Loud (SoL)! Laugh out Loud (LoL)!  
Share some Food! Build Community!*

*Get to know people!*

# Friends of Morwell National Park

At this month's activity we had 13 members in attendance.

Matt was along for his first activity, but this time he had only called in to meet the group and collect the membership form. Matt plans to be along for the next activity.

Rob was along to remove weed plants he has located previously including some Banana Passionfruit.

Ken and Mike went to collect the waders and poisons while the rest of us organized ourselves.

The group walked to the Baniff Road creek crossing where Wendy, John, Emma and Rod donned waders while Cathy, Mike, Beryl and Darren travelled to Potato Flat to get into their

waders. Cathy, Mike, Beryl and Darren worked downstream from the Potato Flat creek crossing while Wendy, John, Emma and Rod worked upstream from Baniff Road creek crossing.

Ken stayed on dry ground and photographed lichens along the banks. Both groups found many Tutsan plants, many of which were advanced plants, both in flower and in fruit. Many bags of flowers and berries were collected.

When the two groups met up lunch was had. Rob had also returned to join us for lunch. Lunch involved the discussion of animal identification and koala dissection.

This was a great conversation to have while

eating lunch.

After lunch the groups moved further down the creek towards the car park. After lunch the area covered was between the track (and creek) dogleg just after the steep downhill and the Baniff's Road creek crossing.

Many more large Tutsan plants were located and many bags were filled with flowers and berries. At one point while many large plants were being removed, Ken was pressed into service to remove berries while more plants could be removed.

Another willow was also found and poisoned. The photo below shows the group ready to enter the creek.

At the middle of the day (just before lunch) we were fortunate enough to spot a Cormorant.

The Cormorant watched our progress for quite a while. It was not affected by our presence in the creek and happily watched us.

It allowed both groups to work towards it and Ken was also able to come in to take some photos.

When the bird had had enough of our company it flew off to allow us to remove the



Tutsan around where the bird was.

The Little Pied Cormorant, Little Shag or Kawaupaka (*Microcarbo melanoleucos*) is a water bird, found around the coasts, islands, estuaries, and inland waters of Australia, New Guinea, New Zealand, Malaysia, and Indonesia, and around the islands of the south-western Pacific and the sub-Antarctic.

It is a small short-billed cormorant, usually black above and white below with a yellow bill and small crest. (Wikipedia).



## Churchill and District Lioness Club



We have been able to assist the Churchill Lion's Club on several occasions this year, catering at the Home Expo. and the Multicultural Children's concert, both held at Kernot Hall. Our members attended a barbeque, held at Club member Lyle Haustorfer's home, to farewell one of our members, Margaret Dawson, who has re-located to Hobart to be near family. We all wish her well for the future. Four Lionesses travelled to Doveton for the annual Breakaway weekend, hosted this year by

the Endeavour Hills Lionesses. This gathering brings together Lioness Clubs from around Victoria and South Australia to mix socially and renew friendships formed over the years. A bus trip saw us visiting the Shrine and the Police Academy. Combined with wonderful guest speakers, good food, music and accommodation, the weekend was a great success. We are gathering up a supply of rugs, scarves, beanies etc. for The Open Family Org. They support the street kids in areas of Melbourne.



### Pre Footy Start Specials



This is your last chance to get your projects done before the local footy season starts. To help you get all your projects done on time and under budget, the team at ProRent is offering a 10% discount on all Gardening and Earthmoving equipment for the months of April/May.



*Extra 10% Discount if you mention this ad*



Pickup Friday afternoon between 3.30 pm and 5.00 pm and drop back Monday morning between 7.00 am and 8.00 am and we will only charge you one day's hire.

**1 Saskia Way, Morwell 03 5133 6888**  
www.prorent.com.au

## STRUT RE-GAS

GIPPSLAND  
*"The Strut Specialist"*

Tel: 5166 1665 Mob: 0407 542 122

Struts are not throw away items ...  
They can be RE-GASSED

- Sales of Steel and Stainless Struts
- Repairs to all types of Struts
- Design applications and pressure modification
- Handles and Fittings available







# Churchill Fire Brigade - Planned Burns



The Churchill Fire Brigade has for some time been planning for a number of fuel reduction burns in the Churchill area to assist Latrobe City Council in meeting their land management responsibilities for these tracts of land.

The first burn was conducted in the triangle of grass land on the South Western end of Manning Drive (area immediately South of the Scout Hall), on Monday March 19, when fifteen members of Churchill and Hazelwood North brigades attended the area to carry out the burn.

The weather conditions were perfect with the wind from the north east, to carry the smoke away from Churchill.

This burn was primarily intended for ecological reasons to create the necessary conditions for the Kangaroo Paw to re-germinate, but there are also strong fuel reduction grounds now as well.

The fuel reduction will also assist in meeting strategic fire protection strategies.

Some residents took the time to come out and thank the

members for their work.

The fire was fully extinguished when the brigades left.

### Smoke Detector Checks

With Daylight Saving Time finished, the Churchill Fire brigade members are again arranging smoke detector checks for the elderly in town.

If you haven't been contacted, or are an elderly new person to town and would like to be included in this free service, please ring Ruth 5122 1961, who will arrange this for you.



## Concrete never looked so good!



# Holcim

### Concrete

Holcim supply all size loads from Commercial to Residential and Domestic. We also have an extensive range of colour and exposed concrete.



### Technical

Holcim have a NATA accredited technical laboratory based in Morwell.

### Aggregates

Holcim supply an extensive range of quarry products from aggregate through to crushed rock and packing sand.



# Holcim

formerly Readymix

### Concrete

- Morwell Mick 03 5133 4800
- Leongatha Alaister 03 5662 3415

### Aggregates

- Jeeralang Quarry Dianne 03 5166 1444
- Tyers Sand Dianne 03 5166 1444

## Darren Chester

FEDERAL MEMBER FOR GIPPSLAND

[www.darrenchester.com](http://www.darrenchester.com)



THE NATIONALS for Regional Australia

Advertise

in



your local  
community  
newspaper

# CHURCHILL CHILD CARE

Get in early and book your tour now.

- Open from 6.30am to 6.30pm.
- Fully qualified caring, attentive staff.
- Full time, part time or occasional care for 0-5 years.
- Educational programs that encourage and develop skills.

APPOINTMENTS CALL  
**51226227**



Poolh Corner

Child Care Centre

EST. 1980



Churchill Hub  
Philip Parade, Churchill  
Web: [mugsu.org.au](http://mugsu.org.au)



## Becoming Jade

An environmental initiative Amber Loader (MUGSU Environment Director)

Becoming Jade is based on the idea that Gippsland students can become more GREEN> sustainable>eco-friendly.

Jade itself is a solid green stone, thus symbolically it represents the ultimate goal of students becoming totally sustainable at Gippsland.

"Becoming" is definitely a key term, This is a starting point. So YES, You may not YET be as environmentally savvy as you should be. But through the Becoming Jade Blog and Facebook page you can gain the knowledge of HOW TO LIVE BETTER, for yourself, your neighbours and ultimately the earth, all while studying at Gippsland University.

To be a part of Becoming Jade, visit the two links below and 'Like Us' on Facebook.

WEBSITE BLOG: <http://www.mugsu.org.au/connect-me/student-blogs/becomingjade/>

FACEBOOK: <http://www.facebook.com/groups/becomingJADE/?ref=ts>



**MUGSU**

MONASH UNIVERSITY GIPPSLAND STUDENT UNION



Phone: (03) 5122 6498 | Email: [union@mugsu.edu](mailto:union@mugsu.edu) | Website: <http://www.mugsu.org.au>

# Escape and Action Gambling

Gambler's Help offers counselling and financial counselling services for family and friends as well as people with gambling problems. For further information, phone 1800 242 696.

Gambler's Help often comes across articles that differentiate between escape gambling and action gambling.

The articles can refer to "she" when discussing a problem gambler who plays the pokies for escape as traditionally that is how women presented when pokies first came to Victoria and they became a problem gambling issue.

In addition, when poker games and online sports betting started to become popular, Gambler's Help counsellors were seeing young men with problem gambling habits.

So when discussing "action" gambling, "he" was used. However, this is a generalisation and there is now evidence appearing that women are starting to also gamble on line and they may drift into "action gambling".

At the same time, men also come for help to Gambler's Help for escape gambling.

Escape gambling is when a person uses gambling to escape from thoughts or situations they do not want to confront or cannot confront.

It could be to avoid tension at home, or to suppress an incident relating to the past or to avoid loneliness.

Technically this can be labelled experiential avoidance.

Unfortunately for the gambler, the avoidance can lead to further problems as the gambling itself becomes a problem, and winning is no longer the objective as it has been replaced by the avoidance.

Generally the escape gambler tends to be someone who is playing the pokies (EGMS) Even if she wins, she will keep on playing until all the available money is spent. And then she will start hoping that she can break even.

She leaves broke, saying to herself that she will not return and never play again.

She thinks, if only the machine stopped at the amount she wanted to spend when she first came in.

When at home, she lies to the family as to how she is spending her day and the planning will recommence on how to get the money for the next time.

And then the cycle will continue until the losses become insurmountable and a way out is sought.

The discussion paper, Women and Gambling: Issues of difference (November 2011)<sup>1</sup>, states that "the literature indicates that women problem gamblers are more likely to gamble to "escape".

This escape can be from social isolation and loneliness or from grief or trauma.

Importantly the types of gambling preferred are themselves relatively isolating, which, particularly as losses mount, can lead to increased stress and isolation, a vicious circle..."

Action gambling is typified by someone who may have started gambling at a young age and had a big win early on.

He has the illusion that he is smarter than others and may even consider "going professional." He tends to play games that require some sort of skill: poker, card games generally, and sports betting.

He may be fairly gregarious and seeks the approval of others. Winning gives him a thrill and as the winning phase continues he places larger amounts to maintain the thrill.

He progressively spends more time gambling.

As AZCCG2 writes, the action gambler "eventually begins to lose." He will start to place larger amounts and takes more chances, thinking that he will win more if he wins.

He is starting to chase his losses and may start borrowing money. By managing to borrow money to pay not just his immediate debts but also his gambling, he will consider that a win.

He will talk about his wins, but not his losses.

As everything collapses around him: his family, job and social network, he may still be in denial until and if, he gets treatment

Reprinted from Gambler's Help Gippsland Newsletter issue 14, March 2012 with permission from Latrobe Community Health Service.



**COPIES NOW AVAILABLE**

each month from the front counter **Woolworths Supermarket** West Place Shopping Centre.

Also available from **Churchill Newsagency** Hazelwood Village

**S&J CYCLES**

**RIDE LIFE RIDE GIANT**

Announcing the arrival of **ROCKY MOUNTAIN** and **JAMIS** bicycles

Shane Dunn  
35 Tarwin Street, Morwell

Phone **5134 3891**  
Fax 5134 5503  
Email: sjcycles@netspace.net.au

**PAYLESS FLOORS** Floor Coverings Clearance Centre

Shop 3/22 Vestan Drive, Morwell

All rugs **20%, 30% or 50% OFF**

**Children's Rugs** (Lots in Stock)

Glow in the night rugs  Kids road and city rugs

**Up to 50% OFF Room Size Remnants** (Lots in Stock)

Huge range **Vinyls and Runners**

**Berber Carpets** 100% wool 200 lm in stock (norm. \$129 lm)  
Sale Price **\$89 lm** 3 colours available

**Carpets from \$39 lm**

**Heaps of Wools, Nylons/Polys** at unbelievable prices  
Check us out - Phone **5134 6800**, Fax **5134 6822**

## Rainfall for March

By Bruce Stephenson

The Churchill rainfall for March was 96.5 mil to 29th. If it rains and records before the end of the month I will give you an update.

The total so far for 2012 is 249 mil. Last year for the same period our total for these 3 months was 316 mil. Both these totals for the 3 month period are the two highest for over 20 years.

Hope you had a happy Easter everyone and I hope you spend



time enjoying the beautiful autumn colours we will have over the next month or so.



## Hazelwood Rotary

MEETINGS: MONDAYS 6.30PM - 8.00PM

ITALIAN AUSTRALIAN SPORTING AND SOCIAL CLUB MORWELL

Over \$1000 donated to Strzelecki District Scouts and Kurnal College in 2011

**CONTACT:**  
Carol Crewe, President

**PHONE:**  
5171 1626

**Nook and Cranny Book Exchange**

*New Larger Location*

97 Buckley Street Morwell

SANDRA KUEMPFLEIN

**Morwell Florist**

8 TARWIN STREET PH/FAX: (03) 5134 4266  
SHOP 31 MID VALLEY SHOPPING CENTRE MORWELL PH/FAX: (03) 5133 7322  
www.morwellflorist.com.au

## Churchill Self Storage

**THREE SIZES:**

- 3m x 3m
- 3m x 4.5m
- 3m x 6m

*Situated at corner of Switchback Rd & McCormick St, Churchill - Across from Woody's Joinery*

SECURE ACCESS VIA ELECTRIC GATE & YOUR PADLOCK

Phone 03 5134 2790

**Professionals** Contact: **B. J Bennett & Co. REAL ESTATE PTY LTD**  
219 COMMERCIAL RD, MORWELL

**New Churchill Motors**

Lot 8 Phillip Parade, Churchill, Vic. 3840.  
Tel. (03) 51221380

**SPECIALISED SERVICE**

Specializing in General repairs and Servicing of 4WD and Passenger Vehicles Including:-

- Brake and Clutch Machining & Replacement
- \* Cylinder head and Flywheel machining
- \* Steering and Suspension repairs
- \* Tyre fitting and balancing
- \* Log book servicing and general repairs
- \* Specialist Diagnostic equipment for current models

All repairs covered by Repco Authorized Service Nationwide Warranty.

# BUS TIMETABLES ROUTE 3 & 4

**Traralgon to Churchill**

Route 3 via Monash University

Zone 12 or 13

**Description of route**

**Traralgon to Churchill**  
Departs from the terminus at Traralgon Plaza Shopping Centre and runs via Franklin St, Seymour St, Princes St to Traralgon Station (bay 3); then via Princes St, Breed St, Bank St, Hazelwood Rd, Boldings Rd, Tramway Rd, Monash Way, Northways Rd to Monash University; then via Northways Rd, Phillip Pde to the terminus at Churchill Shopping Centre in Georgina Pl.

**Churchill to Traralgon**  
Departs from the terminus at Churchill Shopping Centre in Georgina Pl and runs via the reverse of the route described above to Bank St, Traralgon; then via Breed St, Seymour St, Church St, Grey St and Franklin St the terminus at Traralgon Plaza Shopping Centre.

**Customers please note**

- Buses operate to a Sunday timetable on public holidays.
- This service from Traralgon connects with Churchill - Boolarra route 4.
- From time to time bus schedules may change or be delayed without notice due to unforeseen circumstances.

All services on this route are operated by wheelchair accessible vehicles except in unforeseen circumstances.

**Timing points**

- Traralgon Plaza Shopping Centre - Market St
- Traralgon Station - Princes St
- Fernlea Street - Hazelwood Rd
- Monash University - Northways Rd
- Churchill Shopping Centre - Georgina Pl
- St Michael's Primary School - Church St

Ticketing zones: Single zone, Zone overlap, VLine train station, VLine coach stop, Connecting bus, Train line, Terminus, Timing point.

For public transport information call 136 196 (TTY) 9619 2727 or visit viclink.com.au

MAP NOT TO SCALE

**Monday to Friday Route 3 - Traralgon to Churchill**

	AM	AM	AM	PM	PM	PM
Traralgon Plaza Shopping Centre	6.50	8.50	10.50	12.50	2.50	4.50
Traralgon Station	6.53	8.53	10.53	12.53	2.53	4.53
Fernlea St	6.58	8.58	10.58	12.58	2.58	4.58
Monash University	7.12	9.12	11.12	1.12	3.12	5.12
Churchill Shopping Centre	7.17	9.17	11.17	1.17	3.17	5.17

**Monday to Friday Route 3 - Churchill to Traralgon**

	AM	AM	PM	PM	PM
Churchill Shopping Centre	8.07	10.07	12.07	2.07	4.07
Monash University	8.12	10.12	12.12	2.12	4.12
Fernlea St	8.26	10.26	12.26	2.26	4.26
St Michael's Primary School	8.31	10.31	12.31	2.31	4.31
Traralgon Plaza Shopping Centre	8.34	10.34	12.34	2.34	4.34

**Saturday Route 3 - Traralgon to Churchill**

	AM	AM	PM	PM	PM
Traralgon Plaza Shopping Centre	8.50	10.50	12.50	2.50	4.50
Traralgon Station	8.53	10.53	12.53	2.53	4.53
Fernlea St	8.58	10.58	12.58	2.58	4.58
Monash University	9.12	11.12	1.12	3.12	5.12
Churchill Shopping Centre	9.17	11.17	1.17	3.17	5.17

**Saturday Route 3 - Churchill to Traralgon**

	AM	PM	PM	PM	PM
Churchill Shopping Centre	10.07	12.07	2.07	4.07	6.07
Monash University	10.12	12.12	2.12	4.12	6.12
Fernlea St	10.26	12.26	2.26	4.26	6.26
St Michael's Primary School	10.31	12.31	2.31	4.31	6.31
Traralgon Plaza Shopping Centre	10.34	12.34	2.34	4.34	6.34

**Sunday and public holidays Route 3 - Traralgon to Churchill**

	AM	AM	PM	PM	PM
Traralgon Plaza Shopping Centre	8.50	10.50	12.50	2.50	4.50
Traralgon Station	8.53	10.53	12.53	2.53	4.53
Fernlea St	8.58	10.58	12.58	2.58	4.58
Monash University	9.12	11.12	1.12	3.12	5.12

**Sunday and public holidays Route 3 - Churchill to Traralgon**

	AM	PM	PM	PM	PM
Churchill Shopping Centre	10.07	12.07	2.07	4.07	6.07
Monash University	10.12	12.12	2.12	4.12	6.12
Fernlea St	10.26	12.26	2.26	4.26	6.26
St Michael's Primary School	10.31	12.31	2.31	4.31	6.31
Traralgon Plaza Shopping Centre	10.34	12.34	2.34	4.34	6.34

**Churchill to Boolarra**

Route 4 via Yinnar

Zone 10 or 11

**Description of route**

**Churchill to Boolarra**  
Departs from the terminus at Churchill Shopping Centre in Georgina Pl and runs via Georgina Pl, Monash Way (Boolarra Churchill Rd), Jumbuk Rd to Main St/Yinnar Rd, Yinnar; then via Monash Way, Bastin St, to the terminus at Tarwin St (Boolarra/Mirboo North Rd), Boolarra.

**Boolarra to Churchill**  
Departs from the terminus on Tarwin St (Boolarra/Mirboo North Rd), Boolarra and runs via Monash Way (Boolarra Churchill Rd) to Main St/Yinnar Rd, Yinnar; then via Jumbuk Rd, Monash Way to the terminus at Churchill Shopping Centre in Georgina Pl.

**Customers please note**

- Buses operate to a Sunday timetable on public holidays.
- From time to time bus schedules may change or be delayed without notice due to unforeseen circumstances.

All services on this route are operated by wheelchair accessible vehicles except in unforeseen circumstances.

**Timing points**

- Churchill Shopping Centre - Georgina Pl
- Yinnar bus loop - Main St
- Boolarra bus terminus - Christian St

Ticketing zones: Single zone, Zone overlap, VLine train station, VLine coach stop, Connecting bus, Train line, Terminus, Timing point.

For public transport information call 136 196 (TTY) 9619 2727 or visit viclink.com.au

MAP NOT TO SCALE

**Monday to Friday Route 4 - Churchill to Boolarra**

	AM	AM	AM	PM	PM	PM
Churchill Shopping Centre	7.17	9.17	11.17	1.17	3.17	5.17
Yinnar bus loop	7.27	9.27	11.27	1.27	3.27	5.27
Boolarra Terminus	7.40	9.40	11.40	1.40	3.40	5.40

**Monday to Friday Route 4 - Boolarra to Churchill**

	AM	AM	AM	PM	PM	PM
Boolarra Terminus	7.46	9.46	11.46	1.46	3.46	5.46
Yinnar bus loop	7.56	9.56	11.56	1.56	3.56	5.56
Churchill Shopping Centre	8.07	10.07	12.07	2.07	4.07	6.07

**Saturday Route 4 - Churchill to Boolarra**

	AM	AM	PM	PM	PM
Churchill Shopping Centre	9.17	11.17	1.17	3.17	5.17
Yinnar bus loop	9.27	11.27	1.27	3.27	5.27
Boolarra Terminus	9.40	11.40	1.40	3.40	5.40

**Saturday Route 4 - Boolarra to Churchill**

	AM	AM	PM	PM	PM
Boolarra Terminus	9.46	11.46	1.46	3.46	5.46
Yinnar bus loop	9.56	11.56	1.56	3.56	5.56
Churchill Shopping Centre	10.07	12.07	2.07	4.07	6.07

**Sunday and public holidays Route 4 - Churchill to Boolarra**

	AM	AM	PM	PM	PM
Churchill Shopping Centre	9.17	11.17	1.17	3.17	5.17
Yinnar bus loop	9.27	11.27	1.27	3.27	5.27
Boolarra Terminus	9.40	11.40	1.40	3.40	5.40

**Sunday and public holidays Route 4 - Boolarra to Churchill**

	AM	AM	PM	PM	PM
Boolarra Terminus	9.46	11.46	1.46	3.46	5.46
Yinnar bus loop	9.56	11.56	1.56	3.56	5.56
Churchill Shopping Centre	10.07	12.07	2.07	4.07	6.07



Churchill & District News invite you to enter our  
2012 Short Story and Poetry Competition.

There are some great prizes, with all entrants under 12 receiving a certificate of participation and a small gift.

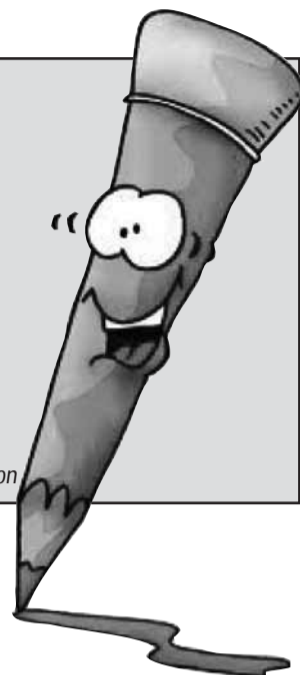
If you have any queries or require information, conditions of entry and entry forms please do not hesitate to contact us by email at [cdneditorial@aussiebb.com.au](mailto:cdneditorial@aussiebb.com.au) or tel: 03 5122 1961, 03 5134 1717.

Entry forms and conditions are available online at [www.cdnews.com.au](http://www.cdnews.com.au)

## Categories

1. Children's 7 and Under Short story/poem or picture story.
2. Children's 8 - 10 yrs Short Story (illustrations welcome).
3. Children's 8 - 10 yrs Poetry (illustrations welcome).
4. Children's 11 - 13 yrs Short Story (illustrations welcome).
5. Children's 11 - 13 yrs Poetry (illustrations welcome).
6. 14 - 18 yrs Short Story.
7. 14 - 18 yrs Poetry.
8. Adult Short Story.
9. Adult Poetry.
10. A Children's Story: A story written for children.

\*Categories 1 - 5 will include prizes for best illustration and best presentation



## CONDITIONS OF ENTRY

1. All stories must have a completed entry form attached to the manuscript with a paper clip (no pins or staples). An emailed copy may **ALSO** be supplied for categories 6 - 10 above to [cdneditorial@aussiebb.com.au](mailto:cdneditorial@aussiebb.com.au)
2. The author's name must only be on the entry form and not on the manuscript.
3. Entries must be original, previously unpublished work.
4. Each entry must include a title.
5. Multiple entries will be accepted.
6. Unless otherwise specified, permission to reproduce entries in the Churchill & District News or for publicity purposes will be assumed. Copyright remains with the author.
7. Writers will be credited whenever their writing is reproduced.
8. Entries must be received by 22 June, 2012.
9. All pages should be numbered.
10. Length of stories and poems -

**STORIES are to be:**

- \***Adult:** 1000 - 2500 words.
- \***14 - 18 years:** 500 - 2000 words.
- \***Children:** up to 500 words.

**POETRY, free or rhyming verse to be:**

- \***Adult:** min. 8 lines and max. 48 lines.
- \***14 - 18 years:** min. 8 lines and max. 48 lines.
- \***Children:** up to 20 lines.

11. Entries will not be returned and participants should keep a copy of their work.
12. The Judges decision is final and no correspondence will be entered into.
13. Signing of the entry form for this competition constitutes acceptance of these conditions of entry.

**Entries can be mailed to:**

Churchill & District News Short Story and Poetry Competition,  
PO Box 234, Churchill 3842  
or **Emailed to:** [cdneditorial@aussiebb.com.au](mailto:cdneditorial@aussiebb.com.au)

**Closing Date:** June 22, 2012

**Entry Fees:**

**\$3.00** Per Short Story/Children's Story (Concession or Student \$2.00)  
**\$3.00** Per Poem (Concession or Student \$2.00)  
Children, Under 7, Under 12 and Under 18 Categories - 50c.



**Churchill & District News Short Story and Poetry Competition 2012**

# ENTRY FORM

Name: \_\_\_\_\_

Address: \_\_\_\_\_

Telephone: \_\_\_\_\_

I have entered: \_\_\_\_\_ Short Story(s)      \_\_\_\_\_ Poem(s)

Title of Story(s): \_\_\_\_\_ Category \_\_\_\_\_

\_\_\_\_\_

Title of Poem(s): \_\_\_\_\_ Category \_\_\_\_\_

\_\_\_\_\_

I have read and understood the conditions of entry and agree to abide by them. I certify that this is an original unpublished story or poem, written by myself.

This entry form can be completed on behalf of U12's by a parent, guardian or teacher.

Signature \_\_\_\_\_

**NOTE**

Entry Fee to be included with Entry Form.  
Please make Cheques or Postal Orders payable to Churchill & District News.

**No cash please**

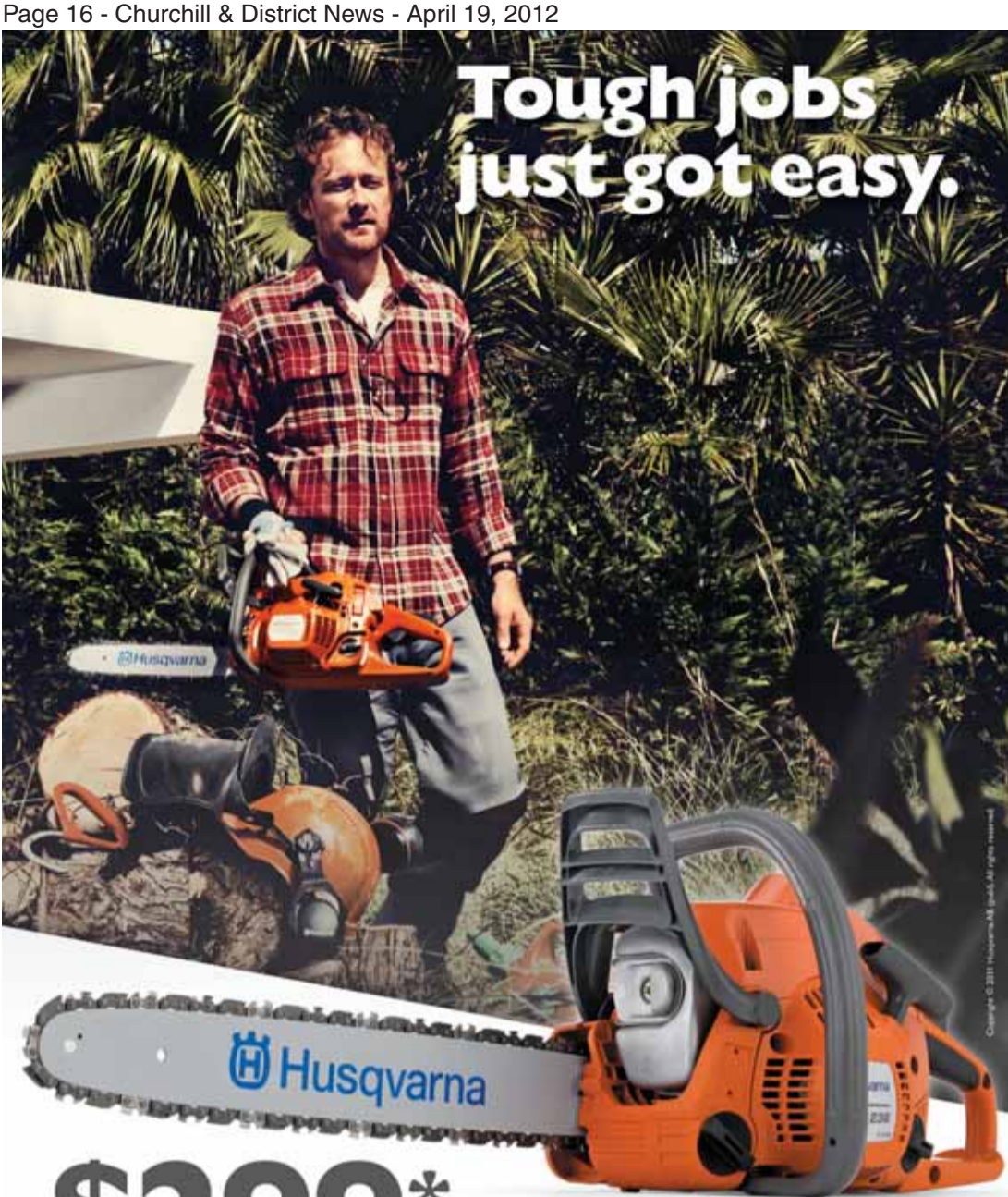
**Email:** [cdneditorial@aussiebb.com.au](mailto:cdneditorial@aussiebb.com.au)

**Mail entries to:** PO Box 234, Churchill 3842



**Closing  
Date  
June 22  
2012**

# Tough jobs just got easy.



## \$299\*

RRP incl. GST.  
\*While Stocks Last

### HUSQVARNA 236 CHAINSAW

38.2cc - 14" - 4.7kg  
X-Torq engine - delivers more power, lower fuel consumption and reduced exhaust emissions.



only \$349  
236e 38.2cc - 14" - 4.6kg



only \$399  
240e 38.2cc - 16" - 4.7kg



only \$449  
240e TRIO 38.2cc - 16" - 4.7kg



only \$669  
435e 40.9cc - 15" - 4.4kg



only \$769  
440e 40.9cc - 16" - 4.4kg



only \$869  
445e 45.7cc - 16" - 5.1kg

## TAMING THE WILD™



YOUR AUTHORISED HUSQVARNA SPECIALIST DEALER

**Central Gippsland Mowers & Chainsaws**

533 Princes Drive, Morwell Ph: 5134 8899

309 Princes Highway, Traralgon Ph: 5176 1999

[www.husqvarna.com.au](http://www.husqvarna.com.au)



# Churchill North Primary School After School Care & Playgroup

**After School Care**  
Qualified Coordinator  
Jillian Keenan

**Fees & Charges**  
Each hour block is \$5.00 per child.  
Families may claim Child Care Benefit with respect to this program.

**Hours of Operation**  
Monday—Friday during the school term.  
Hours of operation are between 3:15—5:15.  
Sessions may be booked for an hour at a time.



### Playgroup

Your child can have fun playing with others while you meet other parents and share the joys and challenges of parenting.

Playgroup allows children to:

- Learn through play, listen to stories, sing & play musical instruments
- Have fun inside & outside, making friends and developing new skills
- Interact with other adults, learn simple rules & routines

### Activities include:

Painting & pasting, Sandpit play, Climbing equipment, Play dough  
Home corner, Construction, Music & movement, Stories & much more

**Where:** Churchill North Primary School Coolabah Drive, Churchill.

**When:** Wednesdays & Fridays (during school terms)

**Time:** 9.00—11.00 am

**Bring:** A healthy snack & drink

**Cost:** Gold coin

**Contact** 5122 1976





# Churchill and District Lions Club - a very busy month of fundraising!

Members of the Churchill Lions Club, assisted at times by the Lioness Club, have been very busy cooking and fund-raising over this last month.



The Expo at Morwell was held over three days. Lots of food was cooked and sold. The proceeds are going to purchase an ECG machine for Latrobe Regional Hospital.

The Multi-Cultural Days at Immigration Park in Morwell involved the Lions supplying food on two occasions. On Thursday, with the help of the Lioness Club members, they served a gourmet lunch to the performers. On Sunday they cooked their usual menu with good takings.

Two Bunnings BBQ days raised money for Camp Quality, giving kids with cancer some happy time out.

The Lions Club is looking for businesses who would like to sponsor the Camp Quality Rally by paying to have their logo on the Camp Quality Car. This is a great way to advertise your business as the car goes to many places.

Licola Village - we have raised \$32,000 to renovate the carriage to make the village wheelchair-friendly.

Two awards have been won in the Wellington Shire People's Awards by the club, for their work at Licola Village.

The first was for the Best Caravan, Cabin or Camping Park. The second was for the Best Family Activity. President Peter McShane, who is CEO of the village said, "We were rapt to

receive one award but over the moon to receive two. These awards are a deserved endorsement of the efforts made by our wonderful members and our tremendous staff on site, who always go the extra mile to make the place so special. Being the CEO is an absolute ball with such great support from everyone, especially the Lions members who willingly attend working bees.

There was also catering at Moe for Camp Quality carers and campers where they fed eighty plus at Gippsland Heritage Park. This was done in conjunction with Rosedale Speedway which is a major sponsor of the Camp Quality Rally. The ladies from the speedway made and supplied the sweets.

The Ride for Sight was held with Norm Hall of the Churchill Lions a participant. The ride went from Briagalong to Moe. The Churchill Lions donated \$1000 to the cause, and the Camp Quality Car was used as an escort vehicle.

Churchill Lions cooked the BBQ for the children who participated in the Churchill Tennis Club and Churchill and District News Tennis Come and Try Day.

**ANITI HAIR STUDIO**

SHOP 5, WEST PLACE  
CHURCHILL  
TEL: 5122 3233

**SPECIAL 15% OFF**  
all cut and colour for  
**ONE WEEK**  
before Mother's Day

**Opening Hours**  
Monday: Closed  
Tuesday: 9 am - Till Late  
Wednesday - Friday: 9 am - 5.30 pm  
Thursday: 9 am - Till Late  
Friday: 9 am - 5.30 pm  
Saturday: 8.30 am - 12.30 pm

**SIMS**  
METAL MANAGEMENT  
Scrap Metal Recyclers

**GET PAID TO RECYCLE YOUR METAL**



# WANTED

ALL RECYCLABLE METALS

- Aluminium Cans
- Cars and Parts
- Aluminium
- Stainless Steel
- Car batteries
- Pots and Pans
- Copper
- Lead
- Old tools
- White goods
- Brass
- Hot water systems
- Steel
- Electric Cables



**Come and see Robert and the team at our Churchill yard**

Open Mon - Fri 7.30am to 4.30pm  
2-6 Webster Street, Churchill

Tel: 03 5122 1052  
www.scrapmetal.com.au

# AIRLIE BANK HOMESTEAD

## A brief History by Keith Brownbill

Part 3

### AIRLIE BANK REBORN

The outstanding collection of photographs taken by the late George Auchterlonie featuring Australia's Light Horse Brigade in World War 1 has been classified and prepared for public presentation by Gloria and Glen Auchterlonie under the title *Dad's War Stuff – The Story of a Gippsland Lighthorseman*. It has been presented with great success at various venues throughout the State and the decision has been made to give it a permanent home in Morwell. The restored Airlie Bank homestead is the chosen venue. How appropriate it is that Thomas Ogilvy, born in Airlie Bank and son of the original owner, should also have been in the Light Horse.

Local people, Airlie Bank neighbours, and the Bridle family had long pushed for restoration of the homestead. Advance Morwell under the leadership of Max Williamson took up the challenge and gained approval from the Latrobe Shire Council for a restored Airlie Bank homestead to be used to house the Dads War Stuff exhibition. Funding from the Commonwealth Government under a community employment scheme was obtained and further financial help has come from a Latrobe Shire grant and money raised from a public appeal.

Restoration of the homestead started on October 11, and was scheduled to be completed for the official opening on April 16, 2000. Local businesses, trades people and volunteers gave valuable help. Working bees under the guidance of Mrs Parry have begun to restore the garden - the first taking place on August 28, 1999. Miss Essie's little garden was restored. Margaret Donovan provided cuttings of roses from the first Bridle farm at Koroit for replanting in the garden. Her aunt Emma originally had the roses brought across but none were left in the garden. Fortunately some cuttings went back to the Western District and Miss Emma's great niece who lived in Ardeer (Melbourne) also had the roses and had taken cuttings. These were given to Mrs Parry for replanting. There is one special rose which the family is keen to see growing once more in the homestead garden.

Margaret also had a beautiful patchwork quilt begun prior to 1845 and added to by later generations. It was now finished, and when the homestead was restored it was placed in a special airtight display case - a wall hanging for all to admire.

The restored Airlie Bank is a 'grand home with a lovely garden' - a worthy home for the Dad's War Stuff exhibition. The link with Morwell's history had been restored and the old homestead once again was 'a magnet for visitors'.

### A NEW RESIDENT AT AIRLIE BANK

Bev's Wonder World of Dolls opened on July 21, 2010 when over 30 members of the Latrobe Valley University of the Third Age (U3A) paid a visit to Airlie Bank Homestead and spent a couple of enthralling hours viewing Bev's wonderful presentation of dolls from all over the world. Thanks to the support and enthusiastic co-operation of Advance Morwell, Bev's Wonder World of Dolls is now a popular destination for doll lovers of all ages and nationalities with a wide variety of dolls of varying shapes and sizes, teddies, animals and gollies that will bring back childhood memories and help recall tender associations during earlier years. Bev's amazing collection of dolls is the result of lifelong enthusiasm and dedicated passion for gathering dolls. In the process, Bev has accumulated a vast amount of knowledge and passionate dedication to record in accurate detail these dolls from various sources.

The world famous Bev's Wonder World of Dolls, has over 1000 dolls. You'll be astonished at Bev's ability to assemble and display her dolls to provide this spectacular presentation for your personal enjoyment. Come in and explore the five rooms of this outstanding collection set in the old world atmosphere of Morwell's Airlie Bank Homestead at 31-35 The Boulevard, Morwell

- Light refreshments are available for touring parties

#### Opening Hours

Wednesday – Friday 10am – 3pm

Admission: \$5 adults \$2.50 children

Group rates and tours are available

Telephone (03) 5133 9066



Church group with the Reverend Benn  
in front of Homestead in 1933



Bridle family - April 2000

### Acknowledgements

I wish to acknowledge the contribution of the following:

Robert Bridle and Margaret (Bridle) Donovan, grandchildren of Robert Bridle 4th have provided all the photographs and the bulk of the information on the family and farm.

Mrs Marilyn Buchanan, granddaughter of the original owner, gave us valuable details on the Ogilvy family.

Max Williamson has overseen the Airlie Bank Homestead restoration program. He did much of the original research and

made contact with the Ogilvy family. His general advice and editing of the script has been invaluable.

Jack Hinshelwood has restored many of the fine old photographs. Their quality is a tribute to his skill.

The Late Ivan Maddern's research on the Bridle family has proved an invaluable resource.

The help given by Rob Hellings of Gippsland Printers in the production of a booklet is much appreciated.

The Morwell Chamber of Commerce and Industry for financial support.

# Churchill Neighbourhood Centre Inc. Ph: 5122 2955

Term 2: Monday April 16 - Friday June 29, 2012

Monday	Tuesday	Wednesday	Thursday	Friday
<b>ACDSee Photo Editor</b> 10.00 am - 12.00 noon Learn cropping, red eye reduction, & adjustment.. Restore old photo's	<b>Creative Writing</b> 10.00 am - 12.00 noon Don't wait for your happy ending - write it. Put pen to paper, and share your stories.	<b>Career Development</b> 10.00 am - 3.00 pm  <b>Returning to Study</b> Online learning - self management Study using computers or Traditional class room tuition Having trouble spelling, reading, writing or maths, let us help you get up to speed.	<b>Walk 4 Life</b> 9.00am - 10.00 am Come and join our morning walking group, nothing too strenuous, just to get the old ticker pumping. Start - Lake Hyland car park, Mackeys Road	<b>Basic Computers</b> 10.00 am - 12.00 noon For the beginner, learn the basics
<b>Craft Circle</b> 10.00 am - 12.00 noon Stitch/Chat/Sew/Knit Finish UFO's, socialise, have a Cuppa/chat. Learn to Sew or Knit	<b>Silver Surfers</b> 10.00 am - 12.00 noon Social Media Internet, Email, SMS, Facebook, Skype, Genealogy.	One on One tutoring by appointment	<b>Patchwork</b> (advanced) Morning 10.00 am - 12.00 noon & Afternoon 1.00 pm - 3.00 pm  Learn quilting, material choice, technique & design, or if you need help /advice, call in & we will set you on the right quilting path.	<b>Chit &amp; Chat</b> <b>10.00 am - 12.00 noon</b> Do something different, watch a movie, or go out for lunch. Talk about it, share life's adventures. Make new friends. <b>Book Club</b> <b>Churchill Book Worms</b> Last Friday of the Month Come Wriggle & Read with us
<b>Computers unplugged</b> 1.00 pm - 3.00 pm open up a whole new world of information. Discover how to ... make greeting cards, birthday, etc.. Posters, flyers, calendars	<b>Play Group</b> 11.00 am - 1.00 pm Young Parents support group	<b>Folk Art</b> 12.00 noon - 3.00 pm Learn different brush techniques, create beautiful & functional items for your home, gifts for family and friends.		
<b>Community Workshop</b> Incorporating Men's Shed Program Wednesday 9.30am - 2.30pm  <b>All Welcome</b>	<b>MS Word/Excel/Publisher</b> 12.30 pm - 2.30 pm Editing, formatting, templates, layout, tables, columns, toolbars, shortcut keys, & more	<b>Digital Photography</b> 6 week workshop 18/4 - 30/5 Build camera skills, how to frame the best shots, & use software to correct common problems & create unique images.	<b>YOGA with Carol</b> 6.00 pm to 7.00 pm For more info. 0400 089 801 after 4.00 pm	Phone: 03 5122 2955 Fax: 03 5122 2596 Office Hours: 9.00 am - 3.30 pm Email: churchillnc@bigpond.com Web: www.churchill.org.au Facebook: churchill@gmail.com
<b>Porcelain Painting</b> Whether you are a new China Painter, experienced artist or just a lover of the art form, you will find this forum exciting. Night Class - 7.00 pm - 9.00 pm	<b>Child Immunisation</b> 1.00 pm - 2.00 pm 4th Tuesday each month 24/4, 22/5, 26/6	<b>Patchwork</b> learn the art of quilting , design & material selection. Night Class - 6.30 pm -9.00 pm		
	<b>Tai Chi - with Julie</b>  6.00pm - 7.00pm for more information 5122 2588			<b>Quilting Machine Training</b> by appointment only. Learn to use 'Annie' our Quilting machine.



Children's Bedroom Furniture



Huge Selection on all bedding



Lounge Suite



TV Video Entertainment Unit

GIPPSLAND

# FURNITURE HOUSE GROUP

Established in 1976

Quality Custom-Made Furniture

**VISIT OUR WAREHOUSE**

see your items being made . . .



Bookcases  
Best Range  
Best Prices  
Best Finish



New

VISIT OUR SHOWROOM AT: 224 COMMERCIAL ROAD, MORWELL. PHONE 5134 1888

OR TAKE YOUR PLAN TO OUR FACTORY FOR A FREE QUOTE AT: 73 CHURCH STREET, MORWELL. PHONE/FAX 5134 2933

# Boolarra Primary School

### Brilliant Working Bee Effort!

The school is looking fantastic thanks to the efforts of all the folk who generously gave up time over a recent weekend.

### Free Out of Uniform Day:

To celebrate a fabulous term one, everyone was able to come in casual clothes on the last day of term if they wished to do so.

### Our Athletic Sports:

Penaluna (green house) were the overall champions this year and Strzelecki (yellow house) won the House Spirit trophy.

Despite the impact of the recent bad weather on training sessions with our Athletics expert, Mr John Duck, many of our students displayed great technique with the tricky events such as discus, shot put and high and long jump.

### Yinnar & District Sports:

This day also highlighted some of the very best aspects of our school. Our students showed good endeavour, skills, sportsmanship and cooperation.

Congratulations to Yinnar South Primary School on taking

out 1st place; this was a magnificent effort!

### Ride to School Day

We had 10 students brave the inclement conditions to ride to school, which showed great determination and dedication!

### Egg Roll:

A long standing tradition at our school is to stage an egg roll competition on the last day of school before the Easter break. Each student brings a hardboiled egg which they have decorated so they can identify it. The owner of the eggs that makes it the greatest distance unscathed receives a small prize.

### Short Story by Isabelle Reiske.

#### The Phoenix.

Once there was a Phoenix whose name was Gold. Her mum got taken away from her when she was a kid. Now Gold is older and is looking for her Mum. She went to the only place they would take her, the Curly Forest. It's almost impossible to get rid of it. If you had the best tracking skills you couldn't get out of the forest. Gold set off in the morning of the brightest day of the year. The orange gleamed in her eyes as she swooped down into the curly forest. She had been walking for a long time, the bugs were annoying her. She screeched once, twice, three times. Then she heard something A Phoenix was screeching back at her. All the bugs stopped buzzing. Gold was running as fast as she could to the place where the screeches were coming from. Finally, after ten minutes Gold found her mum locked in a cage. Gold picked at the lock until it came open and they flew off into the bright sun light.

#### Inside a Dragon

##### By Rhianne Cameron

As Jessica awoke she knew that the dragon had swallowed her. She stood up and looked around, it was dull so she could only see a little bit. The smell, oowwhh, rotting carcasses and decaying flesh, she could hear cockroach feet scattering on the carcasses.

She caught a glimpse of another person so she turned around and there was a recent dead person who seemed to be smiling at her or it could have been frowning, she was too frightened to scream, so she just looked away.

"Oh I wish I had never walked into that cave!" she growled at herself.

She had to find a way out, she just had too. Slowly she started walking, she hit a carcass with her foot (by accident) and tripped over onto the hard ground of the dragons stomach. "OOWW" she screamed out, in pain, then she said crying "Oh no, I've ripped my jeans! Mums not going to be happy about that, that's if I ever see her again".

She picked herself up off the slimy floor and began walking again. She thought she could hear screeching but it was just her imagination playing tricks on her. The screeching got louder and louder until she saw 3 massive rats, 1 grey, 1 black, and 1 white, coming down the oesophagus.

"AARRGGHH" she screamed, as she ran. The rats were chasing her, she ran straight into a clear stomach wall.

"OUCH" she cried out in pain, Luckily for Jessica, the rats went a separate way!

She stood up and she was suddenly knocked back down to the ground again, with a gigantic rumble she and everything else in the dragons stomach went all the way back up the oesophagus and back into the brightness of the outside world!

The dragon had chucked up! As soon as Jessica fell, she jumped to her feet and ran, her house came into view. She ran straight inside and hugged her mum, dad, brother and her sister.

Her mum asked, "Where have you been?"

Jessica replied, "You'll never believe me even if I told you!"

### Sad Farewell

Our much loved Business Manager of twenty three years, Ms Wendy Jones is taking leave next term. Wendy is moving to far north NSW and, if she likes it up there, she may not return.

On the last day of term the students and School Council made presentations to Wendy and we all got a little tired and emotional!

Local relieving Business Manager, Ms Sharon Moule will fill in for Wendy next term.



## Churchill North Primary School

### Preps

Preps at Churchill North Primary School have been very busy learning the sounds for all of the letters of the Alphabet.

They have eaten Oranges, made Heart cakes, blown Bubbles, eaten Popcorn, made Mice and made a Quilt to help them learn the different sounds.

On Friday March 10, the Preps had a Wheels Day to help them learn the letter W.

They all brought in their bikes, scooters and skateboards to ride around the school.

The preps loved riding their bikes around the school. Preps have also been learning about their numbers to 10.

By Lucas H

### Churchill North P.S. Perform at the Gippsland Multicultural Festival

On March 15, Grades 3/4M and 5/6O attended the annual Gippsland Multicultural Festival.

The festival went from 10:30am to 2:30pm and was held at Kernot Hall, Morwell.

Various schools from around Gippsland attended the festival and performed their own celebration of what Multiculturalism means to them. Grade 3/4M, along with several Grade 6 students, had been practicing the song; We are One – We are Many to perform on the day, which was brilliant!

The students also decorated the backdrop for the performance, A History of Latrobe Valley which had been designed by their Art teacher, Mrs Algie.

Emily L from 5/6O quoted the performance as interesting and that her favourite performance of the day was Mission Impossible, performed by the Kurnai College Band.

Various quotes from the day included feedback that the standards produced by all schools were very high.

We hope that next year more schools around Gippsland get the opportunity to perform and attend the Gippsland Multicultural Festival.



It is an event not to be missed to celebrate that We Are One – We Are Many.

By Natalie Voss 5/6O

### School Captain Elections at Churchill North Primary School

This year Churchill North Primary School had elections for the role of School and Vice-Captains. Before Grade 6 students started to write their speech they went on a Leadership Camp to learn how to be a good leader.

When they were there, they explored the responsibilities of being a good leader, how to be organized and learnt how to speak to a crowd.

With this knowledge and skills, many Grade 6 students believed they would make a good leader and applied for the positions of School and Vice Captains.

The candidates went through a vigorous process of speech writing, including why they would make a great leader for the school and the values and beliefs they hold.

When the day of elections came, candidates had to read out their speeches in front of the whole school. Of all the wonderful speeches,

4 students were selected to lead Churchill North Primary School; School Captains, Kayla C and Lachlan H and Vice Captains, Emily L and Joel M.

We would like to congratulate the 4 students and wish them luck in the leadership roles in 2012.

By Cayleigh C

### Churchill North Primary School Education Support Team receives Top Award

On March 6, the Education Support team at Churchill North Primary school was recognised for their outstanding team work at the Gippsland Education Excellence Awards.

The team included Mrs Lindgren, Mrs Shorter, Mrs Koostra, Mrs Bishoff, Ms Backhausen and Mrs Lugton.

Mrs Shorter commented 'We were very surprised to receive this award, but also very proud of our achievements.'

It is important that in a small close knit school such as Churchill North, we all work together as a team, and this really benefits the children, which is what our role in a school is all about.'

The Awards showcase the outstanding achievements and practices of teachers, school leaders and support staff at schools in the Gippsland region.

It is the first time that the Support Team at Churchill North Primary School have received the award.

By Tyler Roncari

### House Captains

This year Churchill North Primary School has 4 House Captains and 4 Vice House Captains to represent the school during sporting events.

The House and Vice Captains were carefully selected by the Principal, Mrs

Edwards and the Grade 5/6 teachers. House and Vice Captains were announced at assembly on March 12, and are as follows;

Red Team House Captain, Mickayla B and Vice Captain, Jasmine P

Blue Team House Captain, Matthew S and Vice Captain, Cayleigh C

Green Team House Captain, Dylan B and Vice Captain, Erin G

Yellow Team House Captain, Tyler R and Vice Captain, Jessica M

We wish the Captains and Vice Captains well as they lead Churchill North Primary School's sporting events in 2012.

By Garry D and Hannah M.

We wish the Captains and Vice Captains well as they lead Churchill North Primary School's sporting events in 2012.

Garry D and Hannah M.

### Junior School Council

Junior School Council (JSC) members at Churchill North Primary School held a disco on Tuesday February 28, to raise money to purchase sand equipment and other things needed at the school.

The disco was held in the multipurpose room at lunch time, where glow sticks were sold.

There were lots of coloured lights, good music and lots and lots of dancing.

Madeline Slater said "It was awesome, everybody loved it!" She also suggested that "next time we should have a theme." JSC will hold a meeting and discuss this suggestion for next term.

On Friday March 23, JSC ran a Crazy Hair day at the school to raise money for Cystic Fibrosis, Victoria. We had 2 winners from each class who had the craziest hair.

The winners were P/1 D- Jacinta and Hayden, 1/2 P- Sophie and Lleyton, 2/3 C-Bella and Hudson, 3/4 M-Hannah and Lachlan, 5/6 O- Elizabeth and Callum and 5/6 H-B-Tyler and Imogen.

Churchill North Primary School raised \$99.50 for Cystic Fibrosis Victoria.



## Hazelwood North Primary School

### Gippsland Heritage Park

On Wednesday March 21, Grades 3, 4, 5 and 6's went to Gippsland Heritage Park in Moe. There were 4 groups. The leaders of the groups were Miss Barker, Miss Waite, Mrs Alexander and Mrs Duncan. We went there to learn about the olden days in Latrobe Valley.

At school we went back 100 years. The teacher was called Miss Craken and she was quite strict. We got to write in ink, with pencil and on blackboards.

At the blacksmiths he made a gumleaf and we got to take it back to school. He told stories about things that blacksmiths did when we didn't have any questions.

At the General Store, the cashier [Rob] showed us everything he sold. Some of the things he sold are things that we still buy today. There were also some weird things like fly traps.

At the transport place he took us around Heritage Park to see some old carriages and wagons. We also got to sit in a fire truck. The carriages were very old and rusty, they looked like they were going to fall apart. He showed us family carriages that looked boxed in. Also carriages that could only hold two people and with no roof.



filled in a bridge graph with sticky notes of what we have to do on the day. They helped us set up for the day and helped us run the events.

The next day we had to figure out who was doing what event.

interview different students, teachers and parents to find out how they thought the day went. Each group interviewed at least 2 people and then made a chart to find out what people thought that was the same.

The overall answers were that people enjoyed the day and thought the grade five sixes did a terrific job organising it. However there were a couple of recommendations for next time which were; having a role for each teacher, maybe add or change some activities and maybe to change the amount of time for each event.

By Libby, Hayden and Blake

### Interview with some people from the 1/2A - Old Fashioned Dress up Day.

On Friday March 23, grade 1/2 students participated in a day of school in the olden days, after a visit to the Heritage Park the week before.

Dylan and Thomas interviewed Jaye, Lleyton and Charlotte about this day and their excursion.

Lleyton for the dress up day said that he wore a jacket with holes in it and that he was the only one wearing it. No one wore the same thing as me. Lleyton bought his costume but it was a long time ago. We asked if he had bought any accessories. Then we asked some questions about the Heritage Park. His favourite activity at the Heritage Park was at the Blacksmith. His favourite part about the



At the end of the day we were given a piece of paper with pictures on it and we had to find where they were.

We all had fun at Old Gippsdown and thanks to everyone that showed us about the olden days!

By Ivy, Lori and Sophie

### Sports Day at Hazelwood North Primary School

On Monday March 5, our teachers told us that we had to plan a sports day for the whole school of Hazelwood North Primary School. This was to help us practise for the Yinnar and District sports. We only had four days to organise the day so we had to work fast and be organised. On that Monday we started to plan out the school sports day. First of all we made a planning graph so we knew what the goal was we wanted to achieve.

On Tuesday we finished off our planning graph. Next we

First of all we figured out that we were going to run the day in houses. Next we figured out what was going where and what equipment we needed. That afternoon we had to make a map of our school, it was a bird's eye view. We then made the score cards for all the different houses.

On Thursday in the morning we decided whose map we were going to use. It was close between Thomas and Libby but Thomas won!!!! Next we wrote the students names on the score cards we had made on the Wednesday. Next we had to split the houses in half so there was ones and twos. After that we had a run through of our events and got some of the younger students to try them out so we could find the average time for each age group. We then typed up the averages for each age group.

On Friday it was the day we had been waiting for.....the Sports Day! Before the day started we set up all the events. We

then handed out the house cards to each individual student; and got them to assemble in our central area and split them into their correct teams. The house captains then took them to their first event - each event went for 20 minutes. At the end of the day we ran in relays. They were very exciting to watch! We then added up the scores. The winning team was Blue, second was Green, third was Yellow and Red came fourth.

After that was over we had the challenge to

Blacksmith was when he made a leaf. The bad thing about the day was that it was raining.

Next was Charlotte. Charlotte dressed up as Dorothy from the Wizard of Oz, she liked what she dressed up in. No one dressed up in the same as her on that day. Someone from her family made her dress. She didn't bring any accessories for the occasion. For the Heritage Park her favourite part was playing the old fashioned games. She was in Mrs Morgan's group.

Last to be interviewed was Jaye. For the day he wore olden day clothes. Jaye liked what he wore. No one wore the same as him. Jaye bought his costume from the shops. He brought one accessory and that was a skipping rope. At the Heritage Park his favourite part was the General Store. He was in Mrs Morgan's group.

### Morwell RSL

On Tuesday March 27, the grade 5/6's went to the Morwell RSL. The reason we went there was to learn about ANZAC history.

Firstly we got organised and got on the bus to go to the RSL. When we got there we met Les and Ted. They introduced themselves. There was a slide show about the World War 1 and 2. Ted controlled the slide show.

We split into 2 groups and looked at different guns. It was amazing how the guns have changed during the years. They had to pour steel down the guns so they could put them on the wall for display.

Then we went back to the chairs and watched some short videos about the war. There was a video of an aircraft picking up a boat from the water and there was another video about the boat that takes people to the war.

After all the movies and videos, as they still had their old uniforms from when they fought in the war they chose some people to try on the uniforms and gas masks. These people looked very funny in the outfits.

I really hope we could go to the RSL again because they told us a lot about the war and their time in the war.

By Keiley and Emma



# Churchill Primary School



Younger starters at long distances



Tom has a Sherrin on his head, while Brentan and Bailey look on.

## Sport House Sports

Sport has dominated March at Churchill Primary School. The school sports were held on March 8. It was a fantastic day for all. It was great to see the new preps get involved and the more experienced students give their best efforts. Thanks to Mrs. Halie McColl for her work in preparing our students for the sports and

about people who doubt you. Their message was "Just Keep Trying". They also talked about the attributes of leaders.

### Parent / Student /Teacher Interviews:

These conversations were held recently and it was pleasing to note that most parents were able to attend. It is a great way for the student's progress to be discussed and for new goals to be set.

### Crazy Hair and Casual Clothes Day:

Students were invited to wear casual clothes and do their hair in crazy fashion to support the Easter Raffle. There were some way out styles and a lot of fun to be had on the day.

### Storytime:

P-2 were able to participate in Story time run by Latrobe City recently. The students heard three stories. The highlight was the story which focused on places in the Latrobe Valley, "Where do I Belong".

### Easter Hat Parade

P-2 students were decked out in their Easter Hats on Wednesday March 28. They participated in a parade with lots of parents looking on. The students were also involved in Easter activities during the day.

### School Wide Positive Behaviour Support:

Our team continues to develop the SWPBS philosophy in the school. Our values - Be Respectful, Be Responsible, Be Understanding and Be Your Best - are being taught in the classrooms. We have a new catalogue of rewards, which outline what students can purchase from the "Beehive" with their "Bee tickets." Bee tickets are given to students by all the staff when they are caught demonstrating our values. The Beehive has rewards for 5 tickets right up to 100



Derek Hayman, Carly Hawthorne, Hollie Woodman



for all her organisation of the sports. The school was a sea of colour and the winning house was Blue House. Churchill Primary School Age champions were:

- 5/6 yr olds - Ashleigh Saunders & Savannah Lehrner
- 7yr olds - Oriana Dale & Damon Sinclair
- 8yr olds - Jamal Johnson, Lachlan Bell, Mitchell Bruerton, Jackson McCartney & Alyssa Welsh
- 9yr olds - Kayla Welsh & Liam Beedall
- 10yr olds - Caleb Bell & Shayla Smith
- 11yr olds - Courtney Henshaw & Max Van Der Zwart
- 12/13yr olds - Ryan Lowrie & Hayley Scott.

## Yinnar and District Sports:

A big thank you to all, also to the CPS parents who helped with the sausage sizzle at the sports day in Yinnar. An enthusiastic band of helpers sold drinks and sausages for a number of hours. Our fundraising group is very committed to making Churchill Primary School a great place to work and study.

## Other happenings around the school.

### Leaders' Day in Melbourne:

Mrs Telford and a number of our school leaders went to Melbourne to attend this conference. The participants went into a room and had a notebook each to write ideas and questions for the speakers. These included Joy Smithers, an actor, Andrew Swallow, a football player, Mike Martin, talking about influences which affect you. There was a blind man who played the guitar and rode his bike to the beach from the middle of NSW. The Young Australian of the Year received the award for bringing science to girls in schools. They all talked about reaching your goals and not to worry



Green day at playgroup

tickets. One of the prizes for 100 tickets is that students can be taken out to lunch by the Principal. Our "Beekeepers" are kept busy every Friday afternoon, when they open the Beehive for eager shoppers.

### New Staff

This year we welcomed 3 new staff members, who are already making a difference in our school. They have also attended their first sports days. Pictured at the sports are Mr. Derek Hayman, our Chaplain, Mrs. Carly Hawthorne who is our ICT specialist and Miss Hollie Woodman, our Grade 2 teacher.

### Playgroup:

The playgroup runs on Fridays from 9 - 11 a.m. Recently the playgroup has had some theme days. They made Easter Biscuits and coloured Easter pictures. Recently, they had a green day. They had green snacks such as grapes and green cup cakes. They also read "Where is the Green Sheep?" They made green shamrocks and dressed up in green hats. The photo is our playgroup on green day.

## Kurnai College Junior Campus



### Passionate About Fitness

Reece Malcolmson and Josh Garth, Physical Education teachers at the campus, are both passionate about living a fit and healthy lifestyle, and they want to pass on to the students at Kurnai that passion. They have instigated an after school program called "Fun and Fit" which operates two days a week.

The aim of the program is to promote and develop a pride in being fit, coupled with the knowledge of how to live a healthy lifestyle.

There is a real emphasis on having fun while getting fit, so that a healthy lifestyle becomes a life time involvement. Reece and Josh believe that starting young, in a group setting, will prove to have real benefits.

Activities will include cardio-vascular fitness, building body weight and core strength, kick boxing, boxing, skipping, Pilates, and medicine ball work.

At this stage each participant pays \$5 per session, but Principal Nello Carbone is applying to FRRR for a grant to help subsidise the program for students so that cost is not an issue for participation.

If your child would like to be involved with this program you can ring the school on 5132 3700 and register, or for further information you can ring Reece on 0402 053 441 or Josh on 0400 653 719 direct.

### Music At Kurnai

The school band competition in Mount Gambier is on again in the first week of May.

Kurnai's Big Band is ready and eager to compete. Last year was the first time the school participated and the students learnt a lot, and this year are wanting to improve their performance in the second experience.

This year a third more students are attending much to the pleasure of the music staff, Joseph Bonnici, Ian Hopkins and Chris Gretton.

To make it less of a financial burden for each student, the musicians have been fund-raising outside Woolworths, raising

over \$1000, but they need more.

So they are appealing to everyone to donate old vehicle batteries and aluminium cans.

These can be deposited at the Kurnai Music Trailer near the front of the school (batteries) or the bin near the front entrance (cans) on Monday 23, Tuesday 24 and Friday 27, April from 7.45am-12 noon.

The students going to Mount Gambier are excited and have been diligently practising for two nights each week after school. This will continue through the school holidays so they are ready.

There are over 100 students altogether attending music classes at Churchill Junior Campus.

These students actively participate in bands, classes, and the College Idol Competition which concludes at the end of Term 2.

### Cuppa With The Principal

Principal Nello Carbone will be inviting different groups of parents to come and have a cuppa and a chat with him and Assistant Campus Principal Nicole Pryor, about how they see the school. They want to learn about the good and the bad things as these parents see them.

Nello considers this a way to develop growth in a pro-active approach to see greater input from a wide range of parents. 'Community involvement' is being targeted by Kurnai College as an area where further works needs to be achieved, and this 'cuppa with the principal' is seen as a way of actively listening to, and achieving feedback from the parent community.

### Parents and Friends

This informal gathering on a monthly basis is another important avenue for the community voice to be heard.

The meetings encourage any interested parents to attend, to talk about the school in general.

It is an opportunity for parents to ask for any clarification of issues which have arisen, or which they have heard about and of which they are unsure.



Nello believes this valuable feedback/clarification avenue is essential to promote good relations between all parties and to provide a forum whereby community concerns can be heard, and things valued by the parents can be noted and built on.

## Gippsland Education Precinct

For the first time in several years the whole of Kurnai College, (Morwell campus, Churchill campus and GEP campus), were represented in a whole day event together - the school swimming sports. It was a great success for all involved, not just due to the fantastic weather we experienced at the Moe pool but also the involvement and camaraderie of both students and teachers.

Students competed in an array of different events, both standard swimming events as well

as a range of novelty swimming events, such as the teacher and student lilo race and the money scramble . The mixture of events enabled many students to participate.

In the standard swimming events, many school records were broken. Congratulations to Tom Morrison and Shannon Van Sanbeek who were the senior male and female champions for the day, and Blue House who were the overall winners for the day. The school houses took the cheering very seriously and made sure that their teams were both the loudest and the best dressed.

Well done to the organisers and also to everyone for getting involved and making it a great day. We look forward to the upcoming athletics sports.



Proudly sponsored by





## Lumen Christi Primary School

### Sport

Sport has been high on the agenda at Lumen Christi over the month of March.

The extraordinary rainy weather played havoc with our preparation, but our school athletics day was eventually able to go ahead as planned, despite a rain delayed start.

Our students had been divided into colour

teams and worked through track and field events.

The long distance run proved to be quite a challenge for some and, unfortunately, we did not get to do our relays.

But this was all just a pre-cursor to the Yinnar and District Athletics' Day.

Heavy rain caused problems with

preparation for the Inter-School Athletics' Day, but the following day dawned bright and promising.

A major hiccup with bus transport meant that our students arrived late at the Yinnar Recreation Ground but soon managed to catch up with other schools.

The sun shone brightly and students

competed in shot put, discus, long jump, high jump, sprints and long distance.

Standards were set and students may have gained one, two or three points for each of the events, depending on what standard was met.

A tally was made throughout the day and after the relay results were announced, Lumen Christi came sixth overall.



### School Leaders and Russell Northe

On Tuesday March 6, Russell Northe attended our morning assembly to present letters of congratulations to our new School and Vice Captains; Georgia Hutchinson, Michael Molinari, Cameron Bianconi and Corey O'Shea. He spoke to the students about the qualities and responsibilities of being a leader and how valued young leaders are. We are very proud of our students and look forward to working with them throughout the year.

### Learning Club at Lumen Christi (Better known as TLC)

This year Lumen Christi is one of five Latrobe Valley schools that are lucky enough to be a part of this wonderful initiative between the Smith Family and Monash University.

This semester as part of the Diploma of Education, Monash University students work with students from the schools to improve their learning.

It is a terrific opportunity for both the school and the Monash students.

The students have the opportunity to design, implement and evaluate a program that they have planned with the children in their group.

The parents of the participants have completed a profile of their child so that they can be matched with a Monash student; children have then been grouped by ability and interest and we have our brilliant library/technology centre to hold it in.

The atmosphere during each session has been wonderful and the enthusiasm of the Lumen Christi students (and the uni students) about being in the program is quite amazing.

We have 35 students currently on the program and already have a list of other children who would like to be involved in second semester.

The excitement is growing!!

Many thanks to the

Smith Family and Monash University for making this possible for our students.

### Jessica Middlemiss

Hi my name is Jessica and I am currently completing year 12 VCE at Kurnai College GEP campus.

I have a school based apprenticeship in business admin which lets me help Debbie in the office at Lumen Christi Primary School every Wednesday for the duration of the year.

I am learning lots and I enjoy meeting all the staff and students. I enjoy the work environment and I like the fast paced style of work. I look forward to having a good year at Lumen Christi.

### First Reconciliation

On Wednesday night March 21, seven children from the parish of Lumen Christi made their first Reconciliation. Both Father Hugh and Father Frances were in attendance and it was a lovely evening for the children and their families.

### RSL Visit

On Monday March 26, students from Grade 5 and 6 travelled to the Morwell RSL Club where they were introduced to new material focusing on the Vietnam War.

A review was also made about the First World War and the ANZACS, and what differences there were between the two conflicts.

Audio-visual material complemented the presentation and the students were able to dress in old service uniforms from the Army, Navy and Air Force.

Great interest also ensued upon the contents of the display cabinets and further questions were generated.

The students of Lumen Christi are grateful to the RSL for providing both the transport and the information session, which helped to further enhance the students' knowledge.



## Yinnar Primary School

By Lachlan Hunt  
Grade 6 student

### Bake Sale Day

On March 15, Yinnar Primary School had a bake sale. The Junior School Council organised the whole event. For sale were: Honeyjoys, Frogs in a Pond, Slices, Biscuits and Cupcakes. All the money went to our

sponsor child, Thaibiso. Thaibiso is a 14 year old boy who lives in South Africa. The Bake Sale raised \$351.50.

### House Fun Day

The Yinnar Primary School House Captains organised a fun day on March 16. The whole school was involved in some great activities. The activities were: Art, Cooking, Sport and

Science. All the students rotated through the activities in their house groups. The day was loads of fun and the students all got to know their house captains and fellow house members.

### District Sports Day

On Thursday March 22, the District Sports were held at the Yinnar Oval. There were eight schools competing on the day. The events

included High Jump, Long Jump, Sprints and Shotput.

The weather was perfect for sports day and all the schools enjoyed the day. The tiny school of Yinnar South were the winning school on the day, followed closely by Yinnar Primary and then Boolarra. Well done to all schools involved.



*Russell Northe proudly supports  
Churchill and District Schools.*



**Russell Northe** MLA

Member for Morwell

Authorised by Russell Northe, 66 George St, Morwell VIC 3840



## Garage sale held at the Jeeralang North Hall

The Garage Sale Fundraiser held on Saturday, March 3 by the Jeeralang North Hall Community Committee was a very successful event. Nineteen stall holders armed with a large range of goods for sale braved the cold and wet day, and many people attended. The sausage sizzle proved popular as was the hot tea and coffee. The raffle was well supported with three great prizes, thanks to their sponsors Bunnings of Morwell and Traralgon Timber and Hardware. Future events include a Family Movie Night and a Thermomix Demonstration. Check out the website [www.jeeralangnorthhall.com.au](http://www.jeeralangnorthhall.com.au) for more information.



## Churchill Town Safety Group

Contact the Churchill  
Town Safety Group  
to report local Safety &  
Security Issues



In person: Shopping Centre Management Office  
- Marina Drive

In writing: PO Box 191, Churchill 3842

Email: [ctsgrp@gmail.com](mailto:ctsgrp@gmail.com)

Report Faults & Hazards to  
Latrobe City Council  
1300 367 700



FOR EMERGENCIES, RING 000

# Looking Back... Looking Back...

...through the eyes of local residents

Copies of  
Volumes 1 and 2  
still available!



## An Oral History of Churchill & District

Volume 3

A Collection of Stories

Written by Ruth Place

&

Edited by Val J. Prokopiv

### Order Form

I would like ..... copies of Looking Back - Volume 3 at \$15 each

Please mail my copy(s) to:

Name ..... Telephone .....

Address ..... Postcode .....

**Payment must be sent with order.** Please add \$3.00 per copy for postage and handling.

Cheques made payable to the Churchill & District News.

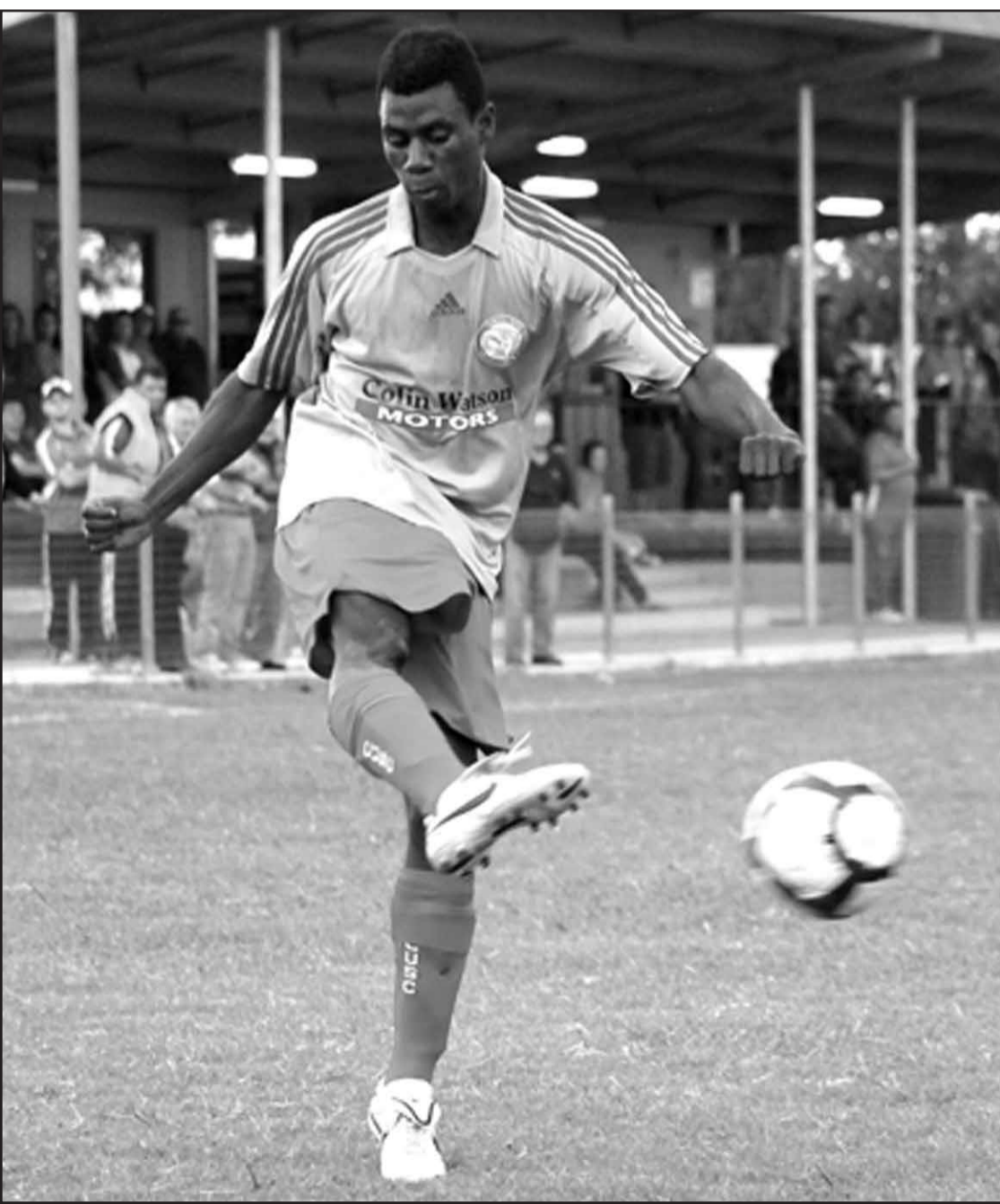
Return form to PO Box 234, Churchill, 3842.

Books can be purchased from:

Churchill Post Office, Monash University Bookshop, Churchill Neighbourhood House, Morwell Newsagency and

Gippsland Trades & Labour Council, 8 - 10 Elizabeth Terrace, Morwell Tel: 03 5133 7684 (Cash or Cheque only)

Delivery / Collection can be arranged by Tel: 03 5122 1961 or 0411 053 546

**Rams prevail in war of attrition**

Churchill United made it through to the Battle of Britain Cup final for the first time since 2007 with a last man standing 2-1 win over Traralgon Olympians on Sunday afternoon.

In the first half Churchill controlled most of the play breaking the lines with strikers Jesse Kennedy and Kwaku Dade proving hard to control but both players spurned chances to score.

Mid way through the half the Rams went ahead when wingman Dean Pyle hit the cross bar with his shot from outside the box which then fell to Captain Jamie Robson who confidently headed the ball into the back of the net.

Olympians began to find the feet of strikers Tony Pardo and Frank Albanese late in the half and just before the break the duo were in the action for the Blues to pull level 1-1.

Pardo's headed attempt at goal was saved by Rams keeper Jason Sands but he parried the ball to Albanese who coolly finished.

In the second half Churchill lost their drive as Anthony Collins, Kenny Higgins and Clayton Bell began to impose themselves on the match.

Albanese almost made it 2-1 for

Olympians but Sands was equal to the task saving a sharp attempt at goal.

Both sides used their full accompaniment of substitutions with Dade, Pyle and Nathan Osborne all succumbing to injury for Churchill not long after the break.

Rams striker Luke Cheney was clearly struggling with injury soon after his introduction and was joined in the walking wounded for Churchill by Aidan Huizer, Tim Dawson and Kennedy, but with all substitutions used they were forced to grind the match out.

Olympians poor discipline delivered two red cards late in regular time with Bell and Pardo both given their marching orders for second bookable offences.

As the match entered extra time the nine men Olympians attempted to defend grimly, aiming for the penalty shoot out that would follow should the match remain all square.

However, two minutes into the second period of extra time Churchill had the winner 2-1 when Cheney beat his marker to meet a long ball from Robson with a magnificent diving header.

from Page 1...

## Come 'n' Try Tennis Day

CHURCHILL & DISTRICT NEWS



## Churchill & Monash Golf Club Ladies Clinics

By Jill Beck



Recently seventeen ladies attended golf clinics organised by Churchill & Monash Golf Club. A Golf Foundation grant assisted the Club to pay for the professional coaches, Nadene Gole and Martin Clements.

Lady members encouraged the

beginners and provided lunches each day. All the new ladies are now keen to practise and improve their skills. The clinics were successful with all participants declaring they had really enjoyed meeting each other and learning together.

### Golf results

Churchill Monash Golf Club Results

10/3/2012: Mens: 4 BBB Stableford: Winners: S. Wotton(30), K. Garlick (29) 50 pts, Runner Up: W. Peter, J. McCafferty 47 pts, DTL: A. Auld, T. Collins 45 pts, L. Stein, N. Hutchinson 45 pts, V. Monument, G. Blizzard 45 pts NTP: 3rd L. Stein, 12th P. Broadbent, 5th P. Smart, 14th A. Auld.

11/3/2012: Stableford Mens: Winner: G. Blizzard (25) 38 pts, DTL: K. Takanen (10) 35 pts, NTP: 3rd L. Stein, 12th D. Taylor.

11/3/2012: Stableford Ladies: Winner: J. Blizzard (30) 37 pts, DTL: H. Croft (38) 31 pts, NTP: 14th (2nd shot) H. Croft.

13/3/2012: Ladies Stableford: Winner: L. Casey (42) 40 pts, DTL: C. Barnes 38 pts c/b. NTP: 5th (35-45) L. Casey, 14th (0-34) M. Dear. Birdies: M. Dear 14th.

17/3/2012: Mens Par: A. Grade: P. Smart (9) +5, B. Grade: G. Blizzard (25) -1 c/b, DTL: H. Martin, M. Fletcher, G. Hornsby, A. Sharrock. NTP: 3rd R. Madigan, 12th M. Fletcher, 14th R. Dent. Birdies: R. Dent 14th, B. Kilday 14th.

18/3/2012: Mens Stableford: Winner: J. Ambrosini (26) 34 pts.

Ladies Stableford: Winner: M.

McConville (22) 29 pts.

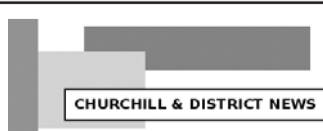
20/3/2012: Captains vs Presidents Day Stableford: Captain Winner: D. Judkins (33) 43 pts, President Winner: L. Casey (40) 40 pts. NTP: 12th D. Judkins, 5th (2nd shot) L. Peake. Birdies: D. Judkins 12th. Silver Spoon Winner: Round 1: D. Judkins 43 pts Winner Captains.

24/3/2012: Mens Stableford: A. Grade: A. Auld (17) 36 pts, B. Grade: P. Shields (26) 42 pts. DTL: C. Hogbin 40 pts, R. Welsh 36 pts, N. Hutchinson 35 pts, P. Smart 35 pts c/b. NTP: 5th J. Banfield, 12th H. Martin, 14th G. Beyer. Birdies: H. Martin 12th, T. Gabbett 12th, R. Welsh 12th, A. Auld 14th, R. Scurlock 5th, G. Beyer 14th.

25/3/2012: Stableford Mens: Winner: P. Williams (19) 36 pts.

Stableford Ladies: Winner: E. D'Alterio (23) 30 pts.

27/3/2012: Mary Mitchell Day: Winner: D. Scurlock Mary Mitchell Trophy: A. Grade: D. Scurlock (16) 40 pts, B. Grade J. Pilditch (34) 37 pts. DTL: D. Judkins (31) 37 pts, J. Beck (29) 36 pts, V. Verheyen (30) 35 pts c/b, NTP: 5th (2nd shot) V. Rowley, 12th A. Hibbert, 9 Hole Competition: C. Ellis (35) 20 pts.



### COPIES NOW AVAILABLE

each month from the front counter **Woolworths Supermarket** West Place Shopping Centre  
Also available from **Churchill Newsagency** Hazelwood Village

## Churchill sporting clubs join forces for a great cause



The Churchill Cricket Club has raised \$12,238 for the McGrath Foundation during its annual Pink Stumps Day event. Last year the club raised \$10,869 which was the highest total achieved by any cricket club in Australia.

This year, the Cobras teamed up with the Churchill Football Netball Club, the Churchill Soccer Club and the Churchill and Monash Golf Club to achieve their target of increasing their fundraising amount.

The clubs primary fundraising effort was to sell polo shirts promoting the McGrath Foundation along with the various Churchill sporting clubs.

The shirts were a huge success and can be seen regularly around Churchill, highlighting the important work of the McGrath Foundation.

Jane McGrath was the wife of former test fast bowler Glenn McGrath. Jane was diagnosed with

breast cancer at the age of 31, when she had only recently arrived in Australia.

The vast majority of her family and friends were half a world away in her native England. It was during treatment for secondary cancer that Jane was offered the assistance of a Breast Cancer Nurse to help support her through the ordeal, answering the many questions she had, and explaining the process in a way Jane could be comfortable with.

Simply knowing what was happening removed much of the fear and allowed Jane to be the wife and mother she dearly wanted to be during that time.

Sadly, Jane McGrath passed away in 2008 but not before making a wish that every Australian woman suffering breast cancer should have access to a Breast Cancer Nurse regardless of their location. The McGrath Foundation is active in

training an army of nurses for Australia's regional areas to help bring Jane McGrath's vision to reality. Pink Stumps Day in Churchill saw all 3 of Churchill's senior teams don the Pink Shirts in lieu of their traditional whites. Following the game, a dinner was held at the club's Andrews Park Social Rooms which was well attended, and included a monster raffle featuring more than twenty prizes kindly donated by generous sponsors.

The following day a large contingent of cricketers, golfers, footballers, soccer players and supporters took to the links at Churchill and Monash Golf Club for a charity round of golf with all proceeds being donated to the cause. The course was immaculate and featured custom made pink flags in each of the holes. Rarely has the Churchill sporting community been so united in such a positive and

selfless way and this effort speaks volumes of the quality of people living in and around Churchill.

### Cobras Take Out C Grade Premiership!!

The Churchill Cricket Club are C Grade Premiers for 2011/12. The side, led by club legend Graham "Grubby" Harvey was never headed in a one-sided Grand Final against Centrals at Jack Canavan Oval in Traralgon. Bowling first, the Cobras had Centrals in all sorts of trouble early, and with some tight bowling and first class fielding, withstood a minor middle order fightback to have Centrals bowled out for just 72. Small totals often prove difficult to negotiate but the Churchill openers Graham Harvey and Steve Warr took an aggressive approach and passed the total in only 12 overs, ensuring an early start to Premiership celebrations.

Churchill had all three senior

grades competing in the finals in what was a great year for the club as a whole, winning the prestigious Traralgon & District Cricket Association Club Championship. With the A and B Grade sides eliminated in the semi-finals it was up to the C Grade team to bring premiership success to Churchill, and they didn't disappoint. Many of the players were playing in their first grand final and nerves were evident during the club's grand final day breakfast. A stirring address from club stalwart Rick White had all the players focussed on the task at hand and the players applied themselves extremely well to win the game convincingly.

Churchill has a great foundation to build upon for season 2012/13 and the club is looking to the further development of its group of talented young players to take the club to the next level and beyond.

## Churchill Football and Netball Club

Churchill Football and Netball Club has had a successful off season, which was kicked off by the hard work of our volunteers, who had several successful working bees throughout the summer that have greatly improved the netball and football change rooms.

We held a successful and well attended jackpot bingo night, and throughout the year holding bigger and better events will be a big initiative.

Onfield sees the addition of two experienced players to the club, Mark Andrews from Yinnar who will be a senior assistant, and Mick Higgins from Morwell East who will help our young side go forward.

The club is also pleased to welcome back Dean Jenkins and Neil Thompson, and also two new young ruckmen in Jake Swanson and Dylan Weir.

Brian Grimes has taken over the position of third's coach and Rob Jellis, after his success last year, has taken on the role of reserves coach.

Churchill have welcomed back previous players and recruited new faces and together everyone has worked hard in the pre season.

On the netball side of things, A grade has one change with Kassie Dear joining the side, and Rachael Paterson will remain as coach for season 2012.

A grade is looking to build on the last couple of years with the group aiming to play finals netball.

The experienced Linda Welsh will be coaching B and D grade and is looking at developing some of our younger players.

Rachell Esler has returned to playing and will take on C grade and is looking forward to the season ahead.

17's will be coached by Stacey Spence who has been working the girls hard in the pre season and has already seen improvement. With a mix of past players and new faces, the girls are all looking forward to the season ahead.

Our first home game is on Saturday April

21, against Rosedale. Come and join us after the game for our first major social event for the year.

There will be a small cover charge on the door, and music will be by The New Black.

The club has launched our new website - [www.cfnc.com.au](http://www.cfnc.com.au) - and this page will be updated regularly with club news, results and general information. Please take the time to stop by and visit!

Our past players association is up and running and we encourage all past players, officials and supporters to get active and register for updates - please go to [www.hccpoa.com](http://www.hccpoa.com) for more information.

CHURCHILL & DISTRICT NEWS

## Calling all Sports Secretaries!

Churchill and District News invites you to send your sports news to us for publication each Month

### Next Publication Date

(Deadline for submission of copy and sport results is the 30th of each month)

Copy and advertising can be dropped off to Churchill Post Office or Churchill Hub

Articles and photos - Email: [cdneditorial@aussiebb.com.au](mailto:cdneditorial@aussiebb.com.au)

Advertising - Email: [cdnadvertising@aussiebb.com.au](mailto:cdnadvertising@aussiebb.com.au)

### FUNCTION ROOM FOR HIRE

Churchill United Soccer Club  
Reasonable Rates

Ideal for:

- ☛ Birthdays
- ☛ Engagements

To Book Call Jenny  
Ph: 5122 2884



# Gippsland Wide

## Palliative Care

**National Palliative Care Week runs from 20 May - 26 May with the theme 'Some things are too important to be left unsaid.... Let's chat about dying'.**

The Latrobe Community Health Service Palliative Care program wants to promote open discussion in our community about the issues of dying, death and bereavement.

Palliative Care is a type of health care for individuals, their families and carers who are facing a life limiting illness. Palliative Care plays a crucial role in

improving a person's quality of life.

Latrobe Community Health Service (LCHS) can provide in home support to adults, children, carers and families living within the Latrobe City area.

"LCHS has a dedicated Palliative Care team that provides up to date best practice nursing," said Helen Whitby, Acting Manager Ambulatory Care.

The Palliative Care team work closely with the client's GP and other services that might be involved in their care.

"Our team provides a service that empowers

clients, carers and their families with up to date information, symptom management and resources. "Because everyone's situation is unique, we provide a service that is based on individual needs," said Helen Whitby.

"We do this by developing a care plan that ensures we provide the most appropriate care and support".

LCHS has an after hours on call service that ensures clients, carers and family members have 24 hour contact and support. This includes evening, weekends and public holidays.

For more information about Palliative Care at LCHS,



Palliative Care Nurse Stephanie Giardina

## Cautious with cannabis

**Latrobe Community Health Service runs a Cannabis awareness education program across the Latrobe Valley throughout the year.**

Cautious with Cannabis is a free, two-hour education program about cannabis, its effects and the strategies to reduce potential harm.

The program will be valuable to anyone who wishes to know more about cannabis and strategies which can help them reduce the harms, cut down or stop using.

Cautious with Cannabis dates:

- Tuesday 15 May**  
■ WARRAGUL 1pm - 3pm
- Wednesday 13 June**  
■ MORWELL 6pm - 8pm
- Tuesday 17 July**  
■ SALE 1pm - 3pm
- Tuesday 14 August**  
■ WARRAGUL 1pm - 3pm
- Wednesday 12 September**  
■ MORWELL 6pm - 8pm
- Tuesday 16 October**  
■ SALE 1pm - 3pm
- Tuesday 13 November**  
■ WARRAGUL 1pm - 3pm

For more information phone an alcohol and drug clinician at Latrobe Community Health Service on 1800 242 696.

## Breathe easier this winter



**As we come into the winter months, it's preparation time. Latrobe Community Health Service (LCHS) has a Respiratory and Asthma Nurse who can assist people with a number of services.**

People should be getting their flu vaccines and checking with their doctor if they need a pneumonia vaccine. Asthma puffers also need to be checked in case their expiry date is coming up.

The LCHS Respiratory and Asthma Nurse can assist people who use nebulisers with getting them serviced before winter so that the filters are clean and the pump is pumping at the correct force.

Nebulisers also need to be checked to ensure there is no splits in the tubing and that masks are a correct fit and are not damaged in any way. "Preparation and planning can help prevent a crisis situation such as a hospital admission", said Pam Hicks, Respiratory Clinical Nurse Consultant.

LCHS can assist with reviewing Asthma and/or Chronic Obstructive

Pulmonary Disease (COPD) plans.

This is important because having an action plan will help people identify the worsening signs and symptoms of their respiratory condition and how to treat them.

The Respiratory and Asthma Nurse works on the following days:

- **Monday** Traralgon Office
- **Tuesday** Moe Office
- **Wednesday** Morwell Office

To find out more information or to make an appointment time please call Latrobe Community Health Service on 1800 242 696.

# What is Palliative Care and how can it help you?

Palliative Care helps individuals who are facing a life limiting illness, as well as their families and carers. Palliative care plays a crucial role in improving a person's quality of life.

Latrobe Community Health Service provides in home support based on the individual needs of clients, carers and their families with up to date information and resources.

**After hours service** ensures clients, carers and family members have **24 hour** contact and support which includes evenings, weekends and public holidays.



If you would like further information on Palliative Care please contact Latrobe Community Health Service on **1800 242 696** or visit [www.lchs.com.au](http://www.lchs.com.au)