

CHURCHILL & DISTRICT NEWS

Est. 1966

Distributed Free

Fr Bob's Farewell
- Page 6

Gardening Group
- Page 10

Model Aero Club
- Page 15

Idigenous Garden
- Page 24

Golden Wedding Celebration



The surprise celebration of Zelma and Bob Mildenhall's 50th wedding anniversary occurred at the Jeeralang North Dance, held, since the Black Saturday fires burnt the hall, at the Hazelwood North Hall.

Bob and Zelma, along with Hans Dortman, have been on the committee organising these dances for many years; Zelma and Bob for 48 years, and involved for two before that.

So it was on Friday 22nd July, that everyone was dancing to the music of Ken and Alice Rae when the Mildenhall's family rushed through the door and shouted "Happy Anniversary!".

The family had secretly arranged with the Raes that they would attend unbeknown to their parents and surprise them. That they did, giving much pleasure to other dancers who were also in the know, as the family greeted each parent warmly.

There was Wendy and Chris and their children, Sam and Laura from Bendigo, Alison, Mark and their family, Douglas and Oliver from Albury, Howard and Denice with Hayley and Scott, Rose from Perth. (Her partner Larry was unable to come), and Neil also from Perth (his partner Melanie was also unable to attend).

At supper time Zelma and Bob cut two anniversary cakes, a chocolate one for Bob and a carrot one for Zelma, their favourites.

They were also persuaded to do a small round of the anniversary waltz.

Thanks were expressed to family and dance friends, and speeches by the family showed their love and pride as well as admiration for attaining such a milestone.

Bob exclaimed that the day he was married was the happiest day of his life. He also proudly said "What a family I have!"



Churchill & District News Proudly
Supported By

 **MONASH** University

 **International Power**
Hazelwood

 **Latrobe City**
a new energy

DAINBRIDGE NICHOLSON FINANCIAL SERVICES

Accountants, Taxation and
Financial Services

Phone: 5122 2033

Fax: 5122 2733

Email: kim.dainbridge@bigpond.com

Churchill & District News

Editorial

The Churchill and District News is a community newspaper staffed by volunteers.
 The Team:
 Team Leader/Secretary : Ruth Place.
 Treasurer: Val Prokopiv

Editors: Bea Stallbom, Carol Scott.
 Advertising: Ruth Place, Peter Prokopiv.
 Layout/Design: Val Prokopiv, Tracey Burr, Allan Larkin, Carol Scott, Ruth Place.

Webpage: Val Prokopiv
 Proof Readers: Ruth Place, Olivia Jackson, Geraldine Larkin.
 Photography/Computer Support: Matt Prokopiv
 Team Members: Wendy Brown, Charlie Rawlinson.

Contributions

The deadline for the submission of articles and advertisements for the September 2011 edition is August 30, 2011.

Articles for publication and letters to the Editor can be sent to: Churchill & District News PO Box 234, Churchill, 3842 Or Email: cdnews@dcsi.net.au	All articles must be submitted by the 30th of each month for publication in the middle of the following month. Advertising enquires can be addressed to:	Peter Prokopiv Churchill & District News PO Box 234, Churchill, 3842 Tel: 03 5122 2589 or 0402 406 376
--	---	--

Articles can be left in our Drop Off Boxes Located at:

Churchill Post Office, Churchill Hub and

Co-Operating Church, Williams Avenue

ADVERTISING RATES

Full Page:	\$280.00	26cm x 8.5cm	\$125.00	All
Colour:	\$495.00	11cm x 14.5cm	\$90.00	prices
Half Page:	\$215.00	11cm x 8.5cm:	\$50.00	include GST.
Colour:	\$300.00	7cm x 6.5cm:	\$35.00	Inquiries Tel:
19cm x 14.8cm:	\$125.00	11cm x 4cm:	\$35.00	Peter on 5122 2589

Webpage: www.cdnews.com.au



Disclaimer

The Churchill and District News wishes to advise that the views or remarks expressed in this publication are not necessarily the views of the Editor or the Management Team and no endorsement of service is implied by the listing of advertisers, sponsors or contributors.

THE CHURCHILL & DISTRICT NEWS IS PRODUCED UNDER THE DIRECTION AND CONTROL OF THE CO-OPERATING CHURCHES OF CHURCHILL. THE CO-OPERATION IS MADE UP OF THE ANGLICAN, UNITING AND CHURCHES OF CHRIST.

The Co-Operating Churches in Churchill

Trivia & Fun Night

**Where:
1 Williams Ave,
Churchill**

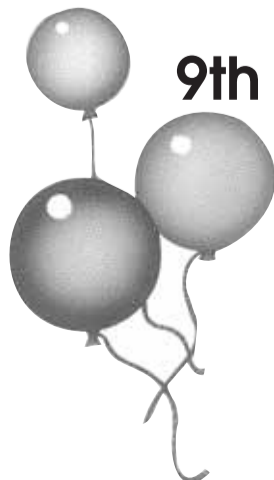
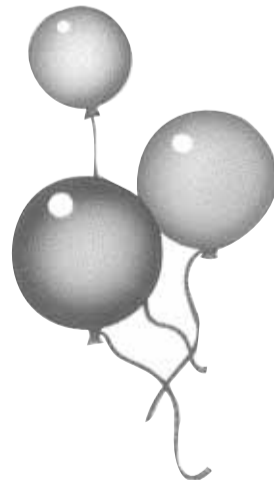
**Time:
7.00 pm**

**Date:
Friday
9th September 2011**

Cost: **\$5.00** per person
\$15.00 Family

BYO Nibbles
Supper Provided

For Bookings phone: **Ruth: 5122 1961**
Glenda: 5166 1819
Robyn: 5166 1306



Coalition rebate on water efficient products

The Coalition has doubled rebates on water-efficient products for all Victorians.

The Victorian Coalition Government has boosted rebates on water-efficient products, and made them available to all Victorian households from July 1, Deputy Premier and Member for Gippsland South, Peter Ryan said today.

Mr. Ryan said the Victorian Coalition Government had doubled funding for rebates on water-efficient products to \$40 million over the next four years.

“Rebates for water-efficient products are now available to help all Victorians – including those on non-reticulated systems,” Mr. Ryan said.

“The decision to extend the rebate to all households, not just those in areas with reticulated water supplies, has removed a long standing anomaly.”

“These rebates will help all

households make great savings through the installation of a rainwater tank or by purchasing water-efficient appliances.”

Mr Ryan said up to \$1000 is available for rainwater tanks that are designed and manufactured to Australian standards and connected to a house’s toilet and laundry.

“Rebates are also available on a new range of appliances including washing machines and pool covers,” Mr. Ryan said.

“There is a \$150 rebate for those who install the most water-efficient washing machines and \$200 on the cost of pool covers.

“These are great incentives to help us become smarter with our water use.”

For more information about rebates available under the Living Victoria Water Rebate Program, contact your local water authority or visit www.water.vic.gov.au/rebates.

Free travel for Seniors

Deputy Premier and Member for Gippsland South, Peter Ryan, encourages seniors throughout Gippsland to make the most of the activities scheduled for this year’s Seniors Festival, and the special offer for free travel on designated days.

Mr Ryan said the 2011 Victorian Seniors Festival, which is held from 2nd to 9th October, would feature over 1000 free and low cost events.

“The Seniors Festival is a great opportunity for people to enjoy the many events that are available at both regional and city locations,” Mr Ryan said.

Mr Ryan said the Festival would include concerts, theatre, poetry, dance, sporting events, guided walks, seminars and other events designed for seniors.

To make the Festival more accessible, Mr Ryan said Victorian

Seniors card holders would be able to access free public transport during the Festival.

“I know many residents in Gippsland like to make the most of the events on offer during the Seniors Festival, and the offer of free public transport is an important drawcard.”

Free public transport for Victorian Seniors card holders is offered between 2nd to 9th October. Free travel on V/line services is available for specific dates and can be booked on Tuesday 6th September from 10am, on 136 196 or via the website at www.viclink.com.au

The full Festival program will be available from 22nd August from councils, libraries, neighbourhood and community houses and all Coles outlets.

Further information is available at www.dpcd.vic.gov.au/seniors/seniors-festival.

2011 Victorian
Seniors Festival

Be Inspired
2-9 October 2011



SUPER TUESDAY ENTERTAINMENT

Tuesday 13th September
KINGSLEY KOONWHYE
Tuesday 11th October
MARCEAU CAMILLE

Seniors 2 Course Lunch & Show - \$12.00
Show Only - \$6.50
Lunch: 12noon Showtime: 1.30pm

Italian Australian Club

499-501 Princes Drive, Morwell
Phone: 5134 3541

www.italianaustrianclub.com.au

Princes Freeway at Morwell to reopen soon

The Princes Freeway at Morwell will be reopened – weather permitting – in time for the September school holidays, Acting Minister for Roads and Minister for Energy and Resources, Michael O'Brien said today.

Speaking after a meeting with the local Emergency Management Team – which has been working hard over recent months to resolve the issues causing the road's closure – Mr O'Brien said the road reopening would benefit local residents, business and the tourism industry.

"Expert advice is that the Princes Freeway at Morwell will soon be safe to reopen," Mr O'Brien said.

The reopening will be subject to ongoing compliance with safety standards. A Traffic Management System will be in place should the freeway need to be closed temporarily as a precautionary measure in response to ground movement or heavy rainfall.

VicRoads will prepare a Traffic Management Plan for this purpose, which will include the use of electronic message signs.

"This is great news for Gippsland motorists, businesses, residents and visitors to the area, and I want to thank them for their patience and cooperation so far, and in the coming weeks," Mr O'Brien said.

"We understand how important it is to the community and region to reopen the road as soon as it is safe to do so, and that is what we've been working towards for months.

"This has been an extremely complex and challenging situation, and I would like to thank everyone involved in getting us to this point, especially Superintendent Tess Walsh and the members of the Emergency Management Team."

Mr O'Brien said the freeway would be open to traffic from late September at its designated 110 km/h speed limit, once additional safety and water control works are completed.

"Weather permitting, it is expected those works will be complete by the school holidays which start on 24 September," Mr O'Brien said.

"Once they are finished, the Princes Freeway will

be able to be reopened and traffic will no longer be diverted through the city of Morwell along Princes Drive."

A stretch of the freeway has been closed since 10 February this year, when heavy rain led to the creation of sinkholes and ground movement in the area.

Since then a range of mitigation measures have been introduced by International Power Hazelwood, including the drilling of 50 horizontal drains at the base of the mine area, to drain more water away from the area of instability. A range of geotechnical studies and surveys were undertaken to better understand the reasons for ground movement and how to prevent it.

Mr O'Brien said the latest advice from geotechnical experts is that mitigation efforts have been effective.

Mr O'Brien said VicRoads will immediately commence works on:

Lining of the 300 metre central median along the currently closed section of the freeway; and

Other strengthening works including injecting grout into underground holes.

"The monitoring of ground movement around the freeway area will continue, even after works are completed and the road reopened to traffic," Mr O'Brien said.

"Around the clock monitoring of the freeway will detect any change which may result in the need for a temporary closure in the future."

Mr O'Brien said work would continue to finalise the longer-term solution for the use and design of the Morwell Main drain, to prevent as much as possible more water entering the area of instability.

"The engineering problems relating to the Morwell Main Drain are highly complex, and the Department of Primary Industries is continuing to work with International Power Hazelwood on the solution," Mr O'Brien said.

"The Victorian Coalition Government remains committed to repairing the Morwell Main Drain, which will remove the need for precautionary road closures.

"The Coalition Government has taken a careful approach to this issue based on expert advice.

Grants and Rebates available

There are currently a number of grants and rebates available which may be of interest to you, your friends and neighbours.

Firstly, yearly Ambulance Victoria membership fees have been slashed from 1 July 2011, to make ambulance membership more affordable.

Membership costs will drop from \$150 to \$75 a year for families and \$75 to \$37.50 a year for singles – that is just 20 cents a day for families and 10 cents a day for singles.

In the event of an emergency, Ambulance Victoria members do not have to pay transport costs which can exceed \$900.

To treat and transport patients in emergencies is an expensive exercise. With 100 per cent cover, and 50 per cent off, there is now simply no reason to risk being caught without Ambulance Victoria membership.

Also from 1 July, rebates on water-efficient products have been doubled, and made available to all Victorian households including those on non-reticulated systems to become water efficient in their homes and gardens.

Up to \$1000 is available for rainwater tanks that are designed and manufactured to Australian standards and are connected to a house's toilet and laundry.

Rebates are also available on a new range of appliances including washing machines and pool covers.

Washing machines are one of the biggest water users in the home and this \$150 rebate provides the incentive people need to install the most water-efficient models.

A rebate of \$200 has also been introduced for the first time on the cost of pool covers.

We need to be smarter with the use of our water in our towns to make the most of every drop in our homes and gardens.

For more information about rebates available under the Living Victoria Water Rebate

Program, contact your local water authority or visit www.water.vic.gov.au/rebates.

I'd also like to encourage members of the Churchill

and district community to enter the 2011 Fire Awareness Awards.

The awards recognise the hard work of individuals, groups and organisations in fire projects across Victoria and provide an important opportunity for people to share their contribution, expertise and experience.

These awards are open to anyone involved in projects that aimed to reduce the frequency, severity or impact of fires anywhere in Victoria. After the devastating impact the Delburn and Churchill Complex fires had on our community, I am sure there is a number of individuals and groups who have some great ideas on increasing community safety.

Projects could cover any fire type, including home and building fires and bushfires.

To be eligible, projects should focus on fire safety, awareness, prevention, response or recovery. Entries close at 4pm on Friday September 30, 2011. To enter or find out more, visit: www.fireawarenessawards.com.au or phone (03) 9412 4465.

I'd also like to remind the community that a community consultation paper is currently open for the design and implementation of a fairer, more equitable system to fund fire services in Victoria.

This consultation paper was the first step in introducing a significant and long-overdue reform to ensure Victoria's fire services were appropriately funded.

A new levy will be introduced that ensures all property owners and local businesses pay a fair contribution to the state's fire services, while ensuring Victoria's fire services continue to operate with sufficient resources.

I encourage all interested community members to read the consultation paper and make a submission to inform the final design and implementation for the new FSL.

The consultation paper is available at www.dtf.vic.gov.au, and submissions close on 30 September 2011.



2-5 SASKIA WAY,
MORWELL

Contact: Scott McGill
☎ 03 5134 2100

- AFTER MARKET ACCESSORIES
- WHEELS & TYRES
- VEHICLE PREPARATION
- FABRICATION
- DRIVELINE CONVERSIONS



Bendigo Bank

Churchill Newsagency

Shop 2, Hazelwood Village Shopping Centre

Churchill VIC 3842

Phone: 5122 1241

Fax: 5122 3741

Email: garry.goodman@churchillnewsagency.com.au

Website: www.churchillnewsagency.com.au

Australian
Newsagents'
FEDERATION LTD



NEWSPAPER

Bendigo Bank Agency

The Churchill Newsagency is pleased to advise that they will be operating a Bendigo Bank agency within their store

from Wednesday, August 17

Our Official opening will be held on

Saturday 20 August at 10 am.

All welcome to attend

A free sausage sizzle will also be available on Saturday

Bendigo Bank

@ advantage PHARMACY

We have some exciting
NEW PRODUCTS
so we are blowing out
the current products at
up to 70% off
to make room for the
NEW STOCK!!

Shop 7, West Place Shopping Centre
Churchill

Monday - Friday: 8.30am - 6.00pm

Saturday: 9.00am - 2.00pm

value, savings, choice & advice

Telephone: 51 22 1390



Northe's Natter

Victoria members do not have to pay transport costs which can exceed \$900.

To treat and transport patients in emergencies is an expensive exercise. With 100 per cent cover, and 50 per cent off, there is now simply no reason to risk being caught without Ambulance Victoria membership.

Also from 1 July, rebates on water-efficient products have been doubled, and made available to all Victorian households including those on non-reticulated systems to become water efficient in their homes and gardens.

Up to \$1000 is available for rainwater tanks that are designed and manufactured to Australian standards and are connected to a house's toilet and laundry. Rebates are also available on a new range of appliances including washing machines and pool covers.

Washing machines are one of the biggest water users in the home and this \$150 rebate provides the incentive people need to install the most water-efficient models.

A rebate of \$200 has also been introduced for the first time on the cost of pool covers.

We need to be smarter with the use of our

water in our towns to make the most of every drop in our homes and gardens. For more information about rebates available under the Living Victoria Water Rebate Program, contact your local water authority or visit www.water.vic.gov.au/rebates.

I'd also like to encourage members of the Churchill and district community to enter the 2011 Fire Awareness Awards. The awards recognise the hard work of individuals, groups and organisations in fire projects across Victoria and provide an important opportunity for people to share their contribution, expertise and experience.

These awards are open to anyone involved in projects that aimed to reduce the frequency, severity or impact of fires anywhere in Victoria. After the devastating impact the Delburn and Churchill Complex fires had on our community, I am sure there are a number of individuals and groups who have some great ideas on increasing community safety.

Projects could cover any fire type, including home and building fires and bushfires. To be eligible, projects should focus on fire safety,

awareness, prevention, response or recovery. Entries close at 4pm on Friday September 30, 2011. To enter or find out more, visit: www.fireawarenessawards.com.au or phone (03) 9412 4465.

I'd also like to remind the community that a community consultation paper is currently open for the design and implementation of a fairer, more equitable system to fund fire services in Victoria. This consultation paper was the first step in introducing a significant and long-overdue reform to ensure Victoria's fire services were appropriately funded.

A new levy will be introduced that ensures all property owners and local businesses pay a fair contribution to the state's fire services, while ensuring Victoria's fire services continue to operate with sufficient resources.

I encourage all interested community members to read the consultation paper and make a submission to inform the final design and implementation for the new FSL.

The consultation paper is available at www.dtf.vic.gov.au, and submissions close on 30 September 2011.

"Business Series Seminars 2011"

"GREEN YOUR BUSINESS - GROW YOUR BUSINESS" Seminar: When: Tuesday 23 August, 5:30pm - 8:00pm, Where: Latrobe Regional Airport, 75 Airfield Road, Morwell. Cost: \$20.00 per person.

This Seminar offers an alternative way to view your business, allowing you to capitalise on your achievements, save money and the environment, and offer better solutions to a growing market of environmentally aware customers.

Participants can expect to leave this seminar with a clear understanding of energy efficiency, water conservation, waste reduction and much more. Attendees will also be armed with a whole host of resources and contacts to help you achieve and expand your green business goals.

The LCBTA Inc & Small Business Victoria will be holding two more business seminars in 2011:

* Getting the Right Staff, Tuesday 25 October.

* Keeping the Right Staff, Tuesday 29 November.

To register for these seminars or to find out more information please follow these links: www.lcbta.org or log onto www.business.vic.gov.au

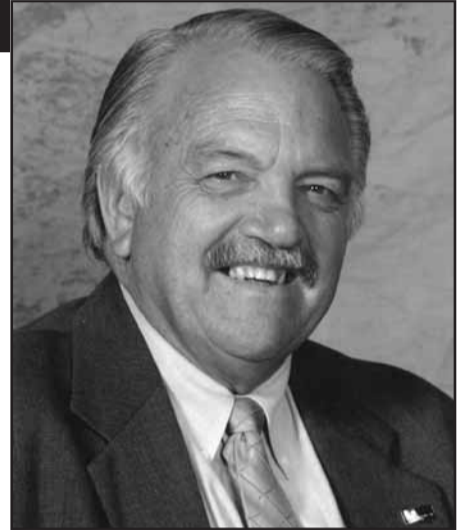
Tarra Bulga National Park new Day Visitor Facilities - Tarra Bulga National Park, near Balook in the Strzelecki Ranges, now has a fabulous new "Day Visitor" facility at Tarra Valley.

Tarra Bulga National Park is Victoria's second oldest National Park and is famous for

its waterfalls, giant Mountain Ash trees, scenic walking tracks, Corrigan's suspension Bridge and fern gullies. It is home to one of the last remnants of the indigenous eucalypt forests which once covered the region.

The completion of new and improved facilities at the Tarra Valley visitor area includes a new toilet block, new picnic shelter, upgrading of the information shelter, paving, picnic tables, landscaping and asphaltting of the carpark area and replacement of the decking on the Corrigan's Suspension Bridge near the Tarra Bulga Visitor Centre.

The Visitors Centre at Balook is open at specified times - check with Parks Victoria. These new and improved facilities were able to be rebuilt thanks to the Commonwealth Government and State Government \$3 Million



Tourism Recovery funding "package" for adjoining areas affected by the 2009 bushfires.

Glengold

PTY LTD

FARM AND INDUSTRIAL MACHINERY

• SALES • SERVICE • SPARE PARTS

Legendary Wacker becomes Wacker Neuson



WACKER NEUSON

Well known for its Wacker Compactor, it now has expanded into Construction Equipment



◆ Compact excavators 1-7 and a half tonne ◆ Skid steer loaders ◆ Rubber skid steer loaders ◆ Mini dumpers



TCM FORKLIFTS

DONALDSON

SOUTHERN CROSS MOWERS

ELI-GRA IMPLEMENTS

Ring about our SPECIALS

Dealers for:-

- ◆ Deutz Fahr Tractors
- ◆ Japanese made Yanmar Tractors
- ◆ Keenan Feed Systems
- ◆ Vicon Hay gear and Schuitemaker Wagons
- ◆ Wacker Neuson Construction Equipment
- ◆ Manitou Telehandlers and Rough Terrain Forklifts
- ◆ Bertolini Spray Units and Pumps, Teeset Parts
- ◆ Househam Self Propelled Spray Units, 200l and larger
- ◆ Spitwater Pressure Cleaners and Spitfire Factory Heaters

Established many years selling New and Used Agricultural and Industrial Equipment Full line of Spare Parts and Lubricants to suit tractors, 4WD, trucks, automotive, construction equipment and fork lifts.

- ◆ Bareco Stockist - All agricultural parts and accessories
- ◆ Agents for Colrain Truck and Trailer Parts, Donaldson Filters and supplier of non-genuine Japanese truck parts
- ◆ Batteries for most Truck, Tractor, Construction and Automotives - charged and ready to use
- ◆ Field servicing of all makes and models.

CATERING FOR SMALL AND LARGE FARMS

95 TRAMWAY ROAD, MORWELL PHONE 03 5134 5588 or Wes 0459 333 737 - Sam 0447 933 737

Latrobe Rockers

The Latrobe Rockers recently held their annual Winter dance at Kernot Hall and again it was a great success.

The Speedsters provided great music for the large crowd in attendance.

Rock and Roll dancers and friends travelled from Central, East and South Gippsland, as well as the Mornington Peninsula and Geelong, to dance the night away.

Our next dance will be the Spring dance with a footy theme, to be held in the Lavalla Hall in Traralgon on the 17 September, featuring the very popular band, Who Was That Cat.

The Latrobe Rockers Gippsland has donated several thousand dollars to local charities and projects over the past few years, from money raised from the dances.

Also, many members participate in dance demonstrations throughout the year at various venues, such as Maryvale Paper Mill Open Day and Nursing homes around the Latrobe Valley.

These demonstrations, which members do on a voluntary basis, are held to encourage people to think of dancing as an alternative form of exercise, and as a way of meeting and socialising with people.

Rock & Roll dance lessons are run by Jo from Valley Rock at the Morwell RSL Anzac room, Elgin Street Morwell each Monday night from 8pm.

For more information about the club and lessons,



see the club web site www.latroberockers.org.au or call 0427 770 159.

Churchill Celebrity Chefs

From the kitchen of Eleanor McWhirr, here's a delicious, nutritious and unusual recipe for pumpkin cookies.

It's a very old family recipe originally given to Eleanor by her Aunt Daphne.

It was copied into her recipe book many years ago by her daughter Marilyn, who was only about eleven years old at the time, and it's from that same book that Eleanor has brought it out to share with us.

Eleanor has lived in Yinnar for the last ten years and for most of that time has been a member of the creative writing class at Churchill Neighbourhood Centre.

As well as writing poetry and stories, Eleanor enjoys creating many types of handcraft — patchwork, quilting, doll making, and designing and producing decorative pin cushions to mention just a few.

Eleanor has four daughters, seven grandchildren,

and eleven great grandchildren.

She is a committed Christian and says she thanks God every day for family, friends and the community in which she lives.



Pumpkin Cookies

2 cups raw sugar
2 cups mashed, cooked pumpkin
1 cup vegetable oil
2 teaspoons vanilla essence
4 cups SR flour
1 teaspoon salt
2 cups sultanas

Combine raw sugar, oil, pumpkin, vanilla essence. Add remaining dry ingredients. Mix well.

Drop tablespoons of mixture on greased oven trays.

Bake in moderate oven for 20 minutes or until golden.

Makes approx 48 cookies.

Churchill & District News

WE ARE OPEN!

Every **WEDNESDAY** 11am - 1pm
at The Co-Operating Churches Williams Avenue, Churchill

Old Time Family Dance

Hazelwood North Hall
Church Road, Hazelwood North
Friday 26 August

Dancing from
8.00 pm to 11.30 pm
Music: **K & A**

Admission: **\$5.00**
Door Prize & Novelties
Please bring a plate for a
shared supper



For more details please ring Zelma Mildenhall 5166 1264



JB COMPUTERS

71A, George St, Morwell 3840 (Opp. Bendigo Bank)
Ph: 5133 7617 / www.jbcomputers.com.au

NEW PC + LCD, \$598

REPAIRS, VIRUS REMOVAL, UPGRADES
LAPTOP AND PC PARTS, NOTEBOOK REPAIRS
UNIVERSAL LAPTOP CHARGER - \$59
TREND INTERNET SECURITY - \$49 (3 USER)
USED PC from \$150, USED LAPTOP \$250

Mid Valley Family Medicine

OPEN ALL WEEKEND

Saturday 8.00am-5.00pm
Appointments necessary

Sunday 9.00am-4.00pm
NO appointment necessary

Bulk Billing
To All Medicare Card Holders

- Open 7 Days -
5134 3888

Shop 59 Mid Valley
Shopping Centre,
Morwell Vic 3840
"Caring Family Medicine"



HEALTH CENTRE

Bulk Billing

- *Family Medicine
- *Women's Health
- *Counselling
- *Minor Surgical Procedures
- *Pathology Service
- *Industrial Medicals
- *Visiting Paediatrician
- *Visiting Physiotherapist
- *Visiting Surgeon
- *Visiting Psychologists

*Travel & Health Immunisations

Consulting Hours

Monday to Friday 8am - 5.30pm
Saturday 8am - 1.30pm
24 hour on call service

Tel: 5122 2555

9a Georgina Place, Churchill, 3842
"Caring Family Medicine"

Church News

Church Times

Lumen Christi Catholic Church
 35 Walker Parade, Churchill
 Tel: 5122 2226
 Father Hugh Brown
 Saturday: Mass: 6.00pm
 Sunday: Mass: 9.00am
 1st and 3rd Sundays:
 Yinnar: Mass: 10.30 am
 2nd and 4th Sundays:
 Boolarra: Mass: 10.30am

Co-operating Churches of Churchill
 Rev. Dr. Bob Brown
 Williams Avenue,
 Churchill.
 Tel: 5122 1480
 Glenda and Ian
 Combridge
 Tel: 5166 1819
 Sunday Service: 9.00am.



Churchill Christian Fellowship
 Maple Crescent, Churchill.
 Sunday: 10.00am
 Ladies Meeting:
 Tuesday 10.00am

Lumen Christi Parish Snippets

St Vincent De Paul Meetings
 We meet on the first Tuesday of each month at 7pm in the evening and the third Tuesday of each month at 9am in the morning. New members welcomed. Contact Lou Van Eyk on 0402 103 136.

Lumen Christi Playgroup
 Lumen Christi Playgroup meets on Thursdays at 9.30 in the Eco Centre and is held fortnightly from 9.30 – 11.30am during the school terms. Contact Kim Parer, 5122 3517.

Ladies Meeting Tuesday July 19
 Many thanks to Judy Woods: a good

roll-up on Tuesday evening. We learned about the research into giving people over the age of 70 an aspirin a day in order to perhaps cut the incidence of heart and stroke problems.

Lumen Christi School
 Congratulations to our new Captains – Liam Antonelli, Sarina Molinari, Zara-Louise Ernst and Dustin Weir. We know they will be great leaders for Lumen Christi.

Please ring Debbie on 5122 2231 if you would like to make an appointment for an interview or tour.

Co-operating Churches Snippets

While the Rev. Bob Brown was on long service leave we welcomed Rev Des Parker as our Supply Minister.

Coffee Connections had as its theme “My Favourite Bible Verse”. Some of those who were present shared their favourites. This then led to some interesting discussions of questions which were raised.

It was delightful to see the church full of young families with children attending for the occasion of two baptisms- Ivy Douglas and Toby Meall.

A wonderful working bee was held during the month with many jobs which needed to be done, completed. This work has helped to spruce up the church in time for the final service and farewell function for Rev Bob Brown, who has been our minister for the last seven years. This was a combined service with both the parishes of Boolarra/Yinnar and Churchill at Churchill at 10am. Several people from Bob’s former Melbourne parishes also attended.

Bob conducted his last service, an Anglican Holy

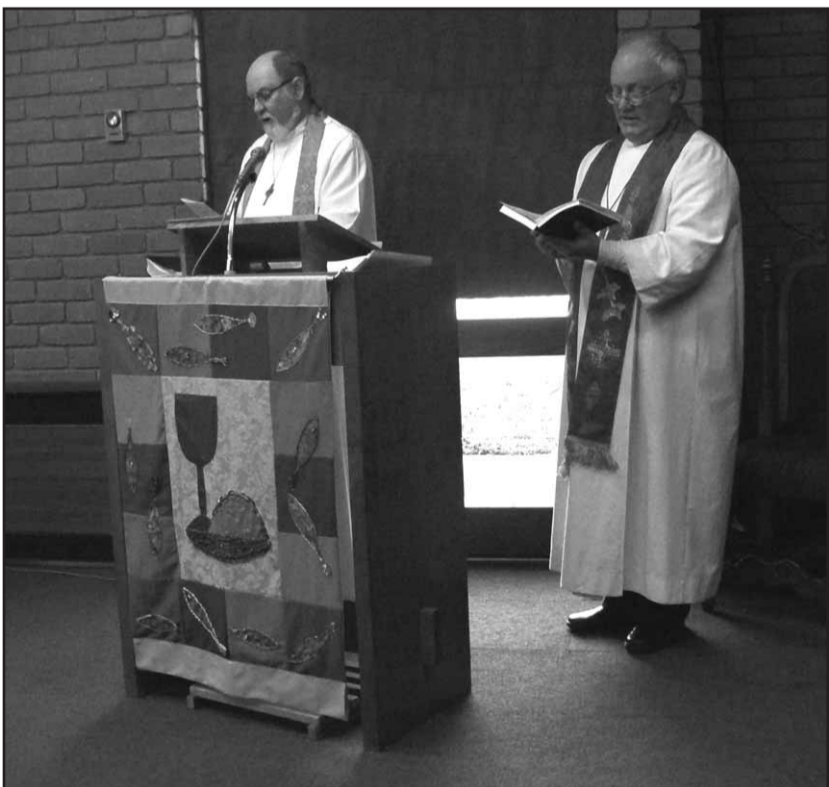
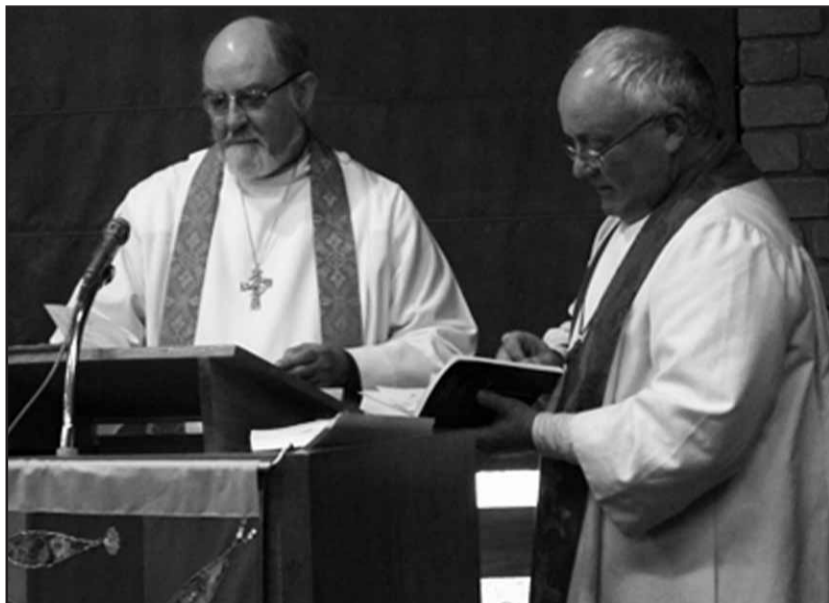
Communion. Rev Tim Angus, who is the Uniting Church Presbytery Minister, conducted the Relinquishing Service. The Churchill Singing Group and the Rosse’s from Boolarra/Yinnar added items to the service.

Following the service there were several speeches thanking Bob for his work with us during the last seven years. Gifts were presented and Bob had the opportunity to respond.

A lovely lunch of foods, provided by the parishioners of both parishes, was then served.

Church Times for Boolarra Yinnar Co-operating Parish

- Week 2 and 5 will alternate UCA and Anglican Holy Communion monthly.
- Week 3 - 10 am at Yinnar - Worship followed by morning tea.
- Week 4 - 11 am at Boolarra UCA Holy Communion followed by lunch.



Bob Browns Farewell Service held on Sunday 31st July at the Cooperating Churches in Churchill. Rev Bob Brown (left) and Rev Tim Angus Presbytery Minister.



Co-Op Church People hard at work at the Co-Operating Churches working bee

Magic & Munchies

Friday 21 October
 A Night of Family Fun
 Co-Operating Churches
 in Churchill

Local award winning Magician

Peter Cook

Skilled in the art of magic,
 Peter will entrall one and all

Cost:

\$10.00 per person
 \$25.00 family
 (2 Adults and 3 children)

Bookings:

Glenda Combridge: ph 5166 1819
 Ruth Place: ph 51221961
 Robyn Mauger 5166 1306

Lucky Ticket Prizes
 & Supper!!!!



Churchill & District Community Association - Streetlight Faults



By Margaret Guthrie

CDCA has noted that numerous streetlights in Churchill have not been working in recent times. Residents have complained about non-working car park lights in the town centre, some of which haven't been 'lit' for months.

Reporting streetlight faults is a shared community responsibility, particularly where the location is in a 'public' place, such as a park or non-residential road.

I recently identified 8 streetlights that were not working on the most direct route(s) to and from the town centre and my home. Only one of these was outside an occupied residence. The others were in non-residential streets such as Monash Way, Canterbury Way East and Phillip Pde.

These lights have been reported as faulty and were promptly attended to.

The Essential Services Commission (ESC) sets minimum standards for fixing streetlights in its 'Public Lighting Code'. Section 2.3 of the Code states that repairs or replacements of standard fittings must be done within seven business days of the fault report.

A copy of the Public Lighting Code can be found on the ESC website at: http://www.esc.vic.gov.au/NR/rdonlyres/1A6CD09E-0DD1-4690-AB75-73482E1C9493/0/RI_FinalPublicLightCodeFollow04ReviewNCM_Apr05.pdf

Streetlight faults can be reported directly to SP-AusNet (the responsible authority) or to Latrobe City Council.

To report streetlight faults to SP-AusNet, telephone 13 17 99 and select the option to

'report a fault'.

Be prepared to wait, as the customer service officer will need to identify the exact location and 'Asset Number' of the pole prior to logging the report.

A works order number is issued at the completion of this reporting procedure and can be supplied to the person making the call.

Alternatively, email streetlight@sp-ausnet.com.au with the location of the faulty light.

A return email will be forwarded to you in about an hour, confirming receipt of your report and a works order number. I found this to be a very satisfactory way of reporting street light faults, as I have home internet access and it required very little of my time to make the report.

Under SP AusNet's Guaranteed Service Levels, if a street light is not repaired within two working days and the light is directly adjacent to a resident's premises, SP AusNet will credit \$10 to the resident's next electricity account.

Council works with SP-AusNet to keep our streetlights working. Information can be found on Council's website at <http://www.latrobe.vic.gov.au/Services/StreetLighting/>

Faults can be reported to Council by phoning 1300 367 700 and making a 'Pathways Request' to have a faulty streetlight fixed. The Customer Service Officer needs to know the exact location of the light being reported and should issue the caller with the 'Pathways Request Order No'.

The best way to identify a streetlight is to report the 'Asset Number' of the pole (if possible). This can usually be found about 2.5 metres above ground attached to the pole - often a yellow and black number, or (less frequently) orange and white, whilst 'older' poles may have a silver 'plate' inscribed with the number. Reporting the pole number makes the trail a little bit easier for those responsible for carrying out the repairs.

Some of the Town Centre lighting has proved problematic to repair, but will be addressed in the new town centre road works (the realignment of Georgina Place).

Currently, there is an underground supply problem for the lights in the central shopping centre car park, which will require either excavation or new cabling (hence the wait for the road works).

The lights along Georgina Place below the service station were installed long ago when street lighting was unmetered and the supply source is no longer known.

Again, the planned road works will address the poor lighting on this footpath area.

In the interim, CDCA is formally advising land-owners and responsible authorities that the lack of adequate lighting in this town centre shopping centre car park (which is provided with footpaths, kerbs, designated car parking bays and light poles intended to light the area for safe use) is hazardous and has the potential to cause injury to users.

Lights in both the 'top' (Ritchie's) car park and the southern (Woolworths') car park should all be working, but can be reported to the Shopping Centre Manager, Rob Whelan, at the office in Marina Lane, or directly to either SP-AusNet or Latrobe City Council.

In these areas, a row of lights may be 'out' because of faulty relay switches or because of timers being stopped due to power failure and then not being reset when power is restored.

Birds (plovers) also cause lighting failure as they like to nest/rest atop poles. Problems such as these are easily rectified once a report on the light fault is made.

CDCA is working closely with Council officers, including the Town Centre Place Manager, Ian Gibson, to address public lighting issues in Churchill.

Our advocacy on this issue has resulted in a complete lighting inspection (or audit) of Churchill public lighting, to be carried out as soon as practicable, by 'order' of senior Council officers.

We are advised that the delay in lighting the Churchill Hub 'drop-off area' is now held up whilst the electricians "wait for AGL to notify them when the meter is installed". The long delays in completing the Phillip Pde 'upgrade' have been frustrating to residents, Hub users and Council officers alike.

CDCA's next meeting is our Annual General Meeting. It will be held at 7pm on Wednesday 24th August at the Churchill Cricket Club in Andrews Park. Sgt. Melanie Hamshere from Churchill Police Station is the guest speaker on the night.

All residents of the Churchill and district community are very welcome to attend.

Proposed 'New Rules' will also be presented to members for adoption and elections for the 2011/12 Committee of Management will be conducted. Our Ward Councillor, Darrell White, has been asked to chair the proceedings.

For more information about CDCA, contact the Acting President, Bruce Stephenson, on 5122 1335 or write to CDCA at PO Box 191, Churchill.

Hard copies of the proposed 'New Rules' are available from Rob Whelan at Shop 16 West Place, Marina Drive, Churchill, or email: alan.scarlett@monash.edu for an electronic version.

Hazelwood House Happenings



Above: Residents enjoying an afternoon outing to the Cafe Escargot in Mirboo north. Well worth a visit.

Bottom: The residents said a sad farewell to Shirley (on piano) and Scott who over the past few months have visited the hostel and taken part in the Wednesday morning sing a long activity.



Concrete never looked so good!



Holcim

Concrete

Holcim supply all size loads from Commercial to Residential and Domestic. We also have an extensive range of colour and exposed concrete.



Technical

Holcim have a NATA accredited technical laboratory based in Morwell.

Aggregates

Holcim supply an extensive range of quarry products from aggregate through to crushed rock and packing sand.



Holcim

formerly Readymix

Concrete

- Morwell
Mick 03 5133 4800
- Leongatha
Alaister 03 5662 3415

Aggregates

- Jeeralang Quarry
Dianne 03 5166 1444
- Tyers Sand
Dianne 03 5166 1444



Neighbourhood Watch

vehicle has now been returned to the owner.

THEFT - 1 for June (2 May) - One offender charged after stealing money from a purse in an office. Thefts of fuel from service stations and vehicles are becoming more common. **MOTORISED MOBILITY DEVICES**

These days being elderly or disabled does not mean you have to be confined to your home. Some of our frail and infirmed citizens have surrendered their driving licenses or simply stopped driving.

This can be due to age or medical problems such as failing eyesight or diminishing reflexes and judgment.

However, they have found they can still get around town using Motorised Mobility Devices (MMDs).

As more of our elderly citizens are taking to the streets in MMDs it is timely to start educating our citizens, clear up a few misconceptions about MMD's and to answer a few questions.

To this end Gippsland Road Safe in conjunction with its partners Victoria Police and Latrobe City Council will be conducting free information sessions to be held at the International Power Traffic School in Morwell. The first session will be on Wednesday 27th of July.

Areas to be covered, are the safe use and maintenance of MMDs and to increase awareness of Road Rules

and safe speeds. The sessions will offer support, training and knowledge sharing to users who suffer an impairment and who are required to use MMDs.

Activities to be conducted include:

Introductory sessions by members of RoadSafe;

Presentations by Victoria Police in relation to defining what is a pedestrian, speed and power limits for MMD's, road rules, safety tips, alcohol and other offences, insurance and what to do in the event of breakdowns;

Presentation from GMS Rehabilitation on how to maintain the device safely and servicing requirements;

Every participant will be provided with a free safety pack including a flag to attach to their device, a pre-safety checklist, a free helmet meeting Australian Standards and a high visibility vest.

For further information on sessions contact Leading Senior Constable Brett Godden. In the meantime, here are the answers to a few of the most commonly asked questions in relation to Motorised Mobility Devices:

Is a MMD a motor vehicle? Generally speaking, no, it is not. A MMD only becomes a motor vehicle if it can travel at more than 10 km per hour or has greater than 200 watts of power.

Can a MMD be registered with VicRoads? No, it cannot as it is not a motor vehicle. However, if your MMD can travel at more than 10 km/h or has more than 200 watts of power then it is a motor vehicle and must be registered. If this is the case you cannot use it on footpaths.

Is the driver of a MMD a pedestrian or a driver of a vehicle? The driver of a MMD is a pedestrian. At law a pedestrian includes: a person driving a motorised wheelchair that cannot travel at over 10 kilometres per hour (on level ground); and a person in a non-motorised wheelchair; and a person pushing a motorised or non-motorised wheelchair; and a person in or on a wheeled recreational device or wheeled toy.

Who can use a MMD? A person can use a motorised mobility device if they are injured or disabled and also if they are unable to walk or have difficulty in walking.

Do I have to have Insurance for my MMD? A motorised wheelchair is not required to have third party insurance.

However, there are public liability policies, house contents and personal effects policies and personal accident policies. Speak to an insurance broker about your choices.

Can I drive my MMD in traffic? NO you cannot. When driving a MMD you are a pedestrian and must travel on the footpath. You must obey

all road rules as a pedestrian and drivers of motor vehicles must treat you as a pedestrian. You must cross a road by the shortest direct route. When crossing at traffic lights you may start to cross on the green light or green man. You must use a footpath where available. If you need to travel on the road you must keep as close to the kerb as possible.

Do I need a licence or medical examination to operate a MMD? No you do not. However you should speak to your GP or occupational therapist before buying one.

What can I do if my MMD breaks down whilst I am out? Always make sure that your tyres are inflated to the correct pressure. RACV provides roadside emergency and breakdown assistance on 13 72 28 but if you call remember to ask if a charge is involved.

Can I be charged with drink driving a MMD? Yes, you can. Remember you are a pedestrian and you should not operate a MMD if you are affected by alcohol. If your MMD is powered by a 200w motor and will not do more than 10km/h on level ground the offence is being drunk in a public place. If the device is capable of more than 10km/h or is powered by a motor greater than 200w, then you will be charged under the Road Safety Act with the appropriate drink driving offence, such as Exceeding .05 or Driving Under the Influence (DUI).

June Issues - Youth behaviour in shopping centre - Brett provided advice and Churchill Harmony Group has been created to look at this issue.

Assaults - 6 for June (2 May) - Seven offenders charged. In one incident two offenders were charged with recklessly caused injury and affray.

Property Damage - 12 for June (8 May) - Six offenders charged, with some coming to notice as a result of family violence incidents. Over the past month multiple property damages occurred in Barooga PI (2) and Bookoola PI (2).

Burglary - 7 for June (3 May) - Lumen Christi School canteen was burgled twice with thieves stealing food and drinks.


The Churchill Football Club was targeted with alcohol being stolen after offenders smashed a window to enter the premises.

Theft from Motor Vehicles - 5 for June (0 May) - All but one of the thefts occurred in residential driveways.

A taillight assembly, wallet and fuel were amongst the items stolen.

Theft of Motor - 1 for June (1 May) - One offender charged. The


Churchill & District Lions Club
Meet
1st and 3rd
Wednesday
of each Month



CONTACT: Bill Hurenkamp
PHONE: 5174 4221

Morwell RSL Sub Branch Inc.

BISTRO
OPEN 7 DAYS
LUNCH & DINNER



All functions catered for
Rooms Available for:
Meetings, Conferences and Seminars

Entertainment for August

Saturday 20 August
Hound Dogs
*Dress in the colour Purple
*
Sunday 21 August
Old Time Dance
featuring
Ken and Alice Rae
Anzac Room, 2pm onwards

Saturday 27 August
Blackhill Ramblers

Venue voucher for best dressed in
"PURPLE"
Saturday 20 August

Telephone: 5134 2455

New Program for Nursing

Nursing students in East Gippsland are set to benefit from a new program which will allow them to study for their Bachelor of Nursing Practice and access the resources of Australia's largest university – all without having to leave Bairnsdale.

A joint project between Monash University, East Gippsland TAFE and the East Gippsland Regional Clinical School, the Bairnsdale Nursing Degree Program will allow students who have completed their Diploma of Nursing at East Gippsland TAFE to use their qualification to apply directly to the second year of Monash University's Bachelor of Nursing Practice degree.

The program will use new technology – such as real-time video-conferencing – to link students in Bairnsdale with classmates and teachers at Monash's Churchill campus, while local staff at the East Gippsland Regional Clinical School will conduct hands-on tutorials and workshops.

Acting Head of the Gippsland School of Nursing and Midwifery, Associate Professor Simon Cooper, said the program was unique in not only in helping overcome the tyranny of distance, but providing regional students with an additional pathway to university study.

"The introduction of the Bairnsdale Nursing Program provides students in East Gippsland with the ability to access the resources of Australia's largest university, without having to travel to Monash campuses at either Churchill or Clayton.

"The program is designed to build on study undertaken at East Gippsland TAFE, and allows a student to use their Diploma in Nursing as a stepping stone to a university degree," said Associate Professor Cooper.

By addressing the inequities caused by distance and entry criteria, Associate Professor Cooper said that over the longer-term, the program would allow more students in Bairnsdale to study nursing, and ultimately, help alleviate the shortage of nurses and health professionals in the East Gippsland region.

"Our broader aim is to develop a satellite teaching model to provide easy access to university study for students in East Gippsland and other parts of regional Victoria," said Associate Professor Cooper.

12 students from the Bairnsdale region have already commenced studying towards their Bachelor of Nursing through the program, with many welcoming the benefit of being able to study locally and avoid the need to travel significant distances – or move away from home – to attend university.

Professor Simon Cooper and students are available for interview. For more information, please contact: Elisabeth Jacob on 03 5122 6630 or Tim Grainger (Director, Public Affairs) on 0419 655 533

Pictured: 12 students from the Bairnsdale region will begin studying their Bachelor of Nursing Practice degree thanks to an innovative program developed between Monash University, East Gippsland TAFE and the East Gippsland Regional Clinical School.



Rotary Club of Hazelwood



being in Opposition with its peculiarities and challenges.

One of his roles is Parliamentary Secretary for Small Business; another is as one of a group who are Acting Speakers. Russell chairs six backbench committees to scrutinise proposed legislation. Locally Russell chairs the LTP – a program with Berry Street that arranges driver mentors (15 at present) to help learner drivers who have no family support get their 120h of experience.

His position opened his eyes to the wide extent of community volunteerism, and he has seen much outstanding leadership. He is also a

During July, the Rotary Club of Hazelwood has enjoyed listening to various guest speakers.

On July 11, our guest speaker was the Rev. Abraham Maluk, from the Anglican Church in Moe. Accompanied by Abraham Malual, Abraham explained his impoverished childhood in the Southern Sudan, fleeing war torn areas around his home and region and losing all his immediate family. His personal desire to be educated is a story of sacrifice, hardship and triumph. Now Abraham is leading a local group raising funds to establish accommodation facilities for orphans living in the Bor region of Southern Sudan.

Russell Northcote MLA was our guest on July 18. Elected in 2006, and again in 2010, Russell outlined the transition to Government from



member of the Parliament Lions Club.

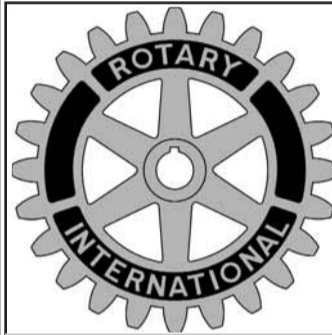
Russell's overall message is to "focus on the positives".

Last week our guest speakers, Vincenza and Doug Alexander told us about their Mirboo North based snail (escargots) farm with about 40,000 snails currently being farmed. It takes 6-8 weeks to grow snails to restaurant size of between 8 -12g each. They are literally unwound from their shells and purged to make edible. The shells are crushed and used

on gardens. Snails are hermaphrodites, but need another snail to reproduce.

In addition to guest speakers, the Club recently held a highly

successful barbeque at Bunnings Hardware at MidValley. These occasions are significant fund raisers with all funds being re-distributed throughout our community.



Hazelwood Rotary

MEETINGS:
MONDAY'S
6.30PM - 8.00PM
ITALIAN AUSTRALIAN
SPORTING CLUB

CONTACT:
Ken Peake
President

PHONE:
5166 1848



Children's Bedroom Furniture



Mattresses

Huge Selection on all bedding



Lounge Suite



Bookcases
Best Range
Best Prices
Best Finish



New

TV Video Entertainment Unit

GIPPSLAND

FURNITURE HOUSE GROUP

Established in 1976

Quality Custom-Made Furniture

VISIT OUR WAREHOUSE
see your items being made . . .



VISIT OUR SHOWROOM AT: 224 COMMERCIAL ROAD, MORWELL. PHONE 5134 1888

OR TAKE YOUR PLAN TO OUR FACTORY FOR A FREE QUOTE AT: 73 CHURCH STREET, MORWELL. PHONE/FAX 5134 2933

Jeeralang North Hall Reconstruction

The Jeeralang North Hall reconstruction and extension of facilities is nearly finished. Much hard work has been done by the Hall Committee supported admirably by the Latrobe City Council Governance section, and especially by Deb Brown and Sam Fenton who have facilitated the proceedings well.

The Hall Committee wishes to extend their thanks to them.

The new facilities include a children's playground and a BBQ area. The Hall

Committee hopes that the local community will avail themselves of these wonderful facilities and use them for a picnic on a drive out into the area.

The Traralgon Lions Club has donated the play equipment for the children's playground, and the Committee wishes to acknowledge their contribution with thanks.

The hall will be well equipped also with kitchen amenities. Once the hall is finished it will be available for hire.



Pictures of Jerralang North Hall Reconstruction as at 3rd July 2011



Gardening Group

Hi Everyone.

We certainly had our fair share of rain. But with all the moisture, quite a deal of nutrients will have leached from the soil.

So now is a good time to fertilise our entire garden.

I personally like pelletised chook manure.

However, there are many kinds available to suit citrus, camellias, daphne, etc. Please read the directions carefully and apply accordingly.

If you did plant a green manure crop, crop it down and dig it in with a bit of blood and bone and in 2-3 weeks your garden bed will be ready for your spring veggies.

Do not be tempted to plant tomatoes yet, no matter how good they look in the nursery, unless of course you are able to molly coddle them!

Tomatoes planted in mid to late October do just as well if not better than those planted earlier.

If you missed planting spring bulbs some months ago, don't be disappointed.

There are many pots of flowering tulips,

miniature daffodils, hyacinths, etc that can be bought and placed in a spot in the garden or as a feature around the home. The bulbs then can be saved and replanted next year.

With all the new spring growth and rain, be ever on the lookout for snails. They seem to love the flower spikes of orchids. Aphids are rife on the new growth also, especially on the roses.

Rub them off by hand, squirt them with the hose, or use a pyrethrum based spray.

We are spoilt with the glory of spring blooms and perfume; some being our Victorian pink heath, magnolias, spring blossom trees which are a joy to see in Mathison Park, pearl bush (Peris Formosa), and snowball tree (Viburnum Opulus).

The snowball tree remains a favourite of mine from childhood, with memories of fights with my brothers using the snowballs.

Please try to buy a bunch of daffodils for Daffodil Day, Friday 26th August. The funds go to Cancer research.

That's all for this month.
Happy gardening!



HOUSEHOLD LINEN & MANCHESTER
CALL IN AND SAY G'DAY TO
DENESE & JENNY

112 GEORGE STREET, MORWELL
www.interiorfocus.com.au

LINEN FOR EVERY ROOM IN YOUR HOME
* RANGE FOR ALL AGES

* GREAT
GIFT IDEAS!

03 51661300



www.facebook.com/interiorfocus



Calling all Secretaries!

Churchill and District News invite you to send your news to us for publication each Month

Publication Dates

(Deadline for submission of copy and sport results is the 30th of each month)

September issue published Thursday, September 15th

October issue published Thursday, October 13th

November issue published Thursday, November 17th

December Christmas issue published Thursday, December 15th

Copy and advertising accepted at the office Wednesdays 11am - 1 pm
or drop off to Churchill Post Office or Churchill Hub

Email: cdnews@dcsi.net.au



Lions and Lionesses

Donated pump improves patient comfort

Churchill Lions will pay for a portable pump that delivers medication intravenously, the latest in a long list of donations over many years to Latrobe Regional Hospital.

The Lions have contributed \$3,000 for the device, a GemStar pump, which will be used by patients receiving care under the Hospital in the Home (HITH) program.

The pump affords patients a greater level of independence and comfort, allowing them to go about their usual business – such as attending work or school - while receiving treatment.

It also reduces the number of home visits required from medical staff.

Lions president Reg Grisotto presented a cheque for \$3,000 to HITH coordinator Genevieve Lethlean at the club's changeover dinner on 29 June.

"The pump will allow patients to go home earlier. Sometimes it is only one or two days earlier, but to the patients that can be all the time in the world," Ms Lethlean said.

The hospital also received \$450 from the Churchill Lionesses at the changeover dinner. The money will be used to purchase a Wii Sports for the hospital's community residential care units and a breast pump for the Flynn Unit.

The Churchill Lions have donated a total of \$30,000 to the hospital over the past six years while the Lionesses, who have chosen to champion mental health services, have donated \$5,000 over the same period.

Photo right: Generous support: Churchill Lioness president Merrilyn Grisotto, Latrobe Regional Hospital's Genevieve Lethlean and Churchill Lions immediate past president Reg Grisotto at the changeover dinner.



Left: President Merrilyn Grisotto presents Adam from the Lions Licola Village a cheque to purchase items from their wish list.



Churchill shopping centre for the You Are My Sunshine Foundation (YAMS), a Foundation set up to fund research into a cure for Neuroblastoma, a cancer which is mainly found in babies and young children. Thanks to the generosity of the Churchill people we had an excellent result, also thanks to Woolworths for supplying the BBQ.

Our knitters have been very busy keeping up the supply of beanies, scarves, rugs etc. which we send to Open Family, a charity which cares for homeless youth. We are still supplying emergency packs for the Latrobe Regional Hospital, a service which is much appreciated by those unfortunate enough to be admitted to hospital, sometimes far from home.

The above sounds like a lot of hard work but we enjoy what we do and when the rose garden is in full bloom we know it's been worthwhile.

Lionesses

In conjunction with the Churchill Lions Club our Changeover Dinner was held in June at the RSL Club in Morwell. This event is held to induct the office bearers for the coming year. Merrilyn Grisotto is our President, Lisa Twigger is to be our Secretary and Wendy Steenbergen has again taken on the role of Treasurer.

Our members have been very active in preparing the rose garden at Hazelwood House for the coming months. A lot of pruning has been done. We appreciate the help we receive from some of the residents at the hostel. The rose garden has been maintained by the club since the garden was first established after Hazelwood House was completed and is a delight to both visitors and residents.

On Saturday July 23 we held a sausage sizzle at the

Latrobe City GUNYAH WARD

For general assistance and information
1300 367 700
or
www.latrobe.vic.gov.au



Cr Ed Vermuelen

To contact Cr. Vermeulen for matters concerning Gunyah Ward
0428 148 585
or Email:
edve@latrobe.vic.gov.au

Churchill Self Storage

THREE SIZES:

3m x 3m

3m x 4.5m

3m x 6m

*Situated at corner of
Switchback Rd & McCormick St, Churchill -
Across from Churchill
Timber & Hardware*

SECURE ACCESS VIA ELECTRIC GATE & YOUR PADLOCK

Phone **03 5134 2790**



Contact:
B. J Bennett & Co. REAL ESTATE PTY LTD
219 COMMERCIAL RD, MORWELL

Without a Travel Agent You're on your own . . .



We pride ourselves on our service. We are there before, during and after your holiday for complete confidence and assurance . . .



213 Commercial Road, Morwell
Phone
5134 3388

Jetset Travel **Morwell**

Licence No.32298

SANDRA KUEMPFLEIN
Morwell Florist
8 TARWIN STREET PH/FAX: (03) 5134 4266
SHOP 31 MID VALLEY SHOPPING CENTRE
MORWELL PH/FAX: (03) 5133 7322
www.morwellflorist.com.au

Churchill CHIROPRACTIC
Dr David A Forys, Chiropractor
Laberta K Forys, MSc, Dietitian
3 Switchback Road,
Churchill
Phone **5122 3336**



Looking Back...

...through the eyes of local residents



Mary Austin: An Extraordinary Life: Making a Real Difference in Churchill



The nursing staff at Birchip Bush Nursing Hospital



Nursing at Birchip



Community Health Work in Churchill



Post Natal Group in Churchill

In 1955 the twins began working in Victorian Bush Nursing hospitals including Birchip, where Mary and Ruth received a wonderful welcome. However Ruth became ill and specialist advice was to go north and "burn it out of your system". So off they both went in the little blue Prefect loaded with camping equipment and nursing uniforms. Their route took them up the coast to North Queensland. Mary took a position at Mareeba Hospital and Ruth was permitted to stay at the CWA Hostel opposite. It was here where pregnant women from outback Queensland would stay until their babies were due for delivery.

The girls would spend Mary's days off at the coast and many an enjoyable day was spent exploring the rock pools or out on nearby islands. Ruth eventually recovered and was able to resume nursing.

Back in Victoria in 1959, Mary took charge of the Box Hill Hospital on night duty. She recalls one wet cold night she was advised to call the police if there was any trouble with 'vandals', as had occurred during the day. Sure enough there was some blood curdling howls at about 2am so Mary phoned the police. She was really embarrassed when more knowledgeable staff advised that the noise was being created by the Great Danes up the street!

Returning to more study in 1960, Mary did a four-month Infant Welfare Training course, which led to her appointment to Melbourne City Council Health Department. She was allocated Kensington Infant Welfare Centre, where the New Market Cattle Sale Yards were just outside her window. She worked there for three years, loving the time spent with lots of different people, providing help and guidance and dealing with their needs. The centre was a very practical network with doctor and dentist also involved.

1965 saw Mary take up a position in charge of thirteen family group homes at Melbourne Family Care Organisation. House Parents, often with children of their own, were employed to care for children who were unable to be cared for by their own parents. Most were Wards of the State. She was also involved in the social welfare section doing preventive work, visiting families in their own homes where there was a risk of their children being taken from them. This was a very moving experience for her but after eight years she decided to return to nursing.

Community Health Program for Australia

In 1973 the Australian Government set about adopting a more preventive aspect to Australia's health services. "The Community Health Program for Australia" was born. Nurses would be required in this new specialist field and The College of Nursing, Australia, prepared a 12 month course entitled "Diploma in Community Health Nursing" to fulfill the need. Mary applied and was one of the 20 nurses in this first Community Health Nursing Course. They came from many different fields, with some from overseas mission stations.

Subjects studied were many and varied. They included microbiology, psychology, nutrition, health education and community health to name a few. Mary and four others had been awarded scholarships in Aboriginal Health so it was no surprise to find that they had to do a special course in vehicle repairs and to learn how to drive a 4 wheel drive truck. They were also taught how to prepare a landing strip for a plane expected after dark! Thankfully such an event never occurred.

In the Outback

For field experience she was sent to Alice Springs and from there to Papunya Aboriginal settlement for a month. From the settlement she accompanied a hospital nurse far into the outback visiting numerous Aboriginal groups and yes, they had a puncture one day and the spare was huge and very heavy. Back at Papunya the nurses were often called out at night to attend to the effects of fights. Nulla nullas were usually the weapons used on skulls. On the whole it was a most interesting time for Mary. She was free to visit all aspects of the settlement, the school where there were many children with hearing and sight defects, and the one store where goods from Alice Springs were delivered on a weekly basis, outside of which the sand was littered with ice cream papers and soft drink cans. Mary was able to spend evenings working on her assignment to present to the College.

Meanwhile, much was happening in Churchill. A steering committee had been set up to put a submission to



Mary Austin

the National Hospitals and Health Commission for funding for a Community Health Centre in Churchill, a town built by the government in 1965 for residents relocating from Yallourn. The submission was successful.

'She'll do us'

Mary's mother had kept Mary advised about the proposed new Centre and whilst at home one weekend Mary arranged to meet Ross Ollquist at his Churchill Pharmacy to learn more about the planned Centre. To her surprise the customers waiting to be served turned out to be members of the Steering Committee, no doubt keen to meet one of the new 'breed' of nurses. Following an invitation to have a look at the Gippsland Institute of Advanced Education, they all went there and in due course she was introduced to a lecturer, Dr Bess Deakin, a trained nurse with a PhD. It was a very sociable occasion but to Mary's surprise "She clapped me on the back and said 'She'll do us'. What an incredible experience it had been. I hadn't even completed my Diploma and here they were trying to appoint me to their staff," mused Mary.

The new Community Health Centre opened in March 1975 and Mary commenced duty in June having completed her Diploma Course a few weeks earlier. She stayed there for 12 years until reaching retirement age of 65.

During that time Mary introduced and developed the 'totally new role' of Community Health Nurse to staff, committee and community. The idea of nursing 'well' people was a new concept.

"Wellness starts with preventative actions. I had to find out what made Churchill 'tick'," Mary explained. According to the most recent census there were only 21 persons over 60 years of age living there in 1975. There were children everywhere and furniture vans unloading people's possessions into brand new houses. Many of the residents were from overseas countries, bringing with them their country's mores and having to learn to adjust to Australia's more relaxed style of living. For example a lady from Belfast couldn't understand why an employee of Target was quite disinterested in having her open her bag for inspection at the check out. That had been a common practice in Ireland.

Mary began visiting and listening with 'long floppy ears' to people's needs and anxieties. From these visits many needs became apparent, especially of new residents moving in. The few older people needed opportunities to meet and do things together.

"I like living in Churchill but no one will play Cribbage with me" said one elderly lady. So a Senior Citizens Club was required. Mary organised these older people to take action to form their own club. For a long time they met at the Co-Operating Churches before moving to the Town Hall.

For three and half years the Churchill Community Health Centre operated out of a series of Housing Commission houses, so the staff were overjoyed to move into the new building in Phillip Parade on 27th October 1978.

The electricity strike of June 1979 saw the formation of 'You Can Make It' group as many women had husbands who were on strike. It was a means of preparing for Christmas, but also gave the women a venue in which to socialise with others also affected, to discuss their difficulties and anxieties. Activities included rug making knitting, crochet, and macramé. Making Christmas puddings made in a cloth was a novelty. Shortbreads were made and recipes exchanged. Cultural contributions such as almond bread arrived at the next meeting. These sessions were held at Churchill Primary School and were well attended and received.



Looking Back...

...through the eyes of local residents



A host of initiatives

Later that year, a need to help overweight children resulted in the formation of a Junior Health Watchers group. They met after school, were weighed, and had lessons on eating healthy foods, not empty calorie-loaded foods. Mary too, watched what she ate and also lost weight.

The schools invited Mary to run programs in healthy eating with all grades. These lessons Mary found enjoyable and helpful.

"It resulted in overweight children ceasing to be teased," she said.

Her role involved her as a member of the Latrobe Valley Community Health Co-Ordinating Committee. This committee received funding supplied by the Federal Government, for a special pilot program. Mary's proposal that it be used for a smoking control program was accepted. The program was very successful in this part of Gippsland. Funding ceased and it became the Statewide QUIT program.

Mary says the Latrobe Valley should be quite proud of the fact that it was instrumental in setting up the present QUIT program.

Some residents had no way of accessing a doctor overnight if their husbands were on night shift, except by expensive taxi. Their family network was a long distance away, generally in Melbourne, and of course money was tight for telephone communication. Only a few telephone boxes were located in the town.

Something had to be done to integrate new residents, many of whom were frightened to talk to their neighbours. Such was their history.

Mary did a lot of visiting on foot, and found that residents were happy to invite her in. They were relieved to have someone to talk to.

As there was a hotel, Mary, with the co-operation of the CHC (Churchill Health Centre) committee approached the publican to supply a low cost lunch for the new residents. He happily agreed, and the lunch was organised. The residents came with their pushers and children to enjoy a shared meal.

They all sat at a long table and Mary set about introducing them to each other and having them share details like places of origin, families, interests etc.

Mary fondly and enthusiastically remembers that as they sat at the table having finished their lunch, a huge strawberry and cream-filled Pavlova arrived over her shoulder- a gift from the hotel management. Waiters were provided to serve this splendid treat. There was a spontaneous "OHHHHHHHHH" as the people saw the delightful dessert. This was an introduction to the network operating within the Churchill community, which was eager to make sure new residents felt welcome and included. Mary also realised that she was now not working on her own but had community backing.

Another realisation uncovered, was that young mothers needed more knowledge about home nursing, e.g. how to take a temperature and care for a child with a temperature etc. A Home Nursing course was established with several repeat sessions. First Aid courses were also arranged.

With a request from a member of the community a Ladies Discussion Group was formed where women could discuss and share their menopausal problems.

An ante-natal group began to help couples having babies. These were held in evenings so husbands could also attend.

As a result of this a request from the Health Department in Melbourne came asking what facilities were available for mothers and young children in Churchill. So Mary asked one of the young mums who identified a need for an 'ante-natal after birth' group. Mary was tickled by this reply. So the wonderful group of women was formed in late 1982. Each week they would sit on the floor around two large mattresses covered with sheets in the middle of the community room. There would be numerous prams and pushers 'parked' around the walls of the room. The women made friends with each other as they sat, as did their children. Afternoon tea was supplied. Guest speakers were arranged on topics selected by the mothers themselves, ranging from medical practitioners to the Infant Welfare Sister, who were happy to answer their questions.

As the babies grew it was evident that playgroups were needed to continue the support network. So the

"Owl and Pussy Cat" Playgroup was developed. They met at first in the Golf Club Rooms at Monash University.

A special play group was also formed for disabled children. An Adult Eating Awareness Program called "Operation Bikini" functioned for many years.

Occasionally Mary also helped on weekends and public holidays when Hobson Park hospital was short staffed, and psychiatric patients resident in Churchill needed help. This was done on a voluntary basis.

Among Mary's other initiatives were Meals on Wheels, Health Screenings at Monash, a School Dental program, health assessments at Morwell River Prison, Parenting Skills, Podiatry for the elderly, Relaxation Classes, Human Relations Courses for the grade sixes, with a Parent's Night information night.

A home phone line was available for people to ring Mary after hours when doctors were not available.

Later, with the help of the Anti-Cancer Council in Melbourne, a Mastectomy Support Group was formed. Many women took advantage of this. Mary was surprised recently to learn that after 21 years the group is still functioning and operating from Traralgon.

Using self-evaluating pamphlets obtained from the National Heart Foundation people attending "Operation Heart Beat" could estimate their risk of heart attack. This inspired Mary to organise an opportunity for attendees to have their blood sample taken and sent to pathology for cholesterol examination. There was an alarming number with high levels. These people were notified and invited to attend a healthy cooking course. Most of Mary's groups were held after hours in a voluntary capacity for she felt that the operation of the groups was of paramount importance.

An active retirement

Mary retired in June 1987 aged 65, after taking her due long service leave. She was awarded a Life Governor of the Community Health Centre 'for her outstanding contribution and dedicated service to the Churchill community'.

Mary admits there were some disappointments but much happy and satisfying work achieved during those twelve years.

Since retiring, Mary has continued her interest in many activities, including the Field Naturalists whom she attended in Melbourne in 1955, but now with L.V. Field Naturalists. Her garden is a picture and this was open to the public on a couple of occasions in the 80's. Love of crafts has involved her with several groups not only to do the craft but to enjoy being involved with a social network of friends. Attending Church is important to her. Other activities include the Yinnar Book Club, Morwell Rose Garden, and more recently membership of Morwell Probus Club. Learning to use her computer has been a challenge which has been somewhat reduced since having regular help from a good friendly neighbour.

Travel has taken Mary to many places on this earth, especially after her parents died. Many of these trips were done with twin sister Ruth, until she too passed away.

One important involvement following shortly after retirement was being a member of the Fundraising Committee for Hazelwood House.

Reflecting back over her life to record this story, Mary has realised what a wonderful experience life has afforded her, especially in her working life. She wishes to express her thanks to all those with whom she has worked. There was always a great deal of co-operation and mutual consideration which made her jobs so enjoyable and fulfilling. There were the odd disappointments she admits, but on the whole most experiences and placements proved satisfying.

Thank you Mary...

Mary Austin has lived life to the full, and continues to be very interested in all that is going on in this world and locally. Her family and friends are all-important and special to her, and think she too is special. Mary's compassion and initiatives deserve the honour of this community, which is still benefiting from several of the groups she instigated. Thank you Mary, for your dedicated work, paid and unpaid. We are the better because of it.



The Owl and the Pussycat Playgroup February 1980



Community health work 1982



Mary's retirement



Mary and Ruth in Ireland



HAVE A TOUR OF POOH CORNER CHILD CARE CENTRE

You just never know
when you may need us.

- Open from 6.30am to 6.30pm.
- Fully qualified caring, attentive staff.
- Full time, part time or occasional care for 0-5 years.
- Educational programs that encourage and develop skills.

APPOINTMENTS CALL
51226227



Pooh Corner
Child Care Centre

EST. 1980



Churchill Hub
Philip Parade, Churchill
Web: mugsu.org.au

Latrobe Valley Model Aero Club



Wayne Lewis has spent the last 29 years as a very involved member of the Latrobe Valley Model Aero Club. His work is most respected and all of his fellow club members decided that he deserved a Life Membership. It was at a gathering of club members at the Yong Choon restaurant in Moe that this award was presented in his honour.

In presenting the framed certificate, President Chris Davenport outlined Wayne's involvement. Wayne has been Treasurer for 22 years, been the editor of the newsletter for 18 years, is Webmaster, Flying Instructor, Test Pilot, Toilet Organiser, Water Carrier, Airfield Mowing Man, Working Bee Organiser, Event Organiser and more.

The presentation was completed with a hearty round of applause for Wayne, who responded by saying that he loved being involved in the club and it gave him lots of satisfaction and that he had not done it all alone. There were other club members who assist with many of the things that need to be done to run a successful Club.

The Latrobe Valley Model Aero Club will be forty years old in 2012. The airfield known as "The Field" is situated on the banks of Lake Narracan near Newborough. They have their monthly meeting at the Latrobe Regional Airport near Traralgon and the Club is expecting to have around sixty financial members this year, with some members flying every week and some members not flying much at all. All flying in the club at present is Radio Controlled with the new 2.4GHz radios becoming very popular.

Over the years, Radio Controlled Models and Controllers have become very affordable and they all look so good. Many members buy what is called an ARF models- almost ready to fly. Member Ian Place says you get the box, give it a shake and out comes the completed model. That is not quite all that is entailed, but the model is basically pre built and requires minimum effort to finish off and is much simpler than building from scratch using large plans, which some members still do.

Building from scratch can be a little more expensive and can take a long time, but it can be very satisfying to see the finished model actually take to the

sky. Those experienced in this art, know how they can add to the plane to make it stronger and safer for flying and landing.

Balsa and plywood are the traditional building materials with Iron-on shrink covering for finishing the model, but electric foam models are now becoming very popular.

When a member starts out they are advised to use a slow model or trainer. This is a model which is not quick or 'twitchy' and is more easily controlled. After a period of time with the instructor, a person can be awarded their bronze wings and can fly unaided.

This is a big moment in their progress. With more experience, a modeller can try more zippy types of planes, building their confidence and even engaging in some aerobatics and going for their Gold Wings or Instructor rating.

There are many types of models that you can buy and they may be scale models, sports models, pylon racing models, aerobatic types, fun fly models, small planes for combat events (very exciting to participate in and to watch), helicopters, gliders, float plane models and more.

Lake Narracan is an ideal venue for all of these types of models.

Fuels vary according to the type of motors used e.g. Glow, petrol, or diesel. Now many members opt to use electric motors which are much cleaner and simpler to operate. The technology for electric motors and batteries has progressed a lot in recent years.

Some club members attend competitions held by other clubs in Victoria and the LVMAC club stages special weekends to which other clubs are invited to attend.

In my opinion the hobby has never been cheaper to get into, but it can become quite an expensive hobby if you crash too often, and model aeroplanes do crash frequently, and its not always Pilot Error. The hobby can give club members a lot of satisfaction and at times some frustration.

If you are interested in joining this group of enthusiastic flyers, you can visit the LVMAC at Lake Narracan on most weekends if the weather is suitable or contact Wayne on 03 5134 3189.



Churchill North Primary School

Junior School Council 80's Disco



Our junior school council organized an 80's disco!!! The students and teachers were allowed to dress in funky 80's clothes like – fleuro tops, leggings, leg warmers, crazy hair, gloves and face paint.

Miss O'Brien and Miss Pearce were the teacher's organizing the disco and Blake and Justine assisted them.

Best dressed were Ebony and William in the junior classes and Shania and Jordan in the senior classes. Entry into the disco was a gold coin donation and this is going towards soccer nets on our oval.

Reporters Shaylah H and Ebonie G Grade 3/ 4H



2012 Kinder Prep Transition

When the kinder students arrived Miss Dunne talked about the weather and the day of the week. Miss Pearce read a story about the jungle. All students sat on the mat and put up their hands, and then they had the chance to act like animals from the story. They loved it.

All students then made zebra masks, sticking different shapes on such as an oval, circle and triangle. The students then sat and ate some fruit. To finish off the morning the students received a show bag, sang some songs and played on the new playground.

2012 Enrolments

The school is again offering 2012 prep families the following bonus once we receive enrolments:-

- 1 school shirt
- 1 school jumper
- 1 school hat
- School levies exempt for 2012.
- Total value \$150.00

If you have friends and family interested in finding out more about the school, please encourage them to ring the school on 51221976.

Reporter Jessica M Grade 5/6 O'B

New School Building

Churchill North Primary school is proud to present a brand new building. Mrs. Edwards worked with the builders to come to our school and build such a wonderful construction. Before the building was brought to our school we had to knock down

the junior playground and relocate this to a different area in the school. This building is going to be used for playgroup, after school care, breakfast club and meetings.

Reporter Jordan H



Gippsland Education Precinct

United Nations Model Forum

Last Wednesday 90 students from 14 schools across Gippsland took part in a Model United Nations Forum at Monash University, hosted by the GEP Campus of Kurnai College. There were 28 teams representing their allocated countries. The Monash Auditorium was set out like a typical United Nations Forum, with teams provided from each of the campuses of Kurnai College.

The program was an extension of a program which has been run over several years in Gippsland by the Rotary Club of Hazelwood. This year the Department of Education and Early Childhood Development, and the United Nations Association of Australia joined in the program.

The topic under discussion for this session was that of refugees. The guest speakers gave students an appreciation of what it was like to be a refugee. The presentation by Abraham Maluk, a Sudanese refugee who has now settled in the Latrobe Valley, was thought provoking and clarified some issues about refugees.

Each group was required to research the country they were representing, to find out background information about the country, its issues with refugees, and their policies and practices with refugees and migration. They then had to present their findings and position to the whole United Nations forum. The forum then asked questions and could challenge their position.

Students were required to develop resolutions regarding refugees and then seek other countries' support for their resolutions or amendments. This involved moving around and convincing other countries to support their position. Finally the



resolutions and amendments were put to the whole United Forum for a vote. An example of a successful amendment, was the inclusion of the words "climatic and natural disasters as criteria for accepting refugees"

Students gained an appreciation, not only of the issues regarding refugees, but how the United Nations operates as a whole. The students from the various schools present found the experience to be valuable and insightful, providing a global perspective of the world in which they live.

Parent Information Evening

The Gippsland Education Precinct held their annual parent information evening for prospective Year 11 & 12 students on Tuesday the 26th of July. The evening was well attended by families from across the Latrobe Valley, who gained an insight into the multi-facet educational facility and some of the unique opportunities available to students.

The evening began with campus Principal Matt Jobling outlining some of the programs on offer, as well as the benefits of a facility co-located with educational partners, including Monash University, GippsTAFE and Apprenticeships Group Australia (AGA). Following the presentation students and

parents were able to speak one on one with staff from the Precinct, to gain further information relevant to their interests.



Anyone who would like more information about studying at the Gippsland Education Precinct or would like a tour of the facilities is encouraged to contact the school on 5132 3800.

Environmental Science at Churchill's Waterways

Senior VCE students studying Environmental Science at the Gippsland Education Precinct have begun an extended investigation into the health of Churchill's waterways.

Led by teacher Heather Ernst, the students will record a number scientific measurements and observations from both Lake Hyland and Eel Hole Creek over the coming months.

Students will be testing the oxygen and phosphorus levels, as well as pH and salinity – all key indicators of the health of the waterway and surrounding environment.

The class made their first trip on Monday 25th August where students collected a range of samples. The samples were subsequently tested using advanced analytical techniques. The group will make a series of trips to enable them to monitor the environmental changes that take places as we move from winter to spring and towards summer.



Churchill Primary School

Principal Susan Gilmore has been on long service leave, having a trip overseas. The school has welcomed her back.

Churchill Primary School has had a busy start to the new term and everyone seems happy to be back.



National Tree Day 29.7.11

Churchill Primary School participated in National Tree Day by planting out two gardens. Two representatives from Wights Toyota - Jodie and Cindy, joined the school for the day. Toyota is Sponsoring Planet Ark to plant more trees to make our environment cleaner and healthier for all living things.

Mrs Wendy Smart coordinated the project in which the grade 5/6 students were involved. Before the day, our old computers, which would have ended up in landfill, were stripped and the mouses, cases and key boards were taken off them. The cases and key boards were then painted in bright colours by small groups of students over many weeks.

On National Tree Day they were filled with soil and succulent plants were planted in them. They make good containers for the plants because of the good drainage and filtered light. On the wall behind the plants the students had stuck the painted keyboards and painted scenes depicting mice. The computer mouses had been painted and made into the form of a rodent to be stuck to wall. Images such as Hickory, Dickory Dock, cheese, and cats now decorate the wall.

A lovely flower garden was also planted out adding colour



and interest for the children.

Joining of the Old Building to the New

It has been a long time coming, but finally the two buildings have been connected with a wonderful accessible passageway, with wheelchair access and railings for safety.

The classroom which was partly demolished to make way for the construction of the new building has also been completed, and is now a working space for small groups work.

The Library

During the construction time, the Grade 5/6 students used the Library in Block B for a classroom. The library books and resources were located in the corridor near the staff room for that period of time.

The library books and resources that lined the corridor are now being returned to the library.

There was a need to clean and remove old stickers from the shelves in preparation for this re-settlement. Special thanks go to Roz Carstairs, who volunteers to run the library, and parents Steve Mayer, Ros Fyfe, Kath Sorby and Kelli McCartney. Your efforts are most appreciated.

With all this reorganisation and return to normality, there has



been a freeing up of space for activities to again happen. The staff is thrilled with the facilities and look forward to working in the new arrangements.

The Grade 1's were heard to say that they were thrilled to go

to the library and borrow a book instead of having to borrow from the "corridor Library. They are also enjoying attending library lessons.

The New Building

This new facility is a wonderful practical space with lots of small areas for children to work in groups. It is lovely, light and airy, incorporating environmentally friendly design features. The teachers and children from grade 3-6 enjoy working in the facility, and the littlies look forward eagerly to their time there.

Kinder Visits

The children from the Pre-school at the HUB, who attend on Wednesdays and Thursdays, came for a visit to the school by bus.

During the visit they were able to take part in a walk around the school and participate in some 'hands on' activities, listen to a story, and have fruit time. Parents were able to ask questions and enjoy seeing what the school has to offer.

Enrolments for 2012

A reminder to all families and potential enrolments that your early enrolment for 2012 is greatly appreciated, as it gives the school plenty of time to ensure that they have the best possible classroom structure in place for the year.

Anyone interested is welcome and encouraged to give the school a ring on 51221343 to make arrangements for a tour of the school or to ask questions.

In our Classrooms

The major focus in the grades 3-6 for Term 3 is the Earn and Learn program with its building of communities and economic structures. Market days will begin within the next few weeks which will mean fun for all the school as the P-2 students get to join in and go shopping.

In the Prep-2 area this term the grades are learning about their bodies and healthy eating.



Yinnar South Primary School

The students and staff at Yinnar South Primary School are looking forward to a productive third term. We have had a great first half of the year and we are anticipating that the rest of the year will be even more inspiring. We are fortunate to have been chosen as a pilot school in the Latrobe Valley to trial Ipad's as a learning tool in all curriculum areas, particularly in the areas of Mathematics and Literacy. The students are very excited with the prospect of using the Ipad's and the numerous applications which are available to them. This adds to the already great ICT resources available at the school, which includes a computer per student, and interactive whiteboards which the students use on a daily basis to support their learning through interactive activities.

As our school is 125 years old this year the students will be



looking at the history of our school and local community. The students will be writing letters to past students and local identities who have attended the school over the past decades, inviting them to the school to reminisce about their time at the school, and the changes they have observed while living in the Yinnar South community.

Students will also be visiting local historical sites and researching the settlement of Yinnar South.

We would like to thank the Bendigo Bank for their cheque of \$250 which will go towards our Healthy Lunch program. Mr.

Allan Banister attended the school's Monday morning Assembly and presented the large cheque to our School Captains, Kim Gordon and Alfonso Surman, who responded with a "Thank you" speech on the school's behalf.

In addition to our Healthy Lunch program the students have been enjoying hot soup and a bread roll each Wednesday during the colder weather.

Enrolments for 2012 are now open and an inspection of the school is always welcome.

"Young Students Pursuing Excellence"



Hazelwood North Primary School

SEDA Sports Visits

For the last four weeks SEDA (Sports Education Development Association) has been coming to our school, Hazelwood North Primary School, to show us some soccer skills. At least 12 people came each time. We have done lots of activities from weaving in and out of cones to playing a game of corner soccer. It has improved everyone's soccer skills. Having SEDA visit was a lot of fun and they were very helpful.
By Sam D

Kurnai Awareness Day

Recently 5/6B and 5/6A went to Kurnai for an Awareness Day. When we got there we went to the library and the teachers checked if everyone was there. We got into different groups with kids from different schools, and an older student who took us to our activities, showed us around the school. There were lots of different activities like cooking, fly fishing, science, maths, art, drama, sport, computers, German and much more. At the end of the day we went back to the library then we went home. It was good because it showed everyone what secondary school will be like.
By Daniel W



Lumen Christi Primary School

This week Grades Prep and One went to the Vortex Centre at the Gippsland Water Factory. The children watched a movie about water in our area and then went on to learn about water through lots of interactive activities.



"I learnt that only 3% of the world's water is fresh." Andrew
"I learnt that Australia is the driest continent after Antarctica." Freya.



Healthy Eating

Grade 5/6G have been looking at the question "What does it mean to be healthy?" An important component is enjoying

healthy eating.

As a class, we discussed that there were many things we needed to be aware of and know about food in order for us to be able to choose healthy food. During our session we prepared a healthy afternoon snack and the best bit was getting to eat it.

Save the Children Blankets



Save the Children are looking for 15,000 knitted blankets so Lumen Christi children have taken up the challenge and are busily knitting squares. These will then be joined together to make blankets to be sent overseas for children who are in need.

Save the Children work in the countries of Australia, Bangladesh, Cambodia, Lao PDR, Papua New Guinea, Solomon Islands, Timor Leste, Vanuatu and Africa, providing the services of protection, education, health, emergencies and advocacy. If you would like to contribute to knitting squares for these children, please feel free to see us at the school and we will provide instructions.

Dinosaur Dioramas

After learning all about dinosaur habitats and dinosaur features, Grade 2 made some fantastic 3D dinosaur dioramas to show all the things they learnt about dinosaurs. In her diorama,

Bethany has a Pterodactyl flying over a swamp land and Mitchell has a Brachiosaurus roaming through the jungle past an erupting volcano.

Lumen Christi School Concert

We are very busy practising for our whole school concert which is to be held on Thursday 8th September at Lavalla in Traralgon.

It is going to be a spectacular performance entitled "One world, many movies". We have so many very talented students and staff who have been putting together a wonderful show. All grades will be performing an item from a movie, and the opening and closing numbers are performed by the whole school. It promises to be a great night.



Lumen Christi After School Care

Lumen Christi is now running its own after school program. We are open Monday to Friday from 3.00-5.30pm. Come and join us for an afternoon of fun.

- Monai "It's fun. I love art and craft"
- Mason "It's fun because there are heaps of games"
- Jacob "I like coming to after school care to play cards"
- Kirsty "I like playing Farmer Sam"
- Hannah, Holly and Ella "We love playing with our friends"
- Luke and Jack "We love building Lego"

Music with Paul Devlin

The students at Lumen Christi are shown getting into their musical preparations for the upcoming school concert. An eager group of budding singers and performers are seen putting in some vocal work for an item in the concert. Mr Devlin has been providing some musical guidance to the budding stars in their preparations. In addition to the vocal group, and as a result of the generosity of some of the school community donating some guitars to the School, Mr Devlin has been running Guitar and Mandolin workshops with a small group of budding musicians. The workshops provide for a basic strumming introduction to a number of students.



Kurnai College Junior Campus

Electronic Devices Policy.

Electronic devices include I pads, mobile phones, cameras etc.

The students are allowed to bring these devices to school. They can be used in classrooms where the teacher gives permission as calculators, cameras to photograph work off the board, make small videos for their studies, or as a watch.

They may also be used at recess and lunchtimes.

However, if they are used without permission or inappropriately they will be confiscated.

This policy is in practice for a trial period to see if it works. It will be reviewed at the end of 2011 to see if it needs to be tightened up, or if the school should revert to the former policy.

This was the decision made by the School Council, and approved by the Parents and Friends with questions

It is the electronic age, but the students need to be taught how to use these devices responsibly and appropriately.

Chinese Students and Staff Arrive

Twenty-two students and five teachers from China arrived at Churchill on 30th July. They will be at Churchill Junior Campus for one and a half weeks.

In that time they will do studies at the school and be involved in cultural and social trips each day. The students will be billeted with different school families.

This is a program which is part of the school's ongoing

relationship with China to foster good relationships with our Asian neighbours.

Reece Malcolmson.

Reece grew up in Morwell, going to Morwell Kurnai. He did Year 11 and 12 at Maryvale Campus. Then he took a year off study and worked as an Outdoor Education Trainer at St. Pauls.

Following this year, he studied at Ballarat, gaining a Bachelor of Physical Education. During that time he lived in residential accommodation.

Next he headed overseas for eleven months in 2010, working as a CRT (Casual Relief Teacher) in West London. That was quite an experience. He also travelled all over Europe during that time.

Since then he has returned to live in Morwell. He spent the first term teaching at Churchill Campus, second term teaching at Morwell Campus and has now returned to Churchill permanently.

Reece loves being a P.E. teacher as his passion is health and fitness. He plays football for Yinnar, and works in a gymnasium as a personal trainer.

He says that his job allows him to do what he loves five days a week. His students respond well to him also.

Lots of the kids from the schools are involved with sport outside of school, so he gets to see them from another perspective and they him, which he thinks is great.



JUNIOR FISHING COMPETITION

SATURDAY

5 NOVEMBER 2011

Lake Hyland
McDonald Way
Churchill



All Junior Anglers Aged Between
4 and 16 Welcome

Juniors **MUST** be accompanied by an adult
Only one fishing rod per competitor

*Mathison Park has Wheelchair Accessible
Fishing Platforms*

**Heaps of
Prizes to be
Won!!!!**



CHURCHILL & DISTRICT NEWS



Fishin' Trip
www.fishintrip.com.au



CHURCHILL PRIMARY SCHOOL COMMUNITY FETE

SATURDAY 12 NOVEMBER 2011

10AM - 3PM

Churchill Primary School invites interested
people to hold stalls at what is

shaping up to be a

HUGE EVENT!!

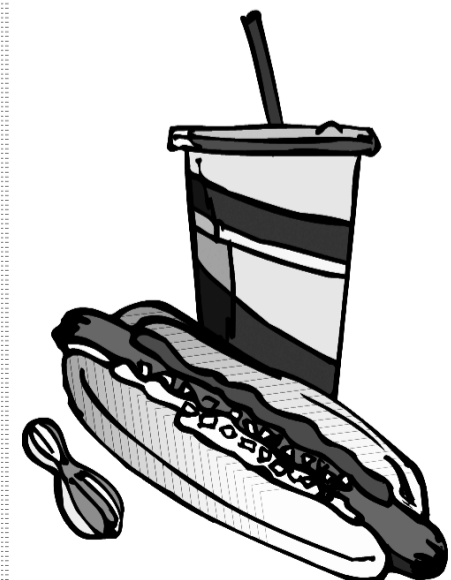
Stalls per stall \$20

BYO table

To Book your stall or for further information phone:

Gena on 51222845, Kelli 51223734,

School 5122 1343



Funding For Public Safety Projects

Grants of up to \$250,000 are available to local councils for public safety infrastructure projects to prevent crime and make communities safer, Nationals Member for Morwell Russell Northe said today.

Mr Northe said The Public Safety Infrastructure Fund Grants Program is part of the Coalition Government's \$39 million commitment to community crime prevention.

"This grant, along with the Community Safety Fund and Graffiti Removal Grants will help local councils improve security and community safety," Mr Northe said.

"Our councils are best placed to develop strategies for addressing local crime problems.

Community safety and crime prevention is a high priority for the Coalition Government and

this initiative will assist in making our communities safer."

Mr Northe said the grants may be used to assist councils in developing a variety of public safety infrastructure, including closed circuit television systems, vandal-resistant external lighting services, security grade

doors, perimeter fencing, bollards, window treatment and screens and alarms for community assets and facilities.

"I encourage Gippsland councils to consider lodging an application for funding as improvements to streetscapes and public spaces designed to minimise the risks of crime and to support safe behaviour are also included in this funding.

This might include proposals encouraging mixed use of open spaces or enhancing the natural surveillance and amenity of public spaces," he said.

Local communities can also assist by identifying local crime issues, providing potential solutions and promoting local involvement.

"The Government is committed to supporting local communities to achieve community-based crime prevention solutions through positive and practical community action," Mr Northe said.

Cut-off date for questions from potential applicants is September 30 2011 and applications close on October 28 2011.

For further information visit www.justice.vic.gov.au/infrastructuregrants.

Community and Sporting Grants

Finding Grants for your club can be a full-time and daunting job but one that can be very rewarding when successful!

GippSport is striving to make the searching for grants easier by providing links on our website to relevant grants.

The Grants Page is categorised into key areas such as volunteers, facilities, club development, equipment and sponsorship.

GippSport's Grant page also has links to Grant Providers, Fundraising Ideas Grants for Individuals and Grant Writing Tips.

To assist even further, people can now subscribe to our Grants Page and receive an email notification when grants have been added or updated.

Available Grants include: -

- Community Safety Grants (Department of Justice - closes August 29)
- Community Facility Funding (DPCD – closes July/August)

In addition, many Local Council's have Community Grants and Event Funding open at the moment with closing dates in late July and August.

Grant Writing Tips

1. Plan in Advance – Develop a list of programs that you want funded
 2. READ the Guidelines – highlight important information and criteria
 3. Phone the contact person – explain your project and ask credible questions.
 4. Be realistic about time, cost, ability to deliver - don't over promise
 5. Do your homework (What groups/ programs have won the grant previously?)
 6. Gather your evidence – statistics, evidence of need (letters)
 7. Collaboration (can you strengthen your application through partnerships)
 8. Explain how you will tell if your project is a success?
 9. Tailor your grant application to the Grant criteria (Don't just re-submit an old application)
 10. Always proof read your work (and ask some else to check as well!)
 11. Always credit the source of funding and thank them if successful.
- For more information visit our website at www.gippsport.com.au or contact us on (03) 5135 8335.

Senior Victorians to have say

Senior Victorians can provide their viewpoint on challenges facing ageing community members, said Nationals Member for Morwell Russell Northe.

Mr Northe said the Victorian Coalition Government is holding an Inquiry into issues surrounding senior Victorians, including productive ageing, the workforce, services for seniors and more.

"The Family & Community Development Committee is calling for submissions to its current Inquiry into Opportunities for Participation of Senior Victorians," he said.

"The Inquiry will review national and international literature on preparing for an ageing society. It will examine the contribution of, and challenges facing, older members of Victorian community from diverse cultural and linguistic backgrounds, identify the role of government in supporting older Victorians as well as look at ways to promote positive ageing.

It also plans to look at the economic significance of older Victorians in the paid workforce and the voluntary sector and barriers to participation for those seniors who

desire to work or contribute to the community. The final report will develop recommendations or strategies for whole of government and community responses to the needs of older Victorians now, and into the future, and incorporate in the recommendations the best international practice in support of ageing well."

Mr Northe said it was important that local seniors have their say on these issues and provide a regional Victorian aspect to the Inquiry.

"There are different needs for seniors

living in regional Victoria in comparison to metropolitan Victoria, and I urge all Latrobe Valley seniors to provide their points of view, concerns, or ideas."

Submissions close Friday 2 September, and can be provided in either hard copy or by email.

Information regarding this Inquiry may be found at www.parliament.vic.gov.au/fcdc and queries directed to the Administrative Office on (03) 8682 2843

Churchill Neighbourhood Centre Inc. Ph: 5122 2955

Term 3: Monday 18 July - Friday 23 September 2011 & Term 4: Monday 10 October - Friday 22 December 2011

Monday 10am - 12 noon	Tuesday 10am - 12 noon	Wednesday 10am - 12 noon	Thursday 10am - 12 noon	Friday 10am - 12 noon
Young Parents support group 11.00 am - 1.00 pm Play Group	Creative Writing Discover your hidden talents by putting pen to paper, and have your writings published.		Patchwork (advanced) Gum Leaf Quilters attend Learn quilting, material choice, technique & design, or if you need help /advice, call in & we will set you on the right quilting path.	Basic Computers For the beginner, learn the basics
ACDSee Photo Editor Learn cropping, red eye reduction, & adjustment.. Restore old photo's	Social Media Internet, Email, SMS also Genealogy & more	Adult Literacy & Numeracy 10.00am to 3.00pm Career Development. Online learning - self management Study using computers or Traditional class room tuition Having trouble spelling, rading, writing or maths, let us help you get up to speed.		Lead Lighting create your own designs, lamp shades, butterflies, dragon flies, window & door inserts
Stitch/Chat/Sew/Knit Finish UFO's, socialise, have a Cuppa/chat. Learn to Sew or Knit	Child Immunisation 1.00 pm - 3.00 pm 4th Tuesday each month 23/8, 27/9, 25/10, 22/11, 13/12			Chit & Chat Do something different, watch a movie, or go out for lunch.. Talk about it, share life's adventures. Make new friends.
Monday 1pm - 3pm	Tuesday 1pm - 3pm	Decorative Painting 12.00 noon to 3.00pm Learn different brush techniques, create beautiful & functional items for your home, or gifts for family & friends	Thursday 1pm - 3pm	
Community Workshop Incorporating Men's Shed Program Wednesday 9.30am - 2.30pm All Welcome	MS Word/Excel/Publisher 12.30 pm -2.30 pm Editing, formatting, templates, layout, tables, columns, toolbars, shortcut keys, & more		Patchwork (advanced) Gum Leaf Quilters attend Learn quilting, material choice, technique & design, or if you need help /advice, call in & we will set you on the right quilting path.	Book Club Churchill Book Worms 4th Friday of the Month Wriggle & Read with us
Computers unplugged open up a whole new world of information. Discover how to make greeting cards, birthday, etc.. Posters, flyers, calendars		QuickBooks Learn to use the tools of QuickBooks for home, or gifts for family & friends.		
YOGA for Men with Carol 5.45 pm to 7.00 pm For more info. 5194 2397	Tai Chi 5.00pm - 6.00pm	Patchwork (novice) learn the art of quilting , design & material selection. Night Class - 6.30 pm -9.00 pm	YOGA with Carol 6.00 pm to 7.15 pm For more info. 5194 2397	'Annie' Quilting Machine Training by appointment only. Learn to use 'Annie' our Quilting, machine to complete your fantastic creations.

Mathison Park Working Bee

Our working bee fell on a warmish sunny day.

Eight willing workers turned out and achieved a great deal between 9:30am and 1.30pm.

A small break in the middle to replenish used energy was well received.

Thanks Faye and Chris for your thoughtfulness in providing hot drinks and goodies during our working bees.

The high winds and wetness had resulted in several trees being blown over, and large branches torn off.

With the help of the chainsaw we were



able to dispose of these fallen trees and branches.

One of the large trees lost a huge part of itself, falling across the creek.

It is so sad to see these old trees suffer.

A rubbish clean up netted lots of cans, bottles and wrappers.

The heavy rain had washed away sections of the eastern pathway, and several hours were spent doing what repair work was possible.

Unfortunately, the deluge on Thursday 21st undid the great work and sadly produced even more damage.

It also brought down the creek into the lake, with masses more water and rubbish.

Several new plants were put in the ground, and we are hoping that the warmer weather around the corner will help them grow well.

The next working bee will be held on Saturday 20th August from 9.30am.

We meet at the Mackey's Road car park to plan our day.

Relay for Life 19 & 20 November 2011

At the recent Cancer Council Victoria 2011 Relay For Life Summit, the Latrobe Valley 2010 Relay For Life event received an award for Community Spirit.

This award acknowledged the sincere and dedicated spirit at the 2010 event, which was two years in the making due to the 2009 bushfires, only to have an event with torrential rains during which all who attended showed community spirit in their continued involvement in the Relay.

Despite the walking ceasing, participants continued to engage in the spirit of relay and camp out as best they could and resumed walking the very next day, while waiting for the closing ceremony.

About 200 people attended the closing ceremony.

The official Cancer Council Victoria citation read: "LA TROBE - After facing a year off due to the bushfires - the committee was faced with scorching hot temperatures on the day of setup, followed by torrential rain and gale force winds during the entire event.

Despite the poor weather the committee pulled together, got everyone inside with make shift tent sites that looked more like cubby houses for a night of movies, singing, foursquare, trivia and poker. All went on and raised over \$100,000."

Cancer Council Victoria predicts that during 2011, approximately 1800 relay teams will participate in these events across Victoria.

There are expected to be 56 relay events involving almost 40,000 participants.

Funds raised are expected to total almost \$6 million.

These statistics emphasize "The Power of Relay" in its quest to Celebrate, Remember and Fight Back. These key words really send a powerful message.

In fact, as one person said, "Relay For Life is the essential infrastructure" which "gives the voice" to send the messages.

2010 Research Award Recipients:

Research Awards result from a team raising \$5,000 or more for that year's event.

The funding then goes to a specific and vital cancer research program.

Teams subsequently receive a letter from the researcher with updates related to the research program.

In 2010 the following five Latrobe Relay For Life teams received Research Awards:

Thorpy Blues, Boolarra Stompers, Moe Mad Hatters, Superheroes and Buzz Busters.

There is a new and improved Relay For Life web page.

Use the following link for registrations and checking in on your team's fundraising progress.
<https://secure.cancercouncilfundraising.org.au/registrant/search.aspx?EID=11352&Lang=en-CA&LocID=11387&searchState=teamSearch>

There is also a new Facebook page to join - simply log into your own Facebook account, click on the link below and send a Friends Request.

<http://www.facebook.com/profile.php?id=100002639588188>

Advertisement

Russell Northe MLA

Member for Morwell

I encourage you to contact me if I can be of assistance on any State Government issue.

russell.northe@parliament.vic.gov.au www.russellnorthe.com.au
 66 George Street, Morwell VIC 3840 PO Box 214, Morwell VIC 3840
 ph 03 5133 9088 fax 03 5133 9388

Authorised by Russell Northe MLA, 66 George Street, Morwell VIC 3840

STRUT RE-GAS

GIPPSLAND
 "The Strut Specialist"
 Tel: 5166 1665 Mob: 0407 542 122

Struts are not throw away items ...
 They can be RE-GASSED

- Sales of Steel and Stainless Struts
- Repairs to all types of Struts
- Design applications and pressure modification
- Handles and Fittings available

PICK-UP IN MOST AREAS

NEW CHURCHILL MOTORS

Specialising in all General Repairs and Servicing of 4WD and Passenger Vehicles Including:-

- *Brake and Clutch replacement and brake machining
- *Steering and suspension
- *Gas and petrol tuning
- *Cylinder head and Flywheel machining
- *Log book servicing and general repairs

Lot 8 Phillip pde CHURCHILL 3842
 Phone: (03) 5122 1380
 Fax: (03) 5122 3586
 STEVEN ABBEY

Churchill NOODLE

FAST TAKE AWAY

OPEN 7 DAYS
 TRADING HOURS
 Mon - Fri: 11.45am - 8.30pm
 Sat - Sun: 4.30pm - 8.30pm

EAT - IN OR TAKE AWAY

- ★ Asian / Chinese / Malaysian Style Noodles
- ★ Spicy / Vegetarian or Combination Rice Dish
- ★ Lunch & Dinner Pack Menu

(All Meals Served with special Fried Rice or Steamed Rice)

- ★ CHINESE CUISINE: Main Course Dishes for you to Share with your Whole Family
- ★ We Provide our Fast Food Service with your Counter Order OR Phone Take Away Order

DON'T COOK AT HOME
 LET US DO THE COOKING.....

FAST TAKEAWAY
RING NOW: (03) 5122 1191

Toy Library

Watson Park - Heesom Crescent, Churchill

Open - Saturday
 10am - 12pm fortnightly

27 August - September 10 - October 22
 Fees - \$10 per term / Conc \$5 per term

Latrobe Valley Field Naturalists Club

Below please find information about the Latrobe Valley Field Naturalists Club meeting and excursion. Thank you for your support.

If you would like to interview the speaker please contact the LVFNC Secretary, Mrs Wendy Savage wsavage@dsci.net.au or telephone 5634 2246 On Friday, August 26th the topic of the Latrobe Valley Field Naturalists' Club meeting will be "China's Black Bears" presented by David Farrar.

David Farrar, a ranger with Parks

Victoria, went to China in 2006 to help with an Earthwatch expedition into the remote mountains to survey Asiatic Black Bears (Moon Bear) and Giant Panda. David also visited the Chengdu Bear Rescue Centre; where bear species were rescued from bear bile farming.

The meeting at 7.30pm is at the Latrobe Community Health Centre meeting room, 44 Fowler St, Moe.

On the following day there will be a microscope workshop looking at pond life.

Thank You

The team at Churchill and District News would like to say a huge "Thank You" to Ian Bennett for his time and donation to make our computer system

work efficiently.

Our troubles are finally over and we are able now to have more efficiency in the production of your local newspaper.

Your help provides hope this Daffodil Day

Every day 29 Victorian lives are lost to cancer but there's one day we can all provide a little hope - Daffodil Day, Friday 26 August.

Cancer Council Victoria spokesperson Deb Stringer said there's a lot to celebrate with Daffodil Day's 25th year in Australia, but there's still more work to be done.

"Since Daffodil Day was first held in Australia 25 years ago, we have seen the Federal Government implement nationwide screening programs for breast and cervical cancer, and the beginnings of a national screening program for bowel cancer," Ms Stringer said.

"But with an ageing population, and the fact that cancer occurs more commonly in older people, the number of people diagnosed with cancer is expected to increase by 40 per cent over the next 10 years."

"The good news is that survival rates are also increasing, meaning more people are living longer after a diagnosis.

At the beginning of the 20th century, a diagnosis of cancer was virtually a death sentence. Today, six out of ten people will not only survive a cancer diagnosis,



but live for longer too.

All funds raised through Daffodil Day support cancer research, prevention programs and support services for cancer patients and their families.

This year Cancer Council Victoria hopes to raise \$2 million to continue their work.

A range of daffodil merchandise will be available throughout August at train stations, street stalls, shopping centres and participating retailers.

This year there will be over 350 Daffodil Day sites located across Victoria.

To support Daffodil Day, visit www.daffodilday.com.au or phone 1300 65 65 85.



LATROBE EYE CARE
PTY LTD

13 George Street Morwell, 3840
Tel: (03) 5134 2555 Fax: (03) 5134 3109

Providing a Complete Service to the Community

- Spectacle Makers
- Sun Glasses
- Contact Lens Practitioners
- Eye Examinations
- Cataract, Diabetes & Glaucoma Co-Management



WE ARE OPEN

Our Office is **OPEN** every
Wednesday from 11 am to 1 pm
at the Co-Operating Churches
Williams Avenue, Churchill
Book advertisements, etc.



Postcards



NEW 2nd Edition CHURCHILL POSTCARDS

2nd Edition of 8 in a series of scenes in and around Churchill. Available in Churchill from the Churchill Hub, Churchill Post Office, Asian Grocery, Churchill Newsagency, Lifeline, Ritchies IGA, Advantage Pharmacy
Photography from entries in CD News Photographic Competition and by CD News Staff.

A great gift idea . . . Send to your friends, family or overseas or just as a keepsake for yourself . . .

Kitchen to Compost trial ends

The Kitchen to Compost trial undertaken in Churchill since February 2011 will end with the final combined food and garden organics collection on Thursday 11 August.

The six month trial has been run using a system of bench top caddies and specially designed compostable bags that allow air flow and minimise odour that were delivered to approximately 1800 households by the Rotary Club of Hazelwood.

Composting of the combined food and garden organics have been trialed under two systems – an effective microbe composting process undertaken by Pinegro Products, Morwell, and through the in-vessel composting facility at Gippsland Water's Soil and Organic Recycling Facility (SORF) at Dutson Downs.

Matthew Peake, the Executive Officer for the Gippsland Regional Waste Management Group, which managed the project, said the mid trial audit results had been very encouraging with a 43% reduction of food waste to landfill.

"The Churchill residents involved in the trial should be very proud of their efforts.

Without their support and participation we would be unable to predict the likely outcomes if this system was to be provided throughout our region," he added.

"Results of further bin audits in August and feedback from residents regarding their thoughts on the trial, will provide a good understanding of our level of success."

The final project report will be provided to

Sustainability Victoria, the primary trial funder, and other trial partners including Latrobe City Council, Cleanaway TPI and EPA Victoria and will include a cost-benefit analysis.

"Once that analysis is done, the results will feed into future decision making by other Regional Waste Management Groups in Victoria and Councils planning to reduce the amount of food and organic waste sent to landfill."

From Thursday, 11 August householders participating in the trial should revert to their pre-trial disposal system, either home composting or using the red lid garbage bin for the disposal of household food waste," Mr Peake said, though he encouraged residents who don't already have a composting system at home to introduce a compost bin or worm farm to continue their efforts in reducing food and garden organics sent to landfill.

Food waste currently accounts for over 47% of waste collected in the average garbage bin in Latrobe City.

The trial's interim results indicate that this system is able to achieve the current Towards Zero Waste diversion targets of 65% set by the State Government for 2014. Residents in Churchill who would like to provide feedback on their experiences can contact Nola Anderson at the Gippsland Regional Waste Management Group on 5633 3337 or email reogipps1@dcsi.net.au.

Churchill & District News

SPORT

Churchill Bowls

The Churchill Bowls Club is eagerly awaiting the decision from Latrobe City Council re the recommendations concerning the Gaskin Park Review, which will confirm the location of the future Churchill Bowls Club Green. It is hoped that a decision will be forthcoming before our A.G.M which will be held on Tuesday 6th September 2011.

Our ladies Indoor Bowls Pennant teams are performing well with good results from all our teams in the competition. The club conducted two indoor bowls tournaments in July, commencing on Thursday 21st and 28th, with a large number of players participating in the 2 days of competition. The Club would like to acknowledge J. Medew, J. Whelan and their team, who have worked tirelessly in ensuring a successful outcome of the Ladies Indoor Pennant competition and tournaments. Thanks also go to our sponsors, International Power Hazelwood and Latrobe City for their financial support and assistance regarding these events.

Our Thursday night Indoor Carpet Bowls is still attracting good numbers, with the emphasis on having a fun and social night out. Games commence at

7.30pm and conclude at approximately 9.30pm after a light supper. Anyone wanting to play can just turn up on the night, coaching is available.

The Churchill Bowls Club will be conducting its A.G.M on Tuesday 6th September 2011 starting at 7pm at the Gaskin Park Hall Churchill; guest speaker will be Russell I Northe M.P. All members are invited to attend.

The Bowls Club will be conducting a Trivia Night on Saturday 10th September 2011 at the Top Pub Morwell, commencing at 7.30pm. The format will be 10 teams consisting of 10 players per team at \$10.00 per player. Good prizes to be won with a hot supper and nibbles provided, drinks at bar prices. So come along and have a good night out pitting your trivia knowledge against the rest. Bookings can be made by contacting M. Stait on 51221252, V. Hargreaves on 51221304 or W. Brown on 51221860

The Club will also be conducting a sausage sizzle at Bunnings on Saturday 8th October 2011, so come along and buy a snag and support your local bowls club.

Till next month, cheers

Craft Bonanza

Saturday 27 & Sunday 28 August 2011

10.00 am to 4.00 pm

Entry: \$ 2.00 (children free)

Churchill Neighbourhood Centre

9 – 11 Philip Parade, Churchill

(inside – Churchill & District Community Hub)

The biggest assembly of art and craft

Displays - Demonstrations - Sales

This side of the Crafty Stump - Something for everyone.

Decorative painting

Quilting

Wool spinning

Embroidery

Scrapbooking

Glass art

Wood-turning

Fabric, cottons, wool sales – all your needs at one convenient Craft Bonanza

Don't miss out on this fabulous opportunity to stock up on crafty gifts for Christmas, Birthdays, Weddings, Christenings, and even Bar mitzvahs

Available: food and drink

Ph: 5122 2955

Email: churchillnc@bigpond.com

or find us on FaceBook

FUNCTION ROOM FOR HIRE

Churchill United Soccer Club

Reasonable Rates

Ideal for:

Birthdays

Engagements

To Book Call Jenny

Ph: 5122 2884

Relationships Australia

VICTORIA



Post Separation Parenting Group

Successful parenting following separation minimises the

known risk factors to children, such as ongoing parental conflict, and provides children with a secure and co-operative parental alliance.

Topics covered include:

- * The impact of separation and change on parents and children
- * Separation through the eyes of the child
- * The harmful effects of conflict on children
- * Building a secure base for your children
- * Belonging and its link to self-esteem
- * Communication and the art of listening
- * Creating a workable co-parenting relationship
- * Discipline and establishing ground rules
- * Problem solving strategies - the invitational approach

Tuesday 18th October for 6 weeks

Time: 5.30pm - 7.30pm

Where: 41 Grey Street, Traralgon

For Further Information and Registrations

Cost: \$90.00
(concession \$75.00)

Phone:
5175 9500
5175 9333



Valley Trophy Centre

60 George Street, Morwell

*Engraving *Personalised Coffee Mugs *Name Badges *Giftware and Pewter *Glass Engraving *Large Trophy Display



5134 1493

FAX 5134 1334

www.valleytrophycentre.com.au

Indigenous Garden in Glendonald Park

The Latrobe City Council, through a consultative process asked the Koori Studies Unit at GippsTAFE for names of artists to work on a design for the Indigenous Garden in Glendonald Park.

Well known Aboriginal artists Ronald Edwards and Helen Treadwell were asked to prepare a design for the garden using shields belonging to the local Gunnai Kurnai Brataualung people.

Ronald is well known for telling stories of the Dreamtime.

Ron and Helen worked one day a week to prepare the design and to

paint the bollards.

Traditional hand prints are used as well as the symbols for women, circles, diamonds and men. The colours used in Gippsland are traditionally brown, black and white. Other colours appear on the bollards which incorporate contemporary colours as well as the traditional in these designs.

Doris Paton worked on the information which has been recorded on the sign boards. This tells of the different plants in the garden and their uses to the Koori people.

Speaking with Doris she conveyed

that she was thrilled that Latrobe City Council had involved the Koori Studies Unit in consulting with the local Koori people. She believes that will help to build respect and relationships, as the talents of the Koori community are recognised and appreciated.

This is just one of a number of projects involving both parties. Some shields are painted on the path outside the Morwell Police Station. They will also be working with Monash GEP on the project to link Monash with the Central shopping area.



Churchill North Primary School After School Care & Playgroup

**After School Care
Qualified Coordinators
Jillian Keenan & Jess Chamings**

Fees & Charges
Each hour block is \$5.00 per child.
Families may claim Child Care Benefit with respect to this program.

Hours of Operation
Monday—Friday during the school term.
Hours of operation are between 3:15—5:15.
Sessions may be booked for an hour at a time.

Playgroup

Your child can have fun playing with others while you meet other parents and share the joys and challenges of parenting.

Playgroup allows children to:

- Learn through play, listen to stories, sing & play musical instruments
- Have fun inside & outside, making friends and developing new skills
- Interact with other adults, learn simple rules & routines

Activities include:
Painting & pasting
Sandpit play
Climbing equipment
Play dough
Home corner
Construction
Music & movement
Stories & much more

Where: Churchill North Primary School
Coolabah Drive, Churchill.
When: Wednesdays (during school terms)
Time: 9.00—11.00 am
Bring: A healthy snack & drink
Cost: Gold coin

